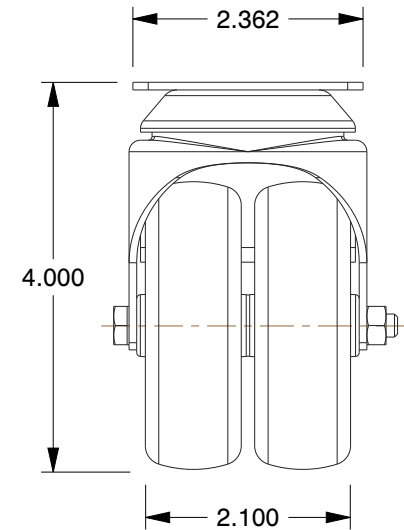
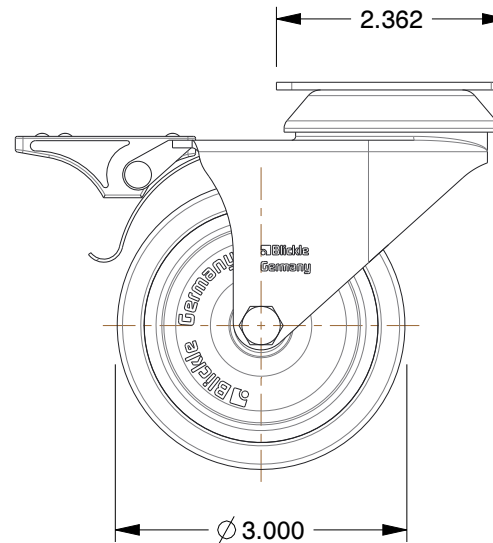
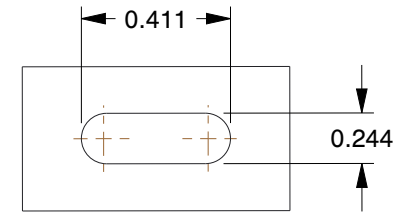


MOUNTING HOLE DETAILS



NOTES:

1. LOAD RATING : 220 lb.
2. WHEEL COLOR : Gray
3. FRAME FINISH : Zinc Plated
4. CASTER WHEEL BEARINGS : Plain
5. CASTER FRAME MATERIAL : Steel
6. CASTER WHEEL SHAPE : Twin Wheel
7. CASTER CORE MATERIAL : Polypropylene
8. CASTER WHEEL MATERIAL : Thermoplastic Rubber
9. CASTER LOAD RATING RANGE : Light-Duty
10. CASTER PRODUCT GROUP : Swivel Caster with Total Lock

COMPONENT	Plate Caster		
490V32	UNIT		
	INCH		
	SHEET		
	1 of 1		

GRAINGER

100 Grainger Parkway, Lake Forest, Illinois 60045-5201
1-(800) GRAINGER, 1-(800) 472-4643, (847) 535-1000
www.grainger.com

This file and any associated information and specifications are provided for reference and evaluation purposes only, and is subject to change without notice. Grainger makes no representations, warranties or guarantees as to the appropriateness, accuracy, completeness, or suitability for any purpose, of the file, information or specifications. You are solely responsible for the use of the file, information or specifications.

This drawing is the property of GRAINGER. It contains confidential, proprietary information that is GRAINGER property. Do not disclose to or duplicate for others except as authorized by GRAINGER.

SCALE 0.51

Plate Caster, 220 lb. Load Rating