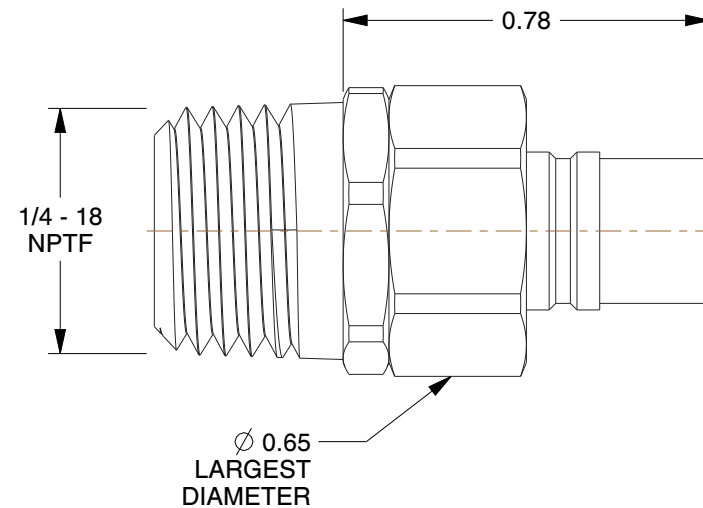
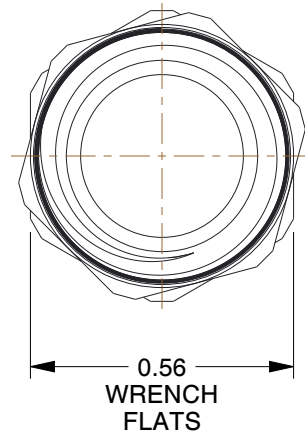


|                          |                     |                       |                     |
|--------------------------|---------------------|-----------------------|---------------------|
| Series                   | PH                  | Shut Off              | No                  |
| Sleeve Material          | 316 Stainless Steel | Valve Design          | Poppet              |
| Connection Type          | MNPT                | Seal Material         | Buna                |
| Coupler Body Size        | 1/4"                | Max. Pressure         | 10,000 psi          |
| Coupler Flow Rate        | 7.2 gpm             | Coupler Finish        | Plain               |
| Coupler Thread Size      | 1/4"-18             | Locking Mechanism     | Ball                |
| Coupler Interchange Type | PH                  | Coupler Body Material | 316 Stainless Steel |



#### NOTES:

1. ITEM: Hydraulic Coupler Nipple
2. OPERATING TEMP. RANGE: -40° to 200°F
3. QUICK COUPLER TYPE: Hydraulic Coupler Nipple

**GRAINGER**  
/ / / /

100 Grainger Parkway, Lake Forest, Illinois 60045-5201  
1-(800) GRAINGER, 1-(800) 472-4643, (847) 535-1000  
www.grainger.com

This file and any associated information and specifications are provided for reference and evaluation purposes only, and is subject to change without notice. Grainger makes no representations, warranties or guarantees as to the appropriateness, accuracy, completeness, or suitability for any purpose, of the file, information or specifications. You are solely responsible for the use of the file, information or specifications.

This drawing is the property of GRAINGER. It contains confidential, proprietary information that is GRAINGER property. Do not disclose to or duplicate for others except as authorized by GRAINGER.

SCALE

2.45

COMPONENT

Hydraulic Quick Couplers

**20LG41**

Nipple, 1/4-18, 1/4 In. Body, 316 SS

UNIT

INCH

SHEET

1 of 1