

REPLACEMENT PARTS LIST FOR SINGLE SEAL MODELS "N270" and "E270".

See back page for illustration.

REF NO.	DESCRIPTION	MODELS:									
		N270-A	N270-B	N270-C	N270-D	N270-E	E270-A	E270-B	E270-C	E270-D	E270-E
QTY	NOTES	6/95 thru 5/97	6/97 thru 3/07	4/07 thru 4/08	5/08 thru 8/09	9/09 thru Current	6/95 thru 5/97	6/97 thru 3/07	4/07 thru 6/08	7/08 thru 12/08	1/09 thru Current
1	HANDLE	267032	267032	267032	267032	267032	267032	267032	267032	267032	267032
2	CASE ASSEMBLY	267051	011549	011549	011549	011549	267051	011549	011549	011549	011549
3	CASE GASKET	267007	267007	267007	267007	267007	267007	267007	267007	267007	267007
4	POWER CORD	010155	010154	018825	010154	010154	011558	003618	019048	003618	003618
5	SEAL ASSEMBLY POWER	010154	010154	010154	010154	010154	010154	010154	010154	010154	010154
6	MOTOR HOUSING ASM/SOURCE	010156	010156	010156	010156	010156	010157	010157	010157	010157	010157
	MOTOR HOUSING ASM/ZT	N/A	N/A	N/A	N/A	150013	N/A	N/A	N/A	N/A	150014
7	ROTOR & BRG ASM/SOURCE	010994	010994	010994	010994	010994	010994	010994	010994	010994	010994
	ROTOR & BRG ASM/ZT	N/A	N/A	N/A	N/A	150015	N/A	N/A	N/A	N/A	150015
8	BEARING RADIAL	009540	009540	009540	009540	009540	009540	009540	009540	009540	009540
9	25 OZ OIL CAN	010330	010330	010330	010330	010330	010330	010330	010330	010330	010330
10	SEAL ASSEMBLY	011681	011681	011681	011681	011681	011681	011681	011681	011681	011681
11	SQUARE RING SEAL	267006	267006	267006	267006	267006	267006	267006	267006	267006	267006
12	BASE	010973	010973	010973	010973	010973	010973	010973	010973	010973	010973
13	HANDLE RETAINERS	267053	267053	267053	267053	267053	267053	267053	267053	267053	267053
14	TERM INSULATOR	001797	N/A	N/A	N/A	N/A	001797	N/A	N/A	N/A	N/A
15	WIRE PACK	010159	011548	011548	011548	011548	010159	011548	011548	011548	011548
16	CAPACITOR ASSEMBLY	010160	011550	011550	011550	011550	010160	011550	011550	011550	011550
17	PUMP HOUSING	009519	009519	009519	009519	009519	009519	009519	009519	009519	009519
18	IMPELLER	011690	011690	011690	011690	011690	011690	011690	011690	011690	011690
19	SCREW 1/2-24X3/8	001883	001883	001883	001883	001883	001883	001883	001883	001883	001883
20	SCREW 1/4-20X3/4	001916	001916	001916	001916	001916	001916	001916	001916	001916	001916
21	SCREW 5-32X7/16	004644	004644	004644	004644	004644	004644	004644	004644	004644	004644
22	WASHER#6	002117	002117	002117	002117	002117	002117	002117	002117	002117	002117
23	GROUND SCREW	001877	001877	001877	001877	001877	001877	001877	001877	001877	001877
24	THRU WALL TERMINAL	003402	003402	003402	003402	003402	003402	003402	003402	003402	003402
25	O-RING	005701	005701	005701	005701	005701	005701	005701	005701	005701	005701
26	SCREW #10-10X1 HHX WASH	005326	005326	005326	005326	005326	005326	005326	005326	005326	005326
27	TEST PLUG	034090	034090	034090	034090	034090	034090	034090	034090	034090	034090
28	SCREWS	012491	012491	012491	012491	012491	012491	012491	012491	012491	012491
□	REBUILD KIT	010173	010173	010173	010173	010173	010173	010173	010173	010173	010173

• Items included in Rebuild Kit.

□ Not shown in illustration.

NOTES:

- 1) See FM0160 parts price sheet for listing of parts pricing.
- 2) "NA" indicates not applicable.
- 3) If an "X" follows model number or date of manufacture on brass I.D. tag, consult factory for ordering of this part.
- 4) When replacing capacitor assembly on "REV. A" pumps only (Item 16), customer must also replace the case assembly (Item 2).
- 5) When ordering motor housing (Item 6) or rotor and bearing (Item 7), specify either source or ZT motor. ZT stator can be identified by a completely round stator.

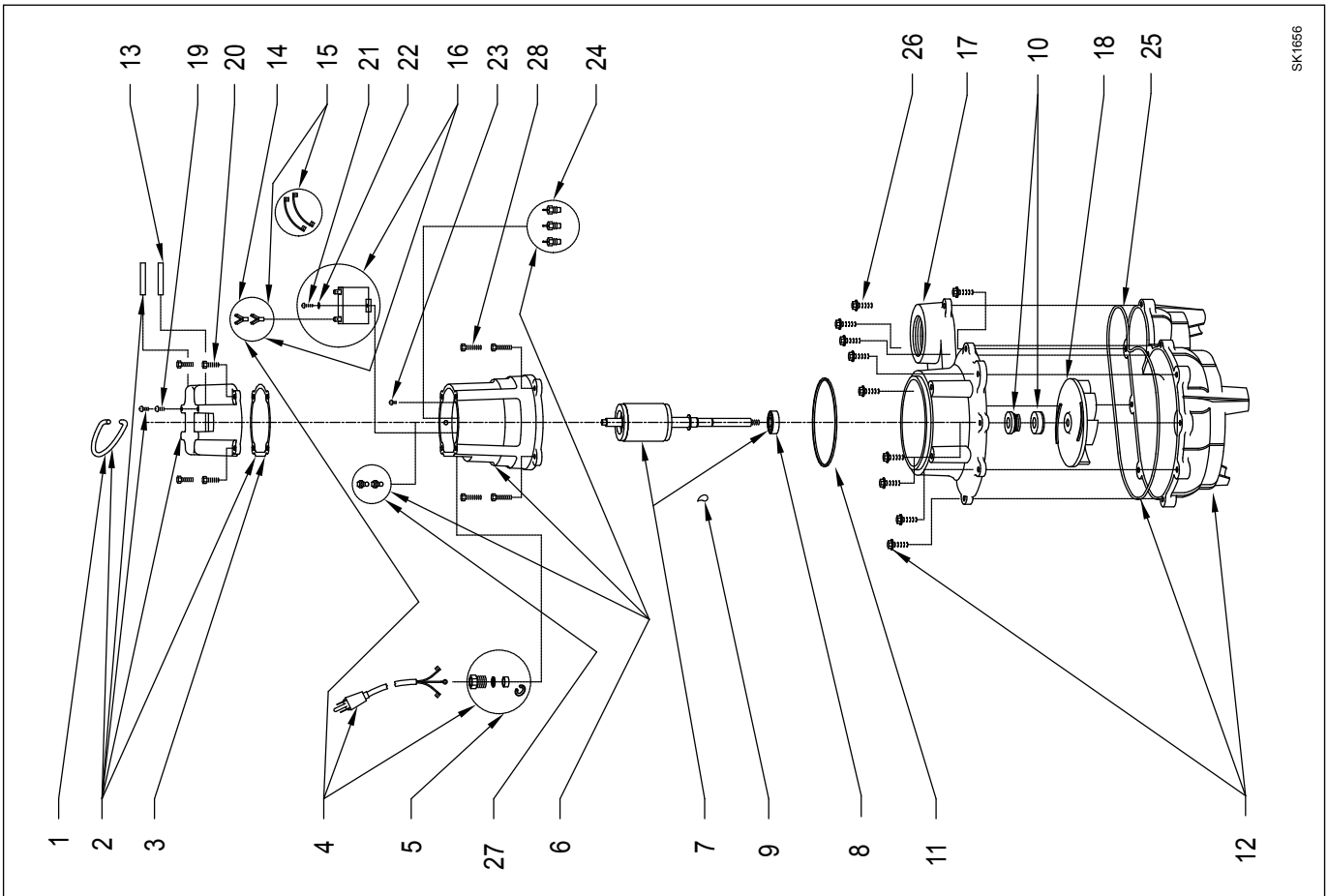
REPLACEMENT PARTS LIST FOR DOUBLE SEAL MODELS "N4270" and "E4270"

See back page for illustration.

REF NO.	DESCRIPTION	MODELS:										E4270-E	
		N4270-A	N4270-B	N4270-C	N4270-D	N4270-E	E4270-A	E4270-B	E4270-C	E4270-D	E4270-E		
QTY	NOTES	6/95 thru 5/97	6/97 thru 3/07	4/07 thru 4/08	5/08 thru 8/09	9/09 thru Current	6/95 thru 5/97	6/97 thru 3/07	4/07 thru 6/08	6/97 thru 3/07	4/07 thru 6/08	7/08 thru 12/08	1/09 thru Current
1	HANDLE	267032	267032	267032	267032	267032	267032	267032	267032	267032	267032	267032	267032
2	CASE ASSEMBLY	267051	011549	011549	011549	011549	267051	011549	011549	011549	011549	011549	011549
3	CASE GASKET	267007	267007	267007	267007	267007	267007	267007	267007	267007	267007	267007	267007
4	POWER CORD	010155	011551	018925	011551	011551	011558	003618	019048	003618	019048	003618	003618
5	SEAL ASSEMBLY POWER	010154	010154	010154	010154	010154	010154	010154	010154	010154	010154	010154	010154
6	MOTOR HOUSING ASM/SOURCE	010156	010156	010156	010156	010156	010157	010157	010157	010157	010157	010157	010157
	MOTOR HOUSING ASM/ZT	N/A	N/A	N/A	N/A	150013	N/A	N/A	N/A	N/A	N/A	N/A	150014
7	ROTOR & BRG ASM/SOURCE	010996	010996	010996	010996	010996	010996	010996	010996	010996	010996	010996	010996
	ROTOR & BRG ASM/ZT	N/A	N/A	N/A	N/A	150016	N/A	N/A	N/A	N/A	N/A	N/A	150016
8	36.5 OZ OIL CAN	010331	010331	010331	010331	010331	010331	010331	010331	010331	010331	010331	010331
9	16 OZ OIL CAN	010158	010158	010158	010158	010158	010158	010158	010158	010158	010158	010158	010158
10	SEAL ASSEMBLY	011681	011681	011681	011681	011681	011681	011681	011681	011681	011681	011681	011681
11	SQUARE RING SEAL	267006	267006	267006	267006	267006	267006	267006	267006	267006	267006	267006	267006
12	BASE	153009	153009	153009	153009	153009	153009	153009	153009	153009	153009	153009	153009
13	HANDLE RETAINERS	267053	267053	267053	267053	267053	267053	267053	267053	267053	267053	267053	267053
14	TERM INSULATOR	001797	N/A	N/A	N/A	N/A	001797	N/A	N/A	N/A	N/A	N/A	N/A
15	WIRE PACK	010159	011548	011548	011548	011548	010159	011548	011548	011548	011548	011548	011548
16	CAPACITOR ASSEMBLY	010160	011550	011550	011550	011550	010160	011550	011550	011550	011550	011550	011550
17	BEARING	009540	009540	009540	009540	009540	009540	009540	009540	009540	009540	009540	009540
18	ADAPTER	011679	011679	011679	011679	011679	011679	011679	011679	011679	011679	011679	011679
19	PUMP HOUSING	010939	010939	010939	010939	010939	010939	010939	010939	010939	010939	010939	010939
20	IMPELLER	010690	011690	011690	011690	011690	011690	011690	011690	011690	011690	011690	011690
21	TEST PLUG	034090	034090	034090	034090	034090	034090	034090	034090	034090	034090	034090	034090
22	SCREW 1/4-20X3/4	001916	001916	001916	001916	001916	001916	001916	001916	001916	001916	001916	001916
23	SCREW 10-24X3/8	001883	001883	001883	001883	001883	001883	001883	001883	001883	001883	001883	001883
24	SCREW 6-32X7/16	004644	004644	004644	004644	004644	004644	004644	004644	004644	004644	004644	004644
25	WASHER #6	002117	002117	002117	002117	002117	002117	002117	002117	002117	002117	002117	002117
26	GROUND SCREW	001877	001877	001877	001877	001877	001877	001877	001877	001877	001877	001877	001877
27	THRU WALL TERMINAL	003402	003402	003402	003402	003402	003402	003402	003402	003402	003402	003402	003402
28	SNAP RING & WASHER	010167	010167	010167	010167	010167	010167	010167	010167	010167	010167	010167	010167
29	SCREW S	012491	012491	012491	012491	012491	012491	012491	012491	012491	012491	012491	012491
□	REBUILD KIT	010166	010166	010166	010166	010166	010166	010166	010166	010166	010166	010166	010166

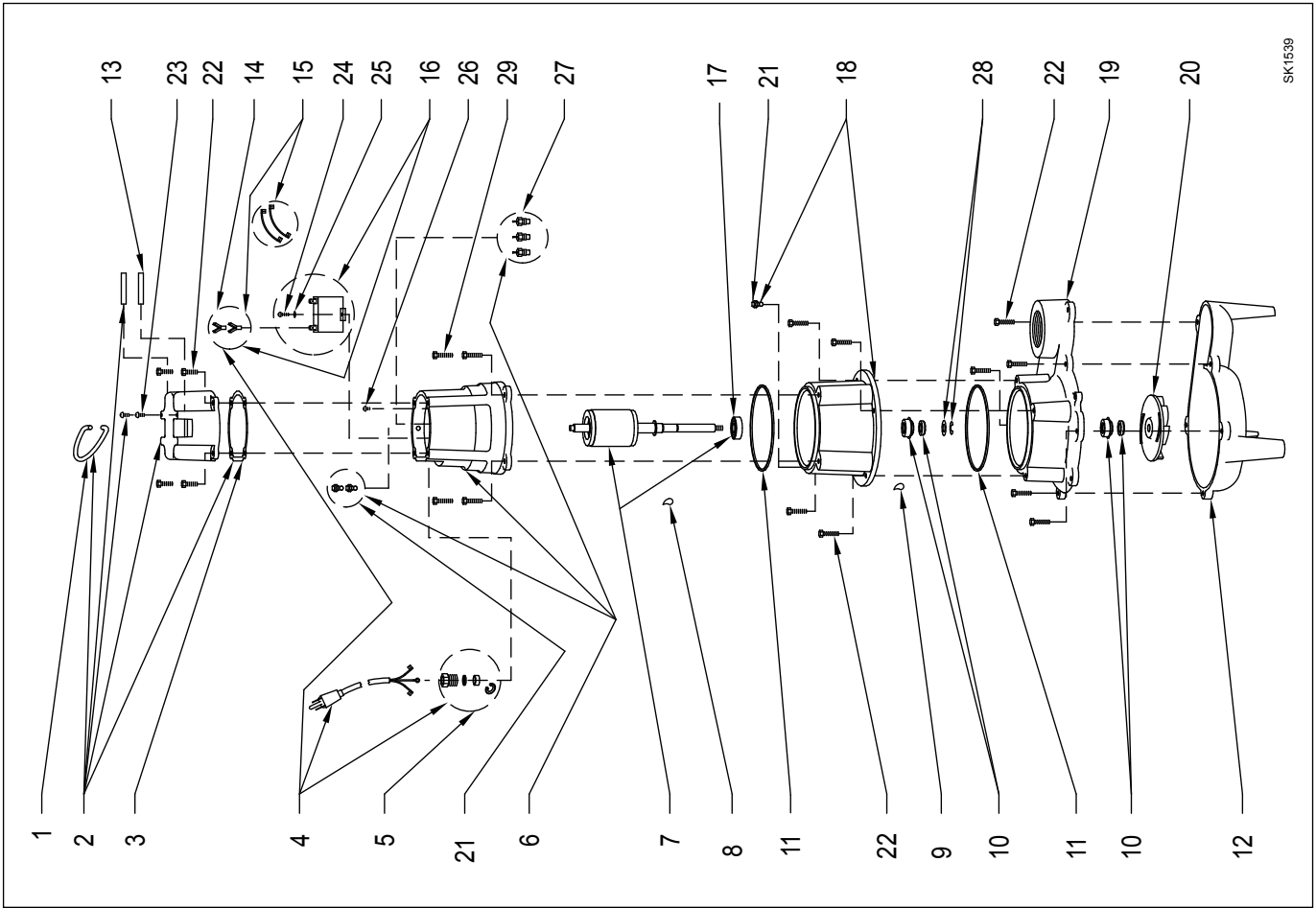
- Items included in Rebuild Kit. □ Not shown in illustration.
- NOTES:**
- 1) See FM0160 parts price sheet for listing of parts pricing.
 - 2) "NA" indicates not applicable.
 - 3) If an "X" follows model number or date of manufacture on brass I.D. tag, consult factory for ordering of this part.
 - 4) When replacing capacitor assembly on "REV. A" pumps only (Item 16), customer must also replace the case assembly (Item 2).
 - 5) When ordering motor housing (Item 6) or rotor and bearing (Item 7), specify either source or ZT motor. ZT stator can be identified by a completely round stator.

REPLACEMENT PARTS ILLUSTRATION FOR MODELS "N270" AND "E270"



SK1656

REPLACEMENT PARTS ILLUSTRATION FOR MODELS "N4270" AND "E4270"



SK1539