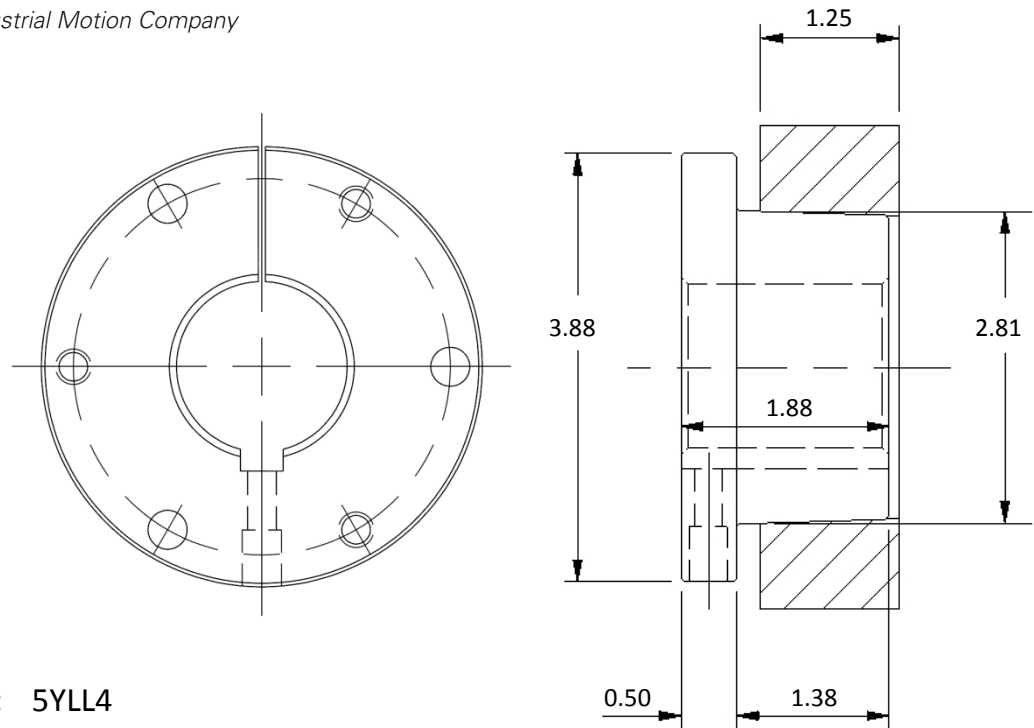


## Product Specification Sheet



**Material Number:** 5YLL4

**Product Number:** SK11516

**Part Description:** SKx1 15/16

**Product Type:** Sure-Grip Bushing

**Bushing Size:** SK

Properties and Performance	
Bore:	1 15/16 in
Keyway:	1/2 x 1/4; Standard
Torque Rating:	7000 in·lbs
Material Type:	Cast Iron
Product Weight:	2.3 lbs
Installation Torque:	15 ft·lbs
Capscrew Size:	3X 5/16-18 x 2; Grade 5
Setscrew Size:	5/16-18
Mounting:	Standard or Reverse

\*Special key is included for all shallow keyways