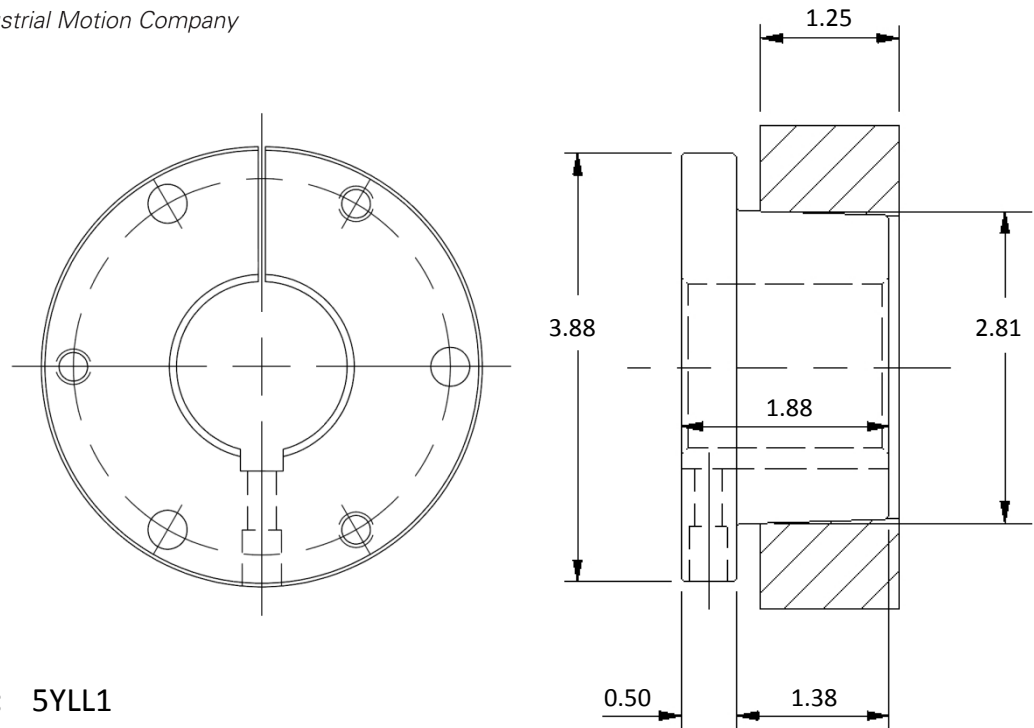


Product Specification Sheet



Material Number: 5YLL1

Product Number: SK111116

Part Description: SKx1 11/16

Product Type: Sure-Grip Bushing

Bushing Size: SK

Properties and Performance	
Bore:	1 11/16 in
Keyway:	3/8 x 3/16; Standard
Torque Rating:	7000 in·lbs
Material Type:	Cast Iron
Product Weight:	2.6 lbs
Installation Torque:	15 ft·lbs
Capscrew Size:	3X 5/16-18 x 2; Grade 5
Setscrew Size:	5/16-18
Mounting:	Standard or Reverse

*Special key is included for all shallow keyways