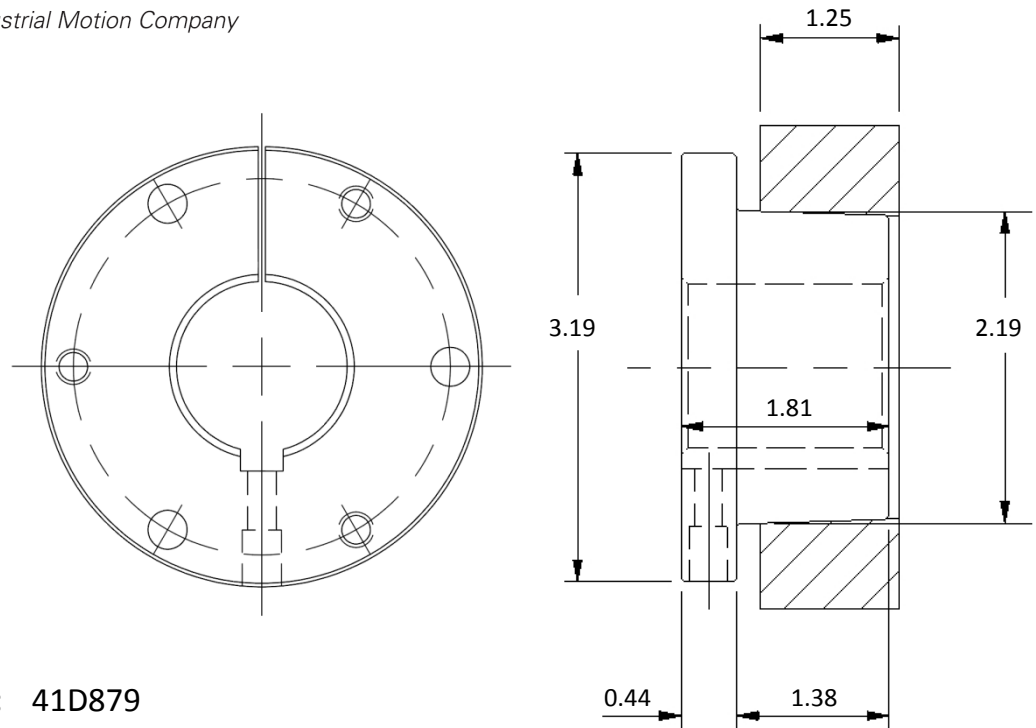


Product Specification Sheet



Material Number: 41D879

Product Number: SD118

Part Description: SDx1 1/8

Product Type: Sure-Grip Bushing

Bushing Size: SD

Properties and Performance	
Bore:	1 1/8 in
Keyway:	1/4 x 1/8; Standard
Torque Rating:	5000 in·lbs
Material Type:	Steel
Product Weight:	1.7 lbs
Installation Torque:	9 ft·lbs
Capscrew Size:	3X 1/4-20 x 1 7/8; Grade 5
Setscrew Size:	1/4-20
Mounting:	Standard or Reverse

*Special key is included for all shallow keyways