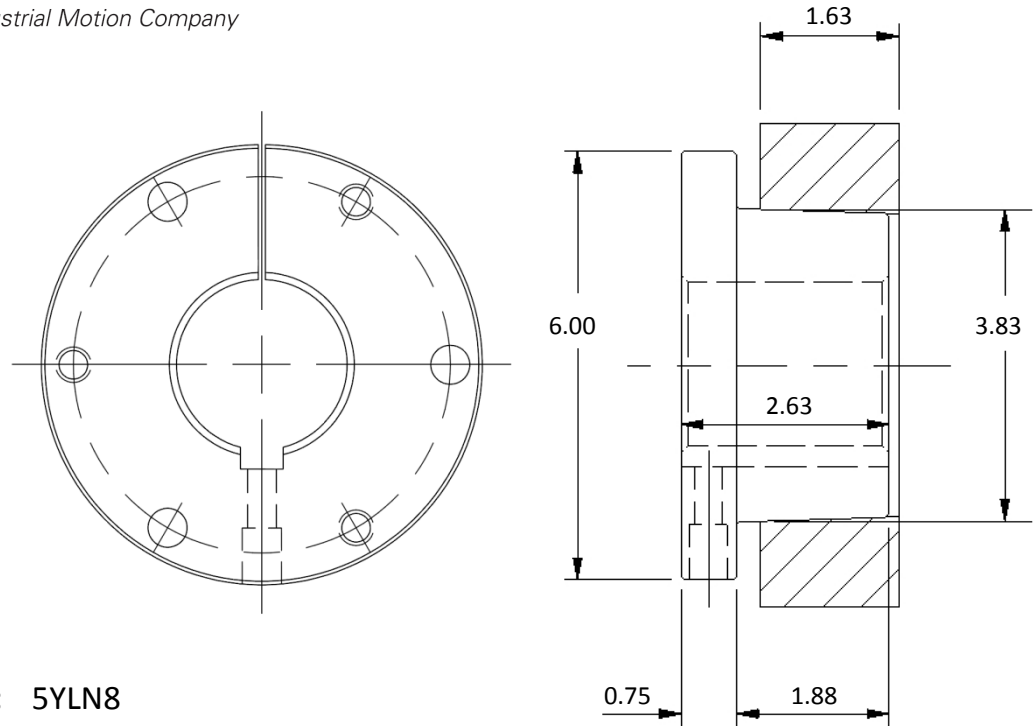


Product Specification Sheet



Material Number: 5YLN8

Product Number: E2

Part Description: Ex2

Product Type: Sure-Grip Bushing

Bushing Size: E

Properties and Performance	
Bore:	2 in
Keyway:	1/2 x 1/4; Standard
Torque Rating:	20000 in·lbs
Material Type:	Cast Iron
Product Weight:	9.0 lbs
Installation Torque:	60 ft·lbs
Capscrew Size:	3X 1/2-13 x 2 3/4; Grade 5
Setscrew Size:	3/8-16
Mounting:	Standard or Reverse

*Special key is included for all shallow keyways