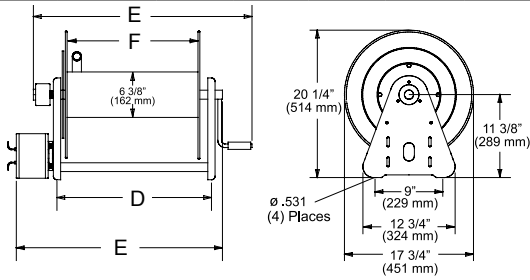


Long Hose Lengths | Series 30000

| Hose I.D. | 1/4" | 3/8" | 1/2" | 3/4" | 1" | |
|-----------|----------|---------------|-----------|-----------|-----------|--------|
| | (6.4 mm) | (9.5 mm) | (12.7 mm) | (19.1 mm) | (25.4 mm) | |
| Hose O.D. | .530" | .710" | .850" | 1.188" | 1.375" | |
| | (13 mm) | (18 mm) | (22 mm) | (30 mm) | (35.0 mm) | |
| "F" Width | Weight | Hose Capacity | | | | |
| 6" | 38 lb | 200' | 140' | 100' | 50' | N/A |
| (152 mm) | (18 kg) | (61 m) | (43 m) | (30 m) | (15 m) | |
| 12" | 46 lb | 425' | 300' | 200' | 100' | 50' |
| (305 mm) | (21 kg) | (130 m) | (91 m) | (61 m) | (30 m) | (15 m) |
| 18" | 54 lb | 625' | 450' | 325' | 175' | 100' |
| (457 mm) | (24 kg) | (191 m) | (137 m) | (99 m) | (54 m) | (31 m) |
| 22" | 58 lb | 780' | 550' | 400' | 225' | 125' |
| (559 mm) | (27 kg) | (238 m) | (168 m) | (122 m) | (69 m) | (38 m) |
| 27" | 66 lb | 1000' | 700' | 500' | 275' | 150' |
| (686 mm) | (30 kg) | (305 m) | (213 m) | (152 m) | (84 m) | (46 m) |



E **A** **3** **2** **1** **06** **L** **12D** **X**

Drive Type
 A - Air motor
 B - Bevel crank
 C - Hand crank
 E - Electric motor
 H - Hydraulic motor

Width of Spool
 See "F" Dimension
 06 - 6" (152 mm)
 12 - 12" (305 mm)
 18 - 18" (457 mm)
 22 - 22" (559 mm)
 28 - 27" (686 mm)

Motor Type
 Blank
 X - Explosion proof electric motor

Fluid Path Type
 A - Gooseneck
 B - No gooseneck (1" only)
 H - Heavy duty gooseneck (1" only)

Swivel Size
 0 - No swivel
 2 - 1/2" (13 mm) I.D.
 3 - 3/4" (19 mm) I.D.
 4 - 1/2" (13 mm) Dual
 5 - 3/4" (19 mm) Dual
 6 - 1/4" (6 mm) Dual
 7 - 1" (25 mm) I.D.
 8 - 1/2" (13 mm) I.D. pressure wash

Power Source
 Blank
 12D - 12 V DC
 24D - 24 V DC
 10A - 115 V AC
 4A - 1 1/2 HP air motor
 6A - 4 HP air motor

Pressure
 L - 1000 PSI (69 bar)
 M - 3000 PSI (207 bar)

NOTE: This chart is for reference purposes only. Please see selection chart or consult manufacturer for additional models not listed or for any questions about option combinations.

| Model without hose | Shipping Weight | | Hose I.D. | Hose O.D. | Capacity | | Pressure | | (F)NPTF Reel Outlet | (F)NPTF Reel Inlet | D | E | F | | | | | |
|---|-----------------|----|-----------|-----------|----------------|-----|----------|------|---------------------|--------------------|-----|--------|--------|--------|--------|------|-----|-----|
| | lbs | kg | | | in | m | psi | bar | in | in | | | | in | mm | mm | mm | |
| Hand Crank Hose Reels Temperature operating range from -20 °F (-29 °C) to +250 °F (121 °C) | | | | | | | | | | | | | | | | | | |
| CA32106 L | 40 | 18 | 1/2 | 13 | .750 | 19 | 100 | 30 | 1000 | 69 | 1/2 | 1/2 | 9 3/4 | 248 | 19 3/4 | 502 | 6 | 152 |
| CA32112 L | 46 | 21 | 1/2 | 13 | .750 | 19 | 200 | 61 | 1000 | 69 | 1/2 | 1/2 | 15 3/4 | 400 | 25 3/4 | 654 | 12 | 305 |
| CA32118 L | 51 | 23 | 1/2 | 13 | .750 | 19 | 325 | 99 | 1000 | 69 | 1/2 | 1/2 | 21 3/4 | 552 | 31 3/4 | 806 | 18 | 457 |
| CA32122 L | 65 | 29 | 1/2 | 13 | .750 | 19 | 400 | 122 | 1000 | 69 | 1/2 | 1/2 | 25 3/4 | 654 | 35 3/4 | 908 | 22 | 559 |
| CA32128 L | 69 | 31 | 1/2 | 13 | .750 | 19 | 500 | 152 | 1000 | 69 | 1/2 | 1/2 | 30 3/4 | 781 | 40 3/4 | 1035 | 27 | 686 |
| CA32106 M | 42 | 19 | 1/2 | 13 | .850 | 22 | 100 | 30 | 3000 | 207 | 1/2 | 1/2 | 9 3/4 | 248 | 19 3/4 | 502 | 6 | 152 |
| CA32112 M | 46 | 21 | 1/2 | 13 | .850 | 22 | 200 | 61 | 3000 | 207 | 1/2 | 1/2 | 15 3/4 | 400 | 25 3/4 | 654 | 12 | 305 |
| CA32118 M | 52 | 24 | 1/2 | 13 | .850 | 22 | 325 | 99 | 3000 | 207 | 1/2 | 1/2 | 21 3/4 | 552 | 31 3/4 | 806 | 18 | 457 |
| CA33106 L | 41 | 19 | 3/4 | 19 | 1.075 | 27 | 50 | 15 | 1000 | 69 | 3/4 | 3/4 | 9 3/4 | 248 | 19 3/4 | 502 | 6 | 152 |
| CA33112 L | 46 | 21 | 3/4 | 19 | 1.075 | 27 | 100 | 30 | 1000 | 69 | 3/4 | 3/4 | 15 3/4 | 400 | 25 3/4 | 654 | 12 | 305 |
| CA33118 L | 51 | 23 | 3/4 | 19 | 1.075 | 27 | 175 | 53 | 1000 | 69 | 3/4 | 3/4 | 21 3/4 | 552 | 31 3/4 | 806 | 18 | 457 |
| CA33112 M | 47 | 21 | 3/4 | 19 | 1.188 | 30 | 100 | 30 | 3000 | 207 | 3/4 | 3/4 | 15 3/4 | 400 | 25 3/4 | 654 | 12 | 305 |
| CA33118 M | 51 | 23 | 3/4 | 19 | 1.188 | 30 | 175 | 53 | 3000 | 207 | 3/4 | 3/4 | 21 3/4 | 552 | 31 3/4 | 806 | 18 | 457 |
| CH37118 L* | 64 | 29 | 1 | 25 | 1.375 | 35 | 100 | 30 | 1000 | 69 | 1 | 1 | 21 3/4 | 552 | 31 3/4 | 806 | 18 | 457 |
| CH37122 L* | 73 | 33 | 1 | 25 | 1.375 | 35 | 125 | 38 | 1000 | 69 | 1 | 1 | 25 3/4 | 654 | 35 3/4 | 908 | 22 | 559 |
| CH37128 L* | 77 | 35 | 1 | 25 | 1.375 | 35 | 150 | 46 | 1000 | 69 | 1 | 1 | 30 3/4 | 781 | 40 3/4 | 1035 | 27 | 686 |
| Bevel Crank Hose Reels Temperature operating range from -20 °F (-29 °C) to +250 °F (121 °C) | | | | | | | | | | | | | | | | | | |
| BA36112 L | 57 | 26 | 1/4 | 6 | Twin Welding | 250 | 76 | 200 | 14 | 1/4 | 1/4 | 15 3/4 | 400 | 25 3/4 | 654 | 12 | 305 | |
| BA34112 M | 54 | 24 | 1/2 | 13 | Twin Hydraulic | 100 | 30 | 3000 | 207 | 1/2 | 1/2 | 15 3/4 | 400 | 25 3/4 | 654 | 12 | 305 | |
| Electric Motor Driven Hose Reels Temperature operating range from -20 °F (-29 °C) to +250 °F (121 °C) | | | | | | | | | | | | | | | | | | |
| EA32106 L10A | 61 | 28 | 1/2 | 13 | .750 | 19 | 100 | 30 | 1000 | 69 | 1/2 | 1/2 | 9 3/4 | 248 | 19 5/8 | 498 | 6 | 152 |
| EA32112 L12D | 64 | 29 | 1/2 | 13 | .750 | 19 | 200 | 61 | 1000 | 69 | 1/2 | 1/2 | 15 3/4 | 400 | 23 7/8 | 606 | 12 | 305 |
| EA32118 L12D | 68 | 31 | 1/2 | 13 | .750 | 19 | 325 | 99 | 1000 | 69 | 1/2 | 1/2 | 21 3/4 | 552 | 29 5/8 | 752 | 18 | 457 |
| EA33112 L12D | 68 | 31 | 3/4 | 19 | 1.075 | 27 | 100 | 30 | 1000 | 69 | 3/4 | 3/4 | 15 3/4 | 400 | 23 7/8 | 606 | 12 | 305 |
| EA33118 L12D | 68 | 31 | 3/4 | 19 | 1.075 | 27 | 175 | 53 | 1000 | 69 | 3/4 | 3/4 | 21 3/4 | 552 | 29 5/8 | 752 | 18 | 457 |
| EA33112 M12D | 71 | 32 | 3/4 | 19 | 1.188 | 30 | 100 | 30 | 3000 | 207 | 3/4 | 3/4 | 15 3/4 | 400 | 23 7/8 | 606 | 12 | 305 |
| EA33128 M12D | 91 | 41 | 3/4 | 19 | 1.188 | 30 | 275 | 84 | 3000 | 207 | 3/4 | 3/4 | 30 3/4 | 781 | 38 5/8 | 981 | 27 | 686 |
| EA33112 M24D | 71 | 32 | 3/4 | 19 | 1.188 | 30 | 100 | 30 | 3000 | 207 | 3/4 | 3/4 | 15 3/4 | 400 | 23 7/8 | 606 | 12 | 305 |
| EH37118 L12D* | 82 | 37 | 1 | 25 | 1.375 | 35 | 100 | 30 | 300 | 21 | 1 | 1 | 21 3/4 | 552 | 31 | 787 | 18 | 457 |
| Air Motor Driven Hose Reels Filter, regulator, lubricator required. Temperature operating range from -20 °F (-29 °C) to +250 °F (121 °C) | | | | | | | | | | | | | | | | | | |
| AA32112 L4A | 62 | 28 | 1/2 | 13 | .750 | 19 | 200 | 61 | 1000 | 69 | 1/2 | 1/2 | 15 3/4 | 400 | 23 1/4 | 591 | 12 | 305 |
| AA33106 L4A | 59 | 27 | 3/4 | 19 | 1.075 | 27 | 50 | 15 | 1000 | 69 | 3/4 | 3/4 | 9 3/4 | 248 | 17 1/4 | 438 | 6 | 152 |
| AA33112 L6A | 68 | 31 | 3/4 | 19 | 1.075 | 27 | 100 | 30 | 1000 | 69 | 3/4 | 3/4 | 15 3/4 | 400 | 23 1/4 | 591 | 12 | 305 |

All Series 30000 reels are supplied without hose. Assemblies quoted upon request. **CAUTION:** To prevent drum damage, fully extend and pressurize hose and rewind on the reel. For all metric thread connections over 1/2" add the suffix number 70 to indicate BSPT threads - example CA33112 M70. *All 1" reel models have an 8" (203 mm) diameter drum.

Many more reel models available in addition to chart. Please contact manufacturer for details.

Note: Weights listed are for crank driven. Add for power driven, electric - all explosion proof 45 lb. (20.41 kg); 12 V DC 1/3 HP 30 lb. (13.61 kg); Air 6 AM 36 lb. (16.33 kg). Capacity chart is reference only.