

# niroflex 2000®

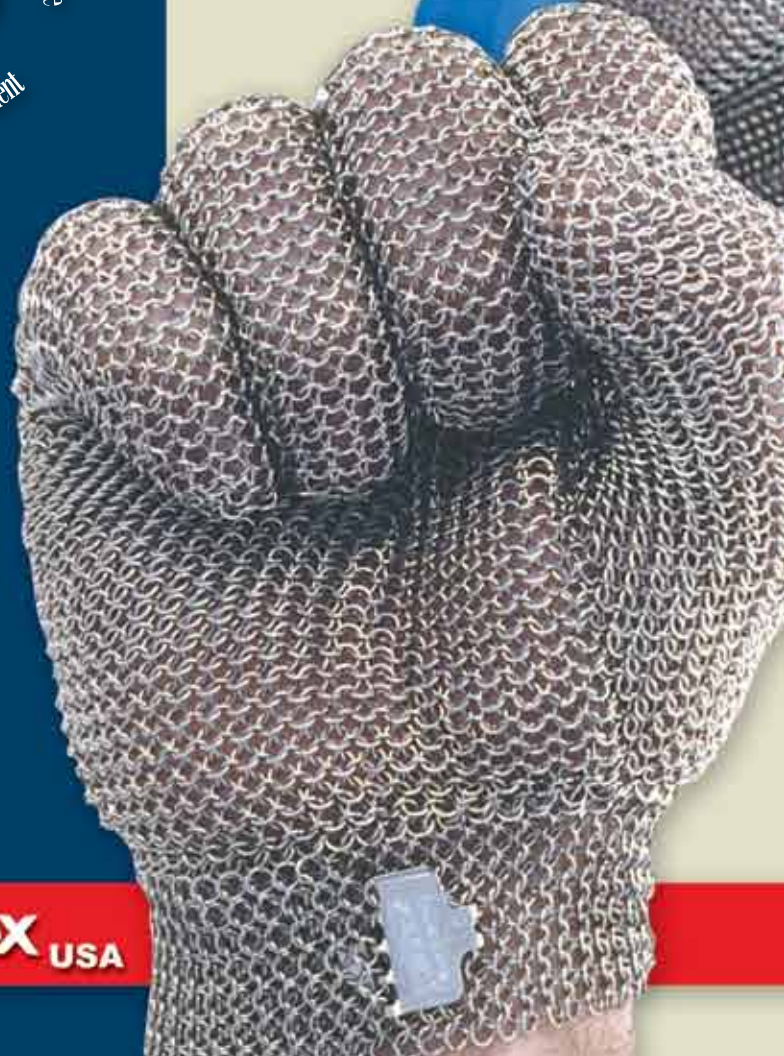
[www.niroflex.com](http://www.niroflex.com)

## Metal Mesh Gloves & Apparel

### ULTIMATE HYGIENE ON THE CUTTING EDGE



**THE ONLY  
USDA ACCEPTED  
METAL MESH GLOVES  
AND GARMENTS**



**niroflex** USA



# niroflex 2000®

## GLOVES

**GU-2500**  
Wrist Length



**GU-2504**  
3" Extended Cuff



**GU-2509**  
6" Extended Cuff



**GU-2515**  
9" Extended Cuff



**GU-2532**  
Shoulder Length



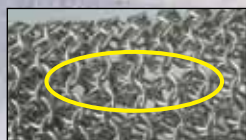
All glove styles are reversible to fit either the left or right hand!

All gloves are also available in ultra lightweight titanium wire. Simply change GU in the style number to GT. For example, GT-2504 is a titanium glove with a 3" extended cuff.

Today, you need the dual protection of Niroflex2000® metal mesh gloves. Niroflex2000 is the first and only ultra-hygienic mesh glove designed to protect the hands of your workers and safeguard your food from contamination. More than 12,000 tiny reinforced links and the patented Niroflex clip closure system guarantee a secure, comfortable custom fit for every worker. Niroflex2000's natural hand shape and food-safe TPU (Thermoplastic Polyurethane) stiffener (on extended cuff styles) make it the most comfortable mesh glove available.

## WHY CHOOSE NIROFLEX?

niroflex 2000



"OTHER" MESH GLOVES



Most other mesh gloves are assembled with joining rings simply attaching adjacent parts. As a result, the gaps at glove seams can be more than 6 mm, easily big enough for a knife point. Niroflex2000 gloves are assembled by weaving the joining ring around (over and under) at least four adjacent rings, in exactly the same way as the basic mesh material is interlocked. As a result, the seams on Niroflex2000 gloves are as strong, safe and secure as any other part of the glove and the maximum gap is only 3 mm.



Niroflex2000 gloves have no place for bacteria to hide, no fabric straps, no buckles, no studs, no rubber bands, and no springs so they clean quickly and easily without contamination risk.



### Niroflex2000 saves you money.

Up to 2/3 of all mesh gloves sent in for repairs need fabric straps replaced. Switch to Niroflex2000 and eliminate necessary repairs. Plus you can reduce your mesh glove stocking requirements by sending fewer gloves for repairs.



Niroflex2000 helps companies keep track of their mesh gloves, a valuable asset. Metal detectable, color-coded (by size) numerical bar code tags are standard on all Niroflex2000 gloves. Record the number when you issue the glove to an employee and make certain that it is returned on time. Niroflex2000 tags can also help with HACCP compliance, as the tags can be used to track cleaning schedules of mesh gloves.

### Only Niroflex2000 has the Niroflex TPU stiffeners, which:

- Stand up to cleaning chemicals and steam cleaning.
- Have excellent bacteria resistance.
- Have excellent resistance against oils, fat, blood, diluted leaches and acids.
- Stay flexible in very cold and very hot temperatures (up to 110° Celsius/ 230° Fahrenheit).
- Are recyclable.



### Niroflex2000 is the only mesh glove to:

1. Meet UL's product safety requirements.
2. Meet the strict requirements of Europe's (CE) EN1082-1 mesh glove requirements.
3. Be produced from mesh made in an ISO certified facility.

**Niroflex2000 – Unsurpassed quality.**



# APPAREL & APRONS



**12SS – Short Vest**



**85B – Bolero Vest**



**2234A – Apron**



**2540ASL – Split Leg Apron**

- 12SS Short Vest, 12" front & back with double mesh sleeves
- 28S Single Sleeve, full arm with adjustable TPU straps
- 28SS Double Sleeve, full arm with adjustable TPU straps
- 48FR Frock, snap-front, 48" length, full sleeves
- 48FRNS Frock, snap-front, 48" length, no sleeves
- 85B Bolero Vest, 33" front length, 12" back, short shoulder sleeve, with adjustable TPU straps
- 92P Safety Pants
- 100S Safety Shirt, 40" front & back, full-length sleeves
- 120M Tunic, 48" length, front & back, long sleeves, adjustable TPU straps

- 2222A 22" width by 22" length
- 2230A 22" width by 30" length
- 2234A 22" width by 34" length
- 2240A 22" width by 40" length
- 2534A 25" width by 34" length
- 2540A 25" width by 40" length

Split leg design, with leg straps, available in 25" x 34" and 25" x 40" aprons.

**All Niroflex garments come with liquid impervious and food-safe TPU (Thermoplastic Polyurethane) straps.**

**Apparel available in sizes S-XL, with custom solutions available upon request.**

All Niroflex mesh apparel is available in either stainless steel or titanium, and 4.2 mm rings or 7.0mm rings.  
 Add S4 to the style number for stainless steel, 4.2 mm ring.  
 Add S7 to the style number for stainless steel, 7.0 mm ring.  
 Add T4 to the style number for titanium, 4.2 mm ring,  
 Add T7 to the style number for titanium, 7.0 mm ring.  
 For example, T4-2222A is a 4.2 titanium apron 22"x22". S7-92P/L is a 7.0 ring steel mesh pants, size large.

## WHAT PEOPLE ARE SAYING ABOUT niroflex 2000®

*In my 10 years in the meat-packing business I have never seen a metal mesh glove last as long as Niroflex2000. We have been using Niroflex2000 mesh gloves for three years, and have had to send only one glove out to be repaired - and that glove was accidentally run over with a forklift! Niroflex2000 mesh gloves really are the best quality mesh gloves that we have ever used.*

– D.B., Safety Director  
Major Great Plains Pork Processor



*When I started at the plant we had mainly fabric strapped gloves and plastic armguards. They were very cumbersome and the fabric straps were hard to clean. Niroflex2000 gloves have no fabric straps so they are easier to keep clean. Also, the Niroflex gloves with 6" extended cuffs are easier and safer to wear, allowing us to eliminate the plastic armguards. The latest Niroflex design with the color-coded plastic [TPU] stiffener is so comfortable, much more so than the gloves that we tested with the metal stiffeners. We track all of our gloves using the Niroflex bar code tags, and we have some senior people that take good care of their gloves and are still using gloves issued to them in 2002!*

– H.Y., Supervisor of Training and Development  
Major Midwestern Turkey Processor



P.O. Box 90 • Deerfield, IL 60015 USA ~ Ph. +1 [847] 400-2638 • Fx. +1 [847] 919-3809  
[www.niroflex.com](http://www.niroflex.com) • [metalmesh@niroflex.com](mailto:metalmesh@niroflex.com)