

FIXED LOUVERS

HVAC/R fact sheet

FIXED INTAKE/EXHAUST LOUVERS

Modular louvers provide good protection from rain and weather at an economical price. The channel frame is 4" deep with K-style non-drainable 45 degree blades. Available in Aluminum or Galvaneal and comes standard with a birdscreen on the back.

Single Panel Sizes – 12"W x 12"H to 48"W x 72"H

OUTSIDE H (IN.)	OUTSIDE W (IN.)	MIN. WALL OPENING (IN.)	GALVANEAL STEEL ITEM NO.	ALUMINUM ITEM NO.
17 1/2	17 1/2	18H x 18W	4FZG3	4FZF3
23 1/2	23 1/2	24H x 24W	4FZG4	4FZF4
23 1/2	35 1/2	24H x 36W	4FZG7	4FZF7
29 1/2	29 1/2	30H x 30W	4FZG6	4FZF6
35 1/2	23 1/2	36H x 24W	4FZG5	4FZF5

OUTSIDE H (IN.)	OUTSIDE W (IN.)	MIN. WALL OPENING (IN.)	GALVANEAL STEEL ITEM NO.	ALUMINUM ITEM NO.
35 1/2	35 1/2	36H X 36W	4FZG8	4FZF8
35 1/2	47 1/2	36H X 48W	4FZH1	4FZG1
47 1/2	35 1/2	48H X 36W	4FZG9	4FZF9
47 1/2	47 1/2	48H X 48W	4FZH2	4FZG2



4FZG4

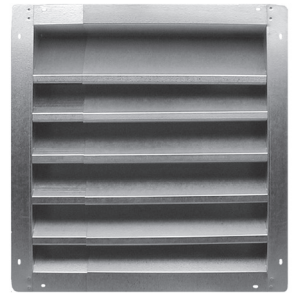
FIXED-HEIGHT ADJUSTABLE-WIDTH INTAKE/EXHAUST LOUVERS

Adjustable-Width Louvers are a unique design that provides good protection from rain and weather but also gives you the flexibility to adjust the louver width during installation. The height remains fixed while the width can be adjusted to your opening size. The frame is 4" deep with 2" flanges and utilizes J-style non-drainable 45 degree blades. Available in Aluminum or Galvanized Steel and comes standard with a birdscreen.

Single Panel Sizes - 12"W x 14"H to 48"W x 48"H

OUTSIDE H (IN.)	OUTSIDE W (IN.)	MIN. WALL OPENING (IN.)	GALVANIZED STEEL ITEM NO.	ALUMINUM ITEM NO.
18	16 TO 22	14H X 12W	4F421	4F951
18	28 TO 46	14H X 24W	2FTV2	2FTV4
22	22 TO 28	18H X 18W	3C972	4F952
22	28 TO 46	18H X 24W	2FTV5	2FTV9
28	22 TO 34	24H X 18W	3C973	4F953
28	40 TO 52	24H X 36W	2FTY1	2FTX2

OUTSIDE H (IN.)	OUTSIDE W (IN.)	MIN. WALL OPENING (IN.)	GALVANIZED STEEL ITEM NO.	ALUMINUM ITEM NO.
34	25 TO 40	30H X 21W	4F422	4F954
40	28 TO 40	36H X 24W	3C974	4F955
40	40 TO 52	36H X 36W	3C975	4F956
46	28 TO 46	42H X 24W	4F423	4F957
52	28 TO 40	48H X 24W	3C976	4F958
52	40 TO 52	48H X 36W	3C977	4F959



4F422

DRAINABLE BLADE FIXED INTAKE/EXHAUST LOUVERS

Drainable Blade Louvers offer excellent resistance to rain and weather. The drainable blade design channels water away from the blades and down the jams. This eliminates water cascading from blade to blade. The channel frame is 4" deep with drainable 45 degree blades. This model is only available in extruded aluminum and comes standard with a birdscreen on the back. A 1-1/2" Flanged Frame Kit is available as an optional accessory.

Single Panel Sizes - 12"W x 12"H to 60"W x 96"H

OUTSIDE H (IN.)	OUTSIDE W (IN.)	MIN. WALL OPENING (IN.)	ALUMINUM ITEM NO.
11 1/2	11 1/2	12H X 12W	45C669
17 1/2	17 1/2	18H X 18W	5NKJ2
23 1/2	23 1/2	24H X 24W	5NKJ3
23 1/2	35 1/2	24H X 36W	5NKJ6
29 1/2	29 1/2	30H X 30W	5NKJ5
35 1/2	23 1/2	36H X 24W	5NKJ4
35 1/2	35 1/2	36H X 36W	5NKJ7

OUTSIDE H (IN.)	OUTSIDE W (IN.)	MIN. WALL OPENING (IN.)	ALUMINUM ITEM NO.
35 1/2	47 1/2	36H X 48W	5NKJ9
41 1/2	41 1/2	42H X 42W	45C678
47 1/2	35 1/2	48H X 36W	5NKJ8
47 1/2	47 1/2	48H X 48W	5NKK0
53 1/2	53 1/2	54H X 54W	45C670
59 1/2	59 1/2	60H X 60W	45C671



5NKJ3

COMBINATION LOUVER DAMPERS

Combination Fixed and Adjustable Blade Louvers offer superior resistance to rain and weather while also offering you the ability to completely close the opening off if needed. The channel frame is 4" deep with drainable 45 degree fixed blades in the front with adjustable blades with seals for tight shutoff in the back all within one frame. The adjustable rear blades are operated with a thumb screw. This model is only available in extruded aluminum and comes standard with a birscreen on the back. A 1-1/2" Flanged Frame Kit is available as an optional accessory.

Single Panel Sizes - 12"W x 12"H to 60"W x 96"H.

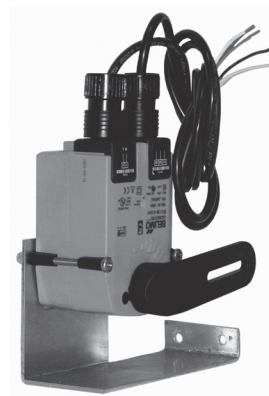
OUTSIDE H (IN.)	OUTSIDE W (IN.)	MIN. WALL OPENING (IN.)	ALUMINUM ITEM NO.	OUTSIDE H (IN.)	OUTSIDE W (IN.)	MIN. WALL OPENING (IN.)	ALUMINUM ITEM NO.
11 1/2	11 1/2	12H X 12W	45C672	35 1/2	47 1/2	36H X 48W	45C682
17 1/2	17 1/2	18H X 18W	5NKH6	41 1/2	41 1/2	42H X 42W	5NKJ0
23 1/2	23 1/2	24H X 24W	5NKH7	47 1/2	35 1/2	48H X 36W	45C681
23 1/2	35 1/2	24H X 36W	45C680	47 1/2	47 1/2	48H X 48W	5NKJ1
29 1/2	29 1/2	30H X 30W	5NKH8	53 1/2	53 1/2	54H X 54W	45C673
35 1/2	23 1/2	36H X 24W	45C679	59 1/2	59 1/2	60H X 60W	45C674
35 1/2	35 1/2	36H X 36W	5NKH9				



5NKH7 (rear view)

OPTIONAL MOTOR KIT FOR COMBINATION LOUVERS

This is an optional 100-240 VAC 50/60 Hz power open spring return motor kit with an end switch. The adjustable rear blades will return to the closed position in the event of loss of power. The motor kit comes pre-assembled for easy installation.



5NKPO

OPTIONAL 1-1/2" FLANGE KIT FOR DRAINABLE BLADE FIXED INTAKE/ EXHAUST LOUVERS AND COMBINATION LOUVER DAMPERS

FOR MIN. WALL OPENING	FLANGE KIT ITEM NO.	FOR USE WITH	
		DRAINABLE LOUVER	COMBINATION LOUVER DAMPERS
12H X 12W	45C675	45C669	45C672
18H X 18W	33W754	5NKJ2	5NKH6
24H X 24W	33W755	5NKJ3	5NKH7
24H X 36W	33W758	5NKJ6	45C680
30H X 30W	33W757	5NKJ5	5NKH8
36H X 24W	33W756	5NKJ4	45C679
36H X 36W	33W759	5NKJ7	5NKH9
36H X 48W	33W762	5NKJ9	45C682
42H X 42W	33W761	45C678	5NKJ0
48H X 36W	33W760	5NKJ8	45C681
48H X 48W	33W763	5NKK0	5NKJ1
54H X 54W	45C676	45C670	45C673
60H X 60W	45C677	45C671	45C674



5NKJ3 (with optional flange)

Find it at Grainger.

Call or visit your local branch or go to grainger.com/dayton for complete product line information.

Dayton®