

Dayton Submersible Effluent Pumps



PUMPS technical data sheet

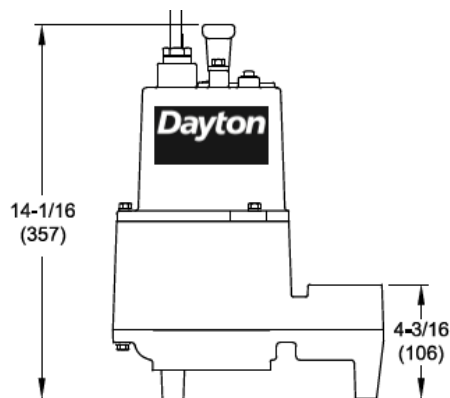
Submersible Effluent Pumps are designed for wastewater transfer or removal. These pumps remove pretreated liquid waste discharge from an onsite sewage treatment system such as a septic tank. Effluent pumps typically operate intermittently and automatically with a float switch and can accommodate solids up to 3/4" in diameter.



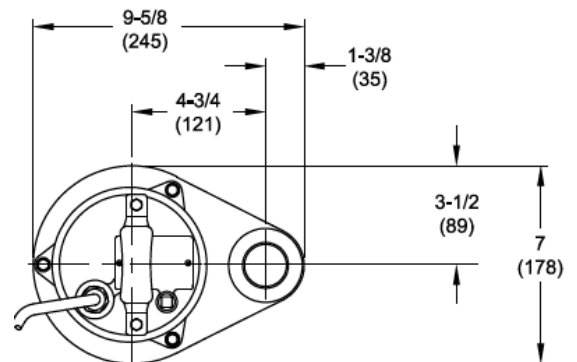
4HU70
1/2 HP, Cast Iron
Submersible Effluent Pump

HP	1/2
Voltage	120V
Phase	Single
Frequency	60 Hz
Run Amps	6.4A
Start Amps	19.6A
RPM	3450
Motor Type	PSC Oil-filled with Class B insulation

Overload Protection	Internal Thermal Overload
Motor Shaft Material	Stainless Steel
Motor Housing Material	Cast Iron
Motor Duty	Continuous
Motor End Bearing	Single Row Ball
Pump End Bearing	Single Row Ball
Lubrication	Oil Lubricated
Discharge	2 Inch FNPT, Vertical
Volute Material	Cast Iron
Base Material	Cast Iron
Impeller Type	Open Vortex
Impeller Material	Cast Iron
Hardware Material	Stainless Steel
O-rings	Buna-N
Seal Type	Single Mechanical
Seal Materials	Silicon Carbide/Silicon Carbide/Buna N
Operation	Manual Operation
Power Cord	14/3 SJTOW, 20' (6.1m), NEMA 5-15P 120V Plug
Max. Solids Handling	3/4" (1.9cm) spherical
Max. Water Temperature	77°F (25°C)
Designed Fluid Environment	Water / Wastewater / Effluent



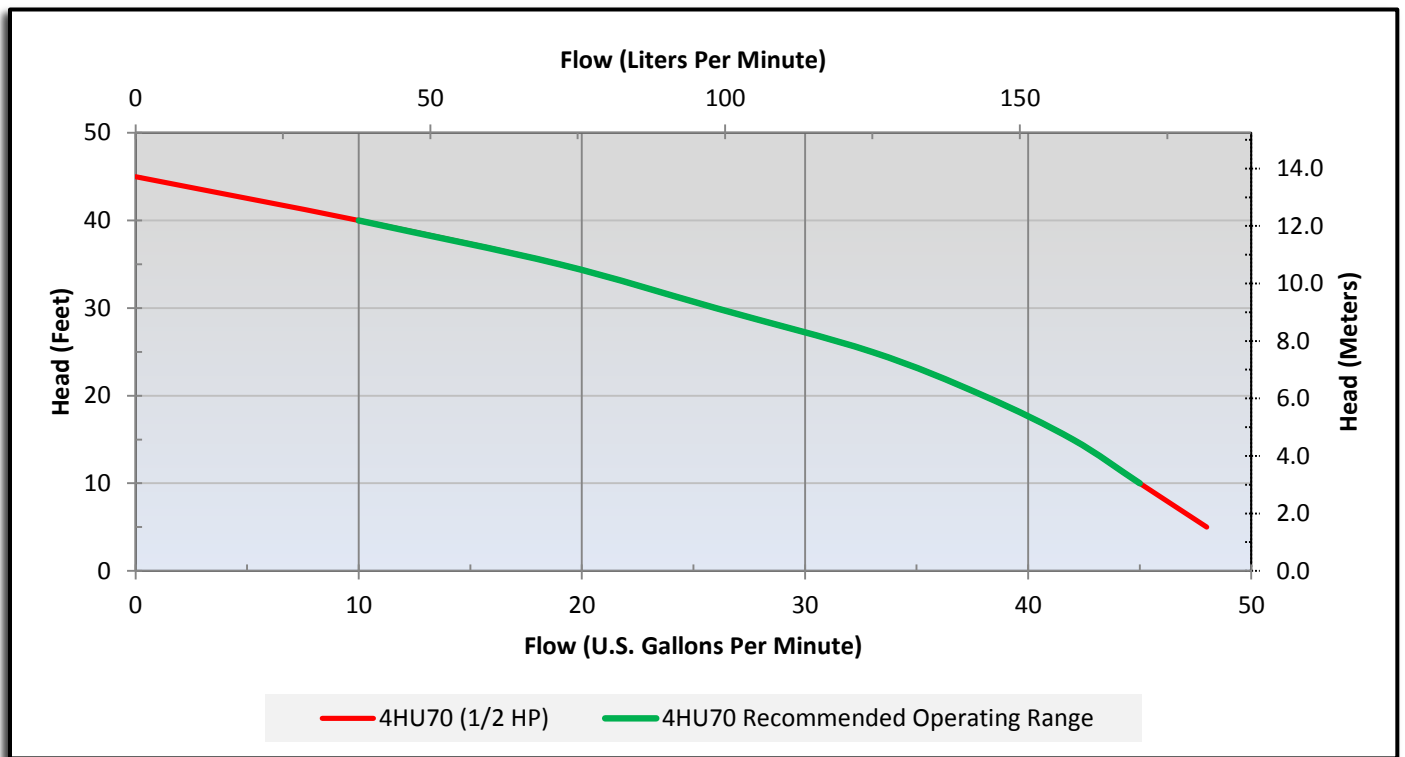
Outline Dimensions



Performance Data

Head	Feet	5	10	15	20	25	30	35	40	45
	Meters	1.5	3.1	4.6	6.1	7.6	9.1	10.7	12.2	13.7
Flow Rate	GPM	48	45	42	38	33	26	19	10	0
	LPM	182	170	159	144	125	98	72	38	0

Performance Chart



WARNING: Use only with nonflammable liquids compatible with pump component materials and in nonflammable/non-explosive atmospheres.

Call or visit your local branch or go to grainger.com/dayton for complete product line information

Find it at Grainger.

© 2013 W.W. Grainger, Inc.

