

Calbrite™

Stainless Steel Conduit Systems



Pharmaceutical



Corrosion-resistant
Durable
Easy to install
Easy to clean



A division of
CALPIPE INDUSTRIES™
Incorporated

Think Stainless Think Calbrite

Over 2,800 Products Manufactured in the USA



Why Calbrite?

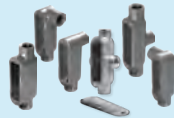
- ✓ Three USA manufacturing and distribution centers
- ✓ Type 304 and 316
- ✓ ARRA compliant products
- ✓ Reliable service
- ✓ Shortest lead times
- ✓ Competitive prices
- ✓ Custom or unique products
- ✓ Quality assurance program complies with UL[®], cUL[®], ANSI and NEMA standards

STAINLESS STEEL CONDUIT



Stainless Steel Rigid Conduit 1/2" - 6"
 Stainless Steel EMT Conduit 1/2" - 2"
 Stainless Steel IMC 1/2" - 2"
 Stainless Steel Flex Conduit 1/2" - 2"
 Bare & Coated
 Flex Coils 25'

STAINLESS STEEL CONDUIT BODIES



Body Style Form 8:
 C, LB, LL, LR, TB, T, X

Size Range: 1/2" - 4"

STAINLESS STEEL HUBS & COUPLINGS



Hub (Line Terminator) 1/2" - 4"
 Grounding Hub 1/2" - 4"
 Conduit Coupling 1/2" - 6"
 3 Piece Coupling 1/2" - 4"

STAINLESS STEEL NIPPLES & ELBOWS



Nipples - Standard & Special Lengths
 Elbows - Standard & Special Radius
 Size Range:
 SS Rigid 1/2" - 6"
 SS EMT 1/2" - 2"

STAINLESS STEEL DEVICE BOXES



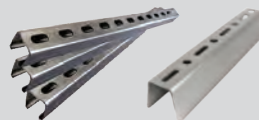
Box Style:
 FD, FDC Single, FDC Double, FDT, FS
 FST & FSX Single, FSCC Single, FDX,
 FDCC

STAINLESS STEEL IN-USE COVERS



Stainless Steel In-Use weather-proof covers

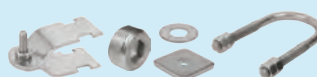
CHANNEL & STRUT CLAMPS



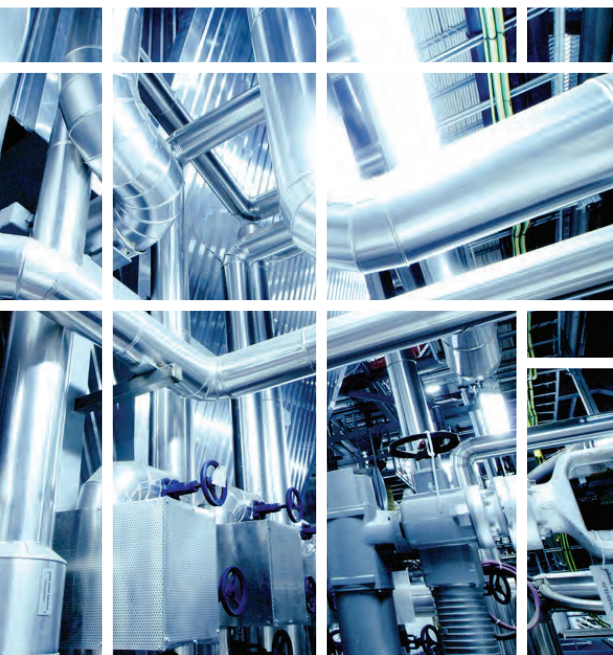
Slotted Strut 7/8", 1-5/8", 3-1/4"
 Length 10'

Food grade channel now available

FITTINGS & ACCESSORIES



Clamps, Brackets, Washers, Nuts, U-Bolts, Locknuts,
 Cover & Gasket Kits, Straps, Screws, Threaded &
 Grounding Rods, Rod Couplings, Conduit Caps, Box
 Connectors, Bushings, Pulling Elbows, Wedge &
 Drop-In Anchors, Clamp Backs & Spacers,
 Compression & Set Screw Connectors, Plugs, Ex.
 Proof Fittings, Cord Grips, Flex Connectors, Fender
 Washers, Escutcheon Plates, Floor Flanges





Critical for the Pharmaceutical Industry

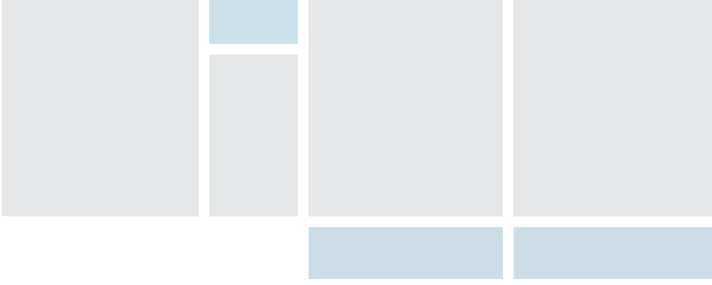
Easy to clean. Corrosion resistant.

✓ The smooth, polished surface of Calbrite's stainless conduit and fittings not only promotes cleanliness, but also greatly reduces the risk of corrosion, minimizes microbial contamination and prevents the adherence of particulates to equipment and products.

✓ Extremely easy to clean, corrosion and damage resistant, and easy to sanitize.

✓ Stainless steel is a safer, more hygienic choice as it provides resistance to pitting and stress corrosion cracking, and is easily sterilized to prevent bacteria growth.

✓ Stainless steel has the ability to stand up to the acidic content of wash-down chemicals commonly used in these environments. Cleaning agents and chemical disinfectants can quickly corrode other materials, promoting bacterial growth and enabling food contamination.



With increasing visibility to product safety and contamination issues, attention has focused on the sanitary practices of pharmaceutical plants. The potential costs of recalls, liability, fines and long term damage to brands has manifested into intensified washdown practices including greater frequency with higher wash pressures, chemical concentrations and temperatures. The perfect reason to choose Calbrite Stainless Steel Conduit Systems.



For over 15 years,
the top pharmaceutical
companies all over
the world have turned
to Calbrite for
their stainless steel
conduit systems.

**114% more SKU's than
our competition**

**175% more UL Listed
products than our
competition**

**250% more Made in the
USA products than our
competition**

**95% of all orders are
shipped in 1-2 business days!**



Calbrite™

Stainless Steel Conduit Systems

A division of
CALPIPE INDUSTRIES
Incorporated

MIDWEST (Sales Office)
2207 165th St.
Hammond, IN 46320
(219) 844-6800
(800) 536-2248
(219) 844-6884 fax
calbrite.com

SOUTHEAST
301 Mears Blvd., Ste. A
Oldsmar, FL 34677
(219) 844-6800
(800) 536-2248
(219) 844-6884 fax

CORPORATE
HEADQUARTERS
19440 S. Dominguez Hills Dr.
Rancho Dominguez, CA 90220
(800) Calpipe
(562) 803-4388
calpipe.com

2015 CBPH-Rev A