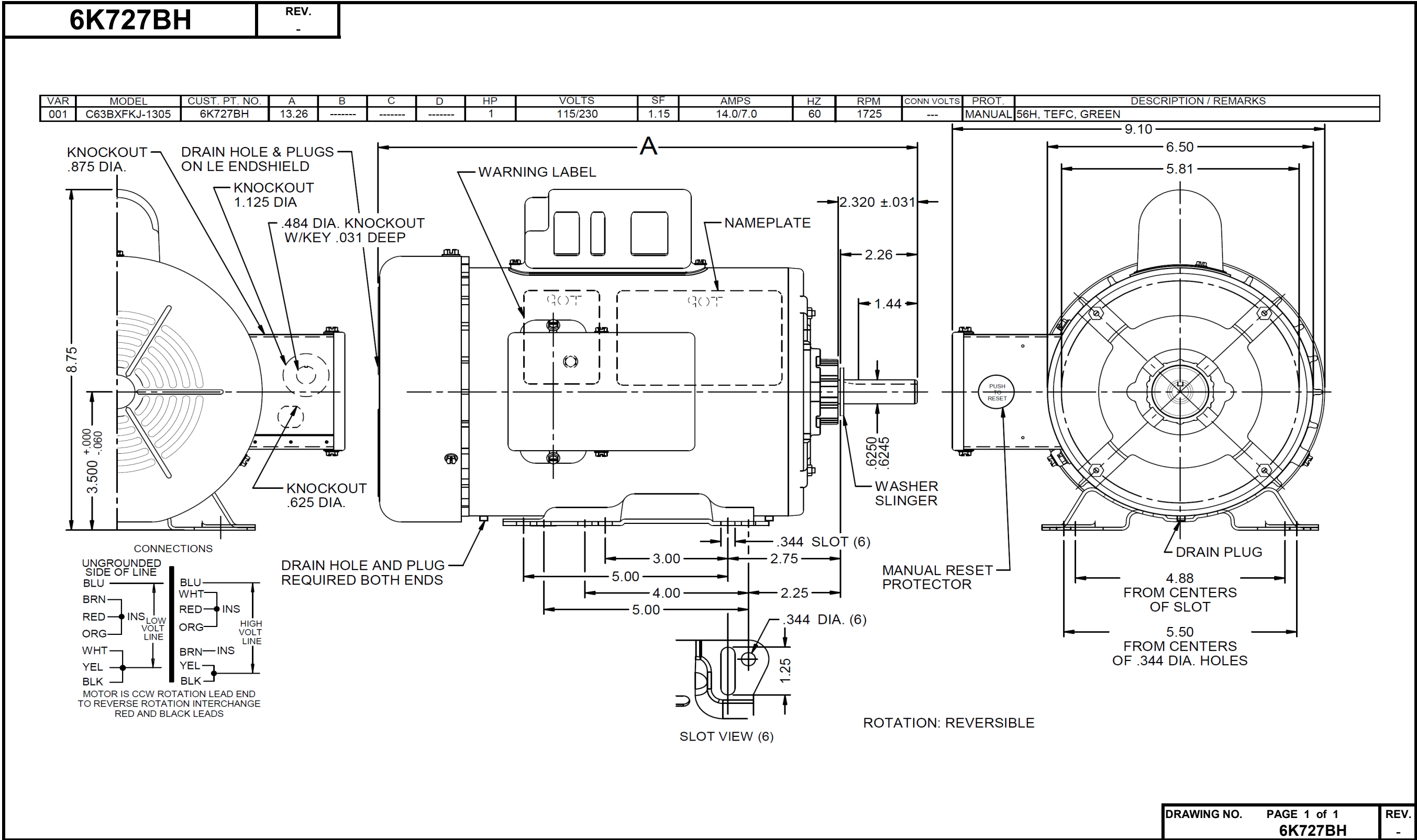


Dimensional Drawing



DRAWING NO.	PAGE 1 of 1	REV.
	6K727BH	-

Dayton Electric Mfg. Co. Lake Forest, IL 60045 USA

©2019 W.W. Grainger, Inc. This design may not be reproduced, modified or redistributed without written permission from W.W. Grainger, Inc.

Performance Data



6K727BH

REV.
-

MOTOR PERFORMANCE

HP:	1HP							
Poles:	4P							
No. of Speeds:	1							
Volts:	115/230	120	230					
HZ:	60	60	60					
Service Factor:								
Efficiency:	@ Rated Load	68.6	69.1					
Power Factor:	@ Rated Load	69.9	69.5					
Amps:	@ No Load							
	@ Rated Load	13.6	6.79					
	@ Service Factor	14.73	7.4					
	@ Locked Rotor	72.46	37.87					
RPM:	@ Rated Load	1742	1743					
Ambient (°C):								
Altitude (FASL):								
Torques:	Breakdown	124.65	127.59					
	Locked Rotor	170.9	175.1					
	Pull-Up	161.4	156.6					
	Rated Load	48.22	48.22					
	Service Factor	56	56					
Watts:	Rated Load	1091	1082					
KVA Code:								
Temperature Rise:	@ Rated Load	77.5	76.5					
	@ Service Factor	92.1	90.9					
Thermal Protector:	Trip Temp (°C)							
Winding Material:	Start (Auxiliary)	Cu						
	Run (Main)	Cu						
Capacitor(s):	Start (MFD / Volts)	367MFD /165V						
	No. of Start Capacitors							
	Run (MFD / Volts)	N/A						
	No. of Run Capacitors							
HP:								
Poles:								
Volts:								
HZ:								
Efficiency:	@ Rated Load							
Power Factor:	@ Rated Load							
Amps:	@ No Load							
	@ Rated Load							
	@ Service Factor							
	@ Locked Rotor							
Torques:	@ Rated Load							
	Locked Rotor							
	Pull-Up							
	Rated Load							
	Service Factor							
Watts:	@ Rated Load							
Temperature Rise:	@ Rated Load							
	@ Service Factor							

DRAWING NO. PAGE 1 REV.
6K727BH -

Dayton Electric Mfg. Co. Lake Forest, IL 60045

Performance Data



6K727BH	REV. -
----------------	-----------

Dayton Manufacturing Company

Motor Description

Model: C063FKJ130501 / 6K727BH
 Motor ID: 1 of 1
 Poles: 4
 Volts: 115/230
 Frequency: 60
 HP: 1
 Speed: 1725
 Phase: 1
 Protector: CED3721

Test Conditions

Test Type: Start
 Test Number: 1
 Poles: 4
 Volts: 115
 Hz: 60
 Rotation:
 Special Cond:
 Speed Conn:
 TestBoard: Amps Performance Fixture #1
 Run Cap: 0
 Start Cap: 594 μfd
 Environment:
 Tested: 12/9/2009 10:35:18 AM
 Tested By: Sharp, Gerald
 Gear Ratio: 1:1
 Bearing Friction: -0.96 Oz-Ft
 Windage Torque: -3.68 Oz-Ft

Special Points	Vline (V)	Iline (A)	Watts	RPM	Tq (Oz-ft)	HP	Eff (%)	PF (%)
	115.0	72.46	7645	11	170.9	0.022	0.2	91.7
PUT OZ-FT	115.0	72.49	7651	11	161.4	0.022	0.2	91.8
	115.0	72.40	7632	42	163.4	0.081	0.8	91.7
	115.0	72.33	7653	186	167.3	0.371	3.6	92.0
	115.0	71.93	7646	319	168.6	0.640	6.2	92.4
	115.0	71.34	7604	442	167.9	0.884	8.7	92.7
	115.0	70.49	7527	557	173.2	1.149	11.4	92.9
	115.0	70.51	7521	663	176.7	1.396	13.8	92.7
	115.0	71.03	7645	762	189.1	1.715	16.7	93.6
	115.0	70.93	7675	857	202.3	2.064	20.1	94.1
	115.0	70.45	7710	942	215.3	2.414	23.4	95.2
	115.0	70.02	7709	1022	227.6	2.771	26.8	95.7
	115.0	69.37	7707	1096	237.5	3.097	30.0	96.6
	115.0	68.77	7688	1163	245.3	3.396	33.0	97.2
	115.0	68.12	7653	1225	251.4	3.666	35.7	97.7
	115.0	67.37	7640	1283	255.0	3.894	38.0	98.6
	115.0	66.64	7580	1335	257.0	4.083	40.2	98.9
	115.0	65.83	7518	1382	256.2	4.215	41.8	99.3
	115.0	64.96	7435	1426	251.7	4.273	42.9	99.5
	115.0	64.13	7364	1466	246.3	4.298	43.5	99.8
	115.0	63.22	7264	1503	237.2	4.245	43.6	99.9
	115.0	62.35	7161	1536	226.4	4.138	43.1	99.9
	115.0	61.46	7050	1566	213.0	3.970	42.0	99.8
	115.0	60.47	6945	1593	198.0	3.755	40.3	99.9
	115.0	59.52	6818	1619	180.9	3.487	38.1	99.6
	115.0	58.48	6676	1642	160.0	3.129	35.0	99.3
	115.0	57.40	6531	1665	140.2	2.778	31.7	99.0
	115.0	56.29	6386	1684	116.1	2.327	27.2	98.7
	115.0	55.10	6216	1705	92.0	1.867	22.4	98.1
	115.0	53.70	6038	1723	66.1	1.356	16.8	97.8
	115.0	52.15	5820	1741	37.4	0.775	9.9	97.0
	115.0	50.49	5594	1759	5.8	0.122	1.6	96.4
	115.0	50.12	5550	1763	0.0	0.000	0.0	96.3

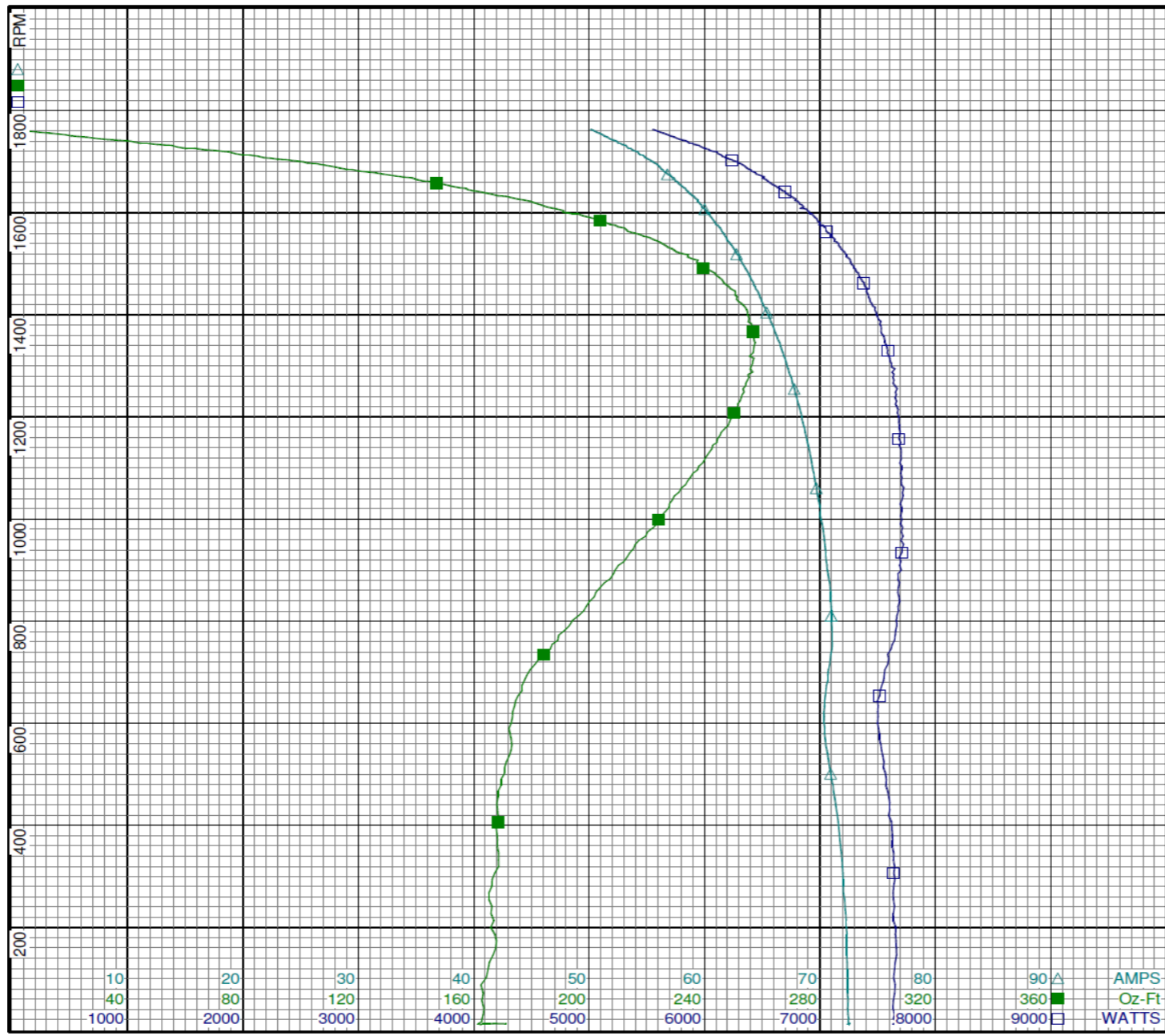
DRAWING NO.	PAGE 1 of 8	REV.
	6K727BH	-

Dayton Electric Mfg. Co. Lake Forest, IL 60045 USA

Performance Data



6K727BH REV. -



Dayton

Curve Descriptions:
Motor(1) Test 1 Start 115V 60 Hz 4P

- SPEED vs WATTS
- SPEED vs TORQUE
- △ SPEED vs ILine

Motor Ratings:
C063FKJ130501 6K727BH

DRAWING NO.	PAGE 2 of 8	REV.
	6K727BH	-

Dayton Electric Mfg. Co. Lake Forest, IL 60045 USA

Performance Data



6K727BH	REV. -
----------------	-----------

Dayton Manufacturing Company

Motor Description

Model: C063FKJ130501 / 6K727BH
Motor ID: 1 of 1
Poles: 4
Volts: 115/230
Frequency: 60
HP: 1
Speed: 1725
Phase: 1
Protector: CED3721

Test Conditions

Test Type: Run
Test Number: 2
Poles: 4
Volts: 115
Hz: 60
Rotation:
Special Cond:
Speed Conn:
TestBoard: Amtps Performance Fixture #1
Run Cap: 0
Start Cap: 594 μfd
Environment:
Tested: 12/9/2009 10:33:53 AM
Tested By: Sharp, Gerald
Gear Ratio: 1:1
Bearing Friction: -0.96 Oz-Ft
Windage Torque: -4.00 Oz-Ft

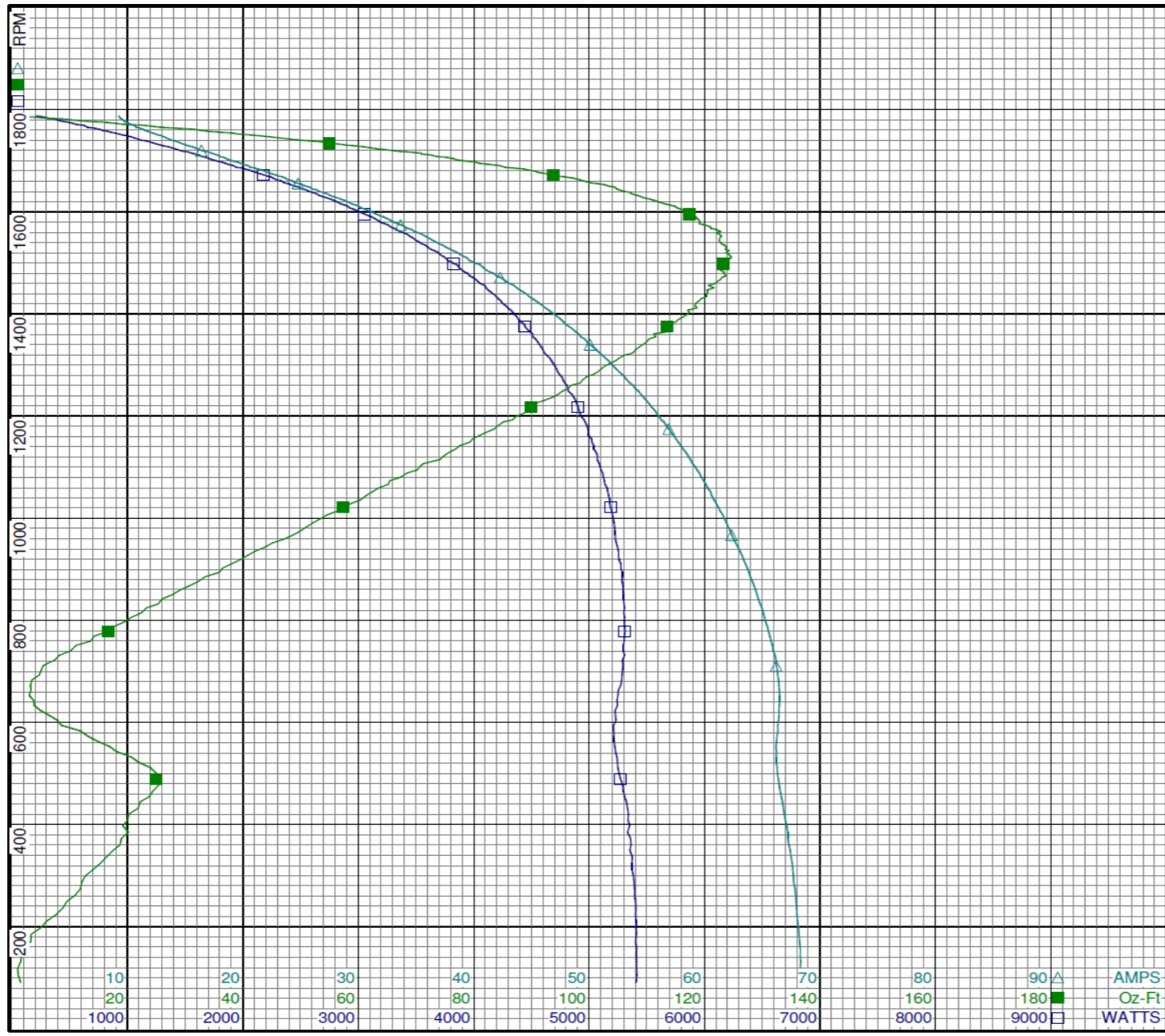
Special Points	Vline (V)	Iline (A)	Watts	RPM	Tq (Oz-ft)	HP	Eff (%)	PF (%)
	115.0	9.23	208	1788	0.00	0.000	0.0	19.6
	115.0	10.40	586	1770	21.24	0.448	56.9	49.0
	115.0	12.42	923	1752	39.11	0.816	65.9	64.6
48.7 OZ-FT	115.0	13.65	1098	1741	48.70	1.010	68.6	69.9
1 HP	115.0	13.60	1091	1742	48.22	1.000	68.4	69.8
56 OZ-FT	115.0	14.73	1241	1733	56.00	1.155	69.4	73.3
	115.0	14.82	1252	1732	56.53	1.166	69.5	73.5
61.6 OZ-FT	115.0	15.74	1370	1726	61.60	1.265	68.9	75.7
1725 RPM	115.0	15.81	1379	1725	61.95	1.272	68.8	75.8
	115.0	17.52	1591	1713	70.88	1.445	67.8	78.9
	115.0	20.38	1913	1691	84.32	1.697	66.2	81.6
	115.0	23.39	2238	1668	95.54	1.897	63.3	83.2
	115.0	26.35	2542	1643	105.08	2.055	60.3	83.9
	115.0	29.39	2847	1615	113.09	2.175	57.0	84.2
	115.0	32.49	3143	1586	118.71	2.242	53.2	84.1
	115.0	35.48	3422	1556	122.54	2.269	49.5	83.9
	115.0	38.52	3688	1520	123.73	2.239	45.3	83.3
BDT OZ-FT	115.0	39.39	3753	1510	124.65	2.240	44.5	82.9
	115.0	41.42	3922	1482	123.40	2.176	41.4	82.3
	115.0	44.26	4147	1443	120.60	2.071	37.3	81.5
	115.0	46.99	4354	1398	116.99	1.948	33.4	80.6
	115.0	49.59	4536	1351	110.37	1.774	29.2	79.5
	115.0	52.09	4702	1298	102.76	1.588	25.2	78.5
	115.0	54.48	4850	1242	94.59	1.399	21.5	77.4
	115.0	56.68	4980	1181	84.20	1.184	17.7	76.4
	115.0	58.77	5070	1114	74.14	0.983	14.5	75.0
	115.0	60.62	5169	1044	61.32	0.762	11.0	74.1
	115.0	62.36	5226	967	48.68	0.560	8.0	72.9
	115.0	63.97	5285	885	33.41	0.352	5.0	71.8
	115.0	65.30	5305	796	19.41	0.184	2.6	70.6
	115.0	66.29	5290	703	5.05	0.042	0.6	69.4
	115.0	66.41	5233	604	7.83	0.056	0.8	68.5
	115.0	66.31	5260	500	24.99	0.149	2.1	69.0
	115.0	67.21	5331	385	20.14	0.092	1.3	69.0
	115.0	67.88	5393	261	10.87	0.034	0.5	69.1
	115.0	68.33	5411	131	1.44	0.002	0.0	68.9
PUT OZ-FT	115.0	9.24	228	1787	0.94	0.020	6.1	21.5

DRAWING NO.	PAGE 3 of 8	REV.
	6K727BH	-

Performance Data



6K727BH REV. -



Dayton[®]

Curve Descriptions:
Motor(1) Test 2 Run 115V 60 Hz 4P

- SPEED vs WATTS
- SPEED vs TORQUE
- △ SPEED vs ILine

Motor Ratings:
C063FKJ130501 6K727BH

DRAWING NO.	PAGE 4 of 8	REV.
	6K727BH	-

Dayton Electric Mfg. Co. Lake Forest, IL 60045 USA

Performance Data



6K727BH REV.
-

Dayton Manufacturing Company

Motor Description

Model: C063FKJ130501 / 6K727BH
 Motor ID: 1 of 1
 Poles: 4
 Volts: 115/230
 Frequency: 60
 HP: 1
 Speed: 1725
 Phase: 1
 Protector: CED3721

Test Conditions

Test Type: Start
 Test Number: 9
 Poles: 4
 Volts: 230
 Hz: 60
 Rotation:
 Special Cond:
 Speed Conn:
 TestBoard: Amtps Performance Fixture #1
 Run Cap: 0
 Start Cap: 594 μfd
 Environment:
 Tested: 12/9/2009 9:15:49 AM
 Tested By: Sharp, Gerald
 Gear Ratio: 1:1
 Bearing Friction: 3.36 Oz-Ft
 Windage Torque: 0.32 Oz-Ft

Special Points	Vline (V)	Vaux (V)	Vcap (V)	Iline (A)	Imain (A)	Iaux (A)	Watts	RPM	Tq (Oz-ft)	HP	Eff (%)	PF (%)	Cap
	230.0	171.5	115.8	37.87	37.55	26.37	7686	11	175.1	0.023	0.2	88.2	604.2
	230.0	171.8	115.2	37.86	37.40	26.19	7679	41	168.5	0.083	0.8	88.2	602.9
PUT OZ-FT	230.0	174.8	113.8	37.80	36.60	25.93	7707	172	156.6	0.321	3.1	88.6	604.1
	230.0	175.0	113.7	37.78	36.51	25.84	7697	186	158.8	0.351	3.4	88.6	602.6
	230.0	178.4	112.2	37.54	35.41	25.51	7679	319	163.0	0.620	6.0	88.9	603.0
	230.0	180.8	110.7	37.19	34.41	25.11	7628	442	162.4	0.854	8.4	89.2	601.6
	230.0	183.9	107.8	36.71	33.35	24.48	7550	557	164.0	1.088	10.7	89.4	602.2
	230.0	188.5	105.5	36.68	32.30	23.83	7536	663	164.9	1.302	12.9	89.3	599.3
	230.0	193.7	104.7	36.90	30.84	23.70	7654	762	177.8	1.613	15.7	90.2	600.7
	230.0	198.2	104.5	36.77	29.19	23.64	7704	856	192.8	1.964	19.0	91.1	599.9
	230.0	202.9	104.0	36.46	27.36	23.56	7732	943	205.7	2.309	22.3	92.2	600.9
	230.0	207.5	103.9	36.16	25.58	23.52	7739	1023	216.0	2.630	25.4	93.1	600.7
	230.0	212.2	104.0	35.76	23.67	23.53	7723	1095	225.6	2.942	28.4	93.9	600.4
	230.0	217.1	104.4	35.37	21.71	23.64	7713	1164	234.7	3.251	31.4	94.8	600.5
	230.0	222.1	105.3	34.96	19.66	23.85	7687	1226	240.8	3.514	34.1	95.6	600.6
	230.0	227.3	106.4	34.51	17.58	24.15	7655	1282	245.2	3.741	36.5	96.4	602.0
	230.0	232.0	107.9	34.03	15.42	24.51	7593	1335	248.1	3.943	38.7	97.0	602.3
	230.0	236.8	109.9	33.56	13.26	24.95	7528	1383	247.6	4.076	40.4	97.5	602.1
	230.0	241.9	112.1	33.01	11.07	25.52	7459	1425	244.4	4.147	41.5	98.2	604.0
	230.0	246.8	114.5	32.47	8.91	26.14	7377	1466	239.1	4.174	42.2	98.8	605.7
	230.0	251.5	117.3	31.93	6.79	26.82	7283	1503	231.5	4.142	42.4	99.2	606.7
	230.0	256.2	120.1	31.38	4.79	27.57	7179	1536	221.1	4.043	42.0	99.5	608.8
	230.0	260.3	123.3	30.79	3.07	28.34	7051	1565	209.1	3.897	41.2	99.6	609.9
	230.0	264.5	126.2	30.20	2.34	29.15	6926	1594	193.3	3.668	39.5	99.7	612.7
	230.0	268.7	129.3	29.60	3.15	29.99	6795	1620	177.5	3.423	37.6	99.8	615.0
	230.0	272.1	132.9	28.97	4.75	30.86	6638	1643	160.0	3.129	35.2	99.6	615.9
	230.0	275.8	136.3	28.33	6.58	31.80	6492	1665	140.4	2.783	32.0	99.6	618.9
	230.0	279.3	140.0	27.65	8.49	32.80	6332	1687	117.1	2.351	27.7	99.6	621.6
	230.0	282.2	143.8	26.94	10.45	33.77	6145	1706	93.4	1.897	23.0	99.2	622.9
	230.0	284.9	147.0	26.15	12.39	34.74	5945	1723	67.9	1.393	17.5	98.8	626.8
	230.0	287.1	150.5	25.32	14.28	35.69	5730	1742	40.6	0.842	11.0	98.4	629.0
	230.0	289.5	154.1	24.34	16.34	36.74	5486	1759	12.7	0.267	3.6	98.0	632.4
	230.0	289.9	155.5	23.77	17.41	37.24	5338	1769	0.0	0.000	0.0	97.6	635.2

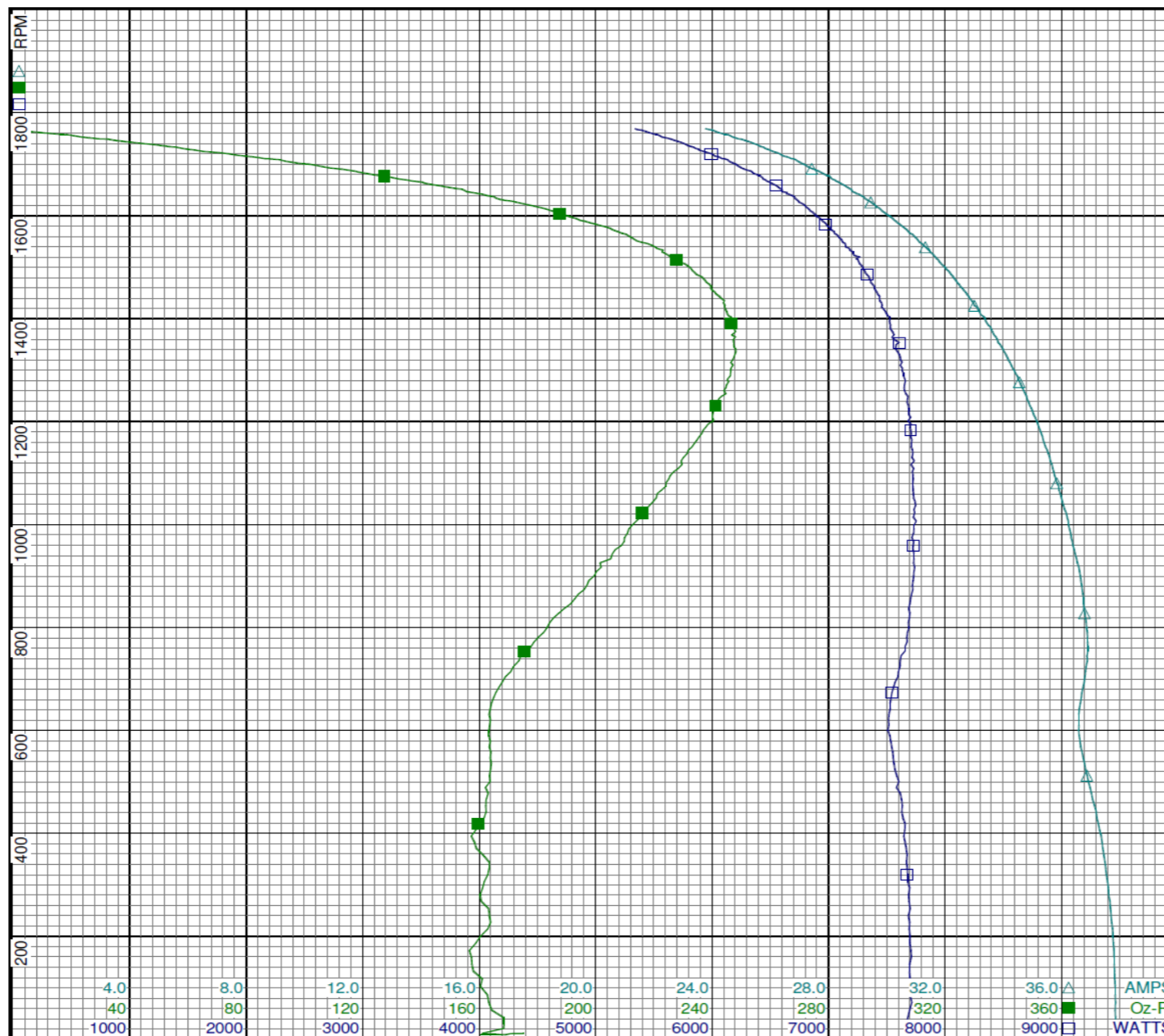
DRAWING NO. PAGE 5 of 8 REV.
6K727BH -

Dayton Electric Mfg. Co. Lake Forest, IL 60045 USA

Performance Data



6K727BH REV. -



Dayton

Curve Descriptions:
Motor(1) Test 9 Start 230V 60 Hz 4P

- SPEED vs WATTS
- SPEED vs TORQUE
- △ SPEED vs ILine

Motor Ratings:
C063FKJ130501 6K727BH

DRAWING NO.	PAGE 6 of 8	REV.
	6K727BH	-

Dayton Electric Mfg. Co. Lake Forest, IL 60045 USA

Performance Data



6K727BH	REV. -
----------------	-----------

Dayton Manufacturing Company

Motor Description

Model: C063FKJ130501 / 6K727BH
Motor ID: 1 of 1
Poles: 4
Volts: 115/230
Frequency: 60
HP: 1
Speed: 1725
Phase: 1
Protector: CED3721

Test Conditions

Test Type: Run
Test Number: 10
Poles: 4
Volts: 230
Hz: 60
Rotation:
Special Cond:
Speed Conn:
TestBoard: Amps Performance Fixture #1
Run Cap: 0
Start Cap: 594 μ fd
Environment:
Tested: 12/9/2009 9:14:45 AM
Tested By: Sharp, Gerald
Gear Ratio: 1:1
Bearing Friction: -0.16 Oz-Ft
Windage Torque: -3.04 Oz-Ft

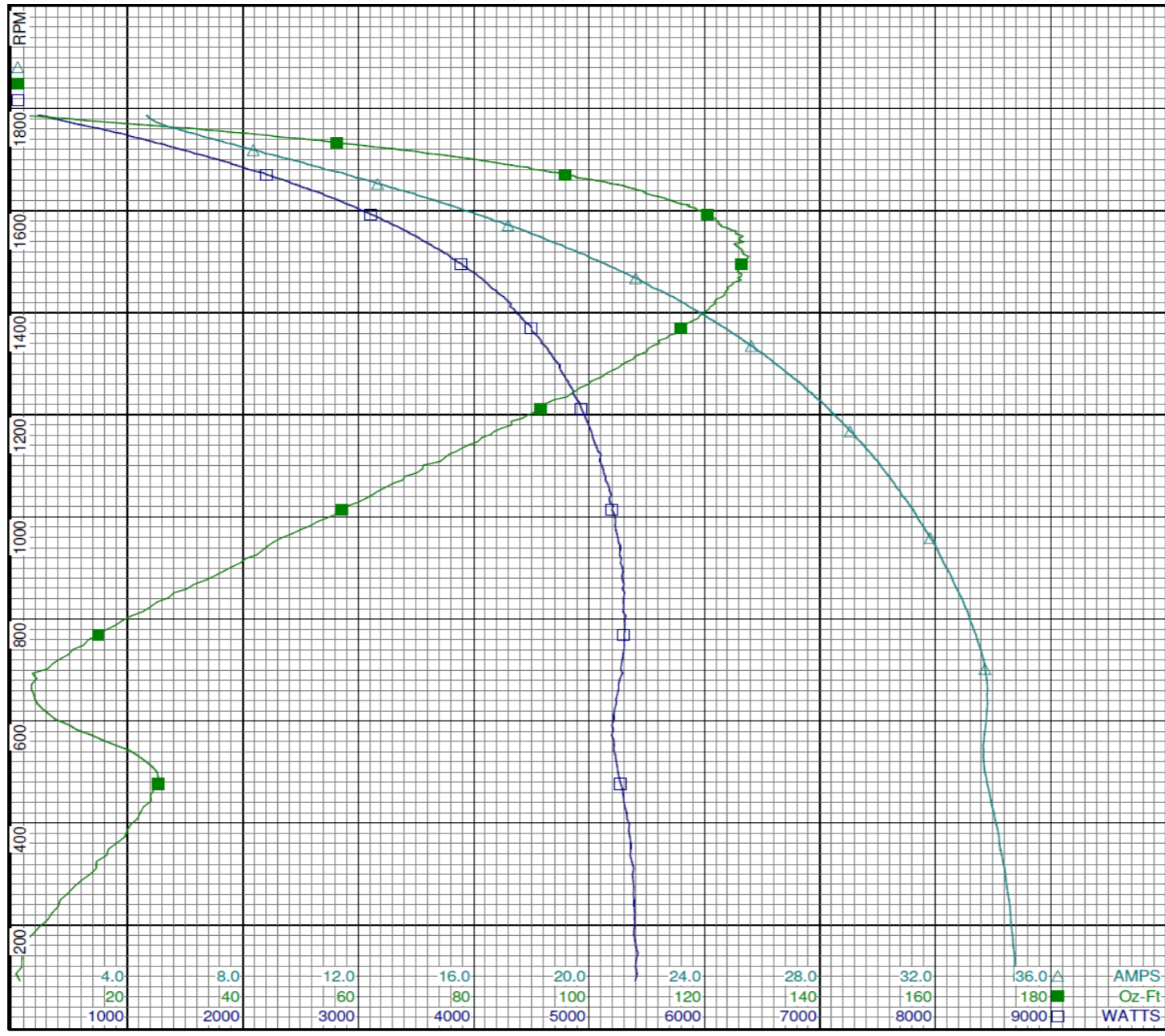
Special Points	Vline(V)	Iline(A)	Watts	RPM	Tq(Oz-ft)	HP	Eff(%)	PF(%)
	230.0	4.64	224	1787	0.00	0.000	0.0	21.0
	230.0	5.22	593	1768	22.44	0.472	59.4	49.4
	230.0	6.27	937	1751	40.61	0.847	67.4	65.0
48.7 OZ-FT	230.0	6.82	1090	1742	48.70	1.010	69.1	69.5
1 HP	230.0	6.79	1082	1743	48.21	1.000	69.0	69.3
56 OZ-FT	230.0	7.40	1238	1733	56.00	1.155	69.6	72.8
	230.0	7.55	1280	1731	57.51	1.185	69.1	73.8
61.6 OZ-FT	230.0	7.86	1354	1726	61.60	1.266	69.7	74.9
1725 RPM	230.0	7.93	1373	1725	62.39	1.281	69.6	75.3
	230.0	8.92	1610	1711	73.32	1.493	69.2	78.5
	230.0	10.37	1940	1689	86.61	1.742	67.0	81.4
	230.0	11.91	2276	1665	97.85	1.939	63.6	83.1
	230.0	13.44	2592	1640	108.63	2.120	61.0	83.8
	230.0	15.01	2895	1613	115.83	2.225	57.3	83.8
	230.0	16.58	3198	1584	121.88	2.298	53.6	83.9
	230.0	18.12	3474	1552	125.93	2.327	50.0	83.4
	230.0	19.67	3744	1517	126.61	2.286	45.5	82.8
BDT OZ-FT	230.0	19.97	3793	1510	127.59	2.293	45.1	82.6
	230.0	21.17	3992	1479	125.81	2.215	41.4	82.0
	230.0	22.62	4204	1439	123.51	2.116	37.5	80.8
	230.0	24.02	4398	1394	119.14	1.978	33.5	79.6
	230.0	25.35	4582	1345	111.97	1.793	29.2	78.6
	230.0	26.64	4742	1292	105.07	1.616	25.4	77.4
	230.0	27.83	4877	1235	96.21	1.414	21.6	76.2
	230.0	28.94	5006	1174	85.04	1.189	17.7	75.2
	230.0	30.01	5095	1108	74.15	0.978	14.3	73.8
	230.0	30.94	5173	1036	61.32	0.756	10.9	72.7
	230.0	31.83	5249	958	46.66	0.532	7.6	71.7
	230.0	32.60	5290	876	33.53	0.350	4.9	70.6
	230.0	33.27	5310	787	17.88	0.167	2.4	69.4
	230.0	33.74	5287	693	3.53	0.029	0.4	68.1
	230.0	33.74	5197	592	9.94	0.070	1.0	67.0
	230.0	33.76	5258	489	25.30	0.147	2.1	67.7
	230.0	34.21	5352	373	19.51	0.087	1.2	68.0
	230.0	34.55	5389	249	8.31	0.025	0.3	67.8
	230.0	34.74	5402	118	1.65	0.002	0.0	67.6
PUT OZ-FT	230.0	4.65	233	1787	0.65	0.014	4.0	21.8

DRAWING NO.	PAGE 7 of 8	REV.
	6K727BH	-

Performance Data



6K727BH REV. -



Dayton

Curve Descriptions:
Motor(1) Test 10 Run 230V 60 Hz 4P

- SPEED vs WATTS
- SPEED vs TORQUE
- △ SPEED vs ILine

Motor Ratings:
C063FKJ130501 6K727BH

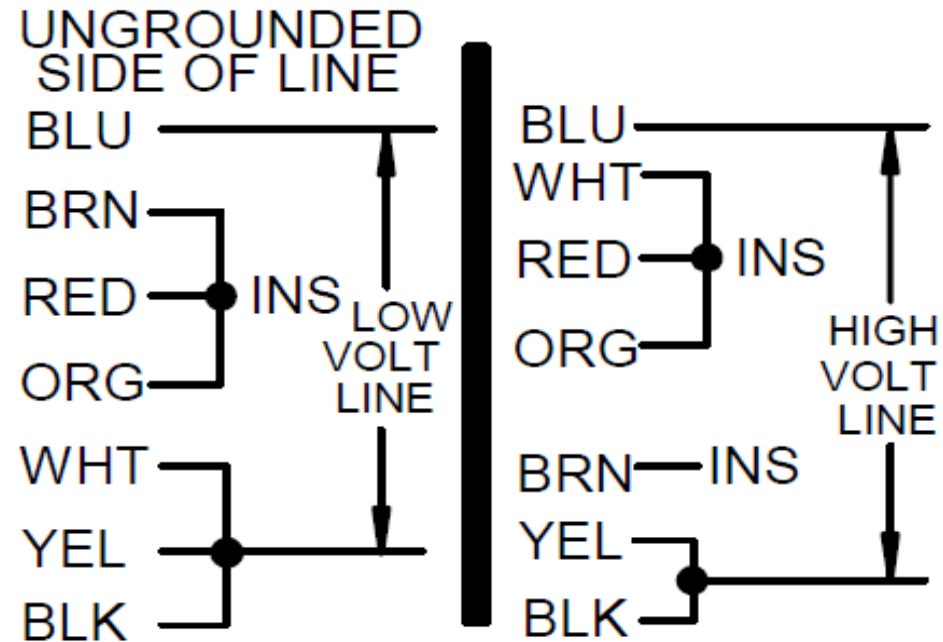
DRAWING NO. PAGE 8 of 8 REV.
6K727BH -

Dayton Electric Mfg. Co. Lake Forest, IL 60045 USA

6K727BH

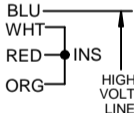
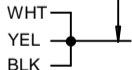
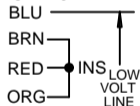
REV.
-

CONNECTIONS



MOTOR IS CCW ROTATION LEAD END
TO REVERSE ROTATION INTERCHANGE
RED AND BLACK LEADS

DRAWING NO.	PAGE 1 of 1	REV.
6K727BH		-

Dayton[®]**FARM DUTY MOTOR****HP:** 1
VOLTS: 115/230**Part No** 6K727BH**AMPS:** 14.0/7.0**RPM:** 1725**DUTY:** CONT**SF:** 1.15**KVA CODE:** K**ENCL:** TEFC**THERMALLY PROTECTED:** MANUALMFG. NO. PROT. CODE: 01020AVG. F.L.
EFF.**MTR REF:** C63BXFKJ-1305**PH:** 1**HZ:** 60**FR:** 56H**INS CL:** F**AMB:** 40 °C**SFA:** 14.6/7.3**Disconnect Power Before Making Any
Electrical Connections or Changes****CONNECTIONS**UNGROUND
SIDE OF LINE**MOTOR IS CCW ROTATION LEAD END
TO REVERSE ROTATION INTERCHANGE
RED AND BLACK LEADS**

E37403



258501

Mfd for Dayton Electric Mfg. Co., Lake Forest, IL 60045 USA

Made in Mexico