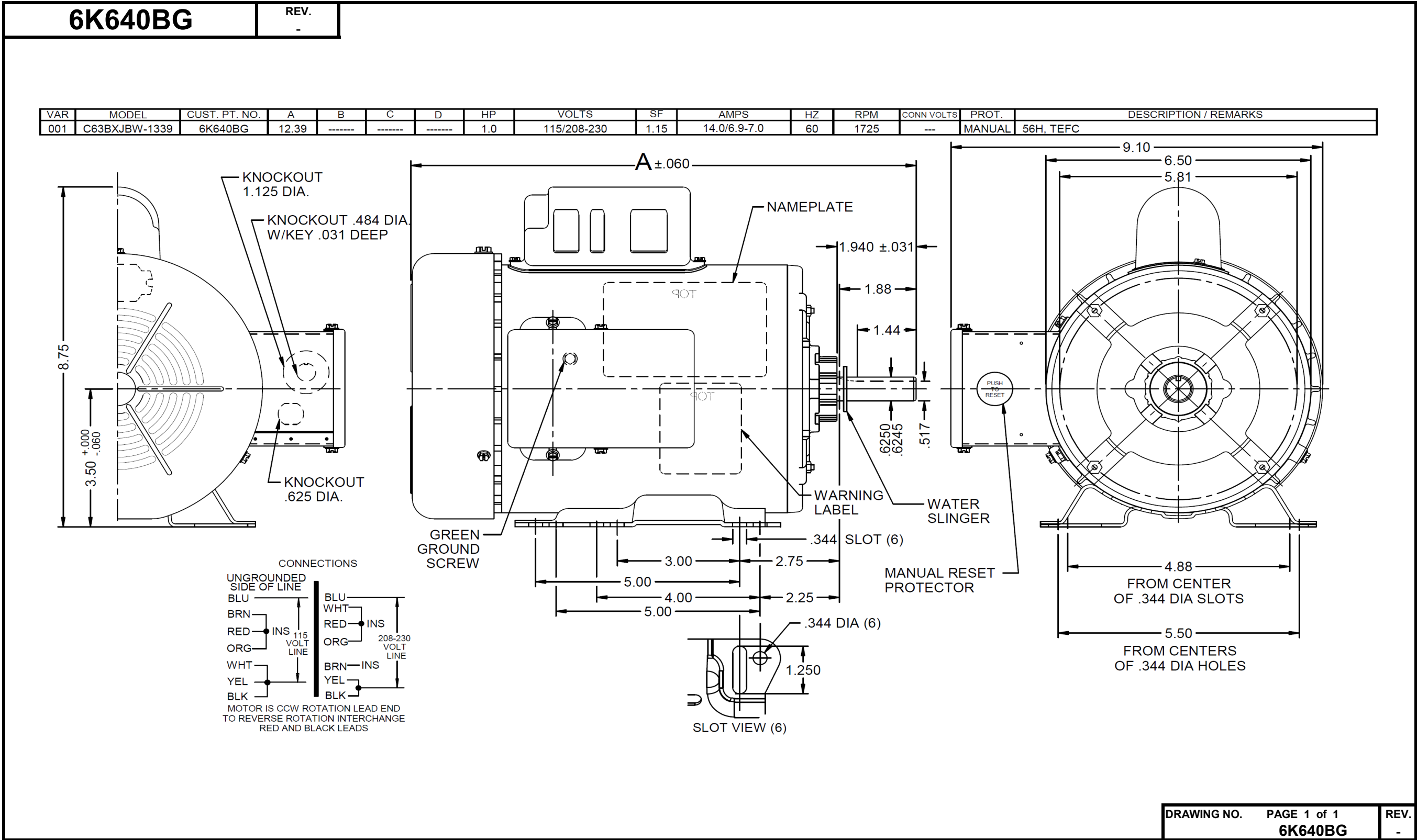


Dimensional Drawing



DRAWING NO. PAGE 1 of 1 REV.
6K640BG -

Performance Data



6K640BG

REV.
-

MOTOR PERFORMANCE

HP:	1							
Poles:	4							
No. of Speeds:	1							
Volts:	115/208-230	115	208	230				
HZ:	60	60	60	60				
Service Factor:	1.15							
Efficiency:	@ Rated Load	72.1	76.5	75.7				
Power Factor:	@ Rated Load	42.6	70.9	63.9				
Amps:	@ No Load							
	@ Rated Load	13.4	6.64	6.77				
	@ Service Factor	14.4	6.64	7.21				
	@ Locked Rotor	78.2	34.99	39.43				
RPM:	@ Rated Load	1752	1734	1742				
Ambient (°C):	40							
Altitude (FASL):								
Torques:	Breakdown	140.4	110.23	137.7				
	Locked Rotor	172.4	128.77	157.9				
	Pull-Up	169.9	125.8	156.3				
	Rated Load	48.7	48.7	48.7				
	Service Factor	55.38	48.7	55.79				
Watts:	Rated Load	979	980	996				
KVA Code:	L	K	J	L				
Temperature Rise:	@ Rated Load	79.9	73.8	75.8				
	@ Service Factor	83.5	-	87				
Thermal Protector:	Trip Temp (°C)	132.7	149.4	150				
Winding Material:	Start (Auxiliary)	Cu	Cu	Cu				
	Run (Main)	Cu	Cu	Cu				
Capacitor(s):	Start (MFD / Volts)	590 mFd, 110v						
	No. of Start Capacitors							
	Run (MFD / Volts)	NA						
	No. of Run Capacitors							
LOW SPEED PERFORMANCE DATA:								
HP:								
Poles:								
Volts:								
HZ:								
Efficiency:	@ Rated Load							
Power Factor:	@ Rated Load							
Amps:	@ No Load							
	@ Rated Load							
	@ Service Factor							
	@ Locked Rotor							
Torques:	Break Down							
	Locked Rotor							
	Pull-Up							
	Rated Load							
	Service Factor							
Watts:	@ Rated Load							
Temperature Rise:	@ Rated Load							
	@ Service Factor							

DRAWING NO. PAGE 1 of 1 REV.
6K640BG -

Dayton Electric Mfg. Co. Lake Forest, IL 60045 USA

Performance Data



6K640BG		REV.	Dayton Manufacturing Company										
Motor Description			Test Conditions										
Model:	C063JBW1339	6K640BG	Test Type:	Start	Run Cap:	0							
Motor ID:	No.1 Of 2		Test Number:	1	Start Cap:	590 µFd							
Poles:	4		Poles:	4	Environment:								
Volts:	115/208-230		Volts:	115	Tested:	10/11/2005 9:32:44 PM							
Frequency:	60		Hz:	60	Tested By:	Taylor, Melvin							
HP:	1		Rotation:		Gear Ratio:	1:1							
Speed:	1725		Special Cond:		Bearing Friction:	-0.29 Oz-Ft							
Phase:	1		Speed Conn:		Windage Torque:	-1.19 Oz-Ft							
Protector:	CEJ51CB		TestBoard:	Amps Performance	Fixture #3								
Special Points	Vline (V)	Vaux (V)	Vcap (V)	Iline (A)	Imain (A)	Iaux (A)	Watts	RPM	Tq (Oz-ft)	HP	Eff (%)	PF (%)	Cap
PUT OZ-FT	115.0	103.4	133.3	78.23	71.24	30.13	8050	17	172.4	0.034	0.3	89.5	599.7
	115.0	103.0	132.8	78.20	71.27	30.06	8038	14	169.9	0.028	0.3	89.4	600.3
	115.0	103.6	132.7	78.28	71.06	30.03	8052	33	174.2	0.068	0.6	89.4	600.5
	115.0	104.7	130.4	78.14	70.34	29.49	8050	162	174.2	0.335	3.1	89.6	599.9
	115.0	106.6	127.4	77.73	69.04	28.80	8029	306	187.8	0.684	6.4	89.8	599.6
	115.0	108.1	124.6	76.98	67.62	28.15	7983	441	197.3	1.037	9.7	90.2	599.1
	115.0	109.6	120.9	76.26	66.29	27.35	7910	562	204.9	1.370	12.9	90.2	599.8
	115.0	112.7	118.0	76.23	65.40	26.59	7912	670	211.0	1.682	15.9	90.3	597.5
	115.0	117.6	116.5	76.69	64.15	26.32	8026	771	224.2	2.057	19.1	91.0	599.1
	115.0	122.2	115.7	76.61	62.54	26.09	8083	864	237.0	2.439	22.5	91.7	598.5
	115.0	126.8	114.7	76.32	60.81	25.90	8119	952	247.8	2.808	25.8	92.5	599.0
	115.0	131.7	114.0	75.83	59.03	25.76	8142	1030	257.3	3.156	28.9	93.4	599.2
	115.0	136.5	113.7	75.39	57.26	25.68	8150	1103	264.8	3.478	31.8	94.0	599.2
	115.0	141.8	113.8	74.96	55.51	25.68	8156	1170	269.8	3.758	34.4	94.6	598.8
	115.0	147.3	114.3	74.47	53.75	25.78	8163	1230	273.3	4.003	36.6	95.3	598.4
BDT OZ-FT	115.0	151.8	115.1	74.23	52.19	25.73	8181	1276	274.5	4.170	38.0	95.8	593.2
	115.0	152.9	115.4	74.19	51.85	25.76	8179	1287	274.4	4.203	38.3	95.9	592.4
	115.0	158.8	117.0	73.53	50.23	26.34	8152	1338	273.6	4.360	39.9	96.4	597.0
	115.0	164.8	119.2	73.04	48.57	26.88	8132	1385	270.5	4.460	40.9	96.8	598.2
	115.0	170.9	121.9	72.67	46.74	27.79	8085	1428	265.5	4.513	41.6	96.7	604.6
	115.0	176.9	125.0	71.85	45.45	28.35	8071	1467	258.2	4.510	41.7	97.7	601.5
	115.0	182.8	128.7	71.16	43.87	29.20	8026	1504	248.5	4.448	41.3	98.1	602.1
	115.0	188.5	132.6	70.49	42.34	30.13	7986	1536	237.1	4.335	40.5	98.5	602.9
	115.0	194.3	136.9	69.76	40.81	31.18	7938	1566	223.2	4.162	39.1	99.0	604.3
	115.0	199.5	141.3	68.93	39.23	32.25	7860	1594	207.1	3.929	37.3	99.1	605.5
	115.0	204.8	145.9	68.09	37.69	33.42	7785	1620	190.1	3.665	35.1	99.4	607.5
	115.0	209.4	150.2	67.31	36.20	34.43	7711	1642	171.5	3.353	32.4	99.6	608.0
	115.0	213.9	154.7	66.24	34.65	35.64	7599	1664	150.3	2.977	29.2	99.8	610.9
	115.0	218.1	159.0	65.10	33.13	36.83	7479	1684	128.0	2.566	25.6	99.9	614.4
	115.0	221.9	162.8	63.94	31.70	37.93	7347	1703	104.9	2.126	21.6	99.9	618.1
	115.0	224.6	166.8	62.42	30.10	38.99	7157	1722	79.4	1.627	17.0	99.7	620.0
1725 RPM	115.0	226.4	167.5	62.14	29.80	39.34	7151	1725	73.5	1.509	15.7	100.1	622.9
60.87 OZ-FT	115.0	228.1	169.4	61.52	29.11	39.90	7088	1734	60.9	1.256	13.2	100.2	624.6
56 OZ-FT	115.0	228.6	170.1	61.29	28.82	40.11	7053	1737	56.0	1.158	12.3	100.1	625.5
	115.0	229.0	170.5	61.19	28.60	40.28	7033	1739	52.6	1.090	11.6	100.0	626.5
1 HP	115.0	229.4	171.1	60.79	28.38	40.44	6998	1742	48.2	1.000	10.7	100.1	627.0
48.7 OZ-FT	115.0	229.4	171.0	60.81	28.41	40.42	7001	1742	48.7	1.010	10.8	100.1	626.9
36.52 OZ-FT	115.0	230.8	172.6	60.02	27.68	40.93	6920	1750	36.5	0.761	8.2	100.3	628.8
24.35 OZ-FT	115.0	231.9	174.2	59.47	26.98	41.39	6837	1757	24.4	0.509	5.6	100.0	630.4
	115.0	232.0	174.3	59.45	26.94	41.42	6832	1757	23.8	0.497	5.4	99.9	630.5
12.17 OZ-FT	115.0	233.1	175.6	58.71	26.26	41.89	6748	1764	12.2	0.256	2.8	99.9	632.7
	115.0	234.0	176.8	57.81	25.47	42.40	6643	1774	0.0	0.000	0.0	99.9	635.9

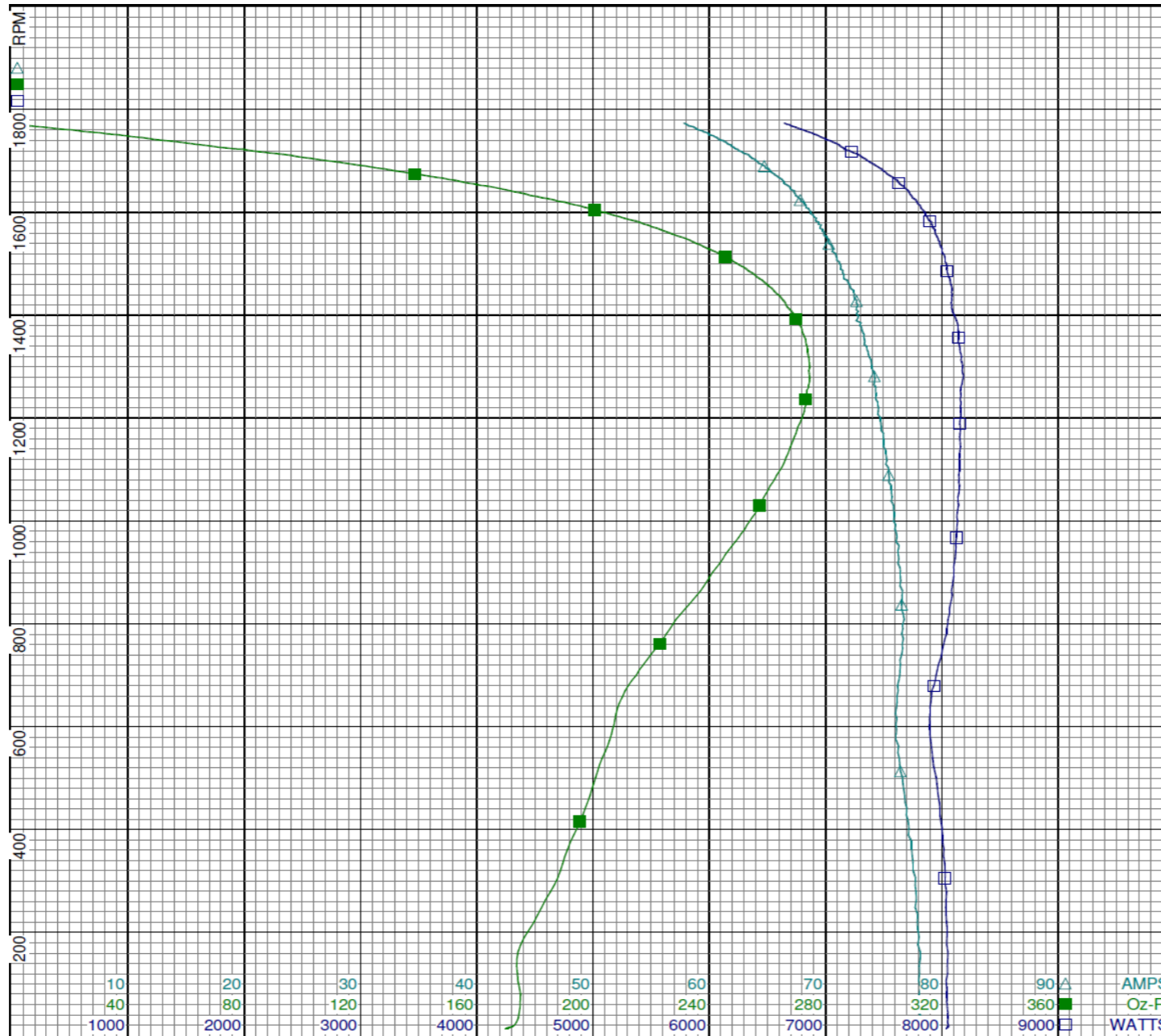
DRAWING NO.	PAGE 1 of 8	REV.
6K640BG		-

Dayton Electric Mfg. Co. Lake Forest, IL 60045 USA

Performance Data



6K640BG REV. -



Dayton

Curve Descriptions:
Motor(1) Test 1 Start 115V 60 Hz 4P

- SPEED vs WATTS
- SPEED vs TORQUE
- △ SPEED vs ILine

Motor Ratings:
(1) C063JBW1339 6K640BG

DRAWING NO.	PAGE 2 of 8	REV.
	6K640BG	-

Dayton Electric Mfg. Co. Lake Forest, IL 60045 USA

Performance Data



6K640BG	REV. -
----------------	-----------

Dayton Manufacturing Company

Motor Description

Model: C063JBW1339 6K640BG
 Motor ID: No.1 Of 2
 Poles: 4
 Volts: 115/208-230
 Frequency: 60
 HP: 1
 Speed: 1725
 Phase: 1
 Protector: CEJ51CB

Test Conditions

Test Type: Run
 Test Number: 2
 Poles: 4
 Volts: 115
 Hz: 60
 Rotation:
 Special Cond:
 Speed Conn:
 TestBoard:

Run Cap: 0
 Start Cap: 590 μ Fd
 Environment:
 Tested: 10/11/2005 10:18:11 PM
 Tested By: Taylor, Melvin
 Gear Ratio: 1:1
 Bearing Friction: -0.22 Oz-Ft
 Windage Torque: -1.15 Oz-Ft
 Amps Performance Fixture #3

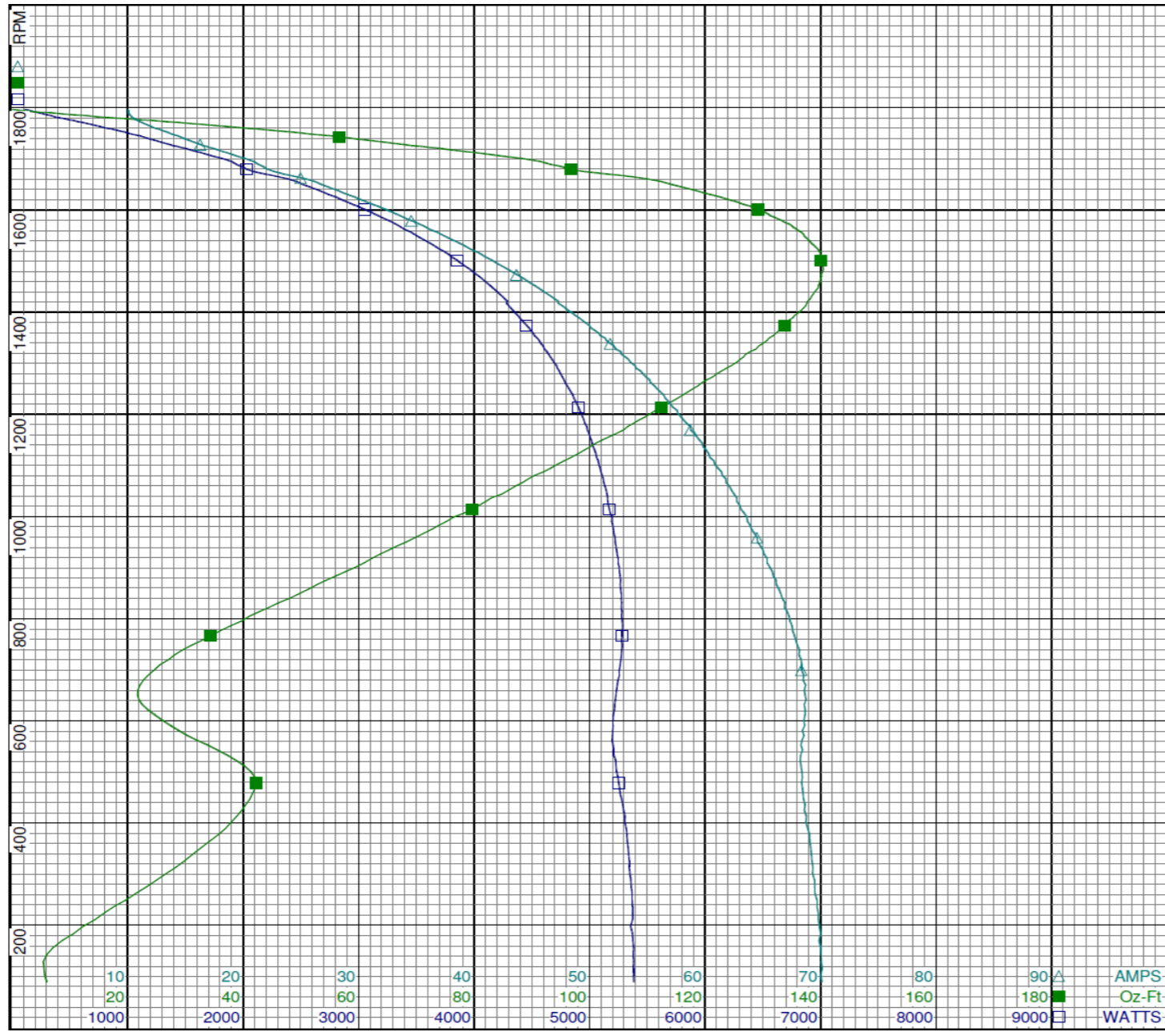
Special Points	Vline (V)	Vaux (V)	Iline (A)	Watts	RPM	Tq (Oz-ft)	HP	Eff (%)	PF (%)
12.17 OZ-FT	115.0	120.4	10.03	111	1796	0.00	0.000	0.0	9.6
	115.0	119.0	10.23	326	1785	12.17	0.259	59.1	27.7
	115.0	118.2	10.58	452	1778	19.59	0.415	68.5	37.1
24.35 OZ-FT	115.0	117.6	10.88	533	1775	24.35	0.515	72.1	42.6
36.52 OZ-FT	115.0	116.0	11.96	749	1764	36.52	0.767	76.4	54.4
	115.0	115.3	12.46	831	1759	40.92	0.857	76.9	58.0
1 HP	115.0	114.2	13.35	965	1753	47.92	1.000	77.3	62.9
48.7 OZ-FT	115.0	114.0	13.44	979	1752	48.70	1.016	77.4	63.3
56 OZ-FT	115.0	112.7	14.45	1121	1744	56.00	1.162	77.4	67.5
1.15 HP	115.0	112.8	14.36	1110	1744	55.38	1.150	77.3	67.2
	115.0	112.1	14.81	1165	1740	58.38	1.210	77.4	68.4
60.87 OZ-FT	115.0	111.7	15.19	1216	1737	60.87	1.259	77.2	69.6
1725 RPM	115.0	110.1	16.65	1408	1725	69.87	1.435	76.0	73.5
	115.0	109.0	17.38	1494	1720	74.00	1.516	75.7	74.8
	115.0	105.3	20.40	1845	1699	89.28	1.806	73.0	78.7
	115.0	102.2	22.72	2095	1675	99.23	1.978	70.5	80.2
	115.0	97.1	26.73	2513	1650	114.08	2.241	66.5	81.8
	115.0	92.7	30.00	2836	1622	123.60	2.386	62.8	82.2
	115.0	87.9	33.26	3138	1592	130.90	2.480	59.0	82.0
	115.0	83.3	36.46	3425	1559	136.17	2.527	55.1	81.7
	115.0	78.5	39.68	3700	1523	139.52	2.530	51.0	81.1
BDT OZ-FT	115.0	73.9	42.75	3949	1486	140.43	2.484	46.9	80.3
	115.0	73.9	42.75	3949	1486	140.43	2.484	46.9	80.3
	115.0	68.9	45.81	4183	1443	139.26	2.393	42.7	79.4
	115.0	64.2	48.53	4358	1398	136.04	2.263	38.7	78.1
	115.0	59.4	51.35	4545	1349	131.06	2.105	34.6	77.0
	115.0	54.8	53.93	4713	1295	124.53	1.920	30.4	76.0
	115.0	50.2	56.40	4853	1238	116.19	1.713	26.3	74.8
	115.0	45.8	58.69	4976	1176	106.59	1.492	22.4	73.7
	115.0	41.5	60.76	5074	1108	95.54	1.261	18.5	72.6
	115.0	37.4	62.72	5154	1036	83.04	1.025	14.8	71.5
	115.0	33.6	64.51	5219	959	69.79	0.796	11.4	70.3
	115.0	29.8	66.15	5267	875	54.39	0.567	8.0	69.2
	115.0	26.2	67.52	5284	786	37.83	0.354	5.0	68.1
	115.0	22.0	68.54	5258	689	23.54	0.193	2.7	66.7
	115.0	17.0	68.62	5204	591	27.41	0.193	2.8	65.9
	115.0	12.4	68.40	5245	490	42.00	0.245	3.5	66.7
	115.0	10.2	69.04	5323	377	35.68	0.160	2.2	67.0
	115.0	7.5	69.67	5368	249	19.66	0.058	0.8	67.0
PUT OZ-FT	115.0	119.7	10.07	215	1790	5.40	0.115	39.7	18.5
	115.0	4.3	70.13	5379	115	5.48	0.007	0.1	66.7

DRAWING NO.	PAGE 3 of 8	REV.
	6K640BG	-

Performance Data



6K640BG REV. -



Dayton

Curve Descriptions:
Motor(1) Test 2 Run 115V 60 Hz 4P

- SPEED vs WATTS
- SPEED vs TORQUE
- △ SPEED vs ILine

Motor Ratings:
(1) C063JBW1339 6K640BG

DRAWING NO. PAGE 4 of 8 REV. -
6K640BG

Dayton Electric Mfg. Co. Lake Forest, IL 60045 USA

Performance Data



6K640BG REV.
-

Dayton Manufacturing Company

Motor Description

Model: C063JBW1339 6K640BG
 Motor ID: No.1 Of 2
 Poles: 4
 Volts: 115/208-230
 Frequency: 60
 HP: 1
 Speed: 1725
 Phase: 1
 Protector: CEJ51CB

Test Conditions

Test Type: Start Run Cap: 0
 Test Number: 9 Start Cap: 590 µFd
 Poles: 4 Environment:
 Volts: 230 Tested: 10/11/2005 10:44:34 PM
 Hz: 60 Tested By: Taylor, Melvin
 Rotation: Gear Ratio: 1:1
 Special Cond: Bearing Friction: -0.16 Oz-Ft
 Speed Conn: Windage Torque: -0.91 Oz-Ft
 TestBoard: Amps Performance Fixture #3

Special Points	Vline(V)	Vaux(V)	Vcap(V)	Iline(A)	Imain(A)	Iaux(A)	Watts	RPM	Tq(Oz-ft)	HP	Eff(%)	PF(%)	Cap
PUT OZ-FT	230.0	192.3	116.1	39.43	34.50	25.65	7924	17	157.9	0.032	0.3	87.4	586.2
	230.0	192.1	116.1	39.38	34.46	25.66	7926	14	156.3	0.027	0.3	87.5	586.2
	230.0	192.6	116.0	39.43	34.37	25.61	7923	34	159.9	0.064	0.6	87.4	585.9
	230.0	195.9	113.4	39.40	33.55	25.01	7927	162	163.4	0.315	3.0	87.5	584.8
	230.0	199.4	111.1	39.12	32.42	24.44	7888	305	171.6	0.624	5.9	87.7	583.6
	230.0	203.0	108.6	38.76	31.28	23.88	7841	440	181.7	0.952	9.1	88.0	583.2
	230.0	206.7	105.3	38.37	30.21	23.16	7764	561	188.7	1.260	12.1	88.0	583.2
	230.0	211.6	102.6	38.34	29.10	22.53	7766	669	192.6	1.534	14.7	88.1	582.6
	230.0	217.4	101.8	38.44	27.61	22.33	7855	769	201.6	1.846	17.5	88.9	581.6
	230.0	223.1	101.4	38.32	25.89	22.24	7907	863	213.3	2.191	20.7	89.7	582.0
	230.0	228.5	101.1	38.06	24.18	22.15	7926	951	222.5	2.519	23.7	90.6	581.4
	230.0	233.6	100.9	37.79	22.46	22.06	7938	1030	230.1	2.821	26.5	91.3	579.6
	230.0	239.2	101.1	37.39	20.78	22.17	7917	1102	236.0	3.096	29.2	92.1	581.7
	230.0	244.5	101.6	37.02	19.07	22.29	7894	1168	239.3	3.328	31.5	92.7	582.0
	230.0	250.1	102.6	36.65	17.36	22.53	7881	1229	241.2	3.530	33.4	93.5	582.6
	230.0	255.6	104.1	36.26	15.66	22.86	7851	1286	241.2	3.691	35.1	94.1	582.4
	230.0	261.1	106.0	35.84	14.01	23.30	7810	1338	239.0	3.805	36.3	94.7	583.0
	230.0	266.6	108.3	35.42	12.44	23.81	7766	1384	235.0	3.872	37.2	95.3	583.0
	230.0	271.8	111.0	35.00	11.02	24.44	7714	1427	229.4	3.898	37.7	95.8	584.3
	230.0	277.0	114.1	34.54	9.71	25.17	7659	1467	221.6	3.869	37.7	96.4	585.2
	230.0	282.1	117.6	34.11	8.70	25.97	7565	1503	212.1	3.793	37.4	96.4	585.8
	230.0	286.7	121.0	33.66	7.93	26.79	7504	1536	201.2	3.678	36.6	96.9	587.0
	230.0	291.2	124.8	32.83	7.48	27.93	7385	1567	188.2	3.510	35.5	97.8	593.5
	230.0	295.4	128.6	32.44	7.30	28.80	7329	1593	173.8	3.298	33.6	98.2	594.0
	230.0	299.3	132.5	31.89	7.61	29.80	7223	1619	158.2	3.049	31.5	98.5	596.7
	230.0	303.0	136.3	31.37	8.19	30.76	7127	1642	141.9	2.775	29.0	98.8	598.6
	230.0	306.4	140.2	30.76	9.01	31.77	7016	1664	123.8	2.452	26.1	99.2	601.3
	230.0	309.7	144.1	30.15	10.05	32.80	6884	1686	103.8	2.084	22.6	99.3	603.8
	230.0	312.6	147.7	29.53	11.11	33.79	6755	1704	84.6	1.716	18.9	99.5	606.9
	230.0	315.2	151.2	28.81	12.19	34.79	6598	1723	63.1	1.294	14.6	99.6	610.2
	230.0	317.9	155.1	28.07	13.54	35.85	6431	1741	39.9	0.826	9.6	99.6	613.3
	230.0	320.0	158.4	27.35	14.74	36.75	6269	1758	17.4	0.363	4.3	99.7	615.6
	230.0	321.2	160.6	26.64	15.86	37.47	6119	1773	0.0	0.000	0.0	99.9	619.0

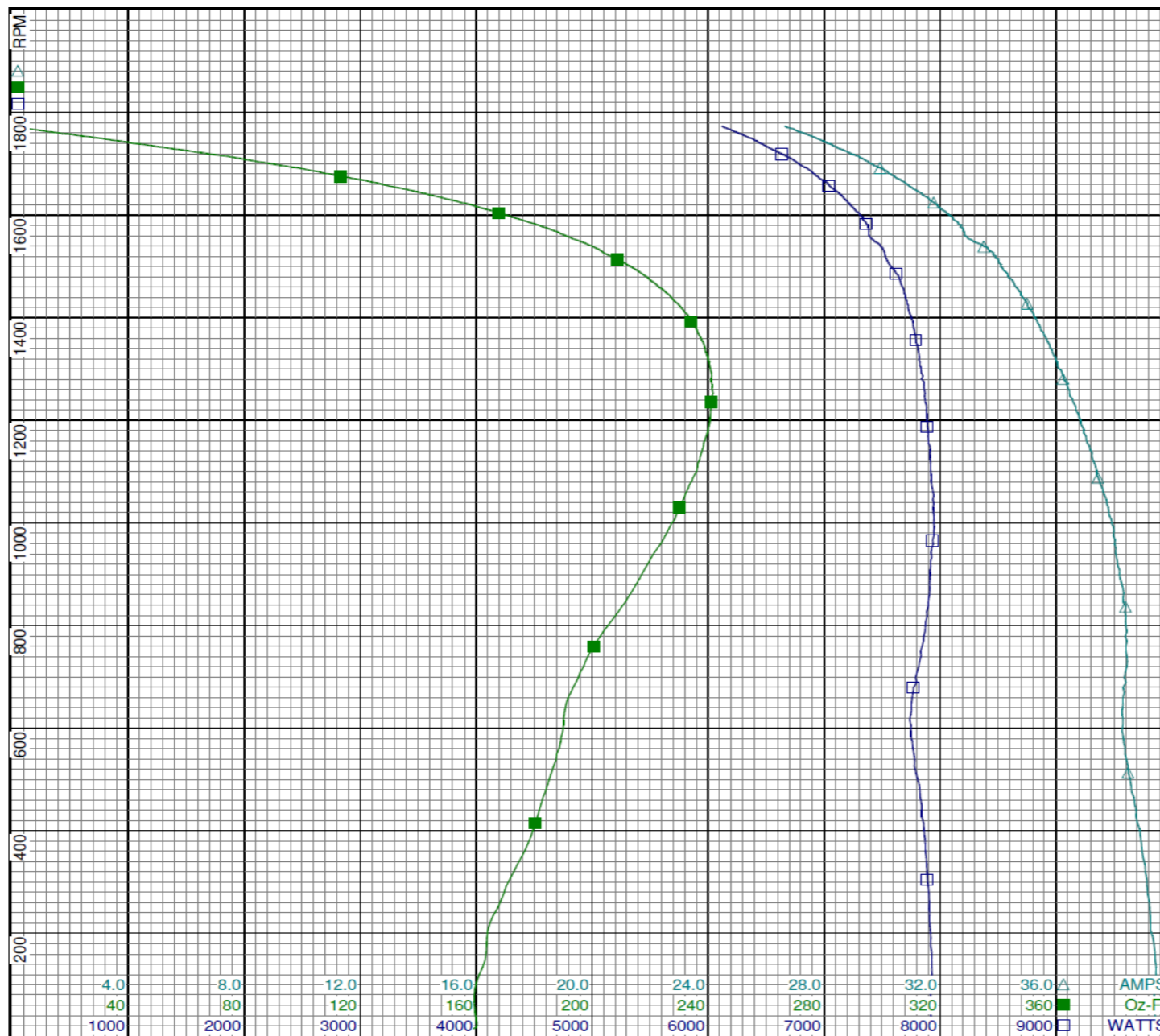
DRAWING NO. PAGE 5 of 8 REV.
6K640BG -

Dayton Electric Mfg. Co. Lake Forest, IL 60045 USA

Performance Data



6K640BG REV. -



Dayton

Curve Descriptions:
Motor(1) Test 9 Start 230V 60 Hz 4P

- SPEED vs WATTS
- SPEED vs TORQUE
- △ SPEED vs ILine

Motor Ratings:
(1) C063JBW1339 6K640BG

DRAWING NO.	PAGE 6 of 8	REV.
	6K640BG	-

Dayton Electric Mfg. Co. Lake Forest, IL 60045 USA

Performance Data



6K640BG	REV. -
----------------	-----------

Dayton Manufacturing Company

Motor Description

Model: C063JBW1339 6K640BG
 Motor ID: No.1 Of 2
 Poles: 4
 Volts: 115/208-230
 Frequency: 60
 HP: 1
 Speed: 1725
 Phase: 1
 Protector: CEJ51CB

Test Conditions

Test Type: Run
 Test Number: 10
 Poles: 4
 Volts: 230
 Hz: 60
 Rotation:
 Special Cond:
 Speed Conn:
 TestBoard: Amps Performance Fixture #3
 Run Cap: 0
 Start Cap: 590 μFd
 Environment:
 Tested: 10/11/2005 10:37:57 PM
 Tested By: Taylor, Melvin
 Gear Ratio: 1:1
 Bearing Friction: -0.13 Oz-Ft
 Windage Torque: -0.96 Oz-Ft

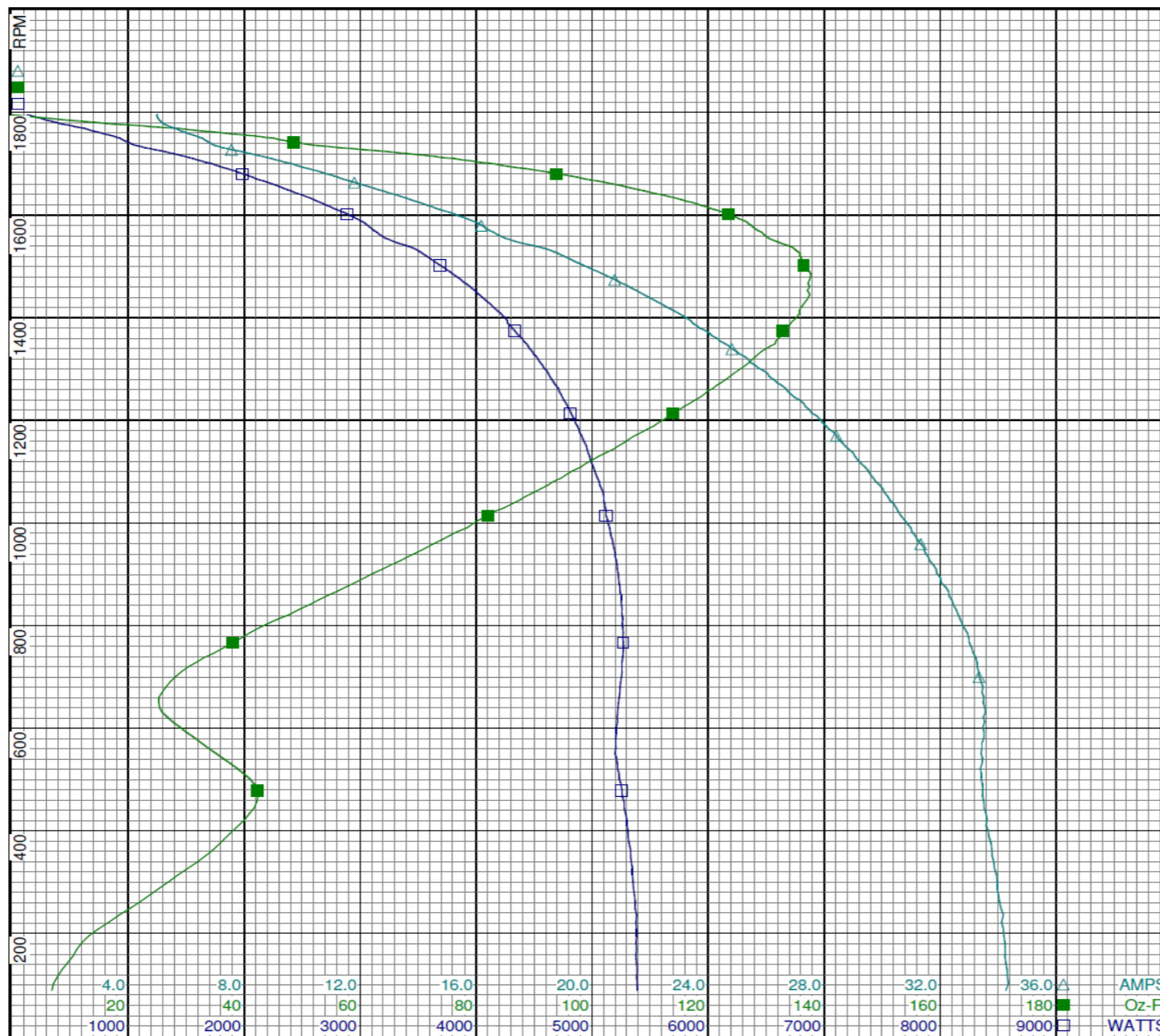
Special Points	Vline (V)	Iline (A)	Watts	RPM	Tq (Oz-ft)	HP	Eff (%)	PF (%)
	230.0	4.99	129	1795	0.00	0.000	0.0	11.2
12.17 OZ-FT	230.0	5.12	342	1782	12.17	0.258	56.3	29.0
	230.0	5.23	427	1777	17.35	0.367	64.1	35.5
24.35 OZ-FT	230.0	5.45	549	1772	24.35	0.514	69.7	43.8
36.52 OZ-FT	230.0	6.03	768	1760	36.52	0.765	74.3	55.4
	230.0	6.10	791	1758	37.58	0.787	74.2	56.4
1 HP	230.0	6.74	987	1743	48.21	1.000	75.6	63.6
48.7 OZ-FT	230.0	6.77	996	1742	48.70	1.010	75.7	63.9
	230.0	6.83	1013	1740	49.67	1.029	75.8	64.5
56 OZ-FT	230.0	7.22	1137	1731	56.00	1.154	75.8	68.4
1.15 HP	230.0	7.21	1133	1732	55.79	1.150	75.7	68.3
60.87 OZ-FT	230.0	7.59	1235	1727	60.87	1.251	75.6	70.8
1725 RPM	230.0	7.75	1277	1725	62.92	1.292	75.5	71.7
	230.0	8.20	1387	1719	68.05	1.393	74.9	73.5
	230.0	9.66	1725	1700	83.17	1.683	72.8	77.7
	230.0	11.09	2042	1676	96.33	1.922	70.2	80.0
	230.0	12.62	2373	1649	107.99	2.120	66.7	81.7
	230.0	14.18	2683	1622	118.01	2.278	63.3	82.3
	230.0	15.68	2969	1593	125.29	2.375	59.7	82.3
	230.0	16.86	3192	1558	129.94	2.411	56.3	82.3
	230.0	18.83	3539	1525	135.85	2.466	52.0	81.7
	230.0	20.33	3794	1486	137.63	2.434	47.9	81.1
BDT OZ-FT	230.0	20.49	3817	1482	137.70	2.429	47.5	81.0
	230.0	21.81	4031	1444	137.50	2.364	43.8	80.4
	230.0	23.26	4252	1399	135.15	2.251	39.5	79.5
	230.0	24.58	4431	1349	131.58	2.113	35.6	78.4
	230.0	25.90	4607	1297	125.11	1.931	31.3	77.3
	230.0	27.16	4755	1239	117.69	1.736	27.2	76.1
	230.0	28.33	4891	1176	108.52	1.520	23.2	75.1
	230.0	29.41	5009	1108	98.01	1.293	19.3	74.1
	230.0	30.41	5108	1036	86.11	1.062	15.5	73.0
	230.0	31.34	5178	959	72.63	0.829	11.9	71.8
	230.0	32.18	5238	875	57.51	0.599	8.5	70.8
	230.0	32.94	5267	786	40.93	0.383	5.4	69.5
	230.0	33.41	5245	690	27.24	0.224	3.2	68.3
	230.0	33.51	5209	591	30.10	0.212	3.0	67.6
	230.0	33.46	5248	490	41.78	0.244	3.5	68.2
	230.0	33.75	5316	376	35.87	0.161	2.3	68.5
	230.0	34.09	5370	248	20.28	0.060	0.8	68.5
	230.0	34.31	5381	115	7.80	0.011	0.1	68.2
PUT OZ-FT	230.0	5.03	252	1788	6.82	0.145	42.8	21.8

DRAWING NO.	PAGE 7 of 8	REV.
	6K640BG	-

Performance Data



6K640BG REV. -



Dayton

Curve Descriptions:
Motor(1) Test 10 Run 230V 60 Hz 4P

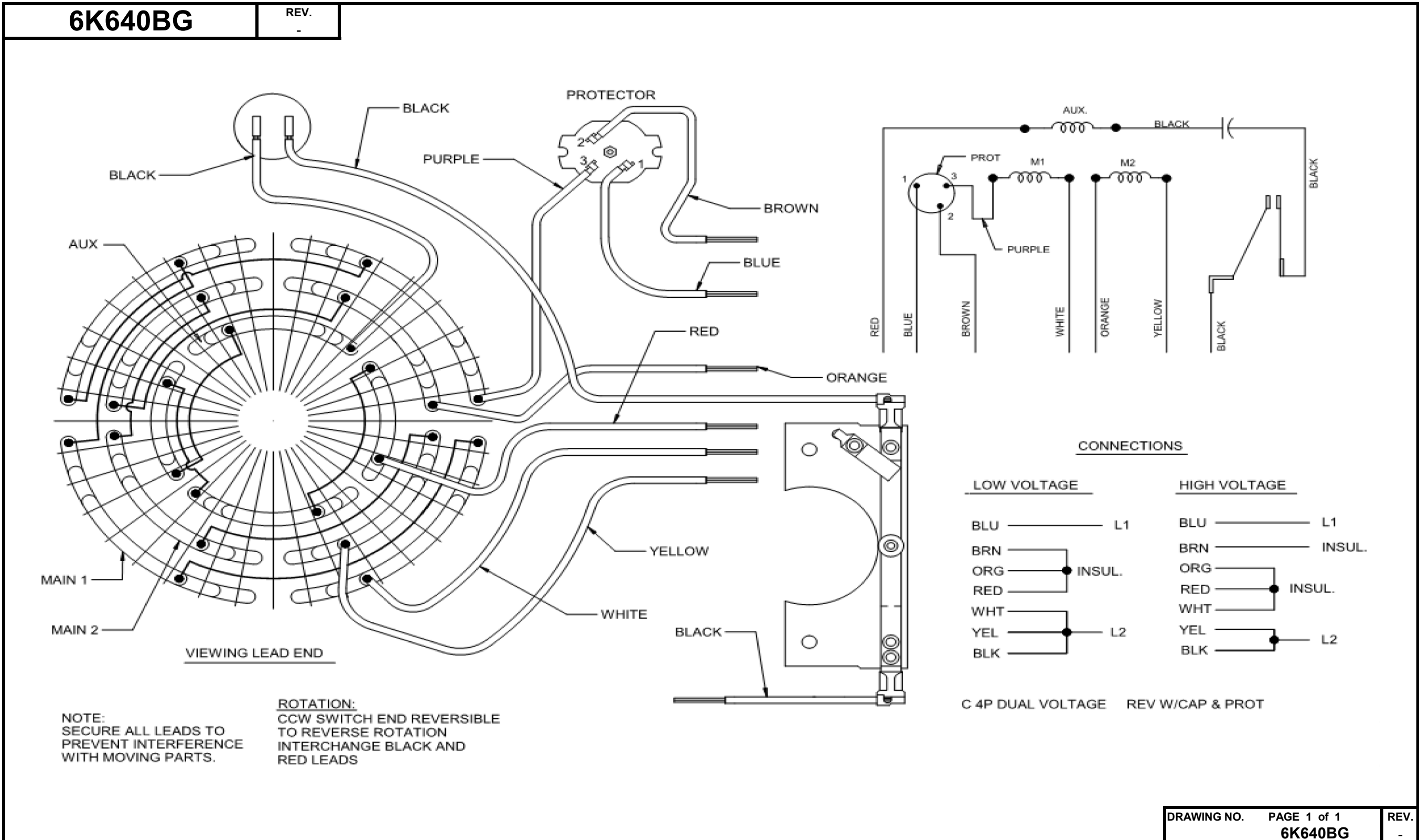
- SPEED vs WATTS
- SPEED vs TORQUE
- △ SPEED vs ILine

Motor Ratings:
(1) C063JBW1339 6K640BG

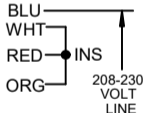
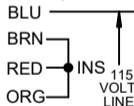
DRAWING NO. PAGE 8 of 8 REV.
6K640BG -

Dayton Electric Mfg. Co. Lake Forest, IL 60045 USA

Wiring Diagram



DRAWING NO.	PAGE 1 of 1	REV.
	6K640BG	-

Dayton[®]**INDUSTRIAL MOTOR****HP:** 1.0**VOLTS:** 115/208-230**AMPS:** 14.0/6.9-7.0**RPM:** 1725**DUTY:** CONT**SF:** 1.15**KVA CODE:** K**ENCL:** TEFC**THERMALLY PROTECTED:** MANUALMFG. NO. PROT. CODE: AVG. F.L.
EFF.**MTR REF:** C63BXJBW-1339**SF AT 208V IS 1.0**Part
No **6K640BG****PH:** 1**HZ:** 60**FR:** 56H**INS CL:** B**AMB:** 40 °C**SFA:** 14.61/6.9-7.3**Disconnect Power Before Making Any
Electrical Connections or Changes****CONNECTIONS**UNGROUND
SIDE OF LINE

E37403



258501

MOTOR IS CCW ROTATION LEAD END
TO REVERSE ROTATION INTERCHANGE
RED AND BLACK LEADS

Mfd for Dayton Electric Mfg. Co., Lake Forest, IL 60045 USA

Made in Mexico