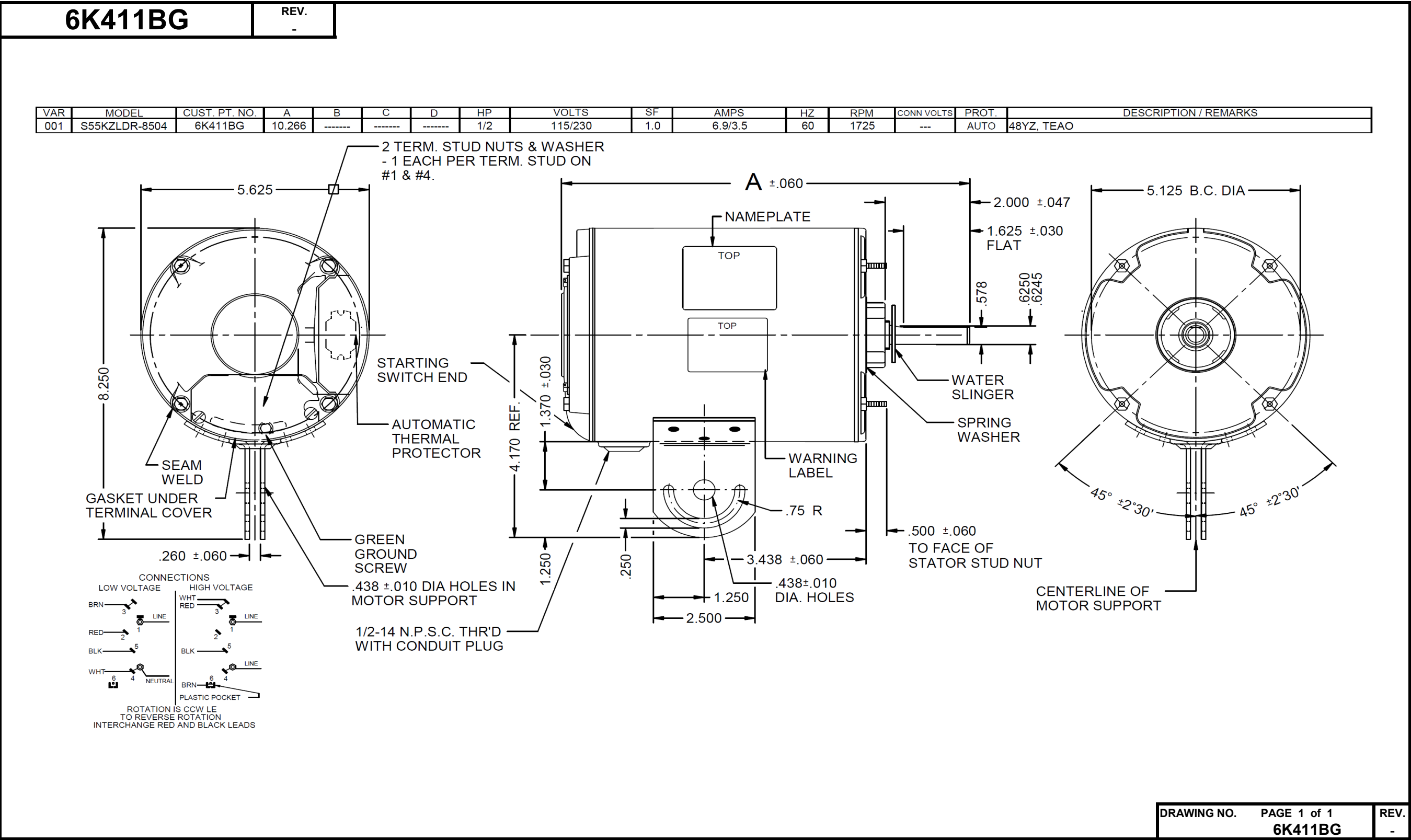


Dimensional Drawing



# Performance Data



**6K411BG**

REV.  
-

## SPLIT-PHASE & CAPACITOR START MOTOR PERFORMANCE

HP:	1/2							
Poles:	4							
Ambient (°C):	40							
Altitude (FASL):								
No. of Speeds:	1							
Volts:	115/230V	115	230					
HZ:	60	60	60					
Service Factor:	1							
Efficiency:	@ Rated Load	14.1	67.2					
Power Factor:	@ Rated Load	78.8	75.5					
Amps:	@ No Load							
	@ Rated Load	6.43	3.2					
	@ Service Factor	N/A	N/A					
	@ Locked Rotor					40.5		
RPM:	@ Rated Load					1726		
Torques:	Breakdown	45	45					
	Locked Rotor	33.6	30					
	Pull-Up	29.3	28					
	Rated Load	24.34	24.35					
	Service Factor	N/A	N/A					
Watts:	Rated Load	560	554					
KVA Code:								
Temperature Rise:	@ Rated Load	TEAO	TEAO					
	@ Service Factor	N/A	N/A					
Thermal Protector:	Trip Temp (°C)	N/A	N/A					
Winding Material:	Start (Auxiliary)	Cu	Cu					
	Run (Main)	Cu	Cu					
Capacitor(s):	Start (MFD / Volts)					N/A		
	No. of Start Capacitors							
	Run (MFD / Volts)					N/A		
	No. of Run Capacitors							

### LOW SPEED PERFORMANCE DATA:

HP:								
Poles:								
Volts:								
HZ:								
Efficiency:	@ Rated Load							
Power Factor:	@ Rated Load							
Amps:	@ No Load							
	@ Rated Load							
	@ Service Factor							
	@ Locked Rotor							
Torques:	BreakDown							
	Locked Rotor							
	Pull-Up							
	Rated Load							
	Service Factor							
Watts:	@ Rated Load							
Temperature Rise:	@ Rated Load							
	@ Service Factor							

DRAWING NO. PAGE 1 of 1  
6K411BG

REV.  
-

**Dayton Electric Mfg. Co. Lake Forest, IL 60045 USA**

# Performance Data



6K411BG		REV. -									
Dayton Manufacturing Company											
Motor Description					Test Conditions						
Model:		S055LDR8054 6K411BG			Test Type:		Start		Run Cap:		0
Motor ID:		1			Test Number:		3		Start Cap:		0µfd
Poles:		4			Poles:		4		Environment:		
Volts:		115/230			Volts:		115		Tested:		5/12/2008 3:47:30 PM
Frequency:		60&50			Hz:		60		Tested By:		TestBoard, MTC
HP:		1/2			Rotation:				Gear Ratio:		1:1
Speed:		1725			Special Cond:				Bearing Friction:		-0.60 Oz-Ft
Phase:		1			Speed Conn:				Windage Torque:		-2.36 Oz-Ft
Protector:		MEJ38AX			TestBoard:		Amps Performance		Fixture #3		
Special Points	Vline (V)	Iline (A)	Imain (A)	Iaux (A)	Watts	RPM	Tq (Oz-ft)	HP	Eff (%)	PF (%)	
	115.0	40.49	24.87	16.630	3480	2	33.57	0.001	0.0	74.7	
	115.0	40.40	24.88	16.552	3473	17	34.28	0.007	0.1	74.7	
	115.0	40.32	24.94	16.319	3460	127	30.86	0.047	1.0	74.6	
PUT OZ-FT	115.0	40.31	25.00	16.226	3460	170	29.32	0.059	1.3	74.7	
	115.0	40.24	25.05	16.005	3458	257	30.52	0.093	2.0	74.7	
	115.0	40.02	25.01	15.713	3449	380	32.29	0.146	3.2	74.9	
	115.0	39.77	24.95	15.420	3444	494	34.39	0.202	4.4	75.3	
	115.0	39.46	24.87	15.064	3426	599	36.83	0.263	5.7	75.5	
	115.0	39.13	24.76	14.740	3414	694	38.67	0.320	7.0	75.9	
	115.0	38.75	24.60	14.411	3392	784	40.91	0.382	8.4	76.1	
	115.0	38.32	24.41	14.087	3371	867	42.97	0.444	9.8	76.5	
	115.0	37.84	24.18	13.752	3342	943	44.57	0.501	11.2	76.8	
	115.0	37.32	23.93	13.428	3310	1015	46.13	0.557	12.6	77.1	
	115.0	36.75	23.63	13.103	3279	1081	47.51	0.612	13.9	77.6	
	115.0	36.14	23.31	12.788	3236	1144	48.70	0.663	15.3	77.9	
	115.0	35.51	22.96	12.499	3194	1201	49.36	0.706	16.5	78.2	
	115.0	34.88	22.61	12.240	3145	1255	49.63	0.741	17.6	78.4	
	115.0	34.19	22.21	12.025	3095	1305	49.25	0.765	18.4	78.7	
	115.0	33.50	21.77	11.854	3040	1351	48.78	0.784	19.2	78.9	
	115.0	32.79	21.32	11.730	2984	1393	47.67	0.791	19.8	79.1	
	115.0	32.10	20.85	11.660	2926	1433	46.11	0.786	20.0	79.3	
	115.0	31.38	20.35	11.636	2863	1469	43.82	0.766	20.0	79.3	
	115.0	30.68	19.84	11.662	2801	1502	41.27	0.738	19.7	79.4	
	115.0	29.96	19.31	11.736	2736	1534	38.44	0.702	19.1	79.4	
	115.0	29.29	18.80	11.849	2673	1563	35.22	0.655	18.3	79.3	
	115.0	28.63	18.27	12.012	2607	1589	31.08	0.588	16.8	79.2	
28 OZ-FT	115.0	28.09	17.83	12.171	2553	1610	28.00	0.537	15.7	79.0	
	115.0	28.00	17.76	12.201	2543	1613	27.25	0.523	15.4	79.0	
0.5 HP	115.0	27.78	17.59	12.264	2520	1621	25.91	0.500	14.8	78.9	
24.3 OZ-FT	115.0	27.58	17.41	12.350	2499	1629	24.30	0.471	14.1	78.8	
	115.0	27.36	17.22	12.432	2478	1637	22.75	0.443	13.3	78.7	
	115.0	26.76	16.68	12.680	2409	1658	18.22	0.360	11.1	78.3	
	115.0	26.23	16.18	12.946	2351	1677	13.99	0.279	8.9	77.9	
	115.0	25.67	15.66	13.214	2289	1697	8.91	0.180	5.9	77.5	
	115.0	25.08	15.08	13.546	2218	1716	3.23	0.066	2.2	76.9	
1725 RPM	115.0	24.83	14.83	13.692	2187	1725	0.48	0.010	0.3	76.6	
	115.0	24.71	14.67	13.800	2170	1730	0.00	0.000	0.0	76.4	

DRAWING NO.

PAGE 1 of 6

6K411BG

REV.  
-

DRAWING NO.	PAGE 1 of 6	REV.
	6K411BG	-

Dayton Electric Mfg. Co. Lake Forest, IL 60045 USA

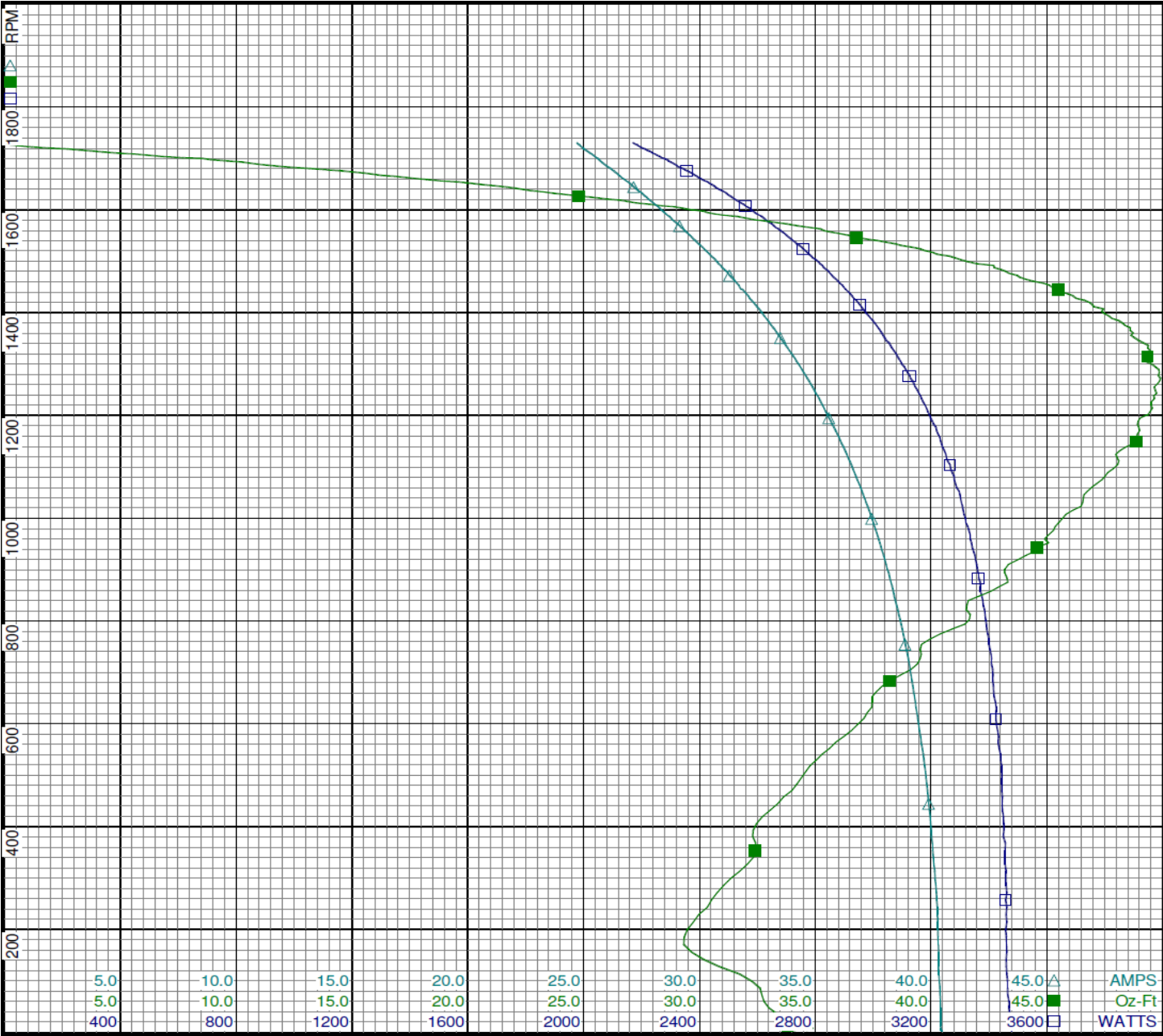
Performance Data



6K411BG

REV.

-



Curve Descriptions:  
Motor(1) Test 3 Start 115V 60 Hz 4P  
□ SPEED vs WATTS  
■ SPEED vs TORQUE  
△ SPEED vs ILine

Motor Ratings:  
S055LDR8054 6K411BG



# Performance Data



6K411BG		REV. -							
Dayton Manufacturing Company									
Motor Description				Test Conditions					
Model:		S055LDR8054 6K411BG		Test Type:		Run		Run Cap: 0	
Motor ID:		1		Test Number:		4		Start Cap: 0µfd	
Poles:		4		Poles:		4		Environment:	
Volts:		115/230		Volts:		115		Tested: 5/12/2008 4:05:55 PM	
Frequency:		60&50		Hz:		60		Tested By: TestBoard, MTC	
HP:		1/2		Rotation:				Gear Ratio: 1:1	
Speed:		1725		Special Cond:				Bearing Friction: -0.60 Oz-Ft	
Phase:		1		Speed Conn:				Windage Torque: -2.12 Oz-Ft	
Protector:		MEJ38AX		TestBoard:		Amps Performance		Fixture #3	
Special Points	Vline(V)	Iline(A)	Watts	RPM	Tq(Oz-ft)	HP	Eff(%)	PF(%)	
	115.0	3.57	93.3	1791	0.00	0.000	0.0	22.7	
	115.0	4.08	238.3	1772	8.30	0.175	54.8	50.8	
	115.0	4.96	379.5	1752	15.76	0.329	64.6	66.5	
	115.0	6.10	523.3	1732	22.52	0.464	66.2	74.6	
24.3 OZ-FT	115.0	6.42	559.2	1726	24.30	0.499	66.6	75.7	
0.5 HP	115.0	6.43	560.0	1726	24.34	0.500	66.6	75.7	
1725 RPM	115.0	6.47	565.0	1725	24.54	0.504	66.5	75.9	
28 OZ-FT	115.0	7.22	646.8	1711	28.00	0.570	65.8	78.0	
	115.0	7.23	648.9	1711	28.11	0.572	65.8	78.0	
	115.0	8.35	767.0	1689	32.87	0.661	64.3	79.9	
	115.0	9.44	875.3	1666	36.48	0.723	61.6	80.6	
	115.0	10.55	981.3	1641	39.73	0.776	59.0	80.8	
	115.0	11.72	1083.9	1614	41.84	0.804	55.3	80.4	
	115.0	12.82	1173.9	1584	43.60	0.822	52.3	79.6	
	115.0	13.87	1257.2	1553	44.70	0.827	49.0	78.8	
	115.0	14.92	1332.5	1519	44.41	0.803	45.0	77.6	
BDT OZ-FT	115.0	15.32	1359.2	1504	44.77	0.801	44.0	77.2	
	115.0	15.91	1398.5	1481	43.98	0.775	41.4	76.4	
	115.0	16.87	1457.6	1440	42.85	0.734	37.6	75.1	
	115.0	17.78	1506.2	1396	41.26	0.686	34.0	73.7	
	115.0	18.62	1547.9	1348	39.25	0.630	30.4	72.3	
	115.0	19.41	1582.9	1296	36.87	0.569	26.8	70.9	
	115.0	20.14	1610.7	1241	34.01	0.502	23.3	69.6	
	115.0	20.82	1631.9	1179	31.09	0.436	19.9	68.2	
	115.0	21.43	1647.0	1113	28.00	0.371	16.8	66.8	
	115.0	22.00	1658.8	1042	24.69	0.306	13.8	65.6	
	115.0	22.50	1666.5	965	21.08	0.242	10.8	64.4	
	115.0	22.94	1670.7	883	18.10	0.190	8.5	63.3	
	115.0	23.34	1672.5	794	14.27	0.135	6.0	62.3	
	115.0	23.69	1670.6	700	11.17	0.093	4.2	61.3	
	115.0	23.97	1668.6	599	8.28	0.059	2.6	60.5	
	115.0	24.18	1668.3	491	5.60	0.033	1.5	60.0	
	115.0	24.36	1661.3	373	2.66	0.012	0.5	59.3	
	115.0	24.45	1657.6	251	0.82	0.002	0.1	59.0	
	115.0	24.49	1658.0	120	-0.38	-0.001	0.0	58.9	

DRAWING NO.

PAGE 3 of 6

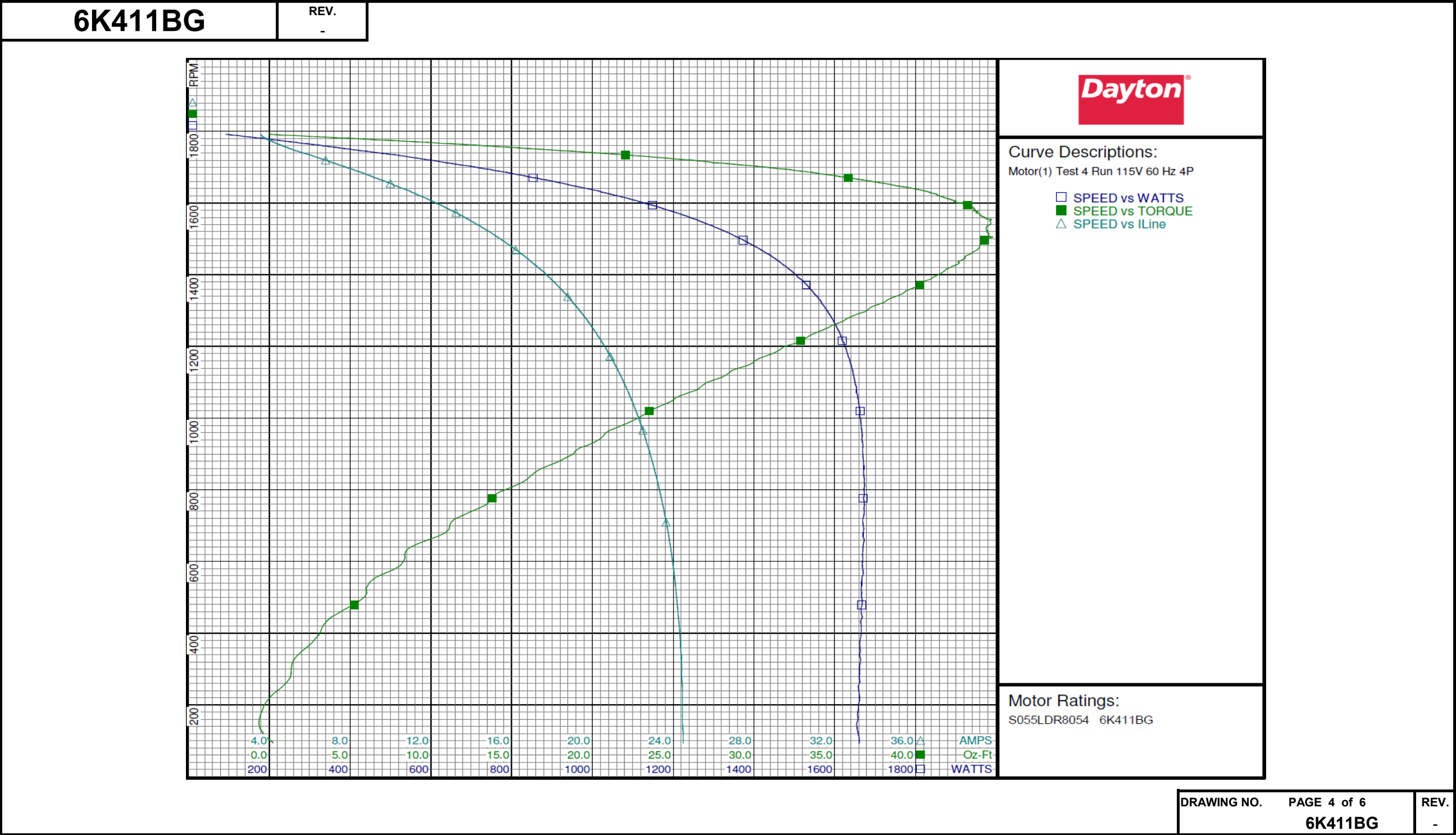
REV.

6K411BG

-

Dayton Electric Mfg. Co. Lake Forest, IL 60045 USA

Performance Data



# Performance Data



6K411BG		REV. -						
Dayton Manufacturing Company								
Motor Description				Test Conditions				
Model:	S055LDR8054 6K411BG			Test Type:	Run	Run Cap:	0	
Motor ID:	1			Test Number:	7	Start Cap:	0µfd	
Poles:	4			Poles:	4	Environment:		
Volts:	115/230			Volts:	230	Tested:	5/12/2008 1:47:53 PM	
Frequency:	60&50			Hz:	60	Tested By:	TestBoard, MTC	
HP:	1/2			Rotation:		Gear Ratio:	1:1	
Speed:	1725			Special Cond:		Bearing Friction:	-0.59 Oz-Ft	
Phase:	1			Speed Conn:		Windage Torque:	-2.23 Oz-Ft	
Protector:	MEJ38AX			TestBoard:	Amps Performance	Fixture #3		
Special Points	Vline(V)	Iline(A)	Watts	RPM	Tq(Oz-ft)	HP	Eff (%)	PF (%)
	230.0	1.767	87.2	1791	0.00	0.000	0.0	21.5
	230.0	2.027	231.9	1772	7.96	0.168	54.0	49.7
	230.0	2.485	375.5	1752	15.56	0.325	64.5	65.7
	230.0	2.995	508.2	1732	22.03	0.454	66.7	73.8
24.3 OZ-FT	230.0	3.190	553.7	1725	24.30	0.499	67.2	75.5
0.5 HP	230.0	3.193	554.5	1725	24.35	0.500	67.3	75.5
1725 RPM	230.0	3.186	553.0	1725	24.25	0.498	67.2	75.5
	230.0	3.574	636.9	1711	27.79	0.566	66.3	77.5
28 OZ-FT	230.0	3.601	642.7	1710	28.00	0.570	66.2	77.6
	230.0	4.139	758.5	1689	32.55	0.654	64.4	79.7
	230.0	4.701	869.0	1666	36.49	0.723	62.1	80.4
	230.0	5.257	971.8	1641	39.53	0.772	59.3	80.4
	230.0	5.822	1072.6	1614	42.06	0.808	56.2	80.1
	230.0	6.399	1168.5	1584	43.70	0.824	52.6	79.4
	230.0	6.922	1250.2	1553	44.64	0.825	49.2	78.5
BDT OZ-FT	230.0	7.408	1319.5	1522	45.04	0.816	46.1	77.4
	230.0	7.459	1326.8	1518	44.96	0.813	45.7	77.3
	230.0	7.956	1393.6	1481	44.56	0.786	42.1	76.2
	230.0	8.445	1452.6	1440	43.38	0.744	38.2	74.8
	230.0	8.902	1502.8	1396	41.70	0.693	34.4	73.4
	230.0	9.327	1543.3	1348	39.78	0.639	30.9	71.9
	230.0	9.735	1578.8	1296	37.32	0.576	27.2	70.5
	230.0	10.109	1607.3	1240	34.59	0.511	23.7	69.1
	230.0	10.451	1627.4	1179	31.62	0.444	20.4	67.7
	230.0	10.765	1645.2	1113	28.42	0.376	17.1	66.4
	230.0	11.049	1654.8	1042	25.14	0.312	14.1	65.1
	230.0	11.299	1659.9	966	21.47	0.247	11.1	63.9
	230.0	11.522	1665.6	882	18.31	0.192	8.6	62.9
	230.0	11.726	1666.9	794	14.59	0.138	6.2	61.8
	230.0	11.903	1665.5	699	11.56	0.096	4.3	60.8
	230.0	12.043	1662.7	598	8.76	0.062	2.8	60.0
	230.0	12.148	1658.4	490	5.51	0.032	1.4	59.4
	230.0	12.232	1654.7	374	2.66	0.012	0.5	58.8
	230.0	12.273	1652.0	251	0.52	0.002	0.1	58.5
	230.0	12.282	1647.2	120	0.41	0.001	0.0	58.3

DRAWING NO.

PAGE 5 of 6

6K411BG

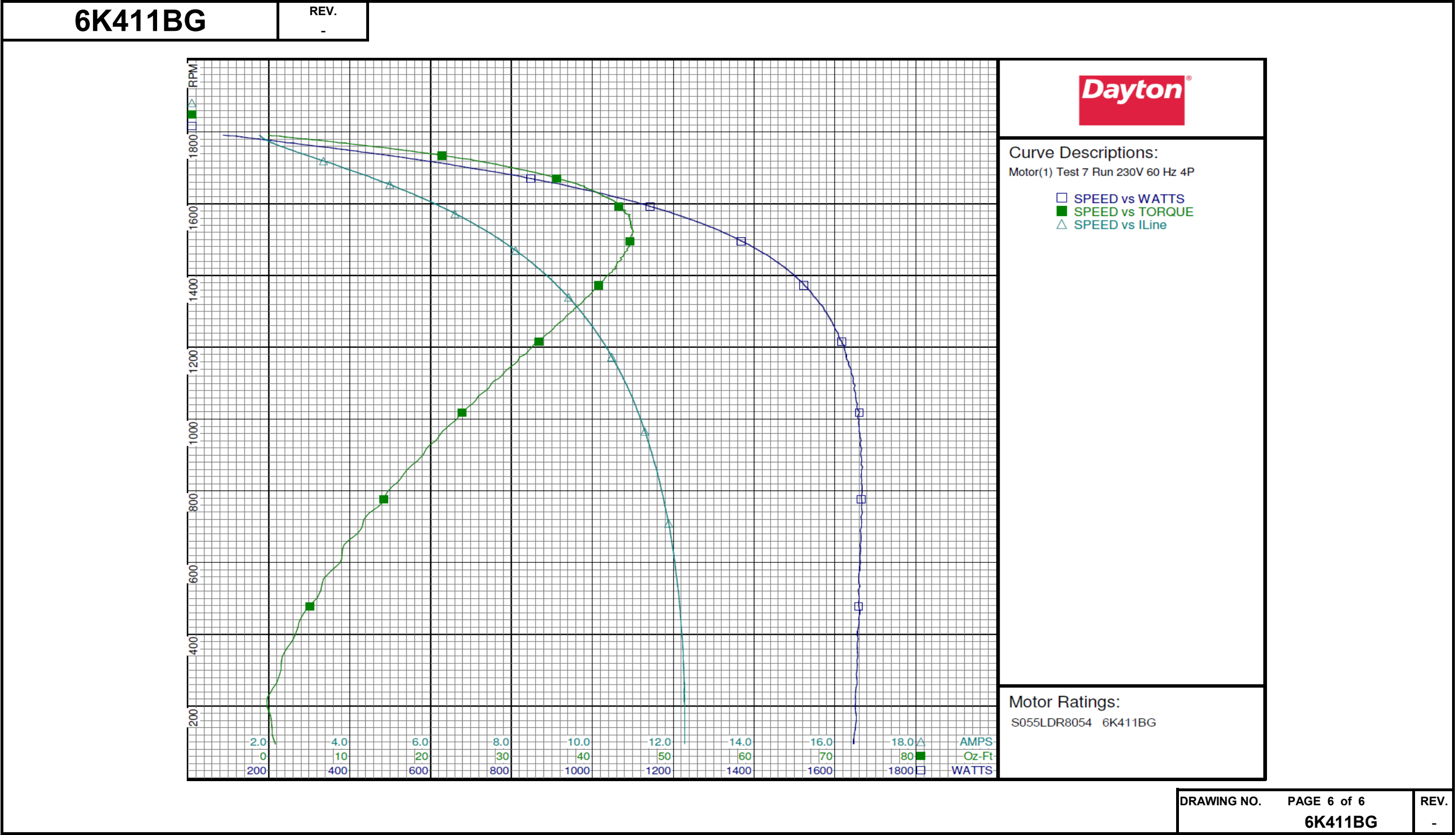
REV.

-

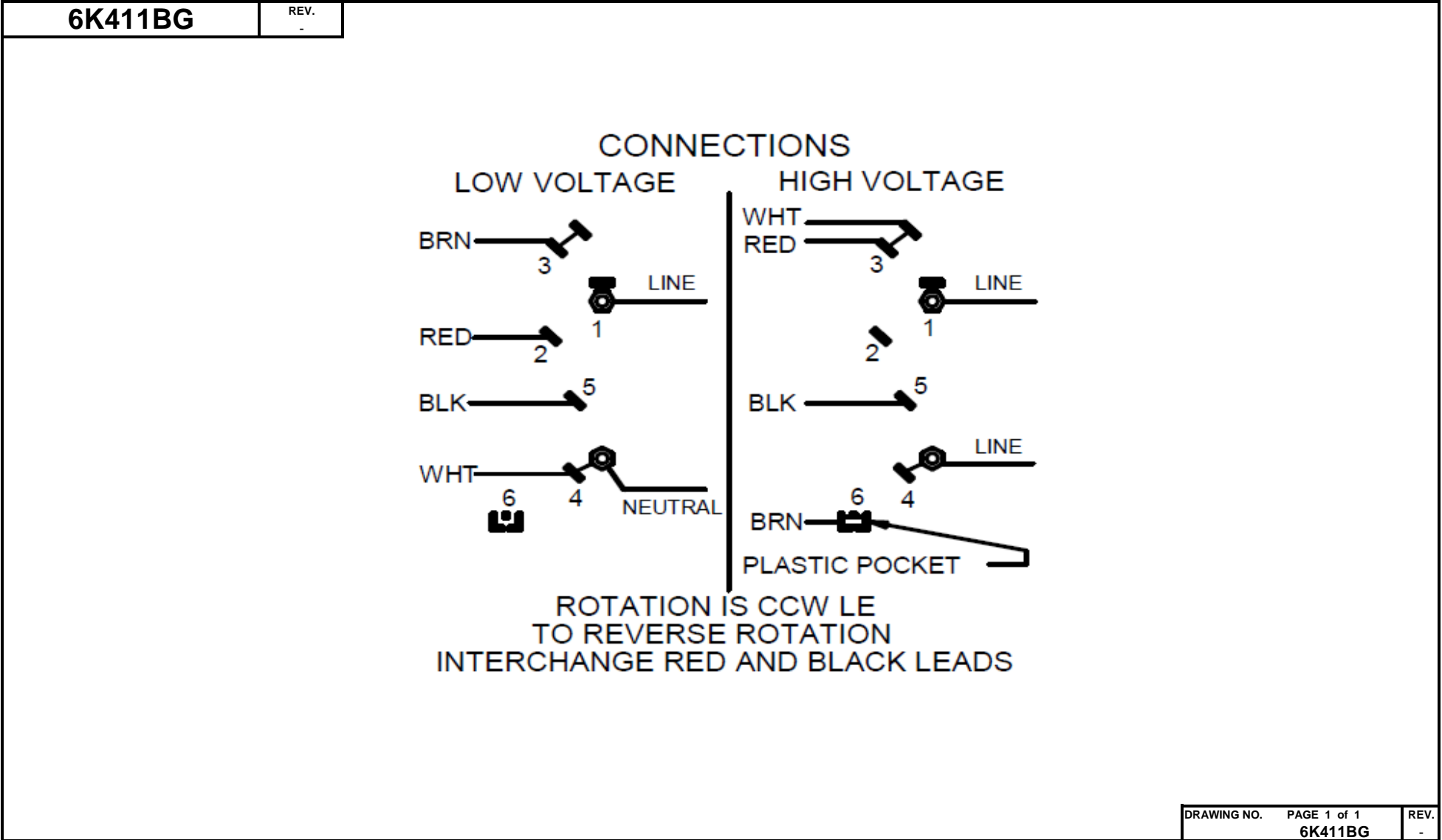
DRAWING NO.	PAGE 5 of 6	REV.
	6K411BG	-

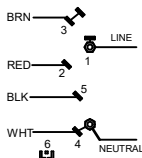
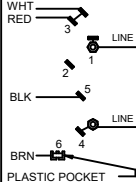
Dayton Electric Mfg. Co. Lake Forest, IL 60045 USA

Performance Data







**Dayton**<sup>®</sup>**PEDESTAL FAN MOTOR****HP:** 1/2**VOLTS:** 115/230**AMPS:** 6.9/3.5**RPM:** 1725**DUTY:** CONT**SF:** 1.0**KVA CODE:** L**ENCL:** TEAO**THERMALLY PROTECTED:** AUTOMFG. NO. PROT. CODE:  04490 **MTR REF:** S55KZLDR-8504**PH:** 1**HZ:** 60**FR:** 48YZ**INS CL:** B**AMB:** 40 °C**SFA:** 6.9/3.5AVG. F.L.  
EFF.Part  
No **6K411BG****Disconnect Power Before Making Any  
Electrical Connections or Changes****CONNECTIONS****LOW VOLTAGE****HIGH VOLTAGE****ROTATION IS CCW LE  
TO REVERSE ROTATION  
INTERCHANGE RED AND BLACK LEADS****Mfd for Dayton Electric Mfg. Co., Lake Forest, IL 60045 USA****Made in Mexico**