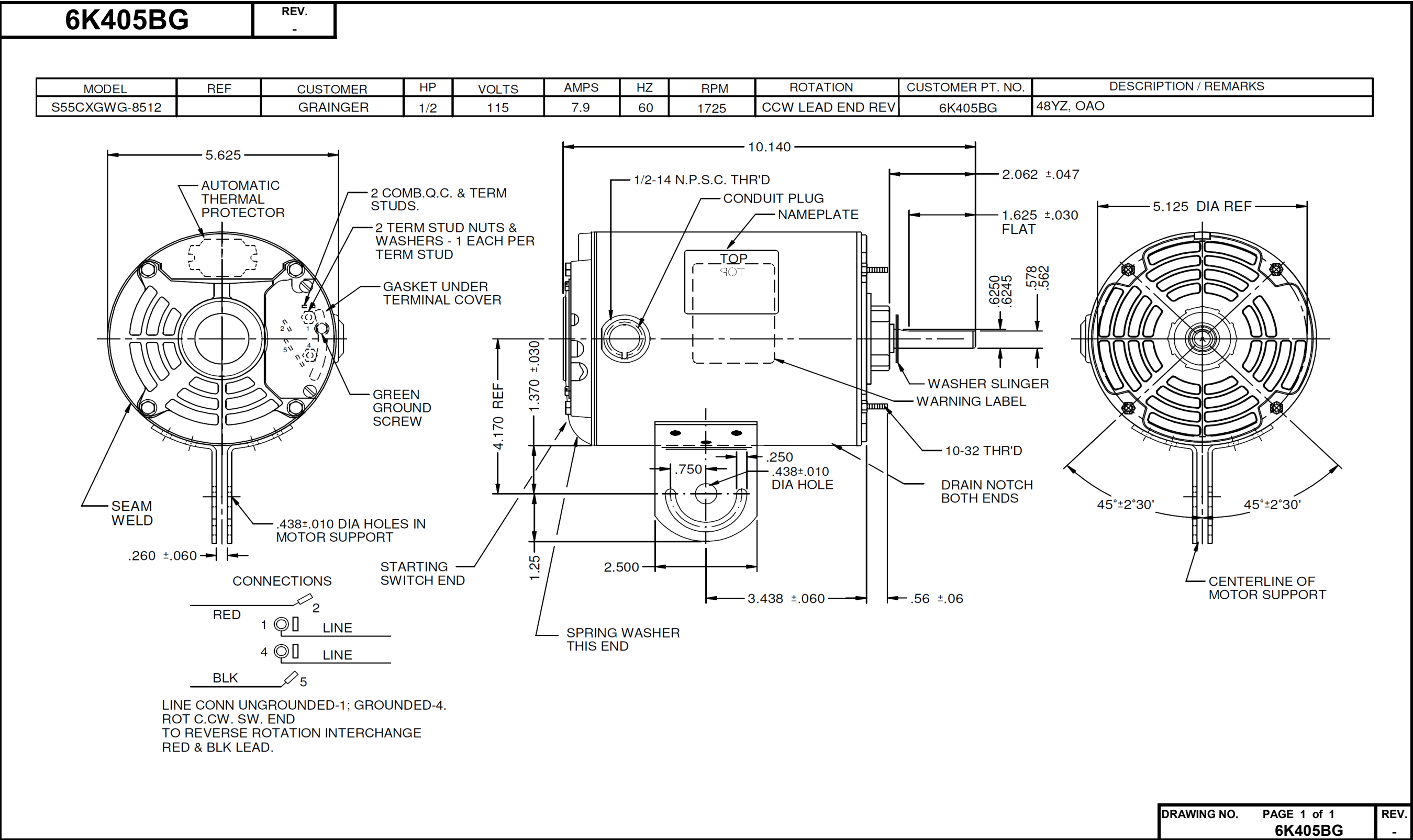


Dimensional Drawing



DRAWING NO.

PAGE 1 of 1

REV.

6K405BG

-

Performance Data



6K405BG

REV.
-

SPLIT-PHASE & CAPACITOR START MOTOR PERFORMANCE

HP:	1/2						
Poles:	4						
Ambient (°C):	40						
Altitude (FASL):							
No. of Speeds:	1						
Volts:	115	115					
HZ:	60	60					
Service Factor:	1						
Efficiency:	@ Rated Load	67.8					
Power Factor:	@ Rated Load	70.4					
Amps:	@ No Load						
	@ Rated Load	6.8					
	@ Service Factor						
	@ Locked Rotor				38.6		
RPM:	@ Rated Load				1731		
Torques:	Breakdown	53.5					
	Locked Rotor	30.9					
	Pull-Up	28.2					
	Rated Load	24.3					
	Service Factor						
Watts:	Rated Load	550					
KVA Code:	K	K					
Temperature Rise:	@ Rated Load	OAD					
	@ Service Factor						
Thermal Protector:	Trip Temp (°C)						
Winding Material:	Start (Auxiliary)	Al					
	Run (Main)	Cu					
Capacitor(s):	Start (MFD / Volts)				N/A		
	No. of Start Capacitors						
	Run (MFD / Volts)				N/A		
	No. of Run Capacitors						

LOW SPEED PERFORMANCE DATA:

HP:							
Poles:							
Volts:							
HZ:							
Efficiency:	@ Rated Load						
Power Factor:	@ Rated Load						
Amps:	@ No Load						
	@ Rated Load						
	@ Service Factor						
	@ Locked Rotor						
Torques:	BreakDown						
	Locked Rotor						
	Pull-Up						
	Rated Load						
	Service Factor						
Watts:	@ Rated Load						
Temperature Rise:	@ Rated Load						
	@ Service Factor						

DRAWING NO. PAGE 1 of 1
6K405BG

REV.
-

Dayton Electric Mfg. Co. Lake Forest, IL 60045 USA

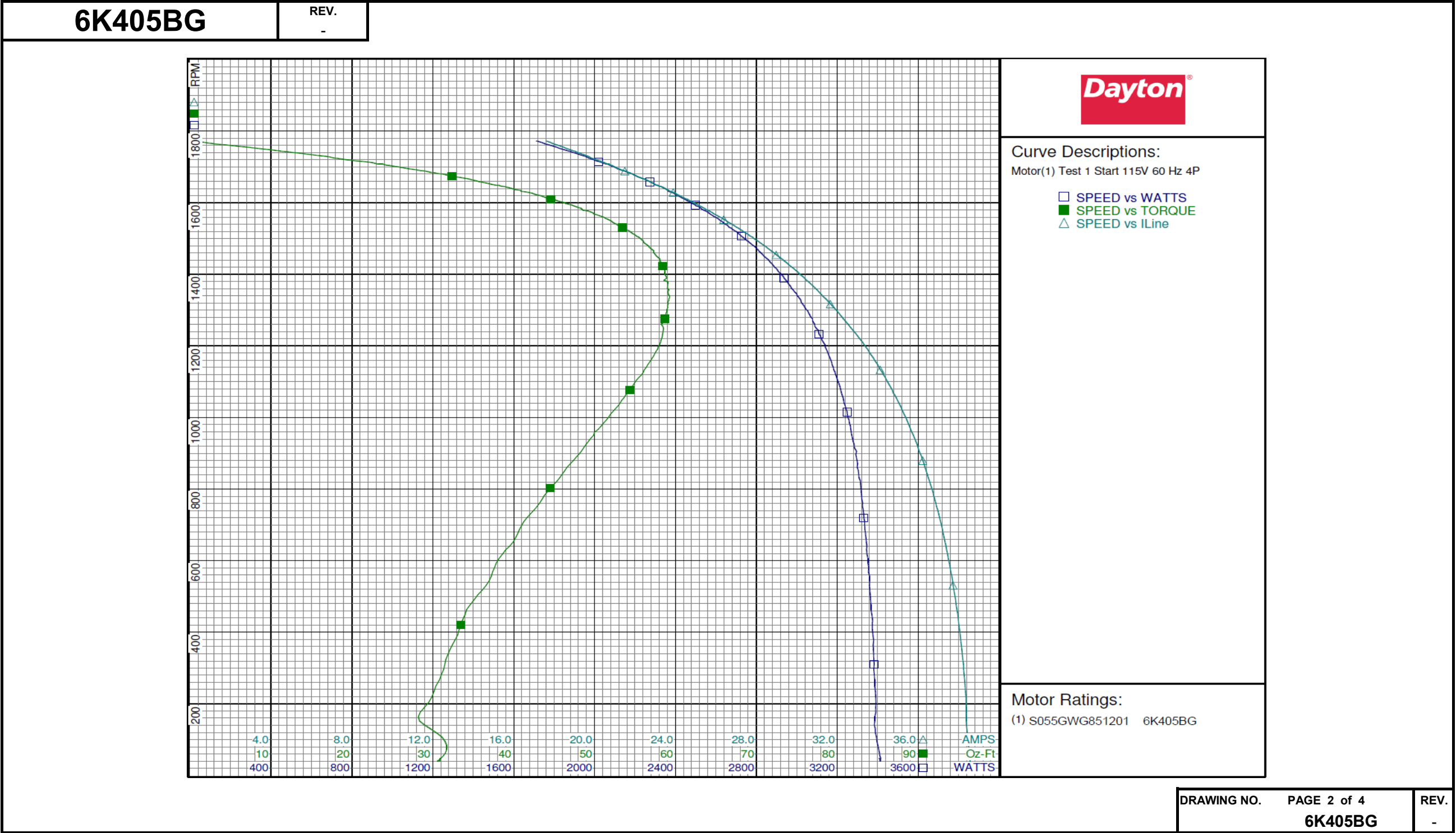
Performance Data



6K405BG		REV. -									
Dayton Manufacturing Company											
Motor Description					Test Conditions						
Model:		S055GWG851201 6K405BG		Test Type:		Start		Run Cap:		0	
Motor ID:				Test Number:		1		Start Cap:		0ufd	
Poles:		4		Poles:		4		Environment:			
Volts:		115		Volts:		115		Tested:		12/16/2010 9:12:20 AM	
Frequency:		60		Hz:		60		Tested By:		Sharp, Gerald	
HP:		1/2		Rotation:				Gear Ratio:		1:1	
Speed:		1725		Special Cond:				Bearing Friction:		-0.41 Oz-Ft	
Phase:		1		Speed Conn:				Windage Torque:		-1.31 Oz-Ft	
Protector:		MEJ20BY		TestBoard:		Amps Performance		Fixture #4			
Special Points		Vline(V)	Iline(A)	Imain(A)	Iaux(A)	Watts	RPM	Tq(Oz-ft)	HP	Eff(%)	PF(%)
		115.0	38.59	29.11	10.835	3408	46	30.86	0.017	0.4	76.8
		115.0	38.54	29.12	10.723	3410	54	31.30	0.020	0.4	76.9
PUT OZ-FT		115.0	38.37	29.07	10.537	3386	164	28.21	0.055	1.2	76.7
		115.0	38.37	29.08	10.515	3390	176	28.44	0.060	1.3	76.8
		115.0	38.18	28.96	10.260	3380	338	31.87	0.128	2.8	77.0
		115.0	37.84	28.72	9.993	3364	491	35.13	0.205	4.6	77.3
		115.0	37.40	28.37	9.716	3345	630	39.00	0.292	6.5	77.8
		115.0	36.91	27.96	9.476	3324	751	42.89	0.384	8.6	78.3
		115.0	36.33	27.47	9.245	3298	861	46.60	0.478	10.8	78.9
		115.0	35.69	26.89	9.030	3269	958	49.96	0.570	13.0	79.6
		115.0	34.98	26.26	8.838	3231	1047	53.32	0.665	15.3	80.3
		115.0	34.21	25.58	8.657	3188	1127	56.03	0.751	17.6	81.0
		115.0	33.40	24.86	8.509	3140	1197	57.84	0.824	19.6	81.7
		115.0	32.53	24.03	8.420	3087	1260	58.22	0.874	21.1	82.5
		115.0	31.66	23.23	8.345	3028	1317	59.10	0.926	22.8	83.2
		115.0	30.90	22.51	8.314	2972	1361	58.98	0.956	24.0	83.6
		115.0	29.86	21.53	8.313	2900	1415	58.63	0.988	25.4	84.4
		115.0	28.90	20.62	8.338	2823	1458	57.36	0.996	26.3	85.0
		115.0	28.01	19.78	8.394	2751	1494	55.91	0.994	27.0	85.4
		115.0	27.12	18.91	8.476	2676	1528	53.78	0.978	27.3	85.8
		115.0	26.23	18.06	8.578	2599	1559	51.17	0.950	27.3	86.2
		115.0	25.35	17.21	8.703	2520	1586	47.96	0.906	26.8	86.4
		115.0	24.53	16.40	8.836	2443	1610	44.61	0.855	26.1	86.6
		115.0	23.65	15.53	8.990	2364	1635	40.82	0.794	25.1	86.9
		115.0	22.84	14.73	9.145	2286	1655	36.46	0.719	23.4	87.0
		115.0	22.01	13.89	9.317	2201	1676	32.00	0.638	21.6	87.0
		115.0	21.19	13.03	9.500	2114	1694	27.00	0.545	19.2	86.8
		115.0	20.39	12.19	9.695	2028	1713	21.92	0.447	16.4	86.5
		115.0	19.60	11.36	9.896	1944	1731	16.07	0.331	12.7	86.2
		115.0	18.80	10.44	10.117	1850	1748	9.96	0.207	8.4	85.6
		115.0	17.92	9.46	10.367	1750	1766	2.56	0.054	2.3	84.9
		115.0	17.59	9.10	10.463	1711	1772	0.00	0.000	0.0	84.6
DRAWING NO.									PAGE 1 of 4		REV.
									6K405BG		-

Dayton Electric Mfg. Co. Lake Forest, IL 60045 USA

Performance Data



Performance Data



6K405BG

REV.
-

Dayton Manufacturing Company

Motor Description				Test Conditions				
Model:	S055GWG851201 6K405BG			Test Type:	Run	Run Cap:	0	
Motor ID:				Test Number:	2	Start Cap:	0µfd	
Poles:	4			Poles:	4	Environment:		
Volts:	115			Volts:	115	Tested:	12/16/2010 9:11:25 AM	
Frequency:	60			Hz:	60	Tested By:	Sharp, Gerald	
HP:	1/2			Rotation:		Gear Ratio:	1:1	
Speed:	1725			Special Cond:		Bearing Friction:	-0.30 Oz-Ft	
Phase:	1			Speed Conn:		Windage Torque:	-1.14 Oz-Ft	
Protector:	MEJ20BY			TestBoard:	Amps Performance	Fixture #4		

Special Points	Vline(V)	Iline(A)	Watts	RPM	Tq(Oz-ft)	HP	Eff(%)	PF(%)
	115.0	4.57	99	1791	0.00	0.000	0.0	18.7
	115.0	4.73	186	1779	4.97	0.105	42.2	34.2
	115.0	5.12	284	1767	10.53	0.221	58.2	48.2
	115.0	5.76	398	1750	16.62	0.346	65.0	60.0
	115.0	6.61	523	1734	22.98	0.474	67.7	68.8
24.3 OZ-FT	115.0	6.81	551	1731	24.30	0.501	67.8	70.4
0.5 HP	115.0	6.80	550	1731	24.27	0.500	67.8	70.4
	115.0	7.64	658	1716	29.14	0.596	67.5	74.8
0.625 HP	115.0	7.94	693	1711	30.69	0.625	67.3	75.9
	115.0	8.85	799	1693	35.09	0.707	66.0	78.5
	115.0	10.31	959	1667	41.04	0.814	63.4	80.9
	115.0	12.14	1148	1630	46.96	0.912	59.2	82.3
	115.0	13.46	1272	1604	49.64	0.948	55.6	82.2
	115.0	15.25	1434	1561	52.34	0.973	50.6	81.8
	115.0	17.13	1591	1511	53.40	0.960	45.0	80.7
BDT OZ-FT	115.0	17.47	1618	1500	53.47	0.955	44.0	80.5
	115.0	18.81	1720	1456	52.70	0.914	39.6	79.5
	115.0	20.27	1820	1401	50.96	0.850	34.8	78.1
	115.0	21.54	1901	1344	48.50	0.776	30.4	76.7
	115.0	22.67	1964	1284	45.92	0.702	26.7	75.3
	115.0	23.68	2016	1222	43.01	0.626	23.2	74.0
	115.0	24.61	2053	1153	39.16	0.537	19.5	72.5
	115.0	25.43	2085	1080	35.03	0.451	16.1	71.3
	115.0	26.13	2111	1005	30.71	0.367	13.0	70.3
	115.0	26.75	2130	925	26.46	0.291	10.2	69.2
	115.0	27.30	2145	842	22.32	0.224	7.8	68.3
	115.0	27.78	2156	752	18.03	0.161	5.6	67.5
	115.0	28.19	2160	656	13.77	0.107	3.7	66.6
	115.0	28.51	2166	555	10.60	0.070	2.4	66.1
	115.0	28.76	2166	449	7.13	0.038	1.3	65.5
	115.0	28.95	2167	334	3.41	0.014	0.5	65.1
	115.0	29.04	2167	213	1.92	0.005	0.2	64.9
	115.0	29.09	2170	92	1.81	0.002	0.1	64.9

DRAWING NO.

PAGE 3 of 4

6K405BG

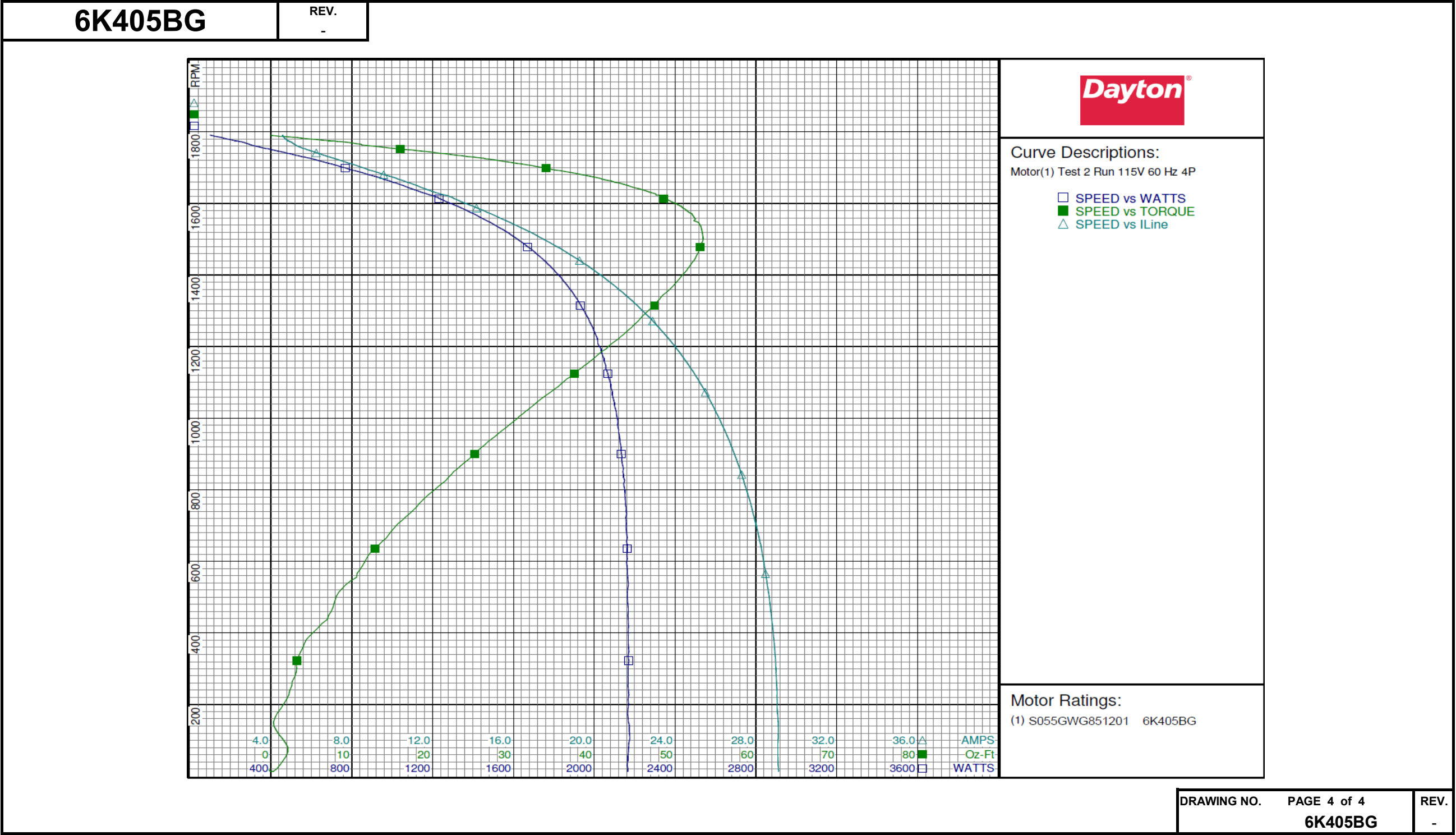
REV.

-

DRAWING NO.	PAGE 3 of 4	REV.
	6K405BG	-

Dayton Electric Mfg. Co. Lake Forest, IL 60045 USA

Performance Data

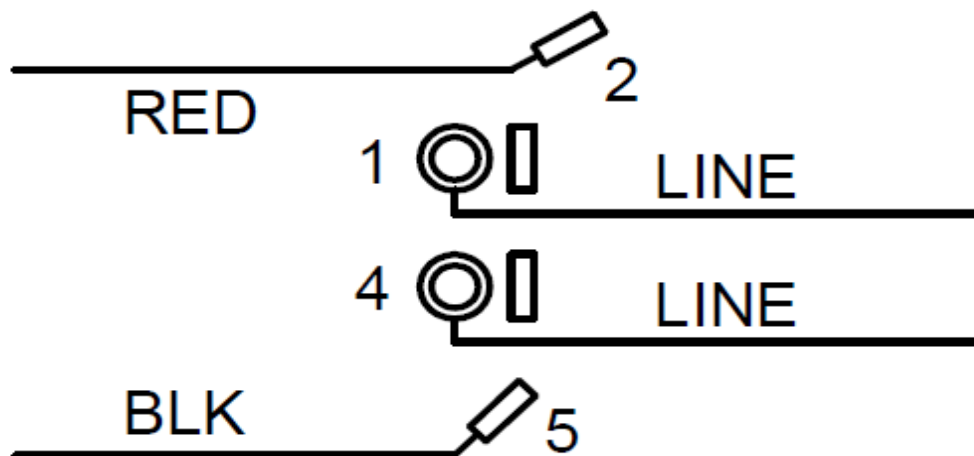


6k405BG

REV.

-

CONNECTIONS



LINE CONN UNGROUNDED-1; GROUNDED-4.
 ROT C.CW. SW. END
 TO REVERSE ROTATION INTERCHANGE
 RED & BLK LEAD.

DRAWING NO.	PAGE 1 of 1	REV.
6k405BG		-

Dayton[®]

PEDESTAL FAN MOTOR

HP: 1/2**VOLTS:** 115**AMPS:** 7.9**RPM:** 1725**DUTY:** CONT**SF:** 1.0**KVA CODE:** K**ENCL:** OAO**THERMALLY PROTECTED:** AUTO**MFG. NO.** ☐ ☐ **PROT. CODE** ☐ 00F50 **AVG. F.L.
EFF.****MTR REF:** S55CXGWG-8512**PH:** 1**HZ:** 60**FR:** 48YZ**INS CL:** B**AMB:** 40 °C**SFA:** 7.9

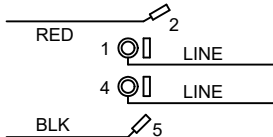
E37403



258501

US PAT 7709992**Part
No** 6K405BG**Disconnect Power Before Making Any Electrical
Connections or Changes**

CONNECTIONS



LINE CONN UNGROUNDED-1; GROUNDED-4.
ROT C.C.W. SW. END
TO REVERSE ROTATION INTERCHANGE
RED & BLK LEAD.

Mfd for Dayton Electric Mfg. Co., Lake Forest, IL 60045 USA

Made in Mexico