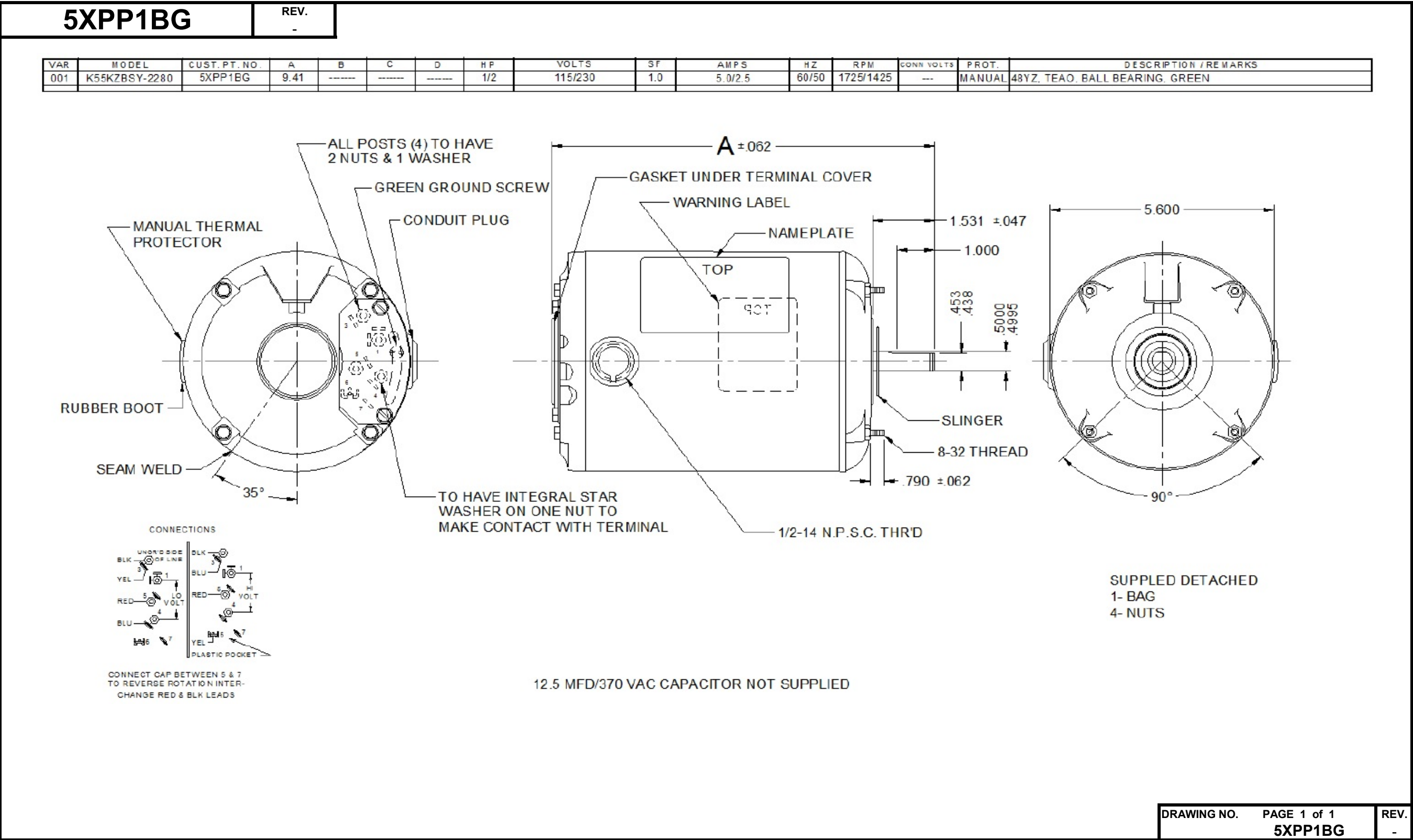


Dimensional Drawing



DRAWING NO.

PAGE 1 of 1

REV.

5XPP1BG

-

Performance Data



5XPP1BG

REV.
-

SHADED-POLE & PSC MOTOR PERFORMANCE

HP:	1/2							
Poles:	4							
Ambient (°C):	40							
Altitude (FASL):								
No. of Speeds:	1							
HIGH SPEED								
Volts:	115/230	115 / 60	115 / 50	230 / 60	230 / 50			
HZ:	60/50	60	50	60	50			
Service Factor:	1							
Efficiency:	@ Rated Load	75.0	73.6	73.9	71.0			
Power Factor:	@ Rated Load	88.9	78.1	88.9	78.4			
Amps:	@ No Load							
	@ Rated Load	4.9	5.7	2.5	2.9			
	@ Locked Rotor	22.2	24.3	11.6	12.6			
RPM:	@ Rated Load	1724	1431	1728	1432			
Torques:	Breakdown	52.5	66	53.8	67.2			
	Locked Rotor	3	4.5	2.3	5.4			
	Pull-Up	1.4	4.4	1.4	5.3			
	Rated Load	24.3	29.5	24.3	29.5			
	Service Factor	24.3	29.5	24.3	29.5			
Watts:	Rated Load	496.2	509	506.9	529			
Temperature Rise:	@ Rated Load	TEAO	TEAO	TEAO	TEAO			
Thermal Protector:	Trip Temp (°C)							
Winding Material:	Start (Auxiliary)	Cu	Cu	Cu	Cu			
	Run (Main)	Cu	Cu	Cu	Cu			
Capacitor(s):	Run (MFD / Volts)	12.5						
	No. of Run Capacitors							

MEDIUM-HIGH SPEED

HP:								
Volts:								
HZ:								
Efficiency:	@ Rated Load							
Power Factor:	@ Rated Load							
Amps:	@ No Load							
	@ Rated Load							
	@ Locked Rotor							
Torques: Oz.Ft. / Lb.In. (Circle One)	Breakdown							
	Locked Rotor							
	Pull-Up							
	Rated Load							
Watts:	@ Rated Load							
Temperature Rise:	@ Rated Load							

DRAWING NO. PAGE 1 of 1
5XPP1BG

REV.
-

Dayton Electric Mfg. Co. Lake Forest, IL 60045 USA

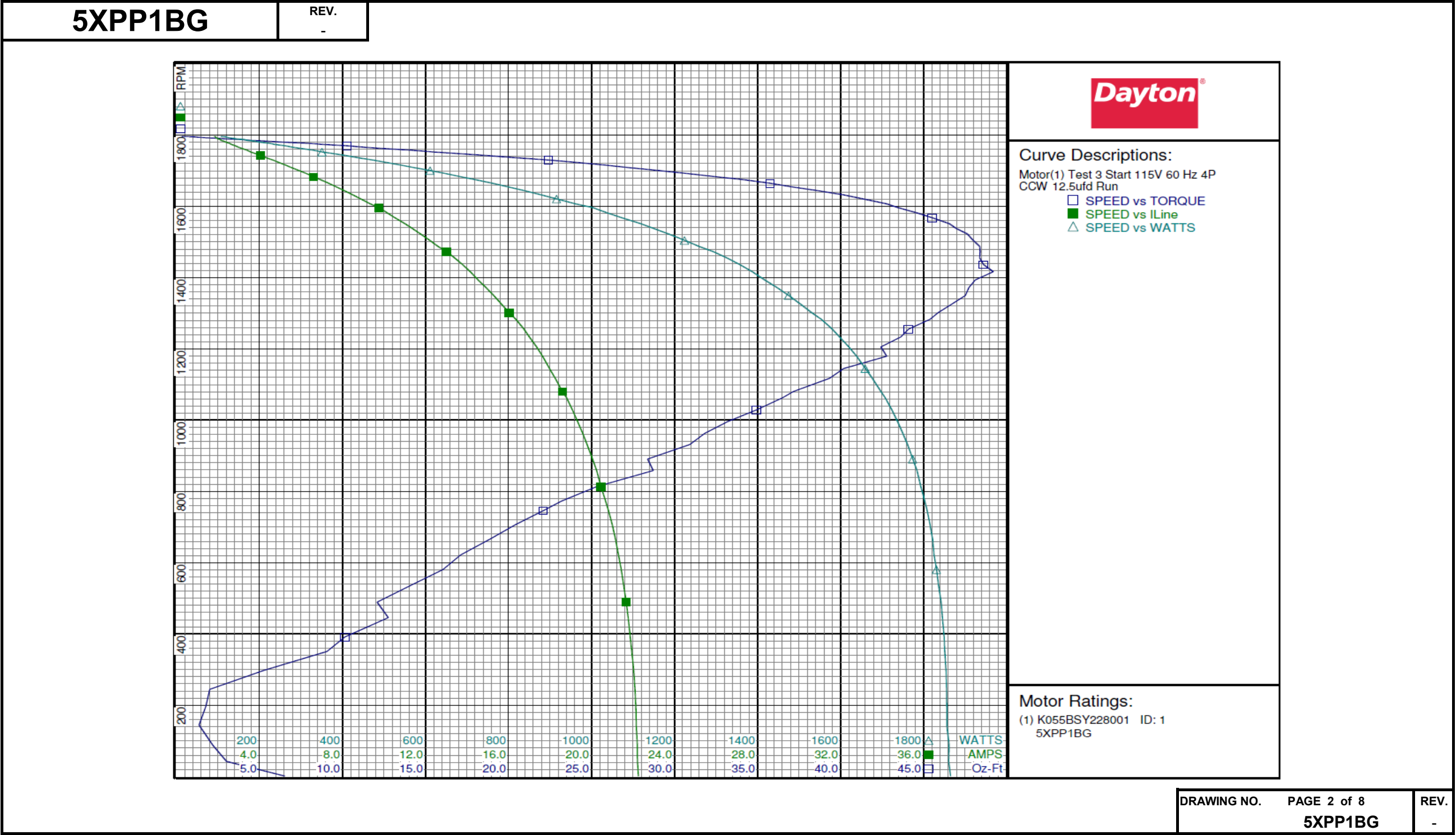
Performance Data



5XPP1BG		REV. -								
Dayton Manufacturing Company										
Motor Description				Test Conditions						
Model:	K055BSY228001 5XPP1BG		Test Type:	Start	Run Cap:	12.5 MFD 370 VOLTS				
Motor ID:	1		Test Number:	3	Start Cap:	0µfd				
Poles:	4		Poles:	4	Environment:	23.9 Deg C 29 % RH 972 hPa				
Volts:	115/230		Volts:	115	Tested:	1/18/2016 4:44:10 PM				
Frequency:	60/50		Hz:	60	Tested By:	Bribiesca, Griselda				
HP:	1/2		Rotation:	CCW	Gear Ratio:	1:1				
Speed:	1725/1425		Special Cond:		Bearing Friction:	-0.40 Oz-Ft				
Phase:	1		Speed Conn:		Windage Torque:	-1.81 Oz-Ft				
Protector:	MANUAL		TestBoard:	CMD InLine Three Phase #1 Fixture #1						
Special Points	Vline(V)	Vaux(V)	Vcap(V)	Iline(A)	Watts	RPM	Tq(Oz-ft)	HP	Eff(%)	PF(%)
	115.0	23.1	124.6	22.21	1860.6	42	3.01	0.001	0.1	72.8
PUT OZ-FT	115.0	24.3	121.2	22.15	1855.8	144	1.36	0.002	0.1	72.9
	115.0	25.6	119.3	22.13	1855.9	196	1.77	0.004	0.2	72.9
	115.0	32.3	116.0	21.94	1850.8	350	9.07	0.038	1.5	73.4
	115.0	38.9	113.4	21.67	1842.3	489	12.08	0.070	2.8	73.9
	115.0	46.3	110.6	21.30	1825.3	621	17.11	0.127	5.2	74.5
	115.0	55.3	109.4	20.82	1808.4	746	22.10	0.196	8.1	75.5
	115.0	64.4	109.2	20.25	1784.0	858	28.72	0.293	12.3	76.6
	115.0	74.4	110.3	19.57	1749.8	963	31.83	0.365	15.5	77.7
	115.0	85.0	112.8	18.79	1707.6	1062	36.51	0.462	20.2	79.0
	115.0	95.7	116.9	17.97	1659.6	1144	40.18	0.547	24.6	80.3
	115.0	107.6	123.1	17.01	1597.5	1233	43.63	0.640	29.9	81.7
	115.0	119.1	130.4	16.03	1530.2	1301	45.87	0.711	34.6	83.0
	115.0	131.9	140.0	14.92	1447.3	1371	47.73	0.779	40.2	84.4
	115.0	144.5	150.7	13.77	1356.6	1436	48.61	0.831	45.7	85.6
	115.0	157.1	162.2	12.61	1259.2	1487	48.38	0.856	50.7	86.8
	115.0	170.0	174.9	11.36	1149.5	1537	46.97	0.860	55.8	88.0
	115.0	182.2	187.5	10.16	1038.7	1581	44.62	0.840	60.3	88.9
	115.0	194.6	201.1	8.88	915.9	1620	41.37	0.798	65.0	89.7
	115.0	205.8	213.9	7.71	799.4	1654	37.08	0.730	68.1	90.2
	115.0	216.0	225.8	6.61	685.2	1683	32.51	0.651	70.9	90.2
	115.0	226.0	238.1	5.53	570.5	1709	27.17	0.553	72.3	89.7
	115.0	233.9	248.1	4.64	472.9	1729	22.42	0.462	72.8	88.6
	115.0	241.2	257.6	3.84	381.2	1747	17.16	0.357	69.8	86.4
	115.0	248.0	266.8	3.17	301.3	1761	12.47	0.261	64.7	82.7
	115.0	254.4	275.2	2.66	238.7	1773	8.95	0.189	59.0	77.9
	115.0	260.1	283.7	2.27	186.4	1782	5.38	0.114	45.7	71.3
	115.0	264.9	290.8	2.02	146.7	1789	3.06	0.065	33.2	63.2
	115.0	267.2	295.3	1.88	119.2	1794	1.09	0.023	14.6	55.1
	115.0	267.9	296.2	1.83	107.7	1795	0.34	0.007	5.0	51.1
DRAWING NO. PAGE 1 of 8										
5XPP1BG										
REV.										

Dayton Electric Mfg. Co. Lake Forest, IL 60045 USA

Performance Data



Performance Data



5XPP1BG

REV.

-

Dayton Manufacturing Company

Motor Description

Model: K055BSY228001 5XPP1BG
 Motor ID: 1
 Poles: 4
 Volts: 115/230
 Frequency: 60/50
 HP: 1/2
 Speed: 1725/1425
 Phase: 1
 Protector: MANUAL

Test Conditions

Test Type: Run
 Test Number: 4
 Poles: 4
 Volts: 115
 Hz: 60
 Rotation: CCW
 Special Cond:
 Speed Conn:
 TestBoard: CMD InLine Three Phase #1 Fixture #1
 Run Cap: 12.5 MFD 370 VOLTS
 Start Cap: 0µfd
 Environment: 23.9 Deg C 29 % RH 972 hPa
 Tested: 1/18/2016 4:41:35 PM
 Tested By: Bribiesca, Griselda
 Gear Ratio: 1:1
 Bearing Friction: -0.44 Oz-Ft
 Windage Torque: -1.44 Oz-Ft

Special Points	Vline(V)	Vaux(V)	Vcap(V)	Iline(A)	Watts	RPM	Tq(Oz-ft)	HP	Eff(%)	PF(%)
	115.0	0.0	0.0	1.84	105.9	1792	0.00	0.000	0.0	50.1
	115.0	0.0	0.0	2.05	150.9	1786	3.06	0.065	32.2	63.9
	115.0	0.0	0.0	2.35	195.7	1780	6.29	0.133	50.8	72.4
	115.0	0.0	0.0	2.74	247.0	1770	9.76	0.206	62.1	78.3
	115.0	0.0	0.0	3.33	319.4	1759	14.14	0.296	69.1	83.4
	115.0	0.0	0.0	4.10	410.9	1742	19.42	0.403	73.1	87.2
1725 RPM	115.0	0.0	0.0	4.80	491.2	1725	24.01	0.493	74.9	88.9
24.3 OZ-FT	115.0	0.0	0.0	4.85	496.2	1724	24.30	0.499	75.0	88.9
0.5 HP	115.0	0.0	0.0	4.86	497.5	1724	24.37	0.500	75.0	89.0
	115.0	0.0	0.0	4.90	501.6	1723	24.61	0.505	75.0	89.0
	115.0	0.0	0.0	5.88	608.4	1702	30.14	0.611	74.9	90.0
	115.0	0.0	0.0	6.96	722.3	1675	35.58	0.709	73.3	90.3
	115.0	202.6	209.5	8.19	851.9	1644	41.20	0.806	70.6	90.4
	115.0	190.2	195.7	9.49	977.6	1608	45.34	0.868	66.2	89.6
	115.0	178.3	182.7	10.73	1094.0	1568	48.57	0.907	61.8	88.7
	115.0	164.9	168.9	12.07	1215.2	1521	51.00	0.923	56.7	87.5
	115.0	152.3	156.7	13.29	1319.1	1471	52.26	0.915	51.7	86.3
BDT OZ-FT	115.0	144.1	149.3	14.06	1382.4	1435	52.45	0.896	48.3	85.5
	115.0	139.9	145.6	14.45	1413.3	1415	52.38	0.883	46.6	85.0
	115.0	126.5	134.7	15.65	1504.2	1349	51.25	0.823	40.8	83.6
	115.0	114.4	126.2	16.71	1579.8	1280	49.51	0.754	35.6	82.2
	115.0	102.6	119.3	17.68	1642.6	1203	46.92	0.672	30.5	80.8
	115.0	91.2	114.1	18.56	1695.9	1119	43.48	0.579	25.5	79.4
	115.0	80.8	110.8	19.33	1738.0	1029	39.51	0.484	20.8	78.2
	115.0	70.5	109.1	20.05	1775.3	926	35.12	0.387	16.3	77.0
	115.0	60.9	108.7	20.65	1802.9	819	30.63	0.298	12.3	75.9
	115.0	51.9	109.4	21.16	1822.9	702	25.76	0.215	8.8	74.9
	115.0	43.3	111.2	21.56	1836.3	574	21.02	0.144	5.8	74.1
	115.0	36.6	114.1	21.84	1849.0	445	17.57	0.093	3.8	73.6
	115.0	29.5	117.1	22.04	1854.3	298	12.83	0.045	1.8	73.2
	115.0	24.7	120.6	22.12	1856.6	144	10.81	0.019	0.7	73.0

DRAWING NO.	PAGE 3 of 8	REV.
5XPP1BG		-

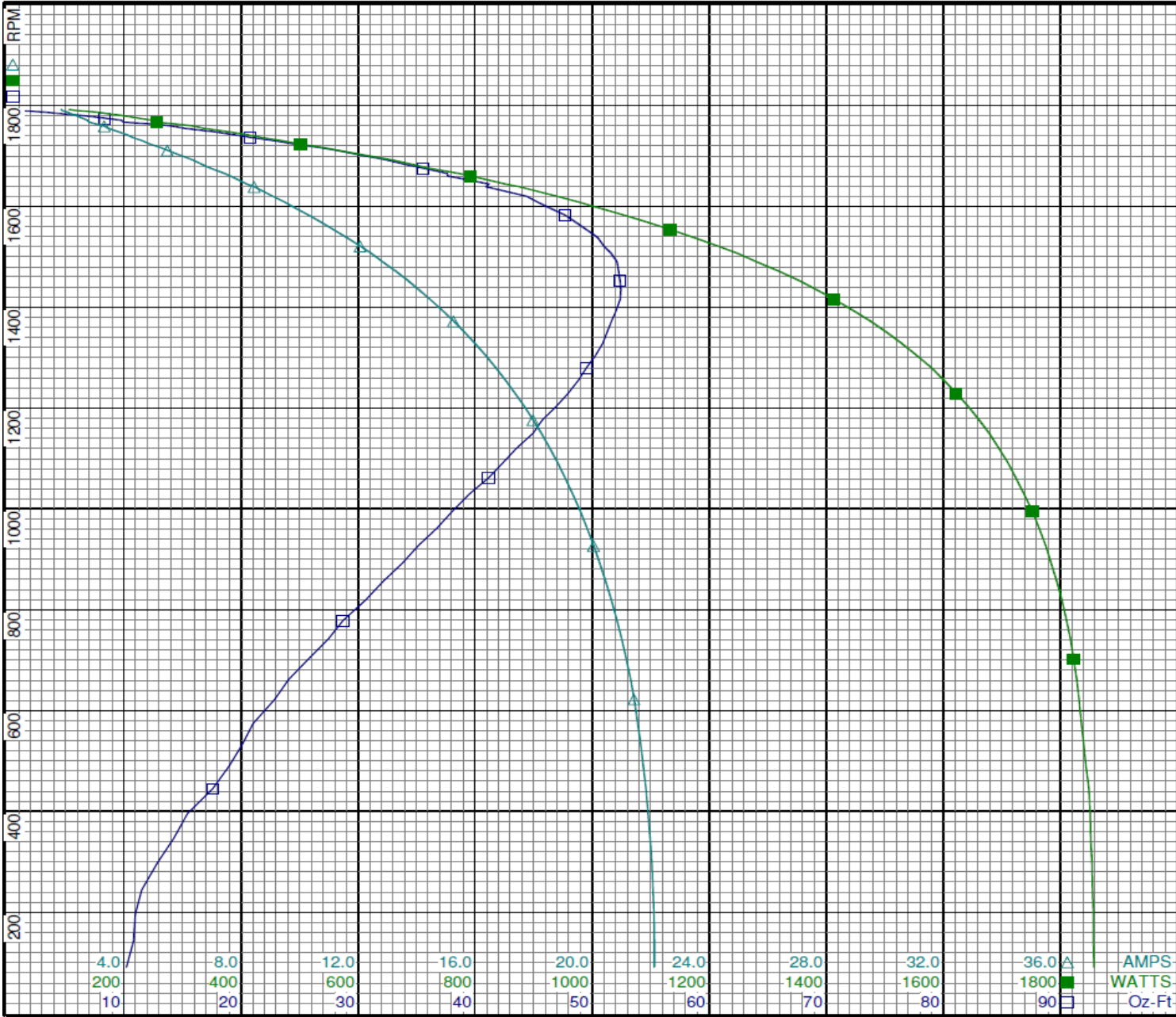
Dayton Electric Mfg. Co. Lake Forest, IL 60045 USA

Performance Data



5XPP1BG

REV.
-



Curve Descriptions:
Motor(1) Test 4 Run 115V 60 Hz 4P
CCW 12.5ufd Run
□ SPEED vs TORQUE
■ SPEED vs WATTS
△ SPEED vs ILine

Motor Ratings:
(1) K055BSY228001 ID: 1
5XPP1BG

DRAWING NO.	PAGE 4 of 8	REV.
5XPP1BG		-

Dayton Electric Mfg. Co. Lake Forest, IL 60045 USA

Performance Data



5XPP1BG

REV.

-

Dayton Manufacturing Company

Motor Description

Model: K055BSY228001 5XPP1BG
 Motor ID: 1
 Poles: 4
 Volts: 115/230
 Frequency: 60/50
 HP: 1/2
 Speed: 1725/1425
 Phase: 1
 Protector: MANUAL

Test Conditions

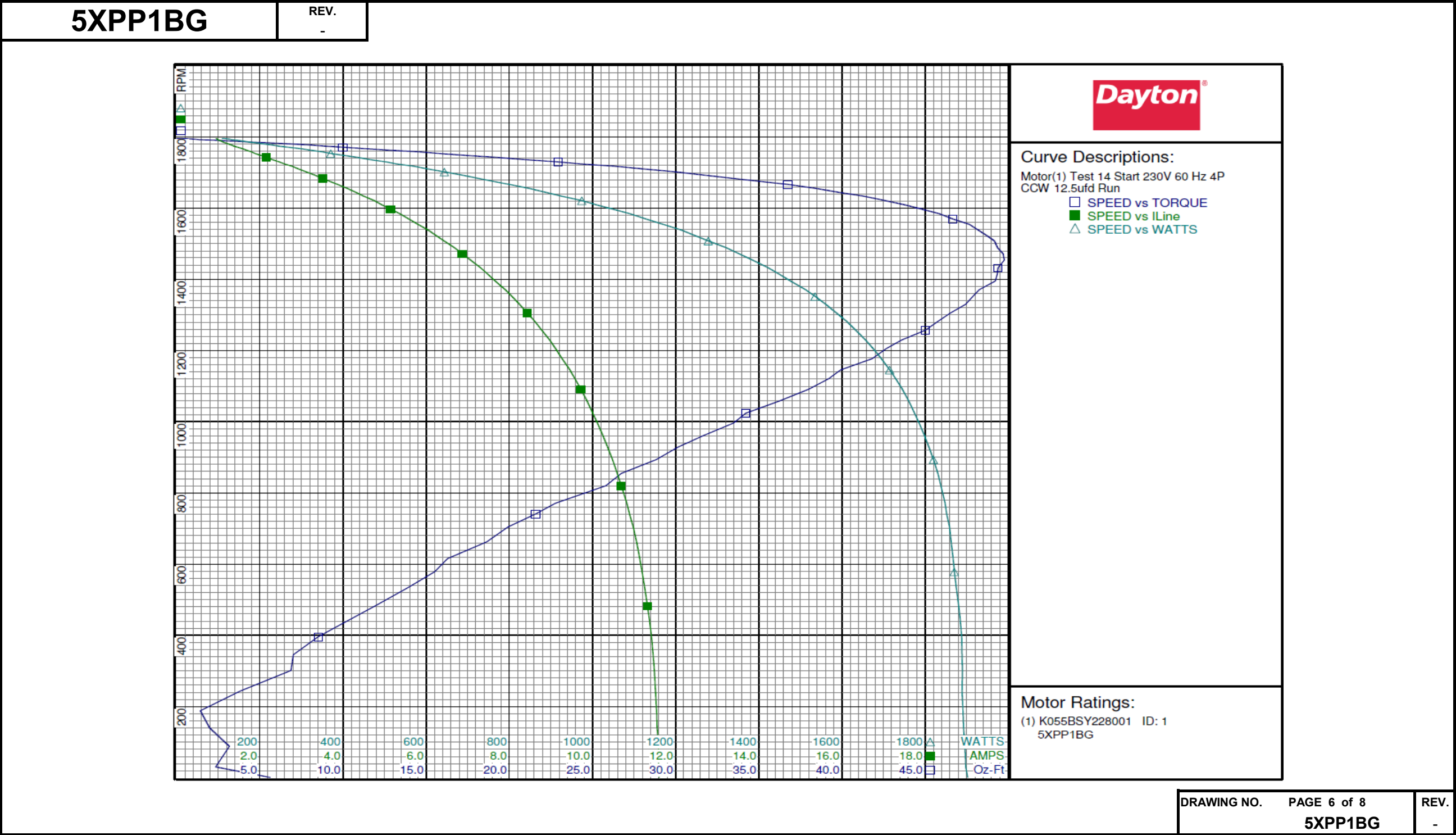
Test Type: Start
 Test Number: 14
 Poles: 4
 Volts: 230
 Hz: 60
 Rotation: CCW
 Special Cond:
 Speed Conn:
 TestBoard: CMD InLine Three Phase #1 Fixture #1
 Run Cap: 12.5 MFD 370 VOLTS
 Start Cap: 0µfd
 Environment: 24.0 Deg C 30 % RH 971 hPa
 Tested: 1/18/2016 4:12:14 PM
 Tested By: Bribiesca, Griselda
 Gear Ratio: 1:1
 Bearing Friction: -0.45 Oz-Ft
 Windage Torque: -1.60 Oz-Ft

Special Points	Vline (V)	Vaux (V)	Vcap (V)	Iline (A)	Watts	RPM	Tq (Oz-ft)	HP	Eff (%)	PF (%)
PUT OZ-FT	230.0	22.6	122.8	11.586	1897.4	30	2.34	0.001	0.0	71.2
	230.0	25.4	116.9	11.539	1891.0	188	1.42	0.003	0.1	71.3
	230.0	31.1	113.6	11.457	1888.5	345	7.01	0.029	1.1	71.7
	230.0	37.1	111.2	11.321	1880.6	482	11.92	0.068	2.7	72.2
	230.0	44.5	108.6	11.136	1867.2	615	16.28	0.119	4.8	72.9
	230.0	53.4	107.2	10.889	1851.5	741	21.58	0.190	7.7	73.9
	230.0	62.4	107.1	10.595	1830.4	854	26.73	0.272	11.1	75.1
	230.0	72.0	107.9	10.249	1798.5	960	31.65	0.362	15.0	76.3
	230.0	82.1	110.3	9.870	1760.6	1058	36.21	0.456	19.3	77.6
	230.0	92.6	114.2	9.454	1714.9	1145	39.91	0.544	23.7	78.9
	230.0	104.4	120.2	8.969	1656.7	1229	43.58	0.638	28.7	80.3
	230.0	116.4	127.8	8.437	1587.1	1304	46.49	0.722	33.9	81.8
	230.0	128.2	136.5	7.902	1512.2	1371	48.25	0.787	38.8	83.2
	230.0	140.8	147.0	7.306	1422.3	1432	49.38	0.842	44.1	84.6
	230.0	153.9	158.9	6.678	1321.1	1489	49.35	0.875	49.4	86.0
	230.0	166.6	171.3	6.045	1213.4	1538	48.19	0.882	54.2	87.3
	230.0	179.8	185.0	5.363	1089.8	1584	45.84	0.864	59.2	88.4
	230.0	191.2	197.4	4.753	974.4	1620	42.61	0.822	62.9	89.1
	230.0	203.1	210.9	4.102	847.6	1655	38.42	0.757	66.6	89.8
	230.0	213.4	223.0	3.517	728.2	1683	33.57	0.672	68.9	90.0
	230.0	223.1	235.0	2.942	606.6	1709	28.18	0.573	70.5	89.6
	230.0	231.6	245.6	2.467	503.2	1730	22.94	0.472	70.0	88.7
	230.0	238.6	255.0	2.034	404.5	1747	17.52	0.364	67.2	86.5
	230.0	245.8	264.9	1.694	326.3	1762	13.04	0.273	62.5	83.7
	230.0	253.0	273.9	1.386	248.4	1773	9.07	0.192	57.5	78.0
	230.0	259.0	281.6	1.177	190.7	1783	5.65	0.120	46.9	70.5
	230.0	263.0	288.6	1.049	154.0	1789	2.95	0.063	30.4	63.8
	230.0	265.1	292.5	0.978	127.0	1793	1.06	0.023	13.3	56.4
	230.0	266.0	294.3	0.945	109.3	1795	0.00	0.000	0.0	50.3

DRAWING NO. PAGE 5 of 8 REV.
 5XPP1BG -

Dayton Electric Mfg. Co. Lake Forest, IL 60045 USA

Performance Data



Performance Data



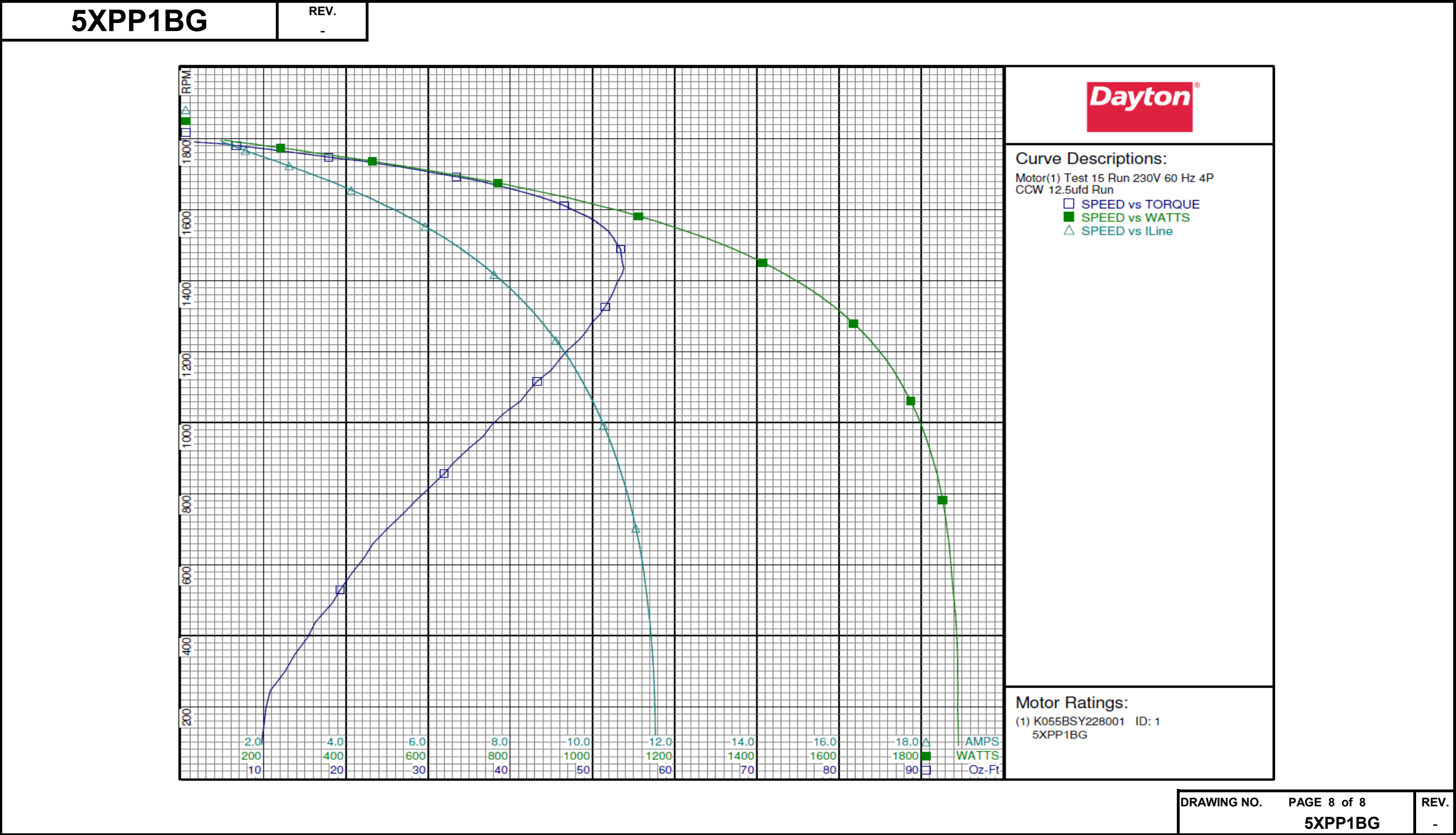
5XPP1BG		REV. -								
Dayton Manufacturing Company										
Motor Description					Test Conditions					
Model:	K055BSY228001 5XPP1BG			Test Type:	Run		Run Cap:	12.5 MFD 370 VOLTS		
Motor ID:	1			Test Number:	15		Start Cap:	0µfd		
Poles:	4			Poles:	4		Environment:	24.0 Deg C 30 % RH 971 hPa		
Volts:	115/230			Volts:	230		Tested:	1/18/2016 4:10:30 PM		
Frequency:	60/50			Hz:	60		Tested By:	Bribiesca, Griselda		
HP:	1/2			Rotation:	CCW		Gear Ratio:	1:1		
Speed:	1725/1425			Special Cond:			Bearing Friction:	-0.44 Oz-Ft		
Phase:	1			Speed Conn:			Windage Torque:	-1.39 Oz-Ft		
Protector:	MANUAL			TestBoard:	CMD InLine Three Phase #1 Fixture #1					
Special Points	Vline(V)	Vaux(V)	Vcap(V)	Iline(A)	Watts	RPM	Tq(Oz-ft)	HP	Eff(%)	PF(%)
	230.0	266.1	294.6	0.947	103.7	1795	0.00	0.000	0.0	47.6
	230.0	264.6	292.3	0.988	125.0	1791	1.34	0.029	17.1	55.0
	230.0	261.2	285.8	1.119	171.0	1785	4.86	0.103	45.1	66.5
	230.0	256.4	278.3	1.284	219.1	1777	7.74	0.164	55.7	74.2
	230.0	249.5	269.2	1.558	289.1	1766	11.75	0.247	63.7	80.7
	230.0	243.5	261.0	1.862	364.2	1753	16.16	0.337	69.1	85.0
	230.0	235.7	250.8	2.294	463.9	1736	21.95	0.454	73.0	87.9
1725 RPM	230.0	231.1	244.9	2.561	523.4	1725	25.24	0.518	73.9	88.9
24.3 OZ-FT	230.0	232.3	246.5	2.487	506.9	1728	24.30	0.500	73.5	88.6
0.5 HP	230.0	232.3	246.5	2.488	507.1	1728	24.31	0.500	73.5	88.6
	230.0	227.2	240.0	2.783	571.9	1715	27.72	0.566	73.9	89.3
	230.0	217.8	228.3	3.326	687.6	1692	33.44	0.674	73.1	89.9
	230.0	207.1	215.3	3.958	818.6	1663	39.21	0.776	70.8	89.9
	230.0	196.0	202.4	4.585	943.0	1632	43.99	0.855	67.6	89.4
	230.0	183.7	188.7	5.263	1072.2	1595	47.97	0.911	63.4	88.6
	230.0	171.2	175.4	5.928	1193.3	1552	51.20	0.946	59.1	87.5
	230.0	158.2	162.2	6.600	1309.7	1505	52.92	0.948	54.0	86.3
	230.0	145.1	149.8	7.253	1414.9	1451	53.63	0.926	48.8	84.8
BDT OZ-FT	230.0	141.4	146.6	7.425	1442.3	1435	53.81	0.919	47.5	84.5
	230.0	132.6	139.1	7.848	1504.9	1393	52.98	0.879	43.6	83.4
	230.0	119.8	129.2	8.437	1588.6	1326	51.55	0.814	38.2	81.9
	230.0	107.9	121.3	8.962	1657.3	1255	49.20	0.735	33.1	80.4
	230.0	96.2	115.0	9.455	1716.1	1175	45.89	0.642	27.9	78.9
	230.0	85.1	110.5	9.890	1762.7	1086	42.10	0.545	23.0	77.5
	230.0	74.9	107.9	10.273	1800.7	992	37.68	0.445	18.4	76.2
	230.0	65.1	106.7	10.612	1830.7	889	33.17	0.351	14.3	75.0
	230.0	56.3	106.8	10.892	1852.8	781	28.55	0.266	10.7	74.0
	230.0	47.2	107.7	11.135	1867.8	659	23.26	0.182	7.3	72.9
	230.0	39.7	109.9	11.303	1877.6	530	19.31	0.122	4.8	72.2
	230.0	32.8	112.8	11.431	1886.9	395	15.33	0.072	2.8	71.8
	230.0	26.8	115.6	11.507	1889.8	245	10.78	0.031	1.2	71.4
	230.0	22.9	120.3	11.525	1890.7	90	9.67	0.010	0.4	71.3

DRAWING NO. PAGE 7 of 8

5XPP1BG

REV.
-

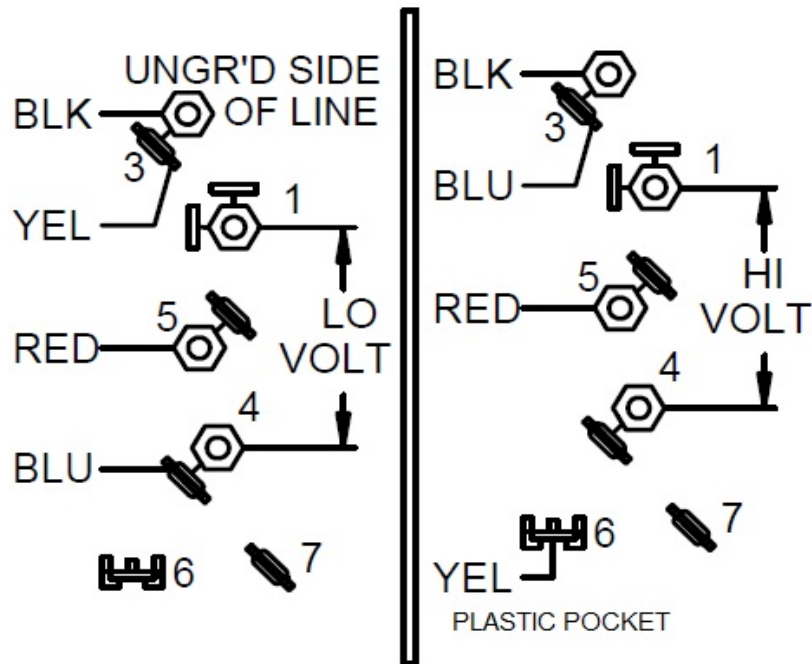
Performance Data



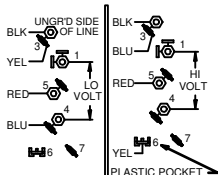
5XPP1BG

REV.
0

CONNECTIONS



CONNECT CAP BETWEEN 5 & 7
TO REVERSE ROTATION INTER-
CHANGE RED & BLK LEADS

Dayton[®]**FARM DUTY MOTOR****HP:** 1/2**VOLTS:** 115/230**AMPS:** 5.0/2.5**RPM:** 1725&1425**DUTY:** CONT**SF:** 1.0**KVA CODE:** J**ENCL:** TEAO**THERMALLY PROTECTED:** MANUALMFG. NO. PROT. CODE: AVG. F.L.
EFF.**MTR REF:** K55KZBSY-2280**PH:** 1**HZ:** 60&50**FR:** 48YZ**INS CL:** B**AMB:** 40 °C**SFA:** 5.0/2.5Part No **5XPP1BG****Disconnect Power Before Making Any
Electrical Connections or Changes****CONNECTIONS**

CONNECT CAP BETWEEN 5 & 7

TO REVERSE ROTATION INTER-
CHANGE RED & BLK LEADS

CAP 12.5 MFD/370 VAC

Mfd for Dayton Electric Mfg. Co., Lake Forest, IL 60045 USA

 Made in Mexico