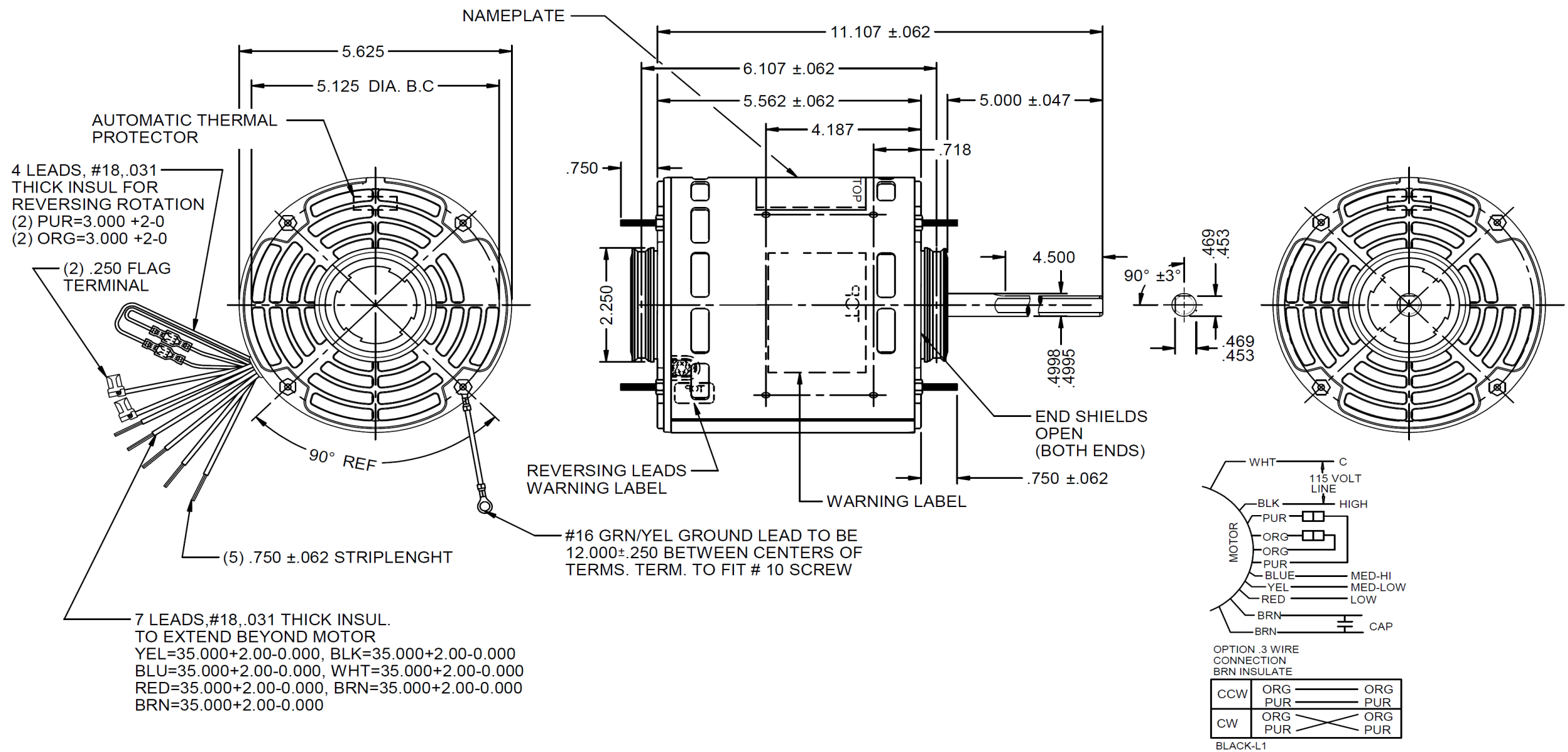


Dimensional Drawing



5RHT8BG REV. -

MODEL	REF	CUSTOMER	HP	VOLTS	AMPS	HZ	RPM	ROTATION	CUSTOMER PN	DESCRIPTION / REMARKS
K55HXLPF-2523	C43284	GRAINGER	3/4-1/2-1/3-1/4-1/5	115	8.7-2.4	60	1075/4 SPD	REVERSIBLE	5RHT8BG	48 YZ , DIRECT DRIVE BLOWER.



DRAWING NO. PAGE 1 of 1 REV.
5RHT8BG -

Dayton Electric Mfg. Co. Lake Forest, IL 60045 USA

Performance Data



5RHT8BG

REV.
-

MOTOR PERFORMANCE

HP:	3/4, 1/2, 1/3, 1/4, 1/5	3/4HP	1/2HP	1.3HP	1/4HP	1/4HP	1/4HP	1/5HP	1/5HP
Poles:	6P								
No. of Speeds:	4Spd	High	High	High	Med-hi	Med-lo	Low	Med-Low	Low
Volts:	115	115	115	115	115	115	115	115	115
HZ:	60	60	60	60	60	60	60	60	60
Service Factor:	1								
Efficiency:	@ Rated Load								
Power Factor:	@ Rated Load								
Amps:	@ No Load								
	@ Rated Load	8.739	5.411	4.469	3.16	2.911	3.229	2.456	2.301
	@ Service Factor	NA	NA	NA	NA	NA	NA	NA	NA
	@ Locked Rotor	18.245			11.341	7.959	6.038		
RPM:	@ Rated Load	1093	1148	1164	1162	1141	1085	1159	1141
Ambient (°C):									
Altitude (FASL):									
Torques:	Breakdown	66.48	66.42	60.67	37.07	26.32	20.32	26.32	20.32
	Locked Rotor	13.65			2.57	2.82	0.779		
	Pull-Up	11.66			2.57	2.26	0.779		
	Rated Load	57.67	36.58	24.03	18.07	18.4	19.35	14.49	14.72
	Service Factor	NA	NA	NA	NA	NA	NA	NA	NA
Watts:	Rated Load	843.4	549.5	368.6	285.5	284.5	327.9	231.2	228.4
KVA Code:									
Temperature Rise:	@ Rated Load								
	@ Service Factor								
Thermal Protector:	Trip Temp (°C)								
Winding Material:	Start (Auxiliary)	Cu							
	Run (Main)	Cu							
Capacitor(s):	Start (MFD / Volts)								
	No. of Start Capacitors								
	Run (MFD / Volts)	7.5 & 10 370VAC							
	No. of Run Capacitors								

LOW SPEED PERFORMANCE DATA:

HP:		120	208	230	277	460	100	200
Poles:								
Volts:		120	208	230	277	460	100	200
HZ:		60	60	60	60	60	50	50
Efficiency:	@ Rated Load							
Power Factor:	@ Rated Load							
Amps:	@ No Load							
	@ Rated Load							
	@ Service Factor							
	@ Locked Rotor							
Torques:	@ Rated Load							
	Locked Rotor							
	Pull-Up							
	Rated Load							
	Service Factor							
Watts:	@ Rated Load							
Temperature Rise:	@ Rated Load							
	@ Service Factor							

DRAWING NO. PAGE 1 of REV.
5RHT8BG -

Performance Data



5RHT8BG

REV.

-

Dayton Manufacturing Company

Motor Description

Model: K055LPF2523
 Motor ID: 1/1
 Poles: 6
 Volts: 115
 Frequency: 60
 HP: 3/4
 Speed: 1075
 Phase: 1
 Protector: 7AM036-A5

Test Conditions

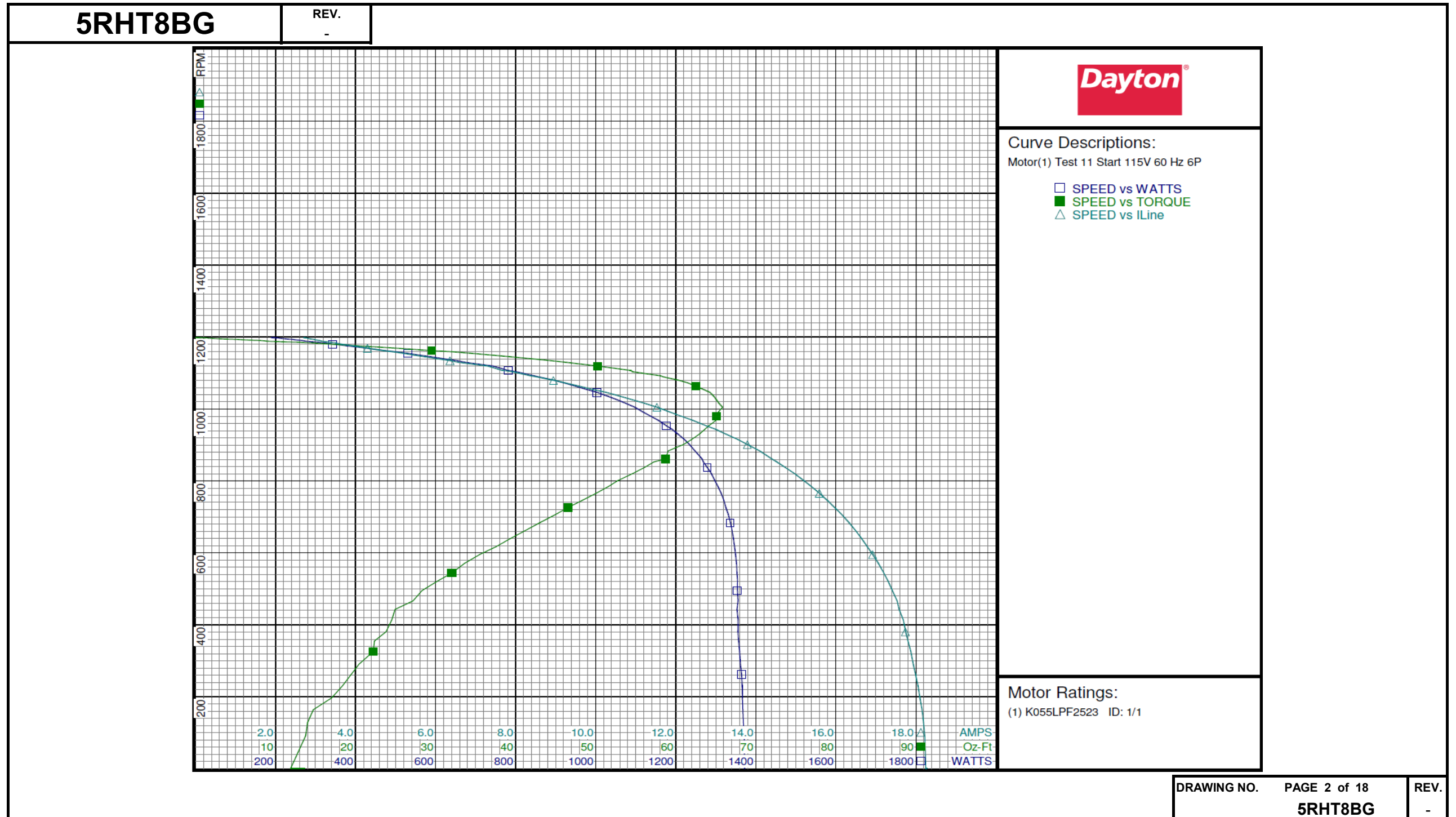
Test Type: Start
 Test Number: 11
 Poles: 6
 Volts: 115
 Hz: 60
 Rotation:
 Special Cond:
 Speed Conn:
 TestBoard: CMD InLine Three Phase #2 Fixture #1
 Run Cap: 0
 Start Cap: 0µfd
 Environment: 24.8 Deg C 53 % RH 962 hPa
 Tested: 9/5/2016 5:21:54 PM
 Tested By: Navarro, Susana
 Gear Ratio: 1:1
 Bearing Friction: -0.25 Oz-Ft
 Windage Torque: -2.31 Oz-Ft

Special Points	Vline (V)	Vaux (V)	Vcap (V)	Iline (A)	Watts	RPM	Tq (Oz-ft)	HP	Eff (%)	PF (%)
	115.0	62.0	197.3	18.266	1372.0	0	13.65	0.000	0.0	65.3
PUT OZ-FT	115.0	62.3	194.7	18.245	1371.6	0	11.86	0.000	0.0	65.4
	115.0	62.3	190.5	18.188	1368.6	128	13.98	0.021	1.2	65.4
	115.0	63.9	183.9	18.051	1365.9	230	18.35	0.050	2.7	65.8
	115.0	66.2	178.6	17.871	1359.5	325	22.19	0.086	4.7	66.2
	115.0	71.8	172.8	17.683	1355.7	413	24.51	0.121	6.6	66.7
	115.0	80.8	169.7	17.411	1353.9	495	28.28	0.167	9.2	67.6
	115.0	91.6	168.7	17.063	1351.6	571	33.59	0.228	12.6	68.9
	115.0	103.2	168.7	16.645	1344.0	639	39.32	0.299	16.6	70.2
	115.0	116.8	170.5	16.146	1331.3	706	44.95	0.378	21.2	71.7
	115.0	131.6	174.3	15.587	1313.1	766	50.06	0.456	25.9	73.3
	115.0	147.8	180.7	14.959	1288.5	821	54.65	0.534	30.9	74.9
	115.0	162.0	187.7	14.399	1265.6	861	58.70	0.602	35.5	76.4
	115.0	183.5	201.6	13.556	1221.9	914	61.95	0.674	41.2	78.4
	115.0	203.6	216.5	12.755	1176.4	953	64.13	0.728	46.1	80.2
	115.0	226.1	235.4	11.839	1117.4	991	65.31	0.771	51.5	82.1
	115.0	248.5	255.8	10.904	1052.3	1026	65.06	0.794	56.3	83.9
	115.0	271.2	278.2	9.918	976.5	1054	63.43	0.796	60.8	85.6
	115.0	292.8	300.5	8.946	895.5	1080	60.33	0.775	64.6	87.0
	115.0	314.3	324.3	7.925	800.8	1103	54.59	0.717	66.8	87.9
	115.0	327.5	338.8	7.302	742.9	1119	50.22	0.669	67.2	88.5
	115.0	352.7	367.7	6.034	619.5	1139	41.87	0.568	68.4	89.3
	115.0	368.7	387.1	5.200	530.3	1154	34.52	0.474	66.7	88.7
	115.0	383.4	405.1	4.466	446.5	1166	27.00	0.375	62.6	86.9
	115.0	396.6	421.8	3.908	377.5	1175	20.17	0.282	55.8	84.0
	115.0	407.1	435.4	3.519	326.5	1183	15.04	0.212	48.4	80.7
	115.0	413.7	447.2	3.160	276.0	1188	9.11	0.129	34.8	76.0
	115.0	415.9	452.9	2.947	240.4	1193	4.92	0.070	21.7	70.9
	115.0	418.4	458.5	2.782	208.2	1197	1.56	0.022	8.0	65.1
	115.0	419.7	461.3	2.697	189.1	1198	0.00	0.000	0.0	61.0

DRAWING NO. PAGE 1 of 18 REV.
5RHT8BG -

Dayton Electric Mfg. Co. Lake Forest, IL 60045 USA

Performance Data



DRAWING NO.	PAGE 2 of 18	REV.
5RHT8BG		-

Dayton Electric Mfg. Co. Lake Forest, IL 60045 USA

Performance Data



5RHT8BG

REV.

-

Dayton Manufacturing Company

Motor Description

Model: K055LPF2523
 Motor ID: 1/1
 Poles: 6
 Volts: 115
 Frequency: 60
 HP: 3/4
 Speed: 1075
 Phase: 1
 Protector: 7AM036-A5

Test Conditions

Test Type: Run
 Test Number: 6
 Poles: 6
 Volts: 115
 Hz: 60
 Rotation:
 Special Cond: M1
 Speed Conn:
 TestBoard: CMD InLine Three Phase #1 Fixture #1
 Run Cap: 0
 Start Cap: 0µfd
 Environment: 25.1 Deg C 54 % RH 962 hPa
 Tested: 8/12/2016 9:06:55 AM
 Tested By: Navarro, Susana
 Gear Ratio: 1:1
 Bearing Friction: -0.13 Oz-Ft
 Windage Torque: -0.53 Oz-Ft

Special Points	Vline (V)	Vaux (V)	Vcap (V)	Iline (A)	Watts	RPM	Tq (Oz-ft)	HP	Eff (%)	PF (%)
	115.0	416.5	459.4	2.735	182.4	1196	0.00	0.000	0.0	58.0
	115.0	416.3	457.3	2.844	210.2	1194	2.89	0.041	14.6	64.3
	115.0	414.0	452.0	3.026	247.2	1190	6.76	0.096	28.9	71.0
	115.0	409.1	442.7	3.306	291.6	1185	11.76	0.166	42.4	76.7
	115.0	399.6	427.3	3.704	346.5	1178	17.43	0.244	52.6	81.3
	115.0	387.1	410.9	4.230	414.8	1169	24.36	0.339	60.9	85.3
	115.0	373.3	393.8	4.860	488.2	1158	30.99	0.427	65.3	87.3
0.5 HP	115.0	362.5	380.7	5.411	549.5	1148	36.58	0.500	67.9	88.3
38.74 OZ-FT	115.0	358.0	375.1	5.653	575.9	1144	38.74	0.528	68.3	88.6
	115.0	357.2	374.1	5.699	580.9	1143	39.16	0.533	68.4	88.6
1140 RPM	115.0	353.4	369.7	5.893	601.1	1140	40.81	0.554	68.7	88.7
	115.0	340.0	353.6	6.596	673.8	1128	46.61	0.626	69.3	88.8
	115.0	320.4	331.1	7.589	770.6	1109	53.31	0.704	68.2	88.3
0.75 HP	115.0	304.2	313.2	8.379	843.4	1093	57.67	0.750	66.3	87.5
	115.0	300.1	308.7	8.579	861.5	1088	58.67	0.760	65.8	87.3
58.92 OZ-FT	115.0	299.0	307.5	8.629	865.9	1087	58.92	0.763	65.7	87.3
1085 RPM	115.0	296.7	305.0	8.740	875.7	1085	59.48	0.768	65.5	87.1
	115.0	277.2	284.3	9.654	953.7	1063	62.88	0.796	62.2	85.9
	115.0	255.7	262.7	10.615	1030.3	1037	65.55	0.809	58.6	84.4
	115.0	232.5	240.7	11.625	1103.7	1004	66.41	0.794	53.7	82.6
BDT OZ-FT	115.0	225.5	234.4	11.921	1124.2	993	66.48	0.786	52.1	82.0
	115.0	210.1	221.2	12.556	1165.2	969	65.84	0.759	48.6	80.7
	115.0	189.8	205.4	13.389	1214.7	930	64.16	0.710	43.6	78.9
	115.0	169.2	191.4	14.209	1257.3	885	60.95	0.642	38.1	76.9
	115.0	151.6	181.8	14.888	1287.8	838	57.22	0.571	33.1	75.2
	115.0	135.0	174.6	15.523	1313.1	785	53.02	0.496	28.2	73.6
	115.0	119.8	170.3	16.098	1332.1	726	47.96	0.415	23.2	72.0
	115.0	106.3	168.2	16.580	1345.3	664	43.14	0.341	18.9	70.6
	115.0	93.8	167.8	17.015	1353.9	594	37.43	0.265	14.6	69.2
	115.0	83.3	168.8	17.356	1357.9	523	32.50	0.202	11.1	68.0
	115.0	73.4	170.6	17.621	1358.1	444	28.25	0.149	8.2	67.0
	115.0	66.5	175.2	17.804	1359.8	358	25.09	0.107	5.9	66.4
	115.0	63.2	180.6	17.951	1364.6	266	22.06	0.070	3.8	66.1
	115.0	61.2	186.5	18.079	1371.2	168	19.35	0.039	2.1	66.0
	115.0	61.4	193.7	18.161	1375.5	64	15.96	0.012	0.7	65.9

DRAWING NO. PAGE 3 of 18 REV.
5RHT8BG -

Dayton Electric Mfg. Co. Lake Forest, IL 60045 USA

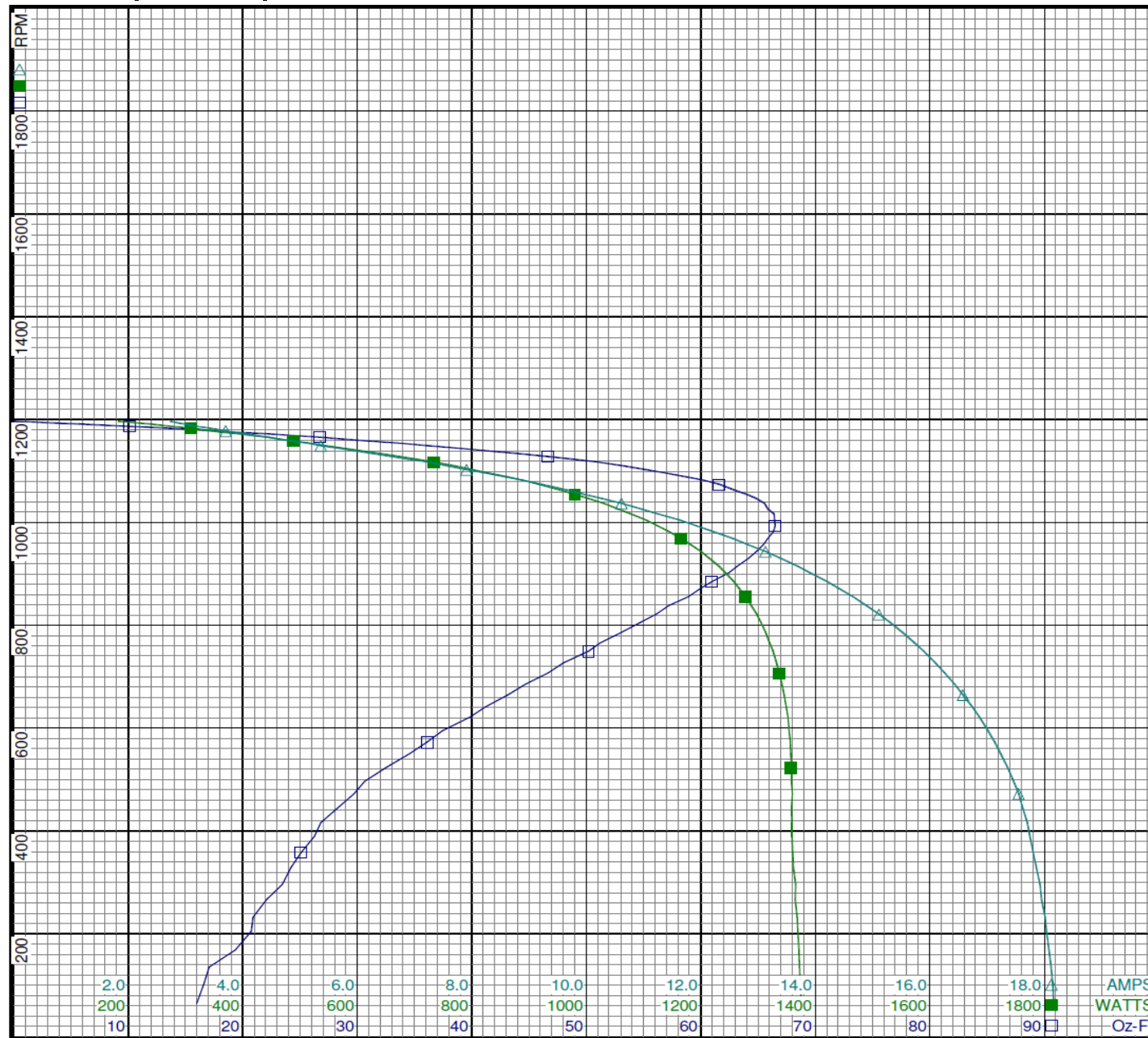
Performance Data



5RHT8BG

REV.

-



Curve Descriptions:

Motor(1) Test 6 Run 115V 60 Hz 6P
M1

- SPEED vs TORQUE
- SPEED vs WATTS
- △ SPEED vs ILine

Motor Ratings:

(1) K055LPPF2523 ID: 1/1

DRAWING NO.	PAGE 4 of 18	REV.
5RHT8BG		-

Dayton Electric Mfg. Co. Lake Forest, IL 60045 USA

Performance Data



5RHT8BG

REV.

-

Dayton Manufacturing Company

Motor Description

Model: K055LPF2523
 Motor ID: 1/1
 Poles: 6
 Volts: 115
 Frequency: 60
 HP: 3/4
 Speed: 1075
 Phase: 1
 Protector: 7AM036-A5

Test Conditions

Test Type: Run
 Test Number: 6
 Poles: 6
 Volts: 115
 Hz: 60
 Rotation:
 Special Cond: M1
 Speed Conn:
 TestBoard: CMD InLine Three Phase #1 Fixture #1
 Run Cap: 0
 Start Cap: 0µfd
 Environment: 26.5 Deg C 51 % RH 958 hPa
 Tested: 8/12/2016 2:47:06 PM
 Tested By: Navarro, Susana
 Gear Ratio: 1:1
 Bearing Friction: -0.08 Oz-Ft
 Windage Torque: -0.55 Oz-Ft

Special Points	Vline (V)	Vaux (V)	Vcap (V)	Iline (A)	Watts	RPM	Tq (Oz-ft)	HP	Eff (%)	PF (%)
	115.0	360.4	417.8	3.166	117.1	1197	0.00	0.000	0.0	32.2
	115.0	358.4	414.6	3.172	134.7	1195	1.93	0.027	15.2	36.9
	115.0	354.6	408.0	3.230	167.9	1191	5.38	0.076	33.9	45.2
	115.0	350.8	400.8	3.353	200.4	1187	8.81	0.124	46.3	52.0
	115.0	346.1	390.7	3.634	250.0	1180	13.63	0.191	57.1	59.8
	115.0	340.1	380.0	4.045	310.4	1172	18.95	0.264	63.6	66.7
24.93 OZ-FT	115.0	332.2	368.2	4.541	378.1	1162	24.93	0.345	68.0	72.4
0.333 HP	115.0	333.3	369.8	4.469	368.6	1164	24.03	0.333	67.4	71.7
	115.0	331.2	366.8	4.609	387.2	1161	25.79	0.356	68.7	73.0
1160 RPM	115.0	330.4	365.7	4.655	392.9	1160	26.28	0.363	68.9	73.4
	115.0	320.0	351.9	5.266	468.0	1148	32.40	0.443	70.6	77.3
	115.0	305.7	333.7	6.100	560.4	1134	39.11	0.528	70.3	79.9
	115.0	289.6	314.1	7.018	656.9	1116	45.73	0.608	69.0	81.4
	115.0	272.4	293.8	7.996	752.5	1096	51.26	0.669	66.3	81.8
	115.0	253.8	272.8	9.019	846.7	1072	55.78	0.712	62.7	81.6
	115.0	234.3	251.9	10.057	935.0	1046	58.72	0.731	58.4	80.8
	115.0	214.9	232.3	11.057	1014.9	1016	60.55	0.733	53.8	79.8
BDT OZ-FT	115.0	195.4	214.2	12.030	1086.0	982	60.67	0.709	48.7	78.5
	115.0	195.4	214.2	12.030	1086.0	982	60.67	0.709	48.7	78.5
	115.0	176.2	198.0	12.956	1147.9	944	59.38	0.667	43.4	77.0
	115.0	157.7	184.4	13.819	1199.7	901	56.90	0.610	38.0	75.5
	115.0	140.7	174.0	14.587	1240.7	855	53.73	0.547	32.9	74.0
	115.0	125.0	166.6	15.276	1273.2	804	49.83	0.477	28.0	72.5
	115.0	110.5	161.8	15.895	1298.8	748	45.25	0.403	23.1	71.1
	115.0	97.4	159.3	16.436	1317.9	687	40.49	0.331	18.7	69.7
	115.0	85.3	158.4	16.907	1331.6	621	35.32	0.261	14.6	68.5
	115.0	74.6	159.2	17.313	1341.0	549	30.24	0.198	11.0	67.4
	115.0	64.7	160.7	17.628	1344.5	472	25.47	0.143	7.9	66.3
	115.0	55.7	164.1	17.842	1345.9	388	22.25	0.103	5.7	65.6
	115.0	50.2	169.7	17.998	1351.8	299	19.84	0.071	3.9	65.3
	115.0	47.4	174.8	18.139	1357.3	203	16.67	0.040	2.2	65.1
	115.0	45.8	180.1	18.219	1361.7	101	13.71	0.016	0.9	65.0

DRAWING NO. PAGE 5 of 18 REV.
5RHT8BG -

Dayton Electric Mfg. Co. Lake Forest, IL 60045 USA

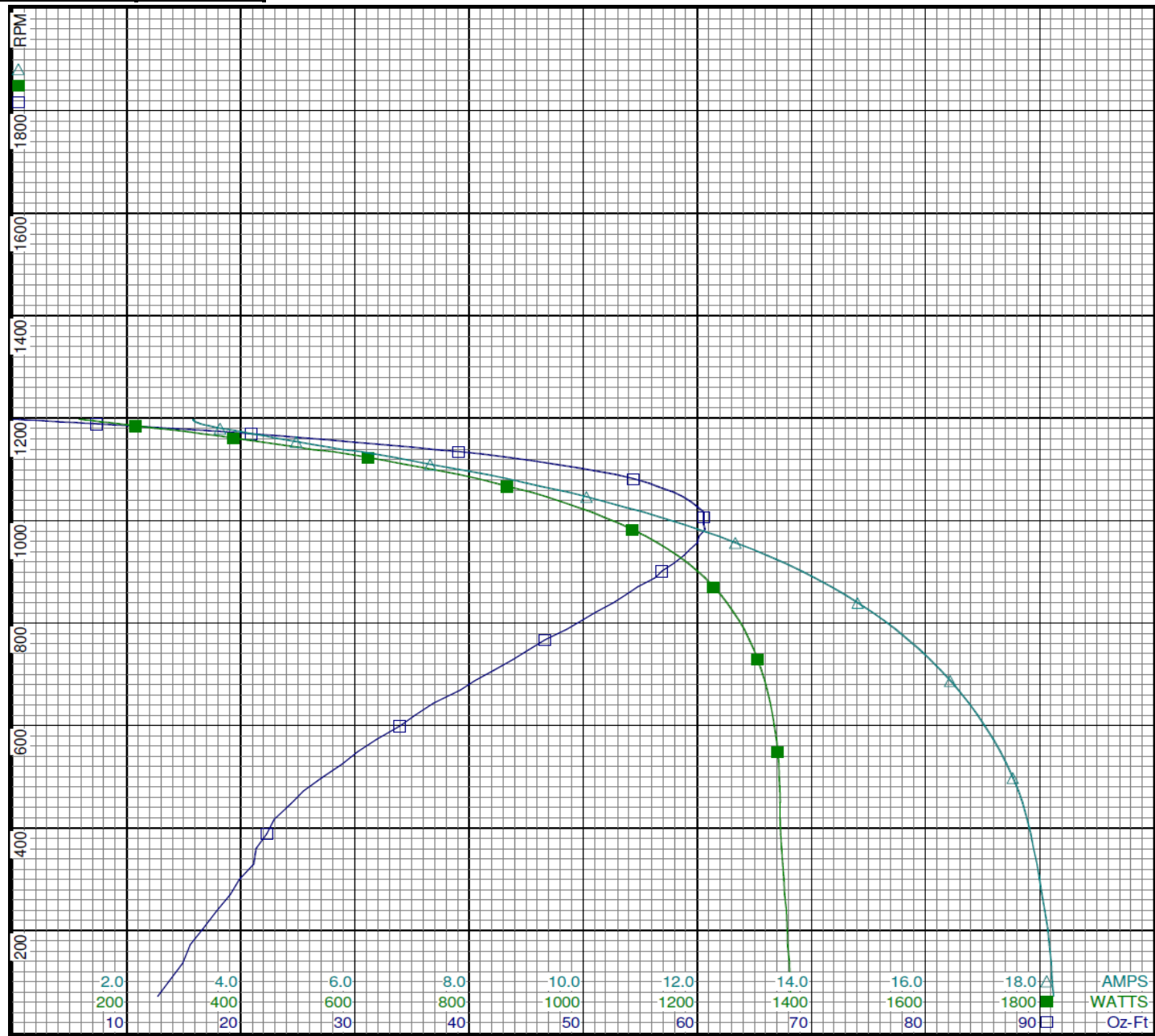
Performance Data



5RHT8BG

REV.

-



Curve Descriptions:

Motor(1) Test 6 Run 115V 60 Hz 6P
M1

- SPEED vs TORQUE
- SPEED vs WATTS
- △ SPEED vs ILine

Motor Ratings:

(1) K055LPPF2523 ID: 1/1

DRAWING NO.	PAGE 6 of 18	REV.
5RHT8BG		-

Dayton Electric Mfg. Co. Lake Forest, IL 60045 USA

Performance Data



5RHT8BG

REV.

-

Dayton Manufacturing Company

Motor Description

Model: K055LPF2523
 Motor ID: 1/1
 Poles: 6
 Volts: 115
 Frequency: 60
 HP: 3/4
 Speed: 1075
 Phase: 1
 Protector: 7AM036-A5

Test Conditions

Test Type: Start
 Test Number: 11
 Poles: 6
 Volts: 115
 Hz: 60
 Rotation:
 Special Cond: M2
 Speed Conn:
 TestBoard: CMD InLine Three Phase #2 Fixture #1
 Run Cap: 0
 Start Cap: 0µfd
 Environment: 23.3 Deg C 55 % RH 967 hPa
 Tested: 9/26/2016 11:56:17 AM
 Tested By: Navarro, Susana
 Gear Ratio: 1:1
 Bearing Friction: -0.19 Oz-Ft
 Windage Torque: -0.64 Oz-Ft

Special Points	Vline (V)	Vaux (V)	Vcap (V)	Iline (A)	Watts	RPM	Tq (Oz-ft)	HP	Eff (%)	PF (%)
PUT OZ-FT	115.0	43.2	166.0	11.341	971.9	20	2.57	0.001	0.0	74.5
	115.0	43.2	166.0	11.341	971.9	20	2.57	0.001	0.0	74.5
	115.0	42.8	160.9	11.225	967.3	128	6.11	0.009	0.7	74.9
	115.0	44.2	157.4	11.095	961.4	231	8.35	0.023	1.8	75.4
	115.0	45.9	155.1	10.945	952.4	324	9.69	0.037	2.9	75.7
	115.0	49.7	150.7	10.823	945.3	412	10.48	0.051	4.1	76.0
	115.0	56.2	149.7	10.682	941.5	494	11.74	0.069	5.5	76.6
	115.0	63.2	149.5	10.478	933.7	570	15.01	0.102	8.1	77.5
	115.0	71.0	149.4	10.234	921.8	640	17.99	0.137	11.1	78.3
	115.0	79.5	150.1	9.958	906.2	704	20.74	0.174	14.3	79.1
	115.0	89.3	151.7	9.646	887.5	765	23.70	0.216	18.1	80.0
	115.0	100.1	154.7	9.297	864.7	820	26.44	0.258	22.3	80.9
	115.0	112.0	159.4	8.919	839.0	870	28.59	0.296	26.3	81.8
	115.0	125.7	166.7	8.491	807.4	915	30.80	0.335	31.0	82.7
	115.0	140.0	175.7	8.033	772.1	956	32.88	0.374	36.2	83.6
	115.0	155.1	186.6	7.544	732.1	992	34.13	0.403	41.1	84.4
	115.0	172.5	201.1	6.973	683.6	1026	35.15	0.429	46.8	85.2
	115.0	189.5	216.5	6.417	632.8	1055	34.65	0.435	51.3	85.8
	115.0	207.8	234.6	5.794	572.8	1081	33.49	0.431	56.1	86.0
	115.0	225.5	252.8	5.180	512.8	1104	31.82	0.418	60.8	86.1
	115.0	242.8	271.6	4.584	450.0	1123	28.78	0.385	63.8	85.4
	115.0	258.4	289.0	4.040	391.4	1140	24.95	0.339	64.5	84.3
	115.0	272.9	306.2	3.528	331.6	1154	21.18	0.291	65.4	81.7
	115.0	286.3	322.4	3.067	275.1	1166	16.77	0.233	63.1	78.0
	115.0	296.9	336.0	2.707	227.8	1175	12.81	0.179	58.7	73.2
	115.0	304.5	347.2	2.444	191.3	1183	9.41	0.132	51.6	68.1
	115.0	313.1	361.0	2.206	157.1	1188	6.04	0.085	40.6	62.0
	115.0	319.6	371.1	2.090	134.5	1193	3.45	0.049	27.2	55.9
	115.0	325.2	379.2	2.026	112.7	1196	1.06	0.015	10.0	48.4
	115.0	327.2	381.9	2.011	104.0	1199	0.09	0.001	0.9	45.0
	115.0	327.5	382.2	2.010	103.2	1199	0.00	0.000	0.0	44.6

DRAWING NO. PAGE 7 of 18 REV.
 5RHT8BG -

Dayton Electric Mfg. Co. Lake Forest, IL 60045 USA

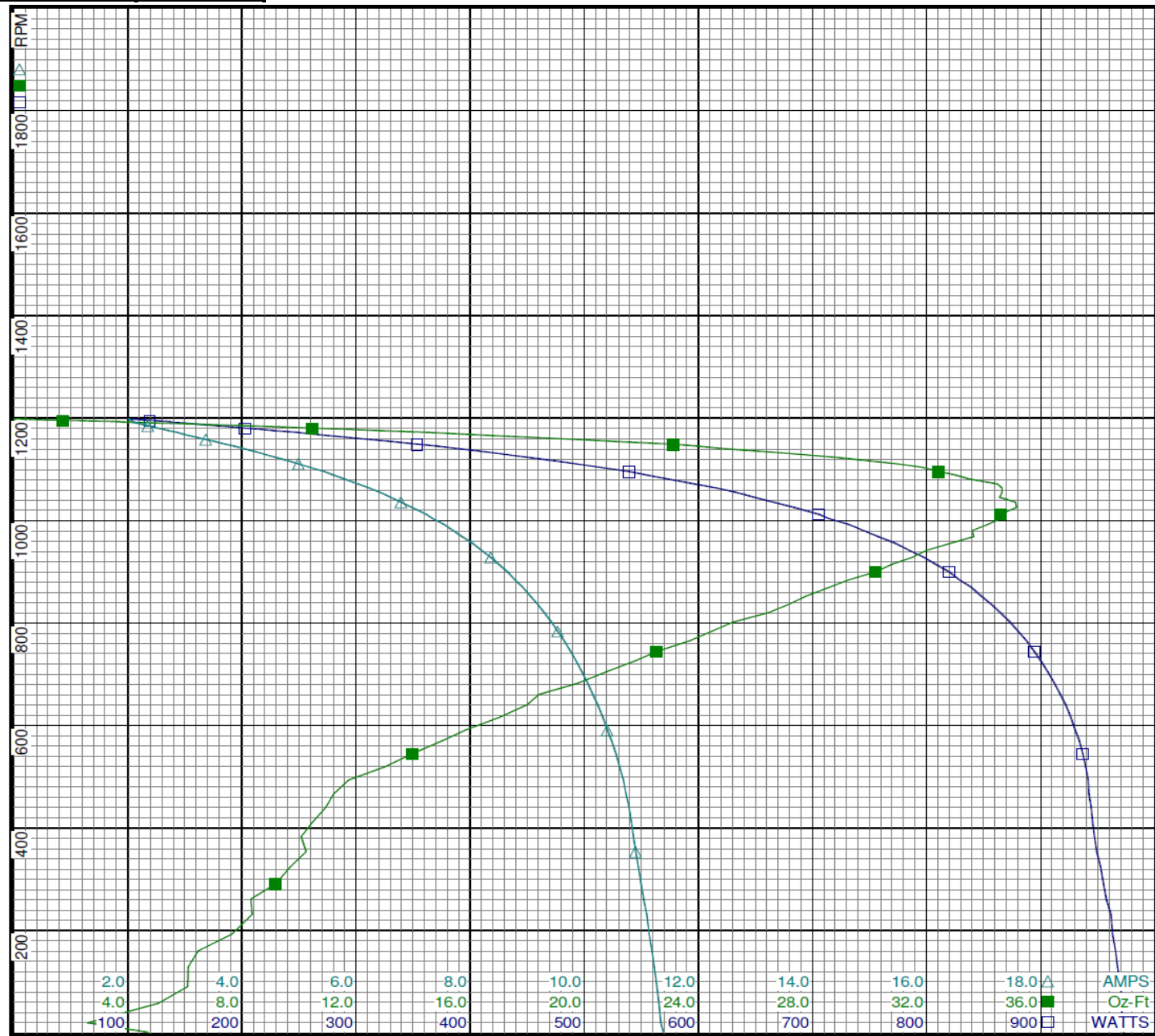
Performance Data



5RHT8BG

REV.

-



Curve Descriptions:

Motor(1) Test 11 Start 115V 60 Hz 6P
M2

- SPEED vs WATTS
- SPEED vs TORQUE
- △ SPEED vs IL

Motor Ratings:

(1) K055LPPF2523 ID: 1/1

2.0 4.0 6.0 8.0 10.0 12.0 14.0 16.0 18.0 △ AMPS
 4.0 8.0 12.0 16.0 20.0 24.0 28.0 32.0 36.0 ■ Oz-Ft
 100 200 300 400 500 600 700 800 900 □ WATTS

DRAWING NO.	PAGE 8 of 18	REV.
5RHT8BG		-

Dayton Electric Mfg. Co. Lake Forest, IL 60045 USA

Performance Data



5RHT8BG

REV.

-

Dayton Manufacturing Company

Motor Description

Model: K055LPF2523
 Motor ID: 1/1
 Poles: 6
 Volts: 115
 Frequency: 60
 HP: 3/4
 Speed: 1075
 Phase: 1
 Protector: 7AM036-A5

Test Conditions

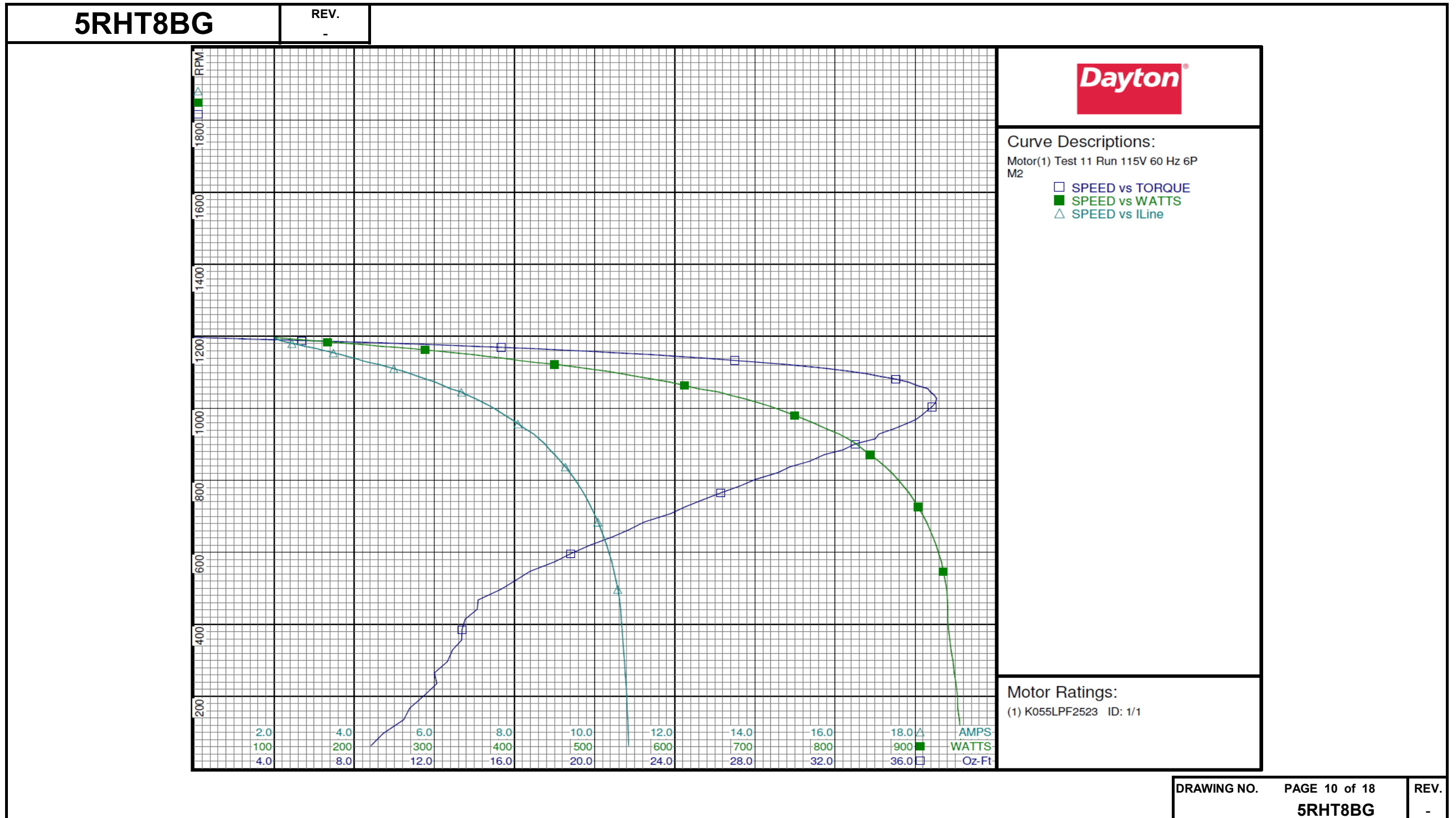
Test Type: Run
 Test Number: 11
 Poles: 6
 Volts: 115
 Hz: 60
 Rotation:
 Special Cond: M2
 Speed Conn:
 TestBoard: CMD InLine Three Phase #1 Fixture #1
 Run Cap: 0
 Start Cap: 0µfd
 Environment: 26.5 Deg C 51 % RH 958 hPa
 Tested: 8/12/2016 2:49:06 PM
 Tested By: Navarro, Susana
 Gear Ratio: 1:1
 Bearing Friction: -0.05 Oz-Ft
 Windage Torque: -0.41 Oz-Ft

Special Points	Vline (V)	Vaux (V)	Vcap (V)	Iline (A)	Watts	RPM	Tq(Oz-ft)	HP	Eff (%)	PF (%)
	115.0	326.6	381.1	2.019	100.5	1197	0.00	0.000	0.0	43.3
	115.0	325.4	379.1	2.027	108.8	1195	1.08	0.015	10.6	46.7
	115.0	319.6	370.9	2.093	132.4	1191	3.84	0.054	30.7	55.0
	115.0	312.9	360.4	2.215	157.3	1186	6.61	0.093	44.3	61.7
	115.0	305.0	347.4	2.445	190.6	1180	10.10	0.142	55.5	67.8
	115.0	296.0	334.2	2.764	234.3	1172	14.08	0.196	62.5	73.7
0.25 HP	115.0	284.8	319.9	3.160	285.5	1162	18.07	0.250	65.3	78.6
	115.0	284.1	319.0	3.183	288.5	1162	18.32	0.253	65.5	78.8
18.83 OZ-FT	115.0	282.7	317.3	3.235	295.1	1160	18.83	0.260	65.7	79.3
1155 RPM	115.0	277.1	310.4	3.435	319.4	1155	20.64	0.284	66.3	80.9
	115.0	270.8	302.7	3.664	347.6	1149	22.82	0.312	67.0	82.5
	115.0	256.6	286.3	4.177	405.5	1133	26.99	0.364	67.0	84.4
	115.0	240.4	267.9	4.776	469.4	1116	30.51	0.405	64.4	85.5
	115.0	222.9	249.0	5.403	534.0	1095	33.58	0.438	61.2	85.9
	115.0	205.7	231.0	6.024	594.5	1072	35.68	0.455	57.1	85.8
	115.0	187.1	213.0	6.677	654.8	1045	36.75	0.457	52.1	85.3
BDT OZ-FT	115.0	176.7	203.4	7.025	686.7	1026	37.07	0.453	49.2	85.0
	115.0	170.4	197.9	7.238	705.4	1014	37.01	0.447	47.3	84.8
	115.0	154.3	184.8	7.767	749.9	980	36.31	0.423	42.1	84.0
	115.0	138.9	173.7	8.263	789.2	943	34.93	0.392	37.1	83.1
	115.0	123.1	164.0	8.756	826.6	901	33.00	0.354	31.9	82.1
	115.0	110.2	157.7	9.144	854.3	853	30.74	0.312	27.3	81.2
	115.0	98.0	153.3	9.501	878.1	802	28.04	0.268	22.8	80.4
	115.0	87.3	150.7	9.812	897.9	746	25.41	0.226	18.7	79.6
	115.0	77.4	149.4	10.082	914.1	684	22.46	0.183	14.9	78.8
	115.0	69.1	149.1	10.297	926.1	619	19.76	0.146	11.7	78.2
	115.0	61.3	149.4	10.480	935.1	547	16.76	0.109	8.7	77.6
	115.0	54.1	149.7	10.619	940.1	467	14.18	0.079	6.3	77.0
	115.0	48.0	151.3	10.683	941.6	385	13.38	0.061	4.9	76.6
	115.0	44.9	154.7	10.742	947.2	296	12.64	0.045	3.5	76.7
	115.0	43.4	158.0	10.801	952.7	200	11.45	0.027	2.1	76.7
	115.0	42.5	161.5	10.838	956.1	97	9.43	0.011	0.8	76.7

DRAWING NO. PAGE 9 of 18 REV.
5RHT8BG -

Dayton Electric Mfg. Co. Lake Forest, IL 60045 USA

Performance Data



Dayton Electric Mfg. Co. Lake Forest, IL 60045 USA

Performance Data



5RHT8BG

REV.

-

Dayton Manufacturing Company

Motor Description

Model: K055LPF2523
 Motor ID: 1/1
 Poles: 6
 Volts: 115
 Frequency: 60
 HP: 3/4
 Speed: 1075
 Phase: 1
 Protector: 7AM036-A5

Test Conditions

Test Type: Start
 Test Number: 13
 Poles: 6
 Volts: 115
 Hz: 60
 Rotation:
 Special Cond: M3
 Speed Conn:
 TestBoard: CMD InLine Three Phase #2 Fixture #1
 Run Cap: 0
 Start Cap: 0µfd
 Environment: 23.3 Deg C 55 % RH 967 hPa
 Tested: 9/26/2016 12:03:15 PM
 Tested By: Navarro, Susana
 Gear Ratio: 1:1
 Bearing Friction: -0.11 Oz-Ft
 Windage Torque: -0.60 Oz-Ft

Special Points	Vline (V)	Vaux (V)	Vcap (V)	Iline (A)	Watts	RPM	Tq(Oz-ft)	HP	Eff (%)	PF (%)
	115.0	41.0	153.3	7.980	718.3	23	2.82	0.001	0.1	78.3
PUT OZ-FT	115.0	41.2	152.6	7.959	717.9	58	2.26	0.002	0.2	78.4
	115.0	41.3	150.3	7.909	715.2	131	4.09	0.006	0.7	78.6
	115.0	41.8	147.2	7.811	709.1	232	5.71	0.016	1.7	78.9
	115.0	42.8	144.5	7.703	701.2	325	6.45	0.025	2.7	79.1
	115.0	45.7	142.1	7.621	696.1	413	7.10	0.035	3.7	79.4
	115.0	51.1	142.1	7.525	693.2	496	7.91	0.047	5.0	80.1
	115.0	57.2	142.5	7.386	686.7	572	10.13	0.069	7.5	80.8
	115.0	63.2	142.6	7.223	677.5	642	12.10	0.092	10.2	81.6
	115.0	70.3	143.2	7.039	665.7	707	14.01	0.118	13.2	82.2
	115.0	77.7	144.2	6.833	651.9	767	15.88	0.145	16.6	83.0
	115.0	86.7	146.5	6.598	634.9	821	18.14	0.177	20.8	83.7
	115.0	96.4	149.8	6.343	616.0	871	19.37	0.201	24.3	84.4
	115.0	107.6	155.2	6.060	593.5	916	21.06	0.230	28.9	85.2
	115.0	119.5	161.7	5.760	569.1	956	22.78	0.259	34.0	85.9
	115.0	132.7	170.6	5.418	539.3	993	23.47	0.277	38.4	86.6
	115.0	147.4	181.7	5.037	505.0	1026	24.31	0.297	43.9	87.2
	115.0	162.2	194.1	4.655	469.5	1055	24.35	0.306	48.6	87.7
	115.0	178.7	209.4	4.231	427.2	1082	23.84	0.307	53.6	87.8
	115.0	195.1	225.5	3.787	382.4	1104	22.82	0.300	58.5	87.8
	115.0	210.4	241.0	3.389	340.1	1123	20.88	0.279	61.3	87.3
	115.0	225.1	257.0	2.993	296.6	1140	18.28	0.248	62.4	86.2
	115.0	239.4	273.0	2.622	252.7	1154	15.84	0.218	64.2	83.8
	115.0	252.1	287.7	2.292	212.4	1166	12.58	0.175	61.3	80.6
	115.0	262.7	300.5	2.023	177.1	1175	9.63	0.135	56.8	76.1
	115.0	270.9	311.5	1.825	150.4	1183	7.18	0.101	50.2	71.6
	115.0	281.5	327.2	1.632	125.1	1188	4.61	0.065	38.9	66.7
	115.0	289.0	338.1	1.532	108.4	1193	2.56	0.036	25.0	61.5
	115.0	295.5	346.8	1.469	90.3	1197	0.76	0.011	8.9	53.5
	115.0	296.4	348.1	1.454	85.3	1199	0.28	0.004	3.5	51.0
	115.0	296.9	348.7	1.450	83.4	1199	0.00	0.000	0.0	50.0

DRAWING NO. PAGE 11 of 18 REV.
5RHT8BG -

Dayton Electric Mfg. Co. Lake Forest, IL 60045 USA

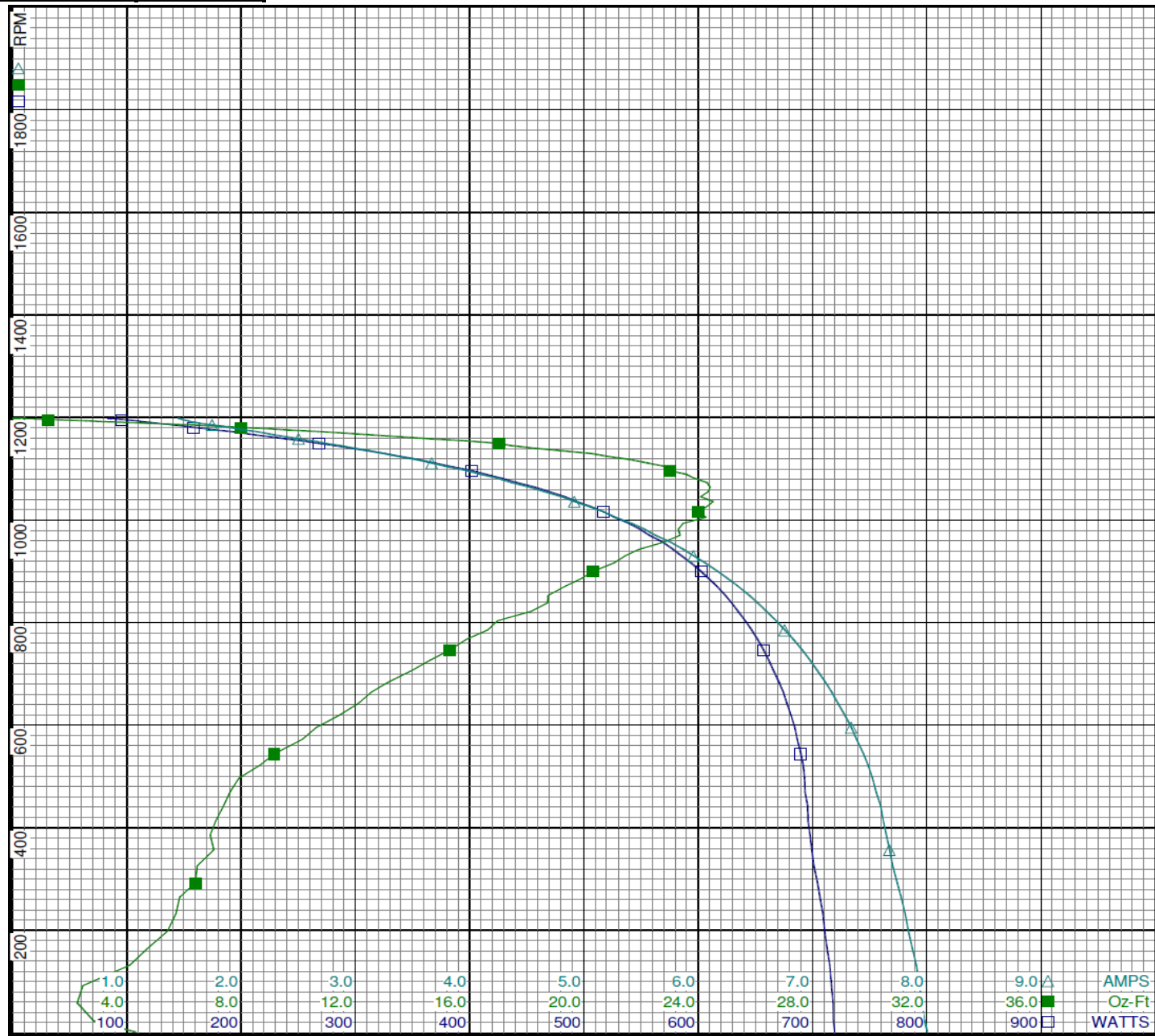
Performance Data



5RHT8BG

REV.

-



Curve Descriptions:

Motor(1) Test 13 Start 115V 60 Hz 6P
M3

- SPEED vs WATTS
- SPEED vs TORQUE
- △ SPEED vs ILine

Motor Ratings:

(1) K055LPPF2523 ID: 1/1

DRAWING NO.	PAGE 12 of 18	REV.
5RHT8BG		-

Dayton Electric Mfg. Co. Lake Forest, IL 60045 USA

Performance Data



5RHT8BG

REV.

-

Dayton Manufacturing Company

Motor Description

Model: K055LPF2523
 Motor ID: 1/1
 Poles: 6
 Volts: 115
 Frequency: 60
 HP: 3/4
 Speed: 1075
 Phase: 1
 Protector: 7AM036-A5

Test Conditions

Test Type: Run
 Test Number: 12
 Poles: 6
 Volts: 115
 Hz: 60
 Rotation:
 Special Cond: M3
 Speed Conn:
 TestBoard: CMD InLine Three Phase #1 Fixture #1
 Run Cap: 0
 Start Cap: 0µfd
 Environment: 26.5 Deg C 51 % RH 958 hPa
 Tested: 8/12/2016 2:53:09 PM
 Tested By: Navarro, Susana
 Gear Ratio: 1:1
 Bearing Friction: -0.08 Oz-Ft
 Windage Torque: -0.43 Oz-Ft

Special Points	Vline (V)	Vaux (V)	Vcap (V)	Iline (A)	Watts	RPM	Tq(Oz-ft)	HP	Eff (%)	PF (%)
	115.0	295.8	347.0	1.464	83.4	1196	0.00	0.000	0.0	49.6
	115.0	294.6	345.2	1.475	89.0	1195	0.68	0.010	8.1	52.5
	115.0	288.5	336.8	1.536	107.2	1191	2.97	0.042	29.3	60.7
	115.0	281.2	326.3	1.631	123.8	1186	4.98	0.070	42.4	66.0
	115.0	271.2	311.1	1.836	151.1	1180	7.79	0.109	54.0	71.6
	115.0	261.4	297.9	2.083	183.9	1172	10.72	0.150	60.7	76.7
	115.0	249.8	283.7	2.394	224.1	1161	13.95	0.193	64.2	81.4
0.2 HP	115.0	247.5	281.2	2.456	231.2	1159	14.49	0.200	64.5	81.8
15.17 OZ-FT	115.0	244.8	277.9	2.530	240.4	1157	15.17	0.209	64.8	82.6
	115.0	240.3	273.0	2.650	253.4	1154	15.51	0.213	62.8	83.1
1150 RPM	115.0	239.8	272.2	2.666	257.5	1150	16.61	0.227	65.8	84.0
0.25 HP	115.0	230.8	262.4	2.911	284.5	1141	18.40	0.250	65.6	85.0
18.42 OZ-FT	115.0	230.6	262.3	2.915	284.9	1141	18.42	0.250	65.6	85.0
1135 RPM	115.0	224.5	255.2	3.086	305.0	1135	19.65	0.266	65.0	85.9
	115.0	223.0	253.5	3.127	309.9	1133	19.98	0.270	64.9	86.2
	115.0	208.7	238.2	3.524	353.0	1117	22.32	0.297	62.7	87.1
	115.0	192.3	221.2	3.975	400.5	1095	24.40	0.318	59.2	87.6
	115.0	177.0	206.2	4.402	443.2	1073	25.60	0.327	55.0	87.5
	115.0	161.0	191.7	4.830	484.5	1045	26.23	0.326	50.2	87.2
BDT OZ-FT	115.0	145.8	178.8	5.232	522.2	1015	26.32	0.318	45.4	86.8
	115.0	145.8	178.8	5.232	522.2	1015	26.32	0.318	45.4	86.8
	115.0	131.0	167.8	5.617	556.0	980	25.62	0.299	40.1	86.1
	115.0	117.5	159.1	5.956	584.7	943	24.50	0.275	35.1	85.4
	115.0	105.0	152.4	6.266	609.7	901	22.87	0.245	30.0	84.6
	115.0	93.5	147.5	6.541	631.0	853	21.45	0.218	25.8	83.9
	115.0	83.6	144.5	6.773	647.9	803	19.13	0.183	21.0	83.2
	115.0	75.0	143.0	6.975	662.3	747	17.68	0.157	17.7	82.6
	115.0	67.5	142.2	7.144	673.8	685	15.71	0.128	14.2	82.0
	115.0	60.5	142.1	7.285	682.7	619	13.81	0.102	11.1	81.5
	115.0	54.5	142.0	7.398	689.1	548	11.95	0.078	8.4	81.0
	115.0	48.9	142.0	7.479	692.4	469	10.08	0.056	6.1	80.5
	115.0	44.0	142.7	7.511	692.8	385	9.74	0.045	4.8	80.2
	115.0	42.0	145.3	7.547	696.8	297	9.76	0.034	3.7	80.3
	115.0	41.0	148.0	7.587	700.8	201	8.48	0.020	2.2	80.3
	115.0	40.7	150.8	7.610	703.5	99	7.95	0.009	1.0	80.4

DRAWING NO. PAGE 13 of 18 REV.
5RHT8BG -

Dayton Electric Mfg. Co. Lake Forest, IL 60045 USA

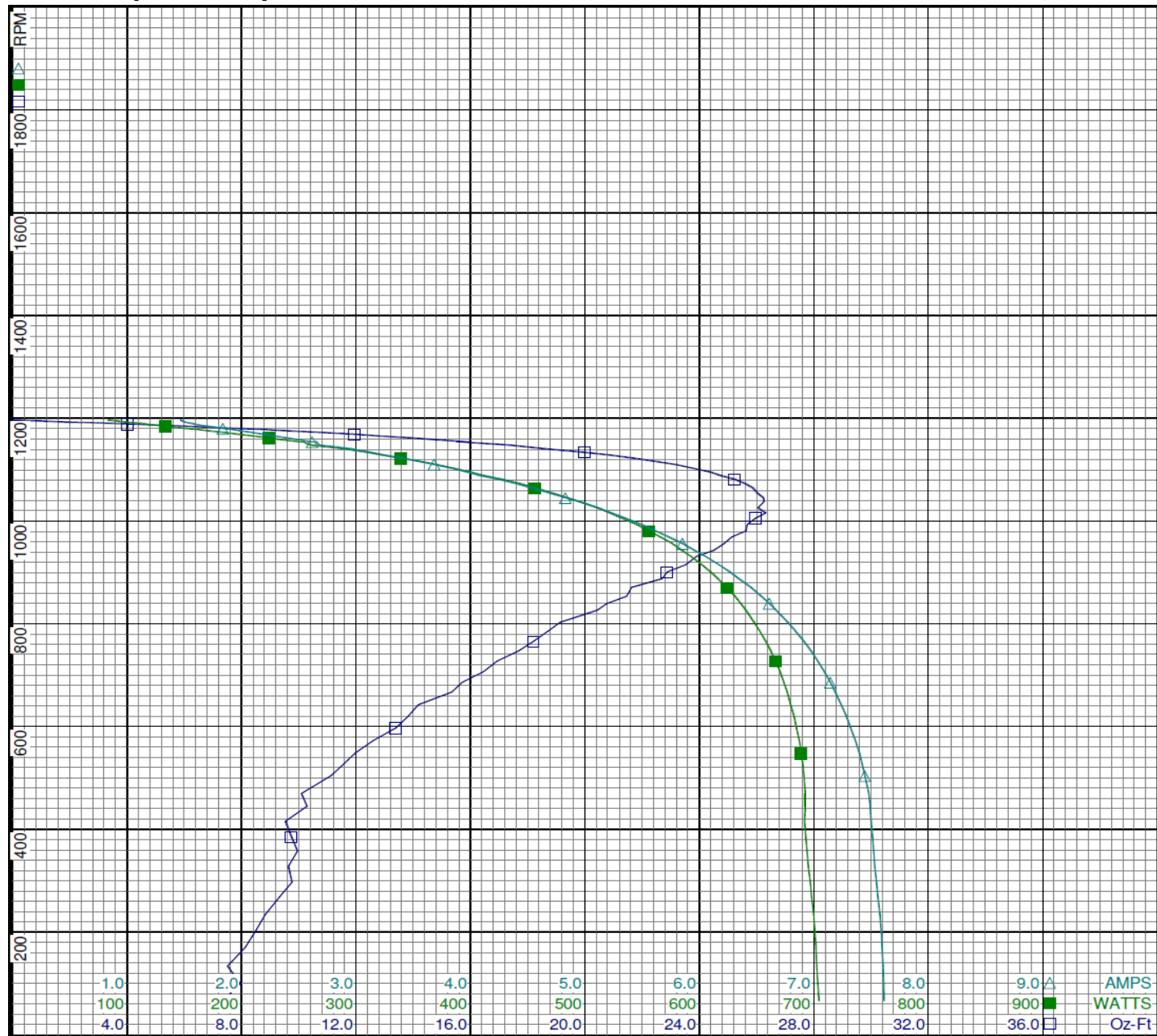
Performance Data



5RHT8BG

REV.

-



Curve Descriptions:

Motor(1) Test 12 Run 115V 60 Hz 6P M3

- SPEED vs TORQUE
- SPEED vs WATTS
- △ SPEED vs ILine

Motor Ratings:

(1) K055LPP2523 ID: 1/1

DRAWING NO.	PAGE 14 of 18	REV.
5RHT8BG		-

Dayton Electric Mfg. Co. Lake Forest, IL 60045 USA

Performance Data



5RHT8BG

REV.

-

Dayton Manufacturing Company

Motor Description

Model: K055LPF2523
 Motor ID: 1/1
 Poles: 6
 Volts: 115
 Frequency: 60
 HP: 3/4
 Speed: 1075
 Phase: 1
 Protector: 7AM036-A5

Test Conditions

Test Type: Start
 Test Number: 15
 Poles: 6
 Volts: 115
 Hz: 60
 Rotation:
 Special Cond: M4
 Speed Conn:
 TestBoard: CMD InLine Three Phase #2 Fixture #1
 Run Cap: 0
 Start Cap: 0µfd
 Environment: 23.3 Deg C 55 % RH 967 hPa
 Tested: 9/26/2016 12:07:13 PM
 Tested By: Navarro, Susana
 Gear Ratio: 1:1
 Bearing Friction: -0.11 Oz-Ft
 Windage Torque: -0.61 Oz-Ft

Special Points	Vline (V)	Vaux (V)	Vcap (V)	Iline (A)	Watts	RPM	Tq (Oz-ft)	HP	Eff (%)	PF (%)
PUT OZ-FT	115.0	40.0	145.3	6.038	556.1	22	0.779	0.000	0.0	80.1
	115.0	40.0	145.3	6.038	556.1	22	0.779	0.000	0.0	80.1
	115.0	40.0	142.2	5.978	551.7	128	3.448	0.005	0.7	80.3
	115.0	40.4	139.7	5.912	547.6	231	3.932	0.011	1.5	80.5
	115.0	41.2	138.0	5.827	540.9	324	4.912	0.019	2.6	80.7
	115.0	43.4	135.6	5.768	537.2	411	5.218	0.026	3.5	81.0
	115.0	48.2	136.1	5.703	535.3	496	5.979	0.035	4.9	81.6
	115.0	53.0	136.5	5.606	530.5	569	7.110	0.048	6.8	82.3
	115.0	58.5	136.7	5.485	523.3	643	9.196	0.070	10.0	83.0
	115.0	64.3	137.3	5.357	514.7	704	10.168	0.085	12.3	83.6
	115.0	71.0	138.2	5.199	503.8	766	11.883	0.108	16.0	84.3
	115.0	78.2	139.7	5.026	490.8	820	13.288	0.130	19.7	84.9
	115.0	86.9	142.5	4.837	475.8	871	15.074	0.156	24.5	85.5
	115.0	96.4	146.6	4.629	459.0	914	15.674	0.171	27.7	86.2
	115.0	107.1	152.2	4.396	439.5	956	17.036	0.194	32.9	86.9
	115.0	118.8	159.4	4.142	417.0	992	17.867	0.211	37.8	87.5
	115.0	131.5	168.5	3.872	392.2	1025	18.430	0.225	42.8	88.1
	115.0	145.0	179.3	3.579	364.1	1055	18.604	0.234	47.9	88.5
	115.0	160.0	192.7	3.248	330.9	1082	18.271	0.235	53.0	88.6
	115.0	174.1	205.8	2.934	299.0	1104	17.645	0.232	57.8	88.6
	115.0	188.6	220.1	2.618	265.0	1123	16.192	0.217	61.0	88.0
	115.0	202.4	234.5	2.311	230.9	1140	14.121	0.192	61.9	86.9
	115.0	214.4	247.6	2.049	199.9	1154	12.436	0.171	63.7	84.8
	115.0	226.4	260.9	1.789	168.0	1166	9.842	0.137	60.6	81.7
	115.0	236.5	273.0	1.583	141.2	1175	7.609	0.106	56.3	77.5
	115.0	244.7	283.7	1.427	120.4	1183	5.739	0.081	50.0	73.4
	115.0	255.9	299.5	1.270	101.0	1189	3.668	0.052	38.3	69.2
	115.0	263.6	310.1	1.184	87.9	1193	1.927	0.027	23.2	64.6
	115.0	269.8	318.2	1.131	75.2	1197	0.596	0.008	8.4	57.8
	115.0	271.0	319.9	1.118	71.2	1198	0.257	0.004	3.8	55.4
	115.0	271.2	320.2	1.113	69.1	1199	0.000	0.000	0.0	54.0

DRAWING NO. PAGE 15 of 18 REV.
5RHT8BG -

Dayton Electric Mfg. Co. Lake Forest, IL 60045 USA

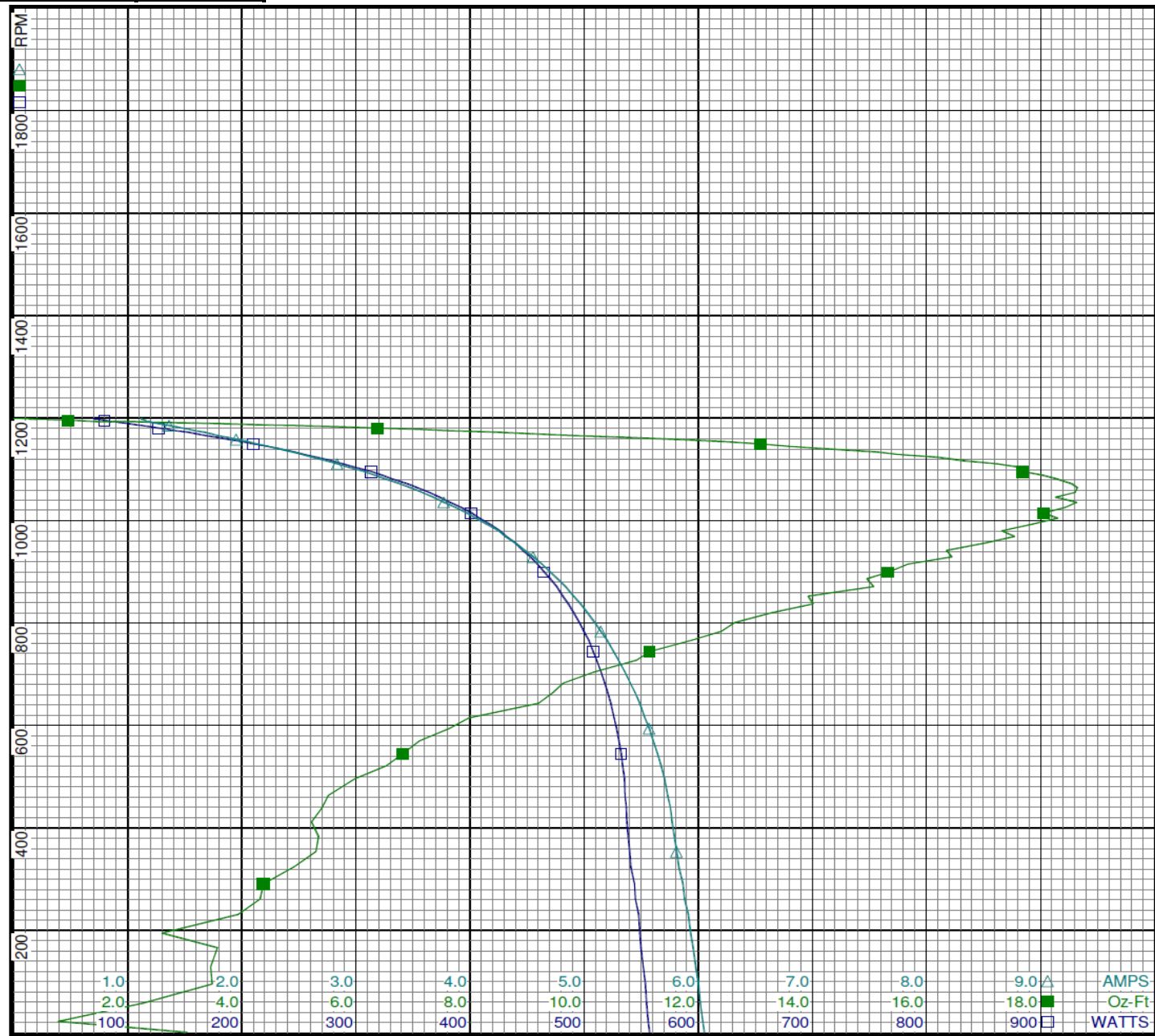
Performance Data



5RHT8BG

REV.

-



Curve Descriptions:

Motor(1) Test 15 Start 115V 60 Hz 6P
M4

- SPEED vs WATTS
- SPEED vs TORQUE
- △ SPEED vs ILine

Motor Ratings:

(1) K055LPPF2523 ID: 1/1

DRAWING NO.	PAGE 16 of 18	REV.
5RHT8BG		-

Dayton Electric Mfg. Co. Lake Forest, IL 60045 USA

Performance Data



5RHT8BG

REV.

-

Dayton Manufacturing Company

Motor Description

Model: K055LPF2523
 Motor ID: 1/1
 Poles: 6
 Volts: 115
 Frequency: 60
 HP: 3/4
 Speed: 1075
 Phase: 1
 Protector: 7AM036-A5

Test Conditions

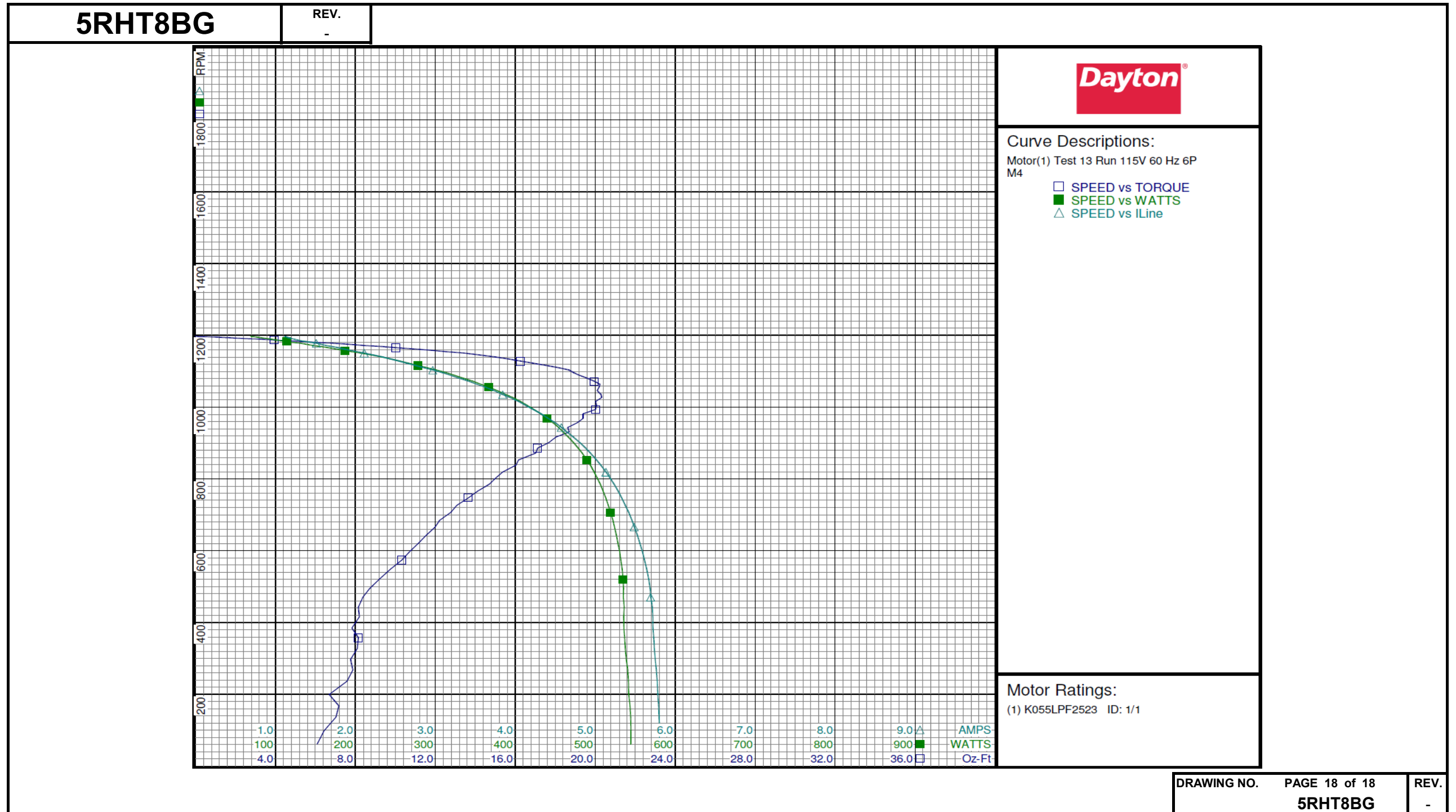
Test Type: Run
 Test Number: 13
 Poles: 6
 Volts: 115
 Hz: 60
 Rotation:
 Special Cond: M4
 Speed Conn:
 TestBoard: CMD InLine Three Phase #1 Fixture #1
 Run Cap: 0
 Start Cap: 0µfd
 Environment: 26.5 Deg C 51 % RH 958 hPa
 Tested: 8/12/2016 2:54:43 PM
 Tested By: Navarro, Susana
 Gear Ratio: 1:1
 Bearing Friction: -0.09 Oz-Ft
 Windage Torque: -0.27 Oz-Ft

Special Points	Vline (V)	Vaux (V)	Vcap (V)	Iline (A)	Watts	RPM	Tq(Oz-ft)	HP	Eff (%)	PF (%)
	115.0	270.0	318.4	1.121	68.8	1197	0.00	0.000	0.0	53.4
	115.0	267.4	314.8	1.144	77.0	1194	1.09	0.016	15.1	58.5
	115.0	261.1	306.3	1.209	91.1	1190	2.70	0.038	31.3	65.5
	115.0	251.4	292.3	1.322	106.9	1184	4.54	0.064	44.7	70.3
	115.0	240.9	277.3	1.512	131.2	1178	6.87	0.096	54.8	75.5
	115.0	231.9	266.3	1.704	156.4	1168	9.28	0.129	61.6	79.8
	115.0	220.5	253.4	1.952	187.2	1157	11.92	0.164	65.5	83.4
	115.0	208.7	240.2	2.223	219.2	1145	14.19	0.193	65.8	85.8
0.2 HP	115.0	205.3	236.4	2.301	228.4	1141	14.72	0.200	65.3	86.3
14.84 OZ-FT	115.0	204.6	235.6	2.318	230.4	1140	14.84	0.201	65.2	86.4
1131 RPM	115.0	197.3	227.9	2.486	249.3	1131	15.93	0.214	64.2	87.2
	115.0	194.9	225.3	2.543	255.7	1128	16.26	0.218	63.7	87.4
	115.0	181.3	211.5	2.855	289.3	1109	18.17	0.240	61.9	88.1
18.6 OZ-FT	115.0	177.3	207.5	2.951	299.0	1104	18.60	0.244	61.0	88.1
1095 RPM	115.0	170.9	201.2	3.099	314.5	1095	18.95	0.247	58.6	88.3
	115.0	167.4	197.9	3.177	322.5	1089	19.15	0.248	57.5	88.3
0.25 HP	115.0	165.1	195.8	3.229	327.9	1085	19.35	0.250	56.9	88.3
	115.0	152.6	184.3	3.518	356.8	1063	20.22	0.256	53.5	88.2
	115.0	138.1	172.0	3.844	388.2	1035	20.29	0.250	48.0	87.8
BDT OZ-FT	115.0	134.2	168.9	3.932	396.6	1026	20.32	0.248	46.7	87.7
	115.0	125.2	162.1	4.130	414.8	1004	20.06	0.240	43.1	87.3
	115.0	112.4	153.6	4.409	439.6	968	19.39	0.224	37.9	86.7
	115.0	101.4	147.4	4.645	459.8	931	18.69	0.207	33.6	86.1
	115.0	90.5	142.5	4.877	478.6	885	17.11	0.180	28.1	85.3
	115.0	81.4	139.4	5.069	493.7	838	16.03	0.160	24.2	84.7
	115.0	73.4	137.6	5.236	506.2	785	14.69	0.137	20.2	84.1
	115.0	66.4	136.8	5.377	516.2	726	13.07	0.113	16.3	83.5
	115.0	60.5	136.5	5.489	524.0	666	11.98	0.095	13.5	83.0
	115.0	54.9	136.4	5.590	530.5	596	10.69	0.076	10.7	82.5
	115.0	49.7	136.3	5.667	534.7	520	9.20	0.057	7.9	82.0
	115.0	45.1	136.0	5.711	536.0	442	8.14	0.043	6.0	81.6
	115.0	41.8	137.0	5.730	536.7	357	8.15	0.035	4.8	81.4
	115.0	40.8	139.6	5.763	540.5	267	7.87	0.025	3.5	81.6
	115.0	40.3	141.4	5.793	543.4	167	7.17	0.014	2.0	81.6
	115.0	40.4	144.3	5.803	544.8	61	6.08	0.004	0.6	81.6

DRAWING NO. PAGE 17 of 18 REV.
5RHT8BG -

Dayton Electric Mfg. Co. Lake Forest, IL 60045 USA

Performance Data

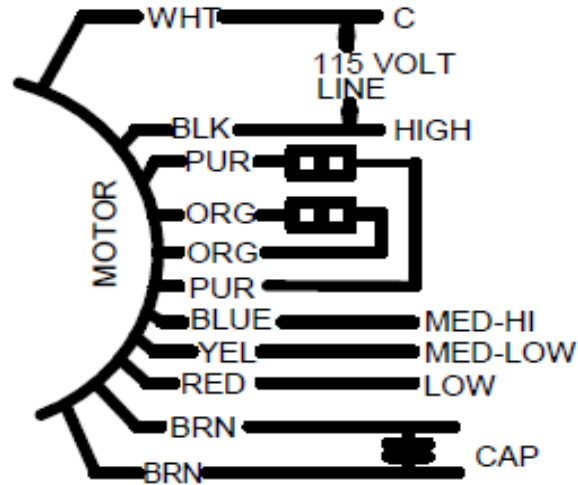


Dayton Electric Mfg. Co. Lake Forest, IL 60045 USA

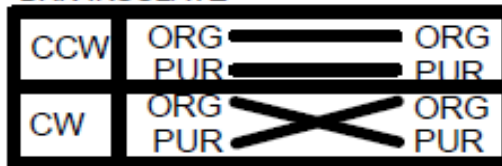
Wiring Diagram



5RHT8BG	REV. -
----------------	-----------



OPTION .3 WIRE
 CONNECTION
 BRN INSULATE



BLACK-L1

DRAWING NO.	PAGE 1 of 1	REV.
5RHT8BG		-

Dayton Electric Mfg. Co. Lake Forest, IL 60045 USA

Dayton®

DIRECT DRIVE BLOWER MOTOR

HP: SEE TABLE VOLTS: 115 HZ: 60 PH: 1 SF: 1.0

RPM: 1075 (4SPEED) INS CL: B AMPS: 8.7-2.4 SFA: 8.7-2.4

ENCL: OAO DUTY: CONT AMB: 60°C

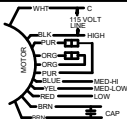
FR: 48YZ MFG. NO. PROT. CODE: 7A010 AVG. F.L. EFF.

MTR REF: K55HXLPF-2523 THERMALLY PROTECTED: AUTO

ROTATION: CCW Lead End Rev CAPACITOR: See Table Below



Part No: 5RHT8BG



OPTION 3 WIRE CONNECTION
BRN INSULATE



BLACK-L1



E37403



258501

MOTOR	CAP MFD/370V 115V	SPEED TO USE	FLA
3/4 HP	10	HIGH (1085 RPM)	8.7
1/2 HP	10	HIGH (1140 RPM)	5.9
1/3 HP	7.5	HIGH (1160 RMP)	4.6
1/4 HP	7.5	Med-Hi: (1155 RMP)	3.4
		Med-Lo: (1135 RMP)	3.1
		LO: (1095 RMP)	3.0
1/5 HP	7.5	Med-Lo: (1150 RMP)	2.6
		LO: (1131 RMP)	2.4

Mfd for Dayton Electric Mfg. Co., Lake Forest, IL 60045 USA

Made in Mexico