

Dayton®

REV.

CONNECTION INFORMATION

HIGH VOLTAGE	LOW VOLTAGE
P1 — L1	P1 — L1
P0 — INBL.	P0 — INBL.
T8 — INBL.	T8 — INBL.
T2 — INBL.	T2 — INBL.
T6 — L2	T6 — L2
T4 —	T4 —

ROTATION: CCW L.E.
TO REVERSE ROTATION: INTERCHANGE LEADS T5 AND T8

Dimensions:

- A ± .060
- 9.96
- .88
- .50 REF
- 1.75 ± .047
- 1.56
- 1.25
- .004 A
- .445
- .460
- .5000
- .4995
- 6.375 DIA
- 6.75 DIA
- 6.83 DIA
- .880 DIA. KNOCKOUT
- NAMEPLATE
- TOP
- .344 DIA. SLOT
- 3.00
- 2.75
- 1.250
- WARNING LABEL
- GROUND SCREW
- SHAFT GUARD SNAPPED INTO FANGUARD
- WATER SLINGER
- MANUAL RESET PROTECTOR
- 2.410
- 4.91
- 45°
- 8.65
- 3.500 +.000 / -.060
- 2.44
- 2.44
- FROM CENTERS OF .344 DIA SLOTS
- 6.50
- .344 DIA 2-REQ'D ON A 7.250 B.C.
- .880 & 1.120 DIA. KNOCKOUTS 1-REQ'D TOP & BOTTOM
- A-
- .006 A

SLOT DETAIL (4)

©2019 W.W. Grainger, Inc. This design may not be reproduced, modified or redistributed without written permission from W.W. Grainger, Inc.

Performance Data



5K046BG

REV.
-

MOTOR PERFORMANCE

HP:	3/4							
Poles:	4							
No. of Speeds:	1							
Volts:	115/230	115	230					
HZ:	60/50	60	60					
Service Factor:	1							
Efficiency:	@ Rated Load	67.1	67.2					
Power Factor:	@ Rated Load	74.8	74.6					
Amps:	@ No Load							
	@ Rated Load	9.7	4.85					
	@ Service Factor	-	-					
	@ Locked Rotor	57.96	28.5					
RPM:	@ Rated Load	1727	1727					
Ambient (°C):	40							
Altitude (FASL):								
Torques:	Breakdown	78.6	78.1					
	Locked Rotor	159.3	135.2					
	Pull-Up	34.7	37.1					
	Rated Load	36.47	36.5					
	Service Factor	-	-					
Watts:	Rated Load	833	833					
KVA Code:	A							
Temperature Rise:	@ Rated Load	66.2	64.3					
	@ Service Factor	N/A	N/A					
Thermal Protector:	Trip Temp (°C)	158.2	170.8					
Winding Material:	Start (Auxiliary)	Cu	Cu					
	Run (Main)	Cu	Cu					
Capacitor(s):	Start (MFD / Volts)	709.5 mFd, 125V						
	No. of Start Capacitors							
	Run (MFD / Volts)	N/A						
	No. of Run Capacitors							

LOW SPEED PERFORMANCE DATA:

HP:								
Poles:								
Volts:								
HZ:								
Efficiency:	@ Rated Load							
Power Factor:	@ Rated Load							
Amps:	@ No Load							
	@ Rated Load							
	@ Service Factor							
	@ Locked Rotor							
Torques:	Bead Down							
	Locked Rotor							
	Pull-Up							
	Rated Load							
	Service Factor							
Watts:	@ Rated Load							
Temperature Rise:	@ Rated Load							
	@ Service Factor							

DRAWING NO. PAGE 1 of 1 REV.
5K046BG -

Dayton Electric Mfg. Co. Lake Forest, IL 60045 USA

Performance Data



5K046BG		REV. -						
Dayton Manufacturing Company								
Motor Description				Test Conditions				
Model:	C063GJK131801 5K046BG			Test Type:	Start	Run Cap:	0	
Motor ID:	1			Test Number:	20	Start Cap:	709µfd	
Poles:	4			Poles:	4	Environment:	20.6 Deg C 15 % RH 1001 hPa	
Volts:	115/230			Volts:	115	Tested:	3/20/2013 1:56:14 PM	
Frequency:	60/50			Hz:	60	Tested By:	Sharp, Gerald	
HP:	3/4			Rotation:	CCW	Gear Ratio:	1:1	
Speed:	1725/1425			Special Cond:	2-Line st thru sw for PUT			
Phase:	1			Speed Conn:	Bearing Friction: -0.61 Oz-Ft			
Protector:	CED3723			TestBoard:	Windage Torque: -1.60 Oz-Ft			
					Amps Performance	Fixture #3		
Special Points	Vline(V)	Iline(A)	Watts	RPM	Tq(Oz-ft)	HP	Eff(%)	PF(%)
	115.0	57.96	6254	18	159.34	0.034	0.4	93.8
	115.0	57.90	6246	44	161.63	0.084	1.0	93.8
	115.0	57.49	6209	191	159.73	0.363	4.4	93.9
	115.0	56.96	6161	345	158.83	0.652	7.9	94.1
	115.0	56.39	6108	484	158.57	0.913	11.1	94.2
	115.0	56.20	6081	611	160.39	1.166	14.3	94.1
	115.0	56.74	6155	727	161.43	1.397	16.9	94.3
	115.0	56.83	6198	832	164.19	1.626	19.6	94.8
	115.0	56.63	6198	927	163.04	1.799	21.7	95.2
	115.0	47.90	4823	1007	91.47	1.096	17.0	87.5
PUT OZ-FT	115.0	36.31	3126	1020	34.69	0.421	10.1	74.9
	115.0	36.97	3258	1066	51.23	0.650	14.9	76.6
	115.0	34.90	3111	1151	57.41	0.787	18.9	77.5
	115.0	33.06	2994	1229	64.00	0.937	23.3	78.7
	115.0	31.21	2869	1297	69.50	1.073	27.9	79.9
	115.0	29.33	2732	1356	72.71	1.174	32.1	81.0
	115.0	27.46	2586	1409	75.39	1.265	36.5	81.9
	115.0	25.57	2432	1456	76.11	1.320	40.5	82.7
	115.0	23.69	2270	1498	76.00	1.356	44.5	83.3
	115.0	21.77	2100	1537	74.81	1.369	48.6	83.9
	115.0	19.95	1931	1572	72.16	1.350	52.2	84.1
	115.0	18.17	1759	1602	68.25	1.302	55.2	84.2
	115.0	16.39	1577	1632	63.83	1.240	58.7	83.7
	115.0	14.66	1395	1658	58.13	1.147	61.4	82.8
	115.0	13.04	1217	1682	51.94	1.040	63.7	81.2
	115.0	11.45	1033	1706	44.60	0.906	65.4	78.4
	115.0	10.03	860	1727	37.10	0.763	66.2	74.5
	115.0	8.68	684	1746	28.76	0.598	65.3	68.5
	115.0	7.58	506	1767	19.59	0.412	60.7	58.0
	115.0	6.72	309	1787	8.46	0.180	43.5	40.0
	115.0	6.39	158	1802	0.00	0.000	0.0	21.5

DRAWING NO. PAGE 1 of 8

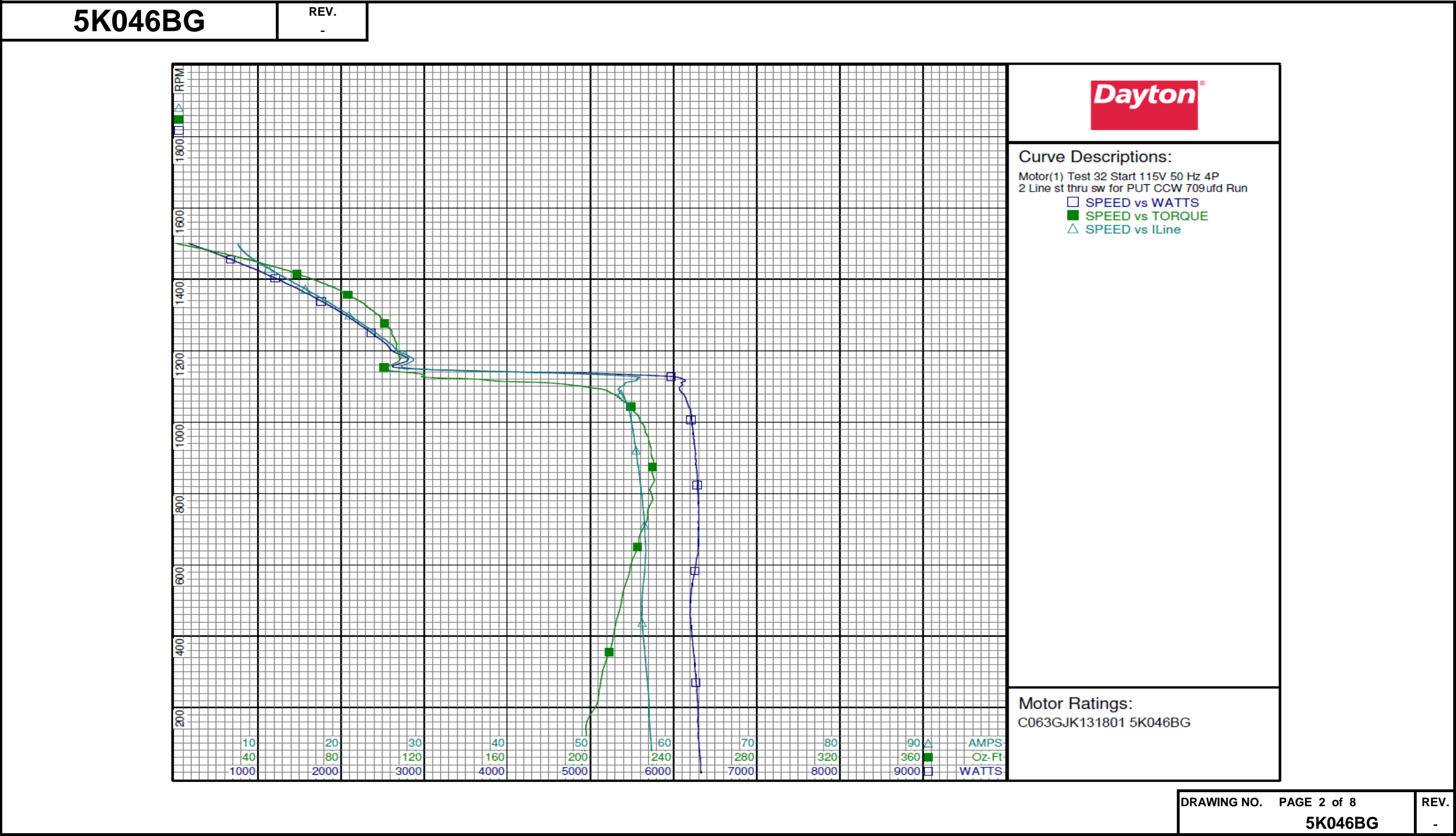
5K046BG

REV.
-

DRAWING NO.	PAGE 1 of 8	REV.
	5K046BG	-

Dayton Electric Mfg. Co. Lake Forest, IL 60045 USA

Performance Data



Dayton Electric Mfg. Co. Lake Forest, IL 60045 USA

Performance Data



5K046BG		REV. -							
Dayton Manufacturing Company									
Motor Description				Test Conditions					
Model:		C063GJK131801 5K046BG		Test Type:		Run		Run Cap: 0	
Motor ID:		1		Test Number:		21		Start Cap: 709µfd	
Poles:		4		Poles:		4		Environment: 20.6 Deg C 15 % RH 1001 hPa	
Volts:		115/230		Volts:		115		Tested: 3/20/2013 1:31:44 PM	
Frequency:		60/50		Hz:		60		Tested By: Sharp, Gerald	
HP:		3/4		Rotation:		CCW		Gear Ratio: 1:1	
Speed:		1725/1425		Special Cond:				Bearing Friction: -0.62 Oz-Ft	
Phase:		1		Speed Conn:				Windage Torque: -1.66 Oz-Ft	
Protector:		CED3723		TestBoard:		Amps Performance		Fixture #3	
Special Points		Vline (V)	Iline (A)	Watts	RPM	Tq (Oz-ft)	HP	Eff (%)	PF (%)
		115.0	6.10	132	1798	0.00	0.000	0.0	18.7
		115.0	6.60	345	1778	11.35	0.240	52.0	45.4
		115.0	7.71	550	1757	22.55	0.472	64.0	62.0
		115.0	9.03	744	1737	32.24	0.667	66.9	71.6
36.5 OZ-FT		115.0	9.69	834	1727	36.50	0.751	67.1	74.8
0.75 HP		115.0	9.69	833	1727	36.47	0.750	67.1	74.8
1725 RPM		115.0	9.89	859	1725	37.65	0.773	67.1	75.6
		115.0	10.43	926	1718	40.55	0.829	66.8	77.2
		115.0	11.94	1104	1696	48.32	0.976	65.9	80.4
		115.0	13.71	1302	1671	55.99	1.114	63.9	82.5
		115.0	15.44	1486	1646	61.98	1.215	61.0	83.7
		115.0	17.14	1661	1621	67.25	1.298	58.3	84.3
		115.0	18.94	1842	1592	71.61	1.357	55.0	84.6
		115.0	20.79	2016	1560	74.42	1.382	51.1	84.3
		115.0	22.60	2184	1526	76.91	1.397	47.7	84.0
		115.0	24.46	2341	1489	78.44	1.390	44.3	83.2
BDT OZ-FT		115.0	25.88	2462	1456	78.64	1.363	41.3	82.7
		115.0	26.24	2494	1447	78.21	1.348	40.3	82.6
		115.0	27.99	2634	1403	76.49	1.278	36.2	81.8
		115.0	29.71	2763	1355	74.50	1.202	32.5	80.9
		115.0	31.36	2882	1303	70.93	1.101	28.5	79.9
		115.0	32.94	2989	1247	66.44	0.986	24.6	78.9
		115.0	34.42	3084	1186	61.18	0.864	20.9	77.9
		115.0	35.82	3165	1120	54.85	0.731	17.2	76.8
		115.0	37.13	3235	1048	47.44	0.592	13.7	75.8
		115.0	38.35	3294	971	39.43	0.456	10.3	74.7
		115.0	39.44	3336	889	30.78	0.326	7.3	73.5
		115.0	40.45	3364	800	20.46	0.195	4.3	72.3
		115.0	41.16	3361	705	10.59	0.089	2.0	71.0
		115.0	41.85	3477	607	17.93	0.130	2.8	72.2
		115.0	56.61	6183	531	166.25	1.050	12.7	95.0
		115.0	56.67	6157	424	158.72	0.801	9.7	94.5
		115.0	57.08	6187	291	158.61	0.549	6.6	94.3
		115.0	57.26	6190	152	157.62	0.286	3.4	94.0

DRAWING NO. PAGE 3 of 8

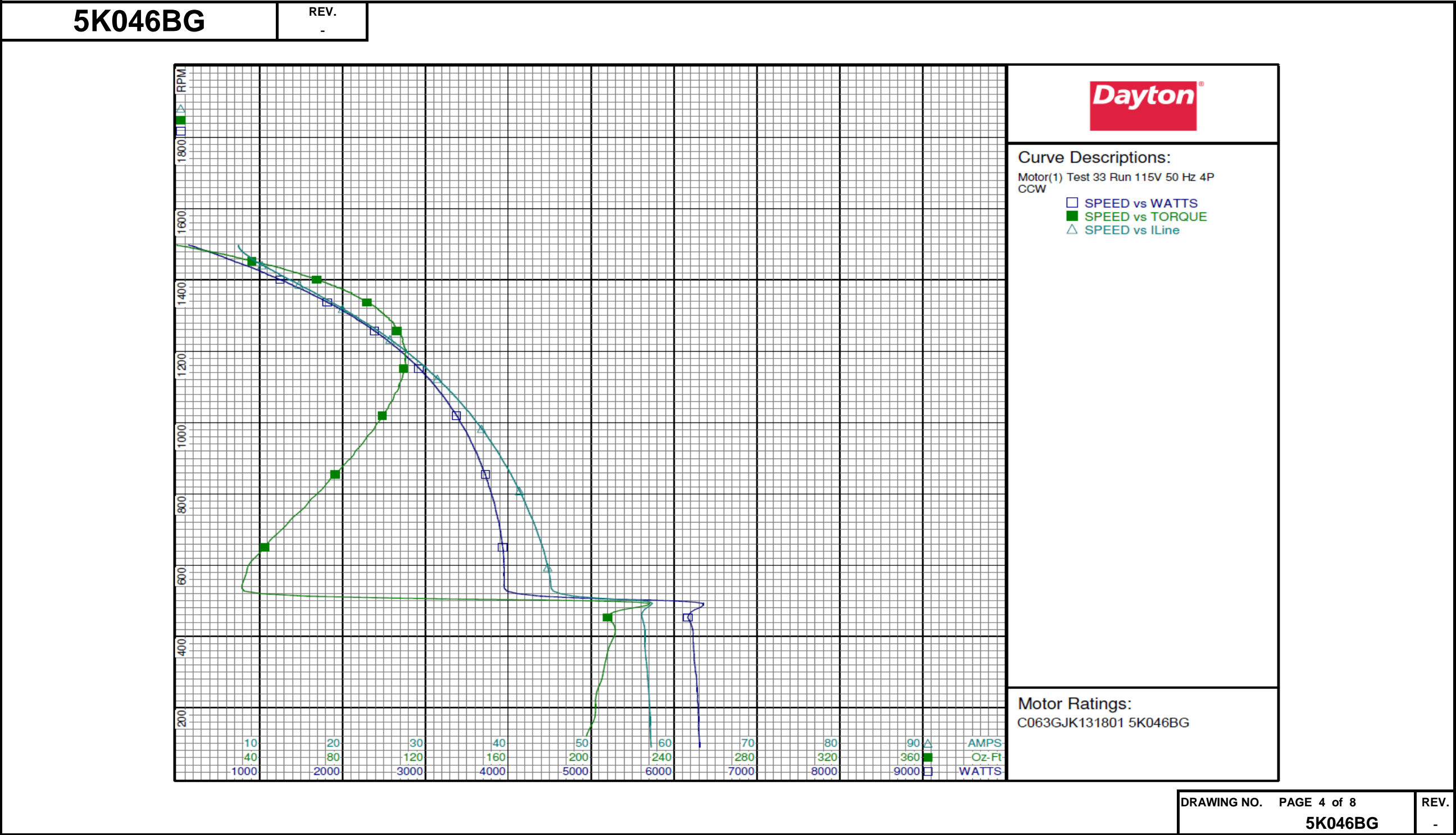
5K046BG

REV.
-

DRAWING NO.	PAGE 3 of 8	REV.
5K046BG		-

Dayton Electric Mfg. Co. Lake Forest, IL 60045 USA

Performance Data



Performance Data



5K046BG		REV. -							
Dayton Manufacturing Company									
Motor Description				Test Conditions					
Model:	C063GJK131801 5K046BG			Test Type:	Start	Run Cap:	0		
Motor ID:	1			Test Number:	7	Start Cap:	709µfd		
Poles:	4			Poles:	4	Environment:	20.5 Deg C 15 % RH 1004 hPa		
Volts:	115/230			Volts:	230	Tested:	3/20/2013 10:47:53 AM		
Frequency:	60/50			Hz:	60	Tested By:	Sharp, Gerald		
HP:	3/4			Rotation:	CCW	Gear Ratio:	1:1		
Speed:	1725/1425			Special Cond:	2-Line st thru sw for PUT			Bearing Friction:	-0.63 Oz-Ft
Phase:	1			Speed Conn:				Windage Torque:	-1.66 Oz-Ft
Protector:	CED3723			TestBoard:	Amps Performance Fixture #3				
Special Points	Vline(V)	Iline(A)	Watts	RPM	Tq(Oz-ft)	HP	Eff(%)	PF(%)	
	230.0	28.50	5878	15	135.24	0.025	0.3	89.7	
	230.0	28.43	5867	41	137.14	0.068	0.9	89.7	
	230.0	28.18	5821	188	137.11	0.307	3.9	89.8	
	230.0	27.90	5778	343	137.41	0.562	7.3	90.0	
	230.0	27.59	5740	483	137.85	0.792	10.3	90.5	
	230.0	27.42	5682	610	138.65	1.007	13.2	90.1	
	230.0	27.67	5752	725	138.17	1.193	15.5	90.4	
	230.0	27.70	5810	831	141.27	1.397	17.9	91.2	
	230.0	27.52	5804	928	141.67	1.565	20.1	91.7	
	230.0	25.13	5069	1012	104.44	1.259	18.5	87.7	
PUT OZ-FT	230.0	18.16	3118	1032	37.13	0.456	10.9	74.6	
	230.0	18.48	3242	1070	51.99	0.662	15.2	76.3	
	230.0	17.47	3099	1154	57.66	0.792	19.1	77.1	
	230.0	16.55	2985	1231	63.93	0.937	23.4	78.4	
	230.0	15.63	2858	1298	69.32	1.071	28.0	79.5	
	230.0	14.68	2726	1356	73.11	1.180	32.3	80.7	
	230.0	13.74	2581	1409	75.35	1.264	36.5	81.7	
	230.0	12.79	2428	1457	76.17	1.321	40.6	82.5	
	230.0	11.85	2266	1499	75.82	1.353	44.5	83.1	
	230.0	10.88	2092	1537	74.24	1.358	48.4	83.6	
	230.0	9.96	1920	1572	71.53	1.338	52.0	83.8	
	230.0	9.07	1749	1603	68.03	1.299	55.4	83.8	
	230.0	8.18	1569	1632	63.59	1.235	58.7	83.4	
	230.0	7.34	1392	1658	57.81	1.141	61.1	82.5	
	230.0	6.52	1213	1682	51.73	1.036	63.7	80.9	
	230.0	5.72	1028	1706	44.19	0.897	65.1	78.1	
	230.0	4.99	856	1727	36.74	0.755	65.9	74.6	
	230.0	4.31	670	1747	27.95	0.582	64.7	67.5	
	230.0	3.75	495	1767	18.95	0.399	60.1	57.4	
	230.0	3.35	310	1786	8.65	0.184	44.3	40.2	
	230.0	3.19	166	1801	0.01	0.000	0.1	22.6	

DRAWING NO. PAGE 5 of 8

5K046BG

REV.
-

DRAWING NO.	PAGE 5 of 8	REV.
	5K046BG	-

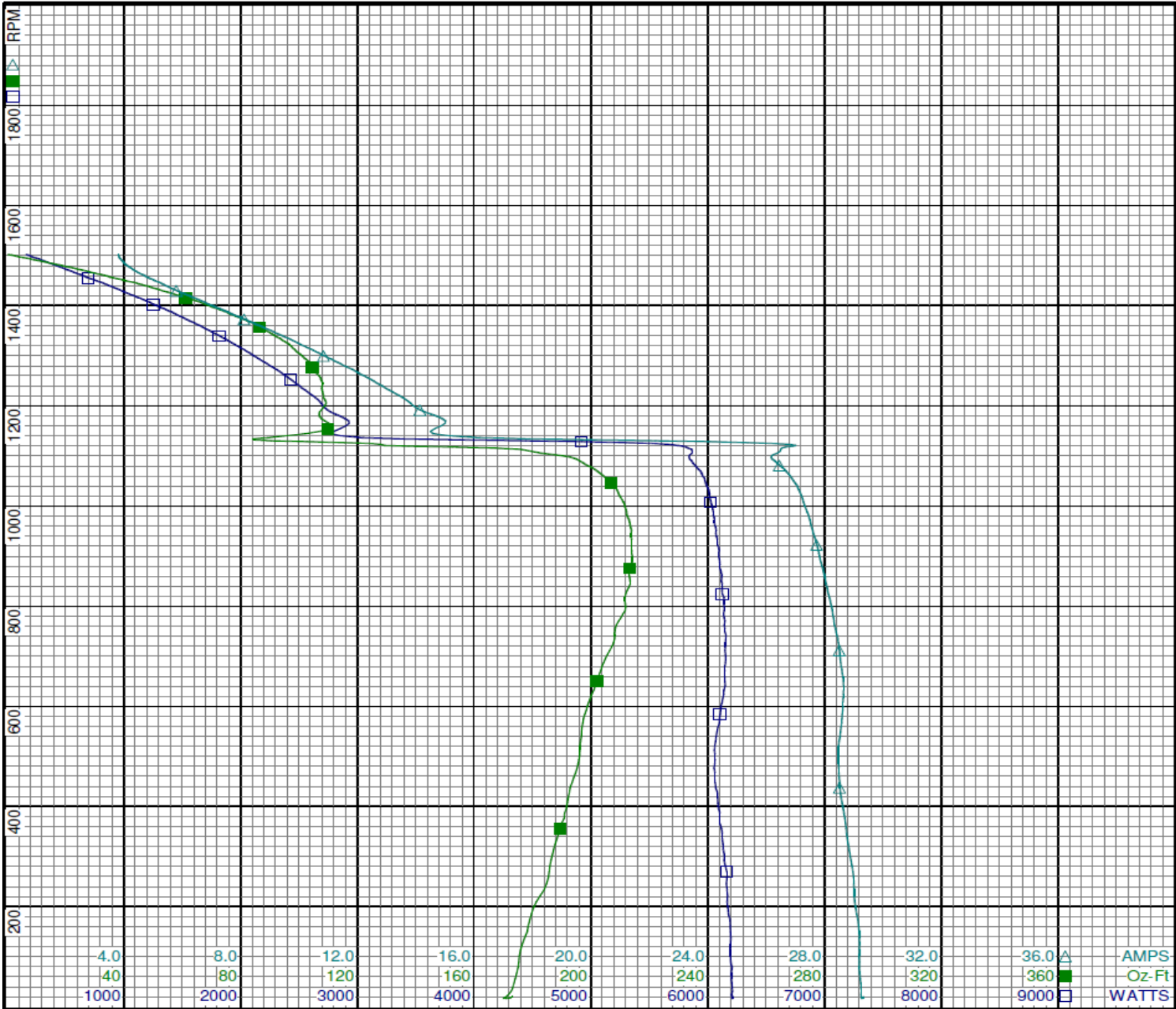
Dayton Electric Mfg. Co. Lake Forest, IL 60045 USA

Performance Data



5K046BG

REV.
-



Curve Descriptions:
Motor(1) Test 24 Start 230V 50 Hz 4P
2 Line st thru sw for PUT CCW 709ufd Run
□ SPEED vs WATTS
■ SPEED vs TORQUE
△ SPEED vs ILine

Motor Ratings:
C063GJK131801 5K046BG

Performance Data



5K046BG		REV. -							
Dayton Manufacturing Company									
Motor Description				Test Conditions					
Model:		C063GJK131801 5K046BG		Test Type:		Run		Run Cap: 0	
Motor ID:		1		Test Number:		11		Start Cap: 709 µfd	
Poles:		4		Poles:		4		Environment: 20.5 Deg C 15 % RH 1004 hPa	
Volts:		115/230		Volts:		230		Tested: 3/20/2013 10:24:39 AM	
Frequency:		60/50		Hz:		60		Tested By: Sharp, Gerald	
HP:		3/4		Rotation:				Gear Ratio: 1:1	
Speed:		1725/1425		Special Cond:				Bearing Friction: -0.59 Oz-Ft	
Phase:		1		Speed Conn:				Windage Torque: -1.61 Oz-Ft	
Protector:		CED3723		TestBoard:		Amps Performance		Fixture #3	
Special Points		Vline(V)	Iline(A)	Watts	RPM	Tq(Oz-ft)	HP	Eff (%)	PF (%)
		230.0	3.03	132	1797	0.00	0.000	0.0	19.0
		230.0	3.30	351	1777	11.77	0.249	52.9	46.3
		230.0	3.84	544	1757	22.26	0.466	63.8	61.7
		230.0	4.48	732	1737	31.72	0.656	66.9	71.0
36.5 OZ-FT		230.0	4.85	833	1727	36.50	0.750	67.2	74.6
0.75 HP		230.0	4.85	833	1727	36.48	0.750	67.2	74.6
1725 RPM		230.0	4.93	853	1725	37.79	0.776	67.9	75.1
		230.0	5.16	909	1718	40.06	0.819	67.2	76.7
		230.0	5.90	1084	1697	47.43	0.958	65.9	79.9
		230.0	6.77	1279	1672	54.86	1.092	63.7	82.1
		230.0	7.63	1463	1647	61.48	1.205	61.5	83.3
		230.0	8.48	1638	1621	66.37	1.281	58.3	84.0
		230.0	9.37	1816	1592	70.89	1.343	55.2	84.3
		230.0	10.27	1989	1560	74.77	1.389	52.1	84.2
		230.0	11.17	2153	1526	76.52	1.390	48.2	83.8
		230.0	12.11	2318	1488	77.50	1.373	44.2	83.3
BDT OZ-FT		230.0	12.38	2362	1477	78.10	1.373	43.4	83.0
		230.0	13.00	2470	1448	78.10	1.346	40.7	82.6
		230.0	13.88	2613	1404	76.46	1.278	36.5	81.9
		230.0	14.74	2743	1356	74.11	1.196	32.5	80.9
		230.0	15.57	2860	1304	70.93	1.101	28.7	79.9
		230.0	16.36	2967	1247	66.49	0.987	24.8	78.9
		230.0	17.12	3062	1186	61.04	0.862	21.0	77.8
		230.0	17.82	3147	1120	54.76	0.730	17.3	76.8
		230.0	18.48	3220	1049	47.87	0.598	13.8	75.8
		230.0	19.10	3275	972	39.42	0.456	10.4	74.5
		230.0	19.65	3321	889	30.67	0.325	7.3	73.5
		230.0	20.16	3349	801	20.34	0.194	4.3	72.2
		230.0	20.52	3342	707	11.81	0.099	2.2	70.8
		230.0	21.39	3609	607	22.04	0.159	3.3	73.3
		230.0	27.38	5725	527	140.42	0.882	11.5	90.9
		230.0	27.59	5752	422	135.93	0.682	8.8	90.6
		230.0	27.82	5781	287	134.69	0.460	5.9	90.4
		230.0	27.96	5787	149	134.44	0.239	3.1	90.0

DRAWING NO. PAGE 7 of 8

5K046BG

REV.
-

DRAWING NO.	PAGE 7 of 8	REV.
	5K046BG	-

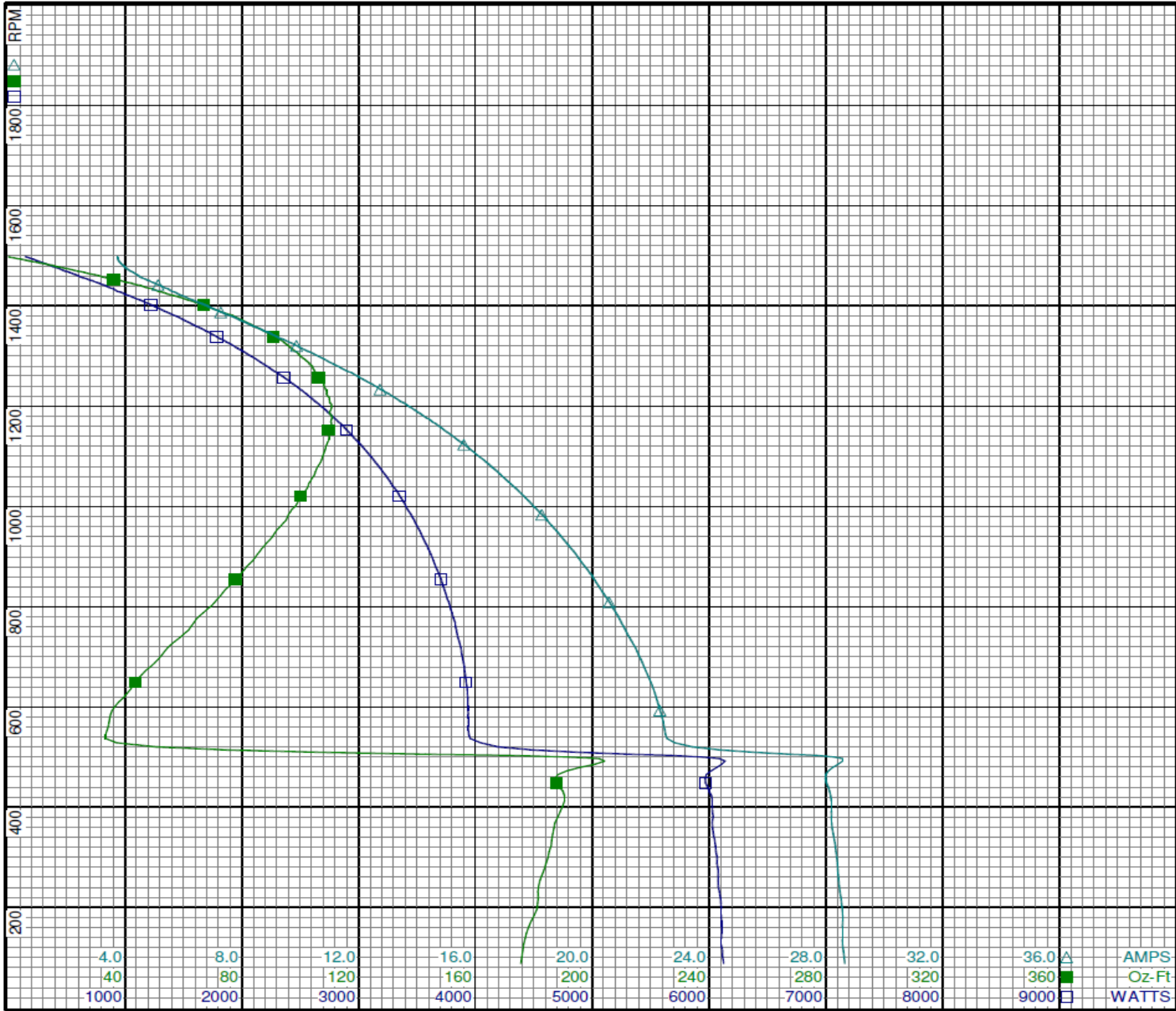
Dayton Electric Mfg. Co. Lake Forest, IL 60045 USA

Performance Data



5K046BG

REV.
-



Curve Descriptions:
Motor(1) Test 25 Run 230V 50 Hz 4P
CCW
□ SPEED vs WATTS
■ SPEED vs TORQUE
△ SPEED vs IL

Motor Ratings:
C063GJK131801 5K046BG

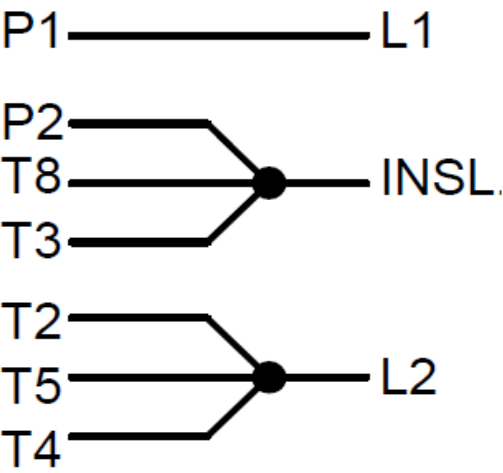
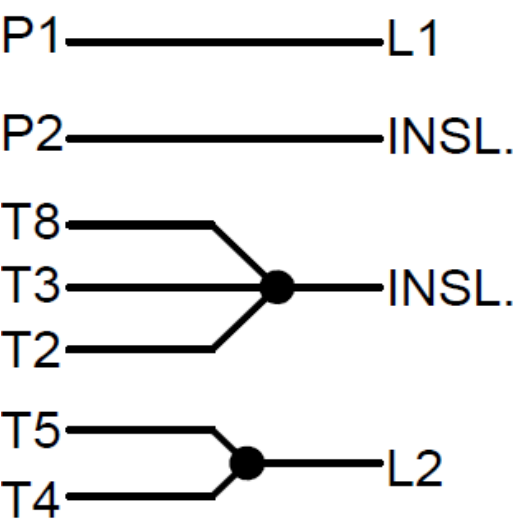
5K046BG

REV.
0

CONNECTION INFORMATION

HIGH VOLTAGE

LOW VOLTAGE



ROTATION: CCW L.E.
TO REVERSE ROTATION: INTERCHANGE
LEADS T5 AND T8

Dayton®**AUGER DRIVE MOTOR****HP:** 3/4**VOLTS:** 115/230**AMPS:** 10.6/5.3**RPM:** 1725/1425**DUTY:** CONT**SF:** 1.0**KVA CODE:** L**ENCL:** TEFC**THERMALLY PROTECTED:** MANUALMFG. NO. PROT. CODE: AVG. F.L.
EFF.**MTR REF:** C63BXGJK-1318**FOR 50 HZ FLA 11.8/5.9 & SFA 11.8/5.9**

E37403



258501

Part
No **5K046BG****PH:** 1**HZ:** 60/50**FR:** 56YZ**INS CL:** B**AMB:** 40 °C**SFA:** 10.6/5.3**Disconnect Power Before Making Any
Electrical Connections or Changes**CONNECTION INFORMATIONHIGH VOLTAGELOW VOLTAGE

P1 ————— L1

P2 ————— INSL.

T8 ————— INSL.

T3 ————— INSL.

T2 ————— INSL.

T5 ————— L2

T4 ————— L2

P1 ————— L1

P2 ————— INSL.

T8 ————— INSL.

T3 ————— INSL.

T2 ————— L2

T5 ————— L2

T4 ————— L2

ROTATION: CCW L.E.
TO REVERSE ROTATION: INTERCHANGE
LEADS T5 AND T8**Mfd for Dayton Electric Mfg. Co., Lake Forest, IL 60045 USA****Made in Mexico**