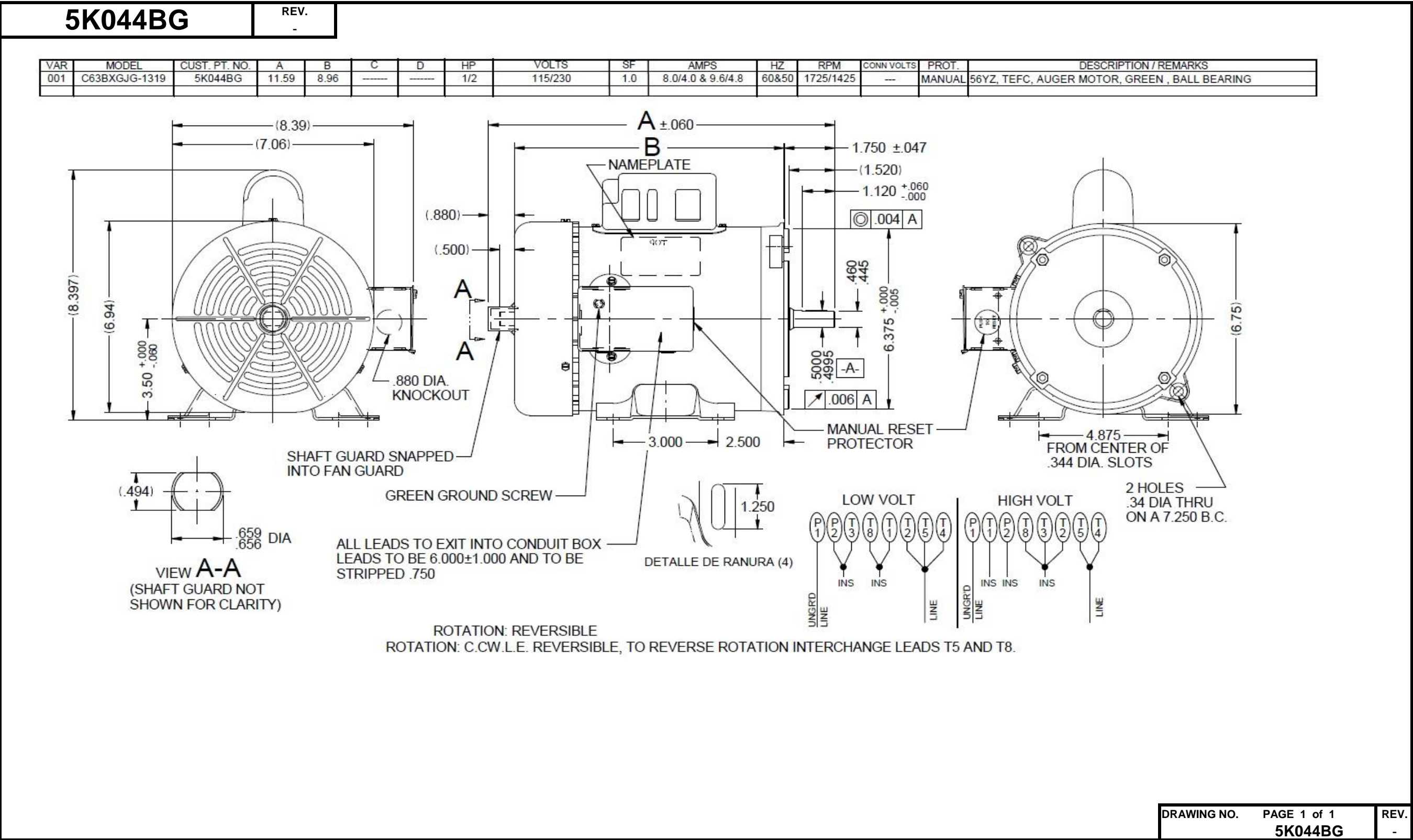


Dimensional Drawing



# Performance Data



**5K044BG**

REV.  
-

## MOTOR PERFORMANCE

<b>HP:</b>	1/2							
<b>Poles:</b>	4							
<b>No. of Speeds:</b>	1							
<b>Volts:</b>	115/230	<b>115</b>	<b>230</b>					
<b>HZ:</b>	60&50	<b>60</b>	<b>60</b>					
<b>Service Factor:</b>	1							
<b>Efficiency:</b>	@ Rated Load	61.5	61.6					
<b>Power Factor:</b>	@ Rated Load	66.6	66.5					
<b>Amps:</b>	@ No Load							
	@ Rated Load	7.9	3.9					
	@ Service Factor	N/A	N/A					
	@ Locked Rotor	40.2	21					
<b>RPM:</b>	@ Rated Load	1742	1742					
<b>Ambient (°C):</b>	40							
<b>Altitude (FASL):</b>								
<b>Torques:</b>	Breakdown	61.8	62.6					
	Locked Rotor	86.6	81.2					
	Pull-Up	63.7	81.2					
	Rated Load	24.1	24.1					
	Service Factor	N/A	N/A					
<b>Watts:</b>	Rated Load	607	607					
<b>KVA Code:</b>	A							
<b>Temperature Rise:</b>	@ Rated Load	51	53.9					
	@ Service Factor	N/A	N/A					
<b>Thermal Protector:</b>	Trip Temp (°C)	140.9	149.3					
<b>Winding Material:</b>	Start (Auxiliary)	Cu	Cu					
	Run (Main)	Cu	Cu					
<b>Capacitor(s):</b>	Start (MFD / Volts)	483						
	No. of Start Capacitors							
	Run (MFD / Volts)							
	No. of Run Capacitors							

## LOW SPEED PERFORMANCE DATA:

<b>HP:</b>								
<b>Poles:</b>								
<b>Volts:</b>								
<b>HZ:</b>								
<b>Efficiency:</b>	@ Rated Load							
<b>Power Factor:</b>	@ Rated Load							
<b>Amps:</b>	@ No Load							
	@ Rated Load							
	@ Service Factor							
	@ Locked Rotor							
<b>Torques:</b>	Bead Down							
	Locked Rotor							
	Pull-Up							
	Rated Load							
	Service Factor							
<b>Watts:</b>	@ Rated Load							
<b>Temperature Rise:</b>	@ Rated Load							
	@ Service Factor							

DRAWING NO. PAGE 1 of 1  
5K044BG

REV.  
-

**Dayton Electric Mfg. Co. Lake Forest, IL 60045 USA**

# Performance Data



**5K044BG**

REV.  
-

## Dayton Manufacturing Company

### Motor Description

Model: C063GJG131901 5K044BG  
Motor ID: 1 of 1  
Poles: 4  
Volts: 115/230  
Frequency: 60/50  
HP: 1/2  
Speed: 1725  
Phase: 1  
Protector: CED

### Test Conditions

Test Type: Start  
Test Number: 5  
Poles: 4  
Volts: 115  
Hz: 60  
Rotation:  
Special Cond:  
Speed Conn:  
TestBoard: Amtps Performance Fixture #1  
Run Cap: 0  
Start Cap: 506 µfd  
Environment: 21.2 Deg C 51 % RH 995 hPa  
Tested: 5/15/2015 11:44:32 AM  
Tested By: Sharp, Gerald  
Gear Ratio: 1:1  
Bearing Friction: -0.60 Oz-Ft  
Windage Torque: -1.59 Oz-Ft

Comments: ax is on the switch "inside" this motor on this 3 line test

Special Points	Vline (V)	Vaux (V)	Vcap (V)	Iline (A)	Imain (A)	Iaux (A)	Watts	RPM	Tq (Oz-ft)	HP	Eff (%)	PF (%)	Cap
PUT OZ-FT	115.0	74.7	123.9	40.28	35.21	21.56	4497	8	86.60	0.008	0.1	97.1	461.8
	115.0	74.8	123.8	40.26	35.20	21.56	4496	7	86.57	0.008	0.1	97.1	462.0
	115.0	75.3	123.5	40.26	35.08	21.54	4504	41	89.41	0.044	0.7	97.3	462.6
	115.0	76.7	121.9	40.18	34.60	21.23	4492	187	91.91	0.205	3.4	97.2	461.7
	115.0	78.1	120.5	39.98	33.98	20.95	4481	320	97.07	0.370	6.2	97.4	461.0
	115.0	79.8	119.0	39.78	33.27	20.66	4465	445	102.85	0.544	9.1	97.6	460.7
	115.0	81.6	117.4	39.57	32.52	20.34	4447	560	109.57	0.731	12.3	97.7	459.7
	115.0	84.1	115.9	39.46	31.74	20.06	4447	667	116.07	0.922	15.5	98.0	459.1
	115.0	86.9	115.1	39.43	30.87	19.91	4456	768	123.22	1.126	18.9	98.3	458.7
	115.0	89.7	114.1	39.24	29.89	19.71	4448	860	129.49	1.326	22.2	98.6	458.4
	115.0	92.7	113.1	39.06	28.87	19.54	4442	944	135.12	1.519	25.5	98.9	458.3
	115.0	95.8	112.3	38.87	27.80	19.38	4431	1025	140.72	1.717	28.9	99.1	457.7
	115.0	99.2	111.6	38.67	26.72	19.27	4418	1096	145.13	1.894	32.0	99.3	457.8
	115.0	117.8	111.0	37.02	26.49	16.26	4101	1164	127.06	1.760	32.0	96.3	388.7
	115.0	160.0	117.0	27.92	27.72	0.02	2497	1213	53.96	0.779	23.3	77.8	0.5
	115.0	160.4	115.6	26.66	26.60	0.00	2410	1275	55.29	0.839	26.0	78.6	0.0
	115.0	159.8	114.8	25.39	25.32	0.02	2324	1331	57.97	0.919	29.5	79.6	0.5
	115.0	159.3	114.2	24.06	23.99	0.02	2229	1382	60.20	0.990	33.1	80.6	0.6
	115.0	159.0	113.6	22.67	22.66	0.03	2124	1428	61.75	1.050	36.9	81.5	0.6
	115.0	158.6	113.1	21.30	21.28	0.02	2012	1470	62.15	1.087	40.3	82.1	0.5
	115.0	158.4	112.7	19.89	19.88	0.02	1893	1508	62.14	1.115	44.0	82.7	0.5
	115.0	158.0	112.3	18.47	18.46	0.02	1766	1543	60.90	1.119	47.3	83.1	0.5
	115.0	157.7	111.9	17.06	17.04	0.02	1634	1575	59.30	1.112	50.8	83.3	0.5
	115.0	157.5	111.5	15.68	15.66	0.02	1502	1604	57.35	1.095	54.4	83.3	0.5
	115.0	157.2	111.1	14.32	14.30	0.02	1365	1631	53.76	1.044	57.0	82.9	0.5
	115.0	157.0	110.8	12.96	12.94	0.02	1222	1656	49.68	0.980	59.8	82.0	0.5
	115.0	156.8	110.6	11.67	11.65	0.02	1082	1678	45.18	0.903	62.2	80.7	0.5
	115.0	156.6	110.4	10.43	10.40	0.02	940	1699	40.05	0.810	64.3	78.4	0.6
	115.0	156.3	110.0	9.17	9.14	0.02	790	1720	33.92	0.695	65.6	74.9	0.5
	115.0	156.1	109.7	8.06	8.04	0.02	638	1740	27.39	0.567	66.3	68.9	0.5
	115.0	155.9	109.3	7.04	7.03	0.02	485	1759	20.23	0.424	65.1	59.9	0.4
	115.0	155.7	109.3	6.28	6.26	0.02	338	1778	12.02	0.254	56.2	46.8	0.5
	115.0	155.6	108.9	5.81	5.81	0.02	182	1796	2.77	0.059	24.3	27.2	0.5
	115.0	155.6	108.9	5.77	5.76	0.02	149	1800	0.76	0.016	8.2	22.4	0.5

DRAWING NO. PAGE 1 of 8 REV.  
5K044BG -

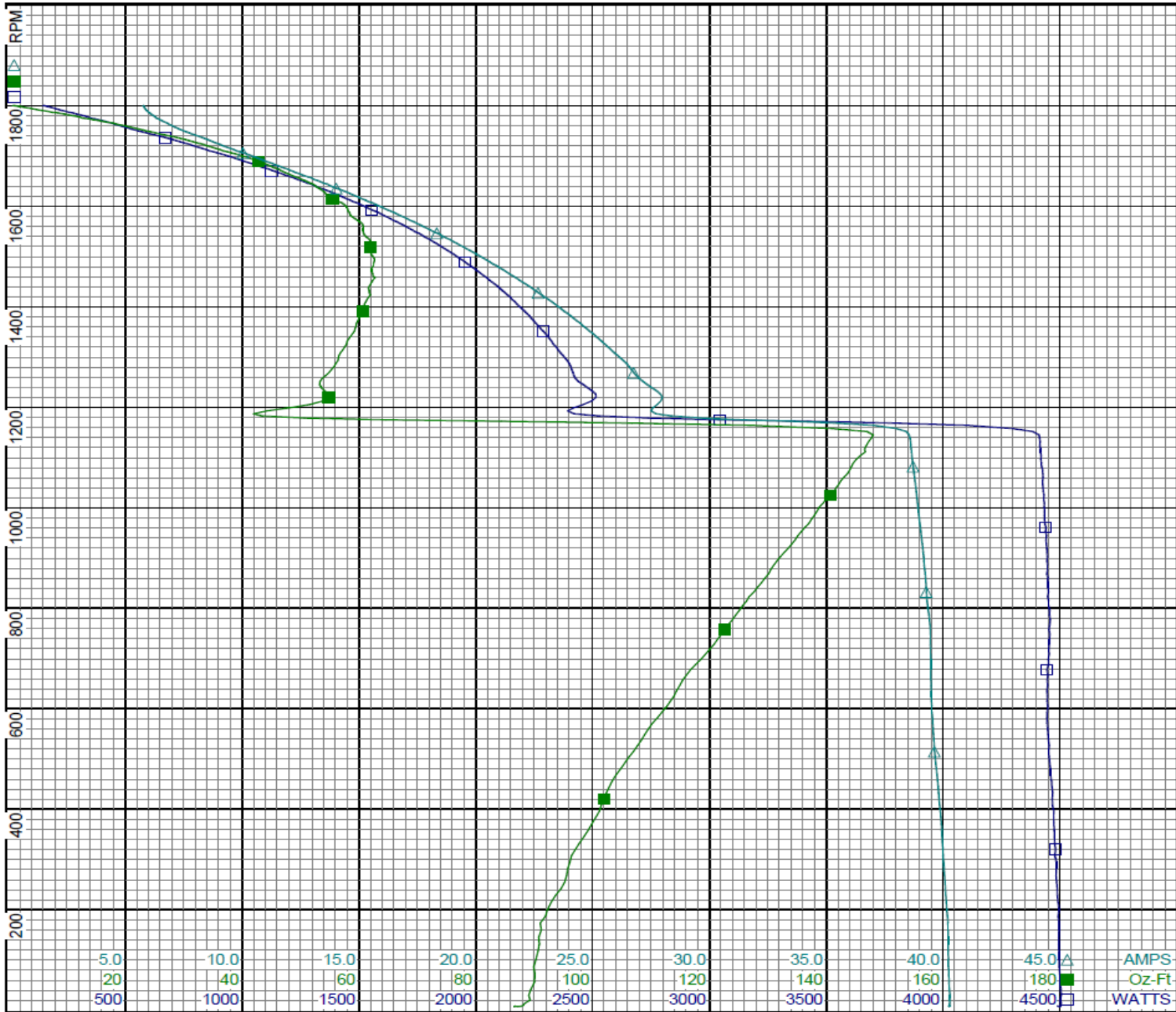
Dayton Electric Mfg. Co. Lake Forest, IL 60045 USA

Performance Data



5K044BG

REV.  
-



Curve Descriptions:  
Motor(1) Test 5 Start 115V 60 Hz 4P  
□ SPEED vs WATTS  
■ SPEED vs TORQUE  
△ SPEED vs ILine

Motor Ratings:  
C063GJG131901 5K044BG

DRAWING NO.	PAGE 2 of 8	REV.
	5K044BG	-

Dayton Electric Mfg. Co. Lake Forest, IL 60045 USA



# Performance Data



5K044BG		REV. -						
Dayton Manufacturing Company								
Motor Description				Test Conditions				
Model:	C063GJG131901 5K044BG			Test Type:	Run	Run Cap:	0	
Motor ID:	1			Test Number:	23	Start Cap:	506 µfd	
Poles:	4			Poles:	4	Environment:		
Volts:	115/230			Volts:	115	Tested:	9/2/2014 12:02:57 PM	
Frequency:	60/50			Hz:	60	Tested By:	Sharp, Gerald	
HP:	1/2			Rotation:		Gear Ratio:	1:1	
Speed:	1725/1425			Special Cond:		Bearing Friction:	-1.07 Oz-Ft	
Phase:	1			Speed Conn:		Windage Torque:	-3.05 Oz-Ft	
Protector:	CED			TestBoard:	Amps Performance	Fixture #3		
Special Points	Vline (V)	Iline (A)	Watts	RPM	Tq(Oz-ft)	HP	Eff (%)	PF (%)
	115.0	5.84	157	1792	0.00	0.000	0.0	23.4
	115.0	6.38	342	1773	10.74	0.227	49.4	46.7
	115.0	7.39	523	1752	20.04	0.418	59.6	61.6
24.3 OZ-FT	115.0	7.98	611	1742	24.30	0.504	61.5	66.6
0.5 HP	115.0	7.95	607	1742	24.11	0.500	61.4	66.4
	115.0	8.55	693	1732	27.83	0.574	61.8	70.4
1725 RPM	115.0	8.96	747	1725	30.58	0.628	62.7	72.6
	115.0	9.96	869	1710	35.69	0.726	62.4	75.9
	115.0	11.22	1017	1689	41.26	0.830	60.8	78.9
	115.0	12.57	1174	1666	47.04	0.933	59.3	81.2
	115.0	14.11	1337	1640	51.93	1.014	56.6	82.4
	115.0	15.58	1485	1613	55.69	1.069	53.7	82.9
	115.0	17.05	1628	1585	58.49	1.104	50.6	83.1
	115.0	18.57	1769	1552	60.84	1.124	47.4	82.8
	115.0	20.00	1897	1519	61.60	1.114	43.8	82.5
BDT OZ-FT	115.0	21.20	1999	1488	61.87	1.096	40.9	82.0
	115.0	21.49	2023	1480	61.75	1.088	40.1	81.9
	115.0	22.88	2135	1440	61.03	1.046	36.6	81.2
	115.0	24.26	2238	1396	59.48	0.988	33.0	80.2
	115.0	25.57	2333	1348	56.93	0.913	29.2	79.3
	115.0	26.82	2415	1296	54.09	0.834	25.8	78.3
	115.0	27.99	2488	1239	50.35	0.743	22.3	77.3
	115.0	29.10	2554	1178	46.15	0.647	18.9	76.3
	115.0	30.13	2609	1112	41.49	0.549	15.7	75.3
	115.0	31.07	2655	1040	36.55	0.453	12.7	74.3
	115.0	31.93	2694	963	31.54	0.362	10.0	73.4
	115.0	32.70	2717	881	26.51	0.278	7.6	72.2
	115.0	33.42	2735	793	21.04	0.199	5.4	71.2
	115.0	33.95	2738	697	14.68	0.122	3.3	70.1
	115.0	34.15	2721	596	14.24	0.101	2.8	69.3
	115.0	34.26	2742	490	18.24	0.106	2.9	69.6
	115.0	34.67	2774	375	13.67	0.061	1.6	69.6
	115.0	34.97	2789	251	8.62	0.026	0.7	69.4
	115.0	35.14	2796	119	2.74	0.004	0.1	69.2

DRAWING NO.

PAGE 3 of 8

5K044BG

REV.

-

DRAWING NO.	PAGE 3 of 8	REV.
5K044BG		-

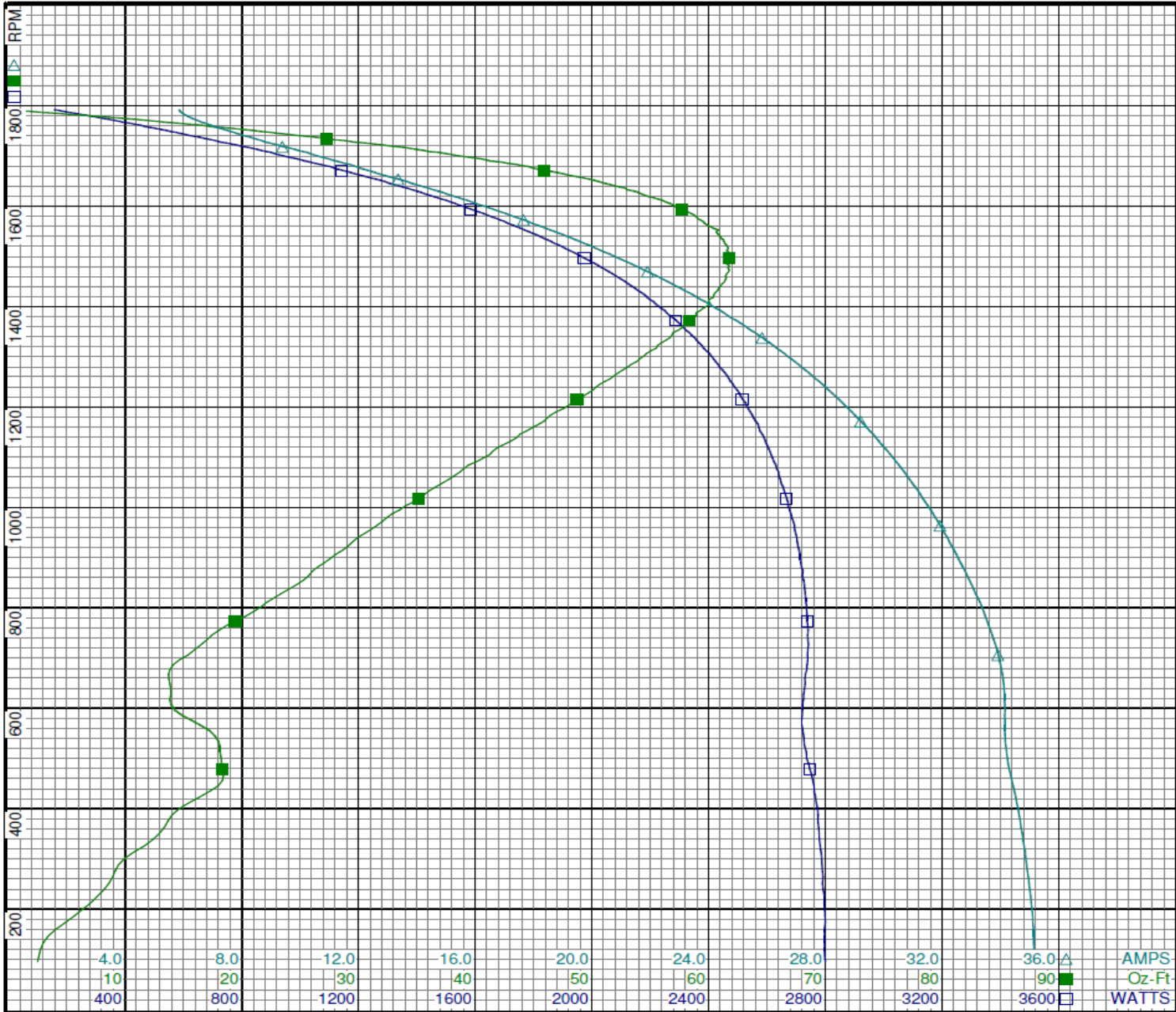
Dayton Electric Mfg. Co. Lake Forest, IL 60045 USA

Performance Data



5K044BG

REV.  
-



Curve Descriptions:  
Motor(1) Test 23 Run 115V 60 Hz 4P

- SPEED vs WATTS
- SPEED vs TORQUE
- △ SPEED vs IL

Motor Ratings:  
C063GJG131901 5K044BG

# Performance Data



**5K044BG**

REV.  
-

## Dayton Manufacturing Company

### Motor Description

Model: C063GJG131901 5K044BG  
Motor ID: 1  
Poles: 4  
Volts: 115/230  
Frequency: 60/50  
HP: 1/2  
Speed: 1725/1425  
Phase: 1  
Protector: CED

### Test Conditions

Test Type: Start  
Test Number: 7  
Poles: 4  
Volts: 230  
Hz: 60  
Rotation:  
Special Cond:  
Speed Conn:  
TestBoard: Amtps Performance Fixture #3  
Run Cap: 0  
Start Cap: 506 µfd  
Environment:  
Tested: 9/2/2014 1:57:07 PM  
Tested By: Sharp, Gerald  
Gear Ratio: 1:1  
Bearing Friction: -0.88 Oz-Ft  
Windage Torque: -2.91 Oz-Ft

Comments: aux is inside of the motor for this 3 line test

Special Points	Vline(V)	Vaux(V)	Vcap(V)	Iline(A)	Imain(A)	Iaux(A)	Watts	RPM	Tq(Oz-ft)	HP	Eff(%)	PF(%)	Cap
PUT OZ-FT	230.0	78.7	111.6	21.05	20.20	19.664	4535	6	81.28	0.006	0.1	93.7	467.4
	230.0	78.7	111.6	21.05	20.20	19.664	4535	6	81.28	0.006	0.1	93.7	467.4
	230.0	78.5	111.3	21.02	20.11	19.603	4531	38	82.08	0.037	0.6	93.7	467.2
	230.0	77.6	109.7	20.93	19.61	19.303	4513	187	85.05	0.189	3.1	93.7	466.6
	230.0	76.7	108.2	20.83	18.96	19.008	4502	344	90.60	0.371	6.1	94.0	466.1
	230.0	75.7	106.5	20.67	18.25	18.685	4482	484	96.08	0.554	9.2	94.2	465.6
	230.0	74.6	104.5	20.55	17.48	18.316	4462	612	102.08	0.743	12.4	94.4	464.9
	230.0	74.3	103.6	20.57	16.58	18.137	4488	728	109.17	0.946	15.7	94.9	464.5
	230.0	74.1	102.8	20.47	15.63	18.003	4491	833	115.42	1.144	19.0	95.4	464.8
	230.0	73.8	101.9	20.30	14.64	17.835	4477	929	121.21	1.340	22.3	95.9	464.3
	230.0	73.6	101.0	20.13	13.58	17.693	4460	1017	126.93	1.537	25.7	96.3	464.5
	230.0	73.6	100.4	19.94	12.49	17.577	4440	1097	131.27	1.714	28.8	96.8	464.5
	230.0	73.9	100.1	19.71	11.36	17.537	4413	1169	134.56	1.873	31.7	97.3	464.5
BDT OZ-FT	230.0	74.1	100.2	19.60	10.82	17.534	4395	1202	135.62	1.940	32.9	97.5	464.3
	230.0	98.2	110.1	15.71	13.44	5.495	3006	1230	65.69	0.962	23.9	83.2	132.4
	230.0	108.3	108.3	13.64	13.46	0.199	2430	1278	53.68	0.817	25.1	77.5	4.9
	230.0	105.7	105.1	12.83	12.73	0.019	2317	1342	56.50	0.902	29.0	78.5	0.5
	230.0	102.9	102.3	12.04	11.95	0.008	2204	1399	59.21	0.986	33.4	79.6	0.2
	230.0	100.5	99.7	11.24	11.17	0.014	2082	1449	60.63	1.046	37.5	80.5	0.4
	230.0	98.1	97.4	10.45	10.37	0.005	1952	1494	60.96	1.084	41.4	81.2	0.1
	230.0	95.9	95.2	9.67	9.60	0.007	1817	1533	60.49	1.104	45.3	81.7	0.2
	230.0	93.8	93.1	8.89	8.83	0.008	1679	1568	58.85	1.099	48.8	82.2	0.2
	230.0	91.8	91.1	8.12	8.07	0.007	1531	1601	56.23	1.071	52.2	81.9	0.2
	230.0	89.9	89.1	7.35	7.30	0.006	1381	1630	52.75	1.023	55.3	81.7	0.2
	230.0	88.1	87.3	6.63	6.58	0.009	1233	1656	48.49	0.956	57.8	80.9	0.3
	230.0	86.4	85.6	5.91	5.88	0.013	1079	1680	43.31	0.866	59.9	79.3	0.4
	230.0	84.8	83.9	5.22	5.19	0.009	919	1704	37.30	0.757	61.4	76.6	0.3
	230.0	83.2	82.3	4.59	4.57	0.007	768	1725	31.05	0.638	61.9	72.8	0.2
1725 RPM	230.0	83.2	82.3	4.59	4.56	0.007	768	1725	31.01	0.637	61.9	72.8	0.2
24.3 OZ-FT	230.0	81.8	80.9	4.04	4.03	0.002	622	1743	24.30	0.504	60.5	66.8	0.1
0.5 HP	230.0	81.8	80.9	4.03	4.01	0.002	617	1744	24.09	0.500	60.4	66.6	0.1
	230.0	81.6	80.8	3.99	3.97	0.001	605	1745	23.51	0.488	60.2	66.0	0.0
	230.0	80.2	79.3	3.50	3.48	0.002	449	1765	15.78	0.332	55.1	55.9	0.1
	230.0	78.8	77.8	3.12	3.12	0.001	277	1785	6.45	0.137	36.9	38.6	0.0
	230.0	77.9	77.0	2.99	2.99	0.002	161	1798	0.00	0.000	0.0	23.4	0.1

DRAWING NO.	PAGE 5 of 8	REV.
5K044BG		-

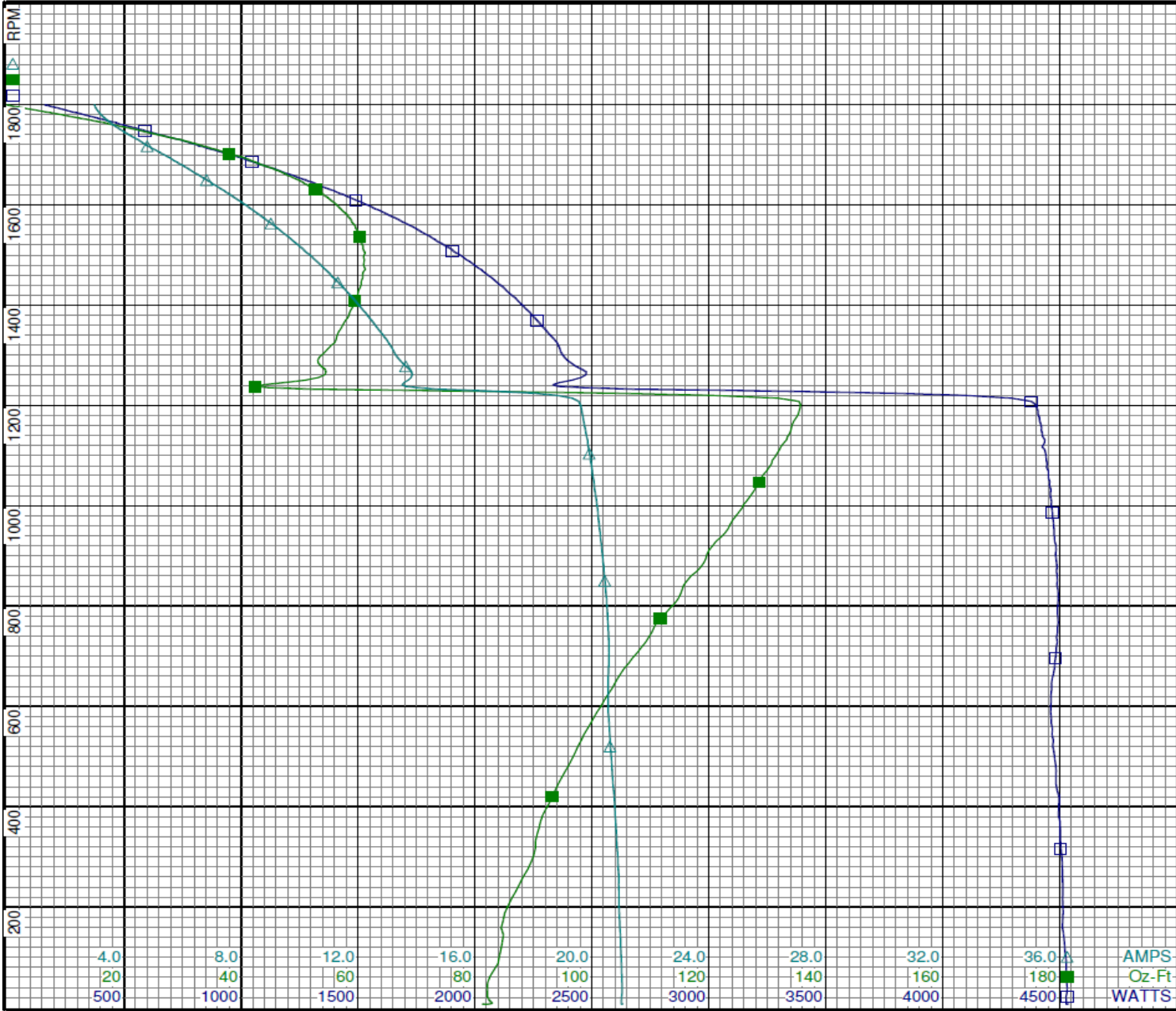
Dayton Electric Mfg. Co. Lake Forest, IL 60045 USA

Performance Data



5K044BG

REV.  
-



Curve Descriptions:  
Motor(1) Test 7 Start 230V 60 Hz 4P

- SPEED vs WATTS
- SPEED vs TORQUE
- △ SPEED vs ILine

Motor Ratings:  
C063GJG131901 5K044BG



# Performance Data



5K044BG		REV. -							
Dayton Manufacturing Company									
Motor Description				Test Conditions					
Model:		C063GJG131901 5K044BG		Test Type:		Run		Run Cap: 0	
Motor ID:		1		Test Number:		11		Start Cap: 506 µfd	
Poles:		4		Poles:		4		Environment:	
Volts:		115/230		Volts:		230		Tested: 9/2/2014 2:02:45 PM	
Frequency:		60/50		Hz:		60		Tested By: Sharp, Gerald	
HP:		1/2		Rotation:				Gear Ratio: 1:1	
Speed:		1725/1425		Special Cond:				Bearing Friction: -0.98 Oz-Ft	
Phase:		1		Speed Conn:				Windage Torque: -3.11 Oz-Ft	
Protector:		CED		TestBoard:		Amps Performance		Fixture #3	
Special Points		Vline (V)	Iline (A)	Watts	RPM	Tq(Oz-ft)	HP	Eff (%)	PF (%)
		230.0	2.926	159	1792	0.00	0.000	0.0	23.6
		230.0	3.209	349	1772	10.78	0.227	48.6	47.3
		230.0	3.692	518	1752	19.71	0.411	59.2	61.0
24.3 OZ-FT		230.0	3.987	610	1741	24.30	0.504	61.6	66.5
0.5 HP		230.0	3.974	607	1742	24.12	0.500	61.5	66.4
		230.0	4.281	693	1732	28.34	0.584	62.8	70.4
1725 RPM		230.0	4.494	750	1725	30.91	0.635	63.2	72.5
		230.0	4.945	859	1711	35.54	0.724	62.9	75.5
		230.0	5.600	1013	1690	41.47	0.834	61.4	78.7
		230.0	6.291	1165	1666	47.21	0.936	60.0	80.5
		230.0	7.034	1321	1641	52.09	1.018	57.4	81.7
		230.0	7.800	1475	1613	56.07	1.077	54.5	82.2
		230.0	8.538	1615	1585	58.89	1.111	51.3	82.2
		230.0	9.288	1754	1553	61.25	1.132	48.2	82.1
		230.0	10.034	1885	1518	62.32	1.127	44.6	81.7
BDT OZ-FT		230.0	10.762	2008	1481	62.69	1.105	41.1	81.1
		230.0	10.762	2008	1481	62.69	1.105	41.1	81.1
		230.0	11.478	2121	1441	61.89	1.061	37.3	80.3
		230.0	12.109	2233	1396	60.49	1.005	33.6	80.2
		230.0	12.760	2325	1348	58.19	0.933	30.0	79.2
		230.0	13.396	2409	1296	55.19	0.851	26.4	78.2
		230.0	13.989	2483	1239	51.55	0.760	22.8	77.2
		230.0	14.548	2545	1178	47.33	0.664	19.5	76.1
		230.0	15.060	2603	1111	42.67	0.564	16.2	75.1
		230.0	15.539	2648	1040	37.79	0.468	13.2	74.1
		230.0	15.976	2685	964	32.31	0.371	10.3	73.1
		230.0	16.371	2715	880	26.73	0.280	7.7	72.1
		230.0	16.721	2729	792	21.35	0.201	5.5	71.0
		230.0	16.998	2730	698	15.86	0.132	3.6	69.8
		230.0	17.096	2714	597	15.38	0.109	3.0	69.0
		230.0	17.159	2736	491	18.57	0.108	3.0	69.3
		230.0	17.357	2765	375	14.13	0.063	1.7	69.3
		230.0	17.512	2783	251	9.07	0.027	0.7	69.1
		230.0	17.608	2793	119	4.04	0.006	0.2	69.0

DRAWING NO.

PAGE 7 of 8

5K044BG

REV.

-

DRAWING NO.	PAGE 7 of 8	REV.
	5K044BG	-

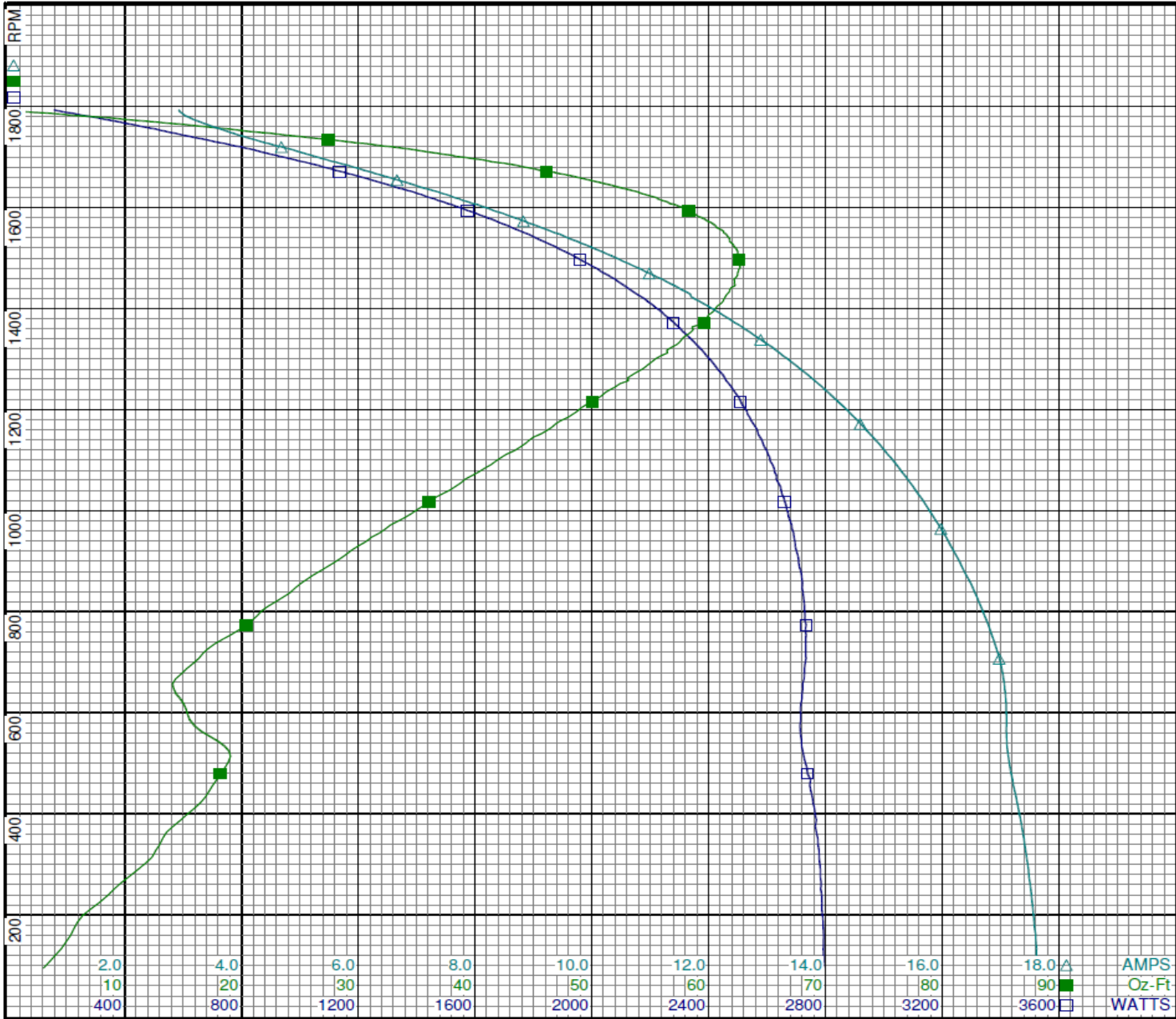
Dayton Electric Mfg. Co. Lake Forest, IL 60045 USA

Performance Data



5K044BG

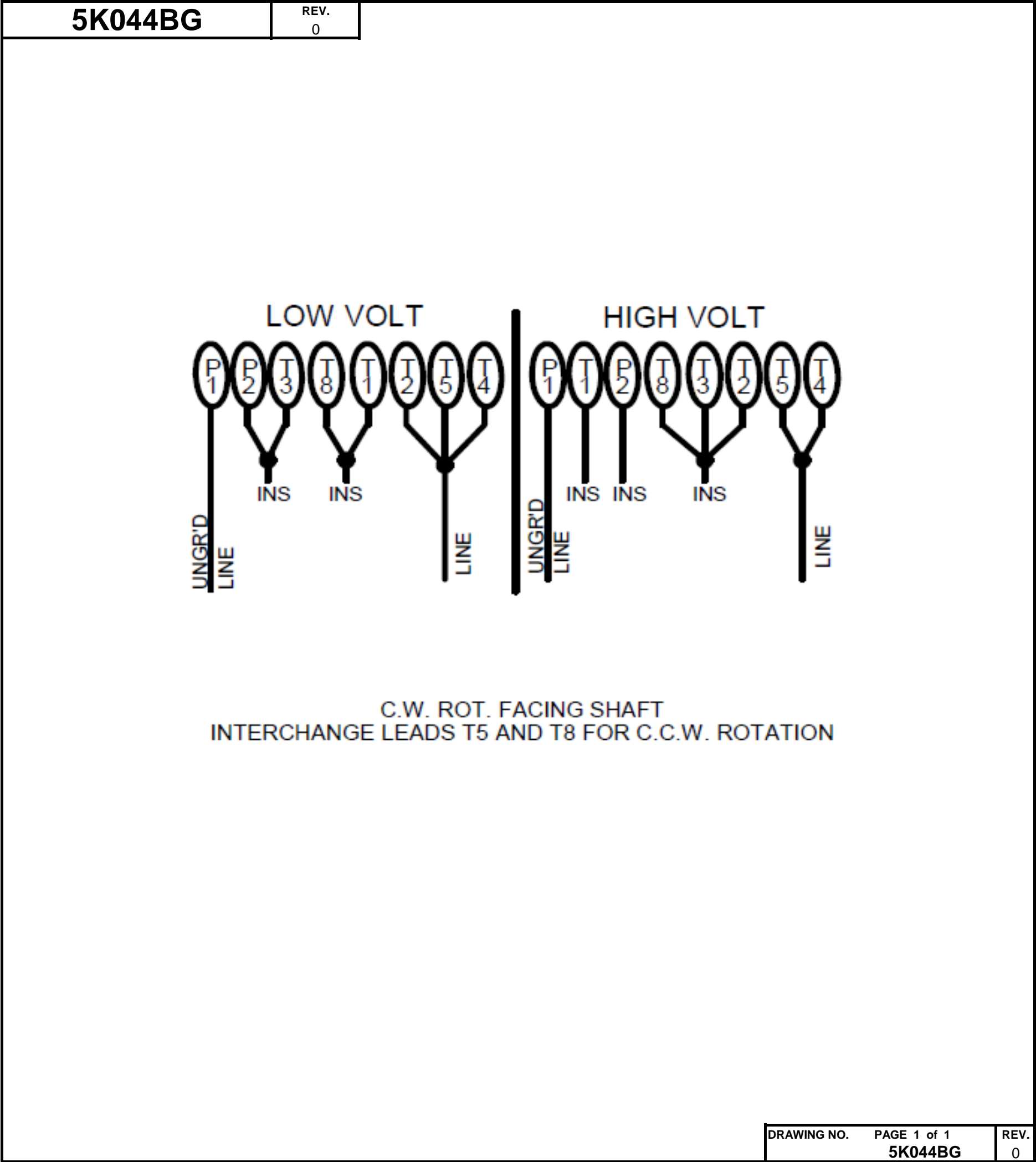
REV.  
-

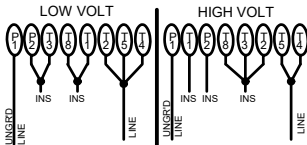


Curve Descriptions:  
Motor(1) Test 11 Run 230V 60 Hz 4P

- SPEED vs WATTS
- SPEED vs TORQUE
- △ SPEED vs ILine

Motor Ratings:  
C063GJG131901 5K044BG



**Dayton**<sup>®</sup>**AUGER DRIVE MOTOR****HP:** 1/2**VOLTS:** 115/230**AMPS:** 8.0/4.0**RPM:** 1725&1425**DUTY:** CONT**SF:** 1.0**KVA CODE:** L**ENCL:** TEFC**THERMALLY PROTECTED:** MANUAL**MFG. NO.** ☐ ☐ **PROT. CODE** ☐ 01550 **AVG. F.L. EFF.****MTR REF:** C63BXGJG-1319**FOR 50 HZ FLA 9.6/4.8 & SFA 9.6/4.8****Part No** 5K044BG**PH:** 1**HZ:** 60&50**FR:** 56YZ**INS CL:** B**AMB:** 40 °C**SFA:** 8.0/4.0**Disconnect Power Before Making Any Electrical Connections or Changes****UL**<sup>®</sup>  
E37403**CSA**<sup>®</sup>  
258501**C.W. ROT. FACING SHAFT**  
**INTERCHANGE LEADS T5 AND T8 FOR C.C.W. ROTATION****Mfd for Dayton Electric Mfg. Co., Lake Forest, IL 60045 USA****Made in Mexico**