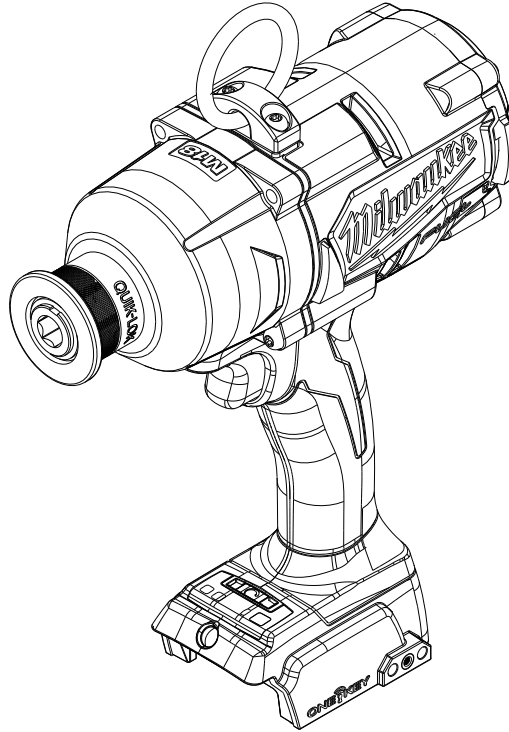




SERVICE PARTS LIST

BULLETIN NO.
54-00-2865

| SPECIFY CATALOG NO. AND SERIAL NO. WHEN ORDERING PARTS | | | REVISED BULLETIN | DATE |
|--|---------|---------------------|--------------------|-----------|
| M18™ FUEL™ ONE KEY 7/16" Hex Impact Driver | | | | Jan. 2019 |
| CATALOG NO. | 2865-20 | STARTING SERIAL NO. | K40A | |
| | | | WIRING INSTRUCTION | |



Service for Milwaukee Electric Tool ONE KEY Products
can only be performed at this
Milwaukee factory Central Repair Center:

MILWAUKEE ELECTRIC TOOL Central Repair
1013 Sycamore Avenue • Greenwood, MS 38930-7277

Please send your tool directly to this location for service.

Or

Via e-Service at: www.milwaukeetool.com/e-service
questions, please call 1.800.SAWDUST (1.800.729.3878)

Or

Return it to a MILWAUKEE *factory* Service Center location, freight prepaid and insured.
A copy of the proof of purchase should be included with the return product.

If you have questions please contact Milwaukee Product Service at:

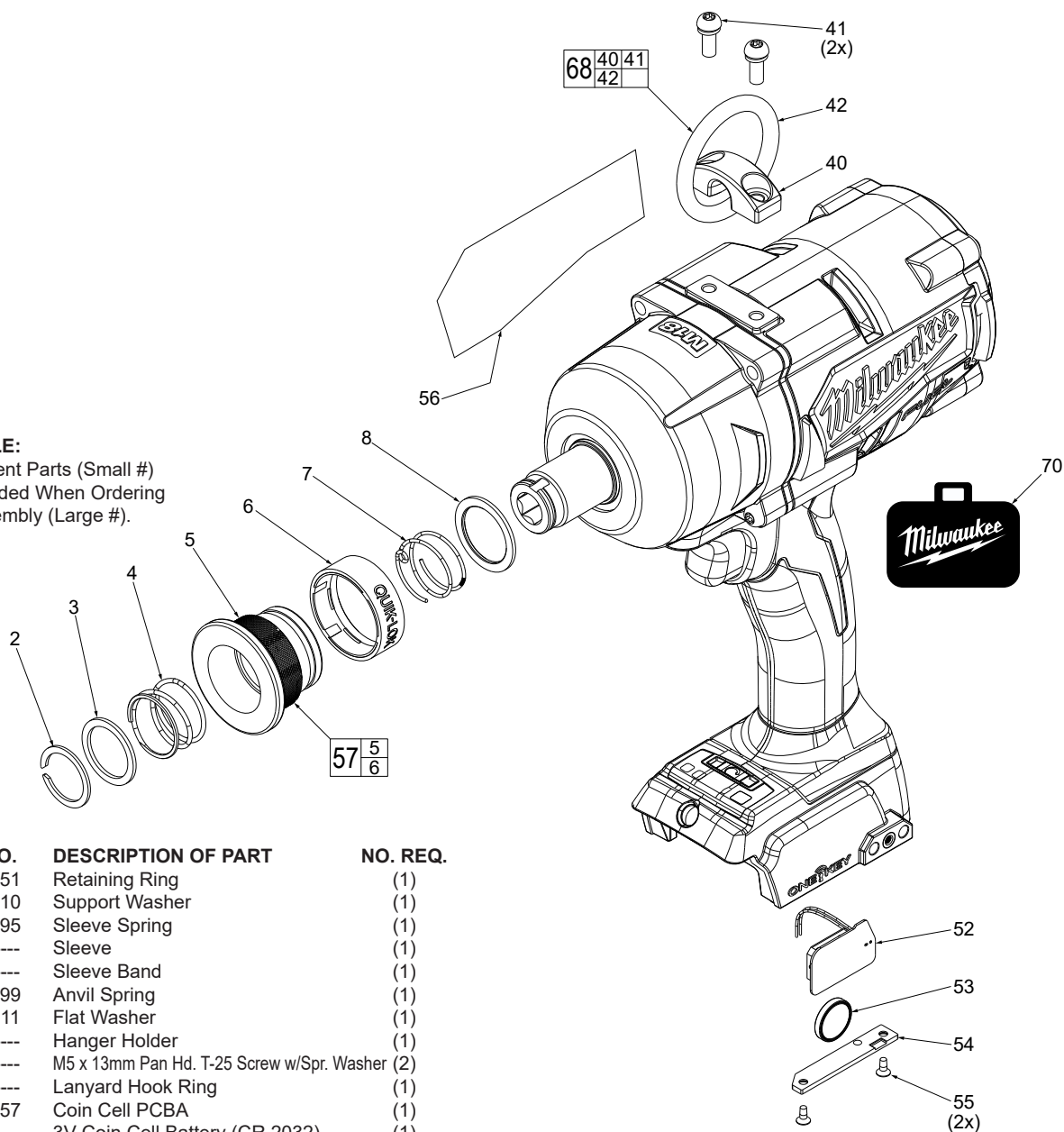
Product Technical Support via phone at: 262.783.8642

Or

Via email at: METProductSupport@milwaukeetool.com

Disassembly is not recommended and could void the warranty.

EXAMPLE:
 Component Parts (Small #)
 Are Included When Ordering
 The Assembly (Large #).



| FIG. | PART NO. | DESCRIPTION OF PART | NO. REQ. |
|------|------------|--|----------|
| 2 | 34-60-0051 | Retaining Ring | (1) |
| 3 | 44-90-0210 | Support Washer | (1) |
| 4 | 40-50-1495 | Sleeve Spring | (1) |
| 5 | ----- | Sleeve | (1) |
| 6 | ----- | Sleeve Band | (1) |
| 7 | 40-50-0099 | Anvil Spring | (1) |
| 8 | 44-90-0211 | Flat Washer | (1) |
| 40 | ----- | Hanger Holder | (1) |
| 41 | ----- | M5 x 13mm Pan Hd. T-25 Screw w/Spr. Washer | (2) |
| 42 | ----- | Lanyard Hook Ring | (1) |
| 52 | 22-09-2757 | Coin Cell PCBA | (1) |
| 53 | ----- | 3V Coin Cell Battery (CR 2032) | (1) |
| 54 | 31-15-0011 | Coin Cell Cover | (1) |
| 55 | 05-81-1100 | M2.6 x 6mm Flat Hd. Phillips Screw | (2) |
| 56 | 12-20-6520 | Service Nameplate | (1) |
| 57 | 42-76-0260 | Sleeve Assembly | (1) |
| 68 | 14-46-9310 | Lanyard Ring Kit | (1) |
| 70 | 48-55-3560 | Contractor Bag | (1) |