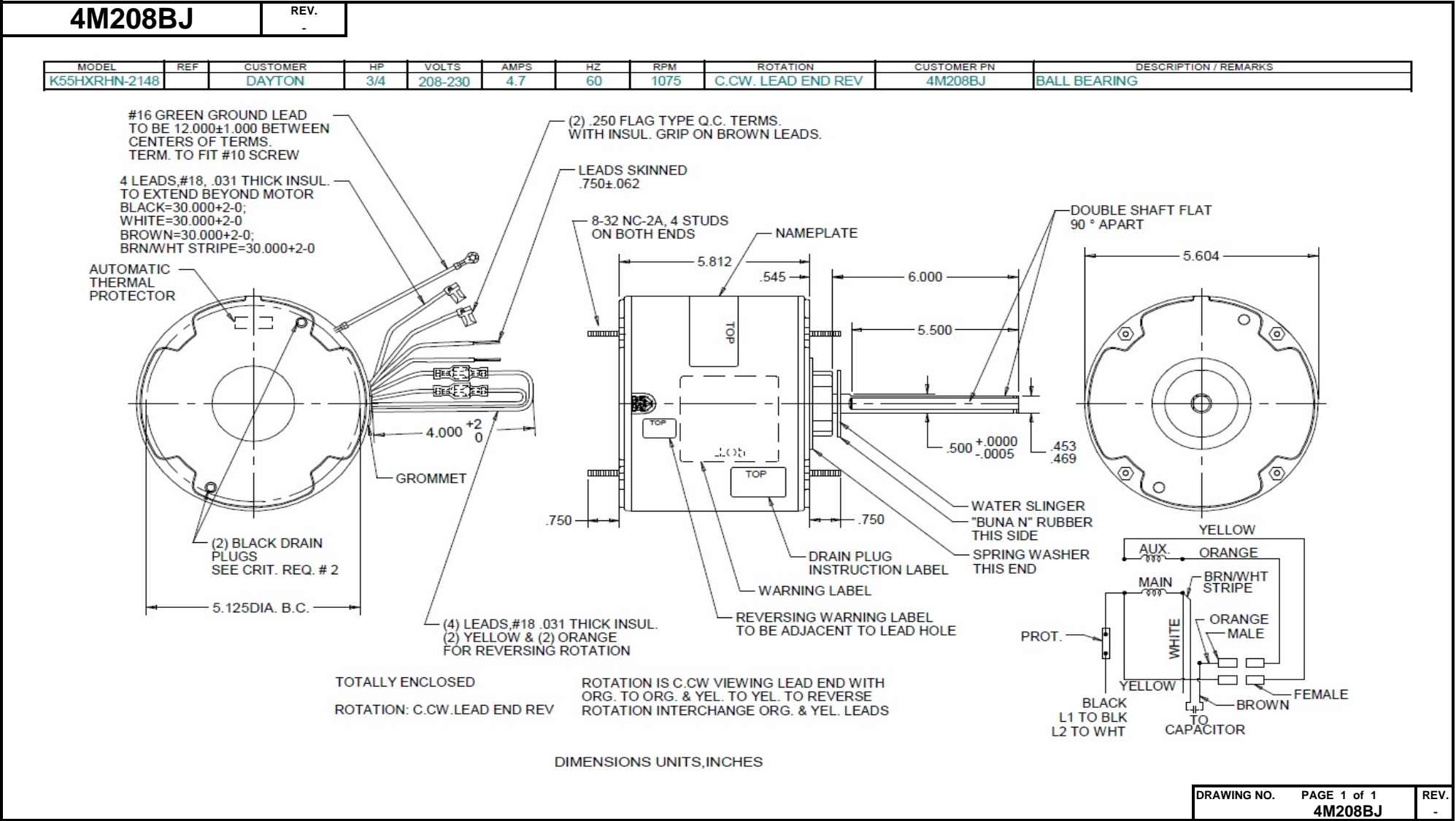


Dimensional Drawing



Performance Data



4M208BJ

REV.

-

SHADED-POLE & PSC MOTOR PERFORMANCE

HP:	3/4							
Poles:	6							
Ambient (°C):	40							
Altitude (FASL):	1000							
No. of Speeds:	1							
HIGH SPEED								
Volts:	208~230	115	208	230	277	460	100	200
HZ:	60	60	60	60	60	60	50	50
Service Factor:	1.0							
Efficiency:	@ Rated Load		63.1	63.6				
Power Factor:	@ Rated Load		87.2	87.7				
Amps:	@ No Load							
	@ Rated Load		4.7	5.2				
	@ Locked Rotor			11.3				
RPM:	@ Rated Load		1075	1075				
Torques: Oz.Ft.	Breakdown		62.8	78.9				
	Locked Rotor			14.5				
	Pull-Up							
	Rated Load		56.3	69.9				
	Service Factor		1.0	1.0				
Watts:	Rated Load		852	1049				
Temperature Rise:	@ Rated Load							
Thermal Protector:	Trip Temp (°C)		140~150	140~150				
Winding Material:	Start (Auxiliary)		Copper	Copper				
	Run (Main)		Copper	Copper				
Capacitor:	Run (MFD / Volts)	10.0 MFD	370V					
	No. of Run Capacitors	1						

MEDIUM-HIGH SPEED

HP:	3/4							
Volts:	208~230	115	208	230	277	460	100	200
HZ:	60	60	60	60	60	60	50	50
Efficiency:	@ Rated Load							
Power Factor:	@ Rated Load							
Amps:	@ No Load							
	@ Rated Load							
	@ Locked Rotor							
Torques: Oz.Ft.	Breakdown							
	Locked Rotor							
	Pull-Up							
	Rated Load							
Watts:	Rated Load							
Temperature Rise:	@ Rated Load							

DRAWING NO. PAGE 1 REV.
4M208BJ -

Dayton Electric Mfg. Co. Lake Forest, IL 60045 USA

Performance Data



4M208BJ

REV.

-

SHADED-POLE & PSC MOTOR PERFORMANCE

MEDIUM-LOW SPEED

HP:	3/4							
Volts:	208~230	115	208	230	277	460	100	200
HZ:	60	60	60	60	60	60	50	50
Efficiency:	@ Rated Load							
Power Factor:	@ Rated Load							
Amps:	@ No Load							
	@ Rated Load							
Torques: Oz.Ft.	Breakdown							
	Locked Rotor							
	Pull-Up							
	Rated Load							
Watts:	Rated Load							
Temperature Rise:	@ Rated Load							
Watts:	Rated Load							
Temperature Rise:	@ Rated Load							
Thermal Protector:	Trip Temp (°C)							
Winding Material:	Start (Auxiliary)							
	Run (Main)							

LOW SPEED

HP:	3/4							
Volts:	208~230	120	208	230	277	460	100	200
HZ:	60	60	60	60	60	60	50	50
Efficiency:	@ Rated Load							
Power Factor:	@ Rated Load							
Amps:	@ No Load							
	@ Rated Load							
Torques: Oz.Ft.	Breakdown							
	Locked Rotor							
	Pull-Up							
	Rated Load							
Watts:	Rated Load							
Temperature Rise:	@ Rated Load							

Notes:

DRAWING NO. PAGE 1 REV.
4M208BJ -

Dayton Electric Mfg. Co. Lake Forest, IL 60045 USA

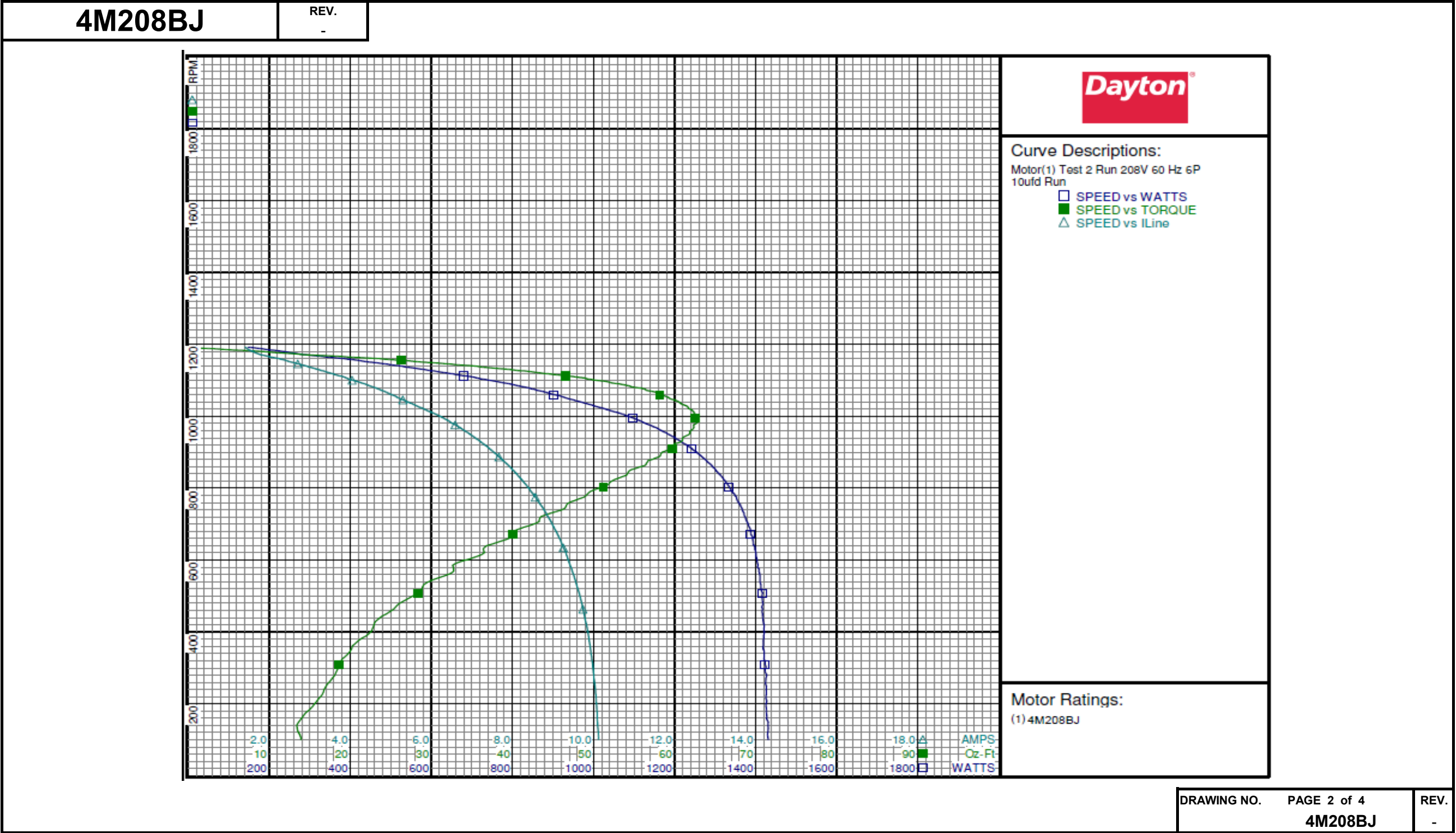
Performance Data



4M208BJ		REV. -											
Dayton Manufacturing Company													
Motor Description				Test Conditions									
Model: 4M208BJ		Test Type: Run		Run Cap: 10									
Motor ID: 1		Test Number: 2		Start Cap: 0µfd									
Poles: 6		Poles: 6		Environment:									
Volts: 208-230		Volts: 208		Tested: 1/13/2015 9:48:52 AM									
Frequency: 60		Hz: 60		Tested By: Sharp, Gerald									
HP: 3/4		Rotation:		Gear Ratio: 1:1									
Speed: 1075		Special Cond:		Bearing Friction: -0.69 Oz-Ft									
Phase: 1		Speed Conn:		Windage Torque: -2.31 Oz-Ft									
Protector: 7A150		TestBoard:		Amps Performance		Fixture #3							
Special Points	Vline (V)	Vaux (V)	Vcap (V)	Iline (A)	Imain (A)	Iaux (A)	Watts	RPM	Tq (Oz-ft)	HP	Eff (%)	PF (%)	Cap
	208.0	278.6	373.7	1.405	2.162	1.470	148.2	1192	0.00	0.000	0.0	50.7	10.4
	208.0	270.6	361.2	1.574	2.026	1.415	229.0	1181	8.68	0.122	39.8	69.9	10.4
	208.0	260.7	342.9	1.984	2.127	1.325	330.2	1166	18.86	0.262	59.2	80.0	10.2
	208.0	253.2	330.9	2.440	2.388	1.275	425.9	1154	27.21	0.374	65.5	83.9	10.2
	208.0	244.4	319.6	2.885	2.720	1.231	518.5	1140	34.82	0.473	68.0	86.4	10.2
	208.0	234.6	308.4	3.342	3.119	1.188	607.7	1126	41.56	0.557	68.4	87.4	10.2
	208.0	224.4	297.4	3.809	3.564	1.153	694.9	1110	47.47	0.627	67.4	87.7	10.3
	208.0	214.4	287.0	4.272	4.028	1.116	778.4	1093	52.25	0.680	65.1	87.6	10.3
1075 RPM	208.0	204.5	277.2	4.702	4.487	1.081	851.6	1075	56.30	0.720	63.1	87.1	10.3
	208.0	204.2	276.9	4.718	4.504	1.080	854.8	1074	56.38	0.721	62.9	87.1	10.3
	208.0	194.0	267.7	5.125	4.935	1.047	921.3	1055	58.95	0.740	59.9	86.4	10.4
	208.0	183.4	259.0	5.560	5.405	1.013	989.6	1033	60.94	0.749	56.5	85.6	10.4
	208.0	172.6	250.3	6.029	5.919	0.986	1061.5	1009	62.38	0.749	52.7	84.6	10.4
BDT OZ-FT	208.0	161.5	242.7	6.466	6.403	0.958	1121.1	984	62.83	0.736	49.0	83.4	10.5
	208.0	161.5	242.7	6.466	6.403	0.958	1121.1	984	62.83	0.736	49.0	83.4	10.5
	208.0	151.2	236.4	6.865	6.849	0.936	1173.7	956	61.84	0.704	44.7	82.2	10.5
	208.0	141.0	231.1	7.243	7.276	0.916	1219.2	926	60.53	0.667	40.8	80.9	10.5
	208.0	131.2	226.6	7.603	7.684	0.899	1260.3	894	58.27	0.620	36.7	79.7	10.5
	208.0	121.4	223.2	7.939	8.067	0.886	1293.8	858	55.65	0.569	32.8	78.4	10.5
	208.0	112.5	220.7	8.252	8.427	0.877	1324.7	820	52.25	0.510	28.7	77.2	10.5
	208.0	103.9	219.3	8.536	8.756	0.871	1348.9	779	49.09	0.455	25.2	76.0	10.5
	208.0	95.9	218.4	8.801	9.063	0.866	1368.8	734	45.34	0.396	21.6	74.8	10.5
	208.0	88.6	218.3	9.041	9.342	0.867	1386.9	686	40.73	0.333	17.9	73.7	10.5
	208.0	81.5	218.7	9.258	9.596	0.868	1398.3	634	36.50	0.276	14.7	72.6	10.5
	208.0	74.4	219.2	9.441	9.828	0.868	1403.7	580	32.72	0.226	12.0	71.5	10.5
	208.0	68.5	220.4	9.610	10.030	0.872	1412.8	520	28.81	0.178	9.4	70.7	10.5
	208.0	62.7	221.6	9.753	10.203	0.877	1415.6	456	24.86	0.135	7.1	69.8	10.5
	208.0	56.9	223.7	9.873	10.355	0.879	1419.1	389	21.96	0.102	5.3	69.1	10.4
	208.0	53.2	226.1	9.966	10.478	0.890	1423.2	317	18.81	0.071	3.7	68.7	10.4
	208.0	50.6	229.3	10.042	10.576	0.901	1425.7	239	16.76	0.048	2.5	68.3	10.4
	208.0	48.8	231.9	10.089	10.644	0.915	1427.2	157	13.88	0.026	1.4	68.0	10.5
DRAWING NO. PAGE 1 of 4												REV.	
4M208BJ												-	

Dayton Electric Mfg. Co. Lake Forest, IL 60045 USA

Performance Data



Dayton Electric Mfg. Co. Lake Forest, IL 60045 USA

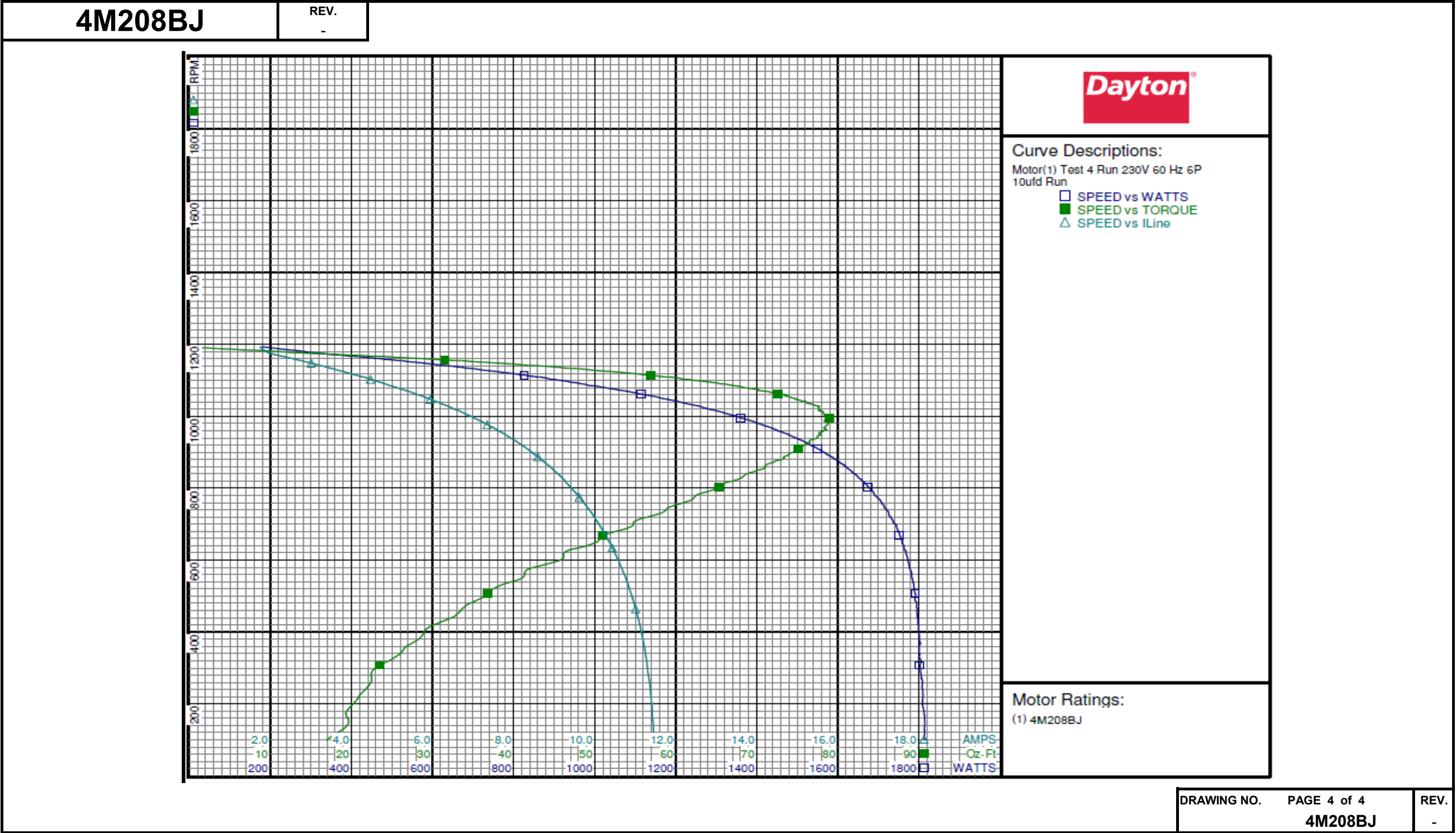
Performance Data



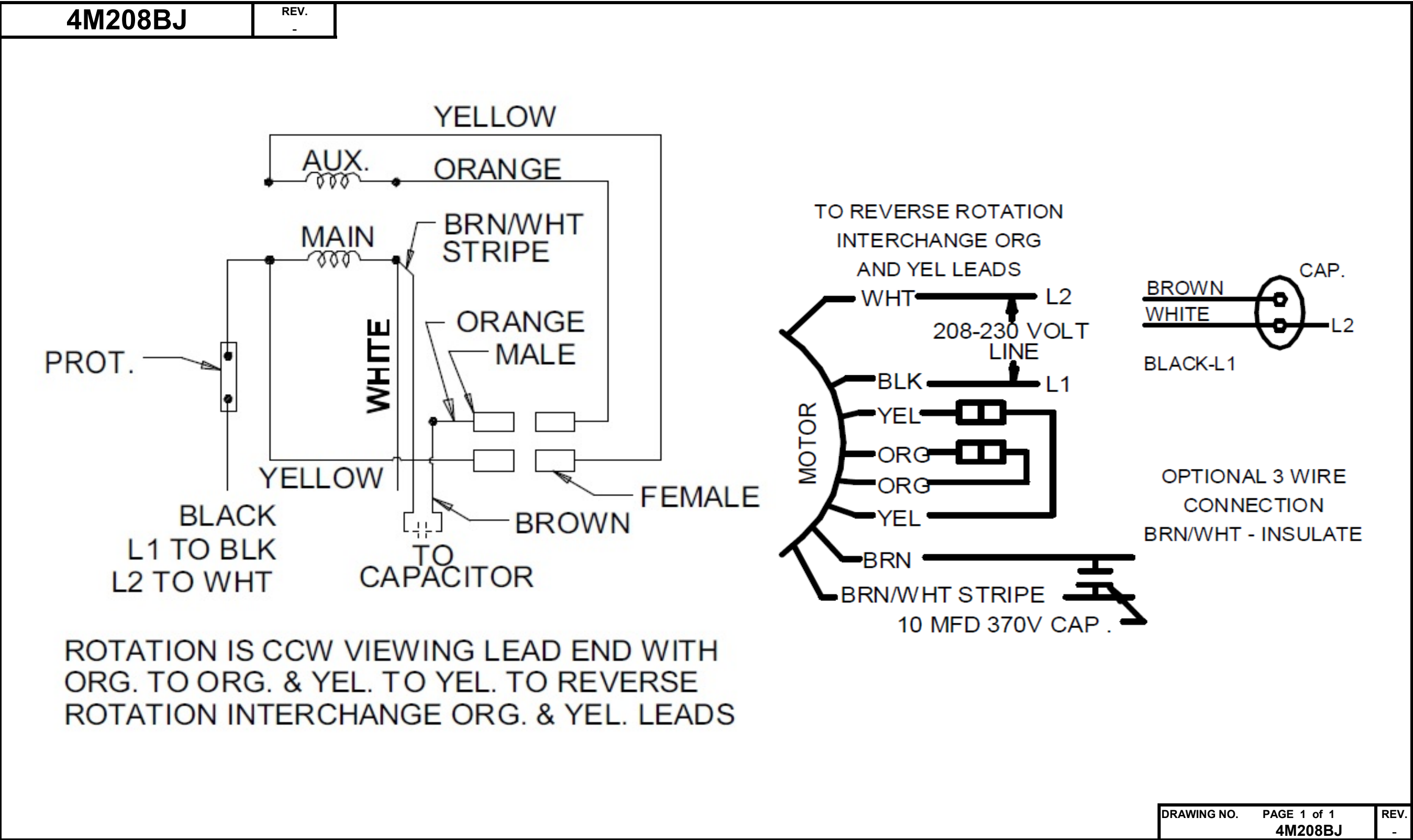
4M208BJ		REV. -												
Dayton Manufacturing Company														
Motor Description				Test Conditions										
Model: 4M208BJ		Test Type: Run		Run Cap: 10										
Motor ID: 1		Test Number: 4		Start Cap: 0µfd										
Poles: 6		Poles: 6		Environment:										
Volts: 208-230		Volts: 230		Tested: 1/13/2015 9:49:55 AM										
Frequency: 60		Hz: 60		Tested By: Sharp, Gerald										
HP: 3/4		Rotation:		Gear Ratio: 1:1										
Speed: 1075		Special Cond:		Bearing Friction: -0.67 Oz-Ft										
Phase: 1		Speed Conn:		Windage Torque: -2.28 Oz-Ft										
Protector: 7A150		TestBoard:		Amps Performance		Fixture #3								
Special Points	Vline (V)	Vaux (V)	Vcap (V)	Iline (A)	Imain (A)	Iaux (A)	Watts	RPM	Tq(Oz-ft)	HP	Eff (%)	PF (%)	Cap	
	230.0	301.2	405.7	1.747	2.591	1.591	179.5	1193	0.00	0.000	0.0	44.7	10.4	
	230.0	294.5	394.5	1.875	2.431	1.541	274.8	1181	9.94	0.140	38.0	63.7	10.4	
	230.0	285.4	377.0	2.281	2.492	1.456	401.3	1167	22.79	0.317	58.8	76.5	10.2	
	230.0	279.0	365.7	2.730	2.723	1.409	513.5	1155	32.54	0.447	65.0	81.8	10.2	
	230.0	270.2	354.4	3.201	3.059	1.364	625.0	1141	41.80	0.568	67.8	84.9	10.2	
	230.0	260.2	342.8	3.701	3.482	1.319	736.8	1127	50.34	0.675	68.4	86.6	10.2	
	230.0	249.4	331.2	4.216	3.961	1.277	846.1	1111	58.08	0.768	67.7	87.3	10.2	
	230.0	238.7	320.0	4.715	4.465	1.237	947.0	1094	64.58	0.841	66.3	87.3	10.3	
	230.0	227.6	309.3	5.217	4.974	1.199	1044.1	1076	69.67	0.892	63.8	87.0	10.3	
1075 RPM	230.0	227.1	308.8	5.242	5.001	1.198	1049.2	1075	69.92	0.895	63.6	87.0	10.3	
	230.0	216.0	298.7	5.742	5.529	1.165	1141.9	1056	73.66	0.926	60.5	86.5	10.3	
	230.0	204.8	289.0	6.236	6.060	1.132	1231.5	1034	76.76	0.945	57.2	85.9	10.4	
	230.0	192.6	279.4	6.739	6.610	1.098	1316.1	1010	78.16	0.940	53.3	84.9	10.4	
BDT OZ-FT	230.0	185.7	274.5	7.023	6.923	1.081	1361.3	995	78.92	0.935	51.2	84.3	10.4	
	230.0	181.1	271.3	7.210	7.129	1.070	1391.2	985	78.59	0.922	49.4	83.9	10.5	
	230.0	169.4	263.9	7.673	7.644	1.043	1460.1	957	78.14	0.890	45.5	82.7	10.5	
	230.0	158.0	257.6	8.109	8.133	1.020	1521.4	926	76.57	0.844	41.4	81.6	10.5	
	230.0	147.0	252.3	8.523	8.598	0.999	1574.3	893	73.85	0.785	37.2	80.3	10.5	
	230.0	136.4	248.3	8.908	9.035	0.985	1621.0	859	71.12	0.727	33.5	79.1	10.5	
	230.0	126.4	245.2	9.267	9.448	0.974	1660.8	820	67.01	0.654	29.4	77.9	10.5	
	230.0	116.8	243.2	9.593	9.830	0.966	1692.8	779	62.42	0.579	25.5	76.7	10.5	
	230.0	107.9	242.0	9.899	10.182	0.962	1724.4	735	58.55	0.512	22.1	75.7	10.5	
	230.0	99.3	241.6	10.178	10.507	0.959	1747.2	686	53.73	0.439	18.7	74.6	10.5	
	230.0	91.3	241.6	10.435	10.805	0.960	1762.4	634	48.02	0.362	15.3	73.4	10.5	
	230.0	83.8	242.1	10.656	11.070	0.962	1776.0	578	42.33	0.291	12.2	72.5	10.5	
	230.0	76.8	243.1	10.858	11.309	0.963	1788.6	519	37.42	0.231	9.6	71.6	10.5	
	230.0	69.4	244.2	11.029	11.515	0.962	1794.8	456	33.37	0.181	7.5	70.8	10.5	
	230.0	63.8	246.2	11.171	11.691	0.972	1800.8	388	28.66	0.132	5.5	70.1	10.5	
	230.0	59.2	248.9	11.285	11.838	0.983	1805.0	315	24.12	0.090	3.7	69.5	10.5	
	230.0	56.1	252.1	11.372	11.951	0.994	1809.3	239	21.67	0.062	2.5	69.2	10.5	
	230.0	54.1	254.6	11.428	12.033	1.010	1813.5	156	19.59	0.036	1.5	69.0	10.5	
											DRAWING NO.	PAGE 3 of 4		REV.
											4M208BJ			
											-			

Dayton Electric Mfg. Co. Lake Forest, IL 60045 USA

Performance Data



Wiring Diagram



Dayton[®]

CONDENSER FAN MOTOR

HP: 3/4
VOLTS: 208-230

AMPS: 4.7
RPM: 1075
DUTY: CONT

SF: 1.0
KVA CODE:
ENCL: TEAO

THERMALLY PROTECTED: AUTO

MFG. NO. PROT. CODE: 7A010

MTR REF: K55HXRHN-2148

PH: 1
HZ: 60
FR: 48YZ
INS CL: B
AMB: 60 °C
SFA:

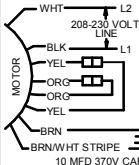
AVG.F.L
EFF.

BAR CODE

Part
No 4M208BJ

**Disconnect Power Before Making Any
Electrical Connections or Changes**

TO REVERSE ROTATION
INTERCHANGE ORG
AND YEL LEADS



OPTIONAL 3 WIRE
CONNECTION
BRN/WHT - INSULATE



E37403



258501

Mfd for Dayton Electric Mfg. Co., Lake Forest, IL 60045 USA

Made In China