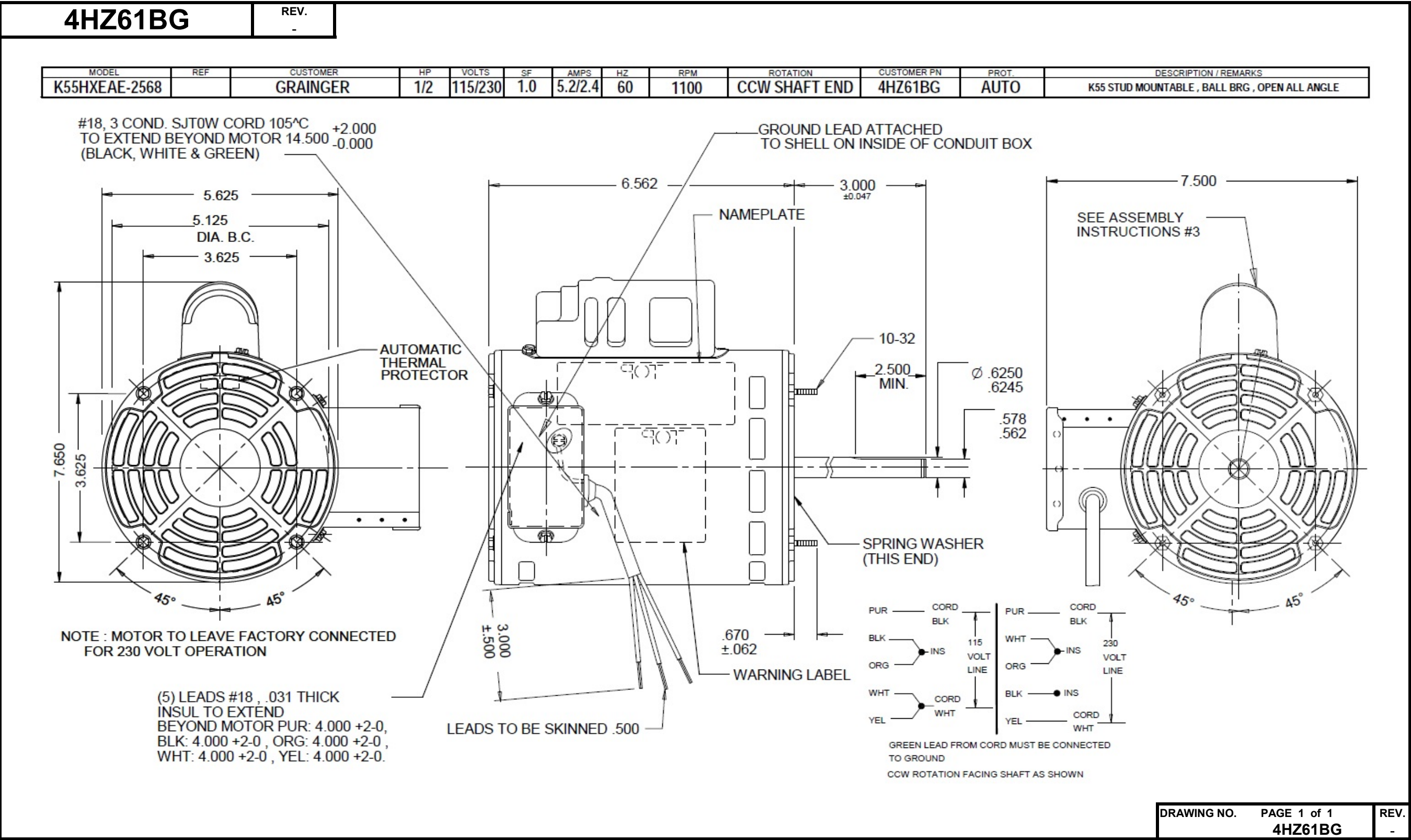


Dimensional Drawing



Performance Data



4HZ61BG

REV.
-

SHADED-POLE & PSC MOTOR PERFORMANCE

HP:	1/2							
Poles:	6							
Ambient (°C):	40							
Altitude (FASL):								
No. of Speeds:	1							
HIGH SPEED								
Volts:	115/230	115	230					
HZ:	60	60	60					
Service Factor:	1							
Efficiency:	@ Rated Load	67.4	67.5					
Power Factor:	@ Rated Load	81.8	81.9					
Amps:	@ No Load							
	@ Rated Load	6.1	3.1					
	@ Locked Rotor	16.5	8.2					
RPM:	@ Rated Load	1123	1121					
Torques:	Breakdown	52.6	52.7					
	Locked Rotor	5.6	5.4					
	Pull-Up	5.6	5.4					
	Rated Load	39	39					
	Service Factor	39	39					
Watts:	Rated Load	578	575					
Temperature Rise:	@ Rated Load	-	-					
Thermal Protector:	Trip Temp (°C)	-	-					
Winding Material:	Start (Auxiliary)	Cu	Cu					
	Run (Main)	Cu	Cu					
Capacitor(s):	Run (MFD / Volts)	7.5 mFd, 440v						
	No. of Run Capacitors							

MEDIUM-HIGH SPEED

HP:								
Volts:								
HZ:								
Efficiency:	@ Rated Load							
Power Factor:	@ Rated Load							
Amps:	@ No Load							
	@ Rated Load							
	@ Locked Rotor							
Torques: Oz.Ft. / Lb.In. (Circle One)	Breakdown							
	Locked Rotor							
	Pull-Up							
	Rated Load							
Watts:	@ Rated Load							
Temperature Rise:	@ Rated Load							

DRAWING NO. PAGE 1 of 1
4HZ61BG

REV.
-

Dayton Electric Mfg. Co. Lake Forest, IL 60045 USA

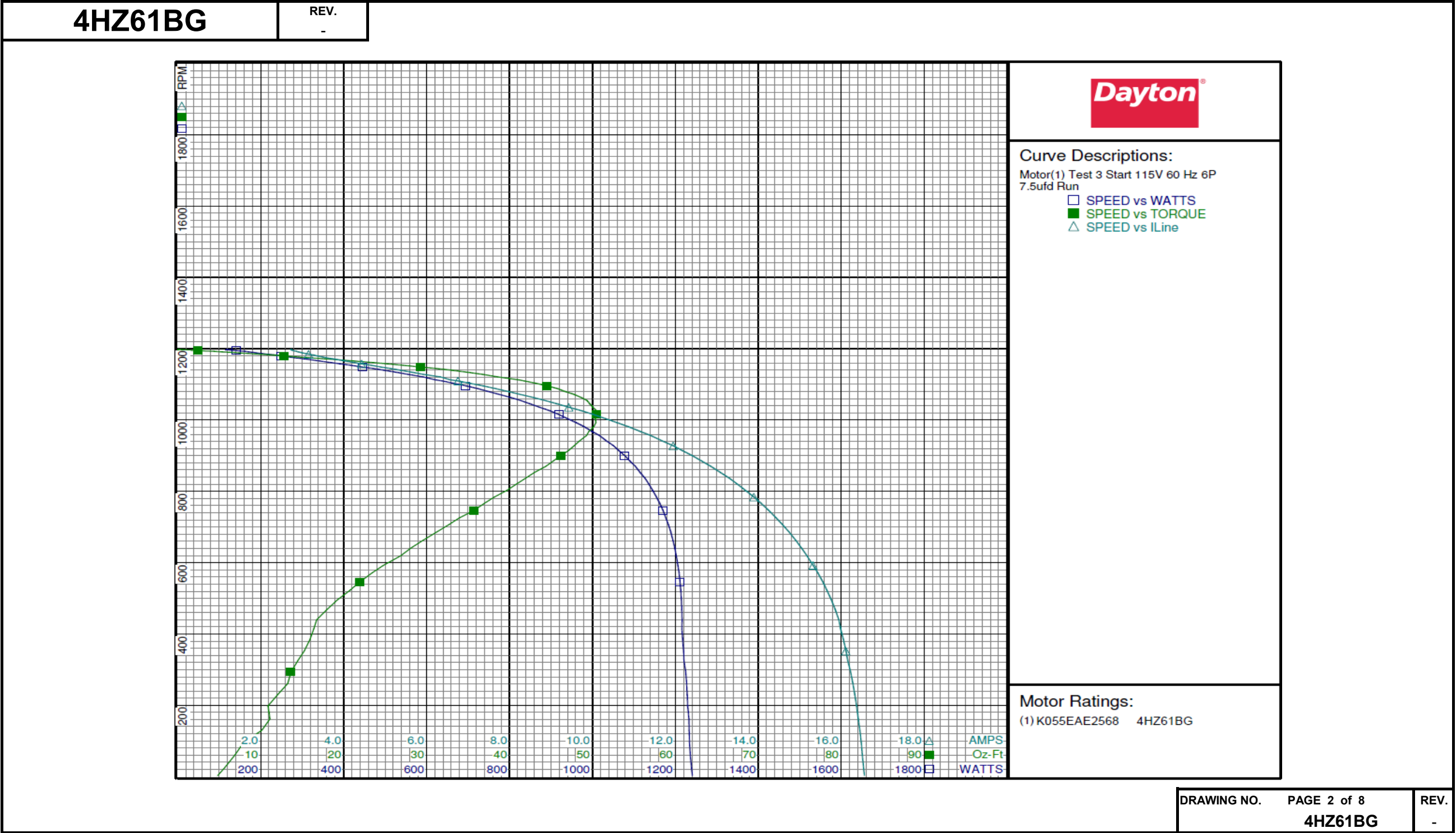
Performance Data



4HZ61BG			REV. -							
Dayton Manufacturing Company										
Motor Description				Test Conditions						
Model:	K055EAE2568 4HZ61BG		Test Type:	Start	Run Cap:	7.5				
Motor ID:			Test Number:	3	Start Cap:	0µfd				
Poles:	6		Poles:	6	Environment:	24.9 Deg C 55 % RH 964 hPa				
Volts:	115/230		Volts:	115	Tested:	8/15/2016 3:08:30 PM				
Frequency:	60		Hz:	60	Tested By:	Navarro, Susana				
HP:	1/2		Rotation:		Gear Ratio:	1:1				
Speed:	1100		Special Cond:		Bearing Friction:	-0.45 Oz-Ft				
Phase:	1		Speed Conn:		Windage Torque:	-1.68 Oz-Ft				
Protector:	7AM036-A5		TestBoard:	CMD InLine Three Phase #2 Fixture #1						
Special Points	Vline (V)	Vaux (V)	Vcap (V)	Iline (A)	Watts	RPM	Tq (Oz-ft)	HP	Eff (%)	PF (%)
	115.0	39.8	142.0	16.537	1238.8	24	5.63	0.002	0.1	65.1
	115.0	41.7	136.1	16.448	1233.0	130	10.13	0.016	0.9	65.2
	115.0	44.8	131.3	16.326	1228.6	230	12.08	0.033	2.0	65.4
	115.0	50.1	126.8	16.156	1220.6	326	14.51	0.056	3.4	65.7
	115.0	56.9	123.6	15.986	1215.7	414	16.40	0.081	5.0	66.1
	115.0	66.3	122.1	15.762	1214.4	495	19.26	0.114	7.0	67.0
	115.0	77.1	122.1	15.436	1208.9	571	23.42	0.159	9.8	68.1
	115.0	89.6	124.0	15.040	1198.3	641	28.14	0.215	13.4	69.3
	115.0	103.4	128.0	14.584	1183.0	706	32.69	0.275	17.3	70.5
	115.0	118.3	134.2	14.067	1162.3	766	36.97	0.337	21.6	71.9
13.94 AMPS	115.0	121.7	135.9	13.940	1156.7	779	37.84	0.351	22.6	72.2
	115.0	134.4	143.1	13.484	1135.4	821	40.88	0.399	26.2	73.2
	115.0	151.8	154.8	12.853	1103.3	870	44.39	0.460	31.1	74.6
	115.0	169.9	169.0	12.167	1063.4	914	47.11	0.513	36.0	76.0
	115.0	190.4	186.5	11.401	1016.6	956	49.29	0.561	41.2	77.5
	115.0	211.1	205.8	10.589	960.4	993	50.42	0.596	46.3	78.9
	115.0	232.3	226.7	9.741	897.7	1025	50.48	0.616	51.2	80.1
	115.0	254.0	249.0	8.858	827.0	1054	49.35	0.620	55.9	81.2
	115.0	275.6	272.1	7.950	747.3	1080	46.62	0.600	59.9	81.7
	115.0	297.1	295.6	7.011	662.0	1103	43.02	0.565	63.7	82.1
	115.0	312.6	313.4	6.335	592.0	1120	38.58	0.515	64.8	81.3
	115.0	334.2	337.7	5.371	497.3	1139	33.05	0.448	67.2	80.5
	115.0	349.8	356.2	4.658	416.6	1153	27.13	0.372	66.7	77.8
	115.0	364.6	373.7	4.042	342.5	1165	21.31	0.296	64.4	73.7
	115.0	376.1	387.6	3.581	281.4	1174	15.75	0.220	58.4	68.3
	115.0	384.8	398.5	3.269	235.1	1182	11.50	0.162	51.4	62.5
7.88 OZ-FT	115.0	393.2	409.2	3.036	195.3	1187	7.88	0.111	42.5	55.9
	115.0	394.6	411.1	3.002	189.3	1188	7.34	0.104	40.9	54.9
7.083 OZ-FT	115.0	395.2	412.0	2.989	187.0	1188	7.08	0.100	39.9	54.4
6.8 OZ-FT	115.0	395.9	412.9	2.975	184.4	1189	6.80	0.096	38.9	53.9
	115.0	401.7	421.3	2.863	161.5	1192	4.35	0.062	28.5	49.0
	115.0	406.5	429.3	2.765	134.1	1195	1.70	0.024	13.5	42.2
	115.0	408.3	432.8	2.727	117.3	1197	0.08	0.001	0.7	37.4
	115.0	408.4	432.9	2.725	116.4	1198	0.00	0.000	0.0	37.2
DRAWING NO.			PAGE 1 of 8			REV.				
4HZ61BG										

Dayton Electric Mfg. Co. Lake Forest, IL 60045 USA

Performance Data



Dayton Electric Mfg. Co. Lake Forest, IL 60045 USA

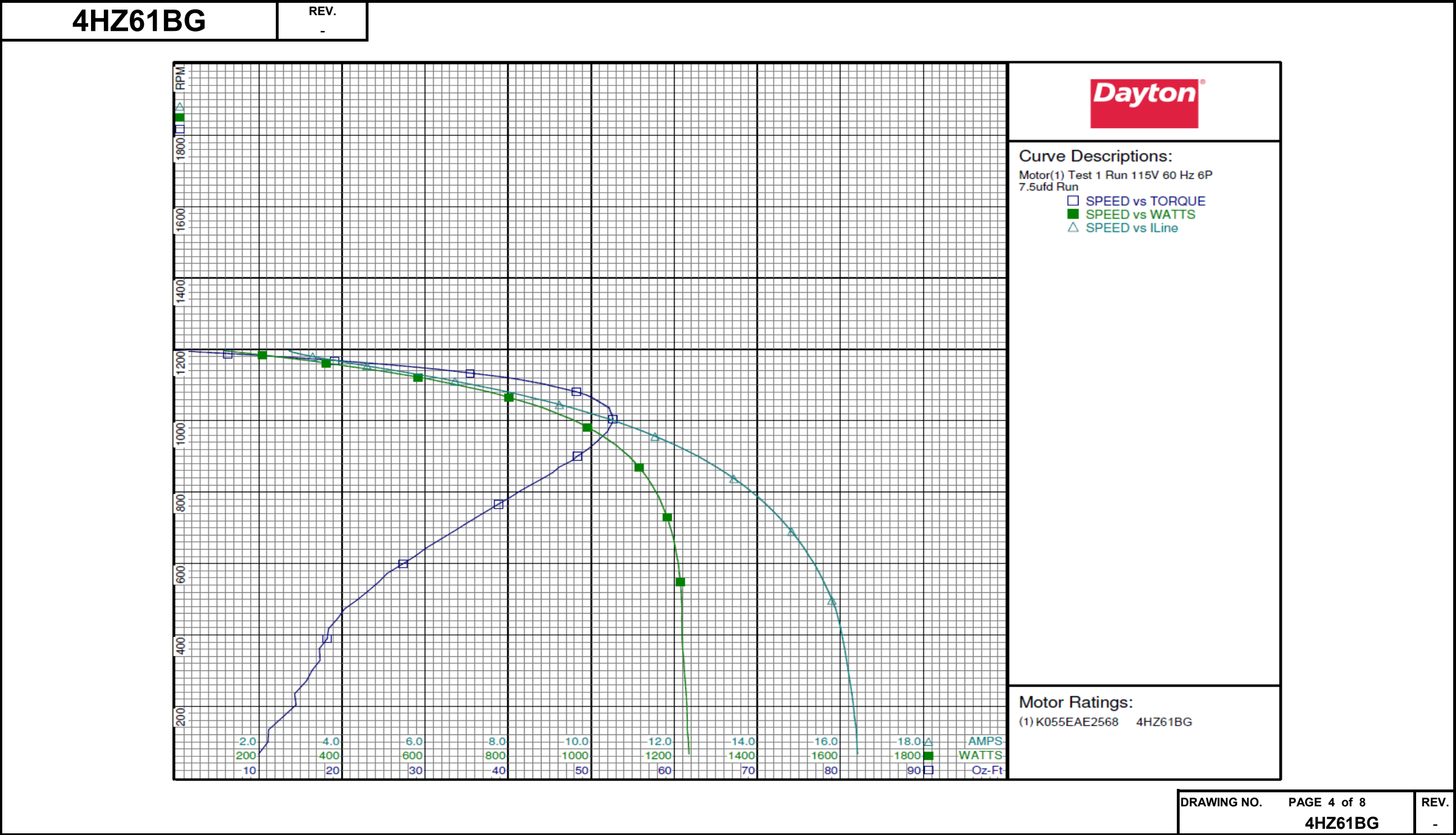
Performance Data



4HZ61BG			REV. -							
Dayton Manufacturing Company										
Motor Description					Test Conditions					
Model:	K055EAE2568 4HZ61BG		Test Type:	Run		Run Cap:	7.5			
Motor ID:			Test Number:	1		Start Cap:	0µfd			
Poles:	6		Poles:	6		Environment:	24.9 Deg C 55 % RH 964 hPa			
Volts:	115/230		Volts:	115		Tested:	8/15/2016 3:07:13 PM			
Frequency:	60		Hz:	60		Tested By:	Navarro, Susana			
HP:	1/2		Rotation:			Gear Ratio:	1:1			
Speed:	1100		Special Cond:			Bearing Friction:	-0.40 Oz-Ft			
Phase:	1		Speed Conn:			Windage Torque:	-1.83 Oz-Ft			
Protector:	7AM036-A5		TestBoard:	CMD InLine Three Phase #2 Fixture #1						
Special Points	Vline (V)	Vaux (V)	Vcap (V)	Iline (A)	Watts	RPM	Tq (Oz-ft)	HP	Eff (%)	PF (%)
	115.0	407.7	432.3	2.734	115.6	1196	0.00	0.000	0.0	36.8
	115.0	406.8	430.2	2.758	128.3	1194	1.23	0.017	10.2	40.5
	115.0	402.6	422.6	2.849	156.5	1191	4.10	0.058	27.7	47.8
	115.0	393.4	409.6	3.022	192.4	1186	7.81	0.110	42.7	55.4
	115.0	383.5	396.7	3.302	239.7	1179	12.29	0.172	53.7	63.1
	115.0	373.1	383.8	3.682	296.4	1172	17.38	0.242	61.0	70.0
	115.0	360.4	368.5	4.203	363.1	1161	23.31	0.322	66.2	75.1
	115.0	347.7	353.4	4.785	430.6	1150	28.97	0.396	68.7	78.3
	115.0	329.5	331.9	5.633	524.8	1133	35.43	0.478	68.0	81.0
39.01 OZ-FT	115.0	318.4	319.0	6.142	577.6	1123	39.01	0.522	67.4	81.8
	115.0	310.8	310.3	6.485	612.1	1116	41.18	0.547	66.7	82.1
	115.0	291.8	289.2	7.328	691.7	1096	45.35	0.592	63.8	82.1
	115.0	270.1	265.2	8.297	780.9	1072	49.38	0.630	60.2	81.8
	115.0	247.9	241.7	9.241	859.7	1045	51.50	0.641	55.6	80.9
	115.0	227.1	220.5	10.100	926.7	1016	52.51	0.635	51.1	79.8
BDT OZ-FT	115.0	218.9	212.3	10.440	952.6	1004	52.61	0.629	49.2	79.3
	115.0	204.8	198.8	10.998	991.5	981	52.20	0.609	45.9	78.4
	115.0	184.5	180.2	11.787	1043.8	944	50.80	0.571	40.8	77.0
	115.0	164.1	163.2	12.566	1090.9	901	48.35	0.518	35.5	75.5
	115.0	145.6	149.5	13.233	1125.9	854	45.35	0.461	30.5	74.0
	115.0	128.5	138.8	13.834	1154.3	803	41.46	0.396	25.6	72.6
	115.0	113.0	131.1	14.374	1176.7	747	37.49	0.333	21.1	71.2
	115.0	99.2	126.1	14.830	1193.8	689	33.38	0.274	17.1	70.0
	115.0	85.9	123.2	15.253	1206.3	620	28.77	0.212	13.1	68.8
	115.0	73.9	122.0	15.603	1214.7	548	24.42	0.159	9.8	67.7
	115.0	63.3	122.4	15.884	1218.3	472	20.31	0.114	7.0	66.7
	115.0	54.6	124.3	16.056	1218.7	389	18.22	0.084	5.2	66.0
	115.0	48.4	127.9	16.188	1224.1	300	16.41	0.059	3.6	65.8
	115.0	44.3	132.7	16.310	1230.2	203	14.48	0.035	2.1	65.6
	115.0	40.7	137.1	16.395	1233.9	100	11.10	0.013	0.8	65.4
							DRAWING NO.	PAGE 3 of 8		REV.
							4HZ61BG			-

Dayton Electric Mfg. Co. Lake Forest, IL 60045 USA

Performance Data



Performance Data



4HZ61BG			REV. -							
Dayton Manufacturing Company										
Motor Description				Test Conditions						
Model:	K055EAE2568 4HZ61BG		Test Type:	Start	Run Cap:	7.5				
Motor ID:			Test Number:	4	Start Cap:	0µfd				
Poles:	6		Poles:	6	Environment:	24.9 Deg C 55 % RH 964 hPa				
Volts:	115/230		Volts:	230	Tested:	8/15/2016 3:14:24 PM				
Frequency:	60		Hz:	60	Tested By:	Navarro, Susana				
HP:	1/2		Rotation:		Gear Ratio:	1:1				
Speed:	1100		Special Cond:		Bearing Friction:	-0.37 Oz-Ft				
Phase:	1		Speed Conn:		Windage Torque:	-1.60 Oz-Ft				
Protector:	7AM036-A5		TestBoard:	CMD InLine Three Phase #2 Fixture #1						
Special Points	Vline (V)	Vaux (V)	Vcap (V)	Iline (A)	Watts	RPM	Tq (Oz-ft)	HP	Eff (%)	PF (%)
	230.0	41.4	145.9	8.204	1234.6	23	5.41	0.002	0.1	65.4
	230.0	42.4	138.4	8.159	1231.3	131	10.16	0.016	1.0	65.6
	230.0	46.1	134.0	8.098	1225.9	233	12.82	0.036	2.2	65.8
	230.0	51.3	130.2	8.016	1218.6	325	15.34	0.059	3.6	66.1
	230.0	57.7	125.9	7.930	1212.5	413	17.01	0.084	5.1	66.5
	230.0	67.9	124.2	7.811	1210.7	495	20.18	0.119	7.3	67.4
7.75 AMPS	230.0	72.3	124.2	7.750	1208.7	526	21.64	0.136	8.4	67.8
	230.0	79.1	124.3	7.646	1204.4	571	24.52	0.167	10.3	68.5
	230.0	91.3	125.8	7.453	1193.7	639	29.02	0.221	13.8	69.6
	230.0	105.8	129.8	7.211	1176.6	708	33.79	0.285	18.0	70.9
	230.0	120.5	135.8	6.956	1155.2	766	37.65	0.343	22.2	72.2
	230.0	137.0	144.8	6.666	1128.8	820	41.80	0.408	27.0	73.6
	230.0	154.5	156.6	6.343	1093.8	870	45.01	0.466	31.8	75.0
	230.0	173.0	171.2	5.995	1052.9	915	47.68	0.519	36.8	76.4
	230.0	193.0	188.2	5.620	1006.1	956	49.67	0.565	41.9	77.8
	230.0	213.9	207.7	5.217	949.7	992	50.62	0.598	47.0	79.1
	230.0	235.2	228.7	4.794	886.6	1025	50.59	0.617	52.0	80.4
	230.0	256.6	250.9	4.359	815.9	1054	49.21	0.618	56.5	81.4
	230.0	278.4	274.4	3.901	734.8	1081	46.29	0.596	60.5	81.9
	230.0	299.3	297.3	3.448	652.0	1103	42.65	0.560	64.1	82.2
	230.0	318.7	319.3	3.028	569.0	1123	37.70	0.504	66.1	81.7
	230.0	336.4	339.7	2.633	486.8	1139	32.45	0.440	67.4	80.4
	230.0	351.4	357.5	2.300	411.6	1153	26.80	0.368	66.7	77.8
	230.0	366.3	375.3	1.994	338.0	1165	20.81	0.289	63.7	73.7
	230.0	377.2	388.4	1.779	281.9	1174	15.77	0.220	58.3	68.9
14.12 OZ-FT	230.0	380.5	392.7	1.715	262.7	1177	14.12	0.198	56.2	66.6
	230.0	386.6	400.1	1.620	233.8	1182	11.34	0.160	50.9	62.8
	230.0	396.5	412.8	1.491	190.9	1187	7.31	0.103	40.4	55.6
	230.0	403.2	422.7	1.422	163.0	1192	4.51	0.064	29.3	49.8
	230.0	408.7	431.4	1.370	136.7	1195	1.71	0.024	13.3	43.4
	230.0	410.5	434.9	1.350	120.0	1198	0.06	0.001	0.6	38.7
	230.0	410.5	435.0	1.349	119.3	1198	0.00	0.000	0.0	38.5
							DRAWING NO.	PAGE 5 of 8		REV.
							4HZ61BG		-	

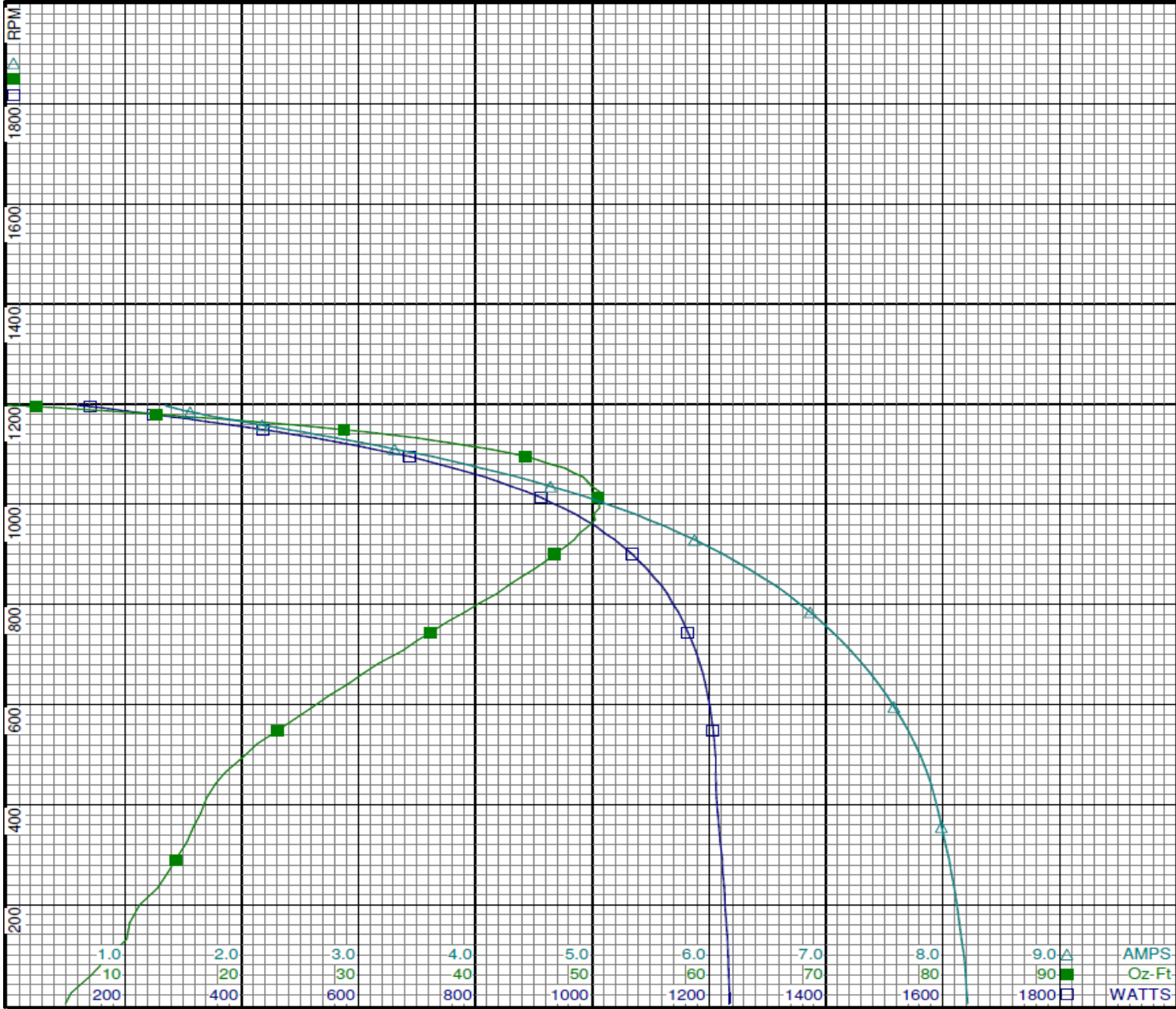
Dayton Electric Mfg. Co. Lake Forest, IL 60045 USA

Performance Data



4HZ61BG

REV.
-



Curve Descriptions:
Motor(1) Test 4 Start 230V 60 Hz 6P
7.5ufd Run
□ SPEED vs WATTS
■ SPEED vs TORQUE
△ SPEED vs ILine

Motor Ratings:
(1) K055EAE2568 4HZ61BG

Performance Data



4HZ61BG			REV. -							
Dayton Manufacturing Company										
Motor Description					Test Conditions					
Model:	K055EAE2568 4HZ61BG		Test Type:	Run	Run Cap:	7.5				
Motor ID:			Test Number:	2	Start Cap:	0µfd				
Poles:	6		Poles:	6	Environment:	24.9 Deg C 55 % RH 964 hPa				
Volts:	115/230		Volts:	230	Tested:	8/15/2016 3:12:56 PM				
Frequency:	60		Hz:	60	Tested By:	Navarro, Susana				
HP:	1/2		Rotation:		Gear Ratio:	1:1				
Speed:	1100		Special Cond:		Bearing Friction:	-0.35 Oz-Ft				
Phase:	1		Speed Conn:		Windage Torque:	-1.68 Oz-Ft				
Protector:	7AM036-A5		TestBoard:	CMD InLine Three Phase #2 Fixture #1						
Special Points	Vline (V)	Vaux (V)	Vcap (V)	Iline (A)	Watts	RPM	Tq (Oz-ft)	HP	Eff (%)	PF (%)
	230.0	409.9	434.5	1.352	117.9	1196	0.00	0.000	0.0	37.9
	230.0	408.5	431.6	1.367	131.6	1194	1.44	0.021	11.6	41.9
	230.0	403.6	423.4	1.416	159.4	1190	4.21	0.060	27.9	48.9
	230.0	394.2	410.2	1.503	194.3	1186	7.84	0.111	42.5	56.2
	230.0	384.6	397.8	1.634	237.7	1179	12.14	0.170	53.5	63.2
	230.0	374.8	385.6	1.813	290.5	1171	17.19	0.240	61.5	69.7
	230.0	362.4	370.5	2.074	358.1	1161	23.00	0.318	66.2	75.1
	230.0	348.3	353.4	2.391	433.2	1148	28.81	0.394	67.8	78.8
	230.0	331.1	333.1	2.777	518.2	1133	35.12	0.474	68.2	81.1
39 OZ-FT	230.0	318.6	318.6	3.054	575.3	1121	39.00	0.521	67.5	81.9
	230.0	313.1	312.4	3.177	599.6	1116	40.57	0.539	67.1	82.0
	230.0	292.9	289.5	3.637	688.7	1095	45.33	0.591	64.0	82.3
	230.0	272.4	267.0	4.081	769.3	1072	49.06	0.626	60.7	82.0
	230.0	250.1	243.1	4.556	850.5	1045	51.49	0.640	56.2	81.2
	230.0	228.6	221.1	4.999	920.3	1014	52.54	0.634	51.4	80.0
BDT OZ-FT	230.0	222.0	214.6	5.132	940.4	1004	52.74	0.630	50.0	79.7
	230.0	206.9	200.0	5.432	982.9	980	52.29	0.610	46.3	78.7
	230.0	186.2	181.2	5.830	1036.2	942	50.96	0.572	41.2	77.3
	230.0	166.6	164.8	6.196	1080.2	900	48.73	0.522	36.0	75.8
	230.0	148.2	151.2	6.534	1117.7	854	45.86	0.466	31.1	74.4
	230.0	139.2	145.7	6.709	1135.0	824	44.23	0.434	28.5	73.6
	230.0	114.8	132.7	7.107	1170.2	746	38.19	0.339	21.6	71.6
	230.0	100.7	127.7	7.342	1188.0	685	34.07	0.278	17.4	70.4
	230.0	87.3	124.8	7.548	1201.8	619	29.83	0.220	13.6	69.2
	230.0	75.6	123.9	7.719	1209.7	548	25.14	0.164	10.1	68.1
	230.0	64.4	124.2	7.859	1213.5	470	20.95	0.117	7.2	67.1
	230.0	55.7	126.8	7.950	1215.2	388	18.66	0.086	5.3	66.5
	230.0	49.5	131.8	8.020	1222.7	300	17.23	0.061	3.8	66.3
	230.0	44.7	135.1	8.080	1227.0	202	14.62	0.035	2.1	66.0
	230.0	42.0	140.5	8.122	1231.7	99	11.50	0.014	0.8	65.9
DRAWING NO.									PAGE 7 of 8	
4HZ61BG									REV.	
-									-	

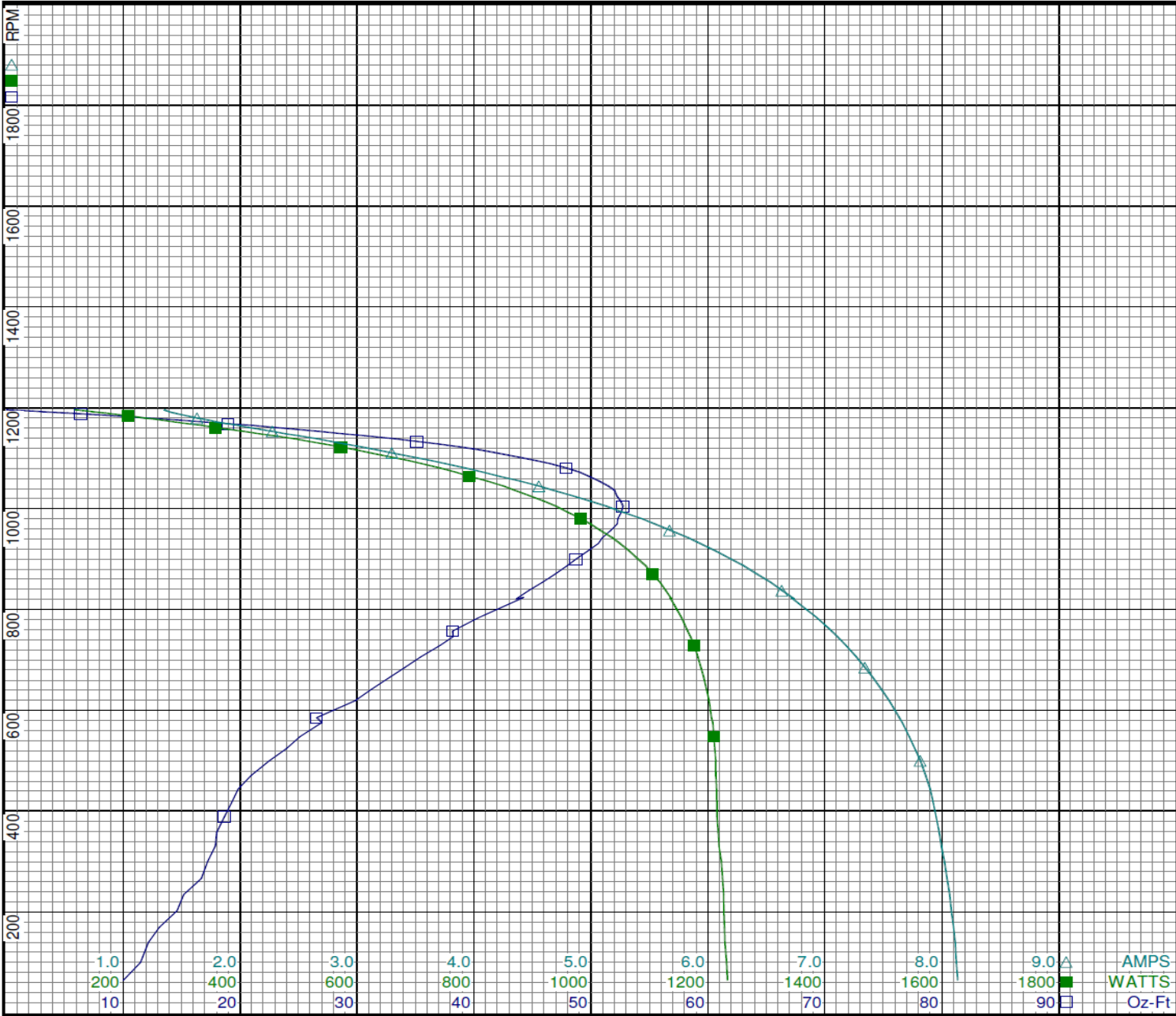
Dayton Electric Mfg. Co. Lake Forest, IL 60045 USA

Performance Data



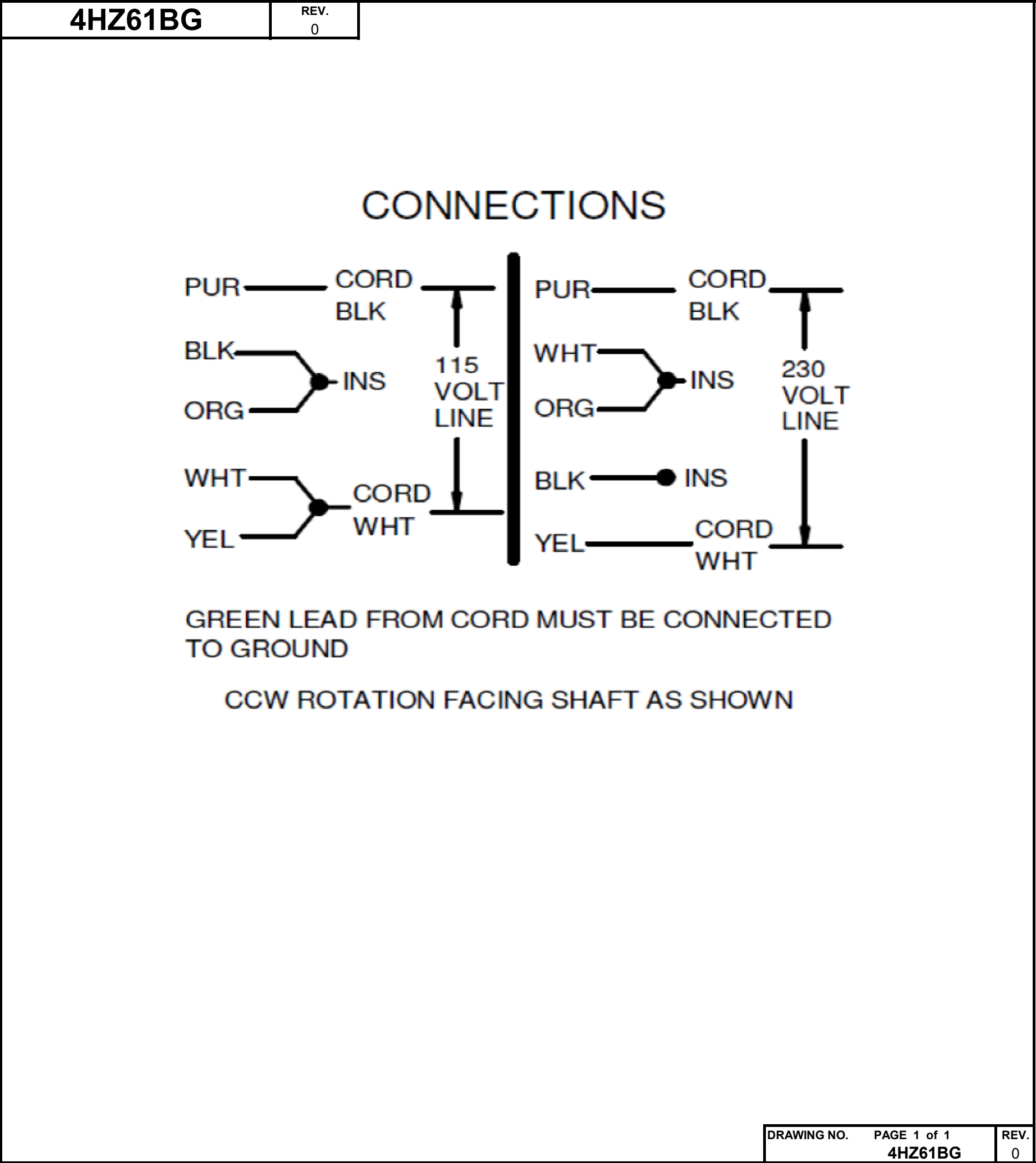
4HZ61BG

REV.
-



Curve Descriptions:
Motor(1) Test 2 Run 230V 60 Hz 6P
7.5ufd Run
□ SPEED vs TORQUE
■ SPEED vs WATTS
△ SPEED vs ILine

Motor Ratings:
(1) K055EAE2568 4HZ61BG

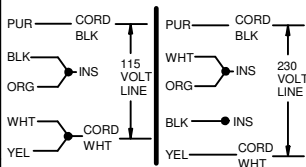


Dayton®

DIRECT DRIVE BLOWER MOTOR

HP: 1/2**VOLTS:** 115/230**AMPS:** 5.2/2.4**RPM:** 1100**DUTY:** CONT**SF:** 1.0**KVA CODE:** B**ENCL:** OAO**THERMALLY PROTECTED:** AUTOMFG. NO. PROT. CODE: **MTR REF:** K55HXEAE-2568**PH:** 1**HZ:** 60**FR:** 48Y**INS CL:** B**AMB:** 40 °C**SFA:** 5.2/2.4AVG. F.L.
EFF.**[BAR CODE]**Part
No **4HZ61BG****Disconnect Power Before Making Any
Electrical Connections or Changes**

CONNECTIONS

**GREEN LEAD FROM CORD MUST BE CONNECTED
TO GROUND****CCW ROTATION FACING SHAFT AS SHOWN****Mfd for Dayton Electric Mfg. Co., Lake Forest, IL 60045 USA**