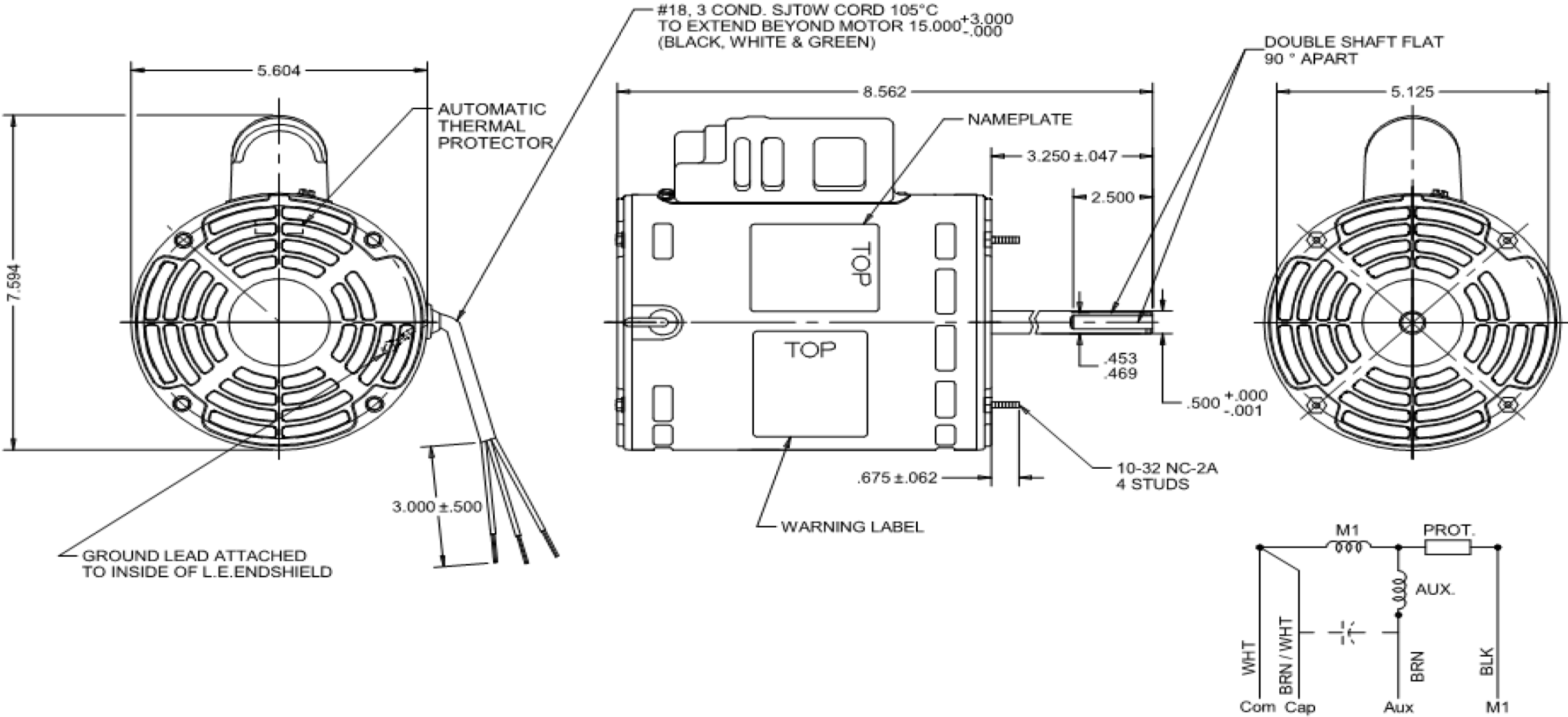


Dimensional Drawing



4HZ60BH	REV. -
---------	-----------

MODEL	REF	CUSTOMER	HP	VOLTS	AMPS	HZ	RPM	ROTATION	CUSTOMER PN	DESCRIPTION / REMARKS
K55HXRLB-2208	E41384	DAYTON	1/6	115	2.3	60	1650	CW. LEAD	4HZ60BH	BALL BEARING



DIMENSIONS UNITS, INCHES

DRAWING NO.	PAGE 1 of 1	REV.
4HZ60BH		-

Dayton Electric Mfg. Co. Lake Forest, IL 60045 USA

# Performance Data



**4HZ60BH**

REV.  
-

## SHADED-POLE & PSC MOTOR PERFORMANCE

HP:	1/6							
Poles:	4							
Ambient (°C):	40							
Altitude (FASL):	1000							
No. of Speeds:	1							
HIGH SPEED								
Volts:	115	120	208	230	277	460	100	200
HZ:	60	60	60	60	60	60	50	50
Service Factor:	1	1						
Efficiency:	@ Rated Load	60.2						
Power Factor:	@ Rated Load	91.9						
Amps:	@ No Load	1.3						
	@ Rated Load	2.3						
	@ Locked Rotor	5.5						
RPM:	@ Rated Load	1650						
Torques: Oz.Ft. / Lb.In. (Circle One)	Breakdown	14.1						
	Locked Rotor	4						
	Pull-Up							
	Rated Load	10						
	Service Factor	1						
Watts:	Rated Load	243						
Temperature Rise:	@ Rated Load							
Thermal Protector:	Trip Temp (°C)	140~150						
Winding Material:	Start (Auxiliary)	Al						
	Run (Main)	Al						
Capacitor:	Run (MFD / Volts)	7.5 MFD 370 V						
	No. of Run Capacitors	1						
MEDIUM-HIGH SPEED								
HP:								
Volts:		120	208	230	277	460	100	200
HZ:		60	60	60	60	60	50	50
Efficiency:	@ Rated Load							
Power Factor:	@ Rated Load							
Amps:	@ No Load							
	@ Rated Load							
	@ Locked Rotor							
Torques: Oz.Ft. / Lb.In. (Circle One)	Breakdown							
	Locked Rotor							
	Pull-Up							
	Rated Load							
Watts:	Rated Load							
Temperature Rise:	@ Rated Load							

DRAWING NO. PAGE 1 REV.  
4HZ60BH -

**Dayton Electric Mfg. Co. Lake Forest, IL 60045 USA**

## Performance Data



4HZ60BH						REV. -		
SHADED-POLE & PSC MOTOR PERFORMANCE								
MEDIUM-LOW SPEED								
HP:								
Volts:		120	208	230	277	460	100	200
HZ:		60	60	60	60	60	50	50
Efficiency:	@ Rated Load							
Power Factor:	@ Rated Load							
Amps:	@ No Load							
	@ Rated Load							
Torques: Oz.Ft. / Lb.In.	Breakdown							
(Circle One)	Locked Rotor							
	Pull-Up							
	Rated Load							
Watts:	Rated Load							
Temperature Rise:	@ Rated Load							
Watts:	Rated Load							
Temperature Rise:	@ Rated Load							
Thermal Protector:	Trip Temp (°C)							
Winding Material:	Start (Auxiliary)							
	Run (Main)							
LOW SPEED								
HP:								
Volts:		120	208	230	277	460	100	200
HZ:		60	60	60	60	60	50	50
Efficiency:	@ Rated Load							
Power Factor:	@ Rated Load							
Amps:	@ No Load							
	@ Rated Load							
Torques: Oz.Ft. / Lb.In.	Breakdown							
(Circle One)	Locked Rotor							
	Pull-Up							
	Rated Load							
Watts:	Rated Load							
Temperature Rise:	@ Rated Load							
Notes:								
DRAWING NO.      PAGE 1 REV.      - <b>4HZ60BH</b>								

# Performance Data



4HZ60BH		REV. -											
Dayton Manufacturing Company													
Filtered													
Motor Description				Test Conditions									
Model:		K55HXRLB-2208		Test Type:		Run		Run Cap:		7.5			
Motor ID:		4HZ60BH		Test Number:		3		Start Cap:		0µfd			
Poles:		4		Poles:		4		Environment:					
Volts:		115		Volts:		115		Tested:		7/16/2015 1:37:05 PM			
Frequency:		60		Hz:		60		Tested By:		Liu, Bingmin			
HP:		1/6		Rotation:		CW		Gear Ratio:		1:1			
Speed:		1650		Special Cond:				Bearing Friction:		-0.05 Oz-Ft			
Phase:		1		Speed Conn:		HI		Windage Torque:		-0.39 Oz-Ft			
Protector:		7AM036 A5		TestBoard:		NMQC Plotter Fixture #1							
Special Points	Vline (V)	Vaux (V)	Vcap (V)	Iline (A)	Imain (A)	Iaux (A)	Watts	RPM	Tq (Oz-ft)	HP	Eff (%)	PF (%)	Cap
	115.0	268.0	289.7	1.142	1.209	0.810	79.0	1787	0.000	0.000	0.0	0.0	7.4
	115.0	266.1	285.8	1.194	1.160	0.798	92.9	1779	0.963	0.020	15.1	0.0	7.4
	115.0	258.4	272.3	1.375	1.106	0.763	129.0	1757	3.397	0.071	41.5	0.0	7.4
	115.0	248.8	260.1	1.578	1.207	0.723	156.8	1734	5.228	0.108	52.0	0.0	7.4
	115.0	241.1	251.7	1.746	1.349	0.697	176.6	1712	6.518	0.133	56.2	0.0	7.3
	115.0	233.4	242.4	1.944	1.524	0.671	200.7	1691	7.856	0.158	58.8	0.0	7.3
8.2 OZ-FT	115.0	231.3	240.0	1.996	1.573	0.665	206.7	1685	8.200	0.164	59.4	0.0	7.4
	115.0	225.5	233.2	2.144	1.714	0.646	224.2	1668	9.044	0.180	59.8	0.0	7.3
1650 RPM	115.0	218.9	225.9	2.308	1.879	0.626	242.7	1650	9.963	0.196	60.2	0.0	7.3
	115.0	216.7	223.7	2.358	1.931	0.619	248.4	1644	10.203	0.200	60.0	0.0	7.3
	115.0	208.8	215.8	2.542	2.129	0.595	268.1	1618	11.078	0.213	59.4	0.0	7.3
	115.0	202.0	208.9	2.713	2.311	0.574	284.8	1590	11.694	0.221	58.0	0.0	7.3
	115.0	195.0	202.1	2.878	2.485	0.551	302.2	1559	12.343	0.229	56.6	0.0	7.2
	115.0	185.0	192.0	3.134	2.752	0.525	329.0	1526	13.123	0.238	54.1	0.0	7.3
	115.0	174.7	181.4	3.404	3.048	0.499	355.9	1490	13.627	0.242	50.7	0.0	7.3
	115.0	166.7	174.6	3.585	3.255	0.477	373.2	1451	13.884	0.240	47.9	0.0	7.3
	115.0	158.2	167.9	3.765	3.462	0.456	390.2	1408	14.076	0.236	45.1	0.0	7.2
	115.0	149.3	160.8	3.965	3.690	0.435	408.7	1361	14.083	0.228	41.6	0.0	7.2
BDT OZ-FT	115.0	147.6	159.5	4.005	3.736	0.431	412.3	1351	14.099	0.227	41.0	0.0	7.2
	115.0	140.4	154.0	4.165	3.919	0.415	426.3	1310	13.994	0.218	38.2	0.0	7.2
	115.0	131.3	147.3	4.361	4.145	0.397	443.3	1255	13.705	0.205	34.5	0.0	7.1
	115.0	122.7	141.9	4.540	4.354	0.381	458.3	1196	13.306	0.189	30.8	0.0	7.1
	115.0	114.7	137.5	4.706	4.548	0.368	471.6	1131	12.865	0.173	27.4	0.0	7.1
	115.0	106.9	133.8	4.864	4.735	0.356	484.9	1061	12.368	0.156	24.0	0.0	7.1
	115.0	98.4	130.2	5.007	4.917	0.347	496.8	986	11.599	0.136	20.4	0.0	7.1
	115.0	90.4	127.2	5.137	5.069	0.341	506.2	905	10.639	0.115	16.9	0.0	7.1
	115.0	82.8	125.2	5.270	5.220	0.333	515.2	818	9.787	0.095	13.8	0.0	7.1
	115.0	75.4	123.6	5.383	5.360	0.327	522.4	724	8.931	0.077	11.0	0.0	7.0
	115.0	67.9	122.6	5.473	5.476	0.324	527.7	623	8.055	0.060	8.4	0.0	7.0
	115.0	61.4	123.9	5.534	5.562	0.329	530.7	517	7.317	0.045	6.3	0.0	7.1
	115.0	56.5	126.4	5.592	5.640	0.337	534.7	403	6.622	0.032	4.4	0.0	7.1
	115.0	52.5	128.3	5.652	5.718	0.341	540.1	282	5.890	0.020	2.7	0.0	7.1
	115.0	48.1	130.7	5.701	5.786	0.347	544.7	153	5.125	0.009	1.3	0.0	7.1
										DRAWING NO.	PAGE 1 of 2		REV.
										4HZ60BH			
										-			

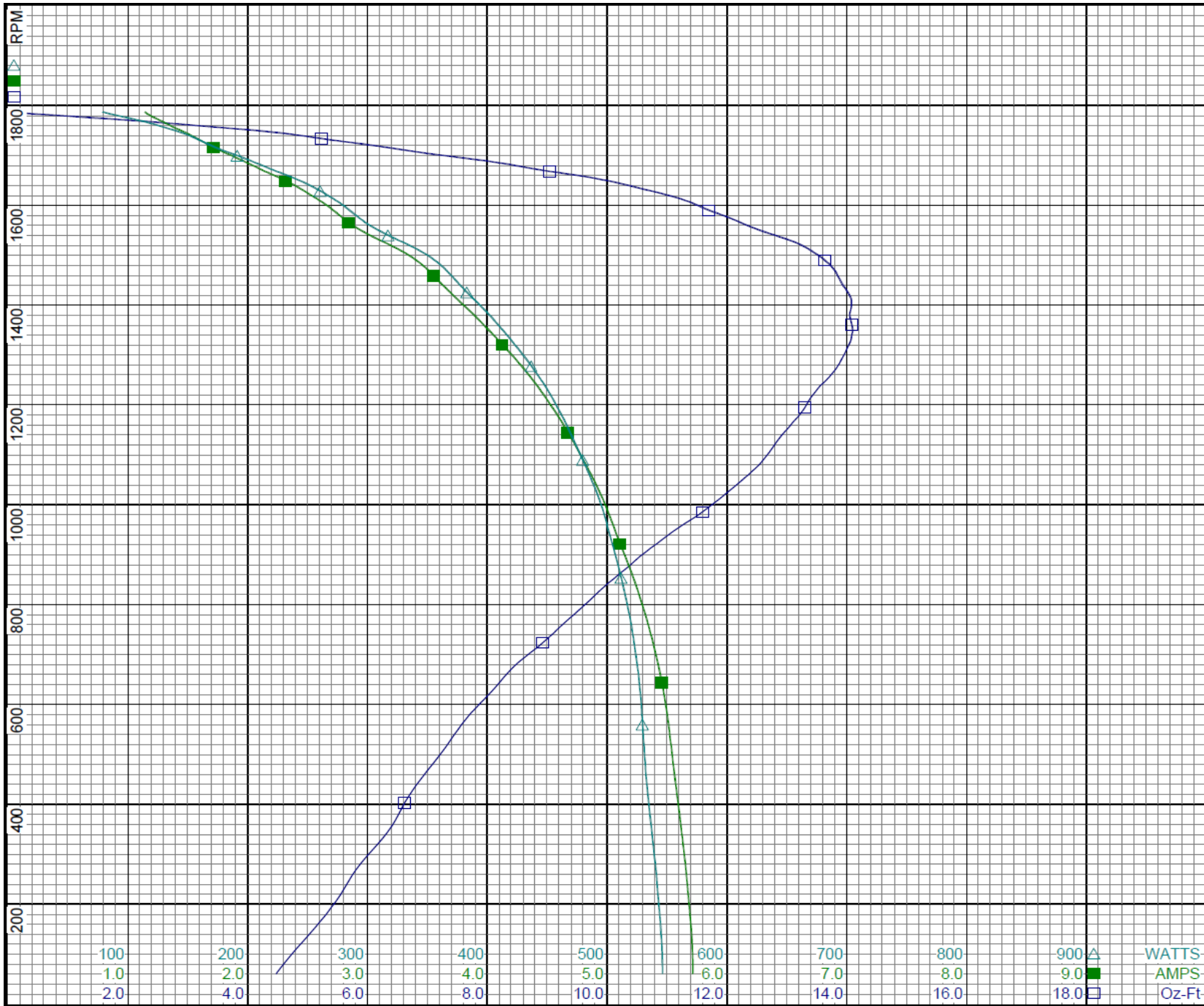
Dayton Electric Mfg. Co. Lake Forest, IL 60045 USA

# Performance Data



4HZ60BH

REV.  
-



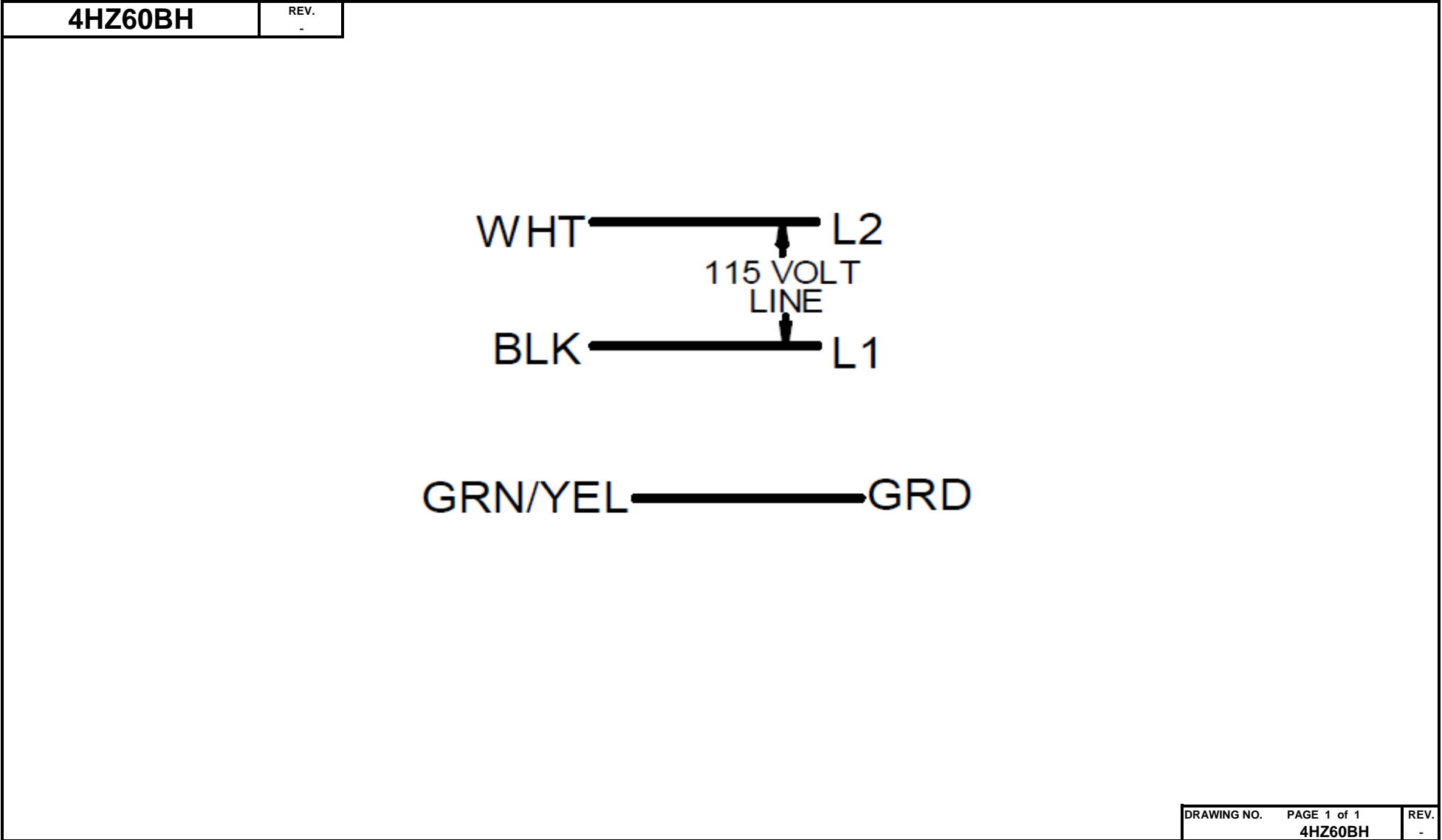
Curve Descriptions:  
Motor(1) Test 3 Run 115V 60 Hz 4P  
HI CW 7.5urfd Run Filtered Data  
□ SPEED vs TORQUE  
■ SPEED vs ILine  
△ SPEED vs WATTS

Motor Ratings:  
4HZ60BH

DRAWING NO. PAGE 2 of 2  
4HZ60BH

REV.  
-

Dayton Electric Mfg. Co. Lake Forest, IL 60045 USA



**Dayton**<sup>®</sup>**DIRECT DRIVE  
BLOWER MOTOR****HP:** 1/6  
**VOLTS:** 115**AMPS:** 2.3  
**RPM:** 1650  
**DUTY:** CONT**SF:** 1.00  
**KVA CODE:**  
**ENCL:** OAO**THERMALLY PROTECTED:** AUTO**MFG. NO.**   **PROT. CODE:** 7A010**MTR REF:** K55HXRLB-2208**BAR CODE****Part**  
**No** 4HZ60BH**PH:** 1  
**HZ:** 60  
**FR:** 48YZ  
**INS CL:** B  
**AMB:** 40 °C  
**SFA:****Disconnect Power Before Making Any  
Electrical Connections or Changes**WHT ——— L2  
                  ↓  
          115 VOLT  
          LINE

BLK ——— L1

GRN/YEL ——— GRD



E37403



258501

Mfd for Dayton Electric Mfg. Co., Lake Forest, IL 60045 USA

 Made In China