

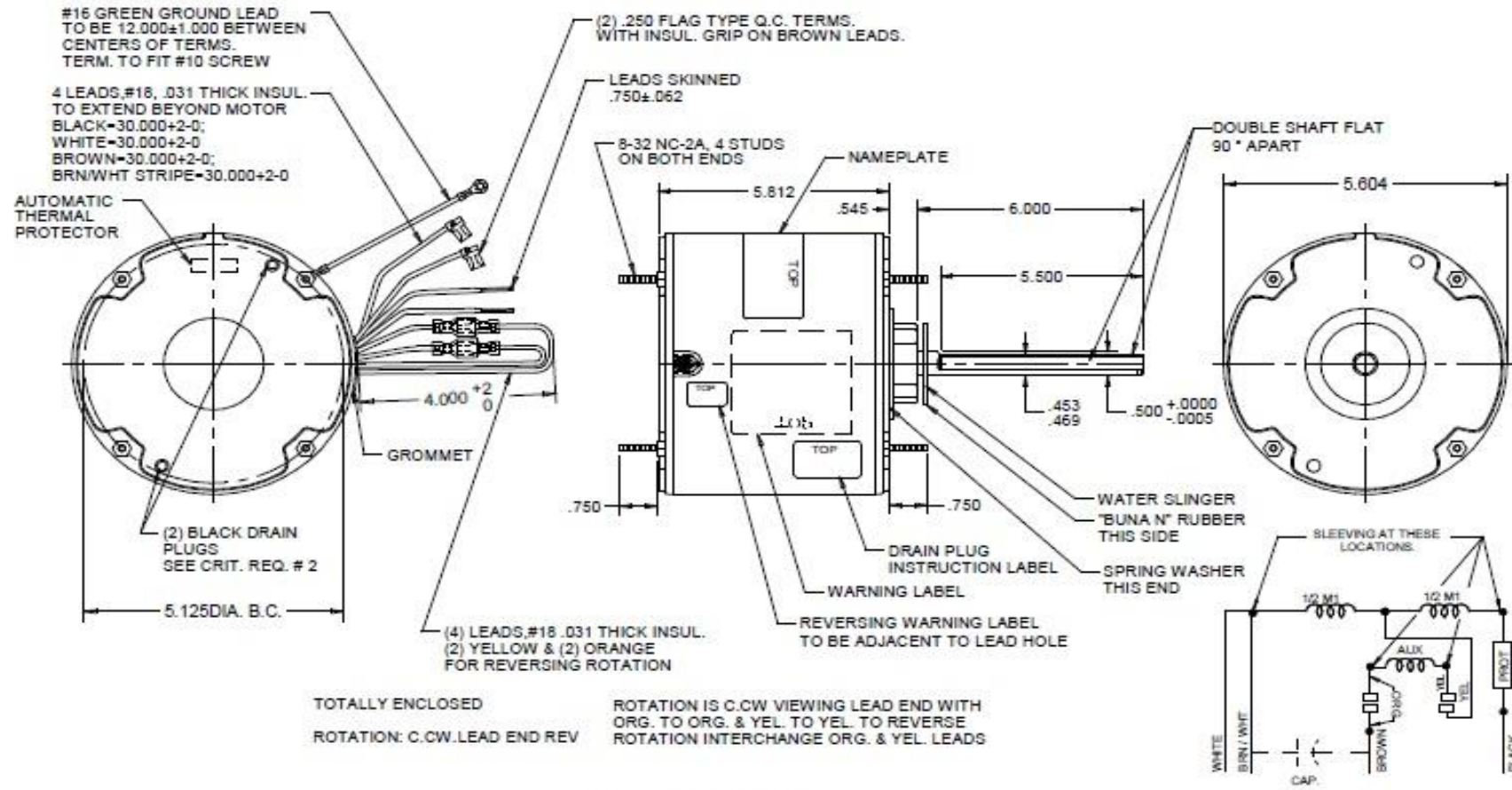
# Dimensional Drawing



3LU99BJ

REV.  
-

MODEL	REF	CUSTOMER	HP	VOLTS	AMPS	HZ	RPM	ROTATION	CUSTOMER PN	DESCRIPTION / REMARKS
K55HXTDR-2347		DAYTON	3/4	460	2.0	60	1075	C.C.W. LEAD END REV	3LU99BJ	BALL BEARING



DRAWING NO.	PAGE 1 of 1	REV.
3LU99BJ		-

**3LU99BJ**

REV.  
-

## SHADED-POLE & PSC MOTOR PERFORMANCE

<b>HP:</b>	3/4							
<b>Poles:</b>	6							
<b>Ambient (°C):</b>	40							
<b>Altitude (FASL):</b>	1000							
<b>No. of Speeds:</b>	1							
<b>HIGH SPEED</b>								
<b>Volts:</b>	460	115	208	230	277	460	100	200
<b>HZ:</b>	60	60	60	60	60	60	50	50
<b>Service Factor:</b>	1.0							
<b>Efficiency:</b>	@ Rated Load					64.3		
<b>Power Factor:</b>	@ Rated Load					88.8		
<b>Amps:</b>	@ No Load							
	@ Rated Load					2.5		
	@ Locked Rotor					5		
<b>RPM:</b>	@ Rated Load					1075		
<b>Torques: Oz.Ft.</b>	Breakdown					78.9		
	Locked Rotor					14.6		
	Pull-Up							
	Rated Load					68.7		
	Service Factor					1.0		
<b>Watts:</b>	Rated Load					1021		
<b>Temperature Rise:</b>	@ Rated Load							
<b>Thermal Protector:</b>	Trip Temp (°C)					140~150		
<b>Winding Material:</b>	Start (Auxiliary)					Copper		
	Run (Main)					Copper		
<b>Capacitor:</b>	Run (MFD / Volts)	10.0 MFD 370V						
	No. of Run Capacitors	1						

## MEDIUM-HIGH SPEED

<b>HP:</b>	3/4							
<b>Volts:</b>	460	115	208	230	277	460	100	200
<b>HZ:</b>	60	60	60	60	60	60	50	50
<b>Efficiency:</b>	@ Rated Load							
<b>Power Factor:</b>	@ Rated Load							
<b>Amps:</b>	@ No Load							
	@ Rated Load							
	@ Locked Rotor							
<b>Torques: Oz.Ft.</b>	Breakdown							
	Locked Rotor							
	Pull-Up							
	Rated Load							
<b>Watts:</b>	Rated Load							
<b>Temperature Rise:</b>	@ Rated Load							

DRAWING NO. PAGE REV.  
3LU99BJ -

**3LU99BJ**

REV.  
-

## SHADED-POLE & PSC MOTOR PERFORMANCE

### MEDIUM-LOW SPEED

<b>HP:</b>	3/4							
<b>Volts:</b>	460	115	208	230	277	460	100	200
<b>HZ:</b>	60	60	60	60	60	60	50	50
<b>Efficiency:</b>	@ Rated Load							
<b>Power Factor:</b>	@ Rated Load							
<b>Amps:</b>	@ No Load							
	@ Rated Load							
<b>Torques: Oz.Ft.</b>	Breakdown							
	Locked Rotor							
	Pull-Up							
	Rated Load							
<b>Watts:</b>	Rated Load							
<b>Temperature Rise:</b>	@ Rated Load							
<b>Watts:</b>	Rated Load							
<b>Temperature Rise:</b>	@ Rated Load							
<b>Thermal Protector:</b>	Trip Temp (°C)							
<b>Winding Material:</b>	Start (Auxiliary)							
	Run (Main)							

### LOW SPEED

<b>HP:</b>	3/4							
<b>Volts:</b>	460	120	208	230	277	460	100	200
<b>HZ:</b>	60	60	60	60	60	60	50	50
<b>Efficiency:</b>	@ Rated Load							
<b>Power Factor:</b>	@ Rated Load							
<b>Amps:</b>	@ No Load							
	@ Rated Load							
<b>Torques: Oz.Ft.</b>	Breakdown							
	Locked Rotor							
	Pull-Up							
	Rated Load							
<b>Watts:</b>	Rated Load							
<b>Temperature Rise:</b>	@ Rated Load							

Notes:

DRAWING NO. PAGE REV.  
3LU99BJ -

# Performance Data



**3LU98BJ**

REV.

-

## Dayton Manufacturing Company

Motor Description		Test Conditions			
Model:	3LU99BJ	Test Type:	Run	Run Cap:	10
Motor ID:	1	Test Number:	2	Start Cap:	0µfd
Poles:	6	Poles:	6	Environment:	
Volts:	460	Volts:	460	Tested:	1/14/2008 3:18:55 PM
Frequency:	60	Hz:	60	Tested By:	Sharp, Gerald
HP:	3/4	Rotation:		Gear Ratio:	1:1
Speed:	1075	Special Cond:		Bearing Friction:	-0.36 Oz-Ft
Phase:	1	Speed Conn:		Windage Torque:	-1.92 Oz-Ft
Protector:		TestBoard:	Amps Performance Fixture #3		

Special Points	Vline (V)	Vaux (V)	Vcap (V)	Iline (A)	Imain (A)	Iaux (A)	Watts	RPM	Tq(Oz-ft)	HP	Eff (%)	PF (%)	Cap
	460.0	376.3	431.2	0.754	1.848	1.671	197.9	1190	0.00	0.000	0.0	57.1	10.3
	460.0	379.5	413.9	0.891	1.629	1.594	318.9	1176	11.84	0.166	38.8	77.8	10.2
	460.0	383.4	396.7	1.112	1.542	1.520	428.8	1165	23.21	0.322	56.0	83.8	10.2
	460.0	382.0	382.3	1.353	1.529	1.463	544.2	1152	34.20	0.469	64.3	87.4	10.1
	460.0	377.6	369.4	1.576	1.587	1.411	646.3	1138	43.09	0.584	67.4	89.1	10.1
	460.0	372.0	356.0	1.819	1.717	1.359	751.6	1123	51.38	0.687	68.2	89.8	10.1
<b>0.75 HP</b>	<b>460.0</b>	<b>368.0</b>	<b>346.2</b>	<b>1.983</b>	<b>1.837</b>	<b>1.324</b>	<b>820.0</b>	<b>1110</b>	<b>56.75</b>	<b>0.750</b>	<b>68.2</b>	<b>89.9</b>	<b>10.1</b>
	460.0	366.8	343.8	2.022	1.867	1.315	836.4	1106	57.76	0.761	67.8	89.9	10.1
	460.0	359.5	330.0	2.300	2.112	1.266	948.4	1089	64.44	0.835	65.7	89.6	10.2
<b>1075 RPM</b>	<b>460.0</b>	<b>354.3</b>	<b>320.5</b>	<b>2.491</b>	<b>2.299</b>	<b>1.232</b>	<b>1021.0</b>	<b>1075</b>	<b>68.71</b>	<b>0.879</b>	<b>64.3</b>	<b>89.1</b>	<b>10.2</b>
	460.0	352.4	317.3	2.554	2.364	1.221	1044.3	1071	70.05	0.893	63.8	88.9	10.2
	460.0	345.2	305.7	2.792	2.621	1.181	1131.3	1050	73.54	0.919	60.6	88.1	10.2
	460.0	337.1	294.3	3.034	2.897	1.139	1215.7	1027	76.35	0.934	57.3	87.1	10.3
	460.0	329.1	284.5	3.259	3.163	1.105	1288.1	1004	78.23	0.935	54.1	85.9	10.3
<b>BDT OZ-FT</b>	<b>460.0</b>	<b>322.6</b>	<b>277.2</b>	<b>3.440</b>	<b>3.379</b>	<b>1.080</b>	<b>1344.8</b>	<b>982</b>	<b>78.86</b>	<b>0.922</b>	<b>51.2</b>	<b>85.0</b>	<b>10.3</b>
	460.0	321.0	275.5	3.483	3.432	1.074	1357.2	978	78.66	0.916	50.3	84.7	10.3
	460.0	312.4	267.6	3.699	3.699	1.046	1419.9	948	77.86	0.879	46.2	83.4	10.4
	460.0	304.2	261.2	3.899	3.950	1.024	1473.7	917	76.79	0.839	42.5	82.2	10.4
	460.0	295.6	255.8	4.093	4.197	1.004	1521.2	884	74.40	0.783	38.4	80.8	10.4
	460.0	287.3	252.0	4.271	4.427	0.991	1561.0	848	71.28	0.720	34.4	79.5	10.4
	460.0	278.9	249.2	4.437	4.644	0.980	1594.8	809	67.48	0.650	30.4	78.1	10.4
	460.0	270.9	247.7	4.591	4.847	0.974	1623.7	766	63.52	0.579	26.6	76.9	10.4
	460.0	263.3	246.9	4.723	5.040	0.970	1644.0	720	58.77	0.504	22.9	75.7	10.4
	460.0	255.7	247.1	4.849	5.211	0.970	1662.0	672	53.74	0.430	19.3	74.5	10.4
	460.0	248.7	247.8	4.965	5.371	0.972	1677.2	620	48.74	0.360	16.0	73.4	10.4
	460.0	241.5	248.9	5.071	5.520	0.974	1686.0	563	43.53	0.292	12.9	72.3	10.4
	460.0	235.0	250.2	5.159	5.648	0.976	1691.8	503	38.19	0.228	10.1	71.3	10.3
	460.0	228.6	251.9	5.228	5.754	0.982	1693.2	437	33.84	0.176	7.8	70.4	10.3
	460.0	221.7	255.5	5.287	5.848	0.990	1696.7	367	29.80	0.130	5.7	69.8	10.3
	460.0	216.2	258.9	5.327	5.914	1.003	1702.0	295	26.60	0.093	4.1	69.5	10.3
	460.0	209.6	263.4	5.372	5.988	1.021	1709.9	215	23.72	0.061	2.7	69.2	10.3
	460.0	204.7	266.8	5.396	6.036	1.039	1715.7	132	20.91	0.033	1.4	69.1	10.3
	460.0	197.3	272.4	5.417	6.091	1.063	1718.4	44	18.53	0.010	0.4	69.0	10.3

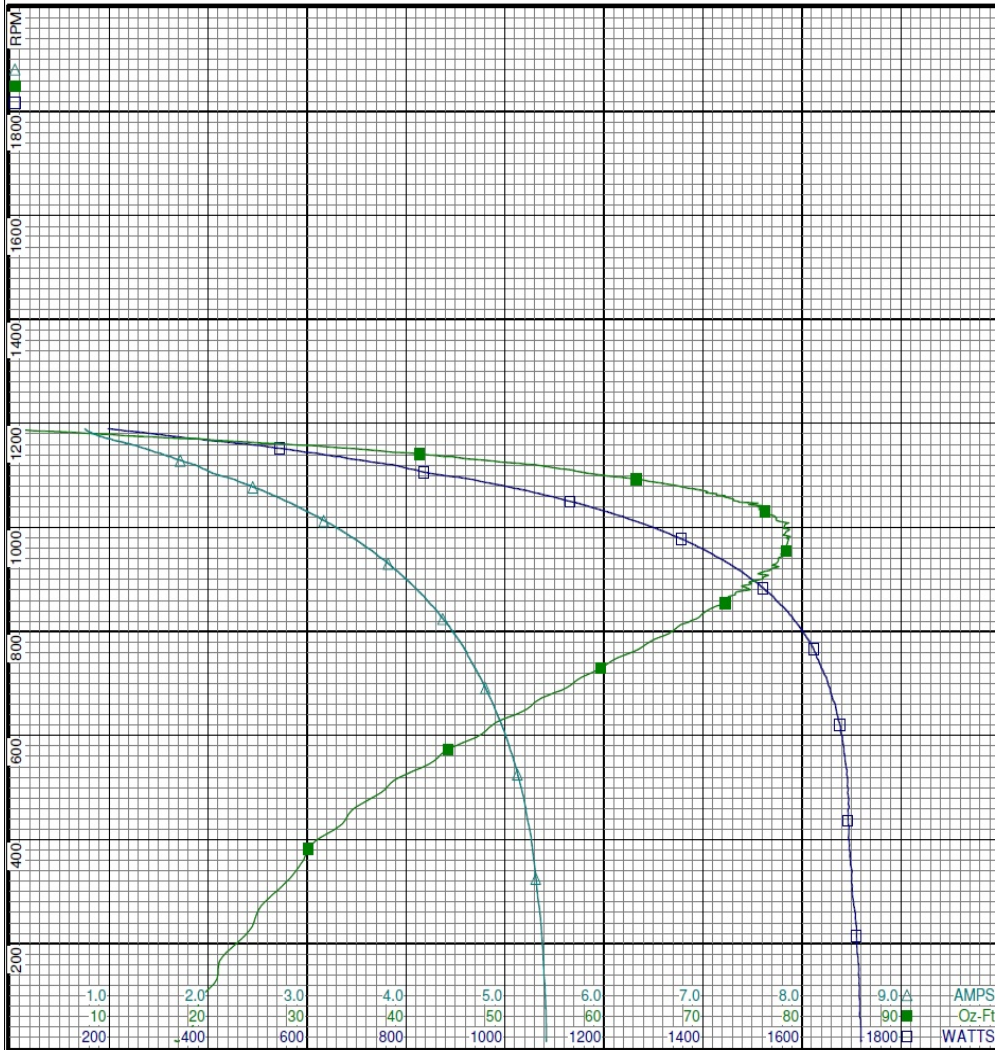
# Performance Data



3LU98BJ

REV.

-



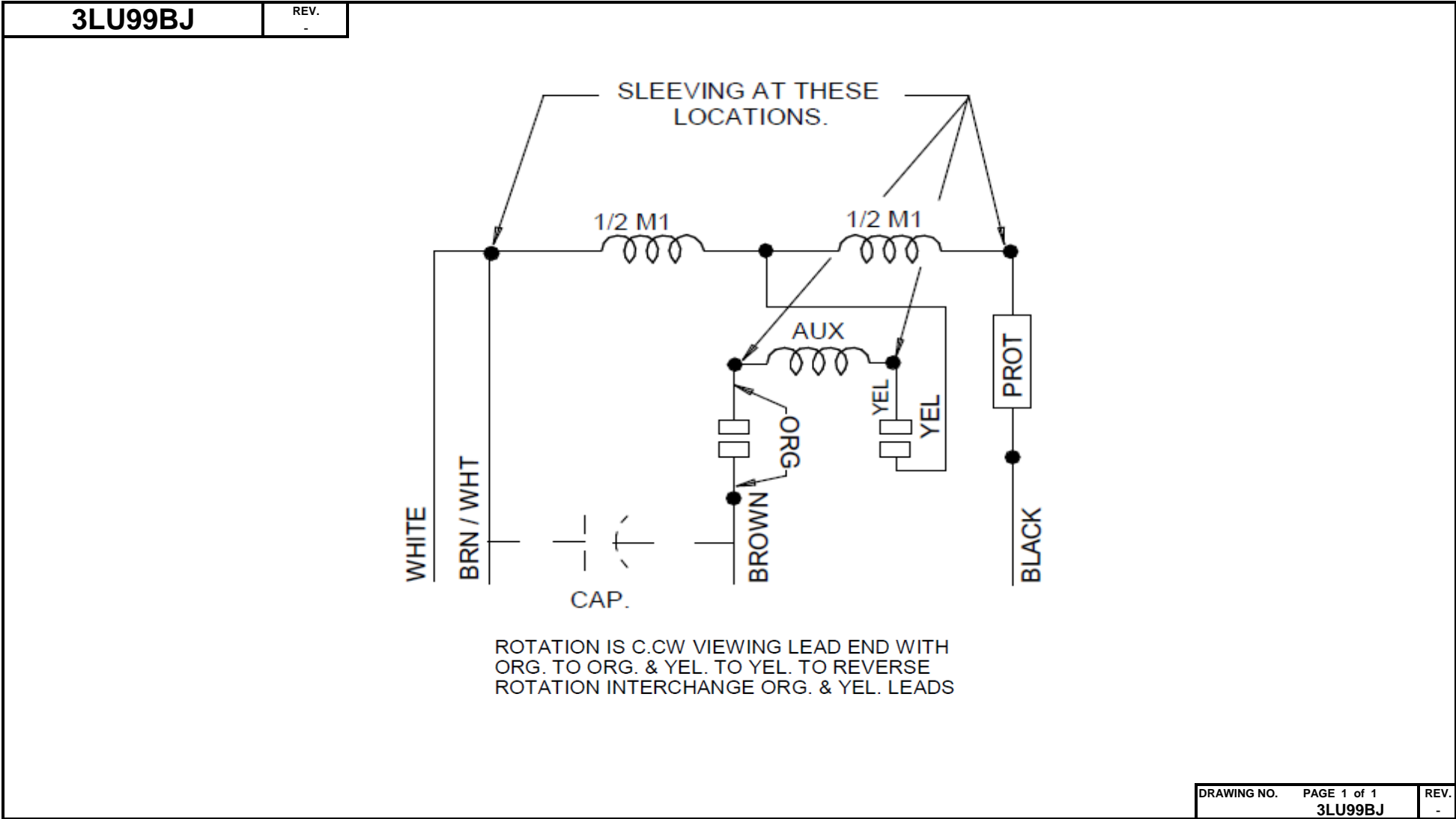
Curve Descriptions:  
 Motor(1) Test 2 Run 460V 60 Hz 6P  
 10ufd Run  
 □ SPEED vs WATTS  
 ■ SPEED vs TORQUE  
 △ SPEED vs ILine

Motor Ratings:  
 (1) 3LU98BJ

DRAWING NO. PAGE 2 of 2 REV.  
 3LU98BJ -



# Wiring Diagram



Dayton Electric Mfg. Co. Lake Forest, IL 60045 USA

©2019 W.W. Grainger, Inc. This design may not be reproduced, modified or redistributed without written permission from W.W. Grainger, Inc.

# Dayton®

# CONDENSER FAN MOTOR

HP: 3/4  
VOLTS: 460  
AMPS: 2.0  
RPM: 1075  
DUTY: CONT  
SF: 1.0  
KVA CODE:  
ENCL: TEAO  
THERMALLY PROTECTED: AUTO

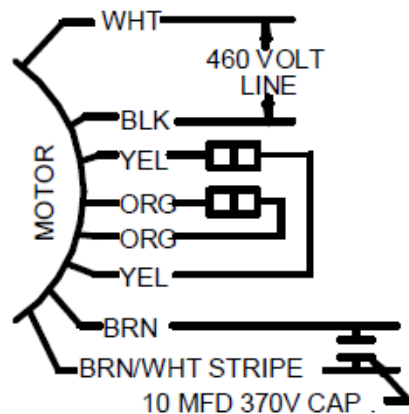
MFG. NO.   PROT. CODE: 7A010      AVG.F.L  
EFF.   
MTR REF: K55HXTDR-2347

BAR CODE

Part  
No 3LU99BJ

**Disconnect Power Before Making Any  
Electrical Connections or Changes**

TO REVERSE ROTATION  
INTERCHANGE ORG  
AND YEL LEADS



E37403



258501

Mfd for Dayton Electric Mfg. Co., Lake Forest, IL 60045 USA

Made In China