

Dimensional Drawing

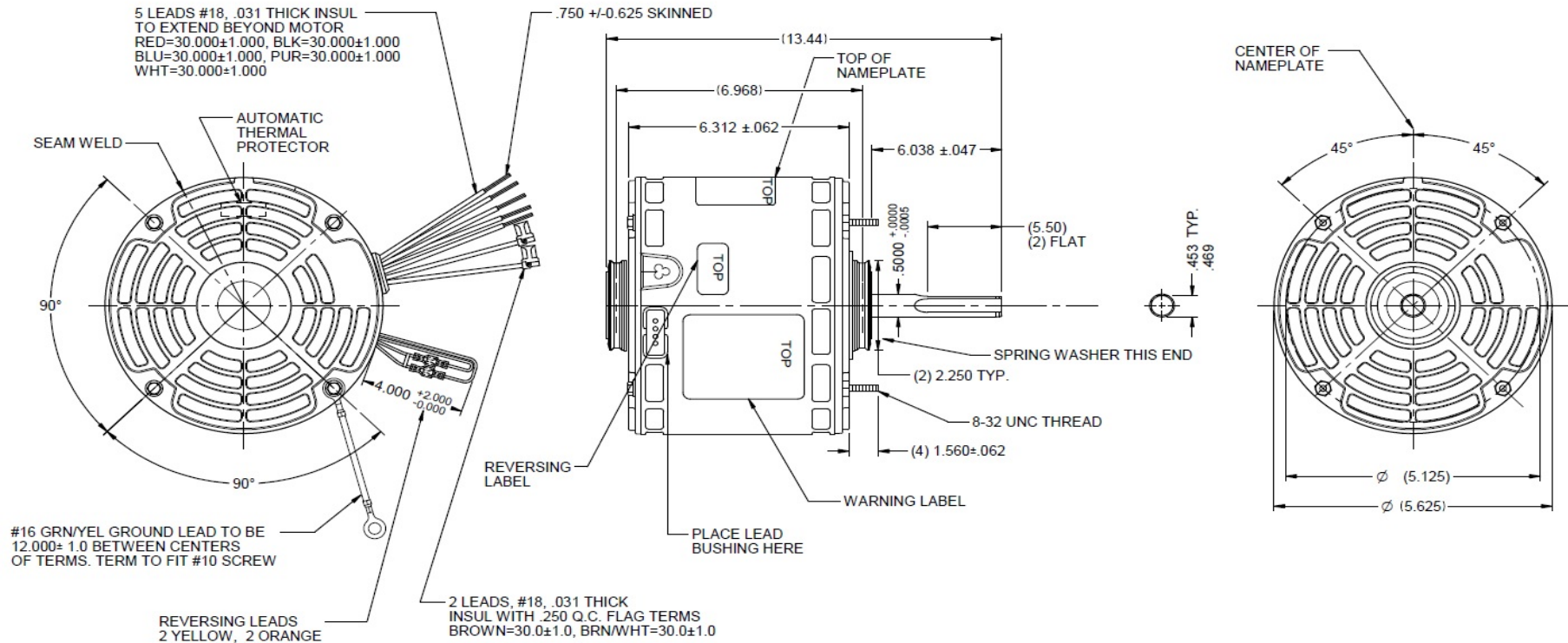


3LU92BG

REV.

-

MODEL	REF	CUSTOMER	HP	VOLTS	AMPS	HZ	RPM	ROTATION	CUSTOMER PN	DESCRIPTION / REMARKS
K55HXLNS-2510		GRAINGER	1	208 - 230	6.8	60	1075 / 4 SPD	CCW. LEAD END REV	3LU92BG	DIRECT DRIVE BLOWER MOTOR, 48YZ, OPAO, BB.



NOTE:
 -KIT - 2 1/2" RING CONVERSION SHIPPED IN CARTON

DRAWING NO.	PAGE 1 of 1	REV.
	3LU92BG	-

Performance Data



3LU92BG

REV.
-

MOTOR PERFORMANCE

HP:	1HP								
Poles:	6P								
No. of Speeds:	3	1st Speed		2nd Speed		3rd Speed		4th Speed	
Volts:	208/230	208	230	208	230	208	230	208	230
HZ:	60	60	60	60	60	60	60	60	60
Service Factor:	1								
Efficiency:	@ Rated Load	70.3	68.3	71	70.6	70.1	70.1	70.3	71.8
Power Factor:	@ Rated Load	92.5	91.4	93.5	93.1	92.7	93	92.7	93
Amps:	@ No Load								
	@ Rated Load	5.317	6.163 A	3.385	3.884	2.26	2.528	1.867	2.05
	@ Service Factor								
	@ Locked Rotor	11.728	14.777	9.374	10.57	5.901	6.687	5.007	5.711
RPM:	@ Rated Load	1096	1091	1113	1109	1106	1103	1110	1112
Ambient (°C):	40								
Altitude (FASL):									
Torques:	Breakdown	93.31	115.32	67	83.36	42.05	52.51	35.68	44.66
	Locked Rotor	23.573	26.65	13.84	18.67	7.34	7.83	4.73	8.12
	Pull-Up	N/A	26.65	13.84	18.67	5.889	7.83	4.73	8.12
	Rated Load	73.868	91.332	47.306	59.59	31.12	38.704	25.689	31.86
	Service Factor								
Watts:	Rated Load	1023.1	1296	1023.1	1296	435.9	540.5	360.2	438.4
KVA Code:									
Temperature Rise:	@ Rated Load								
	@ Service Factor								
Thermal Protector:	Trip Temp (°C)								
Winding Material:	Start (Auxiliary)								
	Run (Main)								
Capacitor(s):	Start (MFD / Volts)	N/A							
	No. of Start Capacitors								
	Run (MFD / Volts)	20 MFD/370VAC							
	No. of Run Capacitors								

PERFORMANCE DATA:

HP:									
Poles:									
Volts:									
HZ:									
Efficiency:	@ Rated Load								
Power Factor:	@ Rated Load								
Amps:	@ No Load								
	@ Rated Load								
	@ Service Factor								
	@ Locked Rotor								
Torques:	@ Rated Load								
	Locked Rotor								
	Pull-Up								
	Rated Load								
	Service Factor								
Watts:	@ Rated Load								
Temperature Rise:	@ Rated Load								
	@ Service Factor								

DRAWING NO. PAGE 1 of 1 REV.
3LU92BG -



3LU92BG

REV.

-

Dayton Manufacturing Company

Motor Description

Model: 3LU92BG
 Motor ID: 1
 Poles: 6
 Volts: 208-230
 Frequency: 60
 HP: 1
 Speed: 1075
 Phase: 1
 Protector: 7AM033-A5

Test Conditions

Test Type: Start
 Test Number: 15
 Poles: 6
 Volts: 208
 Hz: 60
 Rotation:
 Special Cond: M1
 Speed Conn: M1
 TestBoard: CMD InLine Three Phase #2 Fixture #1
 Run Cap: 20
 Start Cap: 0µfd
 Environment: 23.9 Deg C 61 % RH 965 hPa
 Tested: 7/14/2016 10:36:50 AM
 Tested By: Bribiesca, Griselda
 Gear Ratio: 1:1
 Bearing Friction: -0.80 Oz-Ft
 Windage Torque: -2.59 Oz-Ft

Special Points	Vline (V)	Vaux (V)	Vcap(V)	Iline (A)	Watts	RPM	Tq(Oz-ft)	HP	Eff (%)	PF (%)
	208.0	53.4	243.2	13.024	1980.9	21	19.26	0.005	0.2	73.1
	208.0	53.9	238.3	12.941	1969.2	128	23.29	0.035	1.3	73.2
	208.0	55.6	234.2	12.829	1961.2	227	30.31	0.082	3.1	73.5
	208.0	58.2	230.3	12.665	1948.0	325	36.16	0.140	5.4	73.9
	208.0	62.4	227.7	12.488	1935.2	409	39.39	0.192	7.4	74.5
	208.0	68.9	225.5	12.244	1925.5	494	47.15	0.277	10.7	75.6
	208.0	76.6	224.4	11.930	1907.7	570	54.29	0.368	14.4	76.9
	208.0	84.7	223.5	11.578	1884.8	642	62.33	0.477	18.9	78.3
	208.0	93.3	223.6	11.190	1850.9	705	68.64	0.576	23.2	79.5
	208.0	103.4	224.7	10.742	1810.7	766	75.44	0.688	28.3	81.0
	208.0	114.1	226.9	10.245	1758.6	820	80.72	0.788	33.4	82.5
	208.0	125.6	230.7	9.709	1698.0	870	84.78	0.878	38.6	84.1
	208.0	137.9	236.0	9.139	1628.6	915	88.49	0.964	44.2	85.7
	208.0	150.3	242.9	8.542	1548.4	955	89.51	1.017	49.0	87.1
	208.0	164.1	251.9	7.861	1450.3	993	89.46	1.057	54.4	88.7
	208.0	177.2	261.8	7.197	1348.5	1025	87.48	1.067	59.0	90.1
	208.0	191.0	273.6	6.468	1228.1	1055	83.40	1.047	63.6	91.3
	208.0	204.1	285.9	5.752	1103.1	1081	77.37	0.996	67.4	92.2
	208.0	216.2	298.2	5.070	979.2	1104	68.99	0.906	69.1	92.8
	208.0	227.3	310.5	4.408	850.9	1123	60.08	0.804	70.4	92.8
	208.0	236.6	321.6	3.833	735.7	1140	49.83	0.676	68.6	92.3
	208.0	243.9	331.3	3.328	630.9	1154	40.10	0.551	65.1	91.1
	208.0	250.2	341.6	2.850	527.1	1166	30.66	0.426	60.2	88.9
	208.0	255.4	351.8	2.484	442.2	1175	21.99	0.308	51.9	85.6
	208.0	258.3	358.3	2.267	380.1	1183	14.93	0.210	41.2	80.6
	208.0	260.4	362.9	2.100	323.4	1189	8.75	0.124	28.6	74.0
	208.0	261.7	365.8	2.017	286.1	1193	4.18	0.059	15.5	68.2
	208.0	263.0	368.2	1.955	254.2	1197	0.19	0.003	0.8	62.5
	208.0	263.0	368.3	1.953	252.6	1197	0.00	0.000	0.0	62.2

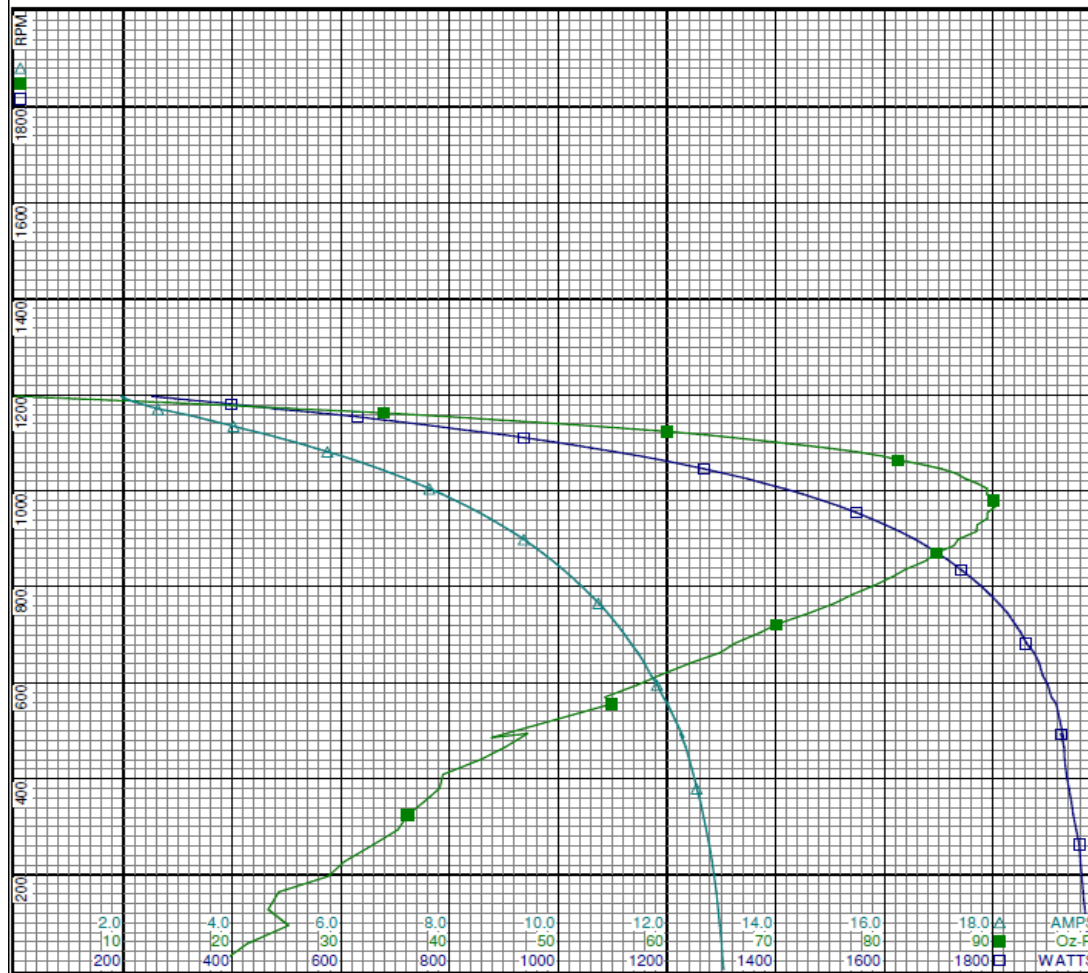
DRAWING NO. PAGE 1 of 32
3LU92BG

REV.
 -

3LU92BG

REV.

-



Curve Descriptions:
 Motor(1) Test 15 Start 208V 60 Hz 6P
 M1 M1 20ufd Run
 □ SPEED vs WATTS
 ■ SPEED vs TORQUE
 △ SPEED vs ILine

Motor Ratings:
 (1) K55HXHLNS-2510 ID: 1

DRAWING NO.	PAGE 2 of 32	REV.
	3LU92BG	-

3LU92BG

REV.

-

Dayton Manufacturing Company

Motor Description

Model: 3LU92BG
 Motor ID: 1
 Poles: 6
 Volts: 208-230
 Frequency: 60
 HP: 1
 Speed: 1075
 Phase: 1
 Protector: 7AM033-A5

Test Conditions

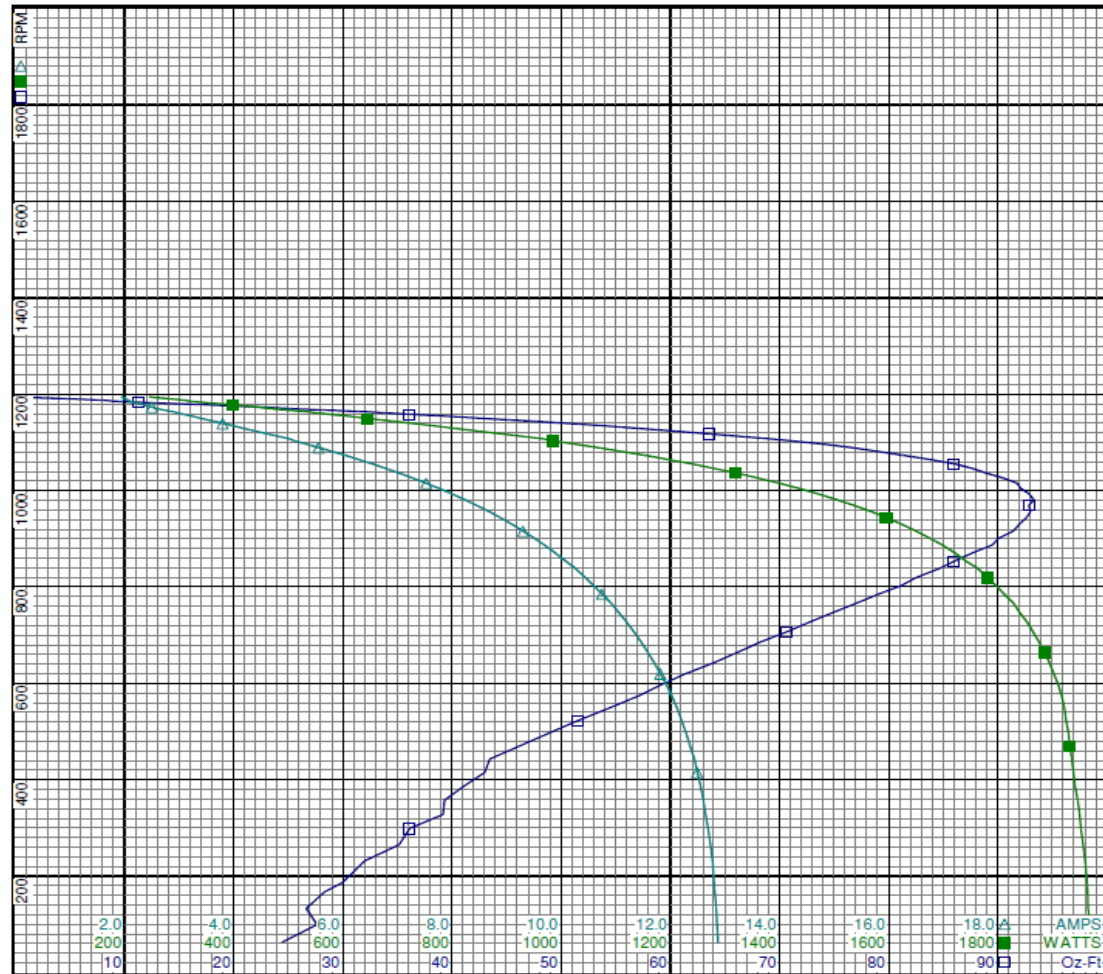
Test Type: Run
 Test Number: 1
 Poles: 6
 Volts: 208
 Hz: 60
 Rotation: REV
 Special Cond: M1 - HIGH SPEED
 Speed Conn:
 TestBoard: CMD InLine Three Phase #2 Fixture #1
 Run Cap: 20
 Start Cap: 0µfd
 Environment: 23.9 Deg C 61 % RH 965 hPa
 Tested: 7/14/2016 10:35:28 AM
 Tested By: Bribiesca, Griselda
 Gear Ratio: 1:1
 Bearing Friction: -0.80 Oz-Ft
 Windage Torque: -0.99 Oz-Ft

Special Points	Vline (V)	Vaux (V)	Vcap(V)	Iline (A)	Watts	RPM	Tq(Oz-ft)	HP	Eff (%)	PF (%)
	208.0	262.2	367.6	1.943	245.5	1194	0.00	0.000	0.0	60.7
	208.0	261.4	365.9	1.985	271.2	1191	3.30	0.047	12.9	65.7
	208.0	260.1	363.0	2.071	310.1	1187	8.07	0.114	27.4	72.0
	208.0	258.5	358.8	2.227	366.9	1181	13.91	0.196	39.8	79.2
	208.0	254.4	350.4	2.502	445.3	1173	22.76	0.318	53.2	85.6
	208.0	249.1	340.0	2.886	533.5	1163	32.02	0.443	62.0	88.9
	208.0	242.2	328.8	3.410	645.9	1149	43.05	0.589	68.0	91.1
	208.0	234.3	318.4	3.968	761.7	1135	53.53	0.723	70.8	92.3
	208.0	225.4	307.8	4.542	876.5	1119	62.54	0.833	70.9	92.8
	208.0	224.3	306.6	4.611	890.0	1117	63.54	0.845	70.9	92.8
73.868 OZ-FT	208.0	212.5	293.6	5.317	1023.1	1096	73.87	0.964	70.3	92.5
	208.0	212.0	293.1	5.344	1028.1	1096	74.24	0.968	70.3	92.5
	208.0	200.0	280.9	6.046	1154.6	1073	81.39	1.039	67.2	91.8
	208.0	199.7	280.7	6.061	1157.1	1072	81.54	1.041	67.1	91.8
	208.0	186.4	268.5	6.786	1280.5	1046	87.70	1.092	63.6	90.7
	208.0	172.7	257.1	7.529	1400.0	1015	91.79	1.109	59.1	89.4
BDT OZ-FT	208.0	158.9	247.0	8.238	1506.0	980	93.31	1.089	53.9	87.9
	208.0	158.9	247.0	8.238	1506.0	980	93.31	1.089	53.9	87.9
	208.0	146.0	239.1	8.880	1596.0	943	92.62	1.040	48.6	86.4
	208.0	132.9	232.5	9.507	1675.6	901	90.08	0.966	43.0	84.7
	208.0	120.5	227.8	10.089	1742.5	853	85.98	0.873	37.4	83.0
	208.0	109.3	224.8	10.595	1796.8	802	81.13	0.775	32.2	81.5
	208.0	99.0	223.1	11.051	1839.9	747	74.95	0.667	27.0	80.0
	208.0	89.6	222.8	11.461	1875.6	686	68.31	0.558	22.2	78.7
	208.0	81.1	223.2	11.818	1902.7	620	61.39	0.453	17.8	77.4
	208.0	73.7	224.4	12.124	1922.2	548	54.30	0.354	13.7	76.2
	208.0	66.8	225.8	12.359	1932.1	470	46.21	0.259	10.0	75.2
	208.0	61.0	228.5	12.553	1941.5	386	41.08	0.189	7.3	74.4
	208.0	57.2	231.7	12.690	1952.4	299	36.11	0.128	4.9	74.0
	208.0	54.9	235.6	12.799	1963.6	187	29.96	0.067	2.5	73.8
	208.0	54.0	239.5	12.857	1970.0	99	27.62	0.032	1.2	73.7

3LU92BG

REV.

-



Curve Descriptions:

Motor(1) Test 1 Run 208V 60 Hz 6P
M1 - HIGH SPEED REV 20ufd Run
□ SPEED vs TORQUE
■ SPEED vs WATTS
△ SPEED vs ILine

Motor Ratings:

(1) K55HXHXLNS-2510 ID: 1

DRAWING NO. PAGE 4 of 32
3LU92BG

REV.
-

Performance Data



3LU92BG

REV.

-

Dayton Manufacturing Company

Motor Description

Model: 3LU92BG
 Motor ID: 1
 Poles: 6
 Volts: 208-230
 Frequency: 60
 HP: 1
 Speed: 1075
 Phase: 1
 Protector: 7AM033-A5

Test Conditions

Test Type: Start
 Test Number: 16
 Poles: 6
 Volts: 208
 Hz: 60
 Rotation:
 Special Cond: M2
 Speed Conn: M2
 TestBoard: CMD InLine Three Phase #2 Fixture #1
 Run Cap: 20
 Start Cap: 0µfd
 Environment: 23.3 Deg C 57 % RH 966 hPa
 Tested: 7/14/2016 9:31:47 AM
 Tested By: Bribiesca, Griselda
 Gear Ratio: 1:1
 Bearing Friction: -0.88 Oz-Ft
 Windage Torque: -2.55 Oz-Ft

Special Points	Vline (V)	Vaux (V)	Vcap (V)	Iline (A)	Watts	RPM	Tq (Oz-ft)	HP	Eff (%)	PF (%)
PUT OZ-FT	208.0	47.3	207.8	9.374	1399.3	17	13.84	0.003	0.1	71.8
	208.0	47.3	207.8	9.374	1399.3	17	13.84	0.003	0.1	71.8
	208.0	47.5	203.1	9.313	1389.5	126	17.02	0.026	1.4	71.7
	208.0	48.6	199.3	9.228	1383.9	228	22.07	0.060	3.2	72.1
	208.0	50.0	196.4	9.117	1373.7	321	25.63	0.098	5.3	72.4
	208.0	53.4	192.7	8.986	1362.4	409	27.62	0.134	7.4	72.9
	208.0	58.4	190.9	8.847	1359.6	489	31.79	0.185	10.1	73.9
	208.0	65.1	189.7	8.632	1351.4	568	37.32	0.253	13.9	75.3
	208.0	71.9	188.8	8.388	1336.6	637	42.85	0.325	18.1	76.6
	208.0	79.2	188.5	8.118	1317.5	702	47.92	0.400	22.7	78.0
	208.0	87.7	189.0	7.791	1289.5	763	52.77	0.479	27.7	79.6
	208.0	96.8	190.7	7.439	1256.3	818	56.97	0.555	32.9	81.2
	208.0	106.7	193.7	7.051	1215.2	868	60.39	0.624	38.3	82.9
	208.0	118.0	198.4	6.608	1164.0	915	63.60	0.693	44.4	84.7
	208.0	129.0	204.3	6.169	1108.3	956	64.20	0.730	49.2	86.4
	208.0	140.3	211.8	5.700	1042.8	992	64.28	0.759	54.3	88.0
	208.0	152.4	221.0	5.193	967.2	1026	62.76	0.766	59.1	89.5
	208.0	164.3	231.2	4.683	885.7	1054	59.95	0.753	63.4	90.9
	208.0	175.9	242.4	4.158	796.8	1081	55.89	0.719	67.3	92.1
	208.0	187.4	254.1	3.644	706.3	1104	49.53	0.651	68.8	93.2
	208.0	197.4	265.3	3.164	616.8	1123	43.43	0.581	70.2	93.7
	208.0	206.5	275.8	2.739	535.6	1139	36.01	0.488	68.0	94.0
	208.0	213.9	285.4	2.354	459.5	1154	29.24	0.402	65.2	93.8
	208.0	221.4	296.6	1.977	383.8	1166	22.07	0.306	59.5	93.3
	208.0	228.2	308.7	1.698	326.7	1175	16.30	0.228	52.0	92.5
	208.0	232.5	316.4	1.510	283.7	1183	10.79	0.152	39.9	90.3
	208.0	235.3	321.8	1.324	236.4	1189	5.68	0.080	25.4	85.9
	208.0	237.0	324.8	1.221	207.1	1193	2.27	0.032	11.6	81.6
	208.0	237.9	326.6	1.160	188.1	1196	0.00	0.000	0.0	78.0

DRAWING NO. PAGE 5 of 32 REV.
 3LU92BG -

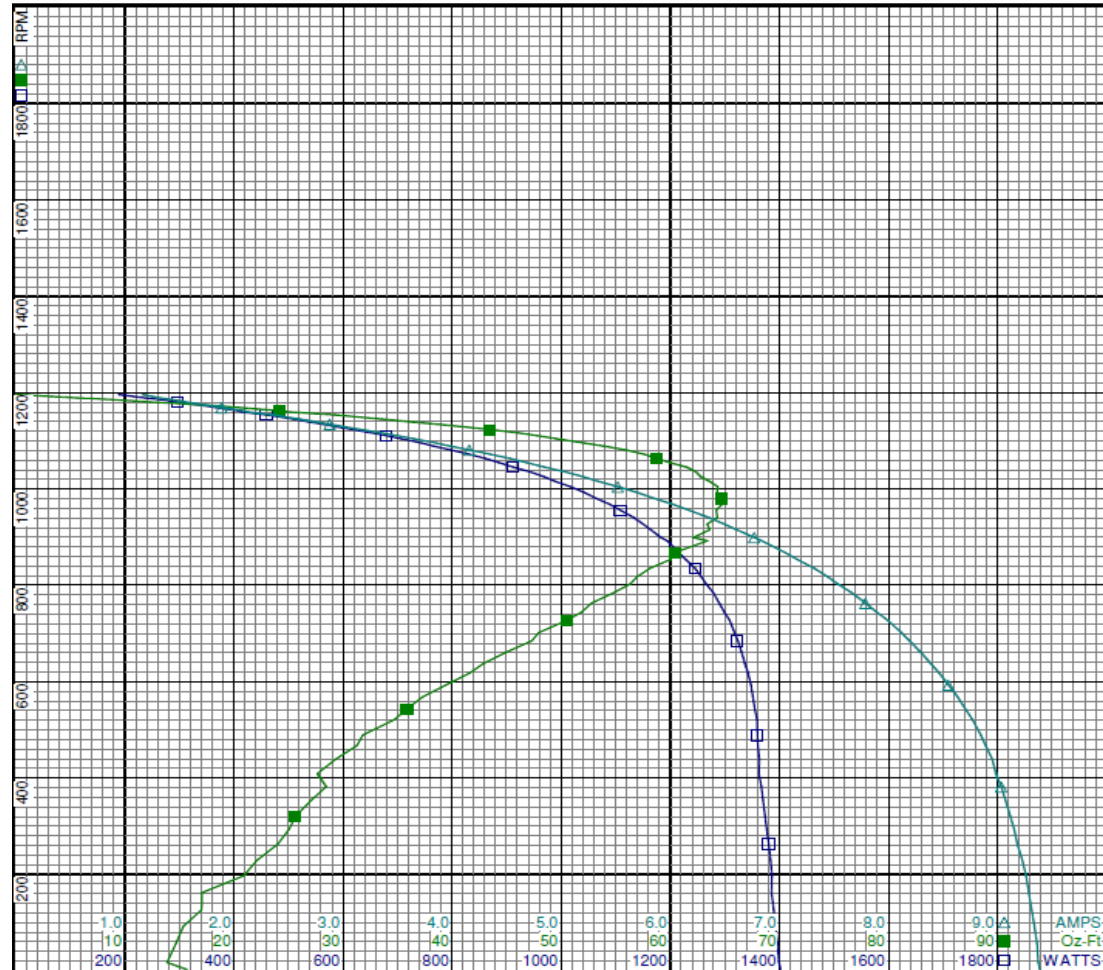
Performance Data



3LU92BG

REV.

-



Curve Descriptions:

Motor(1) Test 16 Start 208V 60 Hz 6P
M2 M2 20ufd Run

- SPEED vs WATTS
- SPEED vs TORQUE
- △ SPEED vs ILine

Motor Ratings:

(1) K55HXHLNS-2510 ID: 1

DRAWING NO. PAGE 6 of 32
3LU92BG

REV.
-

Dayton Electric Mfg. Co. Lake Forest, IL 60045 USA



3LU92BG

REV.

-

Dayton Manufacturing Company

Motor Description

Model: 3LU92BG
 Motor ID: 1
 Poles: 6
 Volts: 208-230
 Frequency: 60
 HP: 1
 Speed: 1075
 Phase: 1
 Protector: 7AM033-A5

Test Conditions

Test Type: Run
 Test Number: 2
 Poles: 6
 Volts: 208
 Hz: 60
 Rotation: REV
 Special Cond: M2 - MEDIUM-HIGH SPEED
 Speed Conn:
 TestBoard: CMD InLine Three Phase #2 Fixture #1

Run Cap: 20
 Start Cap: 0ufd
 Environment: 23.3 Deg C 57 % RH 966 hPa
 Tested: 7/14/2016 9:25:53 AM
 Tested By: Bribiesca, Griselda
 Gear Ratio: 1:1
 Bearing Friction: -1.00 Oz-Ft
 Windage Torque: -1.05 Oz-Ft

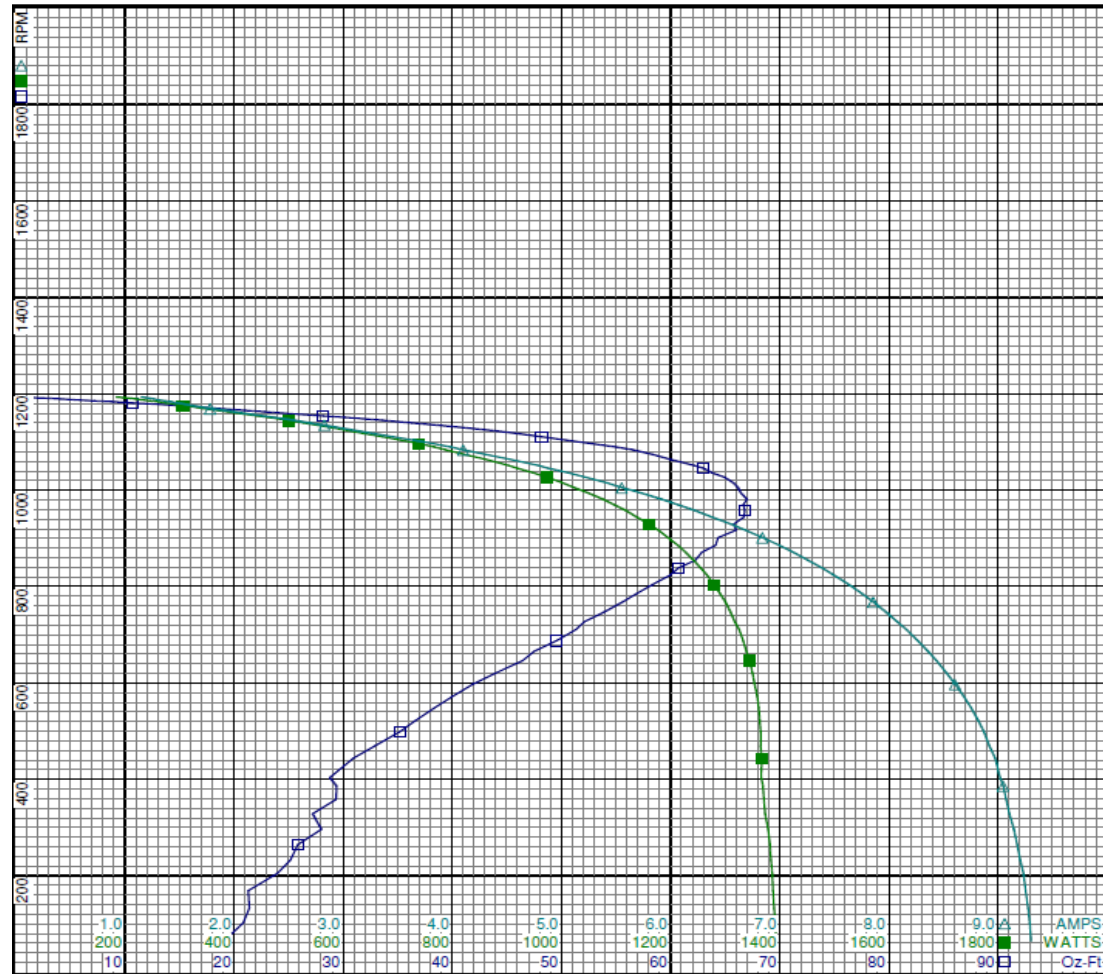
Special Points	Vline (V)	Vaux (V)	Vcap (V)	Iline (A)	Watts	RPM	Tq (Oz-ft)	HP	Eff (%)	PF (%)
	208.0	237.4	326.4	1.151	183.7	1193	0.00	0.000	0.0	76.7
	208.0	236.1	324.0	1.232	210.1	1190	2.99	0.042	15.1	82.0
	208.0	234.1	320.2	1.363	246.3	1185	7.18	0.101	30.7	86.9
	208.0	230.7	314.1	1.552	293.1	1178	12.89	0.181	46.0	90.8
	208.0	225.7	304.4	1.781	344.3	1169	18.56	0.258	56.0	92.9
	208.0	218.0	291.1	2.140	416.4	1158	25.47	0.351	62.9	93.6
	208.0	210.0	280.1	2.553	499.2	1145	33.61	0.458	68.4	94.0
	208.0	202.9	271.5	2.900	566.5	1132	39.92	0.538	70.8	93.9
	208.0	201.3	269.6	2.980	582.1	1129	41.35	0.556	71.2	93.9
47.306 OZ-FT	208.0	193.1	260.2	3.385	658.4	1113	47.31	0.627	71.0	93.5
	208.0	191.7	258.5	3.456	671.6	1111	48.19	0.637	70.8	93.4
	208.0	184.2	250.3	3.814	736.9	1097	52.63	0.687	69.6	92.9
	208.0	180.5	246.5	3.982	766.9	1089	54.98	0.713	69.4	92.6
	208.0	168.8	234.9	4.522	859.8	1064	59.91	0.759	65.8	91.4
	208.0	156.8	224.0	5.060	947.8	1036	63.78	0.786	61.9	90.1
	208.0	145.3	214.7	5.555	1023.2	1005	66.19	0.792	57.7	88.6
BDT OZ-FT	208.0	136.7	208.5	5.920	1076.1	981	67.00	0.782	54.2	87.4
	208.0	133.2	206.3	6.066	1096.2	969	66.66	0.769	52.4	86.9
	208.0	121.4	199.3	6.552	1160.0	929	65.78	0.728	46.8	85.1
	208.0	110.4	194.2	6.996	1213.5	885	64.12	0.676	41.5	83.4
	208.0	100.3	190.9	7.388	1255.2	838	60.72	0.606	36.0	81.7
	208.0	90.9	188.9	7.752	1290.4	786	56.92	0.532	30.8	80.0
	208.0	82.1	188.1	8.077	1317.7	727	52.09	0.451	25.5	78.4
	208.0	74.4	188.2	8.361	1339.0	665	47.48	0.376	20.9	77.0
	208.0	67.5	189.0	8.609	1354.1	597	41.85	0.297	16.4	75.6
	208.0	60.8	190.3	8.820	1363.6	521	36.61	0.227	12.4	74.3
	208.0	55.8	192.2	8.975	1367.3	444	30.93	0.163	8.9	73.2
	208.0	51.3	194.5	9.075	1371.1	358	29.35	0.125	6.8	72.6
	208.0	49.0	198.2	9.177	1382.1	264	25.84	0.081	4.4	72.4
	208.0	47.7	201.3	9.254	1387.4	169	21.28	0.043	2.3	72.1
	208.0	47.5	205.5	9.305	1393.3	64	19.05	0.015	0.8	72.0

DRAWING NO. PAGE 7 of 32 REV.
3LU92BG -

3LU92BG

REV.

-



Curve Descriptions:

Motor(1) Test 2 Run 208V 60 Hz 6P
M2 - MEDIUM-HIGH SPEED REV 20ufd Run
□ SPEED vs TORQUE
■ SPEED vs WATTS
△ SPEED vs ILine

Motor Ratings:

(1) K55HXHXLNS-2510 ID: 1

DRAWING NO. PAGE 8 of 32
3LU92BG

REV.
-

Performance Data



3LU92BG

REV.

-

Dayton Manufacturing Company

Motor Description

Model: 3LU92BG
 Motor ID: 1
 Poles: 6
 Volts: 208-230
 Frequency: 60
 HP: 1
 Speed: 1075
 Phase: 1
 Protector: 7AM033-A5

Test Conditions

Test Type: Start
 Test Number: 17
 Poles: 6
 Volts: 208
 Hz: 60
 Rotation:
 Special Cond: M3
 Speed Conn: M3
 TestBoard: CMD InLine Three Phase #2 Fixture #1
 Run Cap: 20
 Start Cap: 0ufd
 Environment: 23.3 Deg C 57 % RH 966 hPa
 Tested: 7/14/2016 9:48:21 AM
 Tested By: Bribiesca, Griselda
 Gear Ratio: 1:1
 Bearing Friction: -0.81 Oz-Ft
 Windage Torque: -2.83 Oz-Ft

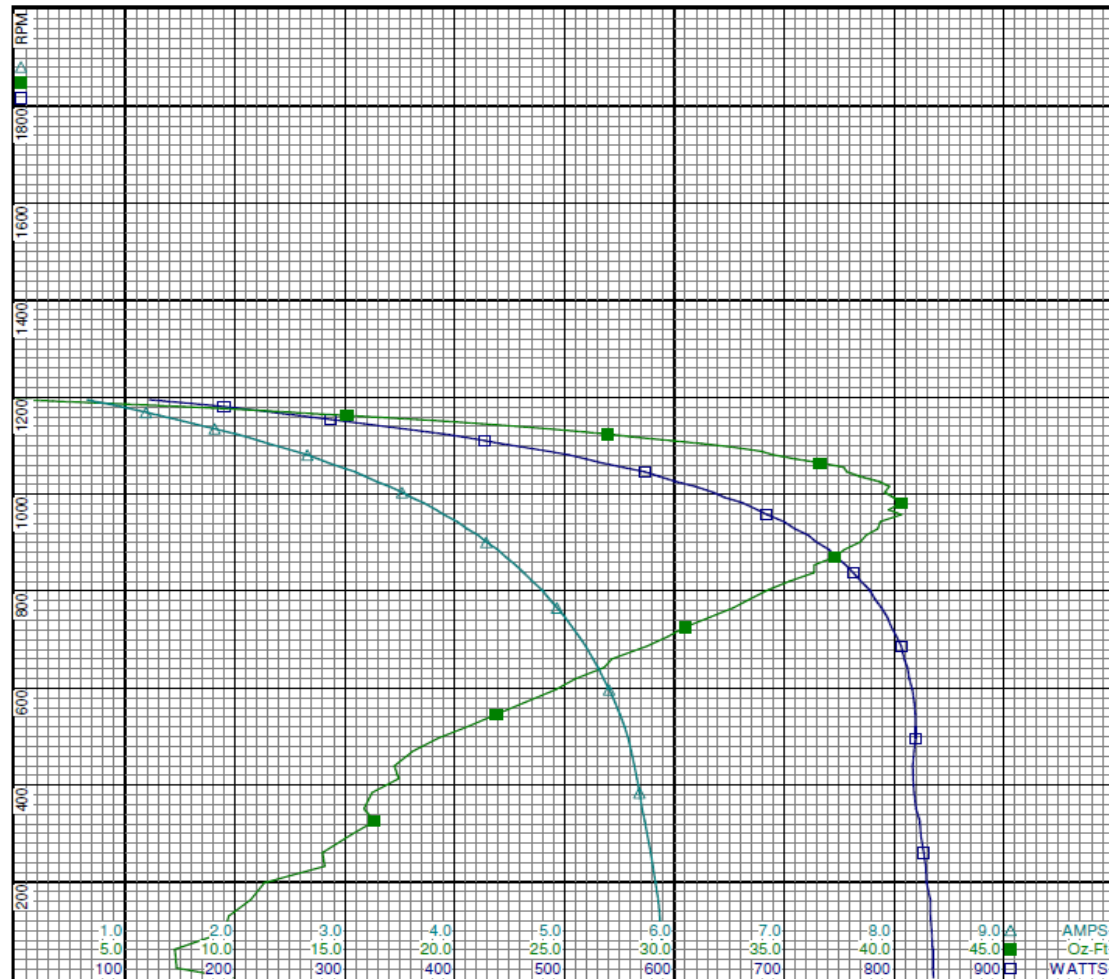
Special Points	Vline (V)	Vaux (V)	Vcap (V)	Iline (A)	Watts	RPM	Tq (Oz-ft)	HP	Eff (%)	PF (%)
	208.0	39.1	165.3	5.901	835.3	22	7.34	0.002	0.2	68.0
PUT OZ-FT	208.0	39.1	164.4	5.889	835.2	61	7.24	0.005	0.5	68.2
	208.0	38.7	161.7	5.867	833.3	130	9.71	0.015	1.3	68.3
	208.0	39.0	158.6	5.804	828.9	232	14.08	0.039	3.5	68.7
	208.0	40.3	156.0	5.731	823.5	325	16.33	0.063	5.7	69.1
	208.0	42.1	152.9	5.659	817.3	413	17.45	0.086	7.8	69.4
	208.0	46.2	151.3	5.579	819.6	497	19.25	0.114	10.4	70.6
	208.0	51.0	150.0	5.458	818.4	571	23.21	0.158	14.4	72.1
	208.0	56.3	148.7	5.304	812.2	642	26.80	0.205	18.8	73.6
	208.0	62.0	148.0	5.131	802.3	706	29.72	0.250	23.2	75.2
	208.0	68.4	147.9	4.932	788.5	766	32.69	0.298	28.2	76.9
	208.0	75.6	148.8	4.706	769.9	821	35.25	0.344	33.4	78.6
	208.0	83.4	150.8	4.463	747.2	870	37.31	0.387	38.6	80.5
	208.0	91.5	153.8	4.212	721.9	915	38.73	0.422	43.6	82.4
	208.0	101.1	158.9	3.900	684.4	957	40.34	0.460	50.1	84.4
	208.0	110.0	164.7	3.604	645.7	993	39.98	0.473	54.6	86.1
	208.0	119.5	171.9	3.287	601.2	1026	39.34	0.480	59.6	87.9
	208.0	129.0	180.1	2.963	552.5	1055	37.71	0.474	64.0	89.6
	208.0	138.1	188.7	2.659	503.9	1081	34.51	0.444	65.7	91.1
	208.0	148.0	199.2	2.301	441.8	1104	31.24	0.411	69.3	92.3
	208.0	156.1	208.2	2.010	390.4	1124	26.94	0.360	68.9	93.4
	208.0	164.0	217.7	1.712	334.4	1140	22.74	0.309	68.9	93.9
	208.0	170.8	226.4	1.465	287.1	1154	18.29	0.251	65.3	94.2
	208.0	177.4	235.8	1.238	243.8	1166	13.52	0.188	57.4	94.6
	208.0	185.4	249.2	1.058	209.3	1175	9.96	0.139	49.7	95.1
	208.0	191.2	258.7	0.915	179.9	1183	6.51	0.092	38.0	94.5
	208.0	194.2	263.9	0.775	150.8	1189	3.34	0.047	23.4	93.6
	208.0	195.9	266.9	0.681	129.5	1193	0.98	0.014	8.0	91.4
	208.0	196.5	267.9	0.651	122.0	1195	0.00	0.000	0.0	90.1

DRAWING NO. PAGE 9 of 32 REV.
 3LU92BG -

3LU92BG

REV.

-



Curve Descriptions:

Motor(1) Test 17 Start 208V 60 Hz 6P
M3 M3 20ufd Run

- SPEED vs WATTS
- SPEED vs TORQUE
- △ SPEED vs ILine

Motor Ratings:

(1) K55HXHXLNS-2510 ID: 1

DRAWING NO.	PAGE 10 of 32	REV.
	3LU92BG	-

3LU92BG

REV.

-

Dayton Manufacturing Company

Motor Description

Test Conditions

Model:	3LU92BG	Test Type:	Run	Run Cap:	20
Motor ID:	1	Test Number:	13	Start Cap:	0ufd
Poles:	6	Poles:	6	Environment:	23.3 Deg C 57 % RH 966 hPa
Volts:	208-230	Volts:	208	Tested:	7/14/2016 9:47:11 AM
Frequency:	60	Hz:	60	Tested By:	Bribiesca, Griselda
HP:	1	Rotation:	REV	Gear Ratio:	1:1
Speed:	1075	Special Cond:	M3 - MEDIUM-LOW SPEED	Bearing Friction:	-0.88 Oz-Ft
Phase:	1	Speed Conn:		Windage Torque:	-0.91 Oz-Ft
Protector:	7AM033-A5	TestBoard:	CMD InLine Three Phase #2 Fixture #1		

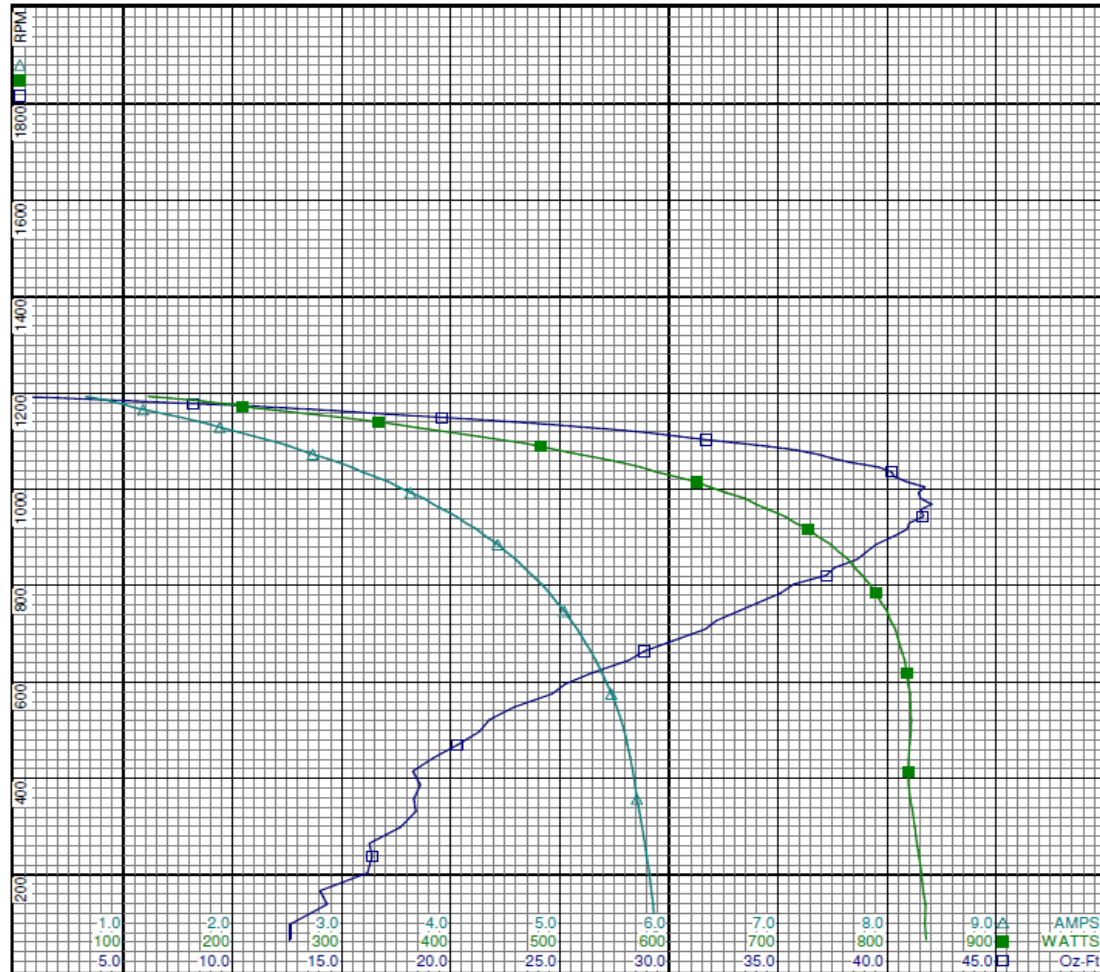
Special Points	Vline (V)	Vaux (V)	Vcap(V)	Iline (A)	Watts	RPM	Tq(Oz-ft)	HP	Eff (%)	PF (%)
	208.0	196.2	267.7	0.650	122.6	1193	0.00	0.000	0.0	90.6
	208.0	194.7	264.9	0.741	143.3	1189	2.33	0.033	17.2	93.0
	208.0	191.8	260.0	0.879	172.8	1183	5.61	0.079	34.1	94.5
	208.0	187.1	252.7	1.005	199.0	1176	9.34	0.131	49.0	95.2
	208.0	178.9	238.8	1.180	232.7	1166	13.69	0.190	60.9	94.8
	208.0	171.7	227.5	1.429	280.7	1154	17.82	0.245	65.0	94.5
	208.0	164.2	217.9	1.704	333.5	1139	22.93	0.311	69.6	94.1
	208.0	159.4	212.1	1.882	366.9	1129	26.18	0.352	71.5	93.7
	208.0	156.7	208.9	1.984	385.6	1123	27.82	0.372	71.9	93.4
31.117 OZ-FT	208.0	149.5	200.6	2.260	435.9	1106	31.12	0.410	70.1	92.7
	208.0	148.2	199.0	2.310	444.8	1103	31.68	0.416	69.8	92.6
	208.0	142.1	192.6	2.522	481.8	1089	34.50	0.447	69.3	91.8
	208.0	139.4	189.9	2.613	496.8	1082	35.78	0.461	69.2	91.4
	208.0	129.6	180.1	2.970	555.5	1056	38.31	0.482	64.7	89.9
	208.0	120.1	171.9	3.297	605.0	1027	40.31	0.493	60.8	88.2
BDT OZ-FT	208.0	110.2	164.2	3.632	652.4	993	41.45	0.490	56.0	86.3
	208.0	103.9	160.0	3.838	679.8	969	42.05	0.485	53.2	85.2
	208.0	101.1	158.4	3.929	691.0	958	41.54	0.474	51.1	84.6
	208.0	91.9	153.4	4.236	728.3	917	40.94	0.447	45.8	82.7
	208.0	83.4	150.3	4.502	755.3	871	39.09	0.405	40.0	80.7
	208.0	75.5	148.4	4.746	777.2	822	37.22	0.364	34.9	78.7
	208.0	68.2	147.6	4.970	794.2	766	34.15	0.311	29.2	76.8
	208.0	62.0	147.7	5.159	807.7	709	31.68	0.268	24.7	75.3
	208.0	56.2	148.5	5.329	816.2	645	28.17	0.216	19.8	73.6
	208.0	51.1	149.8	5.474	821.2	575	24.65	0.169	15.3	72.1
	208.0	46.3	151.2	5.593	822.0	497	21.32	0.126	11.5	70.7
	208.0	42.3	152.9	5.669	819.3	415	18.27	0.090	8.2	69.5
	208.0	40.2	155.7	5.729	823.4	331	18.39	0.073	6.6	69.1
	208.0	39.3	158.3	5.796	829.5	238	16.39	0.046	4.2	68.8
	208.0	38.8	161.0	5.855	835.4	138	14.32	0.024	2.1	68.6

DRAWING NO. PAGE 11 of 32 REV.
3LU92BG -

3LU92BG

REV.

-



Curve Descriptions:
 Motor(1) Test 13 Run 208V 60 Hz 6P
 M3 - MEDIUM-LOW SPEED REV 20ufid Run
 □ SPEED vs TORQUE
 ■ SPEED vs WATTS
 △ SPEED vs ILine

Motor Ratings:
 (1) K55HXHXLNS-2510 ID: 1



3LU92BG

REV.

-

Dayton Manufacturing Company

Motor Description

Model: 3LU92BG
 Motor ID: 1
 Poles: 6
 Volts: 208-230
 Frequency: 60
 HP: 1
 Speed: 1075
 Phase: 1
 Protector: 7AM033-A5

Test Conditions

Test Type: Start
 Test Number: 21
 Poles: 6
 Volts: 208
 Hz: 60
 Rotation:
 Special Cond: M4
 Speed Conn: M4
 TestBoard: CMD InLine Three Phase #2 Fixture #1
 Run Cap: 20
 Start Cap: 0µfd
 Environment: 23.3 Deg C 57 % RH 966 hPa
 Tested: 7/14/2016 9:59:09 AM
 Tested By: Bribiesca, Griselda
 Gear Ratio: 1:1
 Bearing Friction: -0.84 Oz-Ft
 Windage Torque: -1.64 Oz-Ft

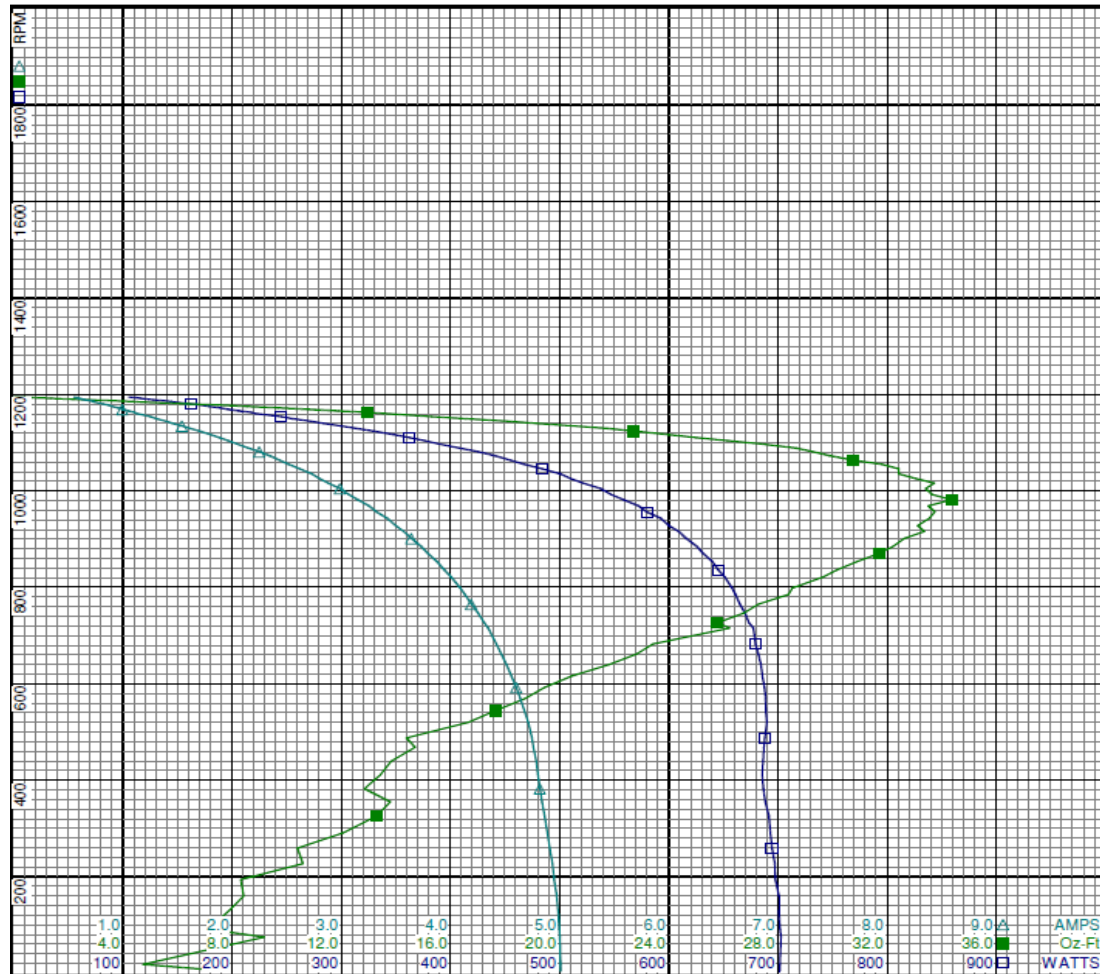
Special Points	Vline (V)	Vaux (V)	Vcap(V)	Iline (A)	Watts	RPM	Tq(Oz-ft)	HP	Eff (%)	PF (%)
PUT OZ-FT	208.0	37.0	153.7	5.007	701.7	18	4.73	0.001	0.1	67.4
	208.0	37.0	153.7	5.007	701.7	18	4.73	0.001	0.1	67.4
	208.0	36.4	150.0	4.983	700.9	129	7.89	0.012	1.3	67.6
	208.0	36.6	147.2	4.933	697.1	227	10.59	0.029	3.1	67.9
	208.0	37.7	144.6	4.862	691.7	326	13.29	0.051	5.6	68.4
	208.0	39.1	141.6	4.800	685.5	411	13.43	0.066	7.2	68.7
	208.0	42.2	140.3	4.746	687.9	487	14.38	0.083	9.0	69.7
	208.0	47.1	138.9	4.639	688.6	569	18.73	0.127	13.8	71.4
	208.0	52.0	137.8	4.512	684.3	640	21.81	0.166	18.1	72.9
	208.0	58.2	136.7	4.346	677.5	715	26.22	0.223	24.6	74.9
	208.0	63.2	136.8	4.191	665.0	765	27.29	0.249	27.9	76.3
	208.0	69.9	137.4	4.004	651.2	821	29.66	0.290	33.2	78.2
	208.0	77.2	139.3	3.790	631.2	871	31.73	0.329	38.9	80.1
	208.0	84.8	142.1	3.569	609.0	916	33.36	0.364	44.5	82.0
	208.0	93.1	146.4	3.322	579.8	956	33.75	0.384	49.4	83.9
	208.0	101.6	151.9	3.067	546.9	992	33.64	0.397	54.2	85.7
	208.0	110.4	158.5	2.798	509.8	1025	33.04	0.403	59.0	87.6
	208.0	119.4	166.4	2.515	467.2	1055	31.80	0.399	63.8	89.3
	208.0	127.8	174.4	2.248	425.0	1081	29.26	0.377	66.1	90.9
	208.0	136.7	183.7	1.962	376.1	1104	26.15	0.344	68.2	92.2
	208.0	144.4	192.4	1.698	329.1	1124	22.72	0.304	68.9	93.2
	208.0	151.6	201.2	1.453	283.5	1140	19.15	0.260	68.4	93.8
	208.0	157.9	209.0	1.249	244.8	1154	15.30	0.210	64.0	94.2
	208.0	164.1	218.2	1.049	206.5	1165	11.89	0.165	59.6	94.7
	208.0	172.3	231.4	0.900	178.7	1175	8.55	0.120	49.9	95.4
	208.0	179.3	242.9	0.732	145.4	1184	4.54	0.064	32.9	95.4
	208.0	181.1	246.1	0.649	127.6	1189	2.69	0.038	22.2	94.5
	208.0	182.7	248.7	0.574	111.0	1193	0.66	0.009	6.3	93.0
	208.0	183.2	249.5	0.548	105.2	1194	0.00	0.000	0.0	92.2

DRAWING NO. PAGE 13 of 32 REV.
 3LU92BG -

3LU92BG

REV.

-



Curve Descriptions:

Motor(1) Test 21 Start 208V 60 Hz 6P
M4 M4 20ufd Run

- SPEED vs WATTS
- SPEED vs TORQUE
- △ SPEED vs ILine

Motor Ratings:

(1) K55HXHXLNS-2510 ID: 1

DRAWING NO.	PAGE 14 of 32	REV.
	3LU92BG	-



3LU92BG

REV.

-

Dayton Manufacturing Company

Motor Description

Model: 3LU92BG
 Motor ID: 1
 Poles: 6
 Volts: 208-230
 Frequency: 60
 HP: 1
 Speed: 1075
 Phase: 1
 Protector: 7AM033-A5

Test Conditions

Test Type: Run
 Test Number: 3
 Poles: 6
 Volts: 208
 Hz: 60
 Rotation: REV
 Special Cond: M4 - LOW SPEED
 Speed Conn:
 TestBoard: CMD InLine Three Phase #2 Fixture #1
 Run Cap: 20
 Start Cap: 0µfd
 Environment: 23.3 Deg C 57 % RH 966 hPa
 Tested: 7/14/2016 9:57:52 AM
 Tested By: Bribiesca, Griselda
 Gear Ratio: 1:1
 Bearing Friction: -0.83 Oz-Ft
 Windage Torque: -0.55 Oz-Ft

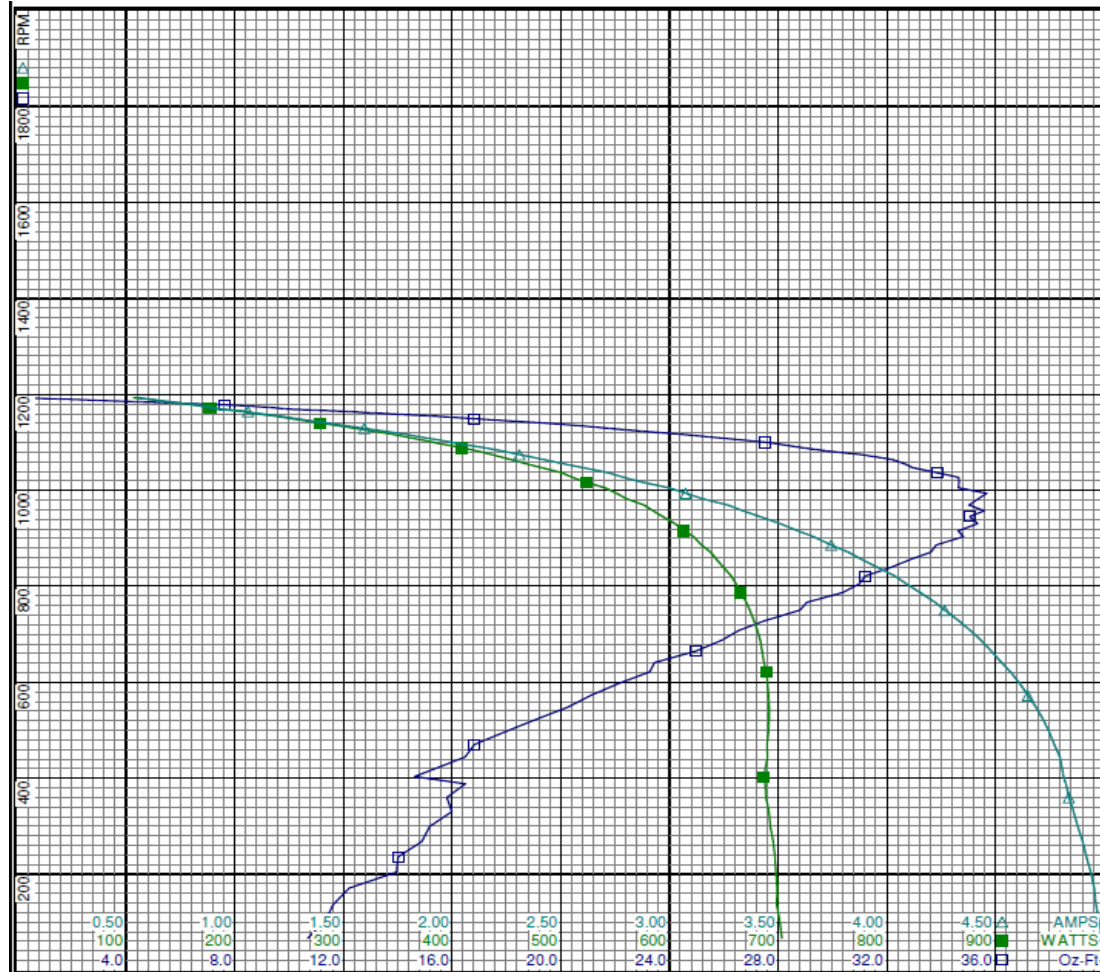
Special Points	Vline (V)	Vaux (V)	Vcap(V)	Iline (A)	Watts	RPM	Tq(Oz-ft)	HP	Eff (%)	PF (%)
	208.0	182.8	249.1	0.555	106.8	1193	0.00	0.000	0.0	92.6
	208.0	181.4	246.8	0.621	121.6	1189	2.05	0.029	17.8	94.2
	208.0	178.9	242.8	0.724	143.4	1183	5.19	0.073	38.0	95.2
	208.0	174.7	235.9	0.847	168.3	1176	8.52	0.119	52.8	95.6
	208.0	163.6	217.5	1.061	208.9	1164	12.23	0.169	60.5	94.6
	208.0	159.1	210.8	1.198	235.2	1155	15.16	0.209	66.1	94.4
	208.0	152.6	202.2	1.422	277.9	1140	19.32	0.262	70.4	94.0
	208.0	147.8	196.2	1.594	310.5	1129	21.77	0.293	70.3	93.7
	208.0	145.2	193.1	1.683	327.0	1123	22.91	0.306	69.9	93.4
25.689 OZ-FT	208.0	139.6	186.7	1.867	360.2	1110	25.69	0.339	70.3	92.7
	208.0	135.5	182.4	1.999	382.7	1100	27.54	0.361	70.3	92.0
	208.0	132.2	178.7	2.120	404.3	1091	28.66	0.372	68.7	91.7
	208.0	128.7	174.9	2.235	424.0	1081	29.84	0.384	67.6	91.2
	208.0	120.0	166.6	2.511	467.9	1055	32.66	0.410	65.4	89.6
	208.0	111.2	158.7	2.791	510.8	1027	34.65	0.423	61.8	88.0
BDT OZ-FT	208.0	102.1	151.7	3.076	551.3	994	35.68	0.422	57.1	86.2
	208.0	102.1	151.7	3.076	551.3	994	35.68	0.422	57.1	86.2
	208.0	93.5	146.1	3.338	584.9	957	35.59	0.405	51.7	84.2
	208.0	85.1	141.9	3.589	613.4	916	34.63	0.377	45.9	82.2
	208.0	77.1	138.8	3.823	637.8	871	33.63	0.349	40.8	80.2
	208.0	69.7	137.1	4.038	657.0	821	31.21	0.305	34.6	78.2
	208.0	63.1	136.5	4.223	670.7	766	29.05	0.265	29.5	76.4
	208.0	57.4	136.7	4.385	680.8	707	26.54	0.224	24.5	74.6
	208.0	51.9	137.6	4.529	686.9	641	23.44	0.179	19.4	72.9
	208.0	47.5	138.8	4.650	691.1	573	21.12	0.144	15.5	71.5
	208.0	43.2	140.2	4.747	691.2	497	17.97	0.106	11.5	70.0
	208.0	38.9	141.8	4.813	687.0	403	14.62	0.070	7.6	68.6
	208.0	37.6	144.2	4.859	691.5	330	15.99	0.063	6.8	68.4
	208.0	36.8	146.8	4.919	697.0	236	14.01	0.039	4.2	68.1
	208.0	36.5	149.9	4.962	698.7	136	11.61	0.019	2.0	67.7

DRAWING NO. PAGE 15 of 32 REV.
3LU92BG -

3LU92BG

REV.

-



Curve Descriptions:

Motor(1) Test 3 Run 208V 60 Hz 6P
M4 - LOW SPEED REV 20uifd Run
□ SPEED vs TORQUE
■ SPEED vs WATTS
△ SPEED vs ILine

Motor Ratings:

(1) K55HXHXLNS-2510 ID: 1

DRAWING NO.	PAGE 16 of 32	REV.
	3LU92BG	-

Performance Data



3LU92BG

REV.

-

Dayton Manufacturing Company

Motor Description

Model: 3LU92BG
 Motor ID: 1
 Poles: 6
 Volts: 208-230
 Frequency: 60
 HP: 1
 Speed: 1075
 Phase: 1
 Protector: 7AM033-A5

Test Conditions

Test Type: Start
 Test Number: 18
 Poles: 6
 Volts: 230
 Hz: 60
 Rotation:
 Special Cond: M1
 Speed Conn: M1
 TestBoard: CMD InLine Three Phase #2 Fixture #1
 Run Cap: 20
 Start Cap: 0µfd
 Environment: 23.7 Deg C 59 % RH 965 hPa
 Tested: 7/14/2016 8:59:55 AM
 Tested By: Bribiesca, Griselda
 Gear Ratio: 1:1
 Bearing Friction: -1.04 Oz-Ft
 Windage Torque: -3.45 Oz-Ft

Special Points	Vline (V)	Vaux (V)	Vcap (V)	Iline (A)	Watts	RPM	Tq (Oz-ft)	HP	Eff (%)	PF (%)
PUT OZ-FT	230.0	59.0	266.5	14.777	2511	23	26.65	0.007	0.2	73.9
	230.0	59.0	266.5	14.777	2511	23	26.65	0.007	0.2	73.9
	230.0	59.3	262.2	14.684	2502	125	30.77	0.046	1.4	74.1
	230.0	61.6	257.8	14.543	2491	228	38.87	0.105	3.2	74.5
	230.0	65.3	254.4	14.349	2475	324	45.92	0.177	5.3	75.0
	230.0	70.4	251.1	14.130	2459	414	53.99	0.266	8.1	75.6
	230.0	77.6	249.0	13.830	2438	495	60.34	0.356	10.9	76.7
	230.0	86.1	247.9	13.456	2412	572	70.66	0.481	14.9	77.9
	230.0	95.6	247.5	13.040	2376	643	79.83	0.611	19.2	79.2
	230.0	105.5	248.0	12.578	2329	707	87.43	0.736	23.6	80.5
	230.0	116.6	249.7	12.061	2272	766	94.87	0.866	28.4	81.9
	230.0	128.6	252.7	11.491	2202	821	101.10	0.988	33.5	83.3
	230.0	141.2	257.4	10.882	2121	870	106.00	1.097	38.6	84.7
	230.0	154.9	263.9	10.210	2025	916	109.94	1.198	44.1	86.2
	230.0	169.4	272.1	9.493	1916	957	111.82	1.274	49.6	87.8
	230.0	183.5	281.8	8.762	1793	993	110.58	1.308	54.4	89.0
	230.0	197.8	293.0	7.994	1658	1026	107.56	1.314	59.1	90.2
	230.0	211.3	304.8	7.239	1517	1054	102.22	1.283	63.1	91.1
	230.0	225.3	318.3	6.430	1354	1082	93.48	1.204	66.3	91.6
	230.0	237.6	331.2	5.677	1196	1104	83.07	1.092	68.1	91.6
	230.0	247.8	342.8	5.014	1048	1123	72.16	0.965	68.7	90.8
	230.0	256.6	354.1	4.387	899	1140	59.51	0.808	67.0	89.1
	230.0	263.1	363.9	3.857	767	1154	47.12	0.647	63.0	86.5
	230.0	267.7	372.6	3.411	650	1166	36.21	0.502	57.6	82.9
	230.0	271.4	380.7	3.082	549	1175	25.68	0.359	48.8	77.5
	230.0	273.7	386.2	2.900	473	1183	17.57	0.247	39.0	71.0
	230.0	275.7	390.7	2.795	412	1189	10.06	0.142	25.8	64.0
	230.0	276.7	393.3	2.752	367	1193	4.98	0.071	14.4	58.0
	230.0	277.7	395.8	2.740	326	1197	0.23	0.003	0.7	51.7
	230.0	277.8	395.9	2.740	324	1197	0.00	0.000	0.0	51.4

DRAWING NO. PAGE 17 of 32 REV.
3LU92BG -

3LU92BG

REV.

-



Curve Descriptions:

Motor(1) Test 18 Start 230V 60 Hz 6P
M1 M1 20ufd Run

- SPEED vs WATTS
- SPEED vs TORQUE
- △ SPEED vs ILine

Motor Ratings:

(1) K55HXHXLNS-2510 ID: 1

DRAWING NO.	PAGE 18 of 32	REV.
3LU92BG		-

3LU92BG

REV.

-

Dayton Manufacturing Company

Motor Description

Model: 3LU92BG
 Motor ID: 1
 Poles: 6
 Volts: 208-230
 Frequency: 60
 HP: 1
 Speed: 1075
 Phase: 1
 Protector: 7AM033-A5

Test Conditions

Test Type: Run
 Test Number: 4
 Poles: 6
 Volts: 230
 Hz: 60
 Rotation: REV
 Special Cond: M1 - HIGH SPEED
 Speed Conn: CMD InLine Three Phase #2 Fixture #1
 Run Cap: 20
 Start Cap: 0µfd
 Environment: 23.7 Deg C 59 % RH 965 hPa
 Tested: 7/14/2016 8:58:14 AM
 Tested By: Bribiesca, Griselda
 Gear Ratio: 1:1
 Bearing Friction: -1.24 Oz-Ft
 Windage Torque: -0.89 Oz-Ft

Special Points	Vline (V)	Vaux (V)	Vcap (V)	Iline (A)	Watts	RPM	Tq (Oz-ft)	HP	Eff (%)	PF (%)
	230.0	276.6	394.6	2.736	317	1194	0.00	0.000	0.0	50.4
	230.0	275.7	392.1	2.751	360	1190	4.80	0.068	14.1	56.9
	230.0	274.1	388.5	2.813	417	1185	11.75	0.166	29.6	64.5
	230.0	272.1	383.5	2.948	491	1178	20.30	0.285	43.2	72.5
	230.0	269.2	376.6	3.202	584	1169	30.15	0.420	53.6	79.3
	230.0	264.9	367.5	3.610	699	1158	41.85	0.577	61.6	84.2
	230.0	259.2	357.6	4.154	837	1144	54.75	0.746	66.4	87.6
	230.0	251.5	346.9	4.761	984	1129	66.93	0.900	68.2	89.9
	230.0	243.8	337.4	5.305	1109	1115	77.76	1.032	69.4	90.9
	230.0	241.4	334.7	5.465	1145	1111	80.48	1.064	69.3	91.1
91.332 OZ-FT	230.0	230.6	322.8	6.163	1296	1091	91.33	1.186	68.3	91.4
	230.0	229.7	321.9	6.215	1307	1090	92.12	1.195	68.2	91.4
	230.0	216.6	308.6	7.025	1471	1065	101.60	1.288	65.3	91.1
	230.0	216.5	308.6	7.027	1472	1065	101.62	1.288	65.3	91.1
	230.0	202.4	295.6	7.858	1631	1036	109.19	1.347	61.6	90.2
	230.0	188.3	284.1	8.642	1771	1006	113.46	1.359	57.3	89.1
BDT OZ-FT	230.0	173.0	273.1	9.466	1910	969	115.32	1.331	52.0	87.7
	230.0	173.0	273.1	9.466	1910	969	115.32	1.331	52.0	87.7
	230.0	158.8	264.3	10.207	2026	931	114.18	1.265	46.6	86.3
	230.0	145.0	257.5	10.893	2125	888	111.52	1.178	41.4	84.8
	230.0	131.8	252.4	11.529	2209	839	106.14	1.061	35.8	83.3
	230.0	119.8	249.1	12.090	2277	788	100.12	0.939	30.8	81.9
	230.0	107.9	247.2	12.625	2335	728	91.81	0.796	25.4	80.4
	230.0	97.6	246.8	13.080	2381	665	83.50	0.661	20.7	79.2
	230.0	88.4	247.3	13.470	2415	597	74.09	0.526	16.3	78.0
	230.0	80.0	248.4	13.804	2442	525	65.66	0.410	12.5	76.9
	230.0	73.2	250.0	14.052	2456	447	57.66	0.307	9.3	76.0
	230.0	66.5	252.9	14.263	2471	360	49.96	0.214	6.5	75.3
	230.0	62.8	256.5	14.408	2485	269	44.13	0.141	4.2	75.0
	230.0	60.5	260.4	14.508	2496	171	35.98	0.073	2.2	74.8
	230.0	59.1	265.1	14.565	2503	66	32.38	0.025	0.8	74.7



3LU92BG

REV.

-



Curve Descriptions:

Motor(1) Test 4 Run 230V 60 Hz 6P
M1 - HIGH SPEED REV 20ufd Run

- SPEED vs TORQUE
- SPEED vs WATTS
- △ SPEED vs ILine

Motor Ratings:

(1) K55HXHLNS-2510 ID: 1

2.0 4.0 6.0 8.0 10.0 12.0 14.0 16.0 18.0 AMPS
400 800 1200 1600 2000 2400 2800 3200 3600 WATTS
20 40 60 80 100 120 140 160 180 Oz-Ft

DRAWING NO.	PAGE 20 of 32	REV.
3LU92BG		-

Performance Data



3LU92BG

REV.

-

Dayton Manufacturing Company

Motor Description

Model: 3LU92BG
 Motor ID: 1
 Poles: 6
 Volts: 208-230
 Frequency: 60
 HP: 1
 Speed: 1075
 Phase: 1
 Protector: 7AM033-A5

Test Conditions

Test Type: Start
 Test Number: 19
 Poles: 6
 Volts: 230
 Hz: 60
 Rotation:
 Special Cond: M2
 Speed Conn: M2
 TestBoard: CMD InLine Three Phase #2 Fixture #1
 Run Cap: 20
 Start Cap: 0µfd
 Environment: 23.3 Deg C 57 % RH 966 hPa
 Tested: 7/14/2016 9:34:44 AM
 Tested By: Bribiesca, Griselda
 Gear Ratio: 1:1
 Bearing Friction: -0.96 Oz-Ft
 Windage Torque: -3.24 Oz-Ft

Special Points PUT OZ-FT	Vline (V)	Vaux (V)	Vcap (V)	Iline (A)	Watts	RPM	Tq (Oz-ft)	HP	Eff (%)	PF (%)
	230.0	51.7	228.0	10.570	1778.8	24	18.67	0.005	0.2	73.2
	230.0	51.7	228.0	10.570	1778.8	24	18.67	0.005	0.2	73.2
	230.0	52.1	223.3	10.506	1768.7	132	22.76	0.036	1.5	73.2
	230.0	53.8	219.0	10.406	1760.2	232	28.89	0.080	3.4	73.5
	230.0	56.4	215.1	10.270	1746.3	327	34.32	0.134	5.7	73.9
	230.0	60.0	212.2	10.132	1734.6	413	37.80	0.186	8.0	74.4
	230.0	66.5	210.1	9.931	1724.7	496	43.39	0.256	11.1	75.5
	230.0	74.0	209.0	9.679	1710.3	572	50.22	0.342	14.9	76.8
	230.0	81.8	208.3	9.390	1687.9	642	56.91	0.435	19.2	78.2
	230.0	91.6	208.4	9.015	1654.2	715	64.28	0.547	24.7	79.8
	230.0	99.7	209.6	8.684	1615.9	764	67.89	0.618	28.5	80.9
	230.0	110.1	212.0	8.273	1569.0	819	72.90	0.711	33.8	82.5
	230.0	120.8	215.7	7.849	1516.3	868	76.58	0.791	38.9	84.0
	230.0	132.7	221.1	7.362	1449.4	914	79.09	0.861	44.3	85.6
	230.0	145.9	228.7	6.815	1367.3	957	80.52	0.918	50.1	87.2
	230.0	158.4	237.4	6.280	1281.5	994	80.01	0.946	55.1	88.7
	230.0	170.1	246.4	5.778	1197.0	1024	78.43	0.956	59.6	90.1
	230.0	183.7	258.2	5.165	1085.3	1055	73.75	0.926	63.7	91.4
	230.0	196.3	270.6	4.576	971.1	1082	67.56	0.870	66.8	92.3
	230.0	207.7	282.4	4.027	861.3	1104	60.96	0.801	69.4	93.0
	230.0	218.1	294.0	3.515	754.4	1123	52.33	0.700	69.2	93.3
	230.0	227.1	304.8	3.044	651.5	1140	43.81	0.594	68.1	93.1
	230.0	234.6	314.9	2.622	555.7	1153	35.40	0.486	65.3	92.1
	230.0	242.8	328.1	2.154	448.2	1167	24.64	0.342	57.0	90.5
	230.0	246.6	335.7	1.947	396.6	1175	18.91	0.264	49.7	88.6
	230.0	249.8	342.5	1.749	339.3	1183	12.93	0.182	40.0	84.3
	230.0	252.3	347.7	1.590	284.9	1189	7.11	0.101	26.4	77.9
	230.0	253.6	350.6	1.501	248.5	1193	3.10	0.044	13.2	72.0
	230.0	254.6	352.7	1.449	220.9	1196	0.00	0.000	0.0	66.3

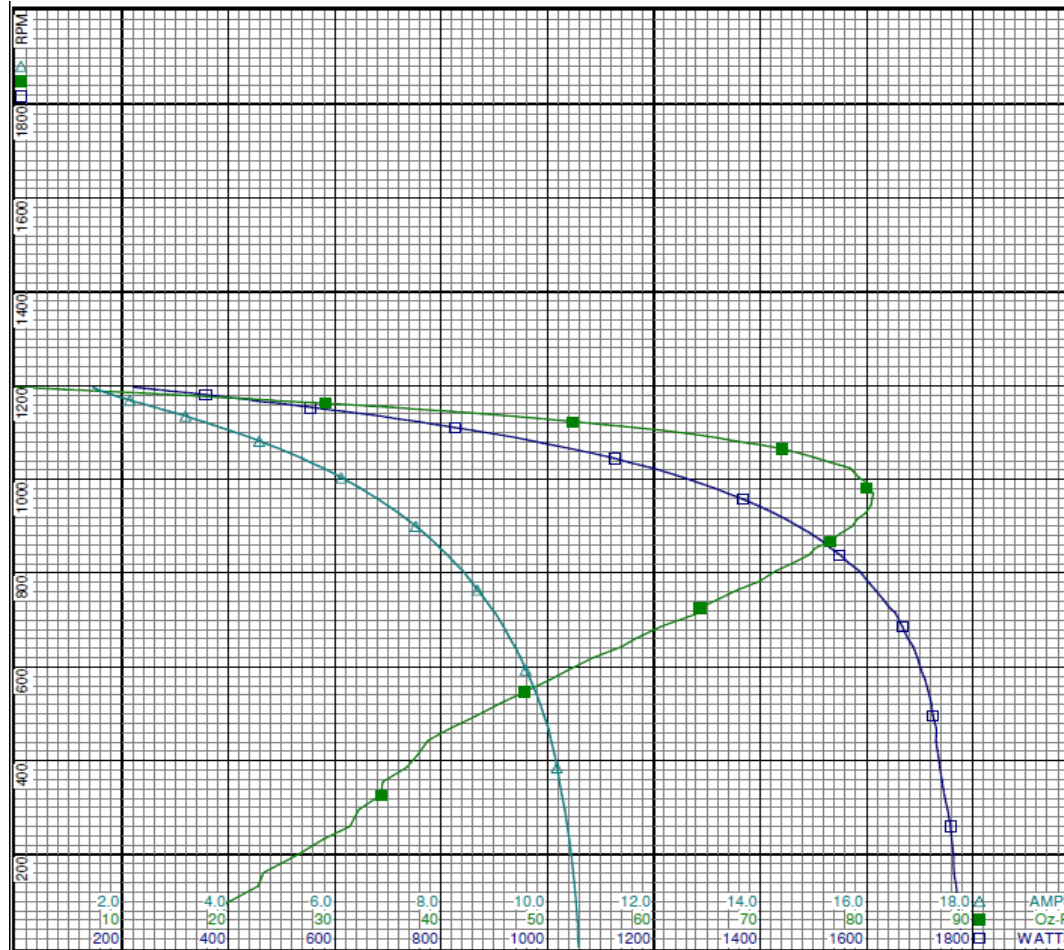
DRAWING NO. PAGE 21 of 32 REV.
3LU92BG -



3LU92BG

REV.

-



Curve Descriptions:

Motor(1) Test 19 Start 230V 60 Hz 6P
M2 M2 20ufd Run

- SPEED vs WATTS
- SPEED vs TORQUE
- △ SPEED vs ILine

Motor Ratings:

(1) K55HXHXLNS-2510 ID: 1

DRAWING NO.	PAGE 22 of 32	REV.
3LU92BG		-



3LU92BG

REV.

-

Dayton Manufacturing Company

Motor Description

Test Conditions

Model:	3LU92BG	Test Type:	Run	Run Cap:	20
Motor ID:	1	Test Number:	5	Start Cap:	0µfd
Poles:	6	Poles:	6	Environment:	23.3 Deg C 57 % RH 966 hPa
Volts:	208-230	Volts:	230	Tested:	7/14/2016 9:33:31 AM
Frequency:	60	Hz:	60	Tested By:	Briebesca, Griselda
HP:	1	Rotation:	REV	Gear Ratio:	1:1
Speed:	1075	Special Cond:	M2 - MEDIUM-HIGH SPEED	Bearing Friction:	-0.85 Oz-Ft
Phase:	1	Speed Conn:		Windage Torque:	-1.33 Oz-Ft
Protector:	7AM033-A5	TestBoard:	CMD InLine Three Phase #2 Fixture #1		

Special Points	Vline (V)	Vaux (V)	Vcap (V)	Iline (A)	Watts	RPM	Tq (Oz-ft)	HP	Eff (%)	PF (%)
	230.0	253.9	352.0	1.447	220.3	1194	0.00	0.000	0.0	66.2
	230.0	252.9	349.7	1.507	250.5	1190	3.64	0.052	15.3	72.2
	230.0	251.2	346.2	1.620	294.4	1185	8.57	0.121	30.6	79.0
	230.0	248.6	340.6	1.791	350.9	1178	14.61	0.205	43.5	85.2
	230.0	244.3	332.4	2.011	411.4	1169	21.63	0.301	54.6	89.0
	230.0	237.9	320.3	2.385	499.8	1159	30.72	0.424	63.3	91.1
	230.0	230.6	309.4	2.830	602.1	1144	40.68	0.554	68.7	92.5
	230.0	222.4	299.0	3.293	705.3	1129	49.38	0.664	70.2	93.1
	230.0	221.0	297.3	3.370	722.0	1127	50.71	0.680	70.3	93.2
	230.0	212.4	287.3	3.806	815.0	1112	58.29	0.772	70.6	93.1
59.59 OZ-FT	230.0	210.9	285.6	3.884	831.4	1109	59.59	0.787	70.6	93.1
	230.0	202.3	276.4	4.315	919.3	1093	65.73	0.855	69.4	92.6
	230.0	198.1	272.0	4.520	960.2	1086	67.82	0.877	68.1	92.4
	230.0	188.4	262.3	4.986	1051.0	1064	73.84	0.936	66.4	91.7
	230.0	175.9	250.6	5.575	1160.6	1037	79.00	0.975	62.7	90.5
	230.0	162.5	239.6	6.185	1267.3	1005	82.04	0.981	57.8	89.1
BDT OZ-FT	230.0	149.8	230.4	6.737	1357.7	970	83.36	0.963	52.9	87.6
	230.0	137.1	222.6	7.278	1439.7	930	82.75	0.916	47.5	86.0
	230.0	125.1	216.6	7.780	1510.5	887	80.51	0.850	42.0	84.4
	230.0	113.4	212.3	8.248	1569.5	838	76.49	0.763	36.3	82.7
	230.0	103.0	209.5	8.657	1617.3	787	72.34	0.677	31.2	81.2
	230.0	93.1	208.1	9.036	1657.0	729	66.69	0.579	26.1	79.7
	230.0	84.2	207.9	9.370	1688.8	666	60.58	0.481	21.2	78.4
	230.0	76.2	208.5	9.658	1711.6	598	53.93	0.384	16.7	77.1
	230.0	68.7	209.7	9.905	1727.1	523	46.42	0.289	12.5	75.8
	230.0	62.8	211.2	10.088	1734.7	445	41.38	0.219	9.4	74.8
	230.0	57.2	213.9	10.229	1743.4	358	37.24	0.159	6.8	74.1
	230.0	54.5	217.7	10.337	1756.5	268	32.97	0.105	4.5	73.9
	230.0	52.2	222.4	10.432	1765.2	154	22.47	0.041	1.7	73.6
	230.0	51.9	226.0	10.470	1771.8	66	23.05	0.018	0.8	73.6

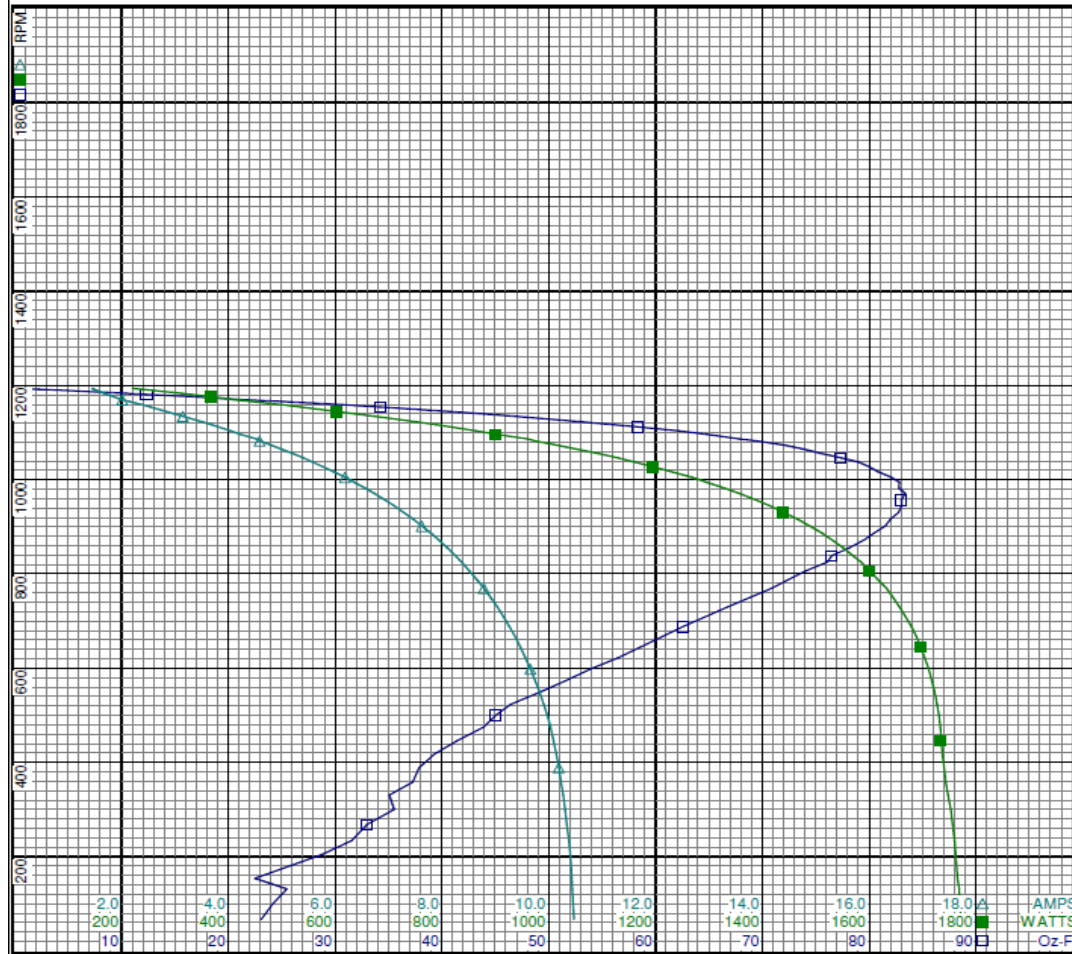
DRAWING NO.	PAGE 23 of 32	REV.
3LU92BG		-



3LU92BG

REV.

-



Curve Descriptions:

Motor(1) Test 5 Run 230V 60 Hz 6P
M2 - MEDIUM-HIGH SPEED REV 20ufd Run

- SPEED vs TORQUE
- SPEED vs WATTS
- △ SPEED vs ILine

Motor Ratings:

(1) K55HXHXLNS-2510 ID: 1

DRAWING NO.	PAGE 24 of 32	REV.
3LU92BG		-

Performance Data



3LU92BG

REV.

-

Dayton Manufacturing Company

Motor Description

Model: 3LU92BG
 Motor ID: 1
 Poles: 6
 Volts: 208-230
 Frequency: 60
 HP: 1
 Speed: 1075
 Phase: 1
 Protector: 7AM033-A5

Test Conditions

Test Type: Start
 Test Number: 20
 Poles: 6
 Volts: 230
 Hz: 60
 Rotation:
 Special Cond: M3
 Speed Conn: M3
 TestBoard: CMD InLine Three Phase #2 Fixture #1
 Run Cap: 20
 Start Cap: 0µfd
 Environment: 23.3 Deg C 57 % RH 966 hPa
 Tested: 7/14/2016 9:49:40 AM
 Tested By: Bribiesca, Griselda
 Gear Ratio: 1:1
 Bearing Friction: -0.88 Oz-Ft
 Windage Torque: -2.79 Oz-Ft

Special Points PUT OZ-FT	Vline (V)	Vaux (V)	Vcap(V)	Iline (A)	Watts	RPM	Tq(Oz-ft)	HP	Eff (%)	PF (%)
	230.0	42.2	182.1	6.687	1066.8	22	7.83	0.002	0.1	69.4
	230.0	42.2	182.1	6.687	1066.8	22	7.83	0.002	0.1	69.4
	230.0	41.9	177.4	6.651	1063.1	128	13.94	0.021	1.5	69.5
	230.0	42.9	174.0	6.585	1057.1	231	17.16	0.047	3.3	69.8
	230.0	43.9	170.8	6.504	1048.8	325	20.28	0.079	5.6	70.1
	230.0	46.8	167.8	6.414	1042.8	413	22.71	0.112	8.0	70.7
	230.0	51.1	166.1	6.315	1042.0	493	25.14	0.147	10.6	71.7
	230.0	56.7	164.7	6.164	1038.1	571	29.64	0.201	14.5	73.2
	230.0	62.8	163.4	5.985	1028.0	641	34.10	0.260	18.9	74.7
	230.0	69.4	162.9	5.781	1013.2	705	38.06	0.319	23.5	76.2
	230.0	76.7	163.0	5.542	992.9	766	41.89	0.382	28.7	77.9
	230.0	84.8	164.3	5.283	967.3	820	44.90	0.438	33.8	79.6
	230.0	93.6	166.8	5.001	936.3	870	47.62	0.493	39.3	81.4
	230.0	102.9	170.5	4.707	901.4	915	49.72	0.542	44.8	83.3
	230.0	113.0	176.1	4.365	854.2	957	50.57	0.576	50.3	85.1
	230.0	123.0	182.8	4.024	803.2	993	50.10	0.592	55.0	86.8
	230.0	133.2	190.7	3.674	747.6	1025	49.08	0.599	59.8	88.5
	230.0	143.9	200.1	3.293	682.4	1055	46.92	0.589	64.4	90.1
	230.0	154.0	209.7	2.934	617.4	1081	43.11	0.555	67.1	91.5
	230.0	164.1	220.5	2.566	546.5	1104	38.57	0.507	69.2	92.6
	230.0	173.1	230.5	2.224	478.3	1124	33.51	0.448	69.9	93.5
	230.0	181.6	240.9	1.897	409.8	1140	28.06	0.381	69.3	93.9
	230.0	188.3	249.4	1.639	355.1	1154	22.29	0.306	64.3	94.2
	230.0	195.2	259.7	1.372	297.5	1166	16.88	0.234	58.7	94.3
	230.0	202.9	272.8	1.172	254.8	1175	12.66	0.177	51.9	94.5
	230.0	208.3	281.8	1.024	220.5	1183	8.07	0.114	38.5	93.6
	230.0	211.4	287.4	0.870	183.0	1189	4.14	0.059	23.9	91.4
	230.0	213.0	290.2	0.781	159.0	1193	1.44	0.020	9.6	88.6
	230.0	213.8	291.5	0.742	147.7	1195	0.00	0.000	0.0	86.5

DRAWING NO. PAGE 25 of 32 REV.
3LU92BG -

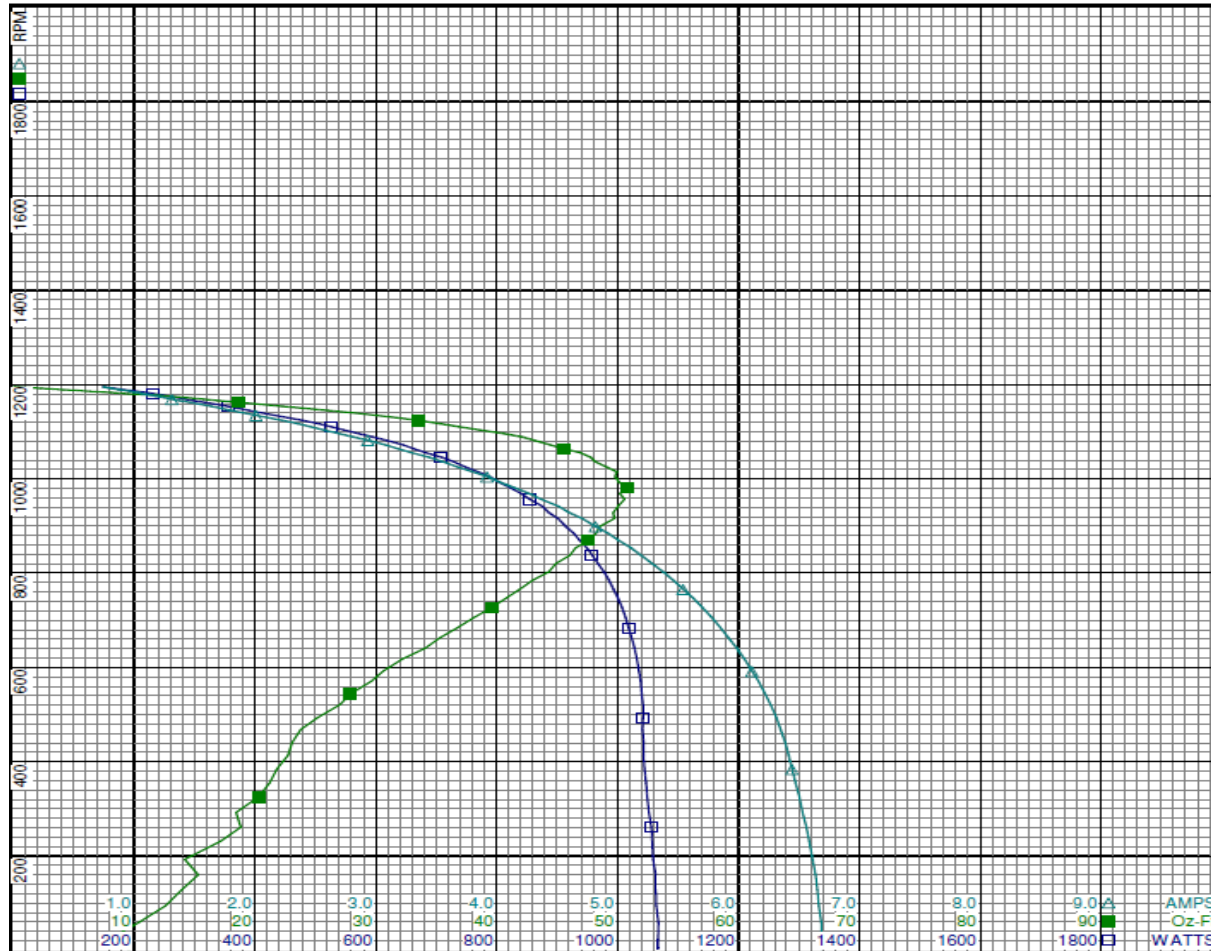
Performance Data



3LU92BG

REV.

-



Curve Descriptions:

Motor(1) Test 20 Start 230V 60 Hz 6P
M3 M3 20ufd Run

- SPEED vs WATTS
- SPEED vs TORQUE
- △ SPEED vs ILLine

Motor Ratings:

(1) K55HXHXLNS-2510 ID: 1

DRAWING NO.	PAGE 26 of 32	REV.
3LU92BG		-

Dayton Electric Mfg. Co. Lake Forest, IL 60045 USA



3LU92BG

REV.

-

Dayton Manufacturing Company

Motor Description

Test Conditions

Model:	3LU92BG	Test Type:	Run	Run Cap:	20
Motor ID:	1	Test Number:	14	Start Cap:	0ufd
Poles:	6	Poles:	6	Environment:	23.3 Deg C 57 % RH 966 hPa
Volts:	208-230	Volts:	230	Tested:	7/14/2016 9:37:32 AM
Frequency:	60	Hz:	60	Tested By:	Bribiesca, Griselda
HP:	1	Rotation:	REV	Gear Ratio:	1:1
Speed:	1075	Special Cond:	M3 - MEDIUM-LOW SPEED	Bearing Friction:	-0.95 Oz-Ft
Phase:	1	Speed Conn:		Windage Torque:	-1.43 Oz-Ft
Protector:	7AM033-A5	TestBoard:	CMD InLine Three Phase #2 Fixture #1		

Special Points	Vline (V)	Vaux (V)	Vcap (V)	Iline (A)	Watts	RPM	Tq (Oz-ft)	HP	Eff (%)	PF (%)
	230.0	214.2	291.8	0.735	146.1	1192	0.00	0.000	0.0	86.4
	230.0	212.6	289.0	0.824	171.0	1189	2.82	0.040	17.4	90.3
	230.0	210.0	284.3	0.962	205.7	1183	6.67	0.094	34.1	93.0
	230.0	205.8	277.3	1.103	239.5	1175	11.03	0.154	48.1	94.4
	230.0	198.4	264.3	1.290	280.6	1166	15.96	0.222	58.9	94.6
	230.0	190.6	252.0	1.562	339.1	1154	21.32	0.293	64.4	94.4
	230.0	182.8	241.9	1.862	403.5	1139	27.62	0.375	69.3	94.2
	230.0	176.0	233.7	2.120	457.6	1125	32.79	0.439	71.6	93.8
	230.0	174.9	232.4	2.161	465.9	1123	33.56	0.449	71.8	93.7
	230.0	165.7	221.7	2.521	539.2	1103	38.61	0.507	70.2	93.0
38.704 OZ-FT	230.0	165.5	221.5	2.528	540.5	1103	38.70	0.508	70.1	93.0
	230.0	157.6	213.1	2.814	596.5	1085	42.91	0.554	69.3	92.2
	230.0	156.2	211.7	2.861	605.3	1082	43.65	0.562	69.3	92.0
	230.0	145.4	200.9	3.260	679.3	1055	47.04	0.591	64.9	90.6
	230.0	135.3	192.0	3.613	740.4	1027	49.71	0.607	61.2	89.1
	230.0	124.9	183.6	3.979	800.3	993	51.35	0.607	56.6	87.4
BDT OZ-FT	230.0	117.8	178.7	4.219	837.2	969	52.21	0.603	53.7	86.3
	230.0	114.4	176.5	4.335	854.1	957	51.53	0.587	51.3	85.7
	230.0	104.2	170.8	4.676	901.7	916	50.95	0.555	46.0	83.8
	230.0	94.9	167.0	4.974	938.4	871	49.17	0.510	40.5	82.0
	230.0	86.0	164.3	5.259	970.8	821	47.15	0.461	35.4	80.3
	230.0	77.9	163.1	5.514	995.8	767	43.84	0.400	30.0	78.5
	230.0	70.5	162.8	5.740	1014.7	708	39.99	0.337	24.8	76.9
	230.0	63.8	163.4	5.937	1028.7	643	35.67	0.273	19.8	75.3
	230.0	57.6	164.5	6.108	1038.3	573	31.56	0.215	15.5	73.9
	230.0	52.1	165.9	6.251	1042.9	497	27.34	0.162	11.6	72.5
	230.0	47.5	167.7	6.347	1043.0	416	23.74	0.118	8.4	71.4
	230.0	44.9	170.4	6.420	1047.8	328	21.81	0.085	6.1	71.0
	230.0	43.4	173.7	6.497	1056.6	234	20.31	0.057	4.0	70.7
	230.0	42.6	177.1	6.554	1063.1	134	16.03	0.026	1.8	70.5

DRAWING NO.	PAGE 27 of 32	REV.
	3LU92BG	-

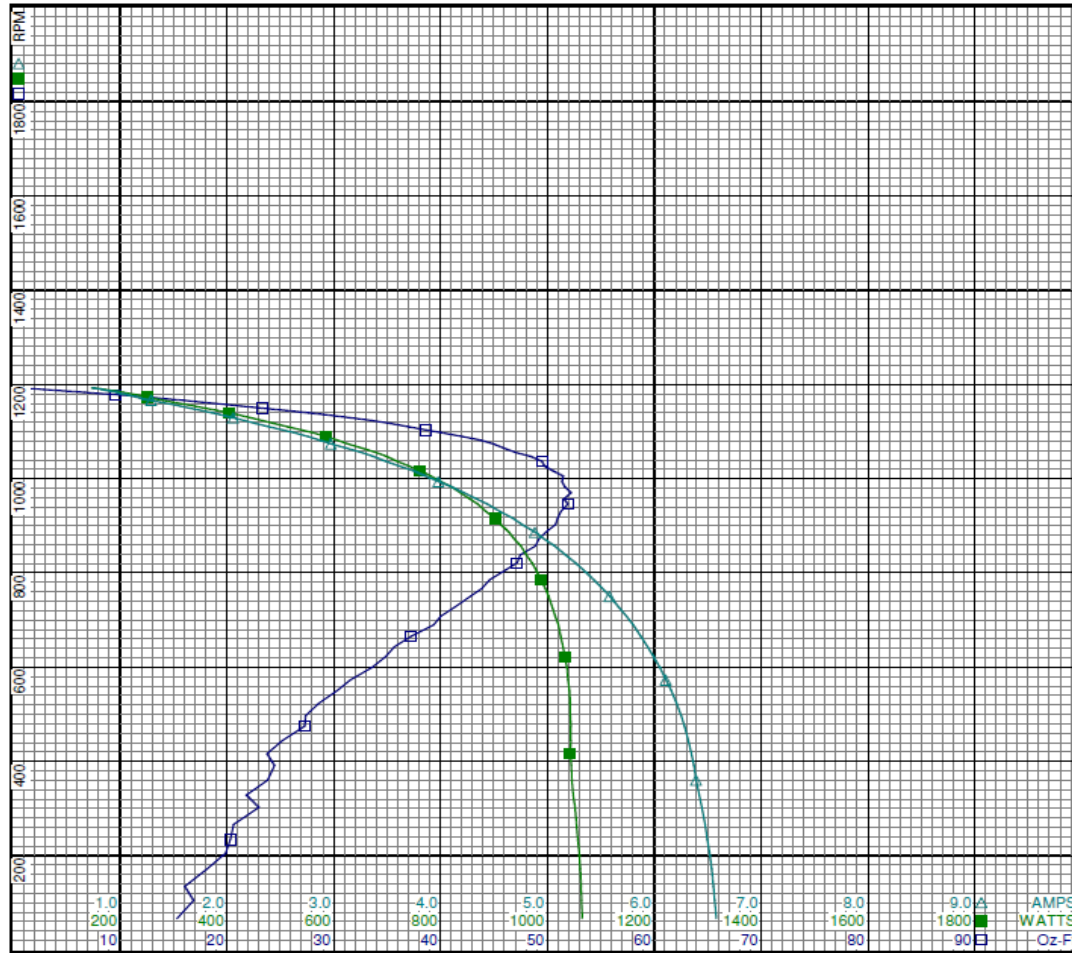
Performance Data



3LU92BG

REV.

-



Curve Descriptions:

Motor(1) Test 14 Run 230V 60 Hz 6P
M3 - MEDIUM-LOW SPEED REV 20ufd Run

- SPEED vs TORQUE
- SPEED vs WATTS
- △ SPEED vs ILine

Motor Ratings:

(1) K55HXHLNS-2510 ID: 1

DRAWING NO.	PAGE 28 of 32	REV.
3LU92BG		0

Dayton Electric Mfg. Co. Lake Forest, IL 60045 USA



3LU92BG

REV.

-

Dayton Manufacturing Company

Motor Description

Model: 3LU92BG
 Motor ID: 1
 Poles: 6
 Volts: 208-230
 Frequency: 60
 HP: 1
 Speed: 1075
 Phase: 1
 Protector: 7AM033-A5

Test Conditions

Test Type: Start
 Test Number: 22
 Poles: 6
 Volts: 230
 Hz: 60
 Rotation:
 Special Cond: M4
 Speed Conn: M4
 TestBoard: CMD InLine Three Phase #2 Fixture #1
 Run Cap: 20
 Start Cap: 0µfd
 Environment: 23.3 Deg C 57 % RH 966 hPa
 Tested: 7/14/2016 9:55:06 AM
 Tested By: Bribiesca, Griselda
 Gear Ratio: 1:1
 Bearing Friction: -0.91 Oz-Ft
 Windage Torque: -2.52 Oz-Ft

Special Points PUT OZ-FT	Vline (V)	Vaux (V)	Vcap (V)	Iline (A)	Watts	RPM	Tq (Oz-ft)	HP	Eff (%)	PF (%)
	230.0	40.0	169.5	5.711	900.5	16	8.12	0.002	0.1	68.6
	230.0	40.0	169.5	5.711	900.5	16	8.12	0.002	0.1	68.6
	230.0	39.4	164.9	5.673	893.4	124	10.12	0.015	1.2	68.5
	230.0	39.8	161.4	5.617	889.2	226	13.48	0.036	3.0	68.8
	230.0	41.2	158.5	5.540	882.7	320	16.33	0.062	5.3	69.3
	230.0	42.9	155.7	5.469	875.8	410	17.83	0.087	7.4	69.6
	230.0	47.1	153.9	5.387	876.4	491	19.96	0.117	9.9	70.7
	230.0	52.1	152.6	5.270	874.9	566	23.76	0.160	13.7	72.2
	230.0	57.5	151.3	5.121	868.0	637	27.87	0.211	18.2	73.7
	230.0	63.4	150.6	4.950	856.7	702	31.19	0.261	22.7	75.3
	230.0	70.6	150.5	4.736	839.7	765	35.21	0.321	28.5	77.1
	230.0	77.3	151.4	4.539	821.6	816	37.25	0.362	32.9	78.7
	230.0	85.3	153.3	4.303	797.6	867	39.92	0.412	38.5	80.6
	230.0	94.1	156.8	4.033	764.9	913	41.38	0.450	43.8	82.5
	230.0	103.1	161.3	3.763	730.9	954	42.38	0.481	49.1	84.4
	230.0	112.8	167.7	3.456	686.2	992	42.82	0.506	55.0	86.3
	230.0	122.2	174.8	3.158	640.1	1024	41.84	0.510	59.5	88.1
	230.0	131.8	183.1	2.849	588.1	1054	39.43	0.495	62.7	89.8
	230.0	141.7	192.9	2.521	528.0	1080	36.47	0.469	66.2	91.1
	230.0	150.8	202.4	2.207	469.2	1103	33.15	0.435	69.2	92.4
	230.0	159.9	212.6	1.903	408.4	1123	28.27	0.378	69.0	93.3
	230.0	167.1	221.3	1.642	354.9	1139	23.84	0.323	68.0	94.0
	230.0	173.9	230.2	1.396	302.4	1153	19.26	0.264	65.2	94.2
	230.0	180.7	240.2	1.169	253.9	1165	14.74	0.204	60.1	94.5
	230.0	188.5	253.2	1.000	218.6	1175	10.99	0.154	52.5	95.0
	230.0	194.3	263.0	0.853	184.9	1182	7.06	0.099	40.1	94.3
	230.0	197.3	268.3	0.716	152.0	1188	3.62	0.051	25.1	92.3
	230.0	198.9	271.0	0.638	132.9	1193	1.21	0.017	9.7	90.5
	230.0	199.6	272.3	0.595	121.1	1195	0.00	0.000	0.0	88.5

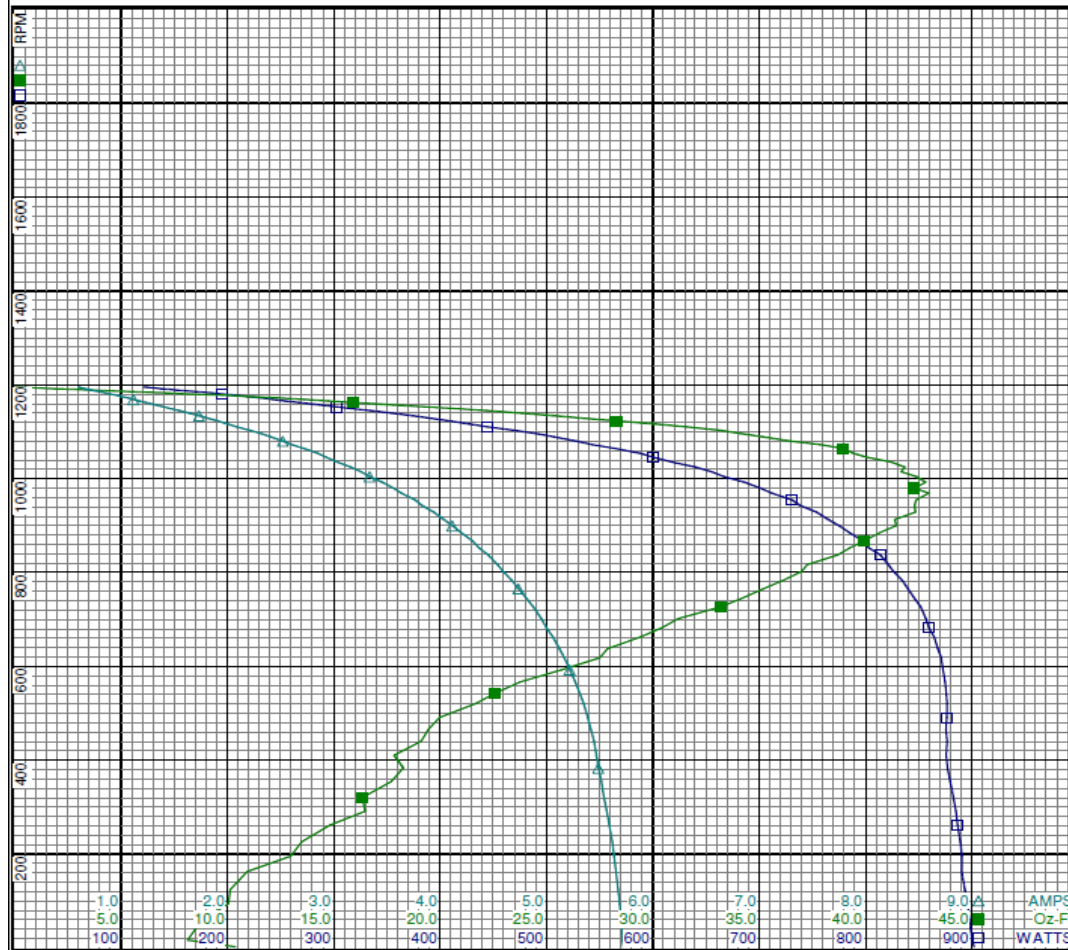
DRAWING NO. PAGE 29 of 32 REV.
3LU92BG 0

Performance Data



3LU92BG

REV.
0



Curve Descriptions:
 Motor(1) Test 22 Start 230V 60 Hz 6P
 M4 M4 20ufd Run
 □ SPEED vs WATTS
 ■ SPEED vs TORQUE
 △ SPEED vs ILine

Motor Ratings:
 (1) K55HXHXLNS-2510 ID: 1

DRAWING NO.	PAGE 30 of 32	REV.
3LU92BG		0

Dayton Electric Mfg. Co. Lake Forest, IL 60045 USA

3LU92BG

REV.
0

Dayton Manufacturing Company

Motor Description

Model: 3LU92BG
 Motor ID: 1
 Poles: 6
 Volts: 208-230
 Frequency: 60
 HP: 1
 Speed: 1075
 Phase: 1
 Protector: 7AM033-A5

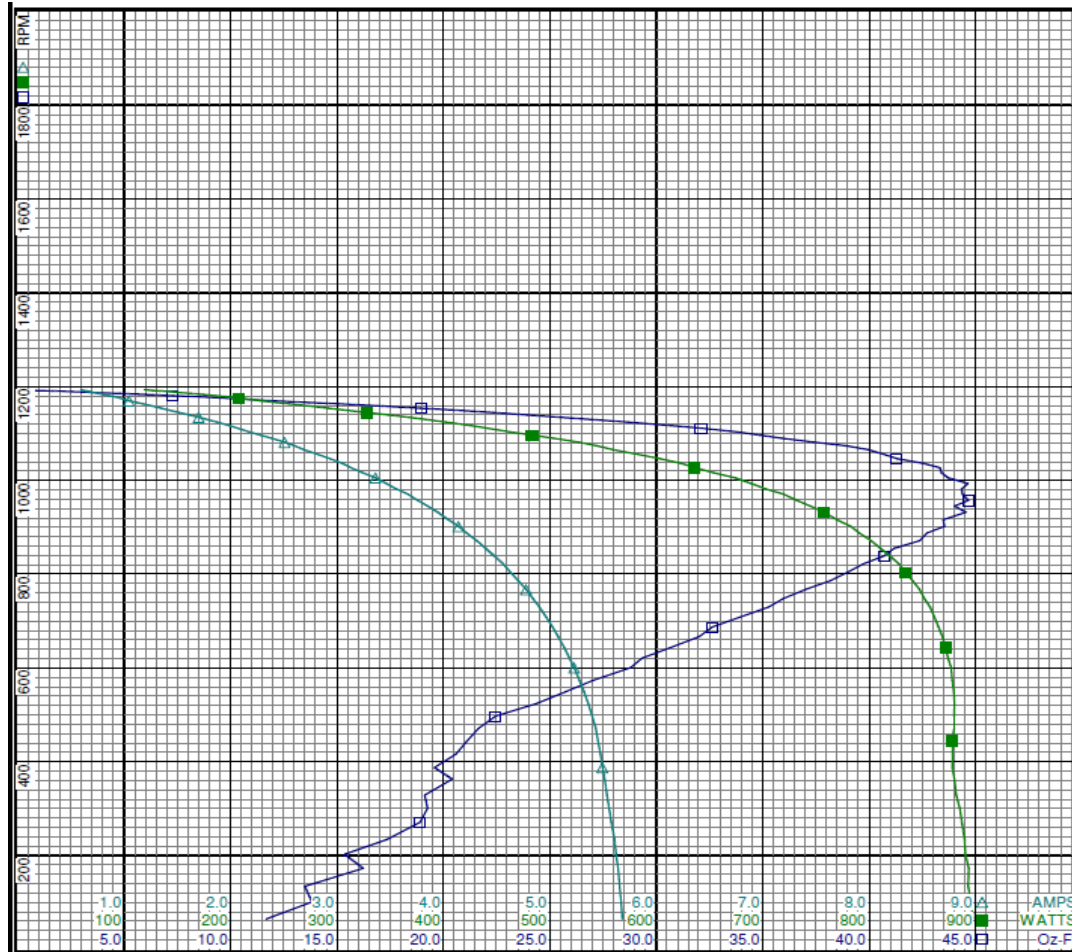
Test Conditions

Test Type: Run
 Test Number: 6
 Poles: 6
 Volts: 230
 Hz: 60
 Rotation: REV
 Special Cond: M4 - LOW SPEED
 Speed Conn: CMD InLine Three Phase #2 Fixture #1
 Run Cap: 20
 Start Cap: 0µfd
 Environment: 23.3 Deg C 57 % RH 966 hPa
 Tested: 7/14/2016 9:53:42 AM
 Tested By: Bribiesca, Griselda
 Gear Ratio: 1:1
 Bearing Friction: -0.84 Oz-Ft
 Windage Torque: -1.27 Oz-Ft

Special Points	Vline (V)	Vaux (V)	Vcap(V)	Iline (A)	Watts	RPM	Tq(Oz-ft)	HP	Eff (%)	PF (%)
	230.0	199.4	272.4	0.588	118.8	1193	0.00	0.000	0.0	87.8
	230.0	198.6	270.7	0.642	133.9	1191	1.61	0.023	12.8	90.7
	230.0	196.5	266.9	0.760	162.6	1185	4.77	0.067	30.9	93.1
	230.0	192.8	260.3	0.909	198.1	1178	8.47	0.119	44.7	94.8
	230.0	186.0	248.9	1.045	228.1	1169	12.07	0.168	54.9	94.9
	230.0	177.5	235.3	1.264	274.3	1158	17.13	0.236	64.2	94.3
	230.0	170.7	225.9	1.514	327.8	1144	22.32	0.304	69.2	94.2
	230.0	163.4	216.7	1.780	383.7	1129	26.98	0.363	70.5	93.8
	230.0	163.1	216.3	1.791	386.1	1129	27.19	0.365	70.6	93.7
31.86 OZ-FT	230.0	155.5	207.6	2.050	438.4	1112	31.86	0.422	71.8	93.0
	230.0	155.1	207.1	2.063	441.0	1111	32.10	0.425	71.8	92.9
	230.0	147.0	198.2	2.351	497.1	1092	35.58	0.462	69.4	92.0
	230.0	146.1	197.2	2.382	503.3	1090	35.89	0.465	69.0	91.8
	230.0	136.9	187.9	2.686	559.1	1065	39.94	0.507	67.6	90.5
	230.0	126.4	177.9	3.048	623.2	1036	42.53	0.525	62.8	88.9
	230.0	116.8	170.1	3.362	674.1	1005	43.71	0.523	57.9	87.2
	230.0	107.3	163.4	3.664	719.4	971	44.39	0.513	53.2	85.4
BDT OZ-FT	230.0	104.2	161.6	3.756	731.9	957	44.66	0.509	51.9	84.7
	230.0	98.2	158.2	3.944	757.6	932	44.54	0.494	48.6	83.5
	230.0	89.2	154.2	4.216	790.6	887	42.72	0.451	42.6	81.5
	230.0	80.6	151.6	4.476	819.4	839	40.70	0.406	37.0	79.6
	230.0	73.0	150.3	4.702	840.7	786	38.18	0.357	31.7	77.7
	230.0	66.1	150.0	4.901	857.2	730	35.28	0.306	26.7	76.0
	230.0	60.0	150.7	5.077	868.9	667	32.02	0.254	21.8	74.4
	230.0	54.4	151.8	5.229	877.1	600	28.79	0.206	17.5	72.9
	230.0	49.2	153.3	5.360	880.1	523	24.36	0.152	12.9	71.4
	230.0	44.7	154.6	5.451	878.0	444	21.10	0.112	9.5	70.0
	230.0	41.7	156.9	5.514	880.1	362	20.40	0.088	7.5	69.4
	230.0	40.4	160.1	5.576	887.1	271	18.90	0.061	5.1	69.2
	230.0	39.6	163.1	5.640	893.5	172	16.22	0.033	2.8	68.9
	230.0	39.8	167.5	5.679	897.3	64	11.66	0.009	0.7	68.7

3LU92BG

REV.
0



Curve Descriptions:

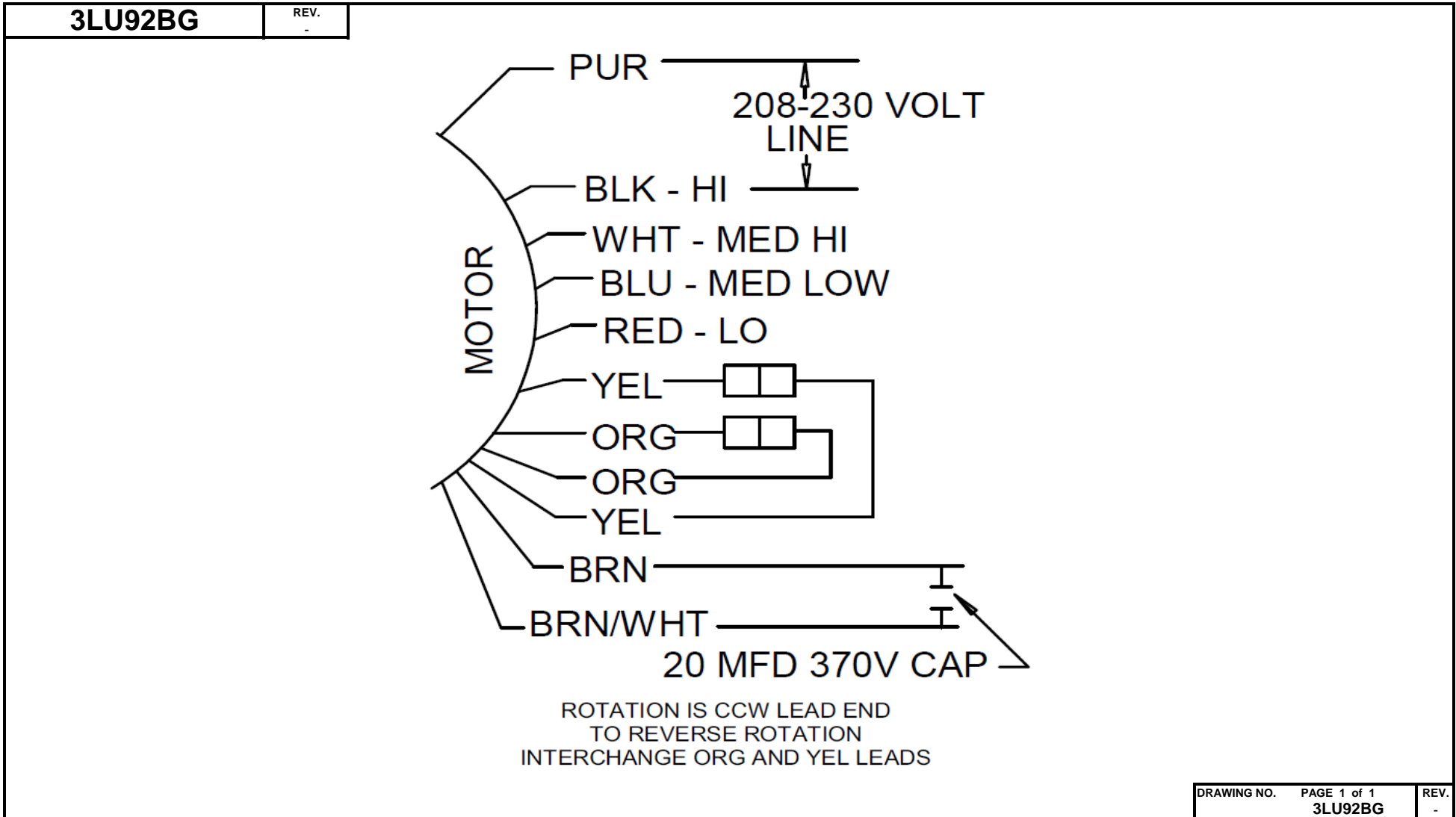
Motor(1) Test 6 Run 230V 60 Hz 6P
M4 - LOW SPEED REV 20ufd Run

- SPEED vs TORQUE
- SPEED vs WATTS
- △ SPEED vs ILine

Motor Ratings:

(1) K55HXHLNS-2510 ID: 1

Wiring Diagram



Dayton[®]

DIRECT DRIVE BLOWER MOTOR

[BAR CODE]

Part No 3LU92BG

HP: 1

VOLTS: 208-230

AMPS: 5.8 - 6.8

RPM: 1075/4SPD

DUTY: CONT

SF: 1.0

KVA CODE:

ENCL: OAO

THERMALLY PROTECTED: AUTO

MFG. NO. [] [] PROT. CODE: [7A000]

AVG. F.L. 68.3
EFF.

MTR REF: K55HXLNS-2510

PH: 1

HZ: 60

FR: 48YZ

INS CL: B

AMB: 40 °C

SFA: 5.8 - 6.8

Disconnect Power Before Making Any
Electrical Connections or Changes

CONNECTIONS

COM	PURPLE
HI	BLACK
MED-HI	WHITE
MED-LO	BLUE
LO	RED
CAP	BROWN
CAP	BROWN/WHITE

ROTATION IS CCW LEAD END
TO REVERSE ROTATION
INTERCHANGE ORG AND YEL LEADS

E37403



258501

20 MFD 370 VAC
CAP. REQD.

Mfd for Dayton Electric Mfg. Co., Lake Forest, IL 60045 USA [] [] [] [] [] []