

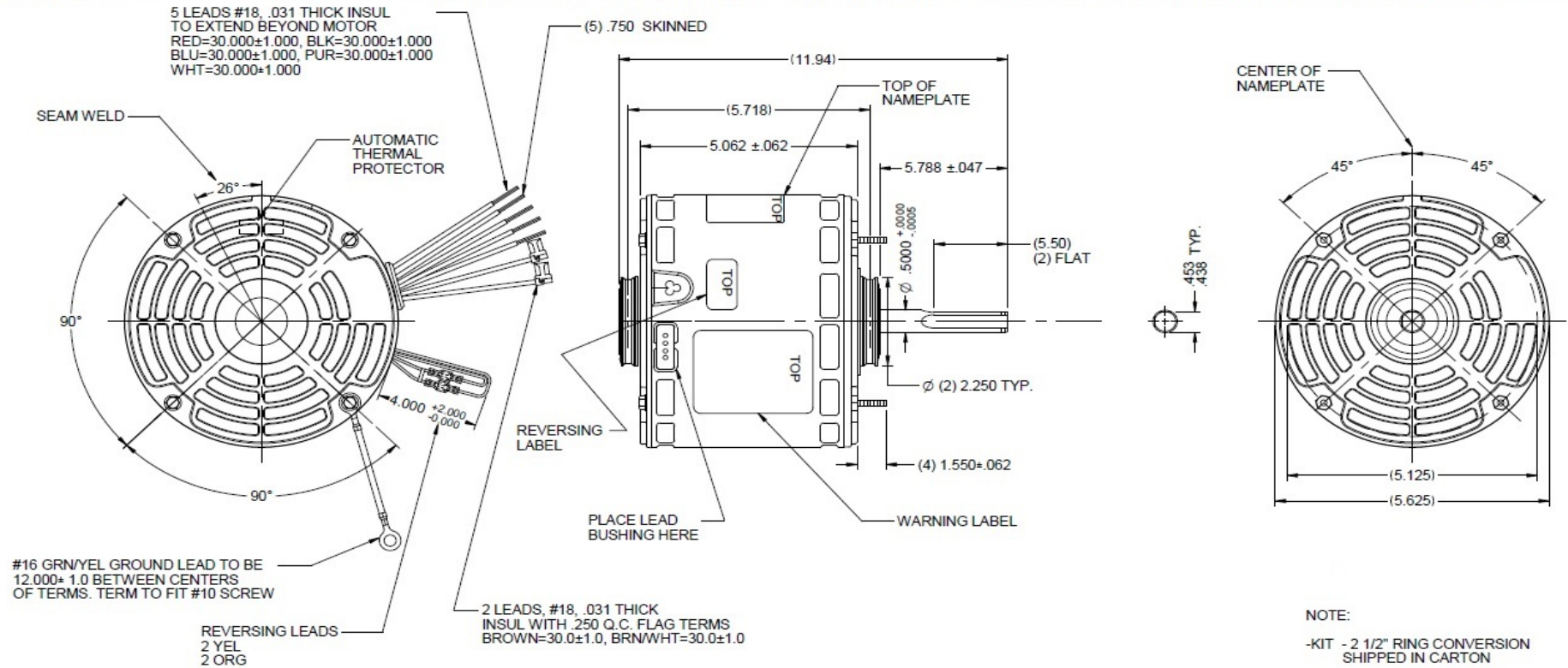
Dimensional Drawing



3LU80BG

REV.
-

MODEL	REF	CUSTOMER	HP	VOLTS	AMPS	HZ	RPM	ROTATION	CUSTOMER PN	DESCRIPTION / REMARKS
K55HXLNV-2514		GRAINGER	1/3	208-230	3.14	60	1075 / 4 SPD	CCW. LEAD END REV	3LU80BG	DIRECT DRIVE BLOWER MOTOR, 48YZ, OPAO, SAB.



DRAWING NO.	PAGE 1 of 1	REV.
	3LU80BG	-

Performance Data



3LU80BG	REV.	-										
----------------	------	---	--	--	--	--	--	--	--	--	--	--

Line Voltage	208	230	VAC
1ST SPEED			
LRT	7.19	9.47	OZ-FT
LRA	5.41	6.083	AMP
PUT	7.19	9.47	OZ-FT
BDT	35.49	44.14	OZ-FT
FLT	30.232	36.474	OZ-FT
FLA	2.607	2.853	AMP
FLW	465.7	561.6	WATT
FL RPM	1072	1078	RPM
2ND SPEED			
LRT	2.533	5.86	OZ-FT
LRA	3.159	3.54	AMP
PUT	2.533	5.32	OZ-FT
BDT	20.62	25.81	OZ-FT
FLT	16.567	20.379	OZ-FT
FLA	1.444	1.594	AMP
FLW	254.2	311.7	WATT
FL RPM	1085	1085	RPM
3RD SPEED			
LRT	1.325	2.573	OZ-FT
LRA	2.249	2.533	AMP
PUT	1.325	2.316	OZ-FT
BDT	14.736	18.046	OZ-FT
FLT	11.54	13.959	OZ-FT
FLA	1.03	1.099	AMP
FLW	179.1	212	WATT
FL RPM	1083	1091	RPM

Line Voltage	208	230	VAC
4TH SPEED			
LRT	0.824	1.576	OZ-FT
LRA	2.01	2.264	AMP
PUT	0.824	1.576	OZ-FT
BDT	13.004	16.285	OZ-FT
FLT	9.947	12.071	OZ-FT
FLA	0.895	0.946	AMP
FLW	155	182.2	WATT
FL RPM	1088	1097	RPM

DRAWING NO.	PAGE 1 of 4	REV.
3LU80BG		-



3LU80BG

REV.

-

Dayton Manufacturing Company

Motor Description

Model: K55HXHXLNV-2514
 Motor ID: 1
 Poles: 6
 Volts: 208-230
 Frequency: 60
 HP: 1/3
 Speed: 1075
 Phase: 1
 Protector: 7AM033-A5

Test Conditions

Test Type: Start
 Test Number: 15
 Poles: 6
 Volts: 208
 Hz: 60
 Rotation:
 Special Cond: M1
 Speed Conn: M1
 TestBoard: CMD InLine Three Phase #2 Fixture #1
 Run Cap: 6
 Start Cap: 0µfd
 Environment: 22.9 Deg C 49 % RH 958 hPa
 Tested: 7/11/2016 5:36:34 PM
 Tested By: Bribiesca, Griselda
 Gear Ratio: 1:1
 Bearing Friction: -0.64 Oz-Ft
 Windage Torque: -0.96 Oz-Ft

Special Points	Vline (V)	Vaux (V)	Vcap(V)	Iline (A)	Watts	RPM	Tq(Oz-ft)	HP	Eff(%)	PF(%)
PUT OZ-FT	208.0	66.6	245.4	5.410	802.3	25	7.19	0.002	0.2	71.3
	208.0	66.6	245.4	5.410	802.3	25	7.19	0.002	0.2	71.3
	208.0	68.5	239.5	5.382	799.0	133	9.71	0.015	1.4	71.4
	208.0	72.1	235.8	5.339	795.7	230	11.56	0.032	3.0	71.6
	208.0	77.2	232.9	5.278	793.2	326	13.48	0.052	4.9	72.2
	208.0	83.2	229.9	5.202	789.2	412	15.92	0.078	7.4	72.9
	208.0	91.3	227.5	5.097	783.0	496	18.64	0.110	10.5	73.9
	208.0	100.3	225.8	4.979	775.0	572	21.83	0.149	14.3	74.8
	208.0	110.5	225.3	4.840	764.0	642	24.40	0.186	18.2	75.9
	208.0	121.7	225.9	4.684	750.3	707	26.61	0.224	22.3	77.0
	208.0	134.0	228.0	4.506	733.2	766	28.90	0.264	26.8	78.2
	208.0	147.0	231.7	4.312	712.6	820	30.92	0.302	31.6	79.4
	208.0	162.0	238.1	4.085	685.8	871	32.73	0.339	36.9	80.7
	208.0	176.7	246.0	3.862	658.1	916	33.48	0.365	41.4	81.9
	208.0	193.1	256.6	3.601	622.6	957	34.29	0.391	46.8	83.1
	208.0	209.6	269.3	3.334	583.0	993	33.87	0.401	51.3	84.1
	208.0	226.1	283.2	3.062	541.2	1026	32.97	0.403	55.5	85.0
	208.0	242.1	298.1	2.792	497.2	1056	31.21	0.392	58.9	85.6
	208.0	253.9	310.3	2.590	461.0	1075	28.88	0.370	59.8	85.6
	208.0	272.5	329.9	2.258	401.8	1104	25.62	0.337	62.5	85.6
	208.0	286.9	346.7	1.996	350.0	1123	21.76	0.291	62.0	84.3
	208.0	298.1	359.9	1.790	308.6	1139	17.83	0.242	58.5	82.9
	208.0	304.4	367.7	1.674	284.2	1147	15.95	0.218	57.2	81.6
	208.0	315.9	385.0	1.427	228.1	1166	10.84	0.150	49.2	76.8
	208.0	323.1	398.2	1.285	195.9	1175	7.70	0.108	41.0	73.3
	208.0	328.6	409.0	1.193	171.6	1183	4.78	0.067	29.3	69.2
	208.0	332.6	416.7	1.132	148.8	1188	2.27	0.032	16.1	63.2
	208.0	334.8	421.0	1.104	133.1	1193	0.50	0.007	4.0	58.0
	208.0	335.5	422.2	1.096	128.4	1194	0.00	0.000	0.0	56.3

DRAWING NO. PAGE 1 of 32 REV.
 3LU80BG -

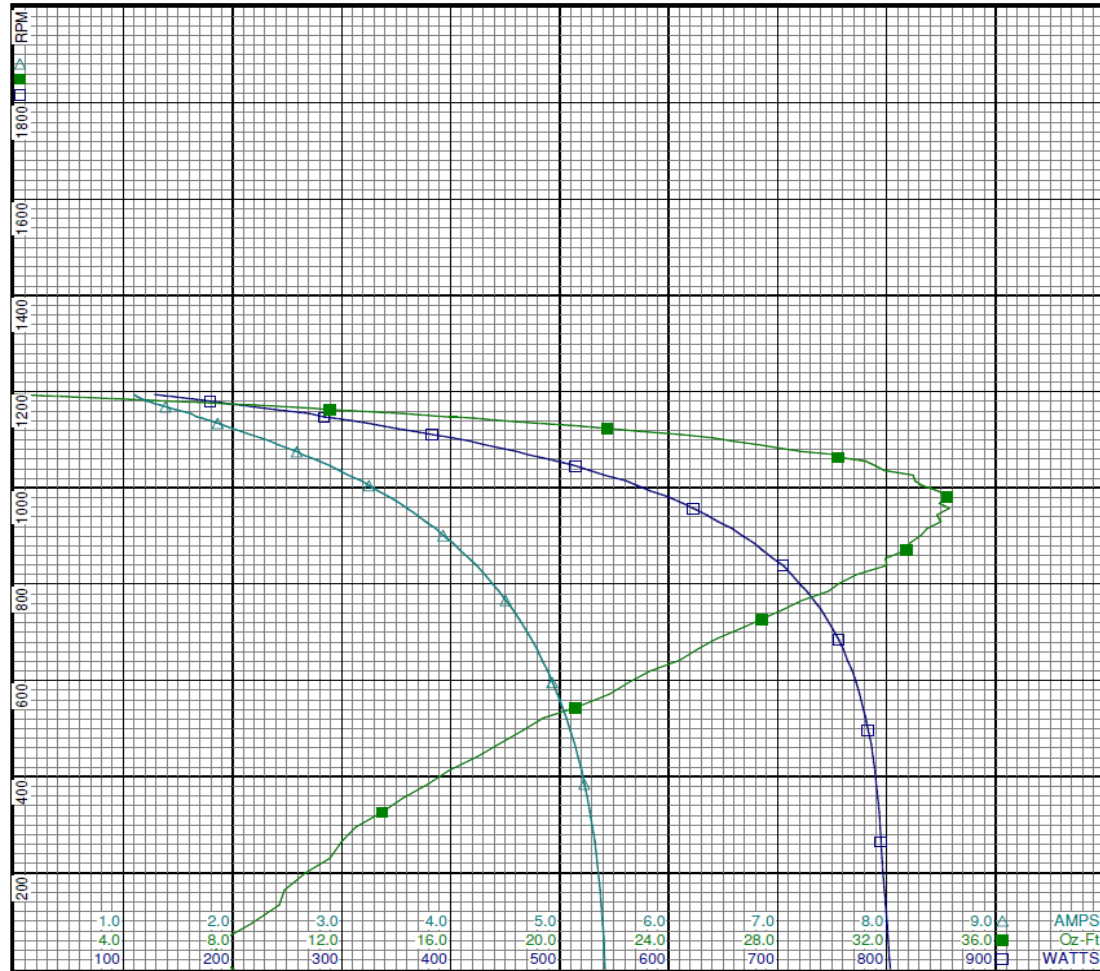
Performance Data



3LU80BG

REV.

-



Curve Descriptions:

Motor(1) Test 15 Start 208V 60 Hz 6P
M1 M1 6ufd Run

- SPEED vs WATTS
- SPEED vs TORQUE
- △ SPEED vs ILine

Motor Ratings:

(1) K55HXHXLNV-2514 ID: 1

DRAWING NO. PAGE 2 of 32
3LU80BG

REV.
-

Dayton Electric Mfg. Co. Lake Forest, IL 60045 USA

3LU80BG

REV.

-

Dayton Manufacturing Company

Motor Description

Model: K55HXHXLNV-2514
 Motor ID: 1
 Poles: 6
 Volts: 208-230
 Frequency: 60
 HP: 1/3
 Speed: 1075
 Phase: 1
 Protector: 7AM033-A5

Test Conditions

Test Type: Run
 Test Number: 1
 Poles: 6
 Volts: 208
 Hz: 60
 Rotation: REV
 Special Cond: M1 - HIGH SPEED
 Speed Conn:
 TestBoard: CMD InLine Three Phase #2 Fixture #1
 Run Cap: 6
 Start Cap: 0µfd
 Environment: 22.9 Deg C 49 % RH 958 hPa
 Tested: 7/11/2016 5:38:06 PM
 Tested By: Bribiesca, Griselda
 Gear Ratio: 1:1
 Bearing Friction: -0.63 Oz-Ft
 Windage Torque: -1.16 Oz-Ft

Special Points	Vline (V)	Vaux (V)	Vcap (V)	Iline (A)	Watts	RPM	Tq(Oz-ft)	HP	Eff (%)	PF (%)
	208.0	335.5	422.1	1.096	128.5	1193	0.00	0.000	0.0	56.3
	208.0	333.9	418.9	1.116	141.0	1189	1.46	0.021	11.0	60.7
	208.0	330.3	411.8	1.170	164.2	1183	4.02	0.057	25.7	67.4
	208.0	324.6	401.3	1.253	187.8	1176	6.55	0.092	36.4	72.1
	208.0	316.9	386.9	1.399	220.9	1166	10.60	0.147	49.7	75.9
	208.0	310.2	375.6	1.559	257.6	1154	13.92	0.191	55.4	79.4
	208.0	298.8	360.5	1.772	304.7	1139	18.18	0.247	60.4	82.6
	208.0	288.0	347.3	1.981	347.5	1123	21.99	0.294	63.1	84.4
	208.0	274.4	331.5	2.234	397.2	1103	25.55	0.336	63.0	85.5
25.854 OZ-FT	208.0	273.2	330.1	2.256	401.5	1102	25.85	0.339	63.0	85.6
	208.0	261.3	317.2	2.464	439.5	1084	28.82	0.372	63.2	85.8
30.232 OZ-FT	208.0	253.5	308.8	2.607	465.7	1072	30.23	0.386	61.8	85.9
	208.0	243.2	298.2	2.794	498.3	1055	31.71	0.398	59.6	85.7
33.477 OZ-FT	208.0	227.1	283.1	3.066	543.0	1027	33.48	0.409	56.2	85.1
	208.0	226.7	282.7	3.074	544.3	1026	33.49	0.409	56.1	85.1
BDT OZ-FT	208.0	210.8	269.0	3.340	586.0	994	34.57	0.409	52.1	84.3
	208.0	194.2	256.3	3.611	625.6	958	35.13	0.401	47.8	83.3
	208.0	177.8	245.4	3.877	662.4	917	34.71	0.379	42.7	82.1
	208.0	162.3	237.3	4.111	691.1	871	33.54	0.348	37.5	80.8
	208.0	147.7	231.3	4.325	715.2	820	32.61	0.318	33.2	79.5
	208.0	135.1	227.7	4.509	735.0	769	30.68	0.281	28.5	78.4
	208.0	122.6	225.7	4.686	751.9	709	28.04	0.237	23.5	77.1
	208.0	111.5	225.1	4.834	764.2	645	25.47	0.195	19.1	76.0
	208.0	101.6	225.9	4.964	774.8	573	23.21	0.158	15.2	75.0
	208.0	92.2	227.5	5.083	783.2	497	20.51	0.121	11.6	74.1
	208.0	84.6	229.7	5.172	788.5	418	17.39	0.087	8.2	73.3
	208.0	78.0	232.0	5.246	792.5	331	15.29	0.060	5.7	72.6
	208.0	73.0	235.6	5.297	795.1	239	13.31	0.038	3.6	72.2
	208.0	69.3	238.8	5.330	797.8	137	11.32	0.018	1.7	72.0

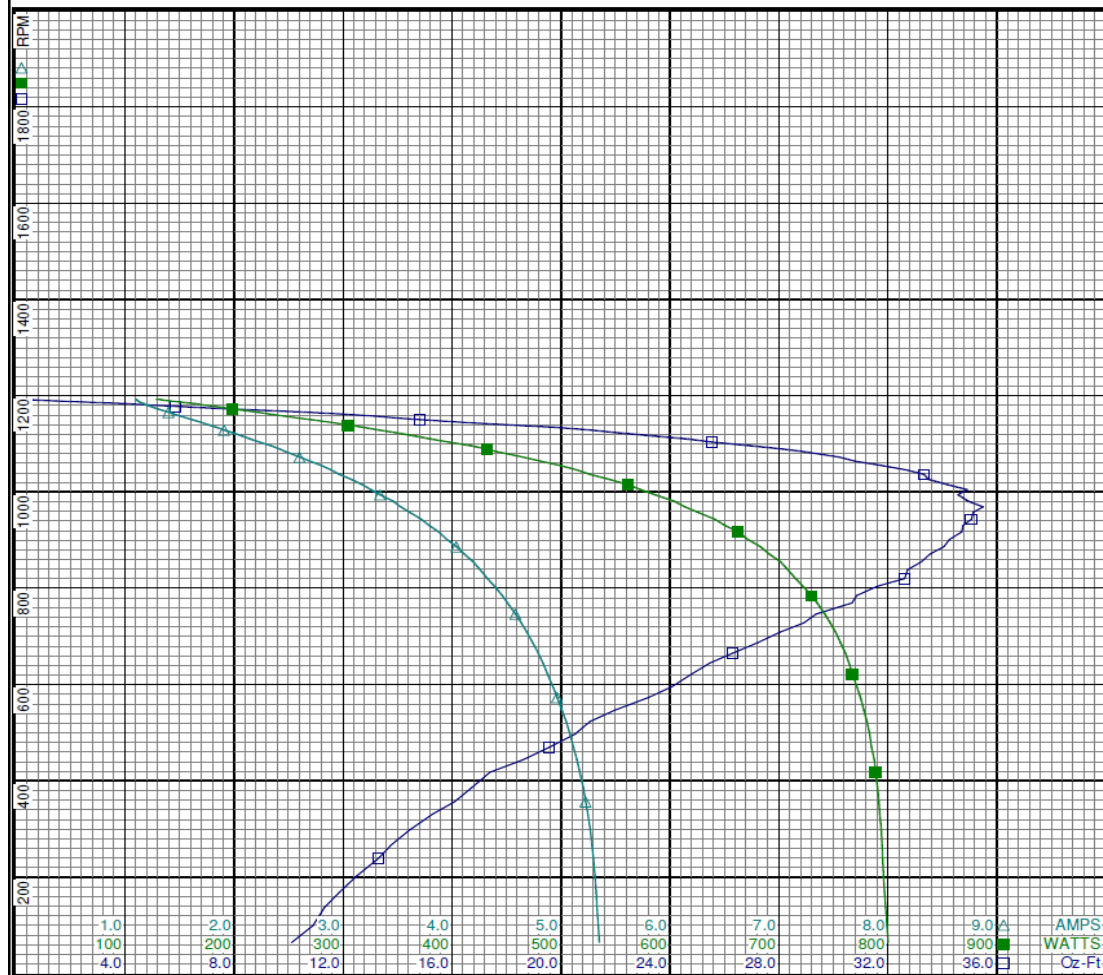
Performance Data



3LU80BG

REV.

-



Curve Descriptions:
 Motor(1) Test 1 Run 208V 60 Hz 6P
 M1 - HIGH SPEED REV 6ufd Run
 □ SPEED vs TORQUE
 ■ SPEED vs WATTS
 △ SPEED vs ILine

Motor Ratings:
 (1) K55HXHXLNV-2514 ID: 1

1.0	2.0	3.0	4.0	5.0	6.0	7.0	8.0	9.0	AMPS
100	200	300	400	500	600	700	800	900	WATTS
4.0	8.0	12.0	16.0	20.0	24.0	28.0	32.0	36.0	Oz-Ft

DRAWING NO. PAGE 4 of 32 REV.
3LU80BG -

Dayton Electric Mfg. Co. Lake Forest, IL 60045 USA



3LU80BG

REV.

-

Dayton Manufacturing Company

Motor Description

Model: K55HXHXLNV-2514
 Motor ID: 1
 Poles: 6
 Volts: 208-230
 Frequency: 60
 HP: 1/3
 Speed: 1075
 Phase: 1
 Protector: 7AM033-A5

Test Conditions

Test Type: Start
 Test Number: 16
 Poles: 6
 Volts: 208
 Hz: 60
 Rotation:
 Special Cond: M2
 Speed Conn: M2
 TestBoard: CMD InLine Three Phase #2 Fixture #1
 Run Cap: 6
 Start Cap: 0µfd
 Environment: 24.1 Deg C 67 % RH 963 hPa
 Tested: 7/12/2016 9:50:11 AM
 Tested By: Navarro, Susana
 Gear Ratio: 1:1
 Bearing Friction: -0.41 Oz-Ft
 Windage Torque: -1.08 Oz-Ft

Special Points PUT OZ-FT	Vline (V)	Vaux (V)	Vcap(V)	Iline (A)	Watts	RPM	Tq(Oz-ft)	HP	Eff (%)	PF (%)
	208.0	52.6	187.7	3.159	443.7	16	2.533	0.000	0.1	67.5
	208.0	52.6	187.7	3.159	443.7	16	2.533	0.000	0.1	67.5
	208.0	53.5	180.5	3.143	442.6	144	6.130	0.011	1.8	67.7
	208.0	55.6	177.9	3.116	440.4	229	5.622	0.015	2.6	68.0
	208.0	58.9	174.1	3.076	438.5	338	8.253	0.033	5.6	68.5
	208.0	62.8	172.1	3.042	437.2	413	8.748	0.043	7.3	69.1
	208.0	68.5	170.2	2.987	435.6	494	9.639	0.057	9.7	70.1
	208.0	75.5	168.7	2.923	433.6	571	12.086	0.082	14.1	71.3
	208.0	82.9	167.8	2.847	429.5	639	13.597	0.103	18.0	72.5
	208.0	91.6	167.8	2.753	422.8	706	14.998	0.126	22.2	73.8
	208.0	100.5	168.8	2.652	414.5	764	16.322	0.148	26.7	75.1
	208.0	110.9	171.4	2.537	404.4	820	17.337	0.169	31.2	76.6
	208.0	122.0	175.8	2.404	390.4	870	18.546	0.192	36.7	78.1
	208.0	133.5	181.7	2.270	375.5	915	19.125	0.208	41.4	79.5
	208.0	146.1	189.8	2.115	355.9	957	19.681	0.224	47.0	80.9
	208.0	158.7	199.5	1.959	334.5	993	19.321	0.228	50.9	82.1
	208.0	171.4	210.5	1.795	310.3	1026	18.886	0.231	55.4	83.1
	208.0	183.7	222.2	1.633	285.4	1055	17.872	0.225	58.7	84.0
	208.0	196.1	234.9	1.470	258.2	1081	16.175	0.208	60.1	84.4
	208.0	208.2	248.2	1.304	229.1	1104	14.475	0.190	62.0	84.4
	208.0	218.9	260.8	1.154	201.1	1123	12.237	0.164	60.7	83.8
	208.0	228.1	271.8	1.029	177.6	1140	9.921	0.135	56.5	83.0
	208.0	235.7	282.4	0.905	151.6	1154	8.302	0.114	56.1	80.5
	208.0	243.8	294.4	0.788	127.7	1166	6.124	0.085	49.6	77.9
	208.0	251.9	308.9	0.681	107.3	1176	4.100	0.057	39.9	75.7
	208.0	257.7	318.8	0.628	96.2	1183	2.669	0.038	29.2	73.6
	208.0	262.6	326.8	0.582	84.0	1189	0.959	0.014	12.1	69.4
	208.0	264.5	330.2	0.558	76.9	1193	0.000	0.000	0.0	66.3

DRAWING NO. PAGE 3 of 32 REV.
3LU80BG -

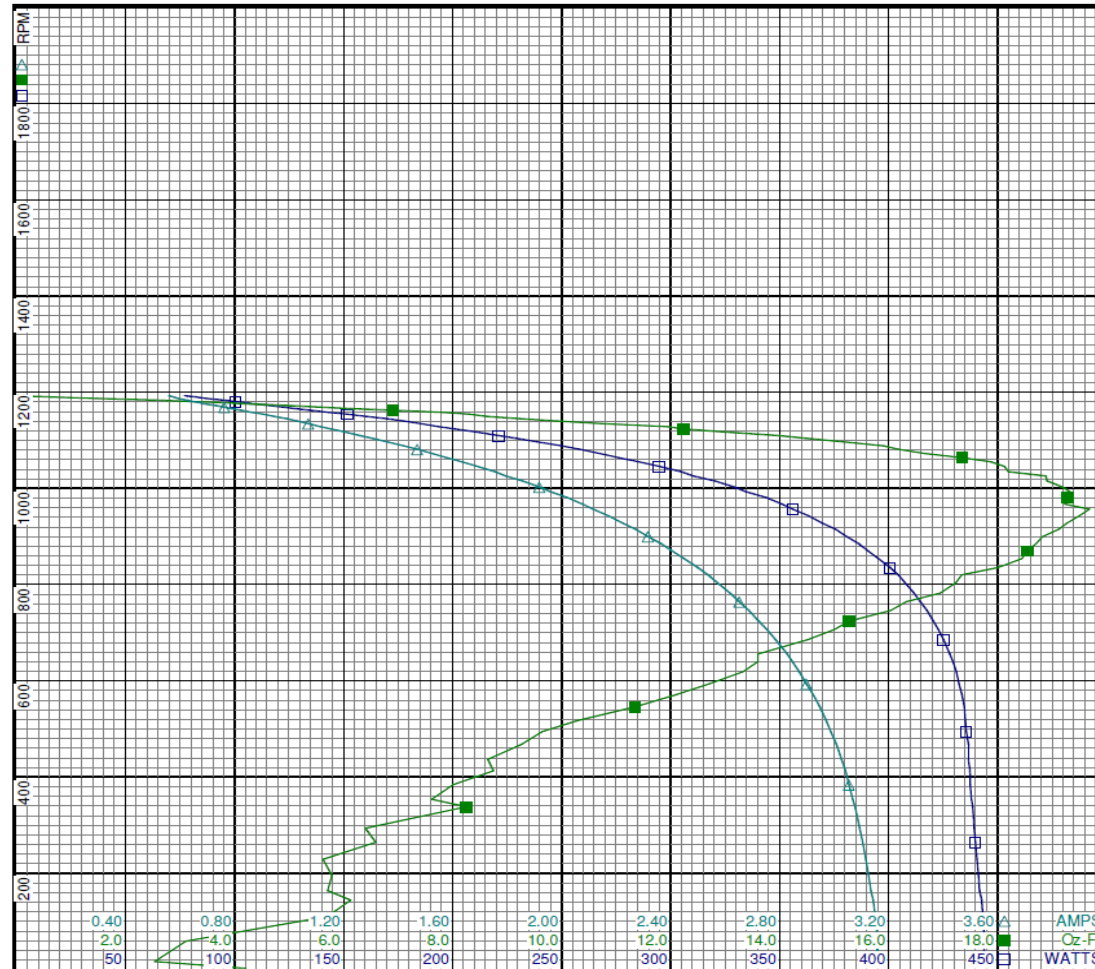
Performance Data



3LU80BG

REV.

-



Curve Descriptions:

Motor(1) Test 16 Start 208V 60 Hz 6P
M2 M2 6ufd Run

- SPEED vs WATTS
- SPEED vs TORQUE
- △ SPEED vs ILine

Motor Ratings:

(1) K55HXHXLNV-2514 ID: 1

DRAWING NO. PAGE 6 of 32
3LU80BG

REV.
-

Dayton Electric Mfg. Co. Lake Forest, IL 60045 USA

Performance Data



3LU80BG

REV.

-

Dayton Manufacturing Company

Motor Description

Model: K55HXHXLNV-2514
 Motor ID: 1
 Poles: 6
 Volts: 208-230
 Frequency: 60
 HP: 1/3
 Speed: 1075
 Phase: 1
 Protector: 7AM033-A5

Test Conditions

Test Type: Run
 Test Number: 2
 Poles: 6
 Volts: 208
 Hz: 60
 Rotation: REV
 Special Cond: M2 - MEDIUM-HIGH SPEED
 Speed Conn:
 TestBoard: CMD InLine Three Phase #2 Fixture #1
 Run Cap: 6
 Start Cap: 0µfd
 Environment: 24.1 Deg C 67 % RH 963 hPa
 Tested: 7/12/2016 9:45:31 AM
 Tested By: Navarro, Susana
 Gear Ratio: 1:1
 Bearing Friction: -0.41 Oz-Ft
 Windage Torque: -1.07 Oz-Ft

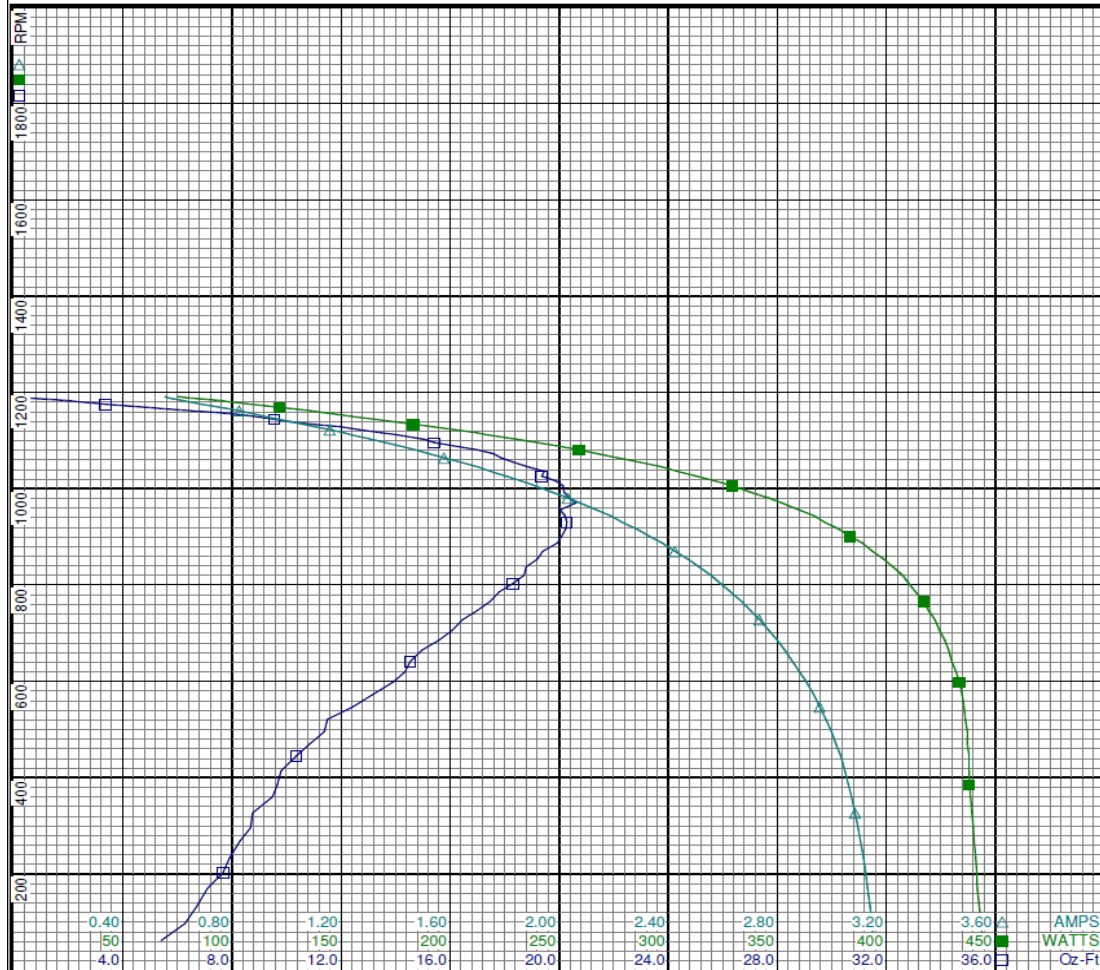
Special Points	Vline (V)	Vaux (V)	Vcap(V)	Iline (A)	Watts	RPM	Tq(Oz-ft)	HP	Eff (%)	PF (%)
	208.0	264.6	330.6	0.555	75.2	1191	0.00	0.000	0.0	65.2
	208.0	262.2	326.4	0.582	84.6	1187	0.92	0.013	11.5	69.9
	208.0	256.5	316.7	0.640	99.0	1180	2.41	0.034	25.5	74.4
	208.0	248.7	302.5	0.725	115.6	1172	4.13	0.058	37.2	76.7
	208.0	241.0	289.9	0.827	136.0	1162	6.50	0.090	49.3	79.1
	208.0	234.4	280.3	0.930	156.8	1149	8.97	0.123	58.3	81.1
	208.0	225.6	268.8	1.060	183.3	1134	10.92	0.147	60.0	83.1
	208.0	215.1	256.0	1.211	212.2	1116	13.48	0.179	63.0	84.3
14.16 OZ-FT	208.0	212.4	253.0	1.245	218.5	1111	14.16	0.187	63.9	84.3
	208.0	204.4	243.6	1.362	239.9	1096	15.41	0.201	62.5	84.7
16.567 OZ-FT	208.0	198.4	237.0	1.444	254.2	1085	16.57	0.214	62.8	84.7
	208.0	192.8	230.9	1.521	267.4	1073	17.59	0.225	62.7	84.5
18.408 OZ-FT	208.0	183.4	221.3	1.649	288.6	1053	18.41	0.231	59.7	84.1
	208.0	179.7	217.5	1.700	296.8	1046	18.84	0.234	58.9	84.0
	208.0	167.5	206.2	1.861	321.6	1016	19.88	0.240	55.8	83.1
	208.0	154.1	195.2	2.032	345.9	981	20.37	0.238	51.3	81.8
BDT OZ-FT	208.0	150.6	192.4	2.076	352.1	970	20.62	0.238	50.5	81.5
	208.0	141.6	186.0	2.191	367.1	943	20.22	0.227	46.1	80.6
	208.0	129.6	179.0	2.331	383.4	900	20.08	0.215	41.9	79.1
	208.0	117.8	173.4	2.473	398.8	854	19.19	0.195	36.5	77.6
	208.0	107.2	169.9	2.592	410.3	803	18.30	0.175	31.8	76.1
	208.0	97.3	168.0	2.702	419.4	746	16.98	0.151	26.8	74.6
	208.0	88.5	167.4	2.800	426.8	685	15.59	0.127	22.2	73.3
	208.0	80.6	167.8	2.882	431.9	619	14.33	0.106	18.2	72.1
	208.0	73.2	169.1	2.955	435.5	547	12.42	0.081	13.9	70.8
	208.0	66.4	170.5	3.015	437.1	469	10.84	0.061	10.3	69.7
	208.0	61.1	172.6	3.061	438.1	385	9.66	0.044	7.5	68.8
	208.0	57.7	175.6	3.096	439.8	296	8.68	0.031	5.2	68.3
	208.0	55.2	178.7	3.124	441.4	202	7.67	0.018	3.1	67.9
	208.0	53.5	183.2	3.147	443.4	97	6.28	0.007	1.2	67.7

DRAWING NO. PAGE 7 of 32 REV.
 3LU80BG -

3LU80BG

REV.

-



Curve Descriptions:

Motor(1) Test 2 Run 208V 60 Hz 6P
M2 - MEDIUM-HIGH SPEED REV 6ufd Run

- SPEED vs TORQUE
- SPEED vs WATTS
- △ SPEED vs ILine

Motor Ratings:

(1) K55HXHXLNV-2514 ID: 1

DRAWING NO.	PAGE 8 of 32	REV.
	3LU80BG	-



3LU80BG

REV.

-

Dayton Manufacturing Company

Motor Description

Model: K55HXHXLNV-2514
 Motor ID: 1
 Poles: 6
 Volts: 208-230
 Frequency: 60
 HP: 1/3
 Speed: 1075
 Phase: 1
 Protector: 7AM033-A5

Test Conditions

Test Type: Start
 Test Number: 17
 Poles: 6
 Volts: 208
 Hz: 60
 Rotation:
 Special Cond: M3
 Speed Conn: M3
 TestBoard: CMD InLine Three Phase #2 Fixture #1
 Run Cap: 6
 Start Cap: 0µfd
 Environment: 23.9 Deg C 55 % RH 964 hPa
 Tested: 7/12/2016 10:39:13 AM
 Tested By: Navarro, Susana
 Gear Ratio: 1:1
 Bearing Friction: -0.44 Oz-Ft
 Windage Torque: -1.05 Oz-Ft

Special Points PUT OZ-FT	Vline (V)	Vaux (V)	Vcap(V)	Iline (A)	Watts	RPM	Tq(Oz-ft)	HP	Eff (%)	PF (%)
	208.0	45.8	158.5	2.249	304.9	17	1.325	0.000	0.1	65.2
	208.0	45.8	158.5	2.249	304.9	17	1.325	0.000	0.1	65.2
	208.0	46.1	153.4	2.237	303.3	124	2.271	0.003	0.8	65.2
	208.0	47.6	149.2	2.212	301.5	231	4.420	0.012	3.0	65.5
	208.0	49.3	146.6	2.186	299.7	318	4.624	0.018	4.4	65.9
	208.0	52.4	143.4	2.157	297.9	416	5.828	0.029	7.2	66.4
	208.0	58.0	142.5	2.125	299.5	506	7.348	0.044	11.0	67.8
	208.0	62.5	141.6	2.086	298.1	568	6.954	0.047	11.8	68.7
	208.0	69.3	140.6	2.029	296.2	641	8.373	0.064	16.1	70.2
	208.0	76.7	140.3	1.964	293.1	708	10.165	0.086	21.8	71.7
	208.0	84.5	141.1	1.886	287.1	767	11.693	0.107	27.8	73.2
	208.0	92.9	143.2	1.803	279.6	820	12.112	0.118	31.5	74.6
	208.0	101.5	146.1	1.720	273.0	870	12.456	0.129	35.2	76.3
	208.0	110.6	150.6	1.627	263.0	913	13.363	0.145	41.2	77.7
	208.0	121.4	157.4	1.514	249.9	955	13.399	0.152	45.5	79.3
	208.0	132.6	166.0	1.395	233.7	992	13.624	0.161	51.4	80.6
	208.0	143.0	174.9	1.281	218.0	1025	13.113	0.160	54.7	81.8
	208.0	153.2	184.4	1.169	201.6	1054	12.279	0.154	57.0	82.9
	208.0	163.7	195.2	1.050	182.3	1081	11.094	0.143	58.4	83.4
	208.0	174.5	207.3	0.925	160.4	1103	9.840	0.129	60.1	83.4
	208.0	182.4	216.4	0.829	143.7	1123	8.236	0.110	57.2	83.3
	208.0	190.9	227.2	0.721	122.7	1140	7.353	0.100	60.7	81.8
	208.0	199.7	239.3	0.609	100.4	1156	5.365	0.074	54.9	79.2
	208.0	204.8	246.7	0.555	89.6	1165	3.950	0.055	45.6	77.7
	208.0	210.9	257.4	0.488	77.2	1175	2.714	0.038	36.7	76.1
	208.0	215.8	266.1	0.447	70.3	1182	1.140	0.016	17.0	75.6
	208.0	221.5	276.1	0.400	60.4	1189	0.296	0.004	5.2	72.6
	208.0	222.4	277.5	0.393	58.8	1190	0.097	0.001	1.7	71.9

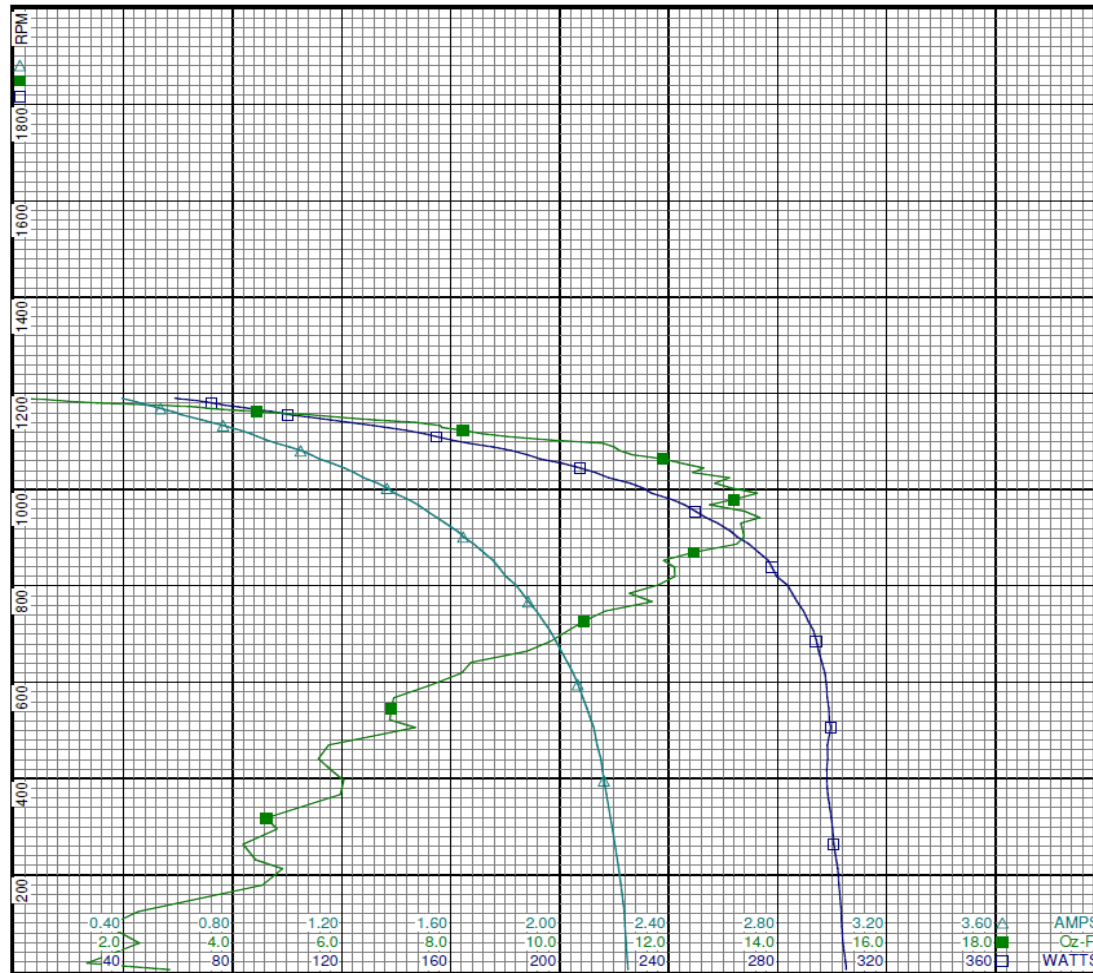
DRAWING NO. PAGE 9 of 32
3LU80BG

REV.
 -

3LU80BG

REV.

-



DRAWING NO.	PAGE 10 of 32	REV.
	3LU80BG	-

Performance Data



3LU80BG

REV.

-

Dayton Manufacturing Company

Motor Description

Model: K55HXHLNV-2514
 Motor ID: 1
 Poles: 6
 Volts: 208-230
 Frequency: 60
 HP: 1/3
 Speed: 1075
 Phase: 1
 Protector: 7AM033-A5

Test Conditions

Test Type: Run
 Test Number: 13
 Poles: 6
 Volts: 208
 Hz: 60
 Rotation: REV
 Special Cond: M3 - MEDIUM-LOW SPEED
 Speed Conn:
 TestBoard: CMD InLine Three Phase #2 Fixture #1
 Run Cap: 6
 Start Cap: 0µfd
 Environment: 23.9 Deg C 55 % RH 964 hPa
 Tested: 7/12/2016 10:37:52 AM
 Tested By: Navarro, Susana
 Gear Ratio: 1:1
 Bearing Friction: -0.44 Oz-Ft
 Windage Torque: -1.05 Oz-Ft

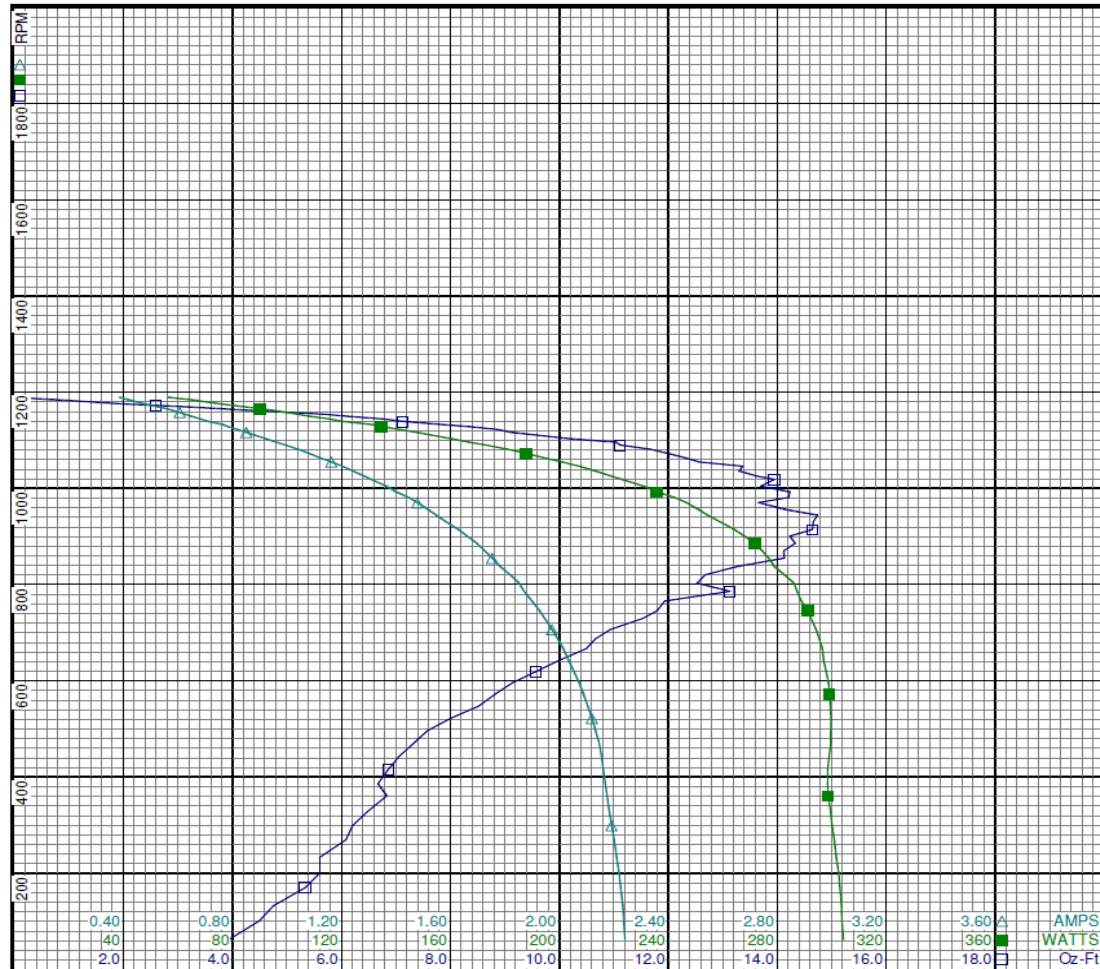
Special Points	Vline (V)	Vaux (V)	Vcap(V)	Iline (A)	Watts	RPM	Tq(Oz-ft)	HP	Eff (%)	PF (%)
	208.0	223.5	279.2	0.385	56.2	1189	0.000	0.000	0.0	70.2
	208.0	222.0	276.7	0.398	60.0	1187	0.341	0.005	6.0	72.4
	208.0	217.9	270.1	0.428	66.7	1183	0.947	0.013	14.9	74.9
	208.0	213.3	262.3	0.460	72.7	1178	1.635	0.023	23.5	75.9
	208.0	208.5	253.7	0.503	80.3	1172	2.602	0.036	33.8	76.7
	208.0	203.9	245.6	0.556	90.2	1166	3.746	0.052	43.0	78.0
	208.0	199.7	239.4	0.606	100.1	1158	5.098	0.070	52.4	79.4
	208.0	196.5	234.8	0.648	108.3	1150	6.108	0.084	57.6	80.3
	208.0	191.7	228.4	0.709	120.2	1139	7.125	0.097	59.9	81.5
	208.0	186.2	221.1	0.782	134.7	1129	8.339	0.112	62.1	82.8
	208.0	180.6	214.2	0.851	147.7	1116	9.112	0.121	61.2	83.4
9.841 OZ-FT	208.0	176.5	209.5	0.898	156.1	1107	9.841	0.130	62.0	83.5
	208.0	174.2	206.9	0.924	160.6	1103	10.216	0.134	62.3	83.6
	208.0	168.6	200.4	0.994	172.8	1090	11.114	0.144	62.2	83.6
11.54 OZ-FT	208.0	165.7	197.2	1.030	179.1	1083	11.540	0.149	62.0	83.6
	208.0	161.2	192.3	1.081	187.8	1073	11.992	0.153	60.8	83.5
	208.0	154.0	184.9	1.164	201.0	1055	12.565	0.158	58.6	83.0
12.838 OZ-FT	208.0	152.8	183.8	1.177	203.1	1052	12.838	0.161	59.0	83.0
	208.0	147.1	178.2	1.242	213.1	1036	13.296	0.164	57.4	82.5
	208.0	140.9	172.5	1.310	223.0	1018	13.946	0.169	56.6	81.9
	208.0	133.0	165.7	1.400	235.7	993	14.230	0.168	53.2	80.9
	208.0	125.9	159.9	1.479	246.6	970	13.655	0.158	47.7	80.2
BDT OZ-FT	208.0	119.1	155.5	1.548	254.4	944	14.736	0.166	48.6	79.0
	208.0	119.1	155.5	1.548	254.4	944	14.736	0.166	48.6	79.0
	208.0	111.4	150.6	1.629	264.2	914	14.643	0.159	45.0	78.0
	208.0	104.9	147.1	1.696	271.8	886	14.327	0.151	41.5	77.0
	208.0	99.0	144.7	1.753	276.8	855	14.130	0.144	38.8	75.9
	208.0	92.5	142.6	1.819	282.5	820	12.677	0.124	32.7	74.7
	208.0	87.2	141.2	1.870	287.2	786	13.128	0.123	31.9	73.8
	208.0	81.3	140.4	1.927	291.3	746	11.793	0.105	26.8	72.7
	208.0	76.4	140.1	1.973	294.2	706	10.932	0.092	23.3	71.7
	208.0	71.9	140.2	2.014	296.5	667	10.494	0.083	21.0	70.8
	208.0	67.1	140.5	2.053	297.9	619	9.570	0.071	17.7	69.8
	208.0	63.1	141.4	2.088	299.2	573	8.834	0.060	15.0	68.9
	208.0	59.1	142.3	2.120	299.8	522	8.004	0.050	12.4	68.0
	208.0	55.6	143.2	2.145	299.7	471	7.337	0.041	10.2	67.1
	208.0	52.5	143.6	2.161	298.5	416	6.862	0.034	8.5	66.4
	208.0	50.3	144.7	2.175	298.7	361	6.831	0.029	7.3	66.0
	208.0	48.9	146.8	2.192	300.1	299	6.203	0.022	5.8	65.8
	208.0	47.6	149.2	2.210	301.6	233	5.398	0.016	5.3	65.6
	208.0	46.7	151.1	2.225	303.0	170	5.334	0.011	2.7	65.5
	208.0	46.1	153.9	2.236	303.7	101	4.490	0.005	1.3	65.3

DRAWING NO. PAGE 11 of 32 REV.
3LU80BG -

3LU80BG

REV.

-



Curve Descriptions:

Motor(1) Test 13 Run 208V 60 Hz 6P
M3 - MEDIUM-LOW SPEED REV 6ufd Run

- SPEED vs TORQUE
- SPEED vs WATTS
- △ SPEED vs ILine

Motor Ratings:

(1) K55HXHXLNV-2514 ID: 1



3LU80BG

REV.

-

Dayton Manufacturing Company

Motor Description

Model: K55HXHXLNV-2514
 Motor ID: 1
 Poles: 6
 Volts: 208-230
 Frequency: 60
 HP: 1/3
 Speed: 1075
 Phase: 1
 Protector: 7AM033-A5

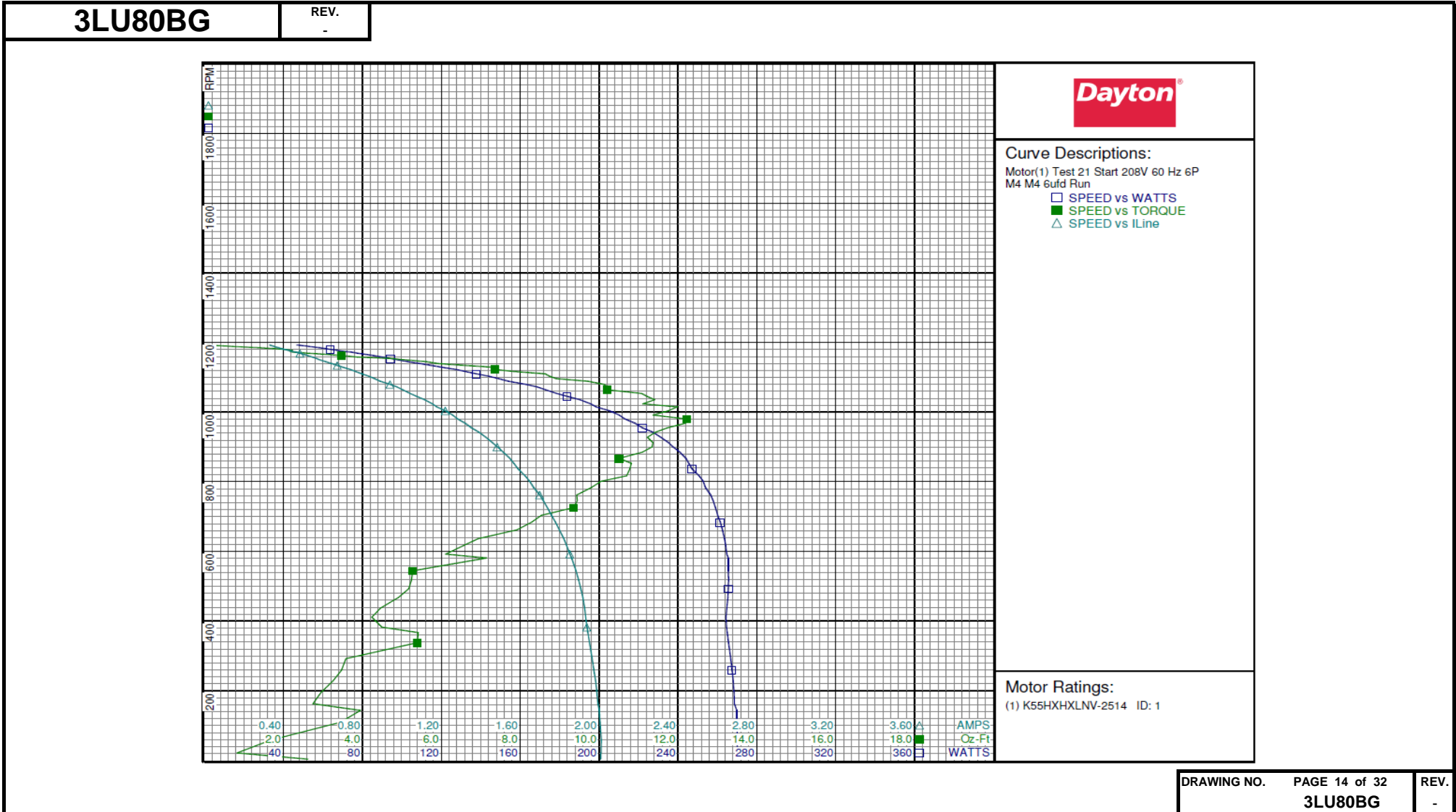
Test Conditions

Test Type: Start
 Test Number: 21
 Poles: 6
 Volts: 208
 Hz: 60
 Rotation: Special Cond: M4
 Speed Conn: M4
 TestBoard: CMD InLine Three Phase #2 Fixture #1
 Run Cap: 6
 Start Cap: 0µfd
 Environment: 23.9 Deg C 55 % RH 964 hPa
 Tested: 7/12/2016 10:44:37 AM
 Tested By: Navarro, Susana
 Gear Ratio: 1:1
 Bearing Friction: -0.37 Oz-Ft
 Windage Torque: -0.33 Oz-Ft

Special Points	Vline (V)	Vaux (V)	Vcap(V)	Iline (A)	Watts	RPM	Tq(Oz-ft)	HP	Eff (%)	PF (%)
PUT OZ-FT	208.0	44.1	150.0	2.010	270.0	21	0.824	0.000	0.1	64.6
	208.0	44.1	150.0	2.010	270.0	21	0.824	0.000	0.1	64.6
	208.0	44.1	144.1	2.001	269.8	143	3.950	0.007	1.9	64.8
	208.0	45.3	141.5	1.982	268.0	228	3.257	0.009	2.5	65.0
	208.0	47.5	137.9	1.951	265.6	338	5.393	0.022	6.1	65.4
	208.0	49.6	136.1	1.932	264.3	411	4.238	0.021	5.9	65.8
	208.0	54.1	135.3	1.908	265.5	493	5.174	0.030	8.5	66.9
	208.0	60.7	133.8	1.860	265.5	581	7.144	0.049	13.9	68.6
	208.0	65.2	133.2	1.821	263.6	637	6.933	0.053	14.9	69.6
	208.0	72.4	132.9	1.759	260.2	704	8.539	0.072	20.5	71.1
	208.0	79.3	133.5	1.700	256.6	762	9.431	0.086	24.9	72.6
	208.0	87.2	135.1	1.625	250.7	817	10.699	0.104	31.0	74.2
	208.0	95.5	137.8	1.547	244.0	867	10.511	0.109	33.2	75.8
	208.0	104.8	142.2	1.459	235.2	912	11.366	0.123	39.2	77.5
	208.0	115.4	149.1	1.353	222.0	955	11.730	0.133	44.8	78.9
	208.0	124.8	156.0	1.258	210.2	991	11.368	0.134	47.6	80.3
	208.0	134.9	164.7	1.155	195.8	1024	11.108	0.135	51.6	81.5
	208.0	145.3	174.8	1.042	178.5	1053	11.079	0.139	58.1	82.4
	208.0	154.5	184.1	0.941	162.8	1080	10.119	0.130	59.6	83.2
	208.0	164.4	195.1	0.832	144.2	1103	8.743	0.115	59.4	83.3
	208.0	172.5	204.6	0.740	127.6	1122	7.365	0.098	57.5	83.0
	208.0	180.9	215.1	0.645	109.4	1139	5.924	0.080	54.8	81.6
	208.0	187.5	223.9	0.569	94.4	1154	4.757	0.065	51.6	79.8
	208.0	192.7	231.7	0.504	81.7	1166	3.100	0.043	39.3	78.0
	208.0	197.5	241.2	0.440	69.7	1175	2.158	0.030	32.3	76.2
	208.0	204.6	253.4	0.390	61.3	1183	1.746	0.025	29.9	75.6
	208.0	210.3	262.7	0.351	52.9	1189	0.702	0.010	14.0	72.3
	208.0	213.1	266.9	0.329	46.7	1193	0.061	0.001	1.4	68.2

DRAWING NO. PAGE 13 of 32 REV.
3LU80BG -

Performance Data



Dayton Electric Mfg. Co. Lake Forest, IL 60045 USA

3LU80BG

REV.

-

Dayton Manufacturing Company

Motor Description

Model: K55HXHXLNV-2514
 Motor ID: 1
 Poles: 6
 Volts: 208-230
 Frequency: 60
 HP: 1/3
 Speed: 1075
 Phase: 1
 Protector: 7AM033-A5

Test Conditions

Test Type: Run
 Test Number: 3
 Poles: 6
 Volts: 208
 Hz: 60
 Rotation: REV
 Special Cond: M4 - LOW SPEED
 Speed Conn:
 TestBoard: CMD InLine Three Phase #2 Fixture #1
 Run Cap: 6
 Start Cap: 0µfd
 Environment: 23.9 Deg C 55 % RH 964 hPa
 Tested: 7/12/2016 10:41:46 AM
 Tested By: Navarro, Susana
 Gear Ratio: 1:1
 Bearing Friction: -0.43 Oz-Ft
 Windage Torque: -1.25 Oz-Ft

Special Points	Vline (V)	Vaux (V)	Vcap(V)	Iline (A)	Watts	RPM	Tq(Oz-ft)	HP	Eff (%)	PF (%)
	208.0	104.4	106.2	0.338	49.4	1191	0.000	0.000	0.0	70.2
	208.0	104.3	106.3	0.351	52.6	1187	0.616	0.009	12.3	72.2
	208.0	104.0	106.6	0.384	60.3	1181	1.903	0.027	33.1	75.5
	208.0	103.5	107.1	0.438	69.3	1173	3.056	0.043	45.9	76.2
	208.0	103.1	107.6	0.503	81.3	1162	4.161	0.058	52.8	77.7
	208.0	102.8	107.9	0.579	96.7	1150	5.157	0.071	54.5	80.2
	208.0	102.5	108.3	0.669	114.4	1135	6.796	0.092	59.9	82.1
	208.0	102.4	108.5	0.758	131.0	1117	8.312	0.110	62.9	83.0
8.461 OZ-FT	208.0	102.3	108.6	0.770	133.1	1114	8.461	0.112	62.9	83.1
	208.0	102.1	108.8	0.857	148.6	1096	9.392	0.123	61.5	83.4
9.947 OZ-FT	208.0	102.1	109.0	0.895	155.0	1088	9.947	0.129	62.0	83.3
	208.0	102.0	109.2	0.961	166.3	1073	10.632	0.136	61.0	83.1
11.104 OZ-FT	208.0	101.8	109.3	1.021	176.1	1060	11.104	0.140	59.3	82.9
	208.0	101.8	109.5	1.069	183.4	1046	11.493	0.143	58.2	82.5
	208.0	101.6	109.7	1.180	200.0	1016	12.374	0.150	55.8	81.5
	208.0	101.6	110.0	1.287	214.6	981	12.811	0.150	52.0	80.2
	208.0	101.5	110.2	1.388	227.3	944	12.449	0.140	45.9	78.8
BDT OZ-FT	208.0	101.6	110.3	1.481	237.6	902	13.004	0.140	43.9	77.1
	208.0	101.6	110.3	1.481	237.6	902	13.004	0.140	43.9	77.1
	208.0	101.6	110.4	1.571	246.6	855	11.770	0.120	36.3	75.5
	208.0	101.7	110.4	1.653	254.3	805	12.023	0.115	33.8	74.0
	208.0	101.9	110.4	1.726	259.2	746	10.619	0.094	27.1	72.2
	208.0	102.0	110.4	1.786	262.9	688	9.658	0.079	22.4	70.8
	208.0	102.2	110.4	1.843	265.7	622	8.891	0.066	18.5	69.3
	208.0	102.3	110.3	1.888	267.0	550	7.996	0.052	14.6	68.0
	208.0	102.5	110.3	1.923	266.4	472	6.709	0.038	10.6	66.6
	208.0	102.7	110.2	1.944	264.9	374	5.182	0.023	6.5	65.5
	208.0	103.0	109.9	1.968	267.0	284	4.867	0.016	4.6	65.2
	208.0	103.2	109.8	1.988	268.7	202	4.813	0.012	3.2	65.0
	208.0	103.5	109.6	2.004	270.0	100	4.158	0.005	1.4	64.8

DRAWING NO. PAGE 15 of 32 REV.
3LU80BG -

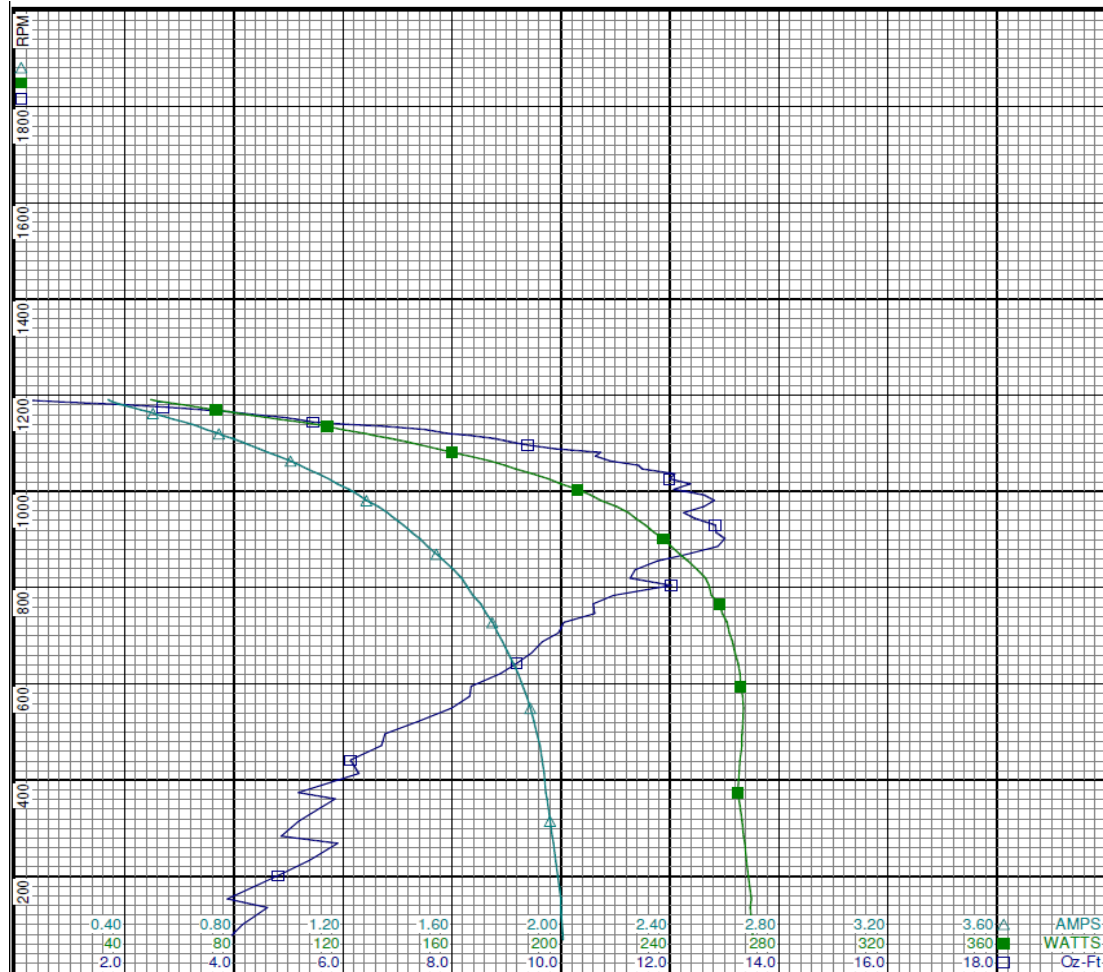
Performance Data



3LU80BG

REV.

-



Curve Descriptions:

Motor(1) Test 3 Run 208V 60 Hz 6P
M4 - LOW SPEED REV 6uid Run

- SPEED vs TORQUE
- SPEED vs WATTS
- △ SPEED vs ILine

Motor Ratings:

(1) K55HXHXLNV-2514 ID: 1

DRAWING NO.	PAGE 16 of 32	REV.
	3LU80BG	-

Dayton Electric Mfg. Co. Lake Forest, IL 60045 USA

Performance Data



3LU80BG

REV.

-

Dayton Manufacturing Company

Motor Description

Test Conditions

Model:	K55HXHXLNV-2514	Test Type:	Start	Run Cap:	6
Motor ID:	1	Test Number:	18	Start Cap:	0µfd
Poles:	6	Poles:	6	Environment:	22.9 Deg C 49 % RH 958 hPa
Volts:	208-230	Volts:	230	Tested:	7/11/2016 5:39:21 PM
Frequency:	60	Hertz:	60	Tested By:	Briebesca, Griselda
HP:	1/3	Rotation:		Gear Ratio:	1:1
Speed:	1075	Special Cond:	M1	Bearing Friction:	-0.64 Oz-Ft
Phase:	1	Speed Conn:	M1	Windage Torque:	-0.88 Oz-Ft
Protector:	7AM033-A5	TestBoard:	CMD InLine Three Phase #2 Fixture #1		

Special Points	Vline (V)	Vaux (V)	Vcap (V)	Iline (A)	Watts	RPM	Tq (Oz-ft)	HP	Eff (%)	PF (%)
PUT OZ-FT	230.0	72.2	269.8	6.083	1014.4	17	9.47	0.002	0.1	72.5
	230.0	72.2	269.8	6.083	1014.4	17	9.47	0.002	0.1	72.5
	230.0	75.3	264.2	6.055	1011.4	125	12.27	0.018	1.4	72.6
	230.0	79.8	259.8	6.004	1007.0	228	14.97	0.041	3.0	72.9
	230.0	84.9	256.1	5.933	1002.3	321	17.26	0.066	4.9	73.4
	230.0	92.9	253.5	5.836	995.8	409	20.92	0.102	7.6	74.2
	230.0	102.1	251.2	5.717	986.5	491	23.81	0.139	10.5	75.0
	230.0	112.7	249.9	5.574	974.7	569	27.79	0.188	14.4	76.0
	230.0	124.1	249.5	5.416	959.6	639	31.11	0.237	18.4	77.0
	230.0	136.8	250.7	5.231	939.7	705	33.97	0.285	22.6	78.1
	230.0	149.9	253.4	5.034	916.7	763	36.49	0.331	27.0	79.2
	230.0	164.9	258.1	4.810	889.2	818	38.83	0.378	31.7	80.4
	230.0	181.0	265.4	4.559	854.8	868	40.67	0.420	36.7	81.5
	230.0	197.4	274.4	4.305	818.9	913	41.81	0.455	41.4	82.7
	230.0	215.5	286.4	4.010	772.5	955	42.64	0.485	46.8	83.7
	230.0	233.4	300.2	3.719	724.1	991	41.99	0.495	51.0	84.7
	230.0	248.2	313.1	3.466	679.0	1021	40.33	0.490	53.8	85.2
	230.0	269.2	332.7	3.100	611.9	1055	38.12	0.479	58.4	85.8
	230.0	286.3	350.3	2.793	550.2	1081	34.90	0.449	60.9	85.6
	230.0	302.2	367.7	2.498	488.9	1104	31.11	0.409	62.4	85.1
	230.0	317.1	385.0	2.224	426.4	1124	26.32	0.352	61.6	83.4
	230.0	327.6	398.0	2.012	375.8	1140	21.82	0.296	58.8	81.2
	230.0	337.5	411.3	1.817	325.4	1154	17.18	0.236	54.1	77.9
	230.0	343.8	422.6	1.644	277.4	1166	13.08	0.182	48.8	73.4
	230.0	349.8	434.8	1.508	238.1	1175	9.18	0.128	40.2	68.6
	230.0	353.9	443.3	1.435	211.2	1183	5.87	0.083	29.2	64.0
	230.0	357.1	450.2	1.387	183.8	1188	2.79	0.039	16.0	57.6
	230.0	359.2	454.5	1.369	164.8	1193	0.64	0.009	4.1	52.3
	230.0	359.8	455.7	1.364	159.0	1194	0.00	0.000	0.0	50.7

DRAWING NO.	PAGE 17 of 32	REV.
3LU80BG		-

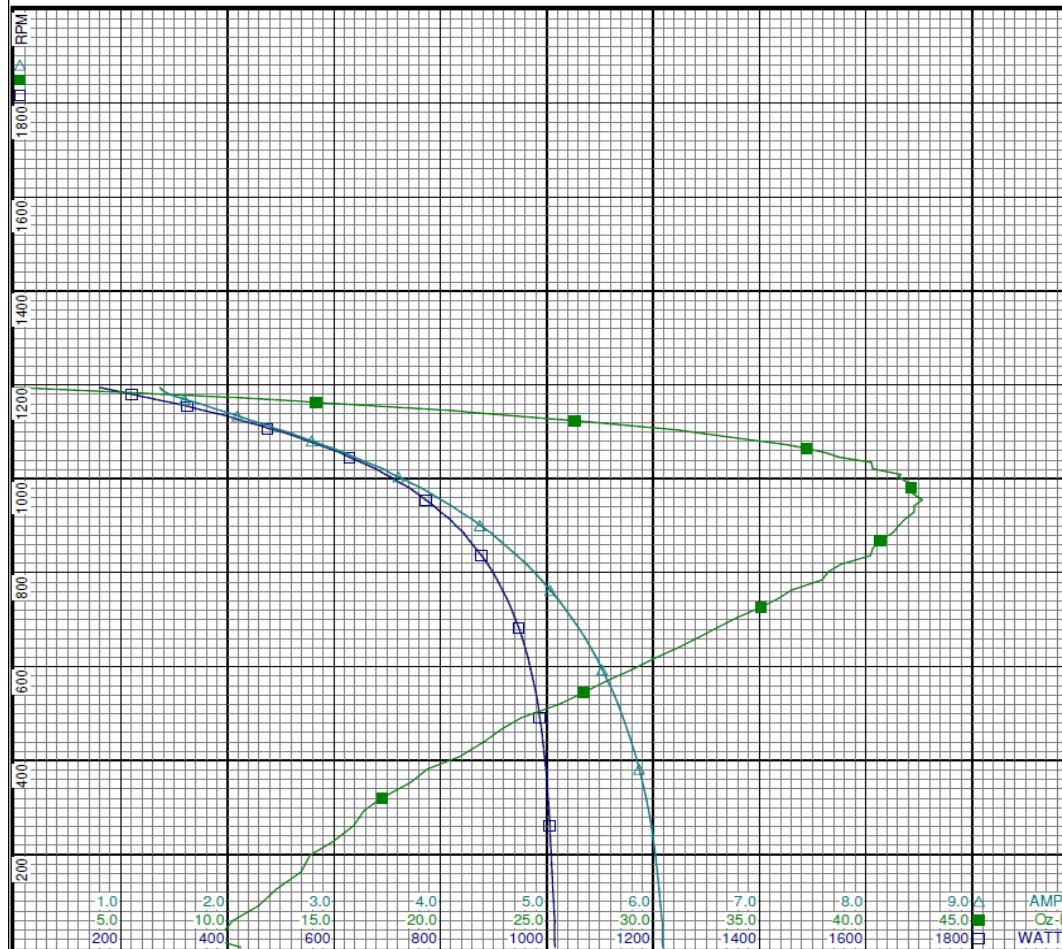
Performance Data



3LU80BG

REV.

-



Curve Descriptions:

Motor(1) Test 18 Start 230V 60 Hz 6P
M1 M1 6ufd Run

- SPEED vs WATTS
- SPEED vs TORQUE
- △ SPEED vs ILine

Motor Ratings:

(1) K55HXHLNV-2514 ID: 1

DRAWING NO.	PAGE 18 of 32	REV.
3LU80BG		-

Dayton Electric Mfg. Co. Lake Forest, IL 60045 USA

3LU80BG

REV.

-

Dayton Manufacturing Company

Motor Description

Model: K55HXHXLNV-2514
 Motor ID: 1
 Poles: 6
 Volts: 208-230
 Frequency: 60
 HP: 1/3
 Speed: 1075
 Phase: 1
 Protector: 7AM033-A5

Test Conditions

Test Type: Run
 Test Number: 4
 Poles: 6
 Volts: 230
 Hz: 60
 Rotation: REV
 Special Cond: M1 - HIGH SPEED
 Speed Conn:
 TestBoard: CMD InLine Three Phase #2 Fixture #1
 Run Cap: 6
 Start Cap: 0µfd
 Environment: 22.9 Deg C 49 % RH 958 hPa
 Tested: 7/11/2016 5:35:12 PM
 Tested By: Bribiesca, Griselda
 Gear Ratio: 1:1
 Bearing Friction: -0.77 Oz-Ft
 Windage Torque: -1.12 Oz-Ft

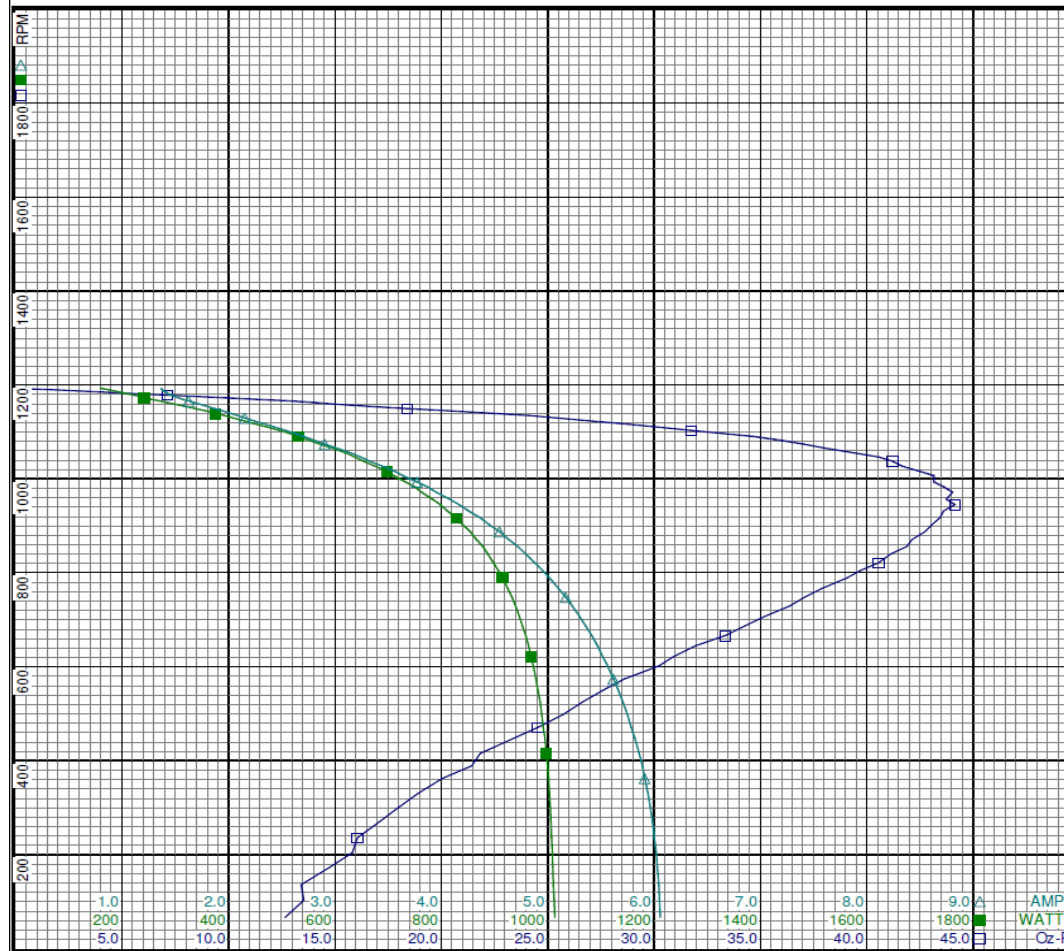
Special Points	Vline (V)	Vaux (V)	Vcap(V)	Iline (A)	Watts	RPM	Tq(Oz-ft)	HP	Eff (%)	PF (%)
	230.0	358.8	454.8	1.364	159.2	1193	0.00	0.000	0.0	50.8
	230.0	357.1	451.3	1.378	175.6	1189	1.86	0.026	11.2	55.4
	230.0	353.8	444.6	1.420	202.3	1183	4.82	0.068	25.1	61.9
	230.0	349.1	435.2	1.492	231.1	1175	8.34	0.117	37.7	67.3
	230.0	344.1	423.7	1.627	271.1	1166	12.93	0.179	49.4	72.4
	230.0	337.4	411.3	1.809	321.7	1154	16.86	0.231	53.7	77.3
	230.0	327.0	397.3	2.017	375.5	1139	22.42	0.304	60.4	80.9
	230.0	315.7	383.1	2.248	431.0	1123	27.11	0.362	62.7	83.4
31.046 OZ-FT	230.0	303.5	368.6	2.490	485.6	1106	31.05	0.409	62.8	84.8
	230.0	301.1	365.8	2.536	495.7	1103	31.75	0.417	62.7	85.0
	230.0	286.3	349.5	2.809	552.7	1082	35.99	0.463	62.6	85.5
36.474 OZ-FT	230.0	283.9	347.0	2.853	561.6	1078	36.47	0.468	62.2	85.6
	230.0	268.4	330.8	3.148	620.4	1055	39.39	0.495	59.5	85.7
40.203 OZ-FT	230.0	264.6	327.1	3.213	632.6	1049	40.20	0.502	59.2	85.6
	230.0	251.6	314.9	3.443	674.9	1027	41.64	0.509	56.3	85.2
	230.0	232.8	298.5	3.772	732.8	993	43.14	0.510	51.9	84.5
	230.0	214.7	284.6	4.077	783.0	957	43.72	0.498	47.5	83.5
BDT OZ-FT	230.0	209.4	280.5	4.167	798.2	945	44.14	0.496	46.4	83.3
	230.0	197.2	272.7	4.367	828.3	917	43.42	0.474	42.7	82.5
	230.0	180.3	263.5	4.633	865.7	871	42.12	0.437	37.6	81.2
	230.0	164.3	256.6	4.878	897.8	821	40.54	0.396	32.9	80.0
	230.0	149.2	252.0	5.102	924.8	766	37.86	0.345	27.9	78.8
	230.0	135.9	249.7	5.297	946.7	708	35.22	0.297	23.4	77.7
	230.0	123.6	248.8	5.468	964.1	644	31.94	0.245	19.0	76.7
	230.0	112.3	249.2	5.618	977.8	574	28.60	0.195	14.9	75.7
	230.0	102.3	250.7	5.748	988.9	498	25.74	0.153	11.5	74.8
	230.0	93.0	253.1	5.859	997.4	415	21.83	0.108	8.1	74.0
	230.0	85.8	256.2	5.942	1003.5	330	18.91	0.074	5.5	73.4
	230.0	79.9	259.5	6.002	1007.1	236	16.06	0.045	3.3	73.0
	230.0	75.9	264.0	6.043	1010.5	136	13.42	0.022	1.6	72.7



3LU80BG

REV.

-



Curve Descriptions:

Motor(1) Test 4 Run 230V 60 Hz 6P
 M1 - HIGH SPEED REV 6ufd Run
 □ SPEED vs TORQUE
 ■ SPEED vs WATTS
 △ SPEED vs ILine

Motor Ratings:

(1) K55HXHLNV-2514 ID: 1

DRAWING NO.	PAGE 20 of 32	REV.
3LU80BG		-

Performance Data



3LU80BG

REV.

-

Dayton Manufacturing Company

Motor Description

Model: K55HXHXLNV-2514
 Motor ID: 1
 Poles: 6
 Volts: 208-230
 Frequency: 60
 HP: 1/3
 Speed: 1075
 Phase: 1
 Protector: 7AM033-A5

Test Conditions

Test Type: Start
 Test Number: 19
 Poles: 6
 Volts: 230
 Hz: 60
 Rotation:
 Special Cond: M2
 Speed Conn: M2
 TestBoard: CMD InLine Three Phase #2 Fixture #1
 Run Cap: 6
 Start Cap: 0µfd
 Environment: 24.1 Deg C 67 % RH 963 hPa
 Tested: 7/12/2016 9:56:35 AM
 Tested By: Navarro, Susana
 Gear Ratio: 1:1
 Bearing Friction: -0.43 Oz-Ft
 Windage Torque: -0.60 Oz-Ft

Special Points	Vline (V)	Vaux (V)	Vcap(V)	Iline (A)	Watts	RPM	Tq(Oz-ft)	HP	Eff (%)	PF (%)
	230.0	57.5	204.7	3.546	560.4	38	5.86	0.003	0.4	68.7
PUT OZ-FT	230.0	57.7	203.5	3.540	559.7	61	5.32	0.004	0.5	68.7
	230.0	58.9	199.9	3.527	558.2	131	6.59	0.010	1.4	68.8
	230.0	61.3	195.6	3.494	555.8	231	8.74	0.024	3.2	69.2
	230.0	65.2	191.6	3.453	552.9	325	10.02	0.039	5.2	69.6
	230.0	69.7	188.9	3.405	550.3	413	11.26	0.055	7.5	70.3
	230.0	76.0	187.2	3.347	548.1	491	13.05	0.076	10.4	71.2
	230.0	84.2	185.9	3.268	543.7	569	14.82	0.100	13.8	72.3
	230.0	93.1	185.0	3.176	537.5	640	17.07	0.130	18.1	73.6
	230.0	102.8	185.2	3.072	529.2	706	19.13	0.161	22.7	74.9
	230.0	113.2	186.8	2.954	517.7	766	20.81	0.190	27.3	76.2
	230.0	126.7	190.6	2.798	501.4	828	23.39	0.231	34.3	77.9
	230.0	136.6	194.8	2.679	486.9	870	23.39	0.242	37.1	79.0
	230.0	149.4	201.8	2.520	465.6	914	23.97	0.261	41.8	80.3
	230.0	163.1	210.8	2.354	442.3	956	24.35	0.277	46.7	81.7
	230.0	176.8	221.4	2.178	414.9	992	24.16	0.285	51.3	82.9
	230.0	190.7	233.5	1.995	384.7	1025	23.37	0.285	55.3	83.8
	230.0	204.6	246.8	1.811	352.2	1055	22.08	0.277	58.7	84.6
	230.0	218.6	261.5	1.620	315.8	1081	20.13	0.259	61.2	84.8
	230.0	231.0	275.2	1.445	281.9	1103	18.21	0.239	63.3	84.8
	230.0	243.0	289.3	1.276	246.4	1123	15.42	0.206	62.4	84.0
	230.0	253.0	301.8	1.130	214.4	1140	12.79	0.174	60.4	82.5
	230.0	261.2	312.0	1.013	188.7	1153	9.83	0.135	53.4	81.0
	230.0	268.4	323.6	0.886	158.6	1166	7.23	0.100	47.2	77.8
	230.0	275.6	336.7	0.782	135.2	1175	5.37	0.075	41.5	75.2
	230.0	281.5	347.8	0.712	118.6	1183	3.35	0.047	29.7	72.4
	230.0	287.2	357.0	0.659	101.8	1189	1.30	0.018	13.5	67.1
	230.0	289.6	361.3	0.630	90.6	1193	0.34	0.005	4.0	62.5
	230.0	290.2	362.2	0.625	88.3	1195	0.04	0.001	0.5	61.4

DRAWING NO. PAGE 21 of 32 REV.
3LU80BG -

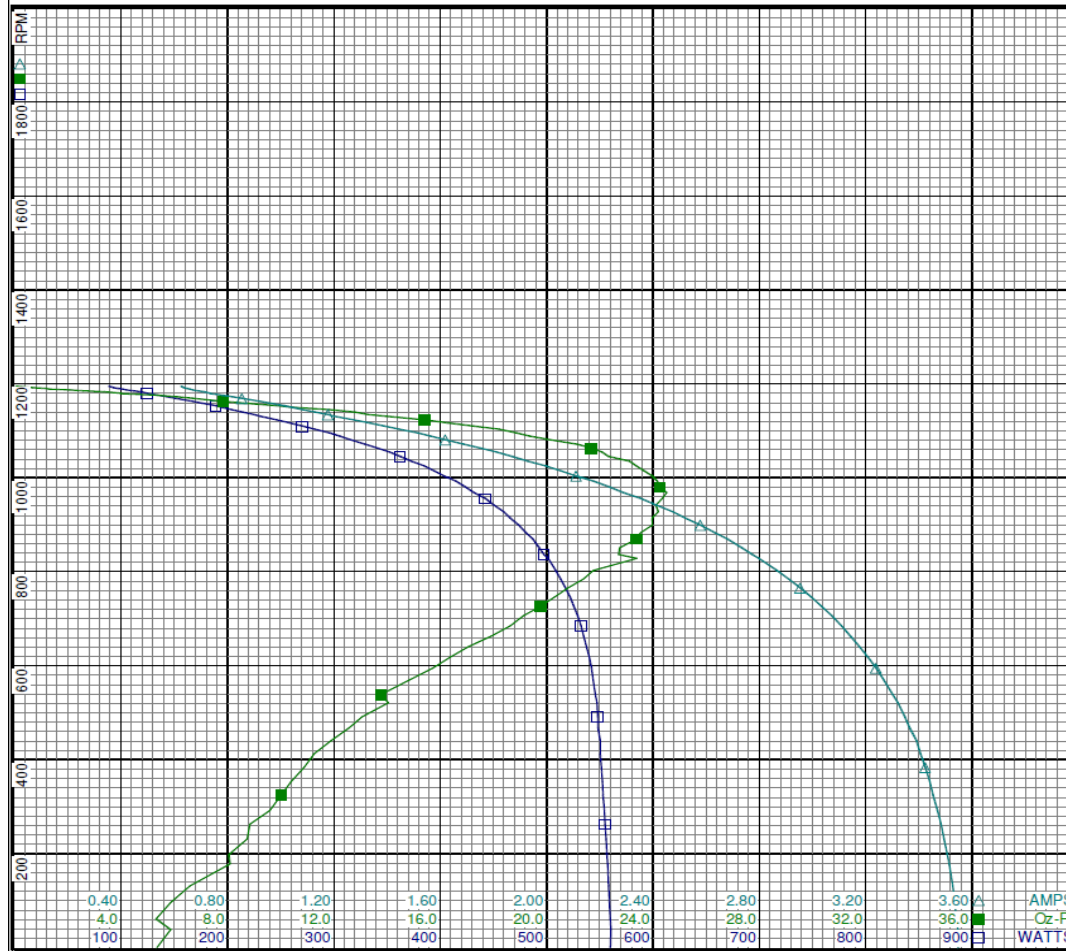
Performance Data



3LU80BG

REV.

-



Curve Descriptions:

Motor(1) Test 19 Start 230V 60 Hz 6P
M2 M2 6ufd Run

- SPEED vs WATTS
- SPEED vs TORQUE
- △ SPEED vs ILine

Motor Ratings:

(1) K55HXHXLNV-2514 ID: 1

DRAWING NO.	PAGE 22 of 32	REV.
3LU80BG		-

Dayton Electric Mfg. Co. Lake Forest, IL 60045 USA

3LU80BG

REV.

-

Dayton Manufacturing Company

Motor Description

Model: K55HXHLNV-2514
 Motor ID: 1
 Poles: 6
 Volts: 208-230
 Frequency: 60
 HP: 1/3
 Speed: 1075
 Phase: 1
 Protector: 7AM033-A5

Test Conditions

Test Type: Run
 Test Number: 5
 Poles: 6
 Volts: 230
 Hz: 60
 Rotation: REV
 Special Cond: M2 - MEDIUM-HIGH SPEED
 Speed Conn:
 TestBoard: CMD InLine Three Phase #2 Fixture #1
 Run Cap: 6
 Start Cap: 0µfd
 Environment: 24.1 Deg C 67 % RH 963 hPa
 Tested: 7/12/2016 9:54:52 AM
 Tested By: Navarro, Susana
 Gear Ratio: 1:1
 Bearing Friction: -0.41 Oz-Ft
 Windage Torque: -0.55 Oz-Ft

Special Points	Vline (V)	Vaux (V)	Vcap(V)	Iline (A)	Watts	RPM	Tq(Oz-ft)	HP	Eff (%)	PF (%)
	230.0	289.5	360.9	0.633	92.2	1192	0.00	0.000	0.0	63.4
	230.0	287.7	358.2	0.648	98.2	1189	0.78	0.011	8.4	65.9
	230.0	282.4	349.8	0.698	114.0	1183	2.78	0.039	25.6	71.1
	230.0	276.6	339.3	0.762	130.5	1175	5.04	0.071	40.3	74.5
	230.0	269.9	326.0	0.867	154.0	1166	7.16	0.099	48.1	77.2
	230.0	261.8	313.6	0.988	182.2	1154	10.37	0.143	58.4	80.2
	230.0	253.8	302.5	1.120	212.2	1139	12.85	0.174	61.3	82.4
	230.0	244.1	290.5	1.259	242.7	1124	15.67	0.210	64.5	83.8
17.44 OZ-FT	230.0	236.0	280.7	1.378	268.0	1111	17.44	0.231	64.2	84.6
	230.0	231.6	275.6	1.440	280.7	1103	18.45	0.242	64.4	84.8
20.379 OZ-FT	230.0	220.9	263.5	1.594	311.7	1085	20.38	0.263	63.0	85.0
	230.0	219.1	261.5	1.619	316.5	1082	20.72	0.267	62.9	85.0
22.656 OZ-FT	230.0	205.9	247.6	1.804	351.3	1056	22.66	0.285	60.5	84.7
	230.0	205.1	246.7	1.816	353.8	1054	22.89	0.287	60.6	84.7
	230.0	191.7	233.9	1.995	385.1	1026	24.06	0.294	56.9	83.9
	230.0	178.2	221.9	2.176	415.3	994	25.03	0.296	53.2	83.0
BDT OZ-FT	230.0	168.2	213.9	2.305	435.5	969	25.81	0.298	51.0	82.2
	230.0	163.4	210.4	2.366	444.7	956	25.38	0.289	48.5	81.7
	230.0	149.5	201.2	2.543	470.2	915	25.12	0.274	43.4	80.4
	230.0	136.7	194.3	2.696	489.7	870	24.23	0.251	38.2	79.0
	230.0	124.8	189.6	2.836	505.9	821	23.65	0.231	34.1	77.6
	230.0	113.9	186.5	2.963	519.5	769	22.23	0.204	29.2	76.2
	230.0	103.3	184.9	3.083	531.0	710	20.40	0.173	24.2	74.9
	230.0	93.4	184.7	3.186	539.0	644	18.21	0.140	19.3	73.5
	230.0	84.8	185.6	3.274	544.7	573	16.27	0.111	15.2	72.3
	230.0	75.4	187.2	3.362	549.4	485	13.59	0.078	10.7	71.1
	230.0	70.2	189.0	3.410	551.4	418	12.73	0.063	8.6	70.3
	230.0	65.2	192.2	3.454	553.8	331	11.34	0.045	6.0	69.7
	230.0	61.6	195.4	3.491	556.1	235	9.88	0.028	3.7	69.3
	230.0	59.0	199.4	3.518	558.1	138	8.17	0.013	1.8	69.0

DRAWING NO. PAGE 23 of 32 REV.
3LU80BG -

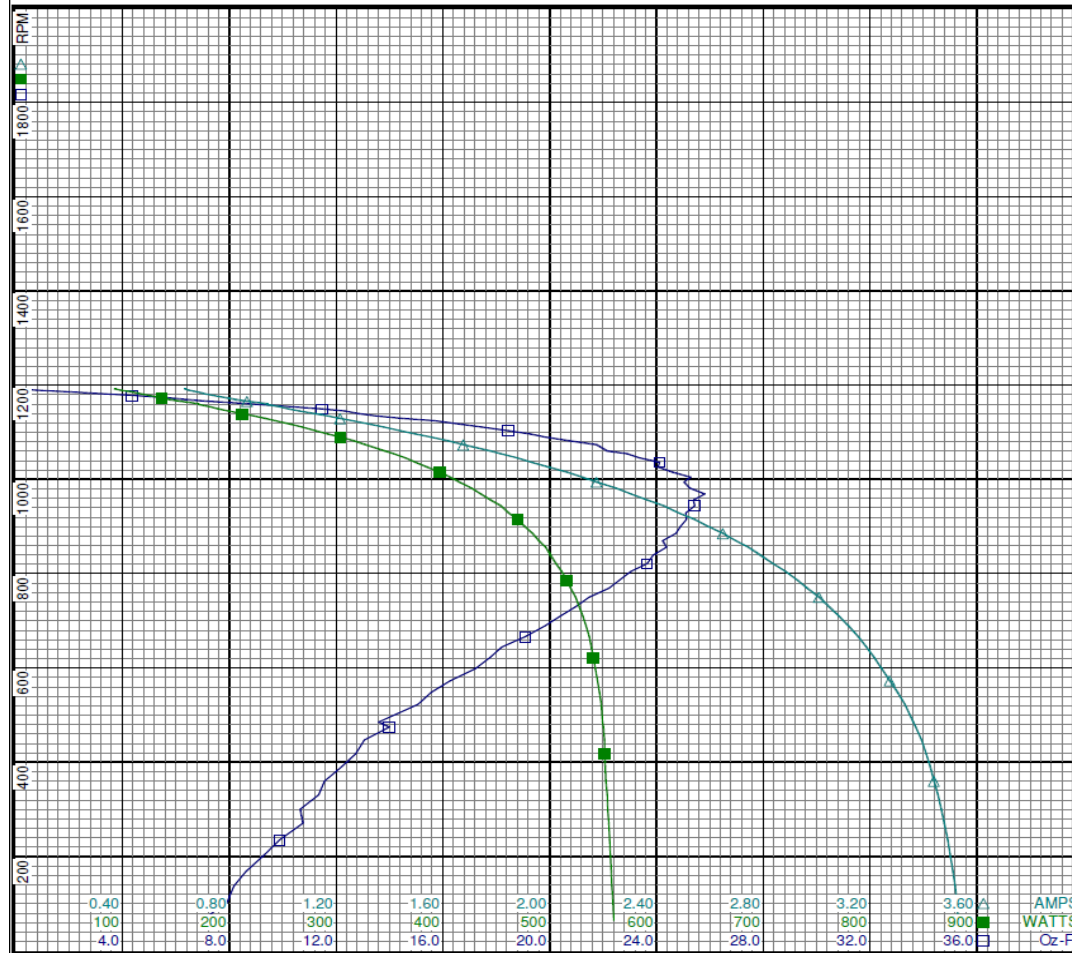
Performance Data



3LU80BG

REV.

-



Curve Descriptions:

Motor(1) Test 5 Run 230V 60 Hz 6P
M2 - MEDIUM-HIGH SPEED REV 6ufd Run

- SPEED vs TORQUE
- SPEED vs WATTS
- △ SPEED vs ILine

Motor Ratings:

(1) K55HXHLNV-2514 ID: 1

DRAWING NO.	PAGE 24 of 32	REV.
3LU80BG		-

Dayton Electric Mfg. Co. Lake Forest, IL 60045 USA



3LU80BG

REV.

-

Dayton Manufacturing Company

Motor Description

Model: K55HXHXLNV-2514
 Motor ID: 1
 Poles: 6
 Volts: 208-230
 Frequency: 60
 HP: 1/3
 Speed: 1075
 Phase: 1
 Protector: 7AM033-A5

Test Conditions

Test Type: Start
 Test Number: 20
 Poles: 6
 Volts: 230
 Hz: 60
 Rotation:
 Special Cond: M3
 Speed Conn: M3
 TestBoard: CMD InLine Three Phase #2 Fixture #1
 Run Cap: 6
 Start Cap: 0µfd
 Environment: 23.9 Deg C 55 % RH 964 hPa
 Tested: 7/12/2016 10:36:03 AM
 Tested By: Navarro, Susana
 Gear Ratio: 1:1
 Bearing Friction: -0.39 Oz-Ft
 Windage Torque: -0.83 Oz-Ft

Special Points	Vline (V)	Vaux (V)	Vcap (V)	Iline (A)	Watts	RPM	Tq(Oz-ft)	HP	Eff (%)	PF (%)
	230.0	49.2	172.9	2.533	383.5	22	2.573	0.001	0.1	65.8
PUT OZ-FT	230.0	49.6	172.0	2.531	384.0	54	2.316	0.001	0.3	66.0
	230.0	49.8	168.1	2.522	383.1	128	3.279	0.005	1.0	66.0
	230.0	51.8	164.1	2.494	380.7	230	5.369	0.015	2.9	66.4
	230.0	54.6	159.9	2.459	377.8	338	7.674	0.031	6.1	66.8
	230.0	57.3	157.9	2.433	375.9	412	6.814	0.033	6.6	67.2
	230.0	63.1	156.5	2.395	376.3	495	8.212	0.048	9.6	68.3
	230.0	69.4	155.3	2.346	375.8	570	10.118	0.069	13.6	69.6
	230.0	76.8	154.4	2.283	372.7	640	11.587	0.088	17.7	71.0
	230.0	85.1	154.3	2.204	367.3	707	13.046	0.110	22.3	72.4
	230.0	92.9	155.3	2.129	360.8	761	13.957	0.126	26.1	73.7
	230.0	102.9	157.6	2.027	351.2	820	15.246	0.149	31.6	75.3
	230.0	113.6	161.6	1.918	339.5	871	16.755	0.174	38.2	77.0
	230.0	124.2	167.2	1.808	326.0	915	17.180	0.187	42.8	78.4
	230.0	135.4	174.3	1.690	310.8	956	17.278	0.197	47.2	80.0
	230.0	147.8	184.0	1.554	290.4	993	17.394	0.206	52.9	81.2
	230.0	159.1	193.8	1.428	270.3	1025	16.830	0.205	56.7	82.3
	230.0	170.9	205.1	1.291	247.3	1055	15.512	0.195	58.8	83.3
	230.0	182.5	217.3	1.157	222.5	1081	14.034	0.181	60.6	83.7
	230.0	192.8	228.7	1.032	199.2	1104	12.498	0.164	61.5	83.9
	230.0	203.3	241.2	0.906	173.0	1123	10.694	0.143	61.6	83.1
	230.0	211.6	251.3	0.807	152.5	1140	8.406	0.114	55.8	82.2
	230.0	218.6	260.9	0.710	131.3	1154	6.863	0.094	53.5	80.4
	230.0	225.0	270.7	0.622	111.5	1166	5.208	0.072	48.4	77.9
	230.0	231.5	282.8	0.540	94.0	1175	3.697	0.052	41.0	75.6
	230.0	238.4	294.8	0.486	82.4	1183	2.409	0.034	30.7	73.7
	230.0	243.8	303.5	0.444	71.5	1188	0.916	0.013	13.5	70.0
	230.0	245.8	307.3	0.422	63.8	1193	0.192	0.003	3.2	65.8
	230.0	246.3	308.1	0.417	61.7	1194	0.000	0.000	0.0	64.4

DRAWING NO. PAGE 25 of 32 REV.
3LU80BG -

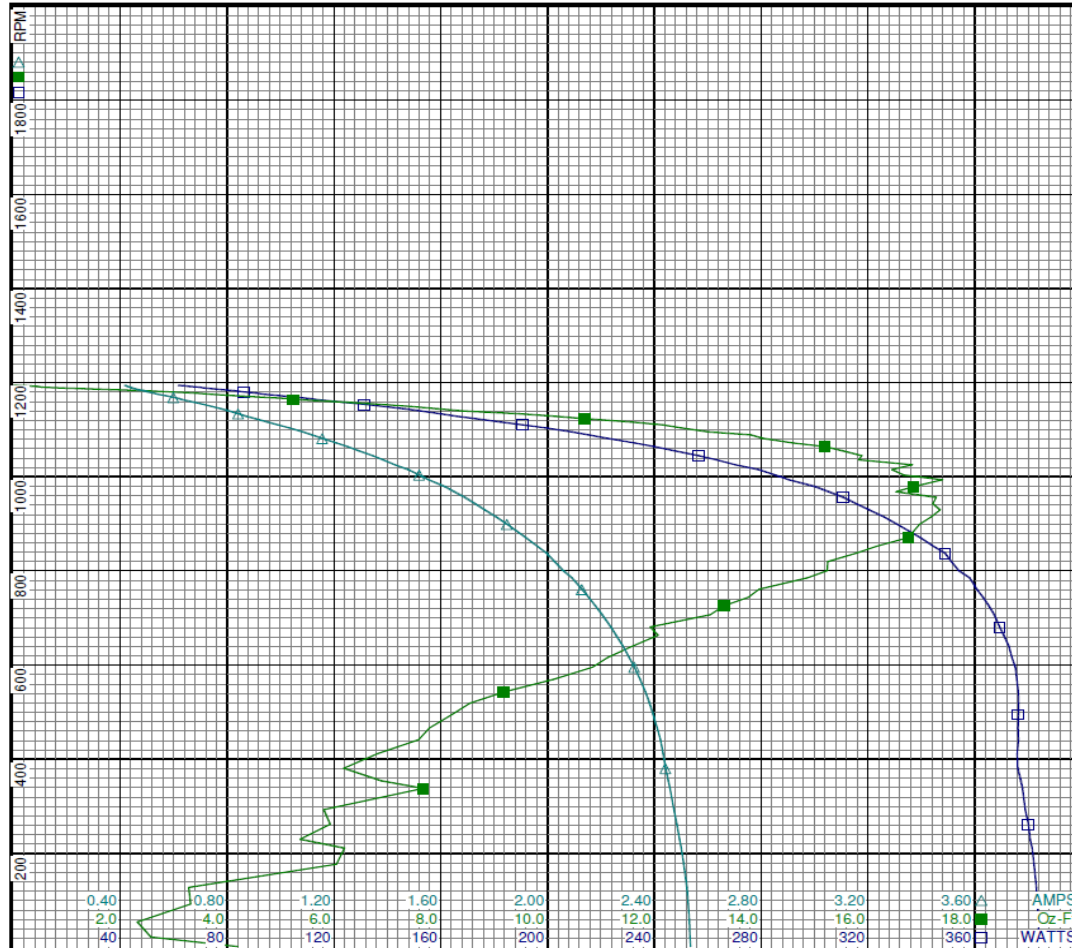
Performance Data



3LU80BG

REV.

-



Curve Descriptions:

Motor(1) Test 20 Start 230V 60 Hz 6P
M3 M3 6ufd Run

- SPEED vs WATTS
- SPEED vs TORQUE
- △ SPEED vs ILine

Motor Ratings:

(1) K55HXHLNV-2514 ID: 1

DRAWING NO.	PAGE 26 of 32	REV.
3LU80BG		-

Dayton Electric Mfg. Co. Lake Forest, IL 60045 USA

3LU80BG

REV.

-

Dayton Manufacturing Company

Motor Description

Model: K55HXHXLNV-2514
 Motor ID: 1
 Poles: 6
 Volts: 208-230
 Frequency: 60
 HP: 1/3
 Speed: 1075
 Phase: 1
 Protector: 7AM033-A5

Test Conditions

Test Type: Run
 Test Number: 14
 Poles: 6
 Volts: 230
 Hz: 60
 Rotation: REV
 Special Cond: M3 - MEDIUM-LOW SPEED
 Speed Conn:
 TestBoard: CMD InLine Three Phase #2 Fixture #1
 Run Cap: 6
 Start Cap: 0µfd
 Environment: 23.9 Deg C 55 % RH 964 hPa
 Tested: 7/12/2016 10:34:37 AM
 Tested By: Navarro, Susana
 Gear Ratio: 1:1
 Bearing Friction: -0.41 Oz-Ft
 Windage Torque: -1.33 Oz-Ft

Special Points	Vline (V)	Vaux (V)	Vcap (V)	Iline (A)	Watts	RPM	Tq (Oz-ft)	HP	Eff (%)	PF (%)
	230.0	245.3	306.1	0.428	66.7	1191	0.000	0.000	0.0	67.8
	230.0	243.0	302.5	0.447	72.5	1187	0.940	0.013	13.7	70.6
	230.0	237.1	292.5	0.495	84.7	1180	1.810	0.025	22.4	74.4
	230.0	229.8	279.1	0.563	98.8	1172	3.576	0.050	37.7	76.3
	230.0	223.5	268.6	0.637	114.7	1162	5.925	0.082	53.3	78.2
	230.0	217.0	258.9	0.728	135.0	1149	7.678	0.105	58.0	80.6
	230.0	209.0	248.3	0.828	157.2	1134	9.983	0.135	64.0	82.5
	230.0	200.1	237.1	0.944	181.6	1117	11.422	0.152	62.4	83.6
11.906 OZ-FT	230.0	198.4	235.1	0.966	185.9	1113	11.906	0.158	63.3	83.7
	230.0	189.9	225.3	1.069	206.5	1097	13.542	0.177	63.9	84.0
13.959 OZ-FT	230.0	187.4	222.5	1.099	212.0	1091	13.959	0.181	63.8	83.9
	230.0	179.3	213.5	1.198	231.1	1074	14.970	0.191	61.8	83.9
15.611 OZ-FT	230.0	175.0	208.9	1.250	240.6	1064	15.611	0.198	61.3	83.7
	230.0	167.5	201.3	1.339	256.1	1046	16.167	0.201	58.6	83.2
	230.0	156.2	190.7	1.469	277.9	1016	17.413	0.211	56.6	82.2
	230.0	144.3	180.6	1.603	298.7	982	17.966	0.210	52.5	81.0
BDT OZ-FT	230.0	140.1	177.3	1.649	305.6	970	18.046	0.208	50.9	80.6
	230.0	132.0	171.4	1.739	318.6	944	17.436	0.196	45.9	79.6
	230.0	120.6	164.6	1.858	333.5	901	17.417	0.187	41.8	78.0
	230.0	110.1	159.6	1.969	346.8	855	16.733	0.170	36.7	76.6
	230.0	100.0	156.3	2.069	356.6	804	16.000	0.153	32.0	74.9
	230.0	90.8	154.6	2.162	364.8	747	14.777	0.131	26.9	73.4
	230.0	82.1	153.9	2.242	370.9	686	13.599	0.111	22.3	71.9
	230.0	74.5	154.3	2.312	375.4	622	12.040	0.089	17.7	70.6
	230.0	67.6	155.5	2.370	377.6	550	10.745	0.070	13.9	69.3
	230.0	61.5	156.9	2.415	377.8	472	9.370	0.053	10.4	68.0
	230.0	56.3	158.2	2.446	377.0	388	8.621	0.040	7.9	67.0
	230.0	53.4	161.4	2.473	379.1	299	7.848	0.028	5.5	66.7
	230.0	51.4	165.1	2.500	381.5	205	6.581	0.016	3.1	66.4
	230.0	50.1	169.4	2.521	383.6	101	5.552	0.007	1.3	66.2

DRAWING NO. PAGE 27 of 32 REV.
3LU80BG -

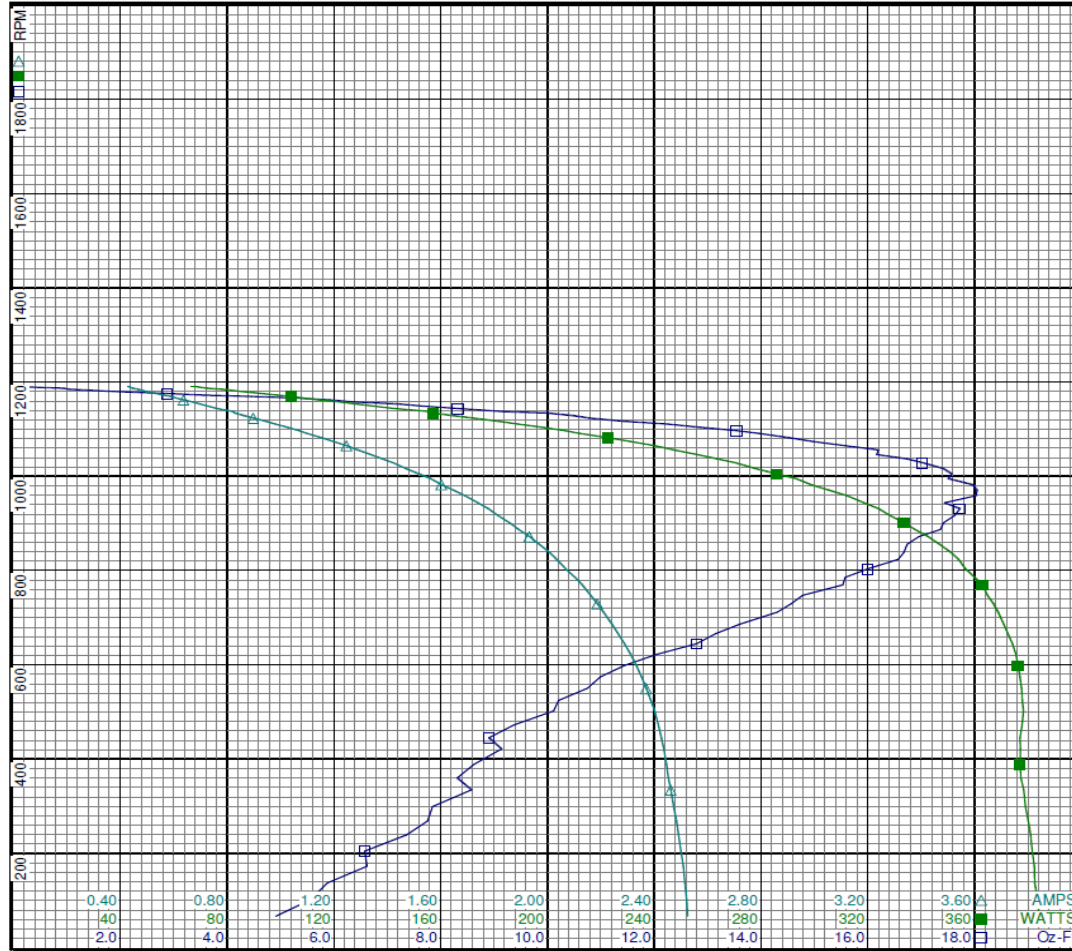
Performance Data



3LU80BG

REV.

-



Curve Descriptions:

Motor(1) Test 14 Run 230V 60 Hz 6P
M3 - MEDIUM-LOW SPEED REV 6ufd Run

- SPEED vs TORQUE
- SPEED vs WATTS
- △ SPEED vs ILine

Motor Ratings:

(1) K55HXHLNV-2514 ID: 1

DRAWING NO.	PAGE 28 of 32	REV.
3LU80BG		0

Dayton Electric Mfg. Co. Lake Forest, IL 60045 USA



3LU80BG

REV.

-

Dayton Manufacturing Company

Motor Description

Test Conditions

Model:	K55HXHXLNV-2514	Test Type:	Start	Run Cap:	6
Motor ID:	1	Test Number:	22	Start Cap:	0µfd
Poles:	6	Poles:	6	Environment:	23.9 Deg C 55 % RH 964 hPa
Volts:	208-230	Volts:	230	Tested:	7/12/2016 10:48:28 AM
Frequency:	60	Hz:	60	Tested By:	Navarro, Susana
HP:	1/3	Rotation:		Gear Ratio:	1:1
Speed:	1075	Special Cond:	M4	Bearing Friction:	-0.44 Oz-Ft
Phase:	1	Speed Conn:	M4	Windage Torque:	-1.17 Oz-Ft
Protector:	7AM033-A5	TestBoard:	CMD InLine Three Phase #2 Fixture #1		

Special Points	Vline (V)	Vaux (V)	Vcap (V)	Iline (A)	Watts	RPM	Tq (Oz-ft)	HP	Eff (%)	PF (%)
PUT OZ-FT	230.0	47.7	164.8	2.264	341.6	23	1.576	0.000	0.1	65.6
	230.0	47.7	164.8	2.264	341.6	23	1.576	0.000	0.1	65.6
	230.0	47.9	159.3	2.253	340.7	129	3.320	0.005	1.1	65.8
	230.0	49.5	155.5	2.229	338.5	228	4.305	0.012	2.6	66.0
	230.0	52.1	151.5	2.195	335.6	338	6.836	0.027	6.1	66.5
	230.0	55.0	149.4	2.172	334.0	411	5.777	0.028	6.3	66.9
	230.0	59.7	148.3	2.141	334.4	493	6.645	0.039	8.7	67.9
	230.0	66.5	147.1	2.094	334.3	571	9.117	0.062	13.8	69.4
	230.0	73.5	146.1	2.035	331.3	641	10.670	0.081	18.3	70.8
	230.0	81.0	146.1	1.969	326.8	706	11.452	0.096	22.0	72.2
	230.0	89.3	147.1	1.895	321.0	766	12.473	0.114	26.4	73.7
	230.0	98.2	149.1	1.808	312.8	820	13.934	0.136	32.5	75.2
	230.0	107.9	152.9	1.715	302.7	870	14.055	0.146	35.9	76.7
	230.0	117.6	157.7	1.621	292.0	914	14.189	0.154	39.5	78.3
	230.0	129.4	165.7	1.500	274.8	956	15.378	0.175	47.5	79.7
	230.0	139.8	173.5	1.392	259.7	993	14.473	0.171	49.2	81.1
	230.0	150.8	183.0	1.276	241.4	1025	14.248	0.174	53.7	82.2
	230.0	162.1	194.1	1.152	220.0	1055	13.829	0.174	58.9	83.1
	230.0	173.2	205.8	1.031	197.8	1081	12.459	0.160	60.5	83.4
	230.0	182.9	216.7	0.915	175.9	1104	11.465	0.151	63.9	83.6
	230.0	192.2	227.4	0.816	156.1	1123	8.891	0.119	56.8	83.1
	230.0	200.2	237.8	0.713	134.0	1140	8.018	0.109	60.6	81.8
	230.0	207.0	246.9	0.630	116.1	1154	6.180	0.085	54.6	80.1
	230.0	213.6	256.9	0.548	97.9	1165	4.612	0.064	48.8	77.6
	230.0	220.2	268.5	0.480	83.7	1175	3.193	0.045	39.8	75.9
	230.0	226.4	279.0	0.437	75.0	1182	1.636	0.023	22.9	74.6
	230.0	231.5	287.6	0.396	65.6	1189	0.359	0.005	5.8	71.9
	230.0	232.7	289.8	0.386	62.2	1191	0.000	0.000	0.0	70.1

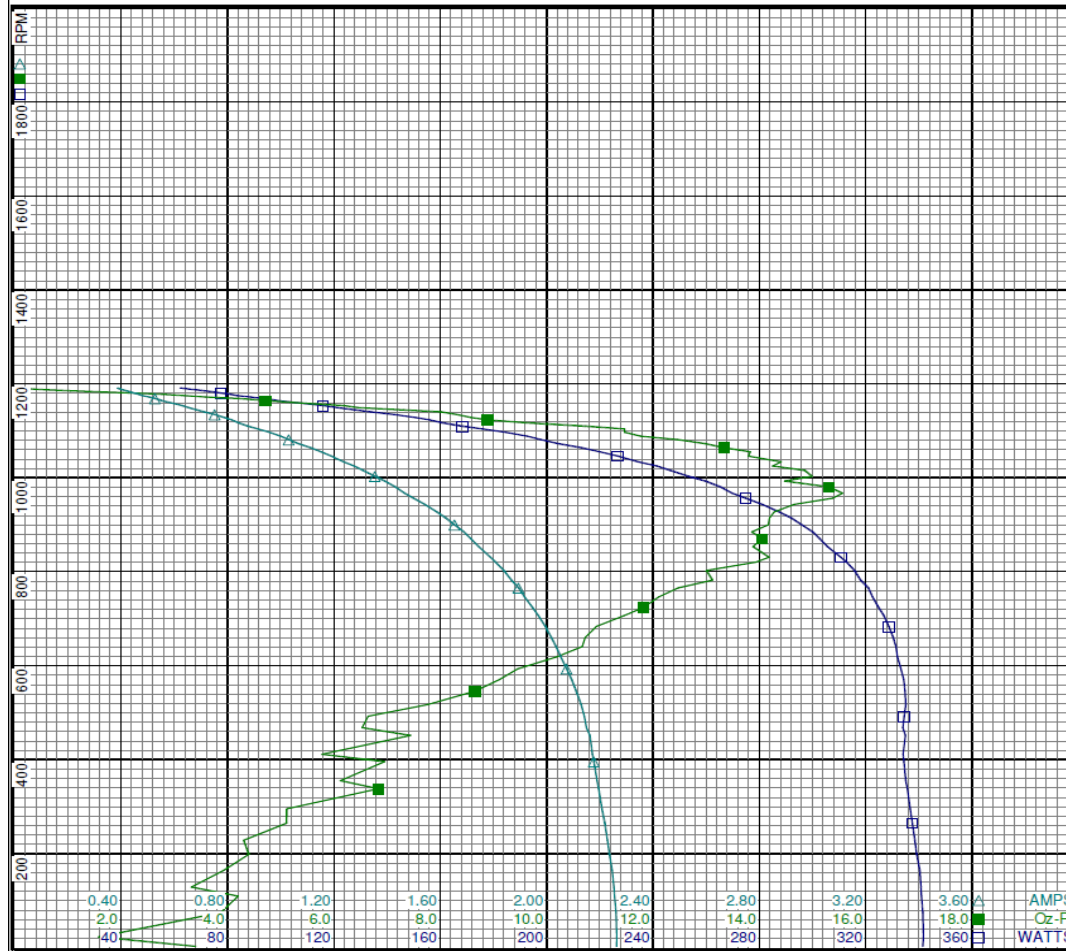
DRAWING NO. PAGE 29 of 32 REV.
3LU80BG 0

Performance Data



3LU80BG

REV.
0



Curve Descriptions:

Motor(1) Test 22 Start 230V 60 Hz 6P
M4 M4 6ufd Run

- SPEED vs WATTS
- SPEED vs TORQUE
- △ SPEED vs ILine

Motor Ratings:

(1) K55HXHXLNV-2514 ID: 1

DRAWING NO.	PAGE 30 of 32	REV.
3LU80BG		0

Dayton Electric Mfg. Co. Lake Forest, IL 60045 USA



3LU80BG

REV.
0

Dayton Manufacturing Company

Motor Description

Model: K55HXHXLNV-2514
 Motor ID: 1
 Poles: 6
 Volts: 208-230
 Frequency: 60
 HP: 1/3
 Speed: 1075
 Phase: 1
 Protector: 7AM033-A5

Test Conditions

Test Type: Run
 Test Number: 6
 Poles: 6
 Volts: 230
 Hz: 60
 Rotation: REV
 Special Cond: M4 - LOW SPEED
 Speed Conn:
 TestBoard: CMD InLine Three Phase #2 Fixture #1
 Run Cap: 6
 Start Cap: 0µfd
 Environment: 23.9 Deg C 55 % RH 964 hPa
 Tested: 7/12/2016 10:46:49 AM
 Tested By: Navarro, Susana
 Gear Ratio: 1:1
 Bearing Friction: -0.40 Oz-Ft
 Windage Torque: -0.93 Oz-Ft

Special Points	Vline (V)	Vaux (V)	Vcap(V)	Iline (A)	Watts	RPM	Tq(Oz-ft)	HP	Eff (%)	PF (%)
	230.0	232.9	290.5	0.378	59.7	1191	0.000	0.000	0.0	68.6
	230.0	230.2	286.8	0.395	64.6	1187	0.862	0.012	14.1	71.2
	230.0	225.0	278.4	0.431	73.8	1180	2.236	0.031	31.7	74.5
	230.0	217.8	265.4	0.492	86.0	1172	3.684	0.051	44.6	76.0
	230.0	212.2	254.9	0.562	100.7	1161	5.206	0.072	53.3	77.9
	230.0	206.4	245.7	0.644	119.2	1149	6.929	0.095	59.3	80.4
	230.0	198.7	235.7	0.731	138.2	1134	8.781	0.119	64.0	82.2
	230.0	189.2	223.6	0.850	163.7	1117	9.988	0.133	60.5	83.7
10.266 OZ-FT	230.0	188.2	222.4	0.859	165.6	1115	10.266	0.136	61.3	83.8
12.071 OZ-FT	230.0	180.5	213.7	0.946	182.2	1097	12.071	0.158	64.5	83.8
	230.0	180.2	213.4	0.949	182.9	1096	12.122	0.158	64.5	83.8
13.5 OZ-FT	230.0	170.8	202.9	1.058	203.7	1075	13.500	0.173	63.2	83.7
	230.0	170.0	202.0	1.067	205.4	1073	13.625	0.174	63.2	83.7
	230.0	159.1	190.7	1.190	227.5	1046	14.439	0.180	59.0	83.1
	230.0	148.3	180.5	1.309	247.3	1016	15.510	0.188	56.6	82.1
	230.0	137.0	170.9	1.428	265.5	981	16.158	0.189	53.0	80.8
BDT OZ-FT	230.0	133.4	168.0	1.466	271.6	971	16.285	0.188	51.7	80.5
	230.0	126.0	162.7	1.546	282.8	945	15.589	0.175	46.2	79.5
	230.0	115.5	156.4	1.647	295.2	902	16.235	0.174	44.1	77.9
	230.0	105.1	151.4	1.751	307.3	856	14.984	0.153	37.1	76.3
	230.0	95.6	147.9	1.844	317.6	805	14.861	0.142	33.5	74.9
	230.0	86.7	146.4	1.927	324.6	748	13.445	0.120	27.5	73.2
	230.0	78.5	145.7	2.000	330.0	686	12.201	0.100	22.5	71.7
	230.0	71.3	146.2	2.062	333.6	622	11.379	0.084	18.8	70.4
	230.0	64.6	147.3	2.115	335.8	550	10.127	0.066	14.7	69.0
	230.0	58.5	148.6	2.156	335.5	471	8.387	0.047	10.4	67.7
	230.0	53.9	149.8	2.182	334.8	389	7.701	0.036	7.9	66.7
	230.0	51.3	152.6	2.207	337.1	300	7.473	0.027	5.9	66.4
	230.0	49.3	156.5	2.233	339.1	202	6.382	0.015	3.4	66.0
	230.0	48.0	160.6	2.253	341.2	100	5.049	0.006	1.3	65.8

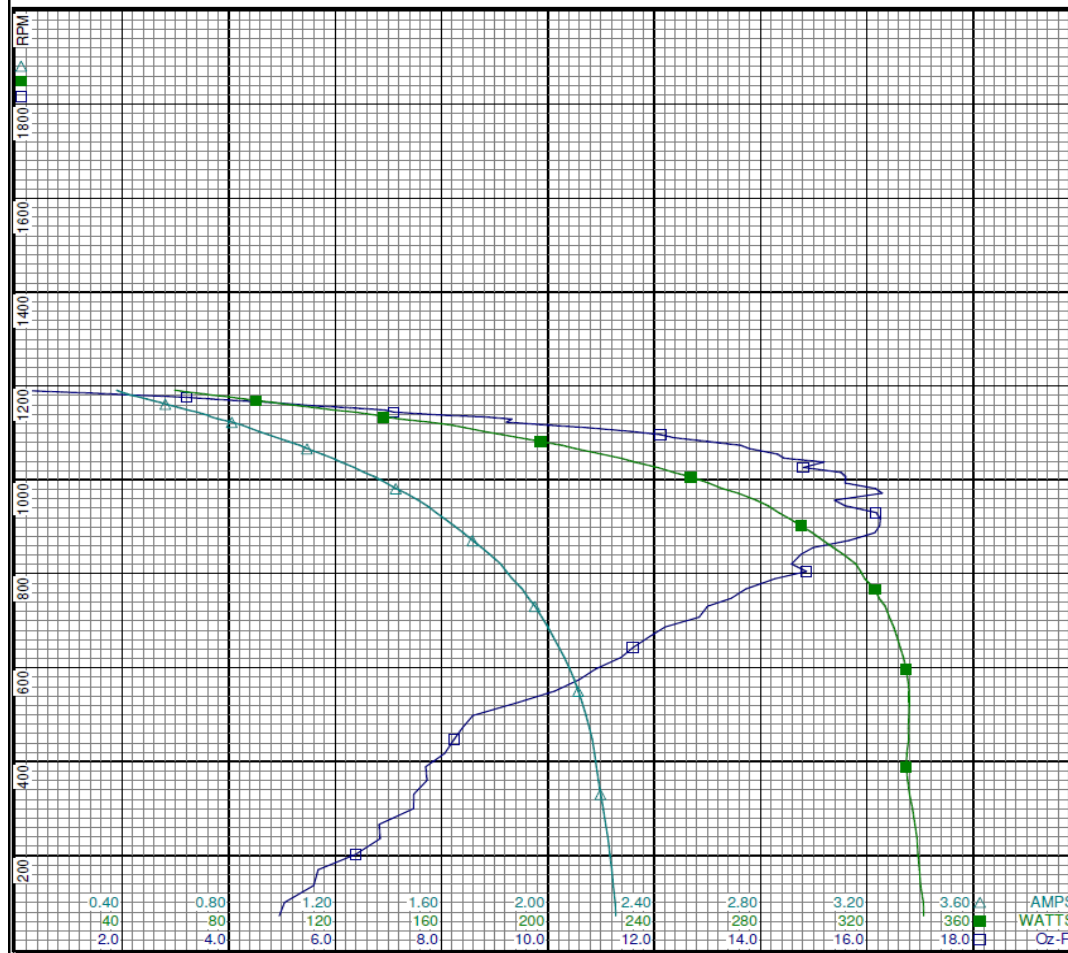
DRAWING NO. PAGE 31 of 32 REV.
3LU80BG 0

Performance Data



3LU80BG

REV.
0



Curve Descriptions:

Motor(1) Test 6 Run 230V 60 Hz 6P
M4 - LOW SPEED REV 6ufd Run
□ SPEED vs TORQUE
■ SPEED vs WATTS
△ SPEED vs ILine

Motor Ratings:

(1) K55HXHLNV-2514 ID: 1

DRAWING NO.	PAGE 32 of 32	REV.
3LU80BG		0

Dayton Electric Mfg. Co. Lake Forest, IL 60045 USA

3LU80BG	REV. -
----------------	-----------

CONNECTIONS

- COM C PURPLE
- HI 1 BLACK
- MED-HI 2 WHITE
- MED-LO 3 BLUE
- LO 4 RED
- CAP - BROWN
- CAP - BROWN/WHITE

ROTATION IS CCW LEAD END
TO REVERSE ROTATION
INTERCHANGE ORG AND YEL LEADS

DRAWING NO.	PAGE 1 of 1	REV.
3LU80BG		-

Dayton®

DIRECT DRIVE BLOWER MOTOR

HP: 1/3**VOLTS:** 208-230**AMPS:** 2.9 - 3.14**RPM:** 1075/4SPD**DUTY:** CONT**SF:** 1.0**KVA CODE:****ENCL:** OAO**THERMALLY PROTECTED:** AUTOMFG. NO. PROT. CODE: 7A000**MTR REF:** K55HXLNV-2514Part
No **3LU80BG****PH:** 1**HZ:** 60**FR:** 48YZ**INS CL:** B**AMB:** 40 °C**SFA:** 2.9 - 3.14**Disconnect Power Before Making Any
Electrical Connections or Changes**

CONNECTIONS

COM	PURPLE
HI	BLACK
MED-HI	WHITE
MED-LO	BLUE
LO	RED
CAP	BROWN
CAP	BROWN/WHITE

ROTATION IS CCW LEAD END
TO REVERSE ROTATION
INTERCHANGE ORG AND YEL LEADS



E37403



258501

**6 MFD 370 VAC
CAP. REQD.**

Mfd for Dayton Electric Mfg. Co., Lake Forest, IL 60045 USA

Made in Mexico