

# Dimensional Drawing



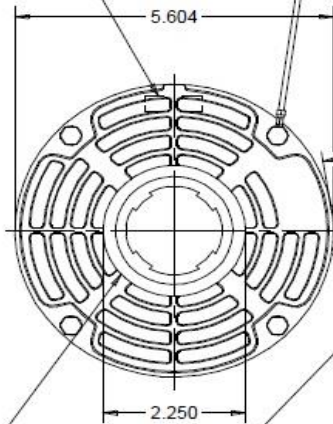
**3LU75BH**

REV.  
-

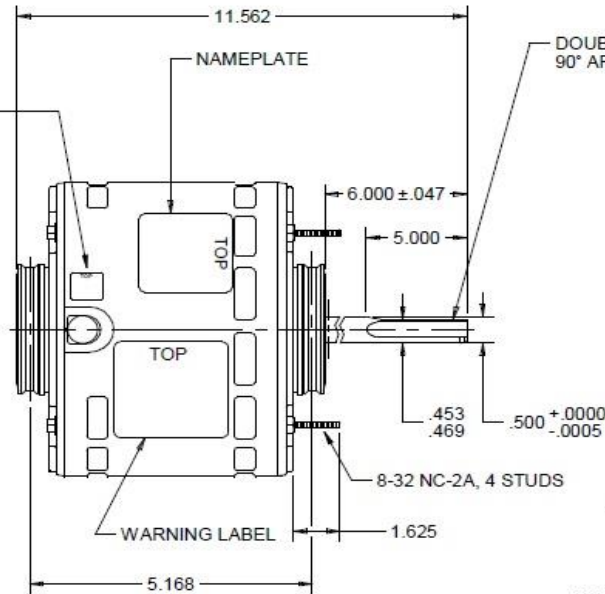
MODEL	REF	CUSTOMER	HP	VOLTS	AMPS	HZ	RPM	ROTATION	CUSTOMER PN	DESCRIPTION / REMARKS
K55HXKCT-2249		DAYTON	1/4	115	3.8	60	1075	C.C.W. LEAD END REV	3LU75BH	SAB

#16 GRN/YEL GROUND LEAD TO BE 12±.250 BETWEEN CENTERS OF TERMS. TERM. TO FIT #10 SCREW.

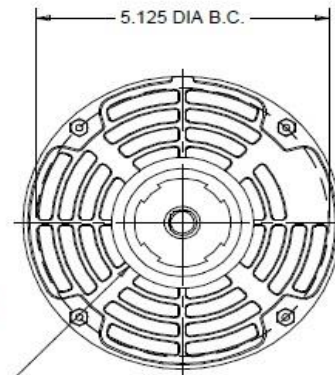
AUTOMATIC THERMAL PROTECTOR



WARNING LABEL TO BE ADJACENT TO REVERSING LEADS



DOUBLE SHAFT FLAT 90° APART



INCLUDE KIT FOR 2.5 HUB RING ASSEMBLY

SEAM WELD

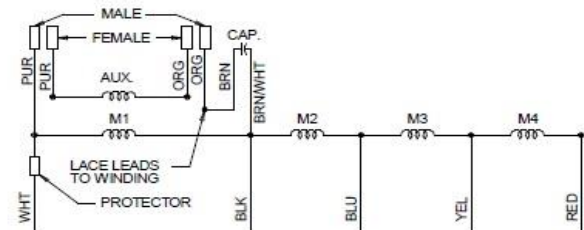
.750±.062 SKINNED

(2).250 FLAG TYPE Q.C. TERMS.

6 LEADS, #18, .031 THICK INSUL. TO EXTEND BEYOND MOTOR.  
 WHT = 30.000 +2 -0, BLK = 30.000 +2 -0, YEL = 30.000 +2 -0,  
 BLU = 30.000 +2 -0, RED = 30.000 +2 -0,  
 BRN = 30.000 +2 -0, BRN/WHT = 30.000 +2 -0

ROTATION: CCW VIEWING LEAD END WITH ORG-ORG AND PUR-PUR. TO REV. ROTATION INTERCHANGE ORG. AND PUR LEADS.

ROTATION: C.C.W. LEAD END REV



DIMENSIONS UNITS, INCHES

DRAWING NO.	PAGE 1 of 1	REV.
	3LU75BH	-

Dayton Electric Mfg. Co. Lake Forest, IL 60045 USA

**3LU75BH**

REV.

-

## SHADED-POLE & PSC MOTOR PERFORMANCE

<b>HP:</b>	1/4							
<b>Poles:</b>	6							
<b>Ambient (°C):</b>	40							
<b>Altitude (FASL):</b>	1000							
<b>No. of Speeds:</b>	4							
<b>HIGH SPEED</b>								
<b>Volts:</b>	115	115	208	230	277	460	100	200
<b>HZ:</b>	60	60	60	60	60	60	50	50
<b>Service Factor:</b>	1.0							
<b>Efficiency:</b>	@ Rated Load	57.1						
<b>Power Factor:</b>	@ Rated Load	98.6						
<b>Amps:</b>	@ No Load	2.5						
	@ Rated Load	3.8						
	@ Locked Rotor	9.6						
<b>RPM:</b>	@ Rated Load	1075						
<b>Torques: Oz.Ft.</b>	Breakdown	30.8						
	Locked Rotor	4.8						
	Pull-Up							
	Rated Load	25.8						
	Service Factor	1.0						
<b>Watts:</b>	Rated Load	431						
<b>Temperature Rise:</b>	@ Rated Load							
<b>Thermal Protector:</b>	Trip Temp (°C)	125~135						
<b>Winding Material:</b>	Start (Auxiliary)	Copper						
	Run (Main)	Copper						
<b>Capacitor:</b>	Run (MFD / Volts)	5.0 MFD 370V						
	No. of Run Capacitors	1						

## MEDIUM-HIGH SPEED

<b>HP:</b>	1/4							
<b>Volts:</b>	115	115	208	230	277	460	100	200
<b>HZ:</b>	60	60	60	60	60	60	50	50
<b>Efficiency:</b>	@ Rated Load							
<b>Power Factor:</b>	@ Rated Load							
<b>Amps:</b>	@ No Load	1.6						
	@ Rated Load							
	@ Locked Rotor							
<b>Torques: Oz.Ft.</b>	Breakdown	24						
	Locked Rotor	3.6						
	Pull-Up							
	Rated Load							
<b>Watts:</b>	Rated Load							
<b>Temperature Rise:</b>	@ Rated Load							

DRAWING NO. PAGE REV.  
3LU75BH -

**3LU75BH**

REV.  
-

## SHADED-POLE & PSC MOTOR PERFORMANCE

### MEDIUM-LOW SPEED

<b>HP:</b>	1/4							
<b>Volts:</b>	115	115	208	230	277	460	100	200
<b>HZ:</b>	60	60	60	60	60	60	50	50
<b>Efficiency:</b>	@ Rated Load							
<b>Power Factor:</b>	@ Rated Load							
<b>Amps:</b>	@ No Load	1.2						
	@ Rated Load							
<b>Torques: Oz.Ft.</b>	Breakdown	19						
	Locked Rotor	2.8						
	Pull-Up							
	Rated Load							
<b>Watts:</b>	Rated Load							
<b>Temperature Rise:</b>	@ Rated Load							
<b>Watts:</b>	Rated Load							
<b>Temperature Rise:</b>	@ Rated Load							
<b>Thermal Protector:</b>	Trip Temp (°C)	125~135						
<b>Winding Material:</b>	Start (Auxiliary)	Copper						
	Run (Main)	Copper						

### LOW SPEED

<b>HP:</b>	1/4							
<b>Volts:</b>	115	120	208	230	277	460	100	200
<b>HZ:</b>	60	60	60	60	60	60	50	50
<b>Efficiency:</b>	@ Rated Load							
<b>Power Factor:</b>	@ Rated Load							
<b>Amps:</b>	@ No Load	1						
	@ Rated Load							
<b>Torques: Oz.Ft.</b>	Breakdown	16						
	Locked Rotor	2.3						
	Pull-Up							
	Rated Load							
<b>Watts:</b>	Rated Load							
<b>Temperature Rise:</b>	@ Rated Load							

Notes:

DRAWING NO. PAGE REV.  
3LU75BH -

# Performance Data



**3LU75BH**

REV.

-

## Dayton Manufacturing Company

### Motor Description

Model: 3LU75BH  
 Motor ID: 1  
 Poles: 6  
 Volts: 115  
 Frequency: 60  
 HP: 1/4  
 Speed: 1075/4  
 Phase: 1  
 Protector:

### Test Conditions

Test Type: Run  
 Test Number: 2  
 Poles: 6  
 Volts: 115  
 Hz: 60  
 Rotation:  
 Special Cond:  
 Speed Conn: HI  
 TestBoard: Amtps Performance Fixture #4  
 Run Cap: 5  
 Start Cap: 0µfd  
 Environment:  
 Tested: 6/11/2008 2:17:48 PM  
 Tested By: TestBoard, MTC  
 Gear Ratio: 1:1  
 Bearing Friction: -1.22 Oz-Ft  
 Windage Torque: -1.53 Oz-Ft

Special Points	Vline (V)	Vaux (V)	Vcap (V)	Iline (A)	Imain (A)	Iaux (A)	Watts	RPM	Tq(Oz-ft)	HP	Eff (%)	PF (%)	Cap
	115.0	379.2	394.0	2.322	2.327	0.769	110.5	1194	0.00	0.000	0.0	41.4	5.2
	115.0	373.6	385.3	2.377	2.292	0.752	135.0	1188	2.68	0.038	21.0	49.4	5.2
	115.0	363.4	370.9	2.503	2.319	0.724	165.7	1178	5.90	0.083	37.2	57.6	5.2
	115.0	358.7	364.8	2.630	2.391	0.713	189.0	1169	7.96	0.111	43.7	62.5	5.2
	115.0	350.3	354.0	2.835	2.528	0.691	224.5	1157	11.19	0.154	51.2	68.9	5.2
	115.0	340.6	341.9	3.067	2.716	0.669	258.9	1145	14.27	0.195	56.1	73.4	5.2
	115.0	328.6	327.7	3.377	2.993	0.641	299.7	1132	17.48	0.236	58.6	77.2	5.2
<b>0.25 HP</b>	<b>115.0</b>	<b>323.4</b>	<b>321.8</b>	<b>3.516</b>	<b>3.126</b>	<b>0.630</b>	<b>316.4</b>	<b>1125</b>	<b>18.66</b>	<b>0.250</b>	<b>59.0</b>	<b>78.2</b>	<b>5.2</b>
	115.0	317.0	314.3	3.686	3.292	0.616	336.7	1118	20.12	0.268	59.3	79.4	5.2
	115.0	304.0	299.5	4.050	3.653	0.587	377.3	1101	22.77	0.298	59.0	81.0	5.2
	115.0	290.3	284.1	4.436	4.049	0.558	418.1	1082	25.20	0.325	57.9	82.0	5.2
<b>1075 RPM</b>	<b>115.0</b>	<b>285.9</b>	<b>279.2</b>	<b>4.561</b>	<b>4.179</b>	<b>0.549</b>	<b>431.1</b>	<b>1075</b>	<b>25.79</b>	<b>0.330</b>	<b>57.1</b>	<b>82.2</b>	<b>5.2</b>
	115.0	276.6	269.2	4.819	4.449	0.529	456.7	1061	27.04	0.342	55.8	82.4	5.2
	115.0	261.3	253.1	5.233	4.880	0.498	495.3	1039	28.73	0.355	53.5	82.3	5.2
	115.0	246.1	237.2	5.642	5.315	0.468	532.7	1014	29.72	0.359	50.2	82.1	5.2
	115.0	231.0	222.0	6.042	5.743	0.440	567.2	987	30.56	0.359	47.2	81.6	5.3
	115.0	215.5	207.1	6.439	6.169	0.412	599.3	957	30.57	0.348	43.3	80.9	5.3
<b>BDT OZ-FT</b>	<b>115.0</b>	<b>210.6</b>	<b>202.4</b>	<b>6.568</b>	<b>6.307</b>	<b>0.403</b>	<b>610.1</b>	<b>946</b>	<b>30.77</b>	<b>0.347</b>	<b>42.4</b>	<b>80.8</b>	<b>5.3</b>
	115.0	200.7	193.5	6.809	6.568	0.386	628.3	925	30.60	0.337	40.0	80.2	5.3
	115.0	186.5	181.0	7.159	6.948	0.362	653.9	891	29.76	0.316	36.0	79.4	5.3
	115.0	172.6	169.6	7.489	7.306	0.340	677.2	855	28.84	0.293	32.3	78.6	5.3
	115.0	159.8	160.3	7.791	7.636	0.322	696.8	818	28.02	0.273	29.2	77.8	5.3
	115.0	147.5	152.1	8.070	7.941	0.307	713.9	778	26.71	0.247	25.8	76.9	5.3
	115.0	135.8	145.1	8.332	8.228	0.293	729.2	735	25.08	0.220	22.5	76.1	5.4
	115.0	124.9	139.6	8.566	8.488	0.283	742.2	691	23.27	0.191	19.2	75.3	5.4
	115.0	114.5	135.2	8.783	8.727	0.275	753.5	643	21.56	0.165	16.3	74.6	5.4
	115.0	104.8	132.2	8.982	8.950	0.269	763.4	593	19.91	0.141	13.7	73.9	5.4
	115.0	94.9	129.7	9.163	9.151	0.264	770.9	540	18.16	0.117	11.3	73.2	5.4
	115.0	85.8	128.5	9.326	9.330	0.261	777.4	483	15.83	0.091	8.7	72.5	5.4
	115.0	78.1	128.2	9.463	9.490	0.260	783.4	424	13.03	0.066	6.3	72.0	5.4
	115.0	70.9	129.0	9.577	9.620	0.259	787.2	363	12.45	0.054	5.1	71.5	5.3
	115.0	64.7	132.1	9.672	9.733	0.264	790.9	297	9.75	0.034	3.2	71.1	5.3
	115.0	59.6	131.8	9.732	9.805	0.263	791.9	227	9.56	0.026	2.4	70.8	5.3
	115.0	54.5	134.0	9.776	9.862	0.269	793.8	153	7.43	0.014	1.3	70.6	5.3

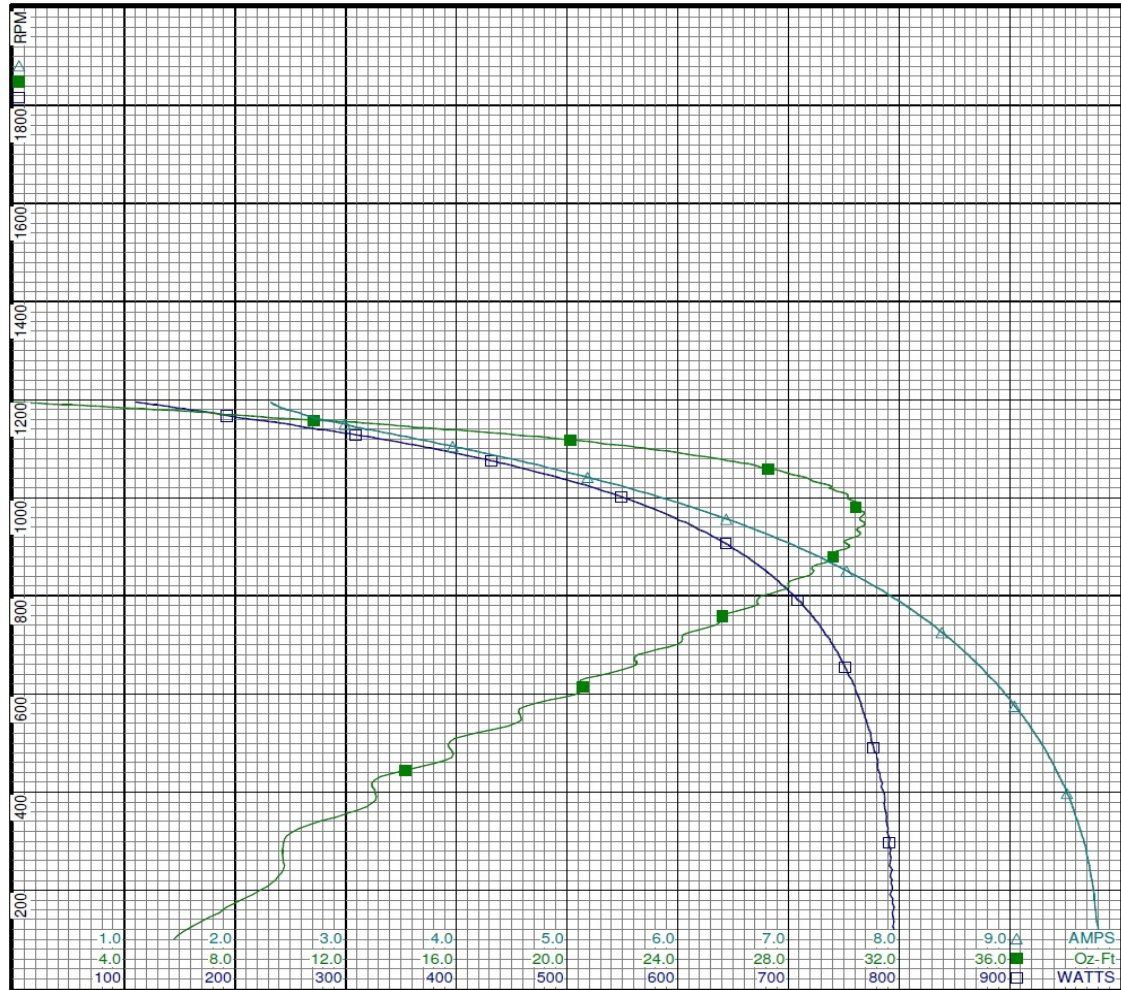
DRAWING NO. PAGE 1 of 8 REV.  
**3LU75BH** -

# Performance Data



3LU75BH

REV.  
-



Curve Descriptions:  
 Motor(1) Test 2 Run 115V 60 Hz 6P  
 HI 5ufd Run  
 □ SPEED vs WATTS  
 ■ SPEED vs TORQUE  
 △ SPEED vs ILine

Motor Ratings:  
 (1) 3LU75BH

DRAWING NO. PAGE 2 of 8 REV.  
 3LU75BH -

Dayton Electric Mfg. Co. Lake Forest, IL 60045 USA

# Performance Data



**3LU75BH**

REV.

-

## Dayton Manufacturing Company

### Motor Description

Model: 3LU75BH  
 Motor ID: 1  
 Poles: 6  
 Volts: 115  
 Frequency: 60  
 HP: 1/4  
 Speed: 1075/4  
 Phase: 1  
 Protector:

### Test Conditions

Test Type: Run  
 Test Number: 3  
 Poles: 6  
 Volts: 115  
 Hz: 60  
 Rotation:  
 Special Conn:  
 Speed Conn: MED-HI  
 TestBoard: Amtps Performance Fixture #4  
 Run Cap: 5  
 Start Cap: 0µfd  
 Environment:  
 Tested: 6/11/2008 2:42:28 PM  
 Tested By: TestBoard, MTC  
 Gear Ratio: 1:1  
 Bearing Friction: -1.02 Oz-Ft  
 Windage Torque: -1.29 Oz-Ft

Special Points	Vline (V)	Vaux (V)	Vcap (V)	Iline (A)	Imain (A)	Iaux (A)	Watts	RPM	Tq (Oz-ft)	HP	Eff (%)	PF (%)	Cap
	115.0	357.7	365.1	1.584	1.545	0.714	87.4	1194	0.00	0.000	0.0	48.0	5.2
	115.0	349.6	352.5	1.684	1.535	0.688	109.8	1187	2.42	0.034	23.2	56.7	5.2
	115.0	337.1	336.0	1.823	1.583	0.656	135.3	1176	5.06	0.071	39.0	64.6	5.2
	115.0	327.0	325.2	1.964	1.677	0.636	157.3	1167	7.07	0.098	46.6	69.6	5.2
	115.0	318.0	314.3	2.150	1.821	0.614	183.1	1155	9.42	0.130	52.8	74.1	5.2
	115.0	305.5	299.5	2.395	2.039	0.586	213.7	1143	12.00	0.163	57.0	77.6	5.2
	115.0	293.2	285.4	2.652	2.286	0.558	243.4	1129	14.26	0.192	58.7	79.8	5.2
	115.0	281.2	271.8	2.924	2.557	0.532	273.1	1113	16.26	0.215	58.8	81.2	5.2
	115.0	268.9	257.8	3.220	2.861	0.506	303.8	1096	18.20	0.238	58.3	82.0	5.2
	115.0	256.7	244.2	3.516	3.171	0.480	333.5	1077	19.72	0.253	56.6	82.5	5.2
<b>1075 RPM</b>	<b>115.0</b>	<b>255.5</b>	<b>242.9</b>	<b>3.545</b>	<b>3.202</b>	<b>0.477</b>	<b>336.4</b>	<b>1075</b>	<b>19.94</b>	<b>0.255</b>	<b>56.6</b>	<b>82.5</b>	<b>5.2</b>
	115.0	243.8	230.2	3.823	3.496	0.453	362.9	1057	21.15	0.266	54.7	82.5	5.2
	115.0	231.0	216.7	4.134	3.828	0.427	391.4	1034	22.21	0.273	52.1	82.3	5.2
	115.0	217.9	203.4	4.436	4.154	0.401	417.5	1010	22.86	0.275	49.1	81.8	5.2
	115.0	205.3	190.6	4.731	4.475	0.376	442.6	984	23.37	0.274	46.1	81.4	5.2
<b>BDT OZ-FT</b>	<b>115.0</b>	<b>203.9</b>	<b>189.2</b>	<b>4.764</b>	<b>4.511</b>	<b>0.374</b>	<b>445.1</b>	<b>981</b>	<b>23.46</b>	<b>0.274</b>	<b>45.9</b>	<b>81.2</b>	<b>5.2</b>
	115.0	192.1	178.0	5.023	4.792	0.352	464.8	956	23.36	0.266	42.6	80.5	5.2
	115.0	179.7	166.6	5.300	5.095	0.331	486.0	925	22.99	0.253	38.8	79.7	5.3
	115.0	167.8	156.2	5.558	5.377	0.311	504.9	893	22.92	0.244	36.0	79.0	5.3
	115.0	156.0	146.7	5.801	5.645	0.293	520.8	858	21.92	0.224	32.1	78.1	5.3
	115.0	144.6	138.2	6.034	5.901	0.277	536.1	821	20.99	0.205	28.6	77.3	5.3
	115.0	133.9	131.1	6.244	6.135	0.263	548.6	783	20.09	0.187	25.5	76.4	5.3
	115.0	123.5	125.0	6.443	6.355	0.251	559.7	742	19.15	0.169	22.6	75.5	5.3
	115.0	113.6	120.0	6.625	6.559	0.242	569.1	699	17.92	0.149	19.5	74.7	5.4
	115.0	103.8	116.1	6.796	6.752	0.235	577.3	651	16.52	0.128	16.5	73.9	5.4
	115.0	94.4	113.2	6.951	6.928	0.230	584.3	603	14.95	0.107	13.7	73.1	5.4
	115.0	85.8	111.4	7.091	7.085	0.227	590.4	550	13.24	0.087	10.9	72.4	5.4
	115.0	77.3	110.5	7.216	7.230	0.224	594.5	494	11.03	0.065	8.1	71.6	5.4
	115.0	69.8	110.6	7.318	7.349	0.224	597.7	435	9.74	0.050	6.3	71.0	5.4
	115.0	63.2	111.3	7.393	7.436	0.222	599.6	375	9.74	0.043	5.4	70.5	5.3
	115.0	57.6	112.1	7.457	7.511	0.223	602.8	310	7.87	0.029	3.6	70.3	5.3
	115.0	52.7	114.8	7.514	7.581	0.229	605.3	242	7.70	0.022	2.7	70.0	5.3
	115.0	47.4	116.1	7.555	7.634	0.232	606.9	172	6.51	0.013	1.6	69.9	5.3

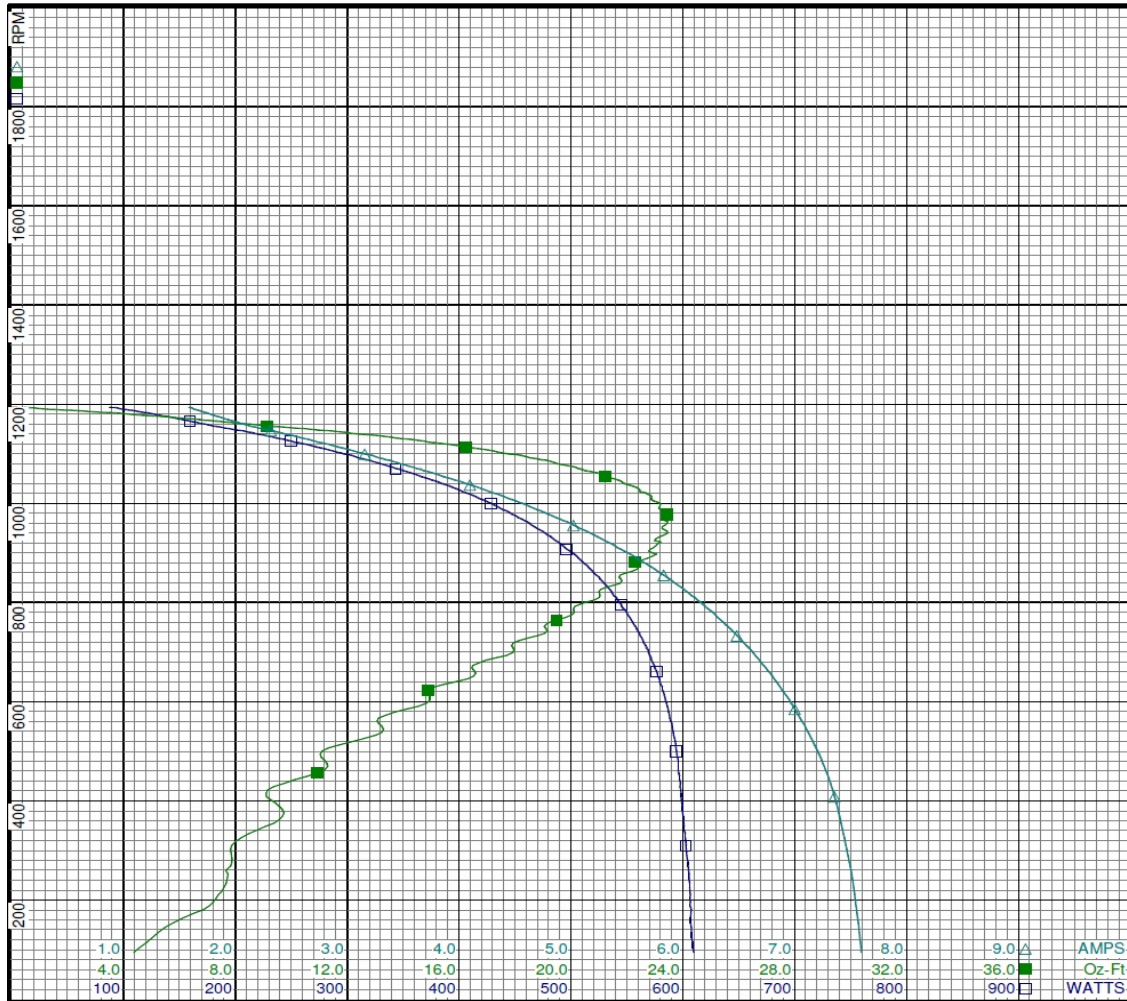
DRAWING NO. PAGE 3 of 8 REV.  
 3LU75BH -

# Performance Data



3LU75BH

REV.  
-



Curve Descriptions:  
 Motor(1) Test 3 Run 115V 60 Hz 6P  
 MED-HI 5ufd Run  
 □ SPEED vs WATTS  
 ■ SPEED vs TORQUE  
 △ SPEED vs ILine

Motor Ratings:  
 (1) 3LU75BH

DRAWING NO.	PAGE 4 of 8	REV.
	3LU75BH	-

# Performance Data



**3LU75BH**

REV.

-

## Dayton Manufacturing Company

### Motor Description

Model: 3LU75BH  
 Motor ID: 1  
 Poles: 6  
 Volts: 115  
 Frequency: 60  
 HP: 1/4  
 Speed: 1075/4  
 Phase: 1  
 Protector:

### Test Conditions

Test Type: Run  
 Test Number: 4  
 Poles: 6  
 Volts: 115  
 Hz: 60  
 Rotation:  
 Special Cond:  
 Speed Conn: MED-LO  
 TestBoard: Amtps Performance Fixture #4  
 Run Cap: 5  
 Start Cap: 0µfd  
 Environment:  
 Tested: 6/11/2008 2:43:36 PM  
 Tested By: TestBoard, MTC  
 Gear Ratio: 1:1  
 Bearing Friction: -1.07 Oz-Ft  
 Windage Torque: -1.43 Oz-Ft

Special Points	Vline (V)	Vaux (V)	Vcap (V)	Iline (A)	Imain (A)	Iaux (A)	Watts	RPM	Tq(Oz-ft)	HP	Eff(%)	PF(%)	Cap
	115.0	333.6	333.4	1.197	1.113	0.652	74.8	1192	0.000	0.000	0.0	54.3	5.2
	115.0	321.0	315.8	1.304	1.113	0.617	94.1	1184	2.171	0.031	24.2	62.8	5.2
	115.0	306.6	299.7	1.443	1.186	0.586	114.7	1173	4.347	0.061	39.5	69.2	5.2
	115.0	295.8	287.6	1.613	1.314	0.562	137.0	1162	6.438	0.089	48.5	73.9	5.2
	115.0	287.7	278.2	1.766	1.445	0.544	155.7	1151	8.010	0.110	52.6	76.7	5.2
	115.0	275.9	264.1	1.989	1.651	0.517	181.8	1136	10.094	0.137	56.0	79.5	5.2
	115.0	264.2	250.8	2.207	1.869	0.492	205.3	1122	11.915	0.159	57.8	80.9	5.2
	115.0	252.7	237.6	2.440	2.110	0.466	229.6	1106	13.475	0.177	57.7	81.8	5.2
	115.0	242.3	225.7	2.661	2.342	0.443	252.0	1089	14.718	0.191	56.5	82.4	5.2
<b>1075 RPM</b>	<b>115.0</b>	<b>233.7</b>	<b>216.1</b>	<b>2.846</b>	<b>2.537</b>	<b>0.424</b>	<b>269.5</b>	<b>1075</b>	<b>15.647</b>	<b>0.200</b>	<b>55.4</b>	<b>82.3</b>	<b>5.2</b>
	115.0	231.2	213.3	2.900	2.595	0.419	274.6	1071	15.974	0.204	55.3	82.3	5.2
	115.0	220.0	201.1	3.138	2.851	0.396	296.4	1049	16.782	0.210	52.8	82.1	5.2
	115.0	208.4	188.6	3.386	3.119	0.372	318.2	1028	17.616	0.216	50.5	81.7	5.2
	115.0	197.4	177.2	3.616	3.370	0.350	337.6	1004	17.870	0.214	47.2	81.2	5.2
<b>BDT OZ-FT</b>	<b>115.0</b>	<b>186.3</b>	<b>166.1</b>	<b>3.842</b>	<b>3.619</b>	<b>0.328</b>	<b>355.9</b>	<b>978</b>	<b>18.349</b>	<b>0.214</b>	<b>44.8</b>	<b>80.5</b>	<b>5.2</b>
	115.0	186.3	166.1	3.842	3.619	0.328	355.9	978	18.349	0.214	44.8	80.5	5.2
	115.0	175.3	155.3	4.065	3.864	0.307	372.8	950	18.094	0.205	40.9	79.7	5.3
	115.0	164.3	145.1	4.277	4.099	0.288	388.3	920	18.112	0.198	38.1	78.9	5.3
	115.0	153.9	136.2	4.475	4.319	0.271	401.7	888	17.582	0.186	34.5	78.0	5.3
	115.0	143.5	127.8	4.667	4.535	0.255	414.3	854	16.801	0.171	30.8	77.2	5.3
	115.0	133.6	120.6	4.843	4.731	0.242	424.4	818	16.317	0.159	27.9	76.2	5.3
	115.0	124.1	114.5	5.010	4.918	0.230	434.0	780	15.560	0.145	24.8	75.3	5.3
	115.0	114.7	109.2	5.166	5.095	0.221	442.4	739	14.463	0.127	21.5	74.5	5.4
	115.0	106.0	105.2	5.309	5.256	0.213	449.3	695	13.344	0.110	18.3	73.6	5.4
	115.0	97.2	102.0	5.444	5.410	0.207	455.4	648	12.114	0.093	15.3	72.7	5.4
	115.0	88.6	99.4	5.565	5.549	0.202	460.2	598	11.071	0.079	12.8	71.9	5.4
	115.0	80.9	98.3	5.673	5.674	0.201	463.6	546	9.995	0.065	10.5	71.1	5.4
	115.0	73.4	97.9	5.768	5.786	0.198	465.8	491	8.331	0.049	7.8	70.2	5.4
	115.0	66.5	97.5	5.840	5.872	0.195	466.6	431	6.635	0.034	5.4	69.5	5.3
	115.0	61.4	97.7	5.877	5.919	0.194	467.8	373	7.514	0.033	5.3	69.2	5.3
	115.0	56.5	100.6	5.924	5.977	0.199	470.6	308	6.395	0.023	3.7	69.1	5.2
	115.0	51.1	101.7	5.974	6.036	0.202	473.4	239	6.526	0.019	2.9	68.9	5.3
	115.0	45.4	104.6	6.021	6.095	0.208	476.3	161	4.385	0.008	1.3	68.8	5.3

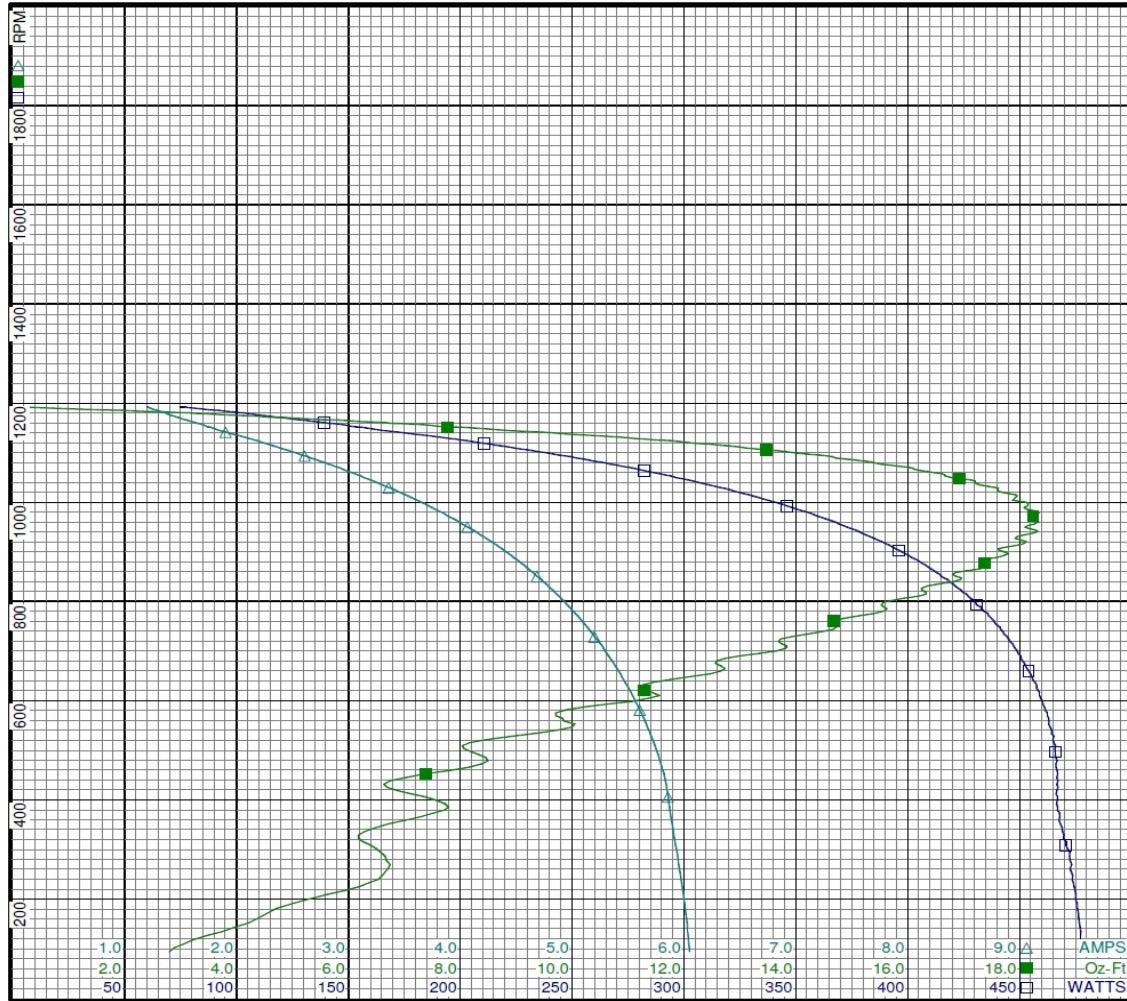
DRAWING NO. PAGE 5 of 8 REV.  
**3LU75BH** -



# Performance Data



**3LU75BH**      REV.  
-



**Curve Descriptions:**  
 Motor(1) Test 4 Run 115V 60 Hz 6P  
 MED-LO Sufd Run  
 □ SPEED vs WATTS  
 ■ SPEED vs TORQUE  
 △ SPEED vs ILine

**Motor Ratings:**  
 (1) 3LU75BH

DRAWING NO.	PAGE 6 of 8	REV.
	<b>3LU75BH</b>	-

©2019 W.W. Grainger, Inc. This design may not be reproduced, modified or redistributed without written permission from W.W. Grainger, Inc.

# Performance Data



**3LU75BH**

REV.

-

## Dayton Manufacturing Company

### Motor Description

Model: 3LU75BH  
 Motor ID: 1  
 Poles: 6  
 Volts: 115  
 Frequency: 60  
 HP: 1/4  
 Speed: 1075/4  
 Phase: 1  
 Protector:

### Test Conditions

Test Type: Run Run Cap: 5  
 Test Number: 5 Start Cap: 0µfd  
 Poles: 6 Environment:  
 Volts: 115 Tested: 6/11/2008 2:44:49 PM  
 Hz: 60 Tested By: TestBoard, MTC  
 Rotation: Gear Ratio: 1:1  
 Special Cond: Bearing Friction: -1.07 Oz-Ft  
 Speed Conn: LO Windage Torque: -1.37 Oz-Ft  
 TestBoard: Amtps Performance Fixture #4

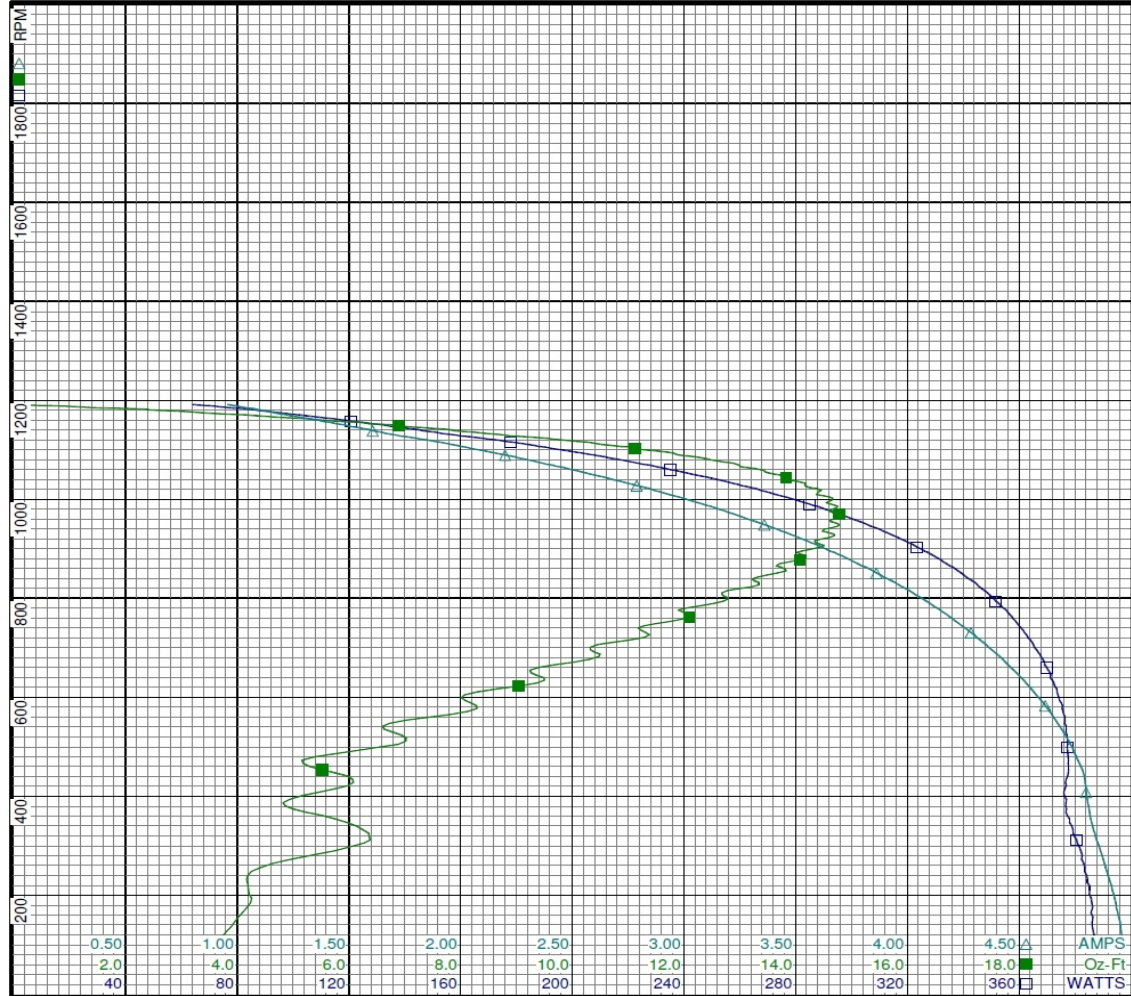
Special Points	Vline (V)	Vaux (V)	Vcap (V)	Iline (A)	Imain (A)	Iaux (A)	Watts	RPM	Tq (Oz-ft)	HP	Eff (%)	PF (%)	Cap
	115.0	312.3	307.0	0.958	0.857	0.600	64.2	1192	0.000	0.000	0.0	58.3	5.2
	115.0	297.9	287.0	1.072	0.863	0.562	82.3	1183	2.039	0.029	26.0	66.8	5.2
	115.0	282.4	270.3	1.204	0.945	0.529	99.9	1171	3.889	0.054	40.5	72.2	5.2
	115.0	270.1	256.9	1.363	1.076	0.503	118.9	1160	5.540	0.077	48.0	75.9	5.2
	115.0	262.1	247.5	1.506	1.204	0.485	135.3	1147	7.036	0.096	53.0	78.1	5.2
	115.0	254.2	237.8	1.665	1.353	0.466	153.0	1133	8.437	0.114	55.5	79.9	5.2
	115.0	242.4	224.3	1.865	1.556	0.439	174.3	1119	9.910	0.132	56.5	81.3	5.2
	115.0	232.6	213.1	2.045	1.744	0.418	192.4	1103	11.119	0.146	56.6	81.8	5.2
	115.0	222.6	201.4	2.240	1.953	0.396	211.4	1086	12.192	0.158	55.6	82.1	5.2
<b>1075 RPM</b>	<b>115.0</b>	<b>217.2</b>	<b>195.3</b>	<b>2.345</b>	<b>2.066</b>	<b>0.384</b>	<b>221.4</b>	<b>1075</b>	<b>12.727</b>	<b>0.163</b>	<b>54.9</b>	<b>82.1</b>	<b>5.2</b>
	115.0	213.0	190.3	2.431	2.159	0.375	229.7	1066	13.001	0.165	53.6	82.2	5.2
	115.0	203.2	179.6	2.619	2.363	0.354	246.1	1047	13.824	0.172	52.2	81.7	5.2
	115.0	193.4	168.9	2.808	2.570	0.333	262.4	1025	14.196	0.173	49.3	81.3	5.2
	115.0	183.4	158.4	2.999	2.780	0.312	278.1	1002	14.661	0.175	46.9	80.6	5.2
	115.0	173.9	148.5	3.180	2.981	0.294	292.4	976	14.593	0.170	43.2	79.9	5.2
<b>BDT OZ-FT</b>	<b>115.0</b>	<b>170.6</b>	<b>145.1</b>	<b>3.239</b>	<b>3.046</b>	<b>0.287</b>	<b>296.9</b>	<b>967</b>	<b>14.830</b>	<b>0.171</b>	<b>42.9</b>	<b>79.7</b>	<b>5.2</b>
	115.0	164.0	138.9	3.360	3.181	0.275	305.8	948	14.782	0.167	40.7	79.1	5.3
	115.0	154.6	130.1	3.530	3.371	0.258	317.8	919	14.440	0.158	37.1	78.3	5.3
	115.0	145.4	122.2	3.690	3.550	0.243	328.4	888	14.102	0.149	33.9	77.4	5.3
	115.0	136.3	114.7	3.845	3.725	0.229	338.1	855	13.824	0.141	31.0	76.5	5.3
	115.0	127.4	108.3	3.993	3.893	0.217	346.6	819	12.969	0.126	27.2	75.5	5.3
	115.0	118.7	102.7	4.129	4.048	0.206	354.1	780	12.078	0.112	23.6	74.6	5.3
	115.0	110.6	98.0	4.257	4.194	0.198	360.6	740	11.176	0.098	20.4	73.7	5.4
	115.0	102.5	94.5	4.376	4.330	0.192	366.2	696	10.318	0.086	17.4	72.8	5.4
	115.0	94.7	91.5	4.487	4.459	0.186	371.0	649	9.263	0.072	14.4	71.9	5.4
	115.0	86.7	89.3	4.587	4.576	0.182	374.2	599	8.012	0.057	11.4	70.9	5.4
	115.0	79.5	88.2	4.671	4.677	0.180	376.3	547	6.729	0.044	8.7	70.0	5.4
	115.0	72.7	87.3	4.743	4.763	0.177	377.3	492	6.130	0.036	7.1	69.2	5.4
	115.0	66.4	87.6	4.793	4.825	0.175	376.8	434	6.062	0.031	6.2	68.4	5.3
	115.0	61.8	87.8	4.812	4.852	0.174	376.9	373	5.019	0.022	4.4	68.1	5.2
	115.0	57.7	90.0	4.846	4.894	0.178	380.6	311	6.378	0.024	4.6	68.3	5.2
	115.0	52.6	91.8	4.897	4.956	0.183	384.1	239	4.190	0.012	2.3	68.2	5.3
	115.0	47.2	94.1	4.941	5.009	0.188	385.7	164	4.092	0.008	1.5	67.9	5.3

DRAWING NO. PAGE 7 of 8 REV.  
 3LU75BH -

# Performance Data



**3LU75BH**      REV. -



**Dayton**

Curve Descriptions:  
 Motor(1) Test 5 Run 115V 60 Hz 6P  
 LO 5ufd Run

- SPEED vs WATTS
- SPEED vs TORQUE
- △ SPEED vs ILine

Motor Ratings:  
 (1) 3LU75BH

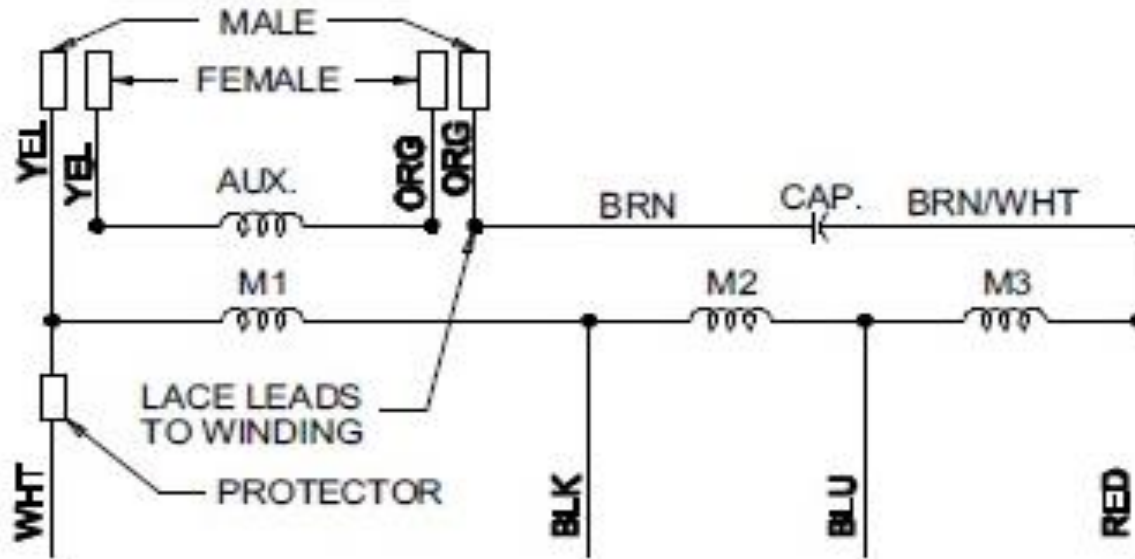
DRAWING NO.      PAGE 8 of 8      REV.  
**3LU75BH**      -

©2019 W.W. Grainger, Inc. This design may not be reproduced, modified or redistributed without written permission from W.W. Grainger, Inc.

# Wiring Diagram

3LU75BH

REV.  
-



ROTATION: CCW VIEWING LEAD END  
WITH ORG-ORG AND YEL-YEL.  
TO REV. ROTATION INTERCHANGE  
ORG. AND YEL LEADS.

ROTATION: C.CW. LEAD END REV

DRAWING NO.	PAGE 1 of 1	REV.
3LU75BH		-

# Dayton



## DIRECT DRIVE BLOWER MOTOR

Part No  
3LU75BH

BAR CODE

HP: 1/4

VOLTS: 115

AMPS: 3.8

RPM: 1075 / 4SPD

DUTY: CONT

ENCL: OAO

**THERMALLY PROTECTED: AUTO**

MFG. NO.   PROT. CODE : 7A000 AVG.F.L

MTR REF: K55HXKCT-2249

PH: 1

HZ: 60

FR: 48YZ

INS CL: B

AMB: 40 °C

SF: 1.0

EFF.

Disconnect Power Before Making Any  
Electrical Connections or Changes

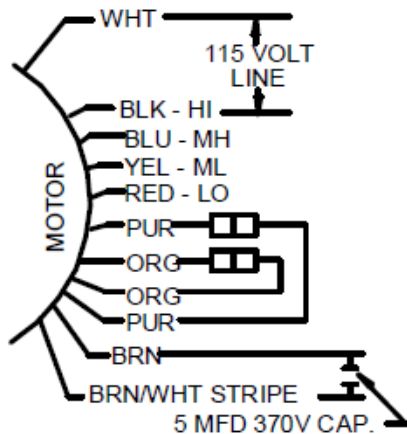


E37403



258501

TO REVERSE ROTATION  
INTERCHANGE ORG AND PUR LEADS



Mfd for Dayton Electric Mfg. Co., Lake Forest, IL 60045 USA

Made in China