

Hubbellock® Devices  
 30A, 600V AC, 20A, 250V DC, 3 Pole, 4 Wire  
 Grounding

# HUBBELL

## Hubbellock® Connector

### Features

- Spring loaded safety shutter contains arcing when mating or un-mating devices under load
- Spring loaded safety shutter automatically ejects the plug eliminating contact teasing
- Box terminals in conjunction with screws with pressure pads provide maximum termination strength and dependability
- Three-piece clamp assembly provides maximum strain relief and protects against entry of moisture and dust



### Ordering Information

Description	Cord Diameter	UPC	Catalog Number
Black nylon housing, thermoplastic interior, corrosion resistant	.700"-1.200" (17.78-30.5)	783585017570	HBL21CM414B

### Listings

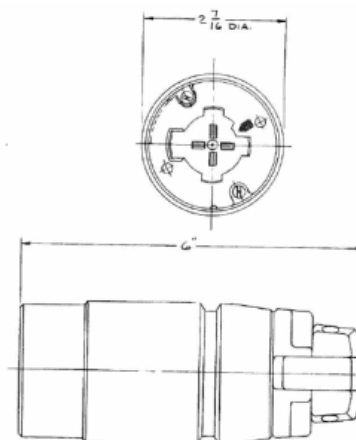
Listed to UL 498  
 Certified to CSA C22.2 No.42

### Specifications

Device Color	Yellow
Housing	Nylon
Cord Clamp Material	PET
Contact Housing	PBT
Contacts	Nickel plated bronze
Shutter	Thermoset
Terminal Screws	Stainless Steel
Assembly Screws	Stainless Steel

### Performance

Electrical	
Current Interrupting	Certified for current interrupting at full rated current
Dielectric Voltage Withstand	2,000V minimum
Mechanical	
Terminal Accommodation	#10 AWG - #6 AWG stranded copper wire only.
Terminal Identification	Terminals identified in accordance with UL 498
Environmental	
Flammability	UL 94 VO for Receptacles and Inlets. HB or better for Plugs and Connectors
Moisture Resistance	IP30 Suitability
Operating Temperatures	Maximum Continuous 75°C; Minimum -40°C (w/o impact)



### Accessories

Plug	HBL21CM415B
"Mini" Boot	HBL20424B
Flanged Inlet	HBL22CM428
"Mini" Boot	HBL20425B

### Resources

Customer Use Drawing  
 eCatalog

Dimensions in Inches (mm)

Hubbell Wiring Device-Kellems • Hubbell Incorporated (Delaware) • 40 Waterview Drive • Shelton, CT 06484

Phone (800) 288-6000 • Fax (800) 255-1031 • Specifications subject to change without notice.

