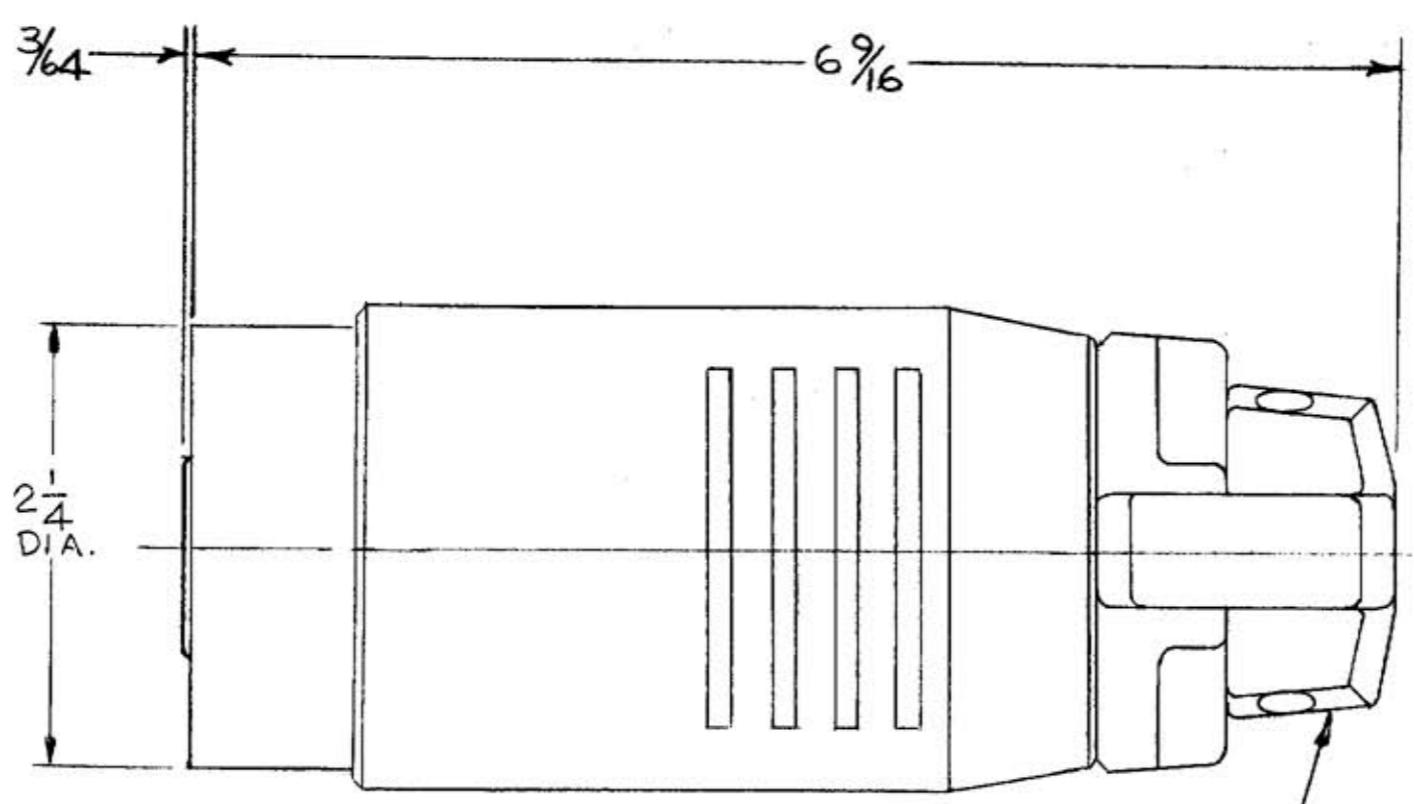
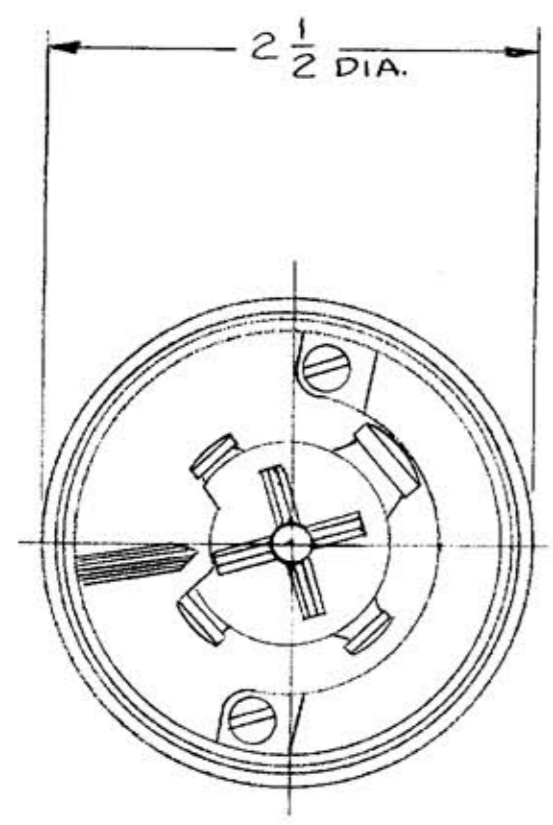


M-6581 | 2



CORD GRIPS TAKE CORDS
FROM .625 TO 1.050 DIA.

LIST OF PARTS

DESCRIPTION	MATERIAL	FINISH
BASE	PHENOLIC	
CONTACT BLADES	BRONZE	
PRESS. TERMINAL	COPPER	
EYELET	BRASS	
THREADED SLUG	STEEL	ZINC PL.
HOUSING	NYLON	BLACK
LINER	DUREZ	
GLAND CAP	NYLON	BLACK
COVER	STEEL	
GD CLP SCREW	BRASS	
CORD GRIP	POLYESTER	
GLAND	RUBBER	BLACK
GRIP SCREW	STAIN. ST	
GLAND CAP SCR.	STAIN. ST.	
MTG. SCREW	STAIN. ST.	

DIMENSION SHEET FOR CAT. NO. 25415 B

REPAIRABLE NON-REPAIRABLE

SYM	REVISIONS	APP	DATE
2	CORD GRIP MATL. WAS NYLON	MM	12-4-89
1	OVERALL DIMS. REVISED	MM	11-28-89

B M-6581

THE DESIGN AND DIMENSIONS OF THE
PRODUCT SHOWN ON THIS DRAWING ARE
SUBJECT TO CHANGE WITHOUT NOTICE.

TITLE
30A 600V A.C. 20A 250V D.C.
FIVE-WIRE NO-METALLIC
HUBBELLOCK PLUG WITH
CORD GRIP

TOLERANCES UNLESS
OTHERWISE SPECIFIED
FRACTIONS ± 1/64
DECIMALS ± .005
ANGLES ± 2°

WIRING DEVICE DIVISION
HARVEY HUBBELL, INC.
BRIDGEPORT, CONN.
DR. BY AJL APP. BY _____
TR. BY _____ SCALE FULL
CHK'D. BY _____ DATE 6-24-87