

Please read and save these instructions. Read through this owner's manual carefully before using product. Protect yourself and others by observing all safety information, warnings, and cautions. Failure to comply with instructions could result in personal injury and/or damage to product or property. Please retain instructions for future reference.

Westward® Low Profile Jacks

Description

Westward Low Profile Jacks are suitable for a wide range of lifting and pushing tasks. Usable vertically or horizontally, their low profile design makes them ideal for working in tight spaces. Spring return provides quick retraction of the ram when hydraulic pressure is relieved.

This product is not intended for sustaining loads. Suitable blocking and/or cribbing must be used to support the load after it is lifted and/or moved. Westward products are designed to meet or exceed applicable ASME/ANSI standards.



Specifications

Model	Capacity US tons (kN)	Min. Height inch (mm)	Max. Stroke inch (mm)	Length inch (mm)	Width inch (mm)
3CFK6	5 Ton (44)	1.61 (41)	0.25 (5)	12.04 (306)	3.19 (81)
3CFK7	5 Ton (44)	2.20 (56)	1.00 (25)	11.42 (290)	3.19 (81)
3CFK8	10 Ton (89)	1.80 (48)	0.60 (15)	12.24 (311)	3.43 (87)
3CFK9	10 Ton (89)	2.48 (63)	1.00 (25)	11.14 (283)	3.43 (87)
3CFL1	20 Ton (178)	2.40 (61)	0.60 (15)	12.79 (325)	4.13 (105)
3CFL2	20 Ton (178)	2.80 (71)	1.00 (25)	15.15 (385)	4.13 (105)
Conversion to kg: 5 US Tons = 4,541 kg • 10 US Tons = 9,083 kg • 20 US Tons = 18,165 kg					

Safety Information

⚠️WARNING Study, understand and follow all instructions before operating this device. Use as a Lifting device only. When lifting vehicles, intended use is for lifting part of a total vehicle, only one wheel or axle at a time.

- Immediately after lifting, support load with appropriate means.
- Do not exceed rated capacity. Use only on hard, level surfaces capable of sustaining rated capacity loads.
- When lifting vehicles, lift only on those areas of the vehicle as specified by the vehicle manufacturer. Ensure that the lift point is properly centered on the jack saddle.
- Always wear safety glasses when using this equipment.

- Inspect jack before each use. Do not use if bent, broken, leaking, or damaged components are noted.
- No alteration of this product is allowed. Do not use this device for any purpose other than that for which it is intended.
- Do not overload.
- Do not open oil fill plug for any reason unless jack is fully lowered.
- Do not loosen release valve more than one turn counterclockwise from fully closed.
- Never attempt to loosen or remove hex screw located on jack housing, under the ram. This screw is used for product assembly purposes only.
- Stop pumping immediately if maximum stroke indicator line appears.

⚠️WARNING Failure to heed any one or combination of the following precautions may result in severe personal injury and/or property damage.

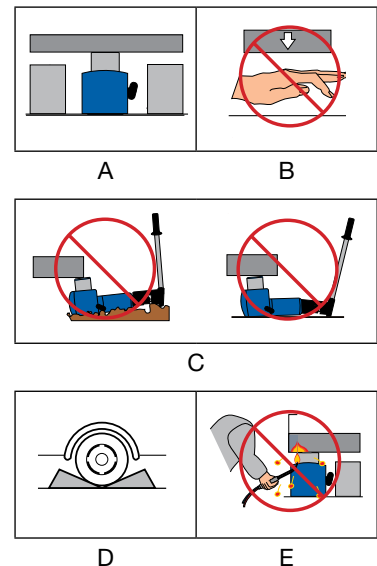


Fig. 1 - Safety Overview

- A.** After lifting is completed, the load must be supported immediately by other appropriate means.
- B.** Do not work under a load supported by hydraulics.
- C.** Lift only on hard, level surface ($\leq 5^\circ$ slope) capable of sustaining the load. Make sure lift point is stable and load is centered on the jack saddle.
- D.** When lifting vehicles, always block tires before lifting load.
- E.** Keep equipment away from flames and heat. Do not weld or modify equipment.

Westward® Low Profile Jacks

Refer to figures 2, 3, 4 and 5 for reference.

Pre Operation

1. Occasionally, hydraulic jacks become air-bound during shipment and will not function properly. To correct this condition:
 - a. Open release valve by turning it counterclockwise about ½ turn. (Do not open release valve more than 1 turn from fully closed.)
 - b. Place handle in handle socket and pump the handle 6-8 full strokes to purge air from hydraulic system.
 - c. Close release valve by turning it fully clockwise. Verify that ram extends smoothly when handle is operated.
2. Thoroughly lubricate all moving parts of the jack. Oil surface of ram as well as all moving parts in the handle and lifting mechanism.
3. Inspect jack before use. Do not use if cracked, broken, or damaged parts are noted.

Operation

LIFTING

1. When lifting vehicles, help prevent inadvertent vehicle movement by fully engaging emergency brake and putting transmission in park. Use wheel chocks in pairs on the wheel diagonally opposed to the wheel or axle lifted.
2. Open release valve by turning it counterclockwise about ½ turn. (Do not open more than 1 turn counterclockwise from fully closed.)
3. Position jack under proper lift point.

IMPORTANT: Position jack linkage and clevis as required, so that these parts do not rub against the ground or other work surface during jack operation. Do not allow jack handle socket to tip jack upward during pumping.

4. Close release valve by turning it fully clockwise.
5. Pump handle until the ram end makes solid contact with the load.
6. Continue pumping until load is raised to desired height. Immediately transfer load to appropriate jack stands or other properly rated device.

⚠WARNING *Off center loads and lifting on unlevel surfaces may damage the jack or cause personal injury. Stop pumping IMMEDIATELY if the maximum stroke indicator line appears.*

LOWERING

1. Open release valve by turning it counterclockwise about ½ turn. (Do not open more than 1 turn counterclockwise from fully closed.)

⚠CAUTION *Avoid "shock loads" created by quickly opening and closing the release valve as load is being lowered. Shock loads may overload the hydraulic circuit and cause damage to the jack.*

2. After lowering, close release valve by turning it fully clockwise.

Maintenance

ADDING OIL

1. Be sure ram is fully lowered and that pump plunger is as far inside the jack as possible.

2. Place a pan under the work area to catch used oil. Dispose of used oil in accordance with applicable laws and regulations.
3. Remove oil fill plug and check ball (not shown - behind plug). It may be necessary to position the oil fill hole downward, so that check ball drops out.
4. Place jack so that oil fill hole is facing up. Add new oil until oil is level with fill hole.

Use only high quality oil of the proper specifications (see Oil Specifications chart, below).
5. Reinstall check ball and oil fill plug.

CHANGING OIL

Periodic oil changes are not required unless it is suspected that the oil is contaminated, or that moisture has entered the system.

LUBRICATION

Periodically lubricate all pivot pins and other moving parts.

RUST PREVENTION

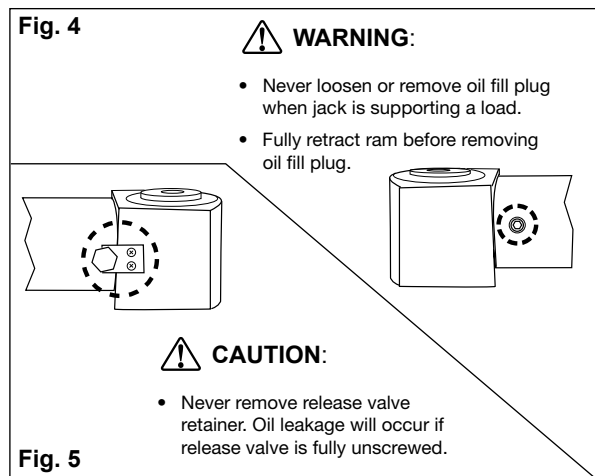
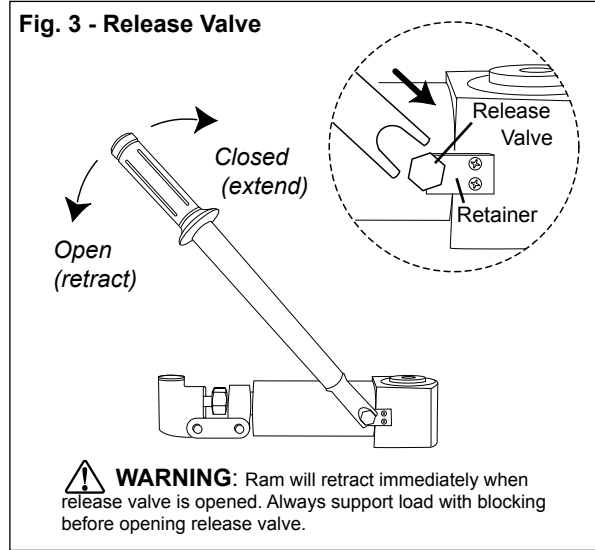
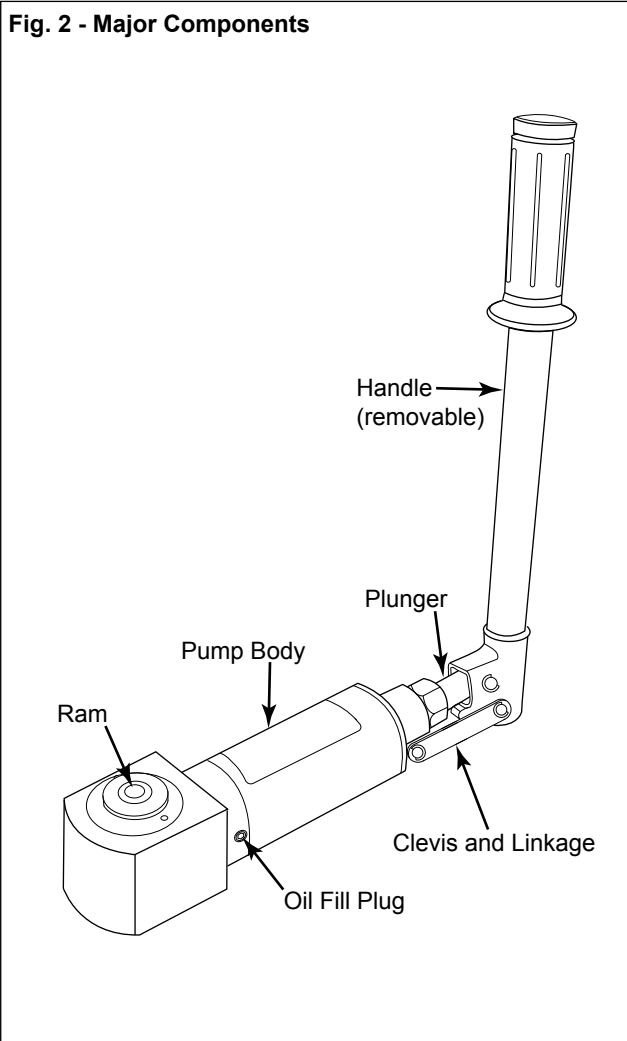
Check ram every 3 months for any sign of rust or corrosion. Clean as needed and wipe with an oil saturated cloth.

NOTE: When not in use, always ensure that the pump plunger is as far inside the jack housing as possible. This will reduce exposure to rusting.

Oil Specifications

Item	Required Value
Viscosity Index	100 min.
Viscosity at 210°F	42 to 45 S.U.S.
Viscosity at 100°F	150 to 165 S.U.S.
Viscosity at 0°F	<12,000 S.U.S.
API Gravity	31.0-33.0
Flash, C.O.C.°F	400
Pour Point, °F	-25
Aniline Point, °F	210-220

IMPORTANT: Use only a good grade hydraulic jack oil and avoid mixing different types of oil. Do not use brake fluid, alcohol, glycerin, motor oil, or dirty oil. Improper fluid can cause serious internal damage to the jack, rendering it inoperative.



Troubleshooting Chart

Symptom	Possible Causes	Corrective Action
Jack will not lift load.	1. Release valve not tightly closed. 2. Overload condition.	1. Ensure release valve is tightly closed. 2. Remedy overload condition.
Jack bleeds off after lift.	Hydraulic components malfunctioning.	See statement at bottom of this chart.
Jack will not lower after unloading.	Release valve not fully open.	Ensure release valve is fully open.
Poor lift performance.	1. Oil level low. 2. Air trapped in system.	1. Add oil as required. 2. With ram fully retracted, remove oil fill plug to let pressurized air escape. Reinstall oil fill plug.
Jack will not lift to full height.	Oil level low.	Ensure proper oil level.

IMPORTANT: This product contains no serviceable components. Disassembly, repair or modification of jack will void warranty.

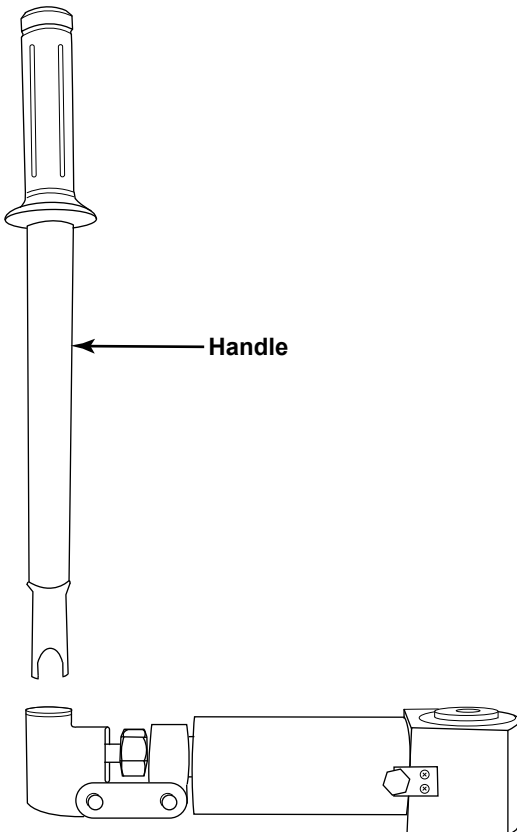
**For Repair Parts, call 1-800-323-0620 (USA, Canada and Mexico)
24 hours a day - 365 days a year**

From Puerto Rico or the American Virgin Islands, please contact your local Grainger branch.

From any other country, visit the Grainger Worldwide website to find the Grainger representative nearest you:
http://www.grainger.com/Grainger/static/int_markets.html

Please provide the following product information when ordering:

- Model number
- Serial number (if any)
- Part description and number as shown in parts list



Parts List - Westward Low Profile Jacks

Jack Model No.	Handle Part No.
3CFK6	TTU092028G
3CFK7	
3CFK8	
3CFK9	
3CFL1	
3CFL2	

Notes:

- The handle is the only repair part available for this product.
- Jack assembly contains no serviceable components or subassemblies.

Fig. 6 - Repair Parts

Westward® Low Profile Jacks

LIMITED WARRANTY

WESTWARD ONE-YEAR LIMITED WARRANTY. Low Profile Jacks, models covered in this manual, are warranted by Westward to the original user against defects in workmanship or materials under normal use for one year after date of purchase. For limited warranty claim procedures, see PROMPT DISPOSITION below. This limited warranty gives purchasers specific legal rights which vary from jurisdiction to jurisdiction.

LIMITATION OF LIABILITY. To the extent allowable under applicable law, Westward's liability for consequential and incidental damages is expressly disclaimed. Westward's liability in all events is limited to and shall not exceed the purchase price paid.

WARRANTY DISCLAIMER. Westward has made a diligent effort to provide product information and illustrate the products in this literature accurately; however, such information and illustrations are for the sole purpose of identification, and do not express or imply a warranty that the products are MERCHANTABLE, or FIT FOR A PARTICULAR PURPOSE, or that the products will necessarily conform to the illustrations or descriptions.

Except as provided below, no warranty or affirmation of fact, expressed or implied, other than as stated in the "LIMITED WARRANTY" above is made or authorized by Westward.

PRODUCT SUITABILITY. Many jurisdictions have codes and regulations governing sales, construction, installation, and/or use of products for certain purposes, which may vary from those in neighboring areas. While Westward attempts to assure that its products comply with such codes, it cannot guarantee compliance, and cannot be responsible for how the product is installed or used. Before purchase and use of a product, review the product applications, and all applicable national and local codes and regulations, and be sure that the product, installation, and use will comply with them.

Certain aspects of disclaimers are not applicable to consumer products; e.g., (a) some jurisdictions do not allow the exclusion or limitation of incidental or consequential damages, so the above limitation or exclusion may not apply to you; (b) also, some jurisdictions do not allow a limitation on how long an implied warranty lasts, consequentially the above limitation may not apply to you; and (c) by law, during the period of this limited warranty, any implied warranties of implied merchantability or fitness for a particular purpose applicable to consumer products purchased by consumers, may not be excluded or otherwise disclaimed.

PROMPT DISPOSITION. Westward will make a good faith effort for prompt correction or other adjustment with respect to any product which proves to be defective within limited warranty. For any product believed to be defective within limited warranty, first write or call dealer from whom the product was purchased. Dealer will give additional directions. If unable to resolve satisfactorily, write to Westward at address below, giving dealer's name, address, date, and number of dealer's invoice, and describing the nature of the defect. Title and risk of loss pass to buyer on deliver to common carrier. If product was damaged in transit to you, file claim with carrier.