

Ø2.0" Pipe Brush

Series 5380-50



Hygienic Euro Thread

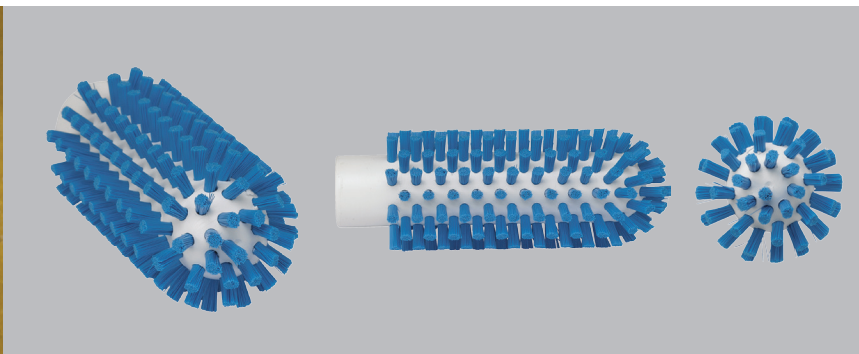
Hygienically designed Euro thread prevents walk-off and is easy to clean



Stiff Bristles

Perfect for scrubbing difficult dirt and for wet use with cleaning agents

This tube brush has bristles along the sides as well as in the front. It is used in areas where a wider tube cleaning action is required or where the equipment has an endpoint that cannot be reached with a hand brush. Requires a European-thread handle. (This part number replaces 53902)



Ø2.0" Pipe Brush

5380-50



Ideal for cleaning wider pipes, the Pipe Brush has stiff bristles for better manual cleaning action. The bristles surround the head of the Pipe Brush, making it a great choice for cleaning pipes that have end points that hand brushes can't reach.

Specifications:

Length: 5.5"

Width: 2"

Height: 2"

FDA-Compliant Raw Material: Yes

Material: Polyester/Polypropylene/SS

Unit Weight: 0.24 lbs.

Bristle Type: Stiff

Colors

When ordering, add the color digit to the base part number to denote color.



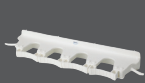
Fully updated product specifications are available at Vikan.com.

The Color-Coding System

Remco and Vikan® brands offer an integrated color-coding system to help mitigate the risk of cross-contamination in food processing facilities. With an array of color-coded tools and storage brackets, and years of experience building effective color-coding systems, the experts at Remco Products Corporation can help you effectively apply color-coding to divide and identify different zones or processing tasks. As a result, workers can more easily comply with material handling and hygienic cleaning procedures to maintain stringent food safety standards.



Please see the full-line catalog for a complete list of Remco™ and Vikan® products.



Brackets



Brooms



Brushes



Shovels



Scrapers



Squeegees



Tubs



Pails

Remco Products Corporation

4735 West 106th Street
Zionsville, Indiana 46077

PHONE: 317.876.9856 | FAX: 800.585.8619

www.remcoproducts.com

