

1.625" Valve Brush

Series 5378



Ergonomic Handle

Smooth, comfortable grip helps prevent hand fatigue

Optimal Bristle Coverage

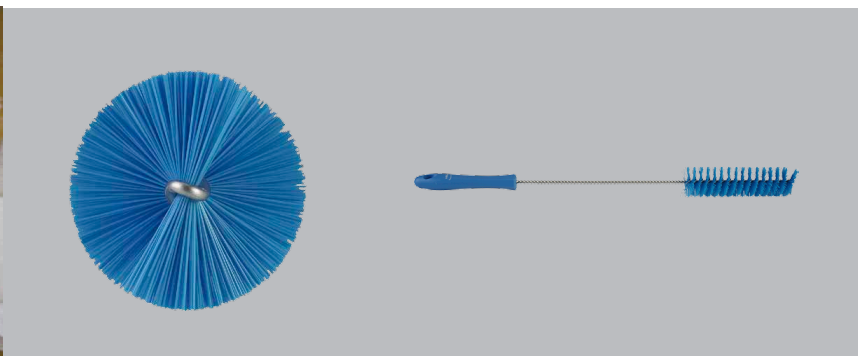
Bristles densely cover the surface being cleaned, but also flex with the shape of the pipe

Helically Wound Shaft

Stainless steel rod is chemically resistant and provides strength



This tube brush with a 1.625 inch diameter is great for cleaning pipes and narrow spaces between machinery.



1.625" Valve Brush

5378



This tube brush has a bristle diameter that works with many commonly-sized pipes and fittings. It is used to clean pipes, tab outlets, and narrow spaces between machine parts. The bristles are attached to a helically wound stainless steel shaft which makes it chemical resistant and strong.

Specifications:

Length: 19.625"

Width: 1.625"

FDA Compliant Raw Material: Yes

Block Material : Polypropylene

Bristle Material : Polyester

Other Material: Stainless Steel

Unit Weight: 0.2 lbs

Colors

When ordering, add the color digit to the base part number to denote color.



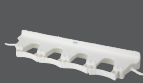
Fully updated product specifications are available at Vikan.com.

The Color-Coding System

Remco and Vikan® brands offer an integrated color-coding system to help mitigate the risk of cross-contamination in food processing facilities. With an array of color-coded tools and storage brackets, and years of experience building effective color-coding systems, the experts at Remco Products Corporation can help you effectively apply color-coding to divide and identify different zones or processing tasks. As a result, workers can more easily comply with material handling and hygienic cleaning procedures to maintain stringent food safety standards.



Please see the full-line catalog for a complete list of Remco™ and Vikan® products.



Brackets



Brooms



Brushes



Shovels



Scrapers



Squeegees



Tubs



Pails

Remco Products Corporation

4735 West 106th Street
Zionsville, Indiana 46077

PHONE: 317.876.9856 | FAX: 800.585.8619

www.remcoproducts.com

