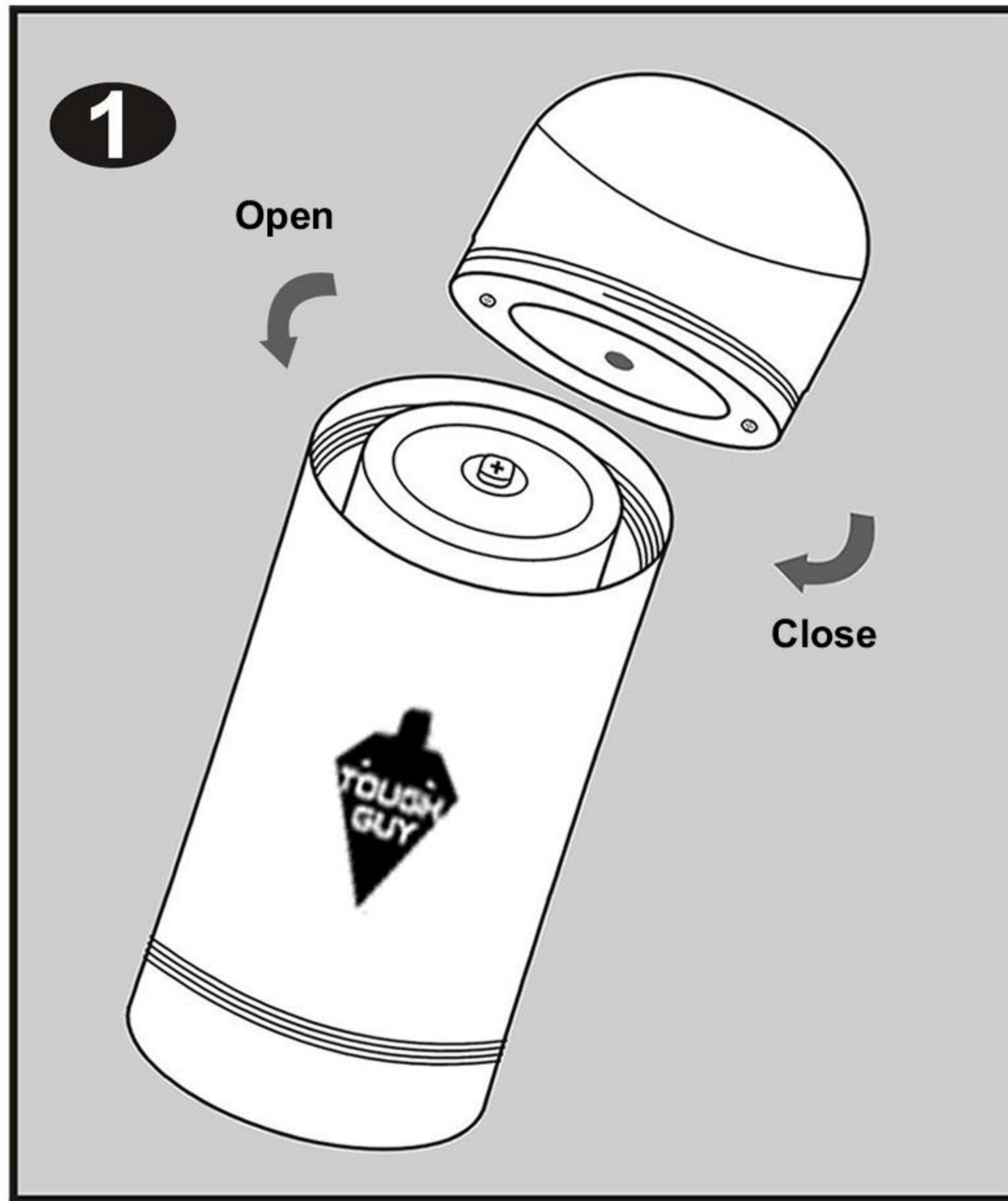
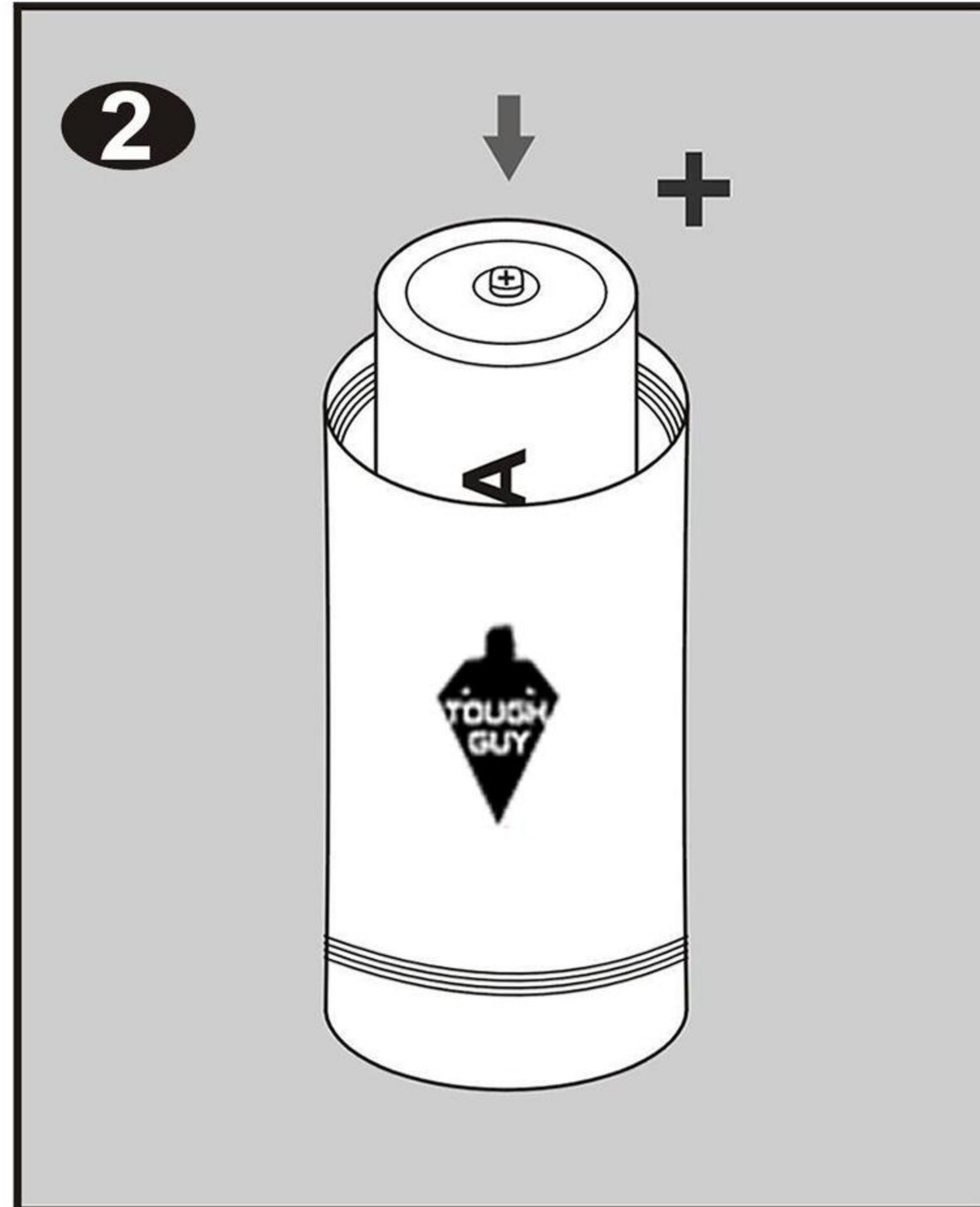




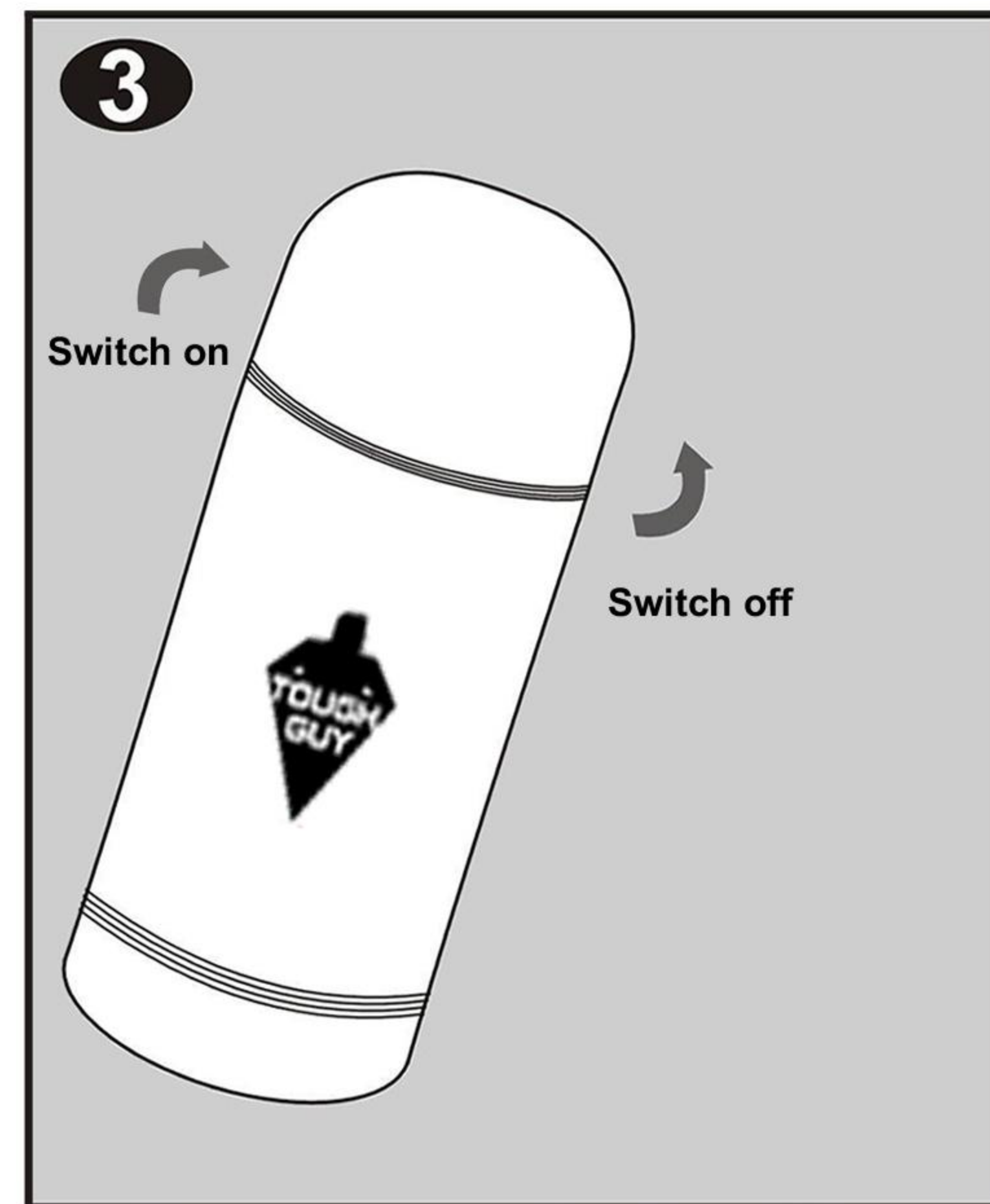
## 2LEC9 – Flashing Hazard Light, for use with Safety Cones.



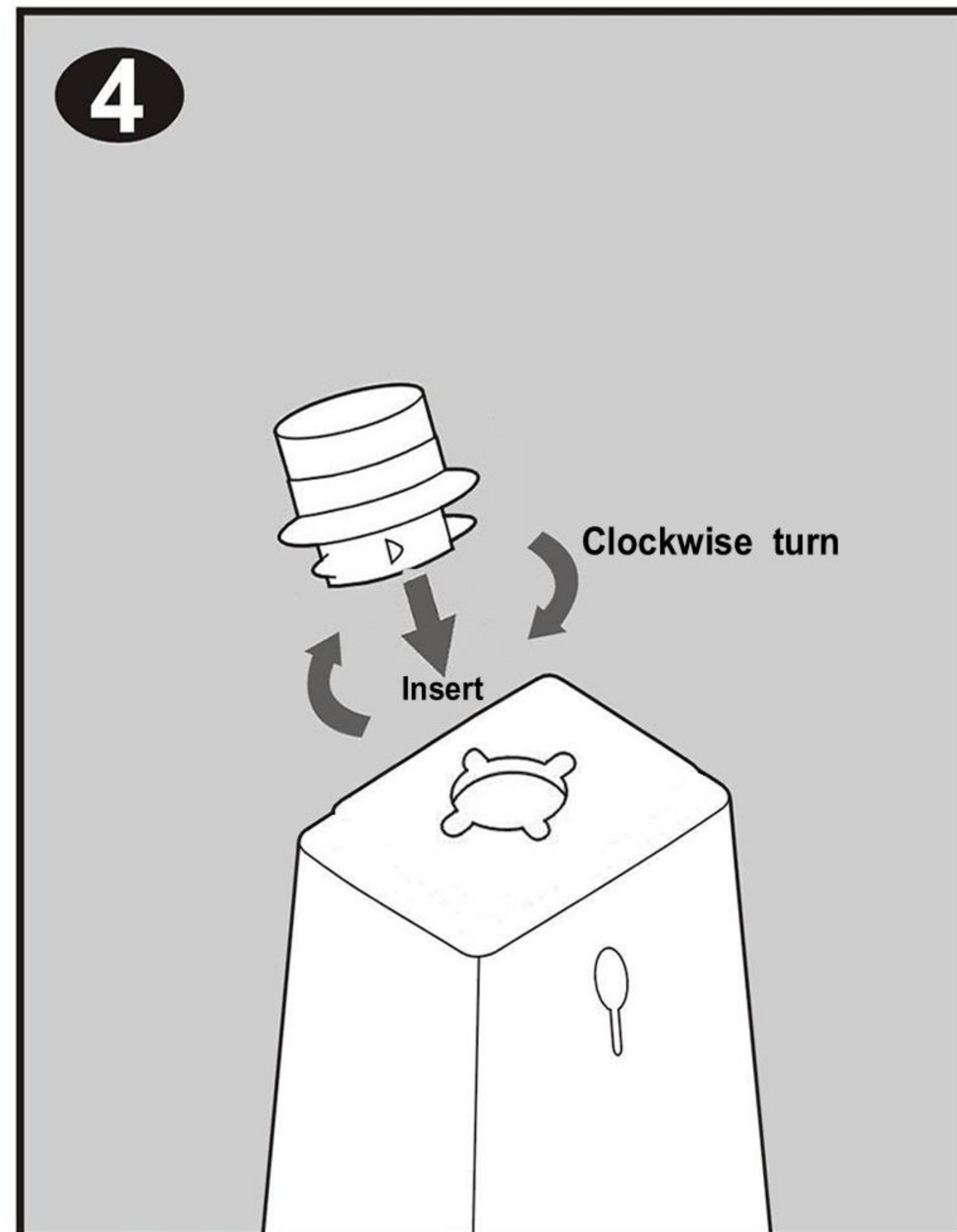
Turn the lens head counter-clockwise to remove it from the battery case. Turn the lens head fully clockwise to secure it in place.



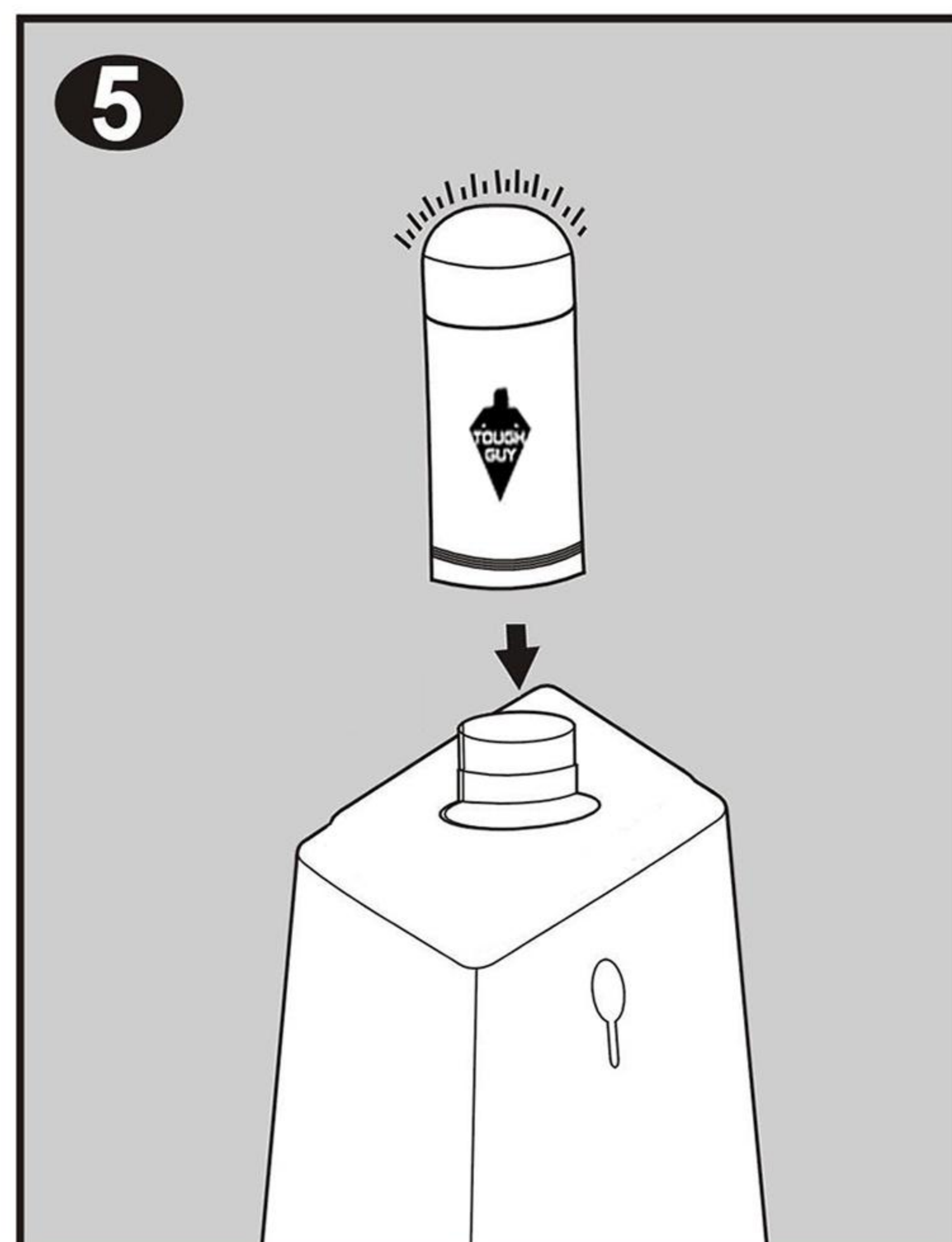
Insert one D size battery into the battery case as shown in the diagram.



Turn the lens head fully clockwise to activate the flashing light. Turn the lens head approximately 1/4 turn counter-clockwise to de-activate the flashing light.



Insert the adapter into the top hole of the cone and turn it approximately 1/4 turn clockwise to lock it into position.



Insert the flashing light into the adapter as shown in the diagram.

