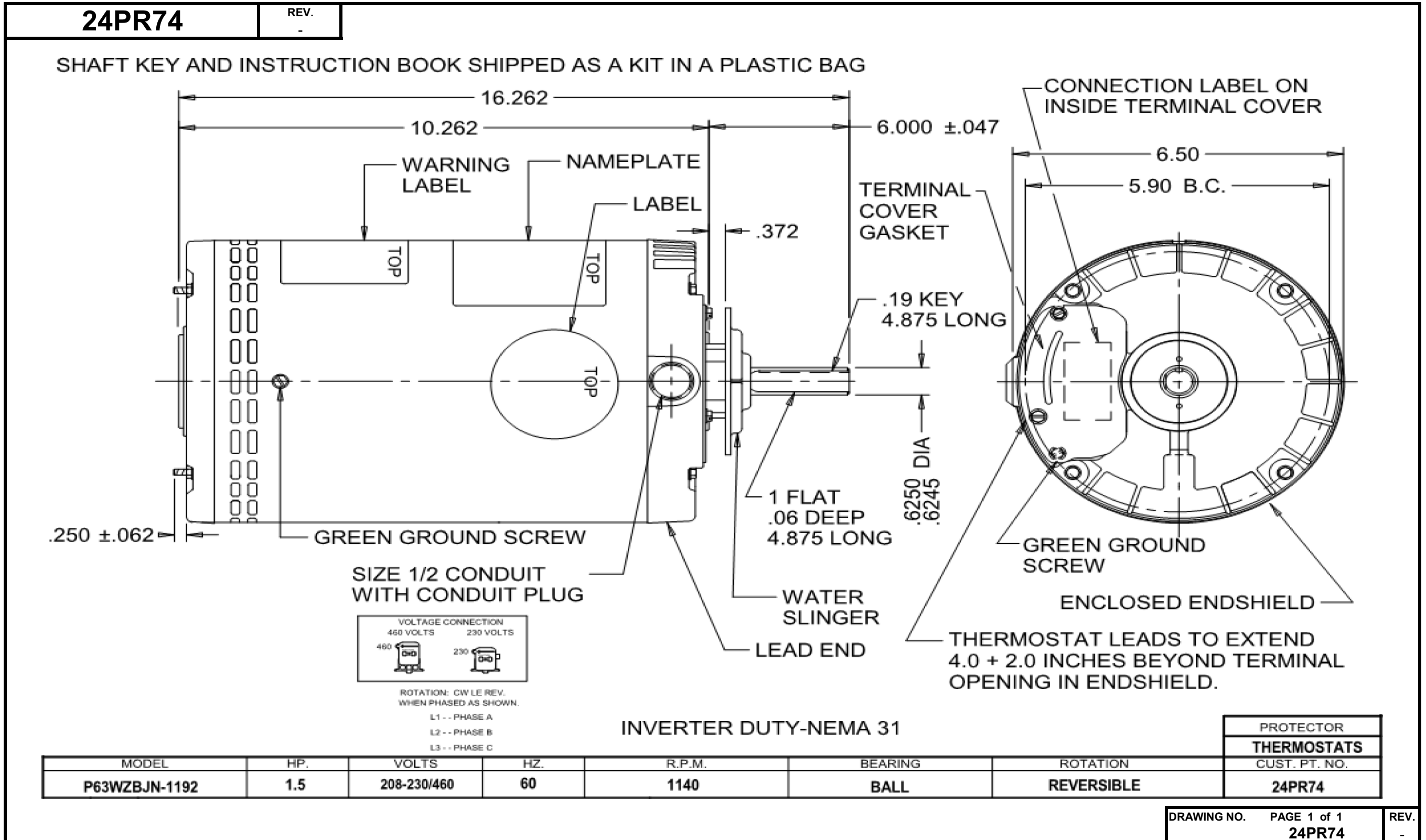


# Dimensional Drawing



**Dayton Electric Mfg. Co. Lake Forest, IL 60045 USA**

# Performance Data



**24PR74**

REV.  
-

## MOTOR PERFORMANCE

<b>HP:</b>	1.5 HP						
<b>Poles:</b>	6P						
<b>No. of Speeds:</b>	1Spd						
<b>Volts:</b>	208-230/460	<b>208</b>	<b>230</b>	<b>460</b>			
<b>HZ:</b>	60	<b>60</b>	<b>60</b>	<b>60</b>			
<b>Service Factor:</b>							
<b>Efficiency:</b>	@ Rated Load	77.9	78.5	78.9			
<b>Power Factor:</b>	@ Rated Load	72.9	67.5	67.1			
<b>Amps:</b>	@ No Load						
	@ Rated Load	5.5	5.3	2.6			
	@ Service Factor	5.5	5.3	2.6			
	@ Locked Rotor	25	28.3	14.2			
<b>RPM:</b>	@ Rated Load	1135	1148	1149			
<b>Ambient (°C):</b>							
<b>Torques:</b>	Breakdown	291.1	370	369.1			
	Locked Rotor	224.2	282.9	281			
	Pull-Up	201.8	254.6	252.6			
	Rated Load	110.5	110.5	110.5			
	Service Factor						
<b>Watts:</b>	Rated Load	1430	1436	1429			
<b>KVA Code:</b>							
<b>Temperature Rise:</b>	@ Rated Load						
	@ Service Factor						
<b>Thermal Protector:</b>	Trip Temp (°C)						
<b>Winding Material:</b>	Start (Auxiliary)				Cu		
	Run (Main)				Cu		
<b>Capacitor(s):</b>	Start (MFD / Volts)				N/A		
	No. of Start Capacitors						
	Run (MFD / Volts)				N/A		
	No. of Run Capacitors						

### PERFORMANCE DATA:

<b>HP:</b>							
<b>Poles:</b>							
<b>Volts:</b>							
<b>HZ:</b>							
<b>Efficiency:</b>	@ Rated Load						
<b>Power Factor:</b>	@ Rated Load						
<b>Amps:</b>	@ No Load						
	@ Rated Load						
	@ Service Factor						
	@ Locked Rotor						
<b>Torques:</b>	@ Rated Load						
	Locked Rotor						
	Pull-Up						
	Rated Load						
	Service Factor						
<b>Watts:</b>	@ Rated Load						
<b>Temperature Rise:</b>	@ Rated Load						
	@ Service Factor						

DRAWING NO. PAGE 1 REV.  
24PR74 -

# Performance Data



**24PR74**      REV.  
-

## Dayton Manufacturing Company

### Motor Description

Model: P063BJN1192  
 Motor ID: 1  
 Poles: 6  
 Volts: 208-230/460  
 Frequency: 60  
 HP: 1.5  
 Speed: 1140  
 Phase: 3  
 Protector:

### Test Conditions

Test Type: Run      Run Cap: 0  
 Test Number: 4      Start Cap: 0μfd  
 Poles: 6      Environment:  
 Volts: 230      Tested: 1/29/2008 1:20:37 PM  
 Hz: 60      Tested By: TestBoard, MTC  
 Rotation:  
 Special Cond:      Gear Ratio: 1:1  
 Speed Conn:      Bearing Friction: 0.00 Oz-Ft  
 TestBoard:      Windage Torque: -1.28 Oz-Ft  
 Amtps Performance      Fixture #1

Special Points	Vab (V)	Vbc (V)	Vca (V)	Ia (A)	Ib (A)	Ic (A)	Watts	RPM	Tq (Oz-ft)	HP	Eff (%)	PF (%)
	229.9	230.4	229.7	3.53	3.49	3.49	171	1196	0.0	0.000	0.0	12.3
	229.8	230.4	229.8	3.72	3.70	3.67	481	1185	25.3	0.357	55.4	32.7
	229.9	230.3	229.8	4.15	4.13	4.08	799	1174	55.5	0.776	72.5	48.7
	229.7	230.5	229.8	4.68	4.67	4.60	1103	1162	82.1	1.136	76.8	59.6
	229.8	230.4	229.8	5.31	5.32	5.21	1410	1149	108.8	1.488	78.8	67.0
1.5 HP	229.8	230.5	229.8	5.34	5.35	5.25	1423	1149	109.7	1.500	78.6	67.2
110.5 OZ-FT	229.8	230.5	229.8	5.37	5.38	5.27	1436	1148	110.5	1.511	78.5	67.5
	229.8	230.4	229.8	6.04	6.06	5.92	1722	1136	134.0	1.812	78.5	72.0
	229.8	230.5	229.8	6.86	6.88	6.73	2052	1121	160.3	2.139	77.8	75.5
	229.7	230.6	229.7	7.74	7.75	7.58	2383	1105	186.3	2.452	76.7	77.8
	229.8	230.6	229.6	8.67	8.69	8.46	2715	1088	210.6	2.729	75.0	79.2
	229.9	230.6	229.5	9.67	9.71	9.44	3059	1069	236.1	3.006	73.3	80.0
	230.1	230.1	229.8	10.66	10.78	10.44	3396	1048	257.6	3.213	70.6	80.2
	230.0	230.2	229.8	11.72	11.88	11.50	3748	1026	281.2	3.436	68.4	80.4
	230.1	230.1	229.8	12.92	13.09	12.73	4119	998	301.7	3.585	64.9	80.1
	230.1	230.1	229.8	14.12	14.29	13.90	4446	972	321.8	3.725	62.5	79.1
	230.0	230.1	229.9	15.09	15.28	14.87	4722	945	332.8	3.746	59.2	78.6
	230.1	230.1	229.9	16.21	16.43	15.96	5006	914	342.6	3.726	55.5	77.6
	230.2	230.1	229.7	17.39	17.59	17.07	5277	878	354.9	3.711	52.5	76.4
	230.2	230.1	229.7	18.56	18.78	18.23	5538	838	362.8	3.621	48.8	75.0
	230.2	230.2	229.7	19.61	19.84	19.25	5743	798	362.9	3.446	44.8	73.7
BDT OZ-FT	230.2	230.1	229.7	20.45	20.68	20.08	5894	762	369.9	3.357	42.5	72.5
	230.2	230.2	229.7	20.64	20.88	20.27	5931	753	365.7	3.280	41.3	72.3
	230.2	230.1	229.7	21.64	21.89	21.26	6089	705	358.8	3.010	36.9	70.8
	230.1	230.1	229.7	22.60	22.87	22.20	6225	652	358.3	2.781	33.3	69.3
	230.2	230.1	229.7	23.42	23.74	23.05	6317	597	348.7	2.478	29.3	67.8
	230.2	230.1	229.8	24.25	24.58	23.83	6387	537	341.0	2.180	25.5	66.2
	230.1	230.1	229.8	24.99	25.29	24.55	6455	474	330.6	1.865	21.6	65.0
	230.2	230.1	229.8	25.68	25.98	25.22	6489	406	319.6	1.545	17.8	63.6
	230.1	230.1	229.8	26.32	26.63	25.84	6525	335	307.5	1.225	14.0	62.4
	230.1	230.1	229.8	26.90	27.21	26.41	6531	257	293.7	0.899	10.3	61.1
	230.0	230.1	229.9	27.42	27.71	26.94	6545	176	282.7	0.591	6.7	60.0
	230.1	230.1	229.8	27.84	28.16	27.36	6518	91	275.9	0.298	3.4	58.9
	230.1	230.1	229.7	28.34	28.54	27.74	6532	13	282.9	0.045	0.5	58.1

DRAWING NO.      PAGE 1 of 4      REV.  
 24PR74      -





# Performance Data

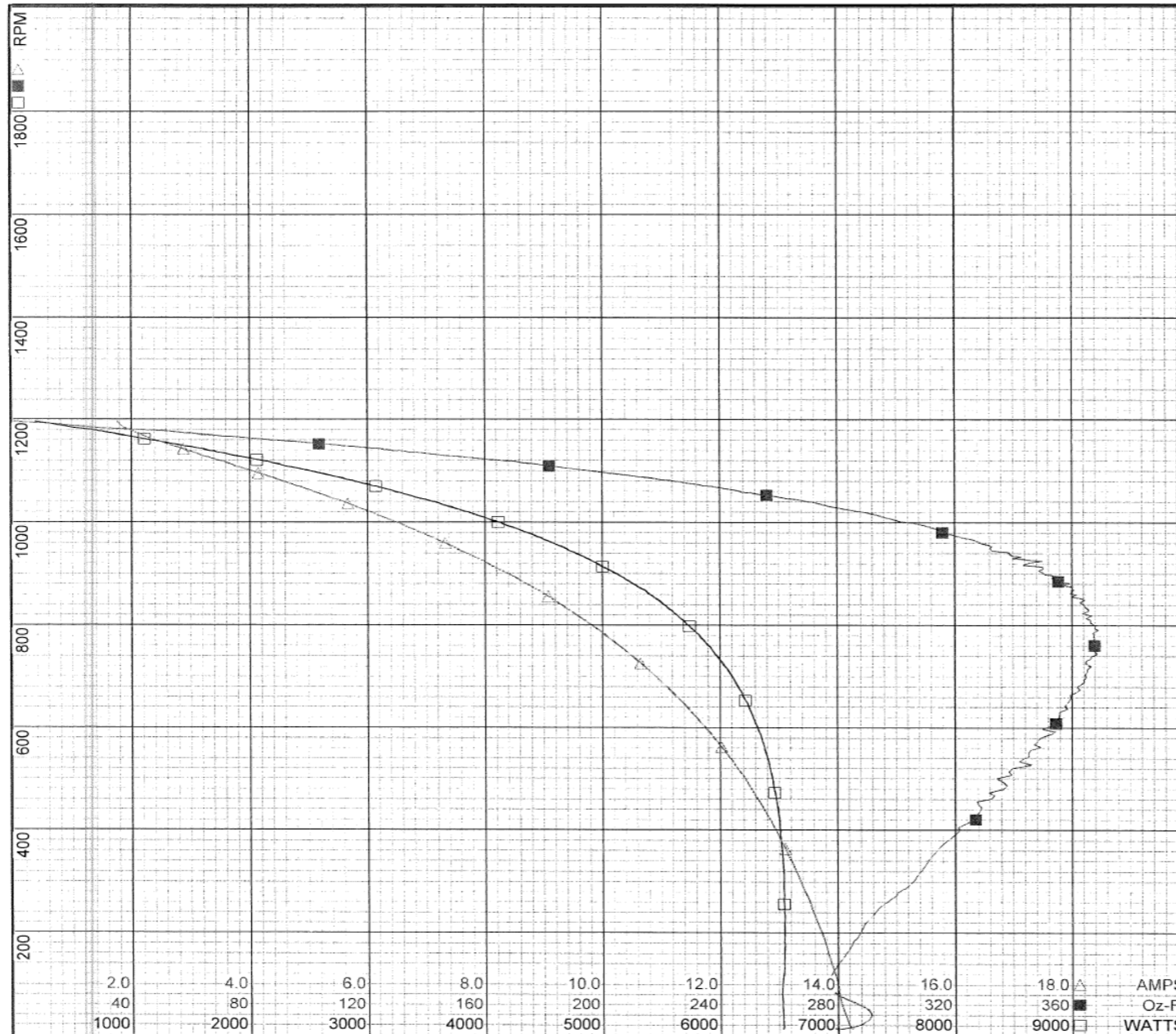


24PR74		REV.	Dayton Manufacturing Company									
Motor Description			Test Conditions									
Model:	P063BJN1192		Test Type:	Run			Run Cap:	0				
Motor ID:	1		Test Number:	27			Start Cap:	0μfd				
Poles:	6		Poles:	6			Environment:					
Volts:	208-230/460		Volts:	460			Tested:	1/29/2008 2:12:25 PM				
Frequency:	60		Hz:	60			Tested By:	TestBoard, MTC				
HP:	1.5		Rotation:				Gear Ratio:	1:1				
Speed:	1140		Special Cond:				Bearing Friction:	0.00 Oz-Ft				
Phase:	3		Speed Conn:				Windage Torque:	-1.60 Oz-Ft				
Protector:			TestBoard:	Amps Performance Fixture #1								
Special Points	Vab (V)	Vbc (V)	Vca (V)	Ia (A)	Ib (A)	Ic (A)	Watts	RPM	Tq (Oz-ft)	HP	Eff (%)	PF (%)
	459.9	460.5	459.6	1.764	1.762	1.735	181	1196	0.0	0.000	0.0	13.0
	459.8	460.5	459.7	1.862	1.870	1.832	488	1185	25.9	0.365	55.8	33.0
	459.8	460.5	459.7	2.081	2.093	2.042	806	1174	56.9	0.795	73.6	48.8
	459.8	460.5	459.7	2.352	2.371	2.307	1110	1162	83.2	1.151	77.3	59.5
1.5 HP	459.7	460.6	459.7	2.659	2.683	2.609	1409	1150	109.6	1.500	79.4	66.7
	459.7	460.6	459.7	2.660	2.684	2.610	1410	1150	109.7	1.501	79.4	66.7
110.5 OZ-FT	459.8	460.5	459.7	2.681	2.705	2.631	1429	1149	110.5	1.511	78.9	67.1
	459.8	460.5	459.7	3.030	3.062	2.971	1727	1135	134.3	1.816	78.5	71.7
	459.8	460.7	459.6	3.443	3.478	3.375	2063	1121	161.7	2.158	78.1	75.4
	459.8	460.5	459.7	3.865	3.912	3.795	2386	1105	186.8	2.458	76.8	77.6
	459.7	460.5	459.8	4.331	4.387	4.259	2724	1088	212.1	2.747	75.2	79.0
	459.7	460.5	459.8	4.840	4.898	4.768	3072	1070	237.3	3.023	73.4	79.7
	459.9	460.5	459.6	5.360	5.424	5.271	3411	1048	261.0	3.256	71.2	80.0
	459.9	460.5	459.6	5.889	5.963	5.792	3751	1026	281.8	3.442	68.5	80.0
	459.9	460.5	459.6	6.498	6.580	6.395	4113	1000	303.6	3.614	65.6	79.5
	459.8	460.6	459.5	7.013	7.104	6.906	4415	975	319.7	3.710	62.7	79.1
	459.9	460.6	459.6	7.577	7.675	7.465	4719	944	333.0	3.744	59.2	78.2
	459.9	460.6	459.5	8.140	8.238	8.008	5004	914	350.2	3.809	56.8	77.3
	460.1	460.4	459.6	8.734	8.849	8.591	5283	878	356.8	3.728	52.6	76.0
	460.1	460.1	459.8	9.273	9.422	9.133	5520	840	364.1	3.640	49.2	74.7
	460.3	460.0	459.7	9.833	9.992	9.659	5742	798	368.1	3.496	45.4	73.3
BDT OZ-FT	460.3	459.9	459.8	9.938	10.101	9.756	5777	789	369.1	3.468	44.8	73.0
	460.2	459.9	459.8	10.371	10.538	10.185	5931	752	367.4	3.288	41.4	71.8
	460.2	460.0	459.8	10.866	11.041	10.678	6090	704	364.4	3.054	37.4	70.4
	460.2	460.0	459.7	11.325	11.503	11.127	6215	653	358.9	2.790	33.5	68.9
	460.3	460.0	459.8	11.769	11.952	11.558	6321	597	349.8	2.488	29.4	67.5
	460.2	460.0	459.8	12.181	12.370	11.968	6404	538	343.3	2.199	25.6	66.0
	460.2	460.1	459.7	12.567	12.759	12.353	6464	473	331.5	1.865	21.5	64.6
	460.2	460.0	459.8	12.909	13.100	12.690	6504	405	321.2	1.549	17.8	63.3
	460.2	460.0	459.8	13.224	13.422	12.996	6531	336	310.4	1.240	14.2	62.0
	460.2	460.0	459.8	13.529	13.726	13.295	6541	256	296.0	0.903	10.3	60.7
	460.1	460.1	459.8	13.792	13.981	13.546	6546	176	284.8	0.596	6.8	59.7
	460.2	460.0	459.8	14.011	14.210	13.762	6523	90	277.5	0.297	3.4	58.5
	460.2	460.0	459.8	14.233	14.384	13.987	6532	12	281.0	0.039	0.5	57.7

# Performance Data



**24PR74**      REV.  
-



**Dayton**

Curve Descriptions:  
Motor(1) Test 27 Run 460V 60 Hz 6P

- SPEED vs WATTS
- SPEED vs TORQUE
- △ SPEED vs Ia

Motor Ratings:  
P063BJN1192 ID: 1

2.0      4.0      6.0      8.0      10.0      12.0      14.0      16.0      18.0      △      AMPS  
 40      80      120      160      200      240      280      320      360      ■      Oz-Ft  
 1000      2000      3000      4000      5000      6000      7000      8000      9000      □      WATTS

DRAWING NO.      PAGE 4 of 4      REV.  
24PR74      -

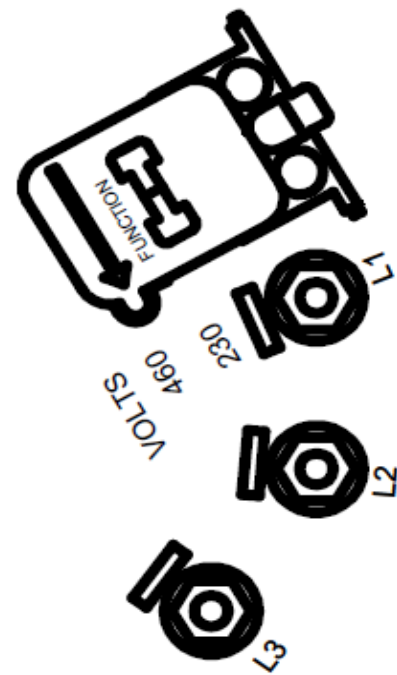
**Dayton Electric Mfg. Co. Lake Forest, IL 60045 USA**

24PR74

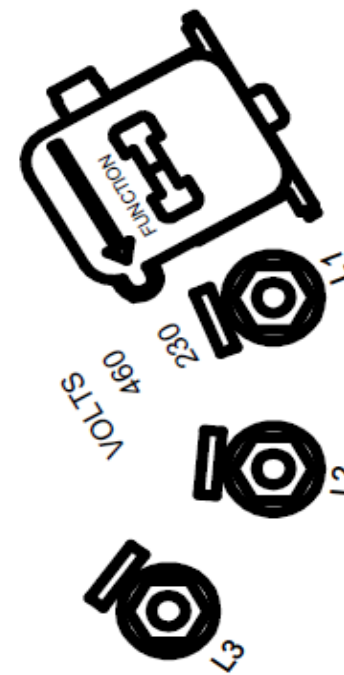
REV.  
-

## CONNECTIONS

460 VOLTS



230 VOLTS



(2) BLACK LEADS - THERMOSTAT  
TO REVERSE ROTATION INTERCHANGE  
ANY TWO LINE LEADS

DRAWING NO.	PAGE 1 of 1	REV.
24PR74		-

**Dayton**<sup>®</sup>Part No **24PR74****CONDENSER  
FAN MOTOR****HP: 1.5****PH: 3****VOLTS: 208-230/460****HZ: 60****AMPS: 5.3-5.3/2.6****FR: 56YZ****RPM: 1140****INS CL: F****DUTY: CONT****AMB: 70 °C****SF: 1.0****SFA:****KVA CODE: H****ENCL: OPAO****MTR REF: P63WZBJN-1192****THERMOSTATS**PROT. CODE:  7A073  MFG. NO.  **S.F. AT 208 VOLTS IS 1.0****Disconnect Power Before Making  
Any Electrical Connections or Changes****CONNECTIONS****460 VOLTS****230 VOLTS****(2) BLACK LEADS - THERMOSTAT  
TO REVERSE ROTATION INTERCHANGE  
ANY TWO LINE LEADS**

258501



E47479

Mfd for Dayton Electric Mfg. Co., Lake Forest, IL 60045 USA

Made in Mexico