



Flat Head Countersunk Socket Screws

Flat Head Countersunk Socket Screws are manufactured from high grade alloy steel and held to exacting tolerances to ensure the highest degree of dimensional uniformity. Flat Heads are most commonly used for the fastening of plates, strips, moldings and other thin section parts.

PRODUCT ATTRIBUTES

Flush mounting that enhances the appearance of the product on which they are used.

Closely controlled threads mean tighter, more secure fits, and stronger assemblies.

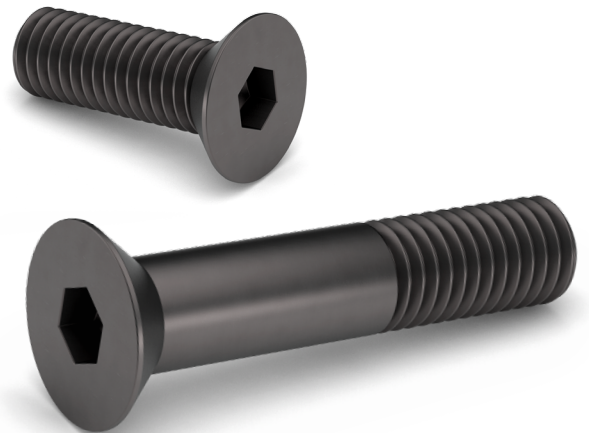
Deep, accurate socket for uniform wrenching power and high maximum torques.

WHERE YOU WILL FIND OPPORTUNITY

Machine Building	Robotics & Automation
Stamping Presses	Mold Making
Tools Assembly	Heavy Machinery
Conveyer Systems	Electronics

THIS PRODUCT IS OFTEN CALLED...

Flat Head Screw
Flat Head Socket Screw
Countersunk Screw



ADDITIONAL SOCKET PRODUCTS WE SUPPLY

Socket Head Cap Screws
Socket Low Head Cap Screws
Socket Head Shoulder Screws
Button Head Socket Screws
Flange Button Head Socket Screws
Hardened Ground Machine Dowel Pins
Socket Set Screws
Hexagon Wrenches
Taper Pressure Plugs
Pull Out Dowel Pins

AVAILABLE VALUE ADDED SERVICES

Cross drilling and center drilling

BACKED BY THE EARNEST
Service
GUARANTEE

**The right part.
The right quantity.
On time.
Every time.**

FLAT HEAD COUNTERSUNK SOCKET SCREWS

Flat Head Countersunk Socket Screws are manufactured in accordance with the latest revision of the following industry standards:

- ASME B18.3** Dimensional Requirements
- ASTM F835** Material and Strength Level
- ASME B1.1** Thread Requirements
- ASTM F788** Surface Discontinuities
- ASME B18.18** Inspection and Quality Assurance

THREADS

Thread acceptance per ASME B1.3 System 21

Thread requirements per ASME B1.1 Class 3A

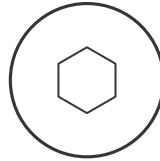
PLATING

Black Oxide

*The specifications shown on this sheet are not intended to be used in the production of parts. Earnest Machine is not responsible or liable in any manner for any production errors and we certify the information present on this specification sheet is correct to the best of our knowledge. ©2022 Earnest Machine Products

MATERIAL AND PHYSICAL PROPERTIES

Alloy Steel



Chemical Composition

CARBON (C)		PHOSPHORUS (P)	SULFUR (S)
Min	Max	Max	Max
0.30	0.48	0.035	0.040

Alloy Steel

CONTAINS ONE OF THE FOLLOWING ALLOYS

Mn, Cr, Mo, Ni, V

Hardness Level

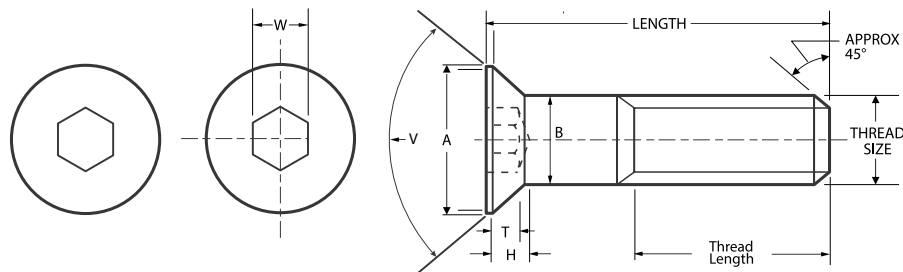
ROCKWELL HARDNESS

HRC 37/44

Tensile Strength

135,000 psi min

DIMENSIONS FOR FLAT HEAD COUNTERSUNK SOCKET SCREWS



SIZE NOMINAL	THREAD PITCH		HEAD DIAMETER (A)		BODY DIAMETER (B)		SOCKET SIZE (W)	HEAD HEIGHT (H)	SOCKET DEPTH (T)	THREAD LENGTH	HEAD ANGLE (V)
	UNC	UNF	MAX	MIN	MAX	MIN	NOM.	MAX	MIN	MIN	DEGREES
3/4	10	16	1.438	1.355	0.750	0.7406	1/2	0.396	0.220	2	82
7/8	9	14	1.688	1.604	0.875	0.8647	9/16	0.468	0.248	2.25	82

Thread Length

SIZE	THREAD	THREAD LENGTH (MIN)
3/4 - 10 x 4	Partial	2.000
7/8 - 9 x 3	Full	2.250
7/8 - 9 x 3 1/2	Full	2.750
7/8 - 9 x 4	Partial	2.250

Torque Tightening

THREAD SIZE	INSTALLATION TORQUE	TENSILE LOAD - MIN
Nominal	UNRC	UNRC
3/4	267	45,100
7/8	450	62,370