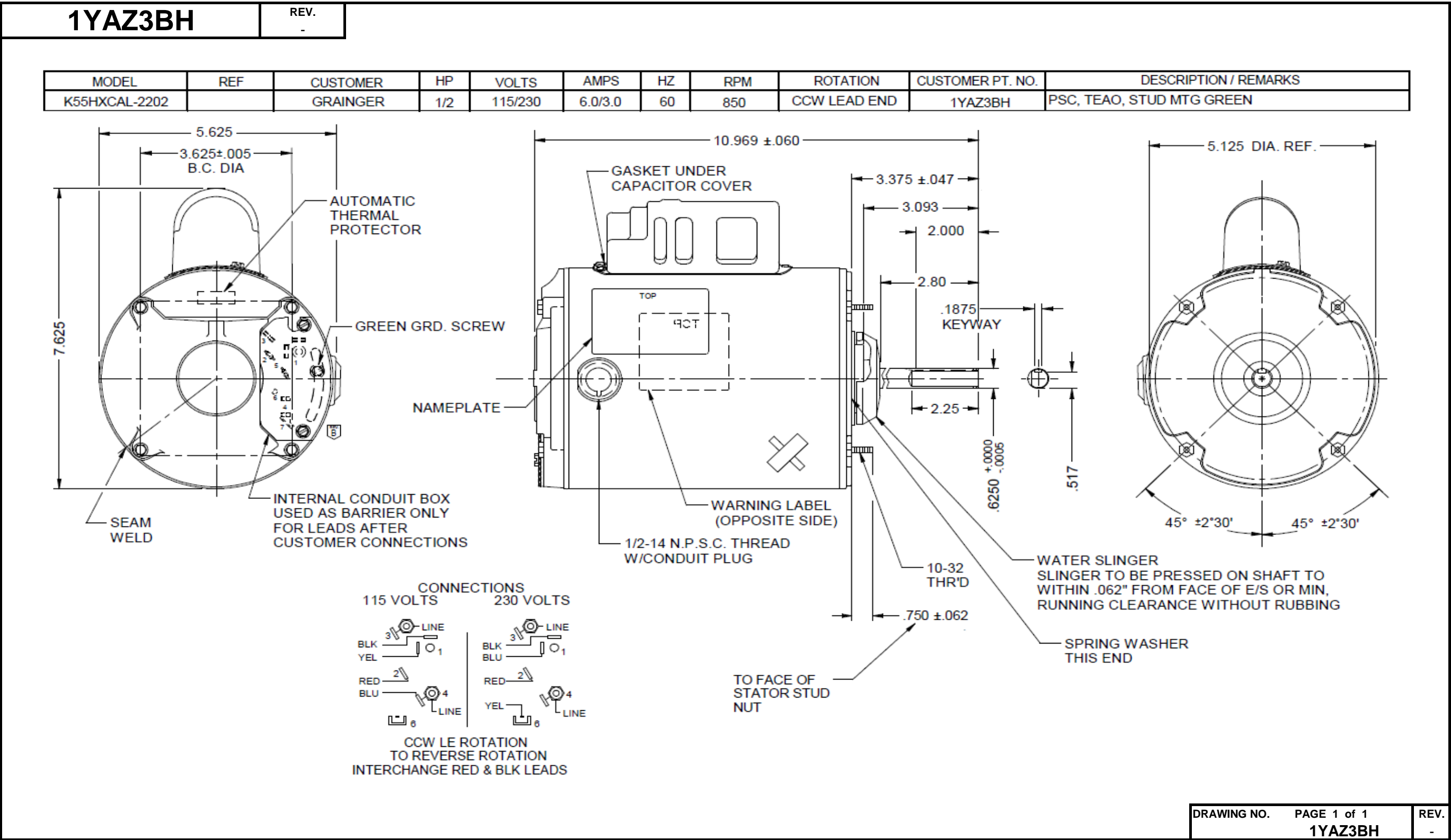


Dimensional Drawing



1YAZ3BH

REV.

-

SHADED-POLE & PSC MOTOR PERFORMANCE

HP:	1/2							
Poles:	8							
Ambient (°C):	40							
Altitude (FASL):								
No. of Speeds:	1							
HIGH SPEED								
Volts:	115/230	115	230					
HZ:	60	60	60					
Service Factor:	1.25							
Efficiency:	@ Rated Load	63.6	62.8					
Power Factor:	@ Rated Load	89.6	89.9					
Amps:	@ No Load							
	@ Rated Load	5.7	2.8					
	@ Locked Rotor	16.2	8.1					
RPM:	@ Rated Load	850	850					
Torques:	Breakdown	74.06	74.4					
	Locked Rotor	13.3	14.5					
	Pull-Up	8.4	9.3					
	Rated Load	49.4	49.4					
	Service Factor	63.6	63.6					
Watts:	Rated Load	588.3	594					
Temperature Rise:	@ Rated Load	TEAO	TEAO					
Thermal Protector:	Trip Temp (°C)	NA	NA					
Winding Material:	Start (Auxiliary)	Cu	Cu					
	Run (Main)	Cu	Cu					
Capacitor(s):	Run (MFD / Volts)	30 mFd, 370 V						
	No. of Run Capacitors							

MEDIUM-HIGH SPEED

HP:								
Volts:								
HZ:								
Efficiency:	@ Rated Load							
Power Factor:	@ Rated Load							
Amps:	@ No Load							
	@ Rated Load							
	@ Locked Rotor							
Torques:	Breakdown							
	Locked Rotor							
	Pull-Up							
	Rated Load							
Watts:	@ Rated Load							
Temperature Rise:	@ Rated Load							

 DRAWING NO. PAGE 1 of 2
 1YAZ3BH

 REV.
 -

1YAZ3BH

REV.

-

SHADED-POLE & PSC MOTOR PERFORMANCE

MEDIUM-LOW SPEED

HP:									
Volts:									
HZ:									
Efficiency:	@ Rated Load								
Power Factor:	@ Rated Load								
Amps:	@ No Load								
	@ Rated Load								
Torques: Oz.Ft. / Lb.In. (Circle One)	Breakdown								
	Locked Rotor								
	Pull-Up								
	Rated Load								
Watts:	Rated Load								
Temperature Rise:	@ Rated Load								
Thermal Protector:	Trip Temp (°C)								
Winding Material:	Start (Auxiliary)								
	Run (Main)								

LOW SPEED

HP:									
Volts:									
HZ:									
Efficiency:	@ Rated Load								
Power Factor:	@ Rated Load								
Amps:	@ No Load								
	@ Rated Load								
Torques: Oz.Ft. / Lb.In. (Circle One)	Breakdown								
	Locked Rotor								
	Pull-Up								
	Rated Load								
Watts:	Rated Load								
Temperature Rise:	@ Rated Load								

Notes:

DRAWING NO. PAGE 2 of 2
1YAZ3BH

REV.
-

Performance Data



1YAZ3BH				REV. -										
Dayton Manufacturing Company														
Motor Description				Test Conditions										
Model: K055CAL2202012E 1YAZ3BG				Test Type: Start		Run Cap: 30ufd 370V								
Motor ID: motor 1				Test Number: 1		Start Cap: 0ufd								
Poles: 8				Poles: 8		Environment:								
Volts: 230/115				Volts: 115		Tested: 3/1/2010 9:41:36 AM								
Frequency: 60				Hz: 60		Tested By: Sharp, Gerald								
HP: 1/2				Rotation:		Gear Ratio: 1:1								
Speed: 825				Special Cond:		Bearing Friction: -0.88 Oz-Ft								
Phase: 1				Speed Conn:		Windage Torque: -2.71 Oz-Ft								
Protector: 7AM036A5				TestBoard: Amps Performance		Fixture #3								
Special Points		Vline(V)	Vaux(V)	Vcap(V)	Iline(A)	Imain(A)	Iaux(A)	Watts	RPM	Tq(Oz-ft)	HP	Eff (%)	PF (%)	Cap
		115.0	31.8	136.9	16.176	17.107	1.545	1292.6	1	13.32	0.000	0.0	69.5	29.9
		115.0	31.7	136.2	16.175	17.099	1.538	1296.0	16	12.52	0.002	0.1	69.7	29.9
		115.0	30.9	133.0	16.089	16.972	1.501	1287.4	91	10.79	0.012	0.7	69.6	29.9
PUT	OZ-FT	115.0	31.6	130.4	16.053	16.889	1.471	1290.9	160	8.40	0.016	0.9	69.9	29.9
		115.0	31.6	130.1	16.054	16.883	1.468	1291.7	166	8.44	0.017	1.0	70.0	29.9
		115.0	33.8	127.9	15.963	16.733	1.444	1293.7	238	11.36	0.032	1.9	70.5	29.9
		115.0	36.8	126.6	15.801	16.513	1.430	1295.4	303	15.78	0.057	3.3	71.3	30.0
		115.0	40.2	125.2	15.615	16.262	1.414	1295.3	363	20.70	0.090	5.2	72.1	30.0
		115.0	44.4	123.8	15.392	15.966	1.401	1294.4	415	26.05	0.129	7.4	73.1	30.0
		115.0	49.0	123.1	15.109	15.609	1.393	1287.7	464	31.86	0.176	10.2	74.1	30.0
		115.0	53.7	122.5	14.792	15.212	1.386	1279.0	508	37.67	0.228	13.3	75.2	30.0
		115.0	59.1	122.5	14.440	14.775	1.385	1267.6	549	43.33	0.283	16.7	76.3	30.0
		115.0	64.9	123.1	14.049	14.298	1.392	1253.7	586	48.72	0.340	20.2	77.6	30.0
		115.0	71.2	124.4	13.617	13.774	1.407	1236.6	620	53.79	0.397	24.0	79.0	30.0
		115.0	77.7	126.4	13.148	13.209	1.430	1214.1	651	58.96	0.457	28.1	80.3	30.0
		115.0	84.8	129.0	12.630	12.589	1.463	1187.1	679	63.92	0.517	32.5	81.7	30.1
		115.0	91.9	132.6	12.098	11.962	1.503	1155.5	705	67.51	0.566	36.6	83.1	30.1
		115.0	99.3	137.1	11.515	11.276	1.555	1116.0	727	69.35	0.600	40.1	84.3	30.1
		115.0	107.1	142.5	10.869	10.527	1.616	1068.9	748	71.07	0.633	44.2	85.5	30.1
		115.0	115.1	148.5	10.189	9.753	1.687	1016.8	767	72.56	0.663	48.6	86.8	30.1
		115.0	122.7	154.8	9.522	9.013	1.761	960.7	784	71.42	0.666	51.7	87.7	30.2
		115.0	130.4	161.4	8.847	8.249	1.840	904.3	800	70.35	0.670	55.2	88.9	30.2
		115.0	137.7	168.9	8.142	7.493	1.923	835.3	813	66.94	0.648	57.9	89.2	30.2
		115.0	145.4	176.7	7.384	6.687	2.013	762.4	826	62.89	0.618	60.5	89.8	30.2
		115.0	152.4	184.0	6.688	5.976	2.098	691.8	837	57.13	0.569	61.4	89.9	30.2
		115.0	159.2	192.1	5.988	5.323	2.190	615.2	849	50.84	0.514	62.3	89.3	30.2
		115.0	165.1	199.3	5.375	4.791	2.275	545.9	857	43.82	0.447	61.1	88.3	30.3
		115.0	174.5	210.0	4.611	4.215	2.389	458.2	868	34.20	0.354	57.6	86.4	30.2
		115.0	183.8	220.5	4.070	4.007	2.497	381.1	878	23.59	0.247	48.3	81.4	30.0
		115.0	191.1	228.3	3.539	3.947	2.575	294.7	886	11.82	0.125	31.5	72.4	29.9
		115.0	195.0	234.0	3.122	4.099	2.641	206.6	896	0.00	0.000	0.0	57.5	29.9
DRAWING NO. PAGE 1 of 8												REV.		
1YAZ3BH												-		

Dayton Electric Mfg. Co. Lake Forest, IL 60045 USA

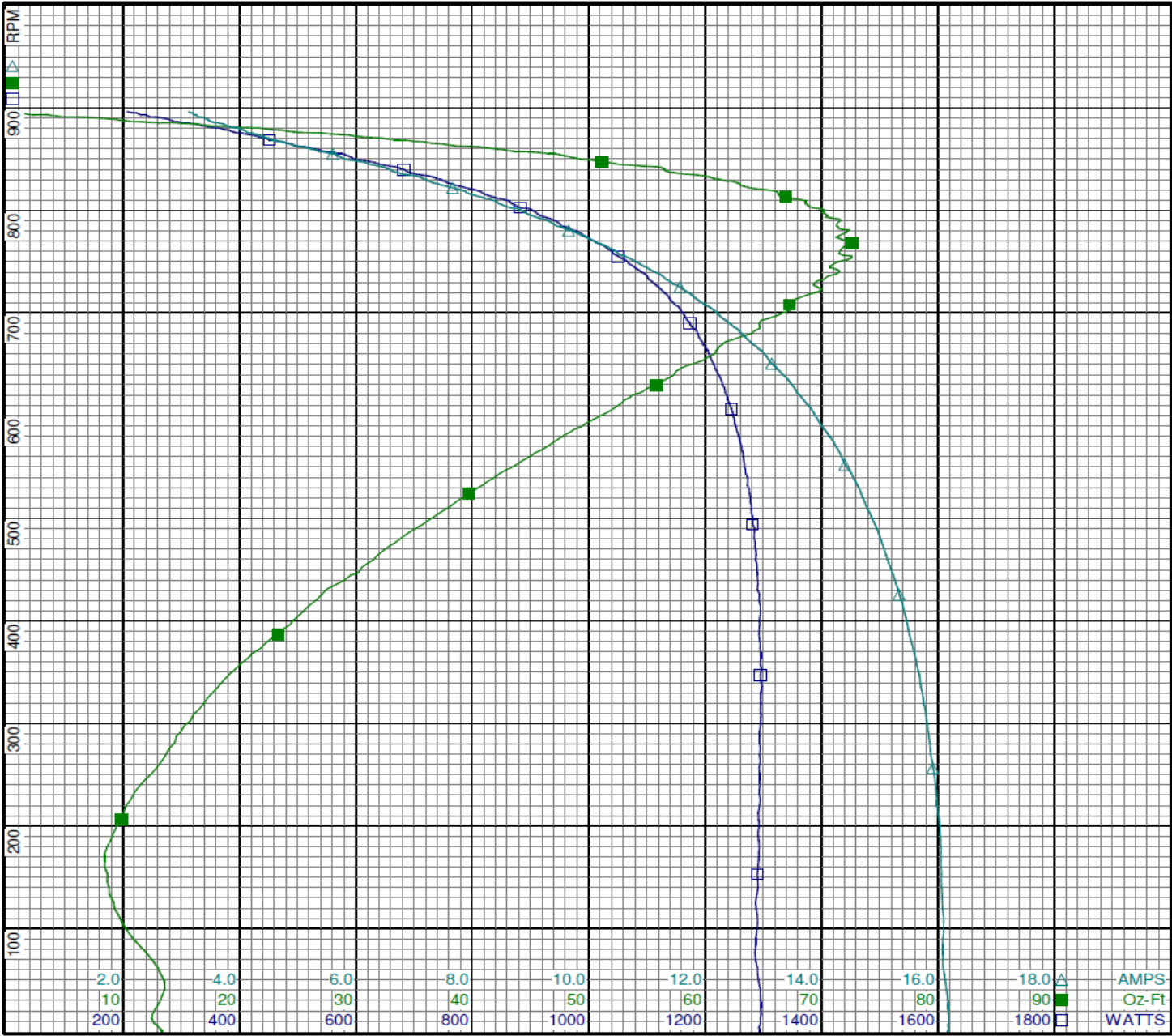
Performance Data



1YAZ3BH

REV.

-



Curve Descriptions:

Motor(1) Test 1 Start 115V 60 Hz 8P
30ufd Run

- SPEED vs WATTS
- SPEED vs TORQUE
- △ SPEED vs ILine

Motor Ratings:

K055CAL2202012E 1YAZ3BG

DRAWING NO. PAGE 2 of 8

1YAZ3BH

REV.

-

Dayton Electric Mfg. Co. Lake Forest, IL 60045 USA

Performance Data



1YAZ3BH

REV.
-

Dayton Manufacturing Company

Motor Description

Model: K055CAL2202012E 1YAZ3BG
Motor ID: motor 1
Poles: 8
Volts: 230/115
Frequency: 60
HP: 1/2
Speed: 825
Phase: 1
Protector: 7AM036A5

Test Conditions

Test Type: Run
Test Number: 2
Poles: 8
Volts: 115
Hz: 60
Rotation:
Special Cond:
Speed Conn:
TestBoard: Amtps Performance Fixture #3
Run Cap: 30ufd 370V
Start Cap: 0ufd
Environment:
Tested: 3/1/2010 9:39:45 AM
Tested By: Sharp, Gerald
Gear Ratio: 1:1
Bearing Friction: -0.92 Oz-Ft
Windage Torque: -2.67 Oz-Ft

Special Points	Vline(V)	Vaux(V)	Vcap(V)	Iline(A)	Imain(A)	Iaux(A)	Watts	RPM	Tq(Oz-ft)	HP	Eff(%)	PF(%)	Cap
	115.0	194.8	233.4	3.041	4.015	2.636	202.0	891	0.00	0.000	0.0	57.8	30.0
	115.0	191.2	227.7	3.368	3.817	2.565	277.9	885	10.53	0.111	29.8	71.8	29.9
	115.0	185.6	220.7	3.882	3.843	2.484	360.7	877	22.68	0.237	49.0	80.8	29.8
	115.0	178.8	212.6	4.513	4.108	2.402	447.9	867	33.51	0.346	57.6	86.3	30.0
	115.0	170.8	203.3	5.081	4.466	2.304	519.7	859	42.09	0.431	61.8	88.9	30.1
0.5 HP	115.0	163.5	195.2	5.717	5.024	2.215	588.3	850	49.43	0.500	63.4	89.5	30.1
	115.0	162.7	194.2	5.786	5.088	2.206	596.1	849	50.38	0.509	63.7	89.6	30.1
50.9 OZ-FT	115.0	162.1	193.8	5.840	5.137	2.199	601.9	847	50.90	0.513	63.6	89.6	30.1
	115.0	155.0	185.1	6.583	5.808	2.105	686.1	837	58.52	0.583	63.4	90.6	30.2
	115.0	147.8	177.8	7.283	6.526	2.019	757.3	825	63.42	0.623	61.4	90.4	30.1
825 RPM	115.0	147.3	177.2	7.333	6.577	2.013	763.0	825	63.83	0.627	61.3	90.5	30.1
0.625 HP	115.0	147.5	177.5	7.307	6.550	2.016	760.0	825	63.62	0.625	61.3	90.4	30.1
	115.0	140.2	170.2	7.992	7.291	1.935	826.6	814	67.90	0.658	59.4	89.9	30.2
	115.0	132.3	162.6	8.727	8.087	1.849	896.2	800	71.74	0.683	56.9	89.3	30.2
	115.0	124.5	155.4	9.441	8.884	1.769	958.9	785	73.61	0.688	53.5	88.3	30.2
BDT OZ-FT	115.0	120.6	152.1	9.789	9.283	1.730	988.7	778	74.06	0.686	51.7	87.8	30.2
	115.0	116.9	149.2	10.088	9.623	1.698	1012.6	769	73.76	0.676	49.8	87.3	30.2
	115.0	109.7	143.5	10.718	10.345	1.633	1063.5	752	72.88	0.653	45.8	86.3	30.2
	115.0	102.7	138.7	11.284	11.004	1.578	1104.9	735	71.70	0.627	42.4	85.1	30.2
	115.0	95.8	134.5	11.833	11.647	1.528	1141.8	716	69.80	0.595	38.9	83.9	30.2
	115.0	89.3	131.1	12.330	12.229	1.488	1172.6	696	67.04	0.556	35.3	82.7	30.1
	115.0	83.3	128.2	12.785	12.770	1.456	1199.2	674	63.75	0.512	31.8	81.6	30.1
	115.0	77.6	126.1	13.204	13.271	1.432	1221.8	651	59.91	0.464	28.4	80.5	30.1
	115.0	71.9	124.5	13.599	13.750	1.412	1238.7	625	56.03	0.417	25.1	79.2	30.1
	115.0	67.0	123.3	13.951	14.173	1.400	1254.9	598	51.48	0.367	21.8	78.2	30.1
	115.0	62.0	122.7	14.280	14.574	1.392	1267.0	569	47.00	0.318	18.7	77.2	30.1
	115.0	57.5	122.7	14.576	14.941	1.389	1275.4	537	42.10	0.269	15.8	76.1	30.0
	115.0	53.4	122.8	14.851	15.286	1.392	1284.1	505	37.59	0.226	13.1	75.2	30.1
	115.0	49.5	123.0	15.088	15.581	1.395	1289.8	471	32.90	0.184	10.7	74.3	30.1
	115.0	45.9	123.6	15.318	15.869	1.402	1294.4	433	28.24	0.146	8.4	73.5	30.1
	115.0	42.9	125.0	15.501	16.111	1.415	1295.9	392	24.07	0.112	6.5	72.7	30.0
	115.0	39.9	125.9	15.667	16.330	1.425	1298.6	351	19.70	0.082	4.7	72.1	30.0
	115.0	37.4	127.2	15.808	16.521	1.439	1298.0	305	15.99	0.058	3.3	71.4	30.0
	115.0	35.0	128.1	15.912	16.670	1.449	1296.6	259	12.45	0.038	2.2	70.9	30.0
	115.0	33.1	129.5	15.985	16.785	1.464	1293.6	207	10.15	0.025	1.4	70.4	30.0
	115.0	31.5	130.8	16.045	16.884	1.477	1291.7	154	8.64	0.016	0.9	70.0	30.0
	115.0	30.8	132.5	16.088	16.970	1.500	1291.6	99	8.99	0.011	0.6	69.8	30.0

DRAWING NO. PAGE 3 of 8
1YAZ3BH

REV.
-

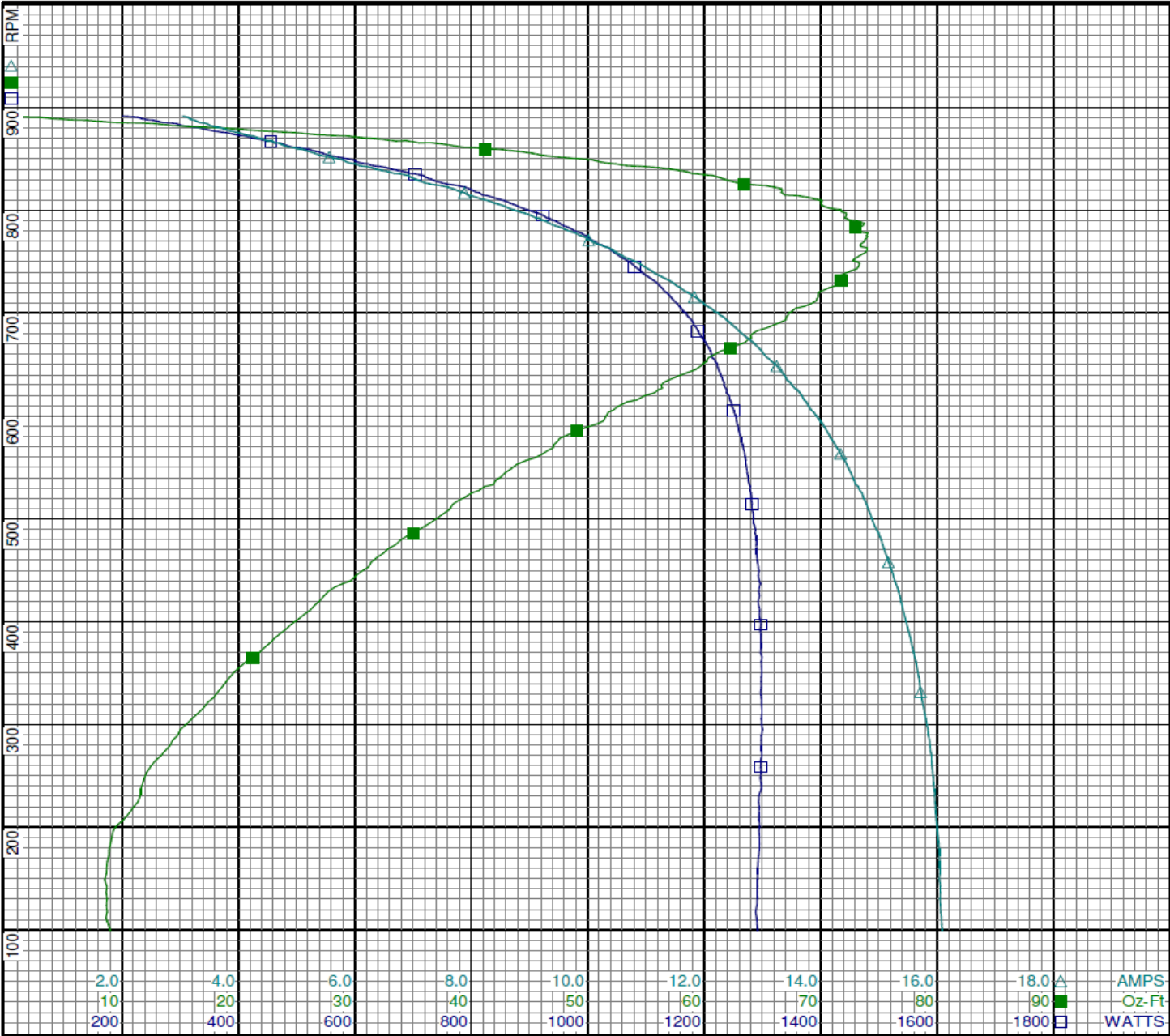
Dayton Electric Mfg. Co. Lake Forest, IL 60045 USA

Performance Data



1YAZ3BH

REV.
-



Curve Descriptions:
Motor(1) Test 2 Run 115V 60 Hz 8P
30ufd Run
□ SPEED vs WATTS
■ SPEED vs TORQUE
△ SPEED vs ILine

Motor Ratings:
K055CAL2202012E 1YAZ3BG

Performance Data



1YAZ3BH				REV. -									
Dayton Manufacturing Company													
Motor Description				Test Conditions									
Model:	K055CAL2202012E 1YAZ3BG			Test Type:	Start		Run Cap:	30ufd 370V					
Motor ID:	motor 1			Test Number:	4		Start Cap:	0ufd					
Poles:	8			Poles:	8		Environment:						
Volts:	230/115			Volts:	230		Tested:	3/1/2010 10:25:08 AM					
Frequency:	60			Hz:	60		Tested By:	Sharp, Gerald					
HP:	1/2			Rotation:			Gear Ratio:	1:1					
Speed:	825			Special Cond:			Bearing Friction:	-0.89 Oz-Ft					
Phase:	1			Speed Conn:			Windage Torque:	-2.87 Oz-Ft					
Protector:	7AM036A5			TestBoard:	Amps Performance		Fixture #3						
Special Points	Vline(V)	Vaux(V)	Vcap(V)	Iline(A)	Imain(A)	Iaux(A)	Watts	RPM	Tq(Oz-ft)	HP	Eff(%)	PF(%)	Cap
	230.0	95.8	141.0	8.122	9.139	1.591	1281.2	2	14.52	0.000	0.0	68.6	29.9
	230.0	96.6	140.4	8.120	9.128	1.584	1283.1	16	13.11	0.003	0.1	68.7	29.9
	230.0	100.4	137.4	8.068	9.036	1.549	1274.9	91	11.16	0.012	0.7	68.7	29.9
PUT OZ-FT	230.0	104.1	134.7	8.047	8.964	1.519	1277.3	160	9.27	0.018	1.0	69.0	29.9
	230.0	104.6	134.2	8.049	8.961	1.517	1279.5	166	9.37	0.019	1.1	69.1	30.0
	230.0	108.3	132.2	8.002	8.855	1.489	1281.3	239	11.93	0.034	2.0	69.6	29.9
	230.0	111.9	130.3	7.931	8.726	1.470	1283.4	305	16.24	0.059	3.4	70.4	29.9
	230.0	116.2	128.7	7.839	8.568	1.453	1285.5	362	21.11	0.091	5.3	71.3	30.0
	230.0	120.7	127.0	7.716	8.376	1.435	1283.1	416	26.76	0.132	7.7	72.3	30.0
	230.0	125.4	125.7	7.579	8.161	1.422	1278.6	465	32.64	0.181	10.5	73.4	30.0
	230.0	130.2	124.7	7.425	7.930	1.412	1274.1	509	38.41	0.233	13.6	74.6	30.0
	230.0	135.0	124.3	7.248	7.670	1.407	1263.6	550	44.15	0.289	17.1	75.8	30.0
	230.0	139.6	124.8	7.046	7.382	1.408	1246.5	588	49.65	0.348	20.8	76.9	29.9
	230.0	144.8	125.8	6.833	7.081	1.420	1230.2	621	54.83	0.406	24.6	78.3	29.9
	230.0	150.2	127.2	6.601	6.757	1.442	1212.0	651	59.44	0.461	28.3	79.8	30.1
	230.0	155.6	129.9	6.331	6.389	1.471	1180.7	680	63.56	0.515	32.5	81.1	30.0
	230.0	160.5	132.9	6.079	6.050	1.504	1150.8	704	67.12	0.563	36.5	82.3	30.0
	230.0	166.1	137.1	5.782	5.658	1.554	1113.5	728	70.63	0.612	41.0	83.7	30.1
	230.0	171.7	142.3	5.460	5.242	1.613	1068.6	747	71.93	0.640	44.7	85.1	30.1
	230.0	177.1	148.0	5.125	4.824	1.680	1017.3	767	72.12	0.658	48.3	86.3	30.1
	230.0	182.3	154.4	4.785	4.425	1.756	961.7	784	72.11	0.673	52.2	87.4	30.2
	230.0	187.1	160.8	4.458	4.030	1.830	906.6	799	70.00	0.666	54.8	88.4	30.2
	230.0	191.3	168.5	4.099	3.653	1.916	837.2	813	66.76	0.646	57.6	88.8	30.2
	230.0	195.4	175.9	3.743	3.294	1.997	768.4	825	62.15	0.610	59.2	89.3	30.1
	230.0	199.9	183.6	3.373	2.966	2.090	695.5	837	57.40	0.572	61.4	89.7	30.2
	230.0	203.3	191.3	3.039	2.743	2.178	623.0	847	50.30	0.507	60.7	89.1	30.2
	230.0	206.3	198.7	2.716	2.575	2.267	552.0	858	43.63	0.445	60.2	88.4	30.3
	230.0	210.9	209.4	2.329	2.481	2.380	463.6	868	33.25	0.344	55.3	86.6	30.2
	230.0	216.0	220.0	2.046	2.571	2.491	386.3	877	23.37	0.244	47.1	82.1	30.0
	230.0	220.9	228.0	1.782	2.749	2.575	301.7	886	11.53	0.122	30.1	73.6	30.0
	230.0	221.9	233.7	1.576	2.973	2.638	221.5	894	0.00	0.000	0.0	61.1	29.9
DRAWING NO. PAGE 5 of 8												REV.	-
1YAZ3BH													

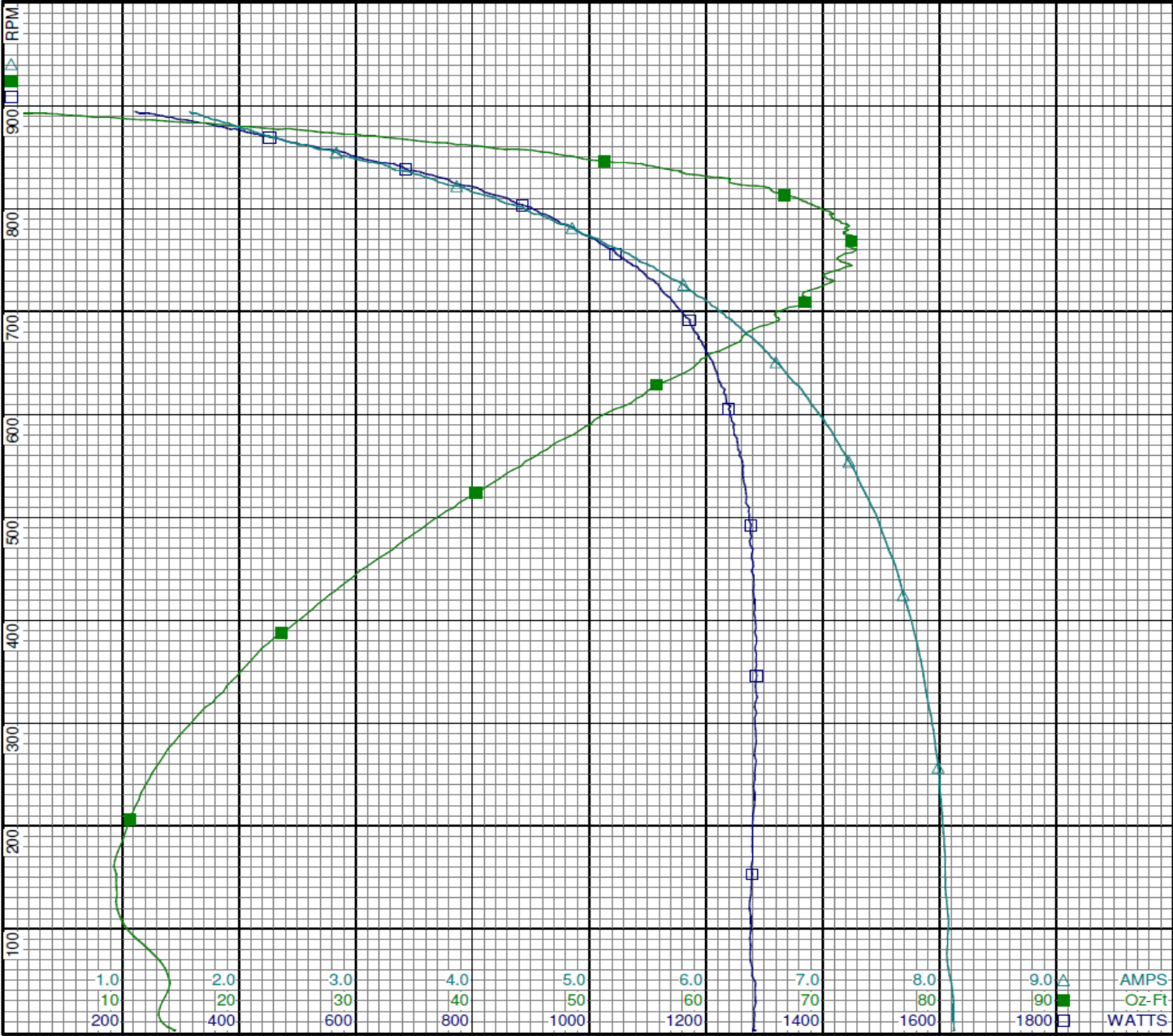
Dayton Electric Mfg. Co. Lake Forest, IL 60045 USA

Performance Data



1YAZ3BH

REV.
-



Curve Descriptions:
Motor(1) Test 4 Start 230V 60 Hz 8P
30ufd Run
□ SPEED vs WATTS
■ SPEED vs TORQUE
△ SPEED vs ILine

Motor Ratings:
K055CAL2202012E 1YAZ3BG

Performance Data



1YAZ3BH

REV.
-

Dayton Manufacturing Company

Motor Description

Model: K055CAL2202012E 1YAZ3BG
Motor ID: motor 1
Poles: 8
Volts: 230/115
Frequency: 60
HP: 1/2
Speed: 825
Phase: 1
Protector: 7AM036A5

Test Conditions

Test Type: Run
Test Number: 5
Poles: 8
Volts: 230
Hz: 60
Rotation:
Special Cond:
Speed Conn:
TestBoard: Amtps Performance Fixture #3
Run Cap: 30ufd 370V
Start Cap: 0ufd
Environment:
Tested: 3/1/2010 10:24:20 AM
Tested By: Sharp, Gerald
Gear Ratio: 1:1
Bearing Friction: -1.01 Oz-Ft
Windage Torque: -2.99 Oz-Ft

Special Points	Vline(V)	Vaux(V)	Vcap(V)	Iline(A)	Imain(A)	Iaux(A)	Watts	RPM	Tq(Oz-ft)	HP	Eff(%)	PF(%)	Cap
	230.0	221.6	232.9	1.528	2.945	2.627	213.7	892	0.00	0.000	0.0	60.8	29.9
	230.0	220.8	226.9	1.705	2.701	2.557	287.7	884	11.01	0.116	30.1	73.4	29.9
	230.0	219.4	219.2	1.997	2.488	2.471	379.6	875	23.54	0.245	48.2	82.6	29.9
	230.0	214.6	210.6	2.325	2.429	2.380	464.3	867	34.36	0.355	57.0	86.8	30.0
	230.0	210.3	202.1	2.590	2.475	2.290	527.5	857	42.13	0.430	60.8	88.6	30.0
0.5 HP	230.0	207.7	194.8	2.877	2.563	2.209	594.4	850	49.41	0.500	62.8	89.8	30.1
50.9 OZ-FT	230.0	206.8	193.1	2.950	2.609	2.192	610.0	847	50.90	0.514	62.8	89.9	30.1
	230.0	206.5	192.6	2.976	2.625	2.186	615.6	847	51.30	0.517	62.6	90.0	30.1
	230.0	202.6	184.8	3.327	2.877	2.100	690.7	836	57.74	0.575	62.1	90.3	30.1
	230.0	197.5	176.6	3.719	3.241	2.008	767.7	825	63.52	0.624	60.6	89.8	30.2
825 RPM	230.0	197.4	176.4	3.726	3.247	2.006	769.4	825	63.72	0.626	60.7	89.8	30.2
0.625 HP	230.0	197.4	176.5	3.723	3.245	2.007	768.6	825	63.63	0.625	60.7	89.8	30.2
	230.0	192.8	168.8	4.090	3.612	1.920	840.6	813	68.44	0.662	58.7	89.4	30.2
	230.0	188.1	161.4	4.447	4.000	1.836	907.2	798	71.75	0.682	56.1	88.7	30.2
	230.0	183.6	154.6	4.770	4.382	1.759	963.8	782	73.20	0.682	52.8	87.8	30.2
	230.0	178.7	148.3	5.111	4.793	1.689	1022.4	767	73.43	0.670	48.9	87.0	30.2
BDT OZ-FT	230.0	176.8	146.7	5.206	4.914	1.669	1034.4	763	74.42	0.676	48.7	86.4	30.2
	230.0	173.6	143.0	5.408	5.164	1.627	1066.0	751	73.48	0.657	46.0	85.7	30.2
	230.0	168.5	138.5	5.696	5.536	1.574	1107.5	733	72.51	0.633	42.6	84.5	30.1
	230.0	163.5	134.4	5.968	5.892	1.528	1142.5	714	70.25	0.597	39.0	83.2	30.1
	230.0	158.7	131.2	6.221	6.232	1.490	1173.2	693	67.57	0.558	35.5	82.0	30.1
	230.0	153.9	128.7	6.451	6.544	1.463	1198.0	671	64.14	0.513	31.9	80.7	30.1
	230.0	149.5	126.9	6.657	6.831	1.442	1220.5	647	60.18	0.464	28.3	79.7	30.1
	230.0	145.0	125.7	6.851	7.102	1.426	1236.4	622	56.01	0.415	25.0	78.5	30.1
	230.0	140.9	125.0	7.028	7.352	1.417	1250.7	595	51.68	0.366	21.8	77.4	30.1
	230.0	136.7	124.5	7.192	7.585	1.412	1262.0	566	47.22	0.318	18.8	76.3	30.1
	230.0	132.7	124.7	7.341	7.802	1.413	1270.4	534	42.47	0.270	15.9	75.2	30.1
	230.0	128.8	125.3	7.475	8.001	1.420	1278.0	499	37.65	0.224	13.1	74.3	30.1
	230.0	125.2	126.1	7.593	8.180	1.428	1282.7	466	33.11	0.184	10.7	73.4	30.1
	230.0	121.7	126.9	7.702	8.346	1.437	1285.6	429	28.40	0.145	8.4	72.6	30.0
	230.0	118.0	128.2	7.797	8.498	1.450	1285.9	387	23.91	0.110	6.4	71.7	30.0
	230.0	114.9	129.4	7.872	8.628	1.467	1288.9	346	19.78	0.081	4.7	71.2	30.1
	230.0	111.6	130.9	7.947	8.751	1.482	1288.7	300	15.76	0.056	3.3	70.5	30.0
	230.0	108.8	132.1	7.996	8.844	1.495	1285.9	253	12.59	0.038	2.2	69.9	30.0
	230.0	106.0	133.7	8.036	8.927	1.510	1284.4	201	10.23	0.024	1.4	69.5	30.0
	230.0	103.4	135.2	8.060	8.990	1.528	1281.0	148	8.26	0.015	0.8	69.1	30.0

DRAWING NO. PAGE 7 of 8
1YAZ3BH

REV.
-

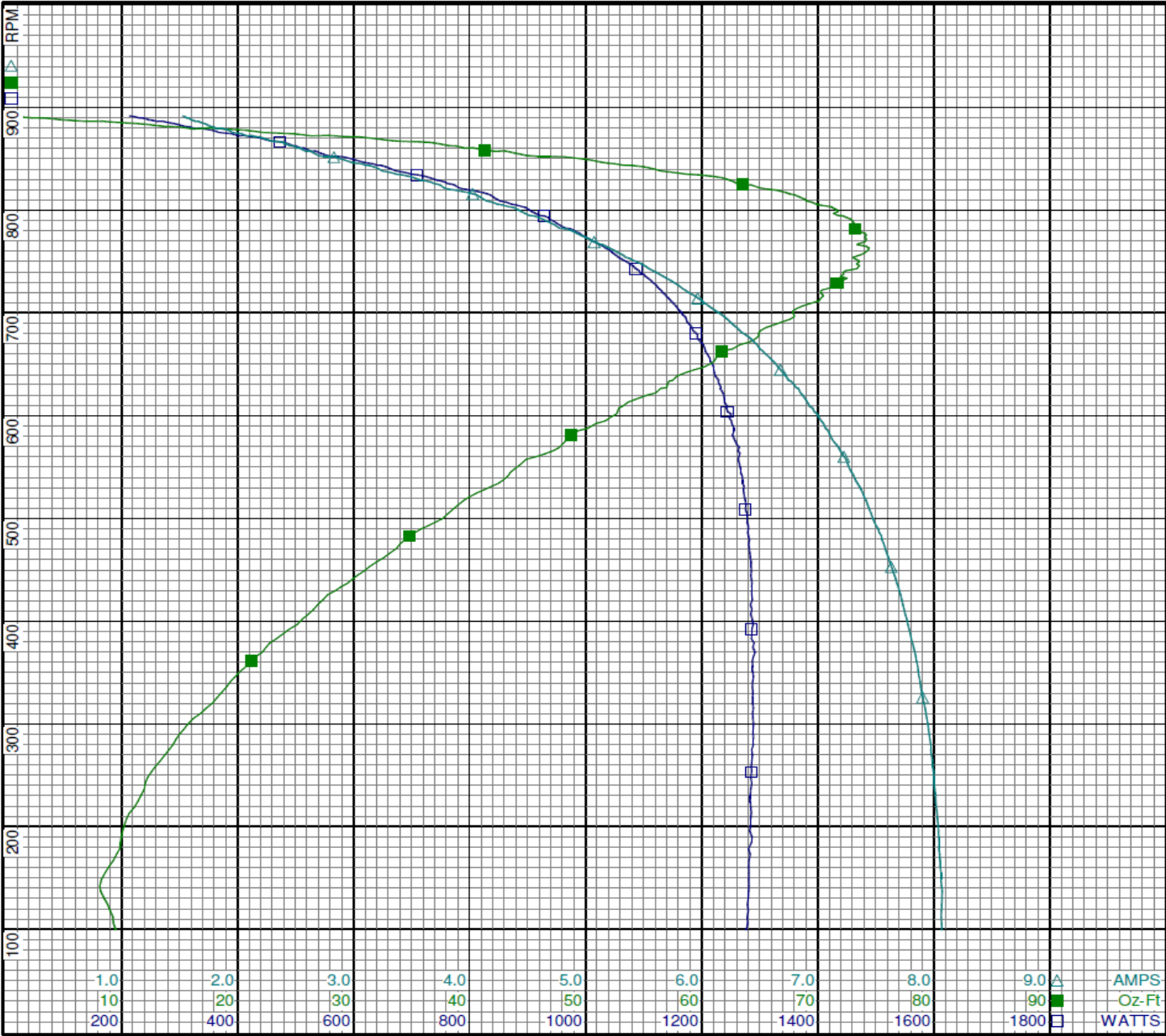
Dayton Electric Mfg. Co. Lake Forest, IL 60045 USA

Performance Data



1YAZ3BH

REV.
-



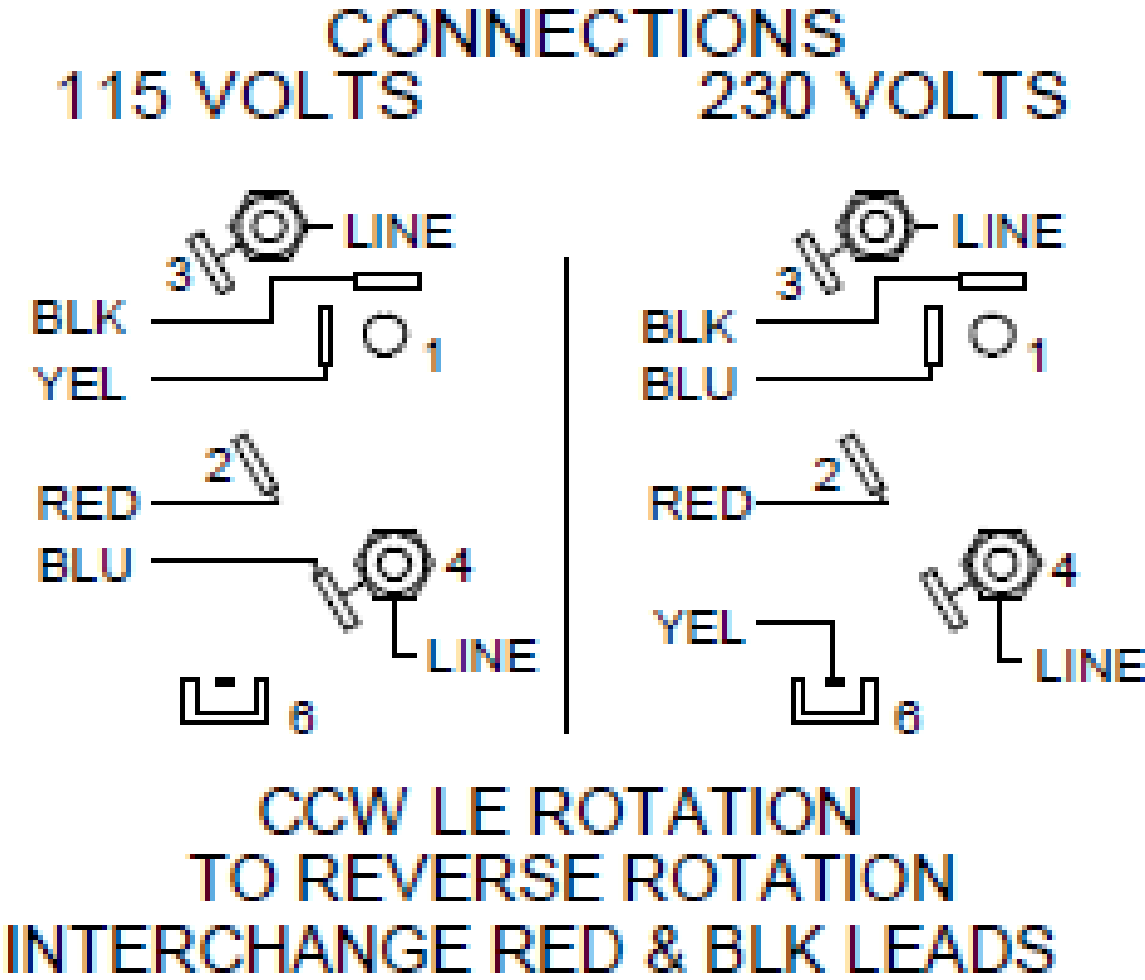
Curve Descriptions:
Motor(1) Test 5 Run 230V 60 Hz 8P
30ufd Run
□ SPEED vs WATTS
■ SPEED vs TORQUE
△ SPEED vs ILine

Motor Ratings:
K055CAL2202012E 1YAZ3BG

Wiring Diagram



1YAZ3BH	REV. -
---------	-----------

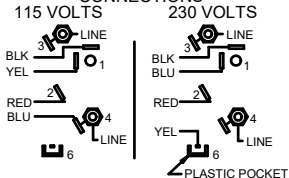


DRAWING NO.	PAGE 1 of 1	REV.
	1YAZ3BH	-

Dayton Electric Mfg. Co. Lake Forest, IL 60045 USA

Dayton[®]

AGRICULTURAL FAN MOTOR

HP: 1/2**VOLTS:** 115/230**AMPS:** 6.0/3.0**RPM:** 850**DUTY:** CONT**SF:** 1.25**KVA CODE:** B**ENCL:** TEAO**THERMALLY PROTECTED:** AUTO**MFG. NO.** ☐ ☐ **PROT. CODE** ☐ 7A010 **AVG. F.L.
EFF.****MTR REF:** K55HXCAL-2202**PH:** 1**HZ:** 60**FR:** 48Y**INS CL:** B**AMB:** 40 °C**SFA:** 6.8/3.4**[BAR CODE]****Part
No** 1YAZ3BH**Disconnect Power Before Making Any Electrical
Connections or Changes****CONNECTIONS**

**CCW LE ROTATION
TO REVERSE ROTATION
INTERCHANGE RED & BLK LEADS**

AL[®]
E37403**SP**[®]
258501**Mfd for Dayton Electric Mfg. Co., Lake Forest, IL 60045 USA**