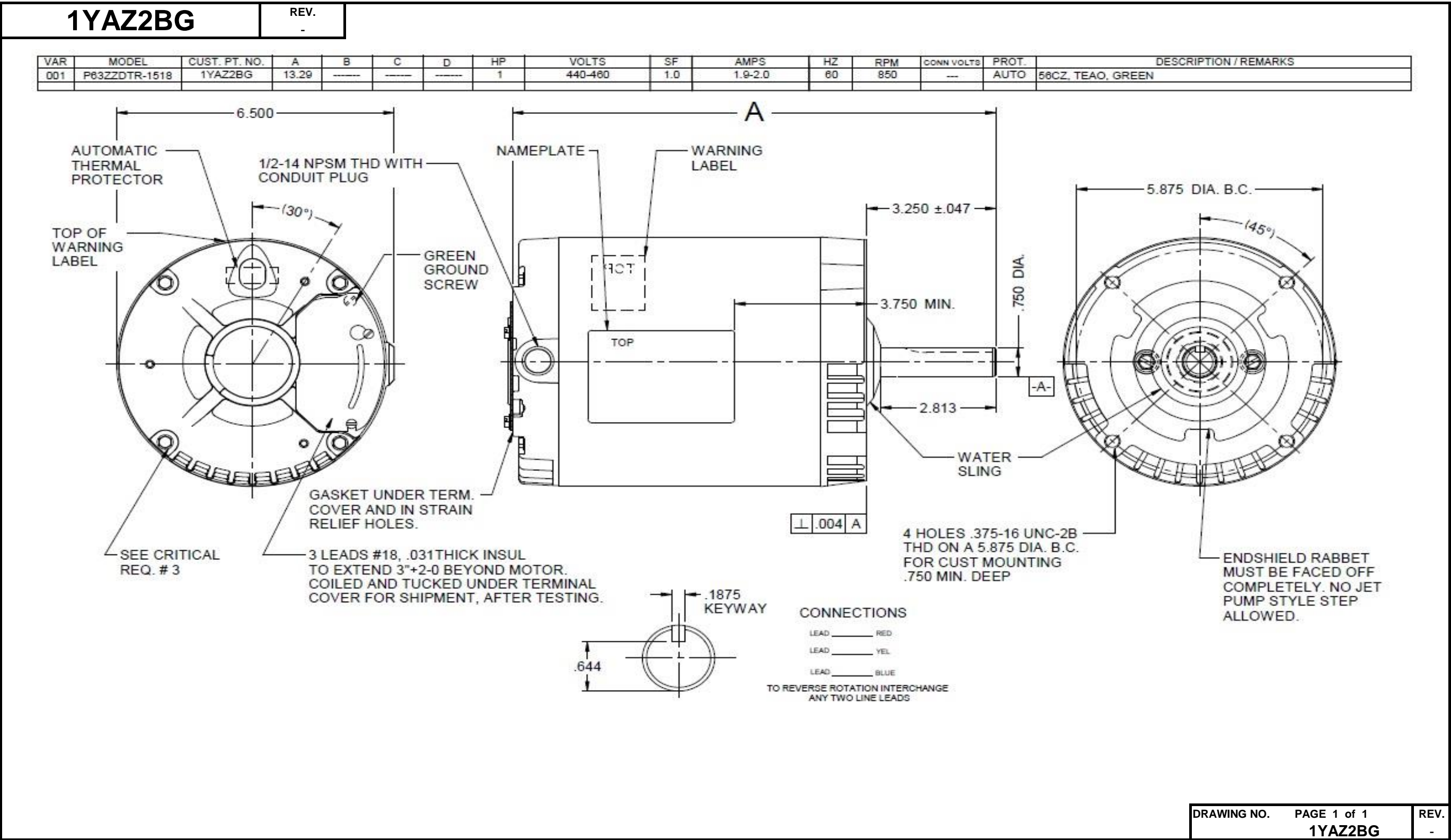


Dimensional Drawing



1YAZ2BG

REV.

-

MOTOR PERFORMANCE

HP:	1.0							
Poles:	8							
No. of Speeds:	1							
Volts:	440-460V	440	460					
HZ:	60	60	60					
Service Factor:	1							
Efficiency:	@ Rated Load							
Power Factor:	@ Rated Load							
Amps:	@ No Load							
	@ Rated Load	2.1	2.1					
	@ Service Factor	2.1	2.1					
	@ Locked Rotor	6.8	7.1					
RPM:	@ Rated Load	834	842					
Ambient (°C):	40							
Altitude (FASL):								
Torques:	Breakdown	203.6	225.7					
	Locked Rotor	146.3	163.4					
	Pull-Up	131.7	147.1					
	Rated Load	98.8	98.8					
	Service Factor	98.8	98.8					
Watts:	Rated Load	991	997					
KVA Code:	B	A	B					
Temperature Rise:	@ Rated Load	TEAO	TEAO					
	@ Service Factor	NA	NA					
Thermal Protector:	Trip Temp (°C)	NA	NA					
Winding Material:	Start (Auxiliary)	NA	NA					
	Run (Main)	Cu	Cu					
Capacitor(s):	Start (MFD / Volts)	NA						
	No. of Start Capacitors							
	Run (MFD / Volts)	NA						
	No. of Run Capacitors							

LOW SPEED PERFORMANCE DATA:

HP:								
Poles:								
Volts:								
HZ:								
Efficiency:	@ Rated Load							
Power Factor:	@ Rated Load							
Amps:	@ No Load							
	@ Rated Load							
	@ Service Factor							
	@ Locked Rotor							
Torques:	Bead Down							
	Locked Rotor							
	Pull-Up							
	Rated Load							
	Service Factor							
Watts:	@ Rated Load							
Temperature Rise:	@ Rated Load							
	@ Service Factor							

 DRAWING NO. PAGE 1 of 1
 1YAZ2BG

 REV.
 -

Performance Data



1YAZ2BG

REV.
-

Dayton Manufacturing Company

Motor Description

Model: 1YAZ2, P063DTR1518
Motor ID: 1
Poles: 8
Volts: 440-460
Frequency: 60
HP: 1.0
Speed: 850
Phase: 3
Protector: ~~Auto~~

Test Conditions

Test Type: Start
Test Number: 2
Poles: 8
Volts: 440
Hz: 60
Rotation:
Special Cond:
Speed Conn:
TestBoard: CMD InLine Three Phase #1 Fixture #1
Run Cap: 0
Start Cap: 0µfd
Environment: 24.4 Deg C 48 % RH 966 hPa
Tested: 8/23/2016 5:01:01 PM
Tested By: Navarro, Susana
Gear Ratio: 1:1
Bearing Friction: -0.36 Oz-Ft
Windage Torque: -1.21 Oz-Ft

Special Points	Vab (V)	Vbc (V)	Vca (V)	Ia (A)	Ib (A)	Ic (A)	Watts	RPM	Tq(Oz-ft)	HP	Eff (%)	PF (%)
	440.9	437.1	442.0	6.758	6.817	6.173	2943	20	146.33	0.035	0.9	58.7
	440.8	437.3	441.9	6.631	6.703	6.060	2937	95	155.40	0.175	4.4	59.6
	440.7	437.4	441.8	6.491	6.569	5.931	2930	170	158.05	0.321	8.2	60.7
	440.6	437.6	441.8	6.332	6.414	5.790	2916	241	165.26	0.475	12.1	61.9
	440.5	437.8	441.7	6.173	6.255	5.648	2899	304	171.98	0.623	16.0	63.1
	440.4	438.0	441.7	5.958	6.042	5.459	2866	371	179.72	0.793	20.6	64.6
	440.2	438.1	441.7	5.749	5.830	5.271	2824	427	185.68	0.943	24.9	66.0
	440.1	438.3	441.7	5.510	5.595	5.061	2768	480	193.20	1.103	29.7	67.4
	439.9	438.4	441.7	5.255	5.335	4.831	2690	528	194.89	1.224	34.0	68.7
	439.8	438.5	441.7	4.982	5.063	4.589	2601	572	197.84	1.348	38.7	70.0
	439.6	438.7	441.7	4.681	4.759	4.319	2487	614	198.14	1.448	43.4	71.2
	439.6	438.7	441.6	4.367	4.441	4.034	2353	652	195.12	1.514	48.0	72.1
	439.6	438.7	441.8	4.042	4.115	3.743	2202	686	189.43	1.546	52.4	72.8
	439.4	438.8	441.8	3.715	3.785	3.449	2037	716	181.57	1.548	56.7	73.2
	439.3	438.8	441.9	3.378	3.447	3.147	1853	744	170.08	1.507	60.7	73.1
	439.2	438.8	442.0	3.047	3.116	2.851	1658	770	156.37	1.433	64.5	72.4
	439.1	438.9	442.0	2.745	2.812	2.578	1466	792	141.13	1.330	67.7	70.9
	438.9	439.0	442.1	2.461	2.529	2.325	1273	811	124.26	1.200	70.3	68.5
	438.8	438.9	442.2	2.211	2.280	2.100	1090	828	107.26	1.057	72.4	65.1
	438.7	438.9	442.4	2.003	2.074	1.913	924	842	90.71	0.909	73.4	60.7
	438.9	438.9	442.2	1.821	1.894	1.746	758	855	73.11	0.744	73.2	54.6
	438.8	438.8	442.4	1.685	1.761	1.624	617	865	58.16	0.599	72.4	47.9
	438.8	438.5	442.7	1.584	1.664	1.533	497	874	44.96	0.468	70.2	40.9
	438.9	438.5	442.6	1.515	1.596	1.475	399	881	33.40	0.350	65.4	34.3
	438.8	438.4	442.8	1.468	1.548	1.438	310	887	23.36	0.247	59.4	27.4
	438.6	438.4	443.0	1.437	1.514	1.415	246	891	15.60	0.165	50.1	22.2
	438.6	438.4	443.0	1.422	1.494	1.406	194	895	9.85	0.105	40.3	17.7
	438.6	438.4	443.0	1.413	1.481	1.401	157	897	5.28	0.056	26.8	14.4
	438.6	438.4	443.0	1.410	1.475	1.399	131	899	1.89	0.020	11.5	12.0
	438.7	438.3	443.0	1.410	1.475	1.400	123	900	0.81	0.009	5.2	11.3

DRAWING NO. PAGE 1 of 8 REV.
1YAZ2BG -

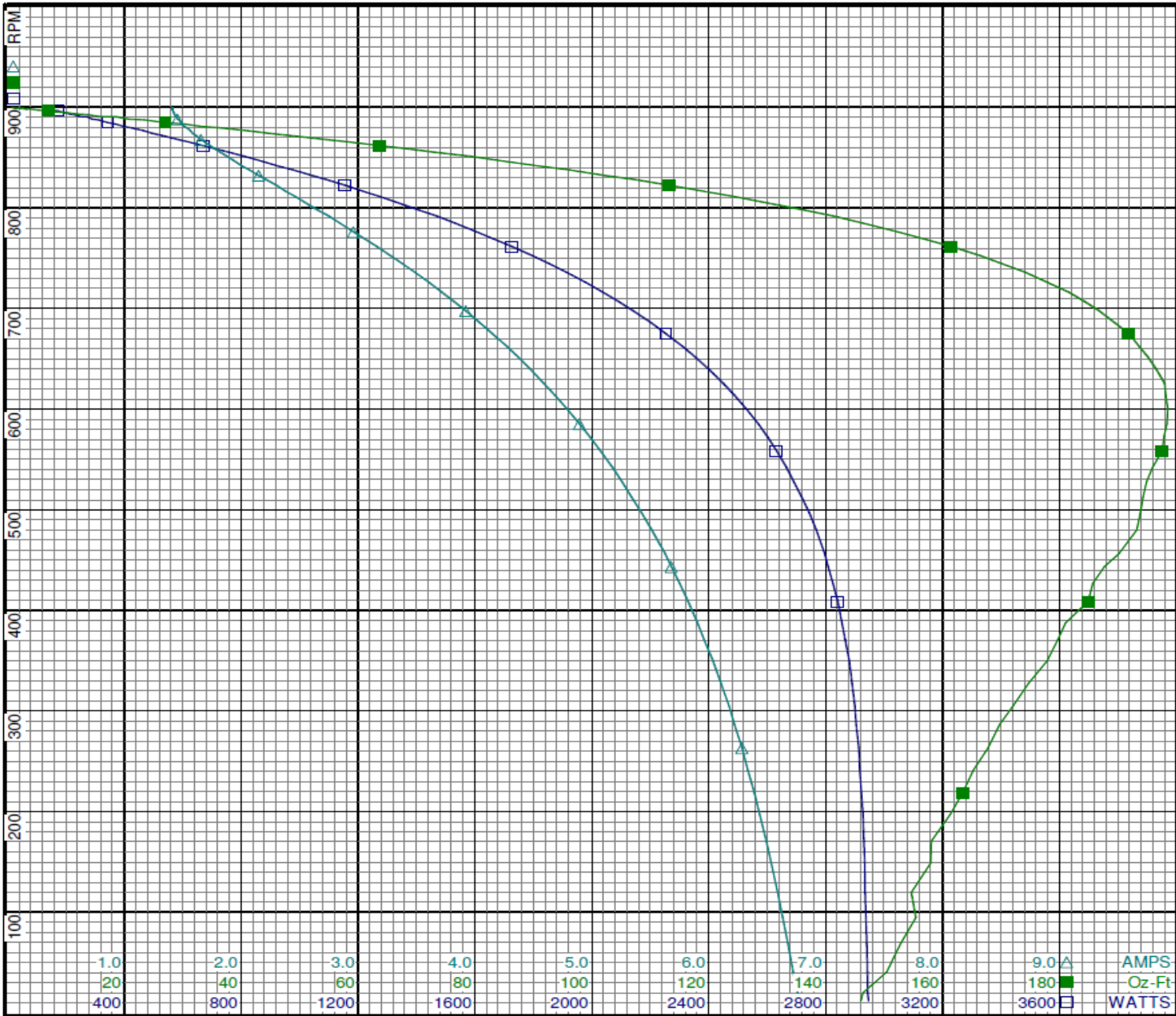
Dayton Electric Mfg. Co. Lake Forest, IL 60045 USA

Performance Data



1YAZ2BG

REV.
-



Curve Descriptions:
Motor(1) Test 2 Start 440V 60 Hz 8P

□ SPEED vs WATTS
■ SPEED vs TORQUE
△ SPEED vs Ia

Motor Ratings:
(1) 1YAZ2, P063DTR1518

Performance Data



1YAZ2BG

REV.

-

Dayton Manufacturing Company

Motor Description

Model: 1YAZ2, P063DTR1518
 Motor ID: 1
 Poles: 8
 Volts: 440-460
 Frequency: 60
 HP: 1.0
 Speed: 850
 Phase: 3
 Protector: Auto

Test Conditions

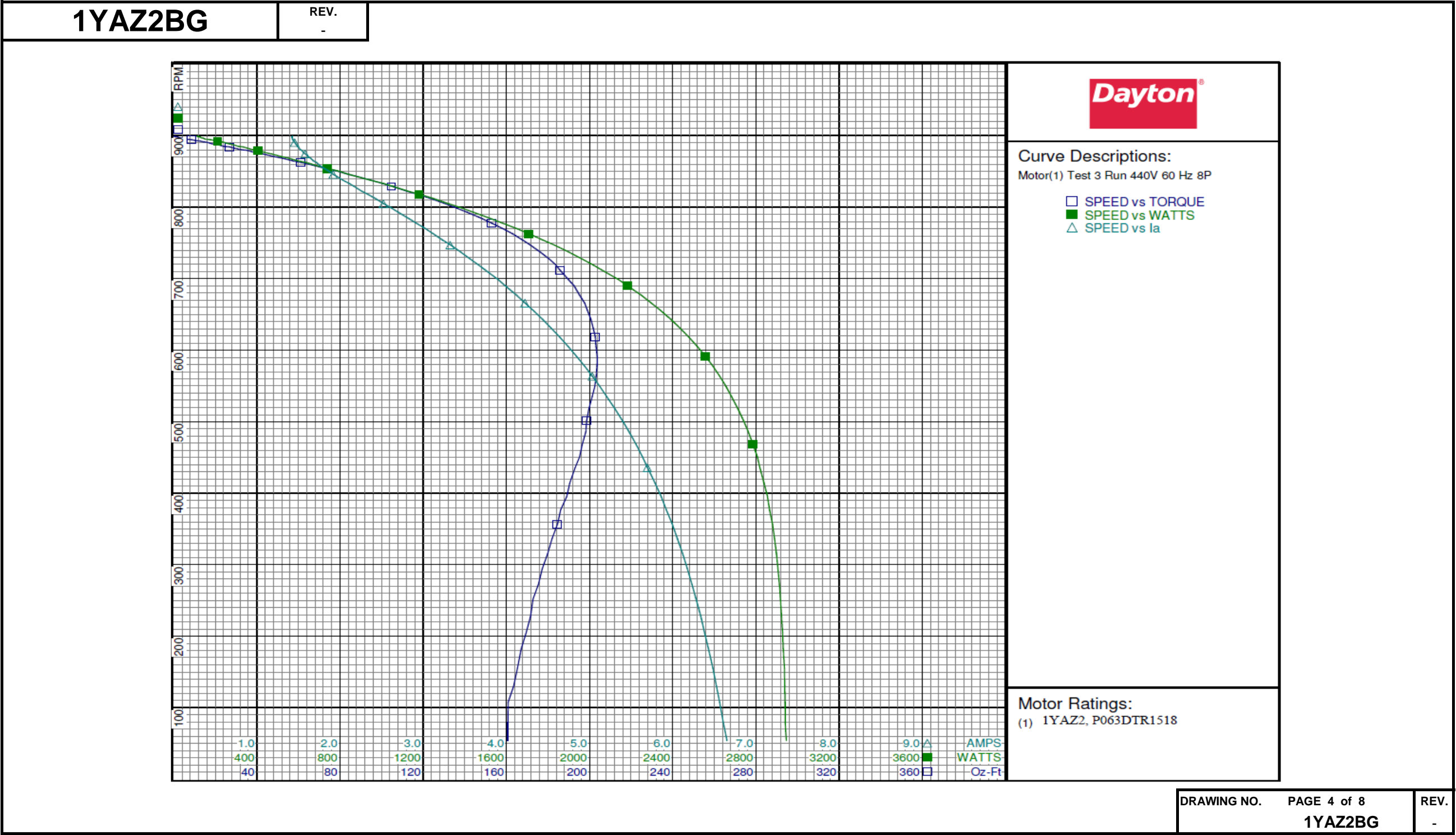
Test Type: Run
 Test Number: 3
 Poles: 8
 Volts: 440
 Hz: 60
 Rotation:
 Special Cond:
 Speed Conn:
 TestBoard: CMD InLine Three Phase #1 Fixture #1
 Run Cap: 0
 Start Cap: 0µfd
 Environment: 24.4 Deg C 48 % RH 966 hPa
 Tested: 8/23/2016 5:02:20 PM
 Tested By: Navarro, Susana
 Gear Ratio: 1:1
 Bearing Friction: -0.39 Oz-Ft
 Windage Torque: -1.21 Oz-Ft

Special Points	Vab (V)	Vbc (V)	Vca (V)	Ia (A)	Ib (A)	Ic (A)	Watts	RPM	Tq (Oz-ft)	HP	Eff (%)	PF (%)
	441.6	435.9	442.6	1.420	1.493	1.373	112	899	0.0	0.000	0.0	10.2
	441.6	435.9	442.5	1.421	1.493	1.373	120	898	0.8	0.009	5.5	11.0
	441.6	435.9	442.5	1.424	1.496	1.372	140	896	3.8	0.041	21.7	12.8
	441.5	436.0	442.5	1.437	1.514	1.374	194	893	10.1	0.108	41.5	17.6
	441.5	436.1	442.4	1.455	1.537	1.380	242	890	16.2	0.172	52.8	21.8
	441.5	436.2	442.3	1.485	1.572	1.398	311	885	24.0	0.252	60.6	27.4
	441.5	436.2	442.2	1.539	1.630	1.439	405	879	35.1	0.368	67.7	34.6
	441.3	436.2	442.5	1.614	1.710	1.504	518	870	48.4	0.501	72.1	42.3
	441.5	436.4	442.2	1.713	1.811	1.595	635	862	61.2	0.628	73.7	48.9
	441.5	436.4	442.1	1.860	1.962	1.730	787	851	78.2	0.792	75.1	55.8
850 RPM	441.5	436.4	442.2	1.867	1.969	1.737	794	850	78.9	0.799	75.1	56.1
	441.4	436.4	442.2	2.033	2.138	1.891	945	838	94.8	0.945	74.6	61.4
98.8 OZ-FT	441.4	436.4	442.2	2.088	2.194	1.942	991	834	98.8	0.981	73.9	62.7
1 HP	441.4	436.4	442.1	2.116	2.222	1.967	1014	832	100.9	1.000	73.6	63.3
	441.5	436.5	442.0	2.255	2.362	2.096	1124	822	111.8	1.095	72.6	65.9
113.6 OZ-FT	441.5	436.6	442.0	2.281	2.387	2.119	1143	821	113.6	1.110	72.4	66.3
	441.5	436.6	441.9	2.523	2.632	2.341	1321	805	130.5	1.250	70.6	69.4
	441.4	436.8	441.8	2.809	2.918	2.601	1514	785	147.3	1.376	67.8	71.5
	441.4	436.8	441.8	3.117	3.229	2.882	1707	763	162.8	1.478	64.6	72.8
	441.4	437.0	441.7	3.448	3.558	3.180	1899	737	176.1	1.546	60.7	73.4
	441.3	437.0	441.7	3.743	3.854	3.449	2058	712	185.6	1.574	57.1	73.3
	441.2	437.1	441.6	4.119	4.229	3.788	2247	677	195.1	1.573	52.2	72.9
	441.1	437.3	441.6	4.433	4.542	4.073	2390	643	200.5	1.535	47.9	72.1
	441.0	437.3	441.6	4.740	4.850	4.351	2517	605	203.1	1.463	43.4	71.1
BDT OZ-FT	441.0	437.5	441.6	4.839	4.948	4.441	2556	592	203.6	1.434	41.9	70.7
	440.9	437.4	441.6	5.032	5.141	4.616	2626	563	203.1	1.362	38.7	69.9
	440.8	437.6	441.6	5.304	5.408	4.862	2713	518	199.6	1.230	33.8	68.6
	440.8	437.6	441.6	5.559	5.658	5.092	2785	468	196.5	1.095	29.3	67.2
	440.7	437.8	441.6	5.787	5.880	5.299	2839	414	190.5	0.939	24.7	65.9
	440.6	437.9	441.6	5.993	6.079	5.485	2879	357	184.6	0.784	20.3	64.6
	440.5	438.0	441.5	6.174	6.254	5.649	2905	294	177.2	0.621	15.9	63.3
	440.4	438.1	441.5	6.337	6.406	5.796	2923	227	171.6	0.465	11.9	62.1
	440.4	438.1	441.5	6.482	6.545	5.933	2937	155	165.3	0.305	7.8	61.0
	440.3	438.2	441.5	6.606	6.659	6.048	2941	80	160.7	0.152	3.9	59.9

DRAWING NO. PAGE 3 of 8 REV.
 1YAZ2BG -

Dayton Electric Mfg. Co. Lake Forest, IL 60045 USA

Performance Data



Performance Data



1YAZ2BG

REV.
-

Dayton Manufacturing Company

Motor Description

Model: 1YAZ2, P063DTR1518
Motor ID: 1
Poles: 8
Volts: 440-460
Frequency: 60
HP: 1.0
Speed: 850
Phase: 3
Protector: Auto

Test Conditions

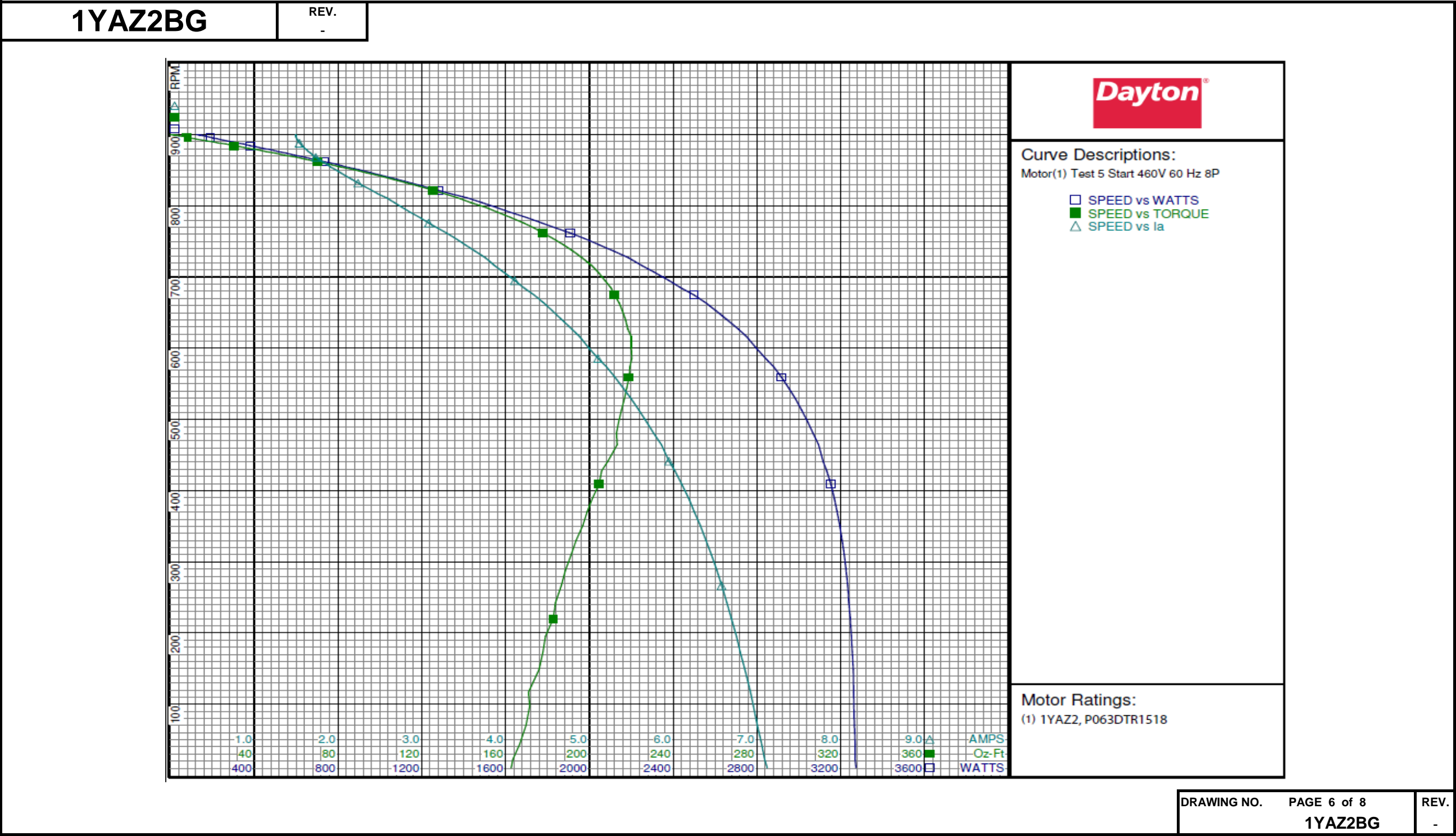
Test Type: Start
Test Number: 5
Poles: 8
Volts: 460
Hz: 60
Rotation:
Special Cond:
Speed Conn:
TestBoard: CMD InLine Three Phase #1 Fixture #1
Run Cap: 0
Start Cap: 0µfd
Environment: 24.4 Deg C 48 % RH 966 hPa
Tested: 8/23/2016 4:59:16 PM
Tested By: Navarro, Susana
Gear Ratio: 1:1
Bearing Friction: -0.32 Oz-Ft
Windage Torque: -1.19 Oz-Ft

Special Points	Vab (V)	Vbc (V)	Vca (V)	Ia (A)	Ib (A)	Ic (A)	Watts	RPM	Tq (Oz-ft)	HP	Eff (%)	PF (%)
	459.0	455.3	465.8	7.090	7.244	6.552	3268	22	163.4	0.043	1.0	58.9
	459.1	455.2	465.8	6.957	7.123	6.427	3262	97	171.4	0.198	4.5	59.9
	459.3	455.0	465.7	6.799	6.983	6.285	3255	173	177.8	0.367	8.4	61.1
	459.4	454.9	465.6	6.638	6.824	6.134	3238	243	183.8	0.532	12.2	62.2
	459.6	454.9	465.5	6.455	6.646	5.966	3216	310	191.2	0.705	16.4	63.5
	459.8	454.9	465.3	6.248	6.439	5.778	3182	371	199.0	0.878	20.6	64.9
	459.9	454.8	465.3	6.020	6.213	5.572	3132	428	205.8	1.048	25.0	66.2
	460.1	454.7	465.2	5.764	5.962	5.342	3067	481	212.8	1.218	29.6	67.7
	460.3	454.7	465.0	5.499	5.693	5.097	2984	529	216.6	1.363	34.1	69.0
	460.4	454.8	464.8	5.204	5.395	4.829	2879	574	219.3	1.498	38.8	70.3
	460.5	454.8	464.6	4.884	5.072	4.537	2751	616	220.0	1.614	43.8	71.5
	460.7	454.9	464.5	4.556	4.740	4.238	2604	653	215.7	1.676	48.0	72.4
	460.8	454.9	464.3	4.220	4.400	3.931	2438	684	210.3	1.714	52.4	73.1
	460.8	455.0	464.2	3.871	4.047	3.614	2252	716	201.2	1.714	56.8	73.5
	460.9	455.1	464.0	3.518	3.689	3.293	2047	745	187.6	1.664	60.6	73.4
	461.0	455.2	463.8	3.188	3.354	2.990	1841	768	173.6	1.589	64.4	72.7
	461.1	455.2	463.8	2.854	3.016	2.683	1617	791	155.8	1.468	67.7	71.2
	461.1	455.3	463.6	2.575	2.731	2.423	1413	811	136.9	1.322	69.8	68.9
	461.1	455.4	463.5	2.307	2.457	2.175	1204	827	118.4	1.167	72.3	65.3
	461.2	455.4	463.4	2.092	2.237	1.973	1018	842	100.1	1.003	73.5	60.8
	461.3	455.5	463.2	1.909	2.045	1.797	837	854	81.1	0.825	73.5	54.8
	461.5	455.4	463.1	1.770	1.901	1.664	684	865	64.5	0.665	72.5	48.3
	461.5	455.4	463.1	1.669	1.792	1.569	548	874	49.5	0.515	70.2	41.0
	461.5	455.4	463.1	1.602	1.718	1.509	444	880	37.6	0.394	66.2	34.6
	461.5	455.5	463.0	1.552	1.660	1.468	347	887	26.3	0.278	59.8	27.9
	461.4	455.5	463.0	1.522	1.620	1.448	273	891	17.6	0.187	51.1	22.4
	461.6	455.6	462.9	1.506	1.595	1.440	220	894	11.2	0.119	40.5	18.2
	461.5	455.7	462.9	1.496	1.578	1.439	170	897	5.6	0.060	26.1	14.2
	461.5	455.7	462.8	1.493	1.574	1.440	145	899	2.3	0.024	12.6	12.1
	461.4	455.8	462.8	1.493	1.571	1.441	124	900	0.0	0.000	0.2	10.3

DRAWING NO. PAGE 5 of 8 REV.
1YAZ2BG -

Dayton Electric Mfg. Co. Lake Forest, IL 60045 USA

Performance Data



Performance Data



1YAZ2BG

REV.
-

Dayton Manufacturing Company

Motor Description

Model: 1YAZ2, P063DTR1518
Motor ID: 1
Poles: 8
Volts: 440-460
Frequency: 60
HP: 1.0
Speed: 850
Phase: 3
Protector: Auto

Test Conditions

Test Type: Run
Test Number: 6
Poles: 8
Volts: 460
Hz: 60
Rotation:
Special Cond:
Speed Conn:
TestBoard: CMD InLine Three Phase #1 Fixture #1
Run Cap: 0
Start Cap: 0µfd
Environment: 24.4 Deg C 48 % RH 966 hPa
Tested: 8/23/2016 4:56:16 PM
Tested By: Navarro, Susana
Gear Ratio: 1:1
Bearing Friction: -0.43 Oz-Ft
Windage Torque: -1.63 Oz-Ft

Special Points	Vab (V)	Vbc (V)	Vca (V)	Ia (A)	Ib (A)	Ic (A)	Watts	RPM	Tq (Oz-ft)	HP	Eff (%)	PF (%)
	459.9	458.4	461.7	1.499	1.552	1.459	123	899	0.0	0.000	0.0	10.3
	459.7	458.5	461.8	1.498	1.552	1.461	135	898	1.5	0.016	8.7	11.3
	459.2	458.6	462.2	1.500	1.557	1.465	175	895	6.4	0.068	29.1	14.5
	459.1	458.6	462.3	1.512	1.576	1.474	233	892	13.7	0.146	46.7	19.3
	458.7	458.6	462.7	1.527	1.600	1.490	288	888	20.0	0.211	54.7	23.5
	458.6	458.5	462.9	1.558	1.639	1.517	367	884	29.5	0.310	63.0	29.3
	458.3	458.4	463.3	1.621	1.710	1.578	486	876	43.1	0.449	69.0	37.3
	458.2	458.3	463.6	1.703	1.801	1.660	610	868	57.3	0.593	72.5	44.5
	457.9	458.1	464.0	1.820	1.925	1.776	756	859	74.1	0.758	74.7	51.6
850 RPM	458.1	457.9	464.0	1.947	2.058	1.894	889	850	87.1	0.881	74.0	56.7
	458.0	457.7	464.4	1.988	2.102	1.934	932	846	92.1	0.927	74.2	58.3
98.8 OZ-FT	458.0	457.8	464.3	2.060	2.175	2.003	997	842	98.8	0.990	74.1	60.2
1 HP	458.0	457.7	464.3	2.070	2.185	2.012	1007	841	99.9	1.000	74.1	60.5
	457.9	457.5	464.6	2.190	2.311	2.127	1116	833	111.0	1.101	73.6	63.4
113.6 OZ-FT	457.9	457.5	464.6	2.220	2.342	2.156	1142	831	113.6	1.124	73.4	64.0
	457.9	457.3	464.8	2.443	2.573	2.367	1325	816	131.6	1.279	72.0	67.6
	457.9	457.3	464.9	2.722	2.860	2.627	1533	798	150.0	1.426	69.4	70.3
	458.0	456.8	465.2	3.040	3.191	2.921	1756	777	169.7	1.570	66.7	72.3
	458.0	456.6	465.4	3.375	3.537	3.229	1974	753	186.4	1.671	63.2	73.3
	458.4	456.2	465.4	3.724	3.899	3.542	2183	727	200.7	1.737	59.4	73.6
	458.5	455.9	465.5	4.068	4.254	3.855	2373	698	211.2	1.756	55.2	73.4
	458.8	455.6	465.6	4.395	4.594	4.148	2541	667	219.0	1.740	51.1	72.8
	458.9	455.5	465.6	4.759	4.961	4.471	2708	629	223.8	1.677	46.2	71.9
	459.2	455.2	465.6	5.079	5.291	4.754	2843	590	225.7	1.586	41.6	70.8
BDT OZ-FT	459.3	455.1	465.6	5.181	5.394	4.842	2883	577	225.7	1.550	40.1	70.4
	459.5	454.9	465.6	5.380	5.595	5.017	2955	547	224.5	1.463	36.9	69.6
	459.7	454.8	465.5	5.585	5.788	5.191	3012	519	216.0	1.334	33.0	68.5
	460.0	454.7	465.2	5.935	6.142	5.498	3119	451	216.0	1.159	27.7	66.8
	460.2	454.7	465.2	6.168	6.371	5.700	3175	394	209.2	0.981	23.0	65.5
	460.5	454.6	465.0	6.370	6.566	5.872	3212	334	201.2	0.801	18.6	64.3
	460.7	454.5	464.8	6.563	6.749	6.035	3239	270	193.9	0.624	14.4	63.0
	460.8	454.5	464.6	6.730	6.903	6.180	3257	202	186.9	0.449	10.3	61.9
	460.9	454.7	464.4	6.883	7.037	6.315	3271	130	180.1	0.279	6.4	60.9
	461.1	454.8	464.1	7.026	7.156	6.433	3280	51	175.7	0.107	2.4	59.9

DRAWING NO. PAGE 7 of 8 REV.
1YAZ2BG -

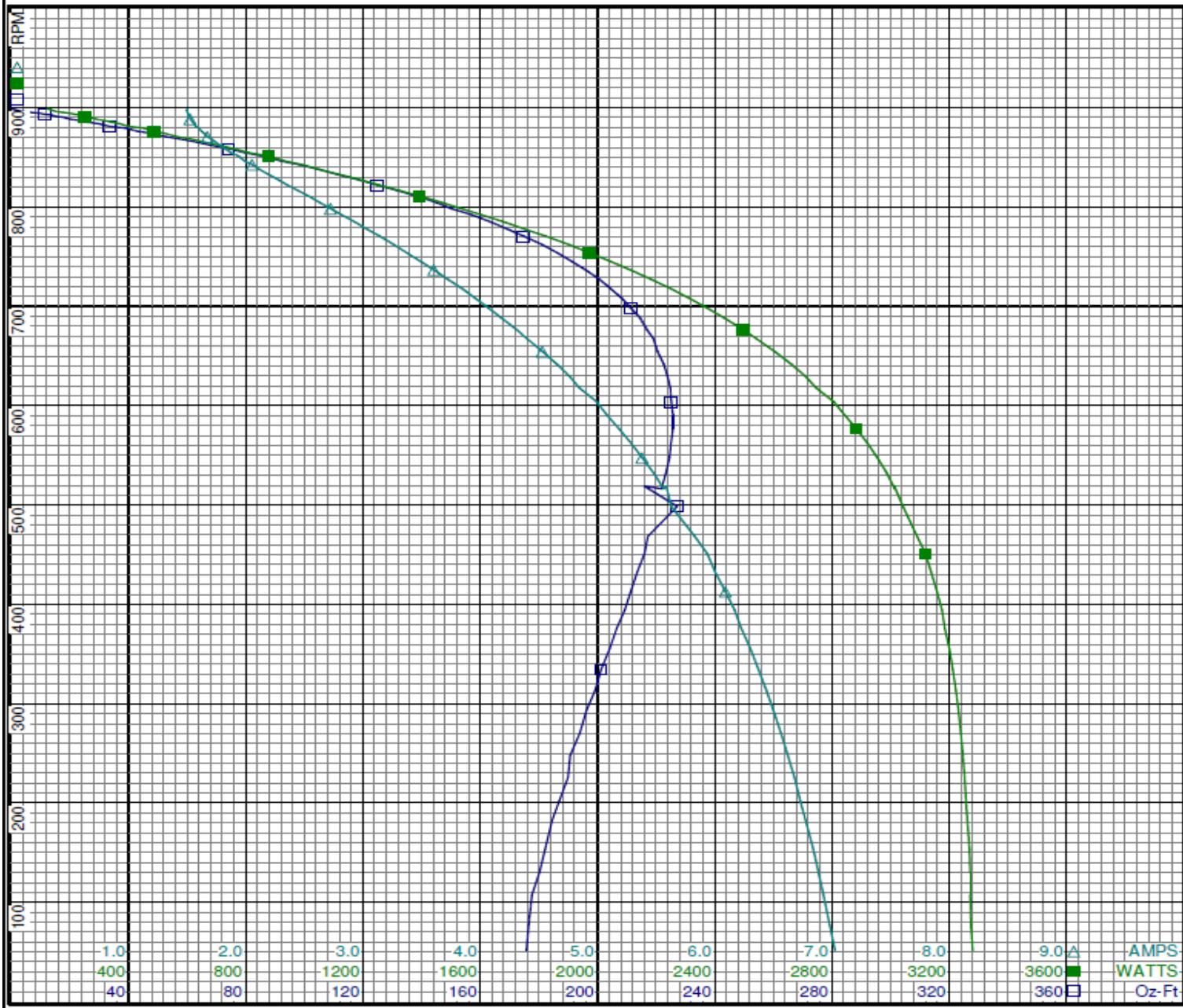
Dayton Electric Mfg. Co. Lake Forest, IL 60045 USA

Performance Data



1YAZ2BG

REV.
-



Curve Descriptions:
Motor(1) Test 6 Run 460V 60 Hz 8P
□ SPEED vs TORQUE
■ SPEED vs WATTS
△ SPEED vs Ia

Motor Ratings:
(1) 1YAZ2, P063DTR1518



1YAZ2BG	REV. -
<div>CONNECTIONS</div> <div>LEAD _____ RED</div> <div>LEAD _____ YEL</div> <div>LEAD _____ BLUE</div> <div>TO REVERSE ROTATION INTERCHANGE ANY TWO LINE LEADS</div>	
<div>DRAWING NO. 1YAZ2BG</div> <div>PAGE 1 of 1</div> <div>REV. -</div>	

Dayton®**AGRICULTURAL FAN
MOTOR****HP:** 1**VOLTS:** 440-460**AMPS:** 1.9-2.0**RPM:** 850**DUTY:** CONT**SF:** 1**KVA CODE:** B**ENCL:** TEAO**THERMALLY PROTECTED:** AUTO**MFG. NO.** ☐ ☐ **PROT. CODE** ☐ 97012 **AVG. F.L.
EFF.** 74.0**MTR REF:** P63ZZDTR-1518**PH:** 3**HZ:** 60**FR:** 56CZ**INS CL:** B**AMB:** 40°C**SFA:**Part
No 1YAZ2BG**Disconnect Power Before Making
Any Electrical Connections or Changes****CONNECTIONS**

LEAD _____ RED

LEAD _____ YEL

LEAD _____ BLUE

**TO REVERSE ROTATION INTERCHANGE
ANY TWO LINE LEADS**

E47479



258501

Mfd for Dayton Electric Mfg. Co., Lake Forest, IL 60045 USA**Made in Mexico**