

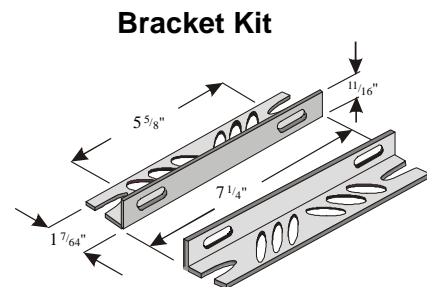
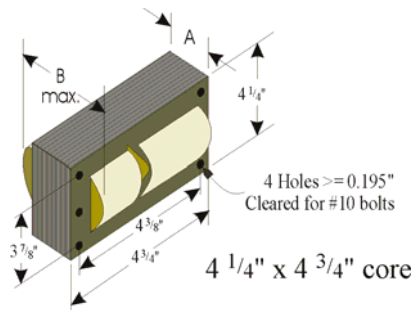


# HID BALLAST KIT



Model No:	1XUE1	Capacitance	15 $\mu$ F $\pm$ 3%	
Input Voltage	120/208/240/277V	Minimum Volts	400V	
Frequency	60Hz	Dry	Diameter	1.77"
Circuit Type	CWA		Height	4.61"
Input Power	295W			
Power Factor	$\geq$ 90%			
Operating Current	2.7/1.6/1.3/1.2 A			
Open Circuit Voltage	310 (280-340V)	Case Max. Temperature	105°C Dry	
Short Circuit Current (Sec.)	2.25 - 2.75 A	Ignitor	None	
Recommended Fuse	8/5/5/3/2A			
Insulation System	Class H, 180°C	Min. Starting Temp.	-20°F / -30°C	
A	1.52"	Weight	9.10 lbs.	
B	3.20"	Leads	12"-Cross Link Polyolefin	
UL 1029 Bench Top Rise Code	A/A/A/A	Regulation	$\pm$ 5% Input Volts ~ $\pm$ 5% Nom. Lamp Watts	
Ballast Type	Metal Halide / Mercury	ANSI Code	M-58 / H-37	
Watts	250W	Circuit Type	CWA	

## Dimensions





# HID BALLAST KIT

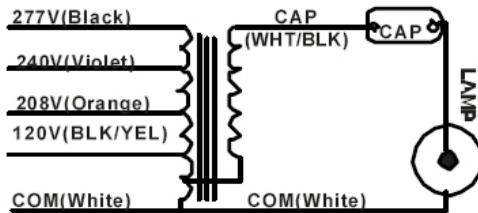
**LumaPro**™ **1XUE1**  
**4MH/MV250SC**



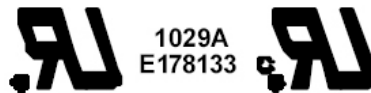
1 1XUE1

Mfg. for Grainger International Inc.  
Lake Forest, IL 60045  
Made in China

**Metal Halide-Mercury Vapor 250W**  
**Quad Tap 60Hz. 120V/208V/240V/277V**  
**Current Ratings: 2.7A/1.6A/1.3A/1.2A**  
For: 1-250Watt M-58MHLamp  
or H-37MVLamp  
O.C.V.-310V HIGH POWER FACTOR  
CAP: 15mfd 400V  
RDIS: max 1.50 megohms  
CLASSH, 180°C INSULATION  
SYSTEM-1029A  
Constant Wattage Autotransformer  
Install in Accordance with National  
Electrical Codes



Ground Ballast Core and Metallic Capacitor Case



### FIXTURE TEST DATA: INPUT CURRENT

<u>VOLTAGE</u>	<u>OPEN CIRCUIT</u>	<u>SHORT CIRCUIT</u>
120V	0.8-2.3A	1.1-3.2A
208V	0.5-1.4A	0.7-2.0A
240V	0.4-1.2A	0.6-1.7A
277V	0.3-1.0A	0.5-1.4A

**OCV:** 270-340V

**SHORT CKT SEC.:** 2.1-3.5A