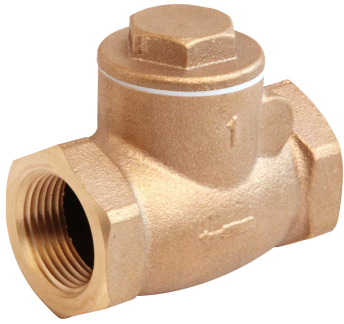


Bronze

Swing Check Valve



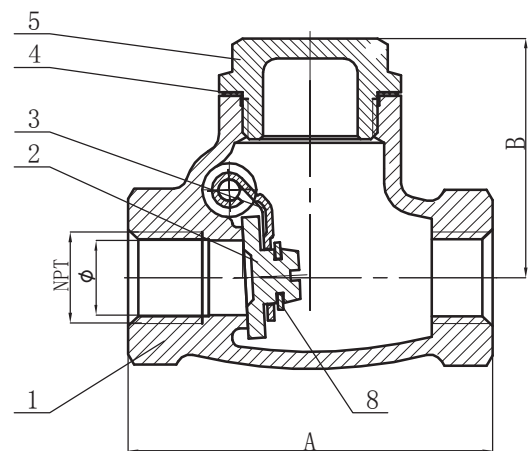
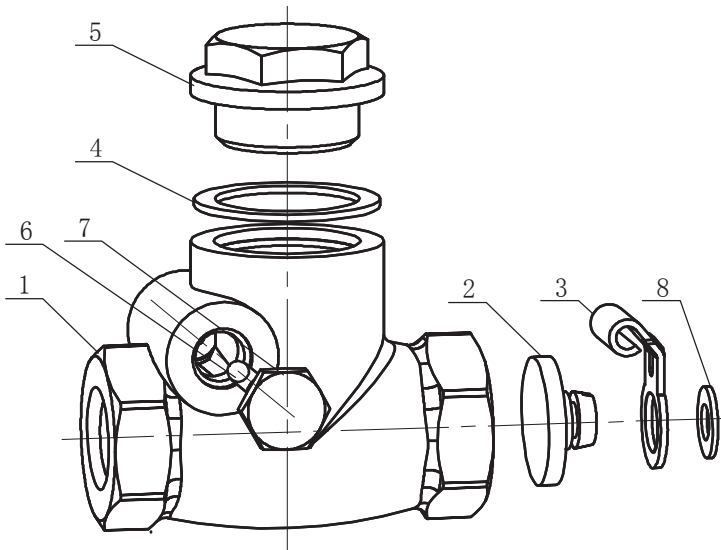
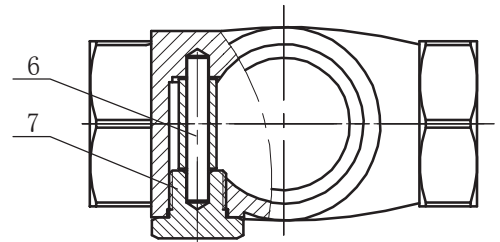
Features

- Bronze Body
- Threaded Ends
- Meet MSS-SP-80 Standards
- Max. Pressure: 125 PSI Steam ; 200 PSI CWP
- Cracking Pressure .75 To 1 PSI
- Temp. Range: -20° To 406° F

1/4"-2"

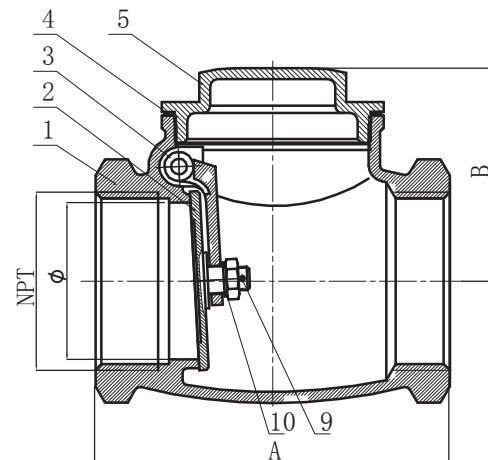
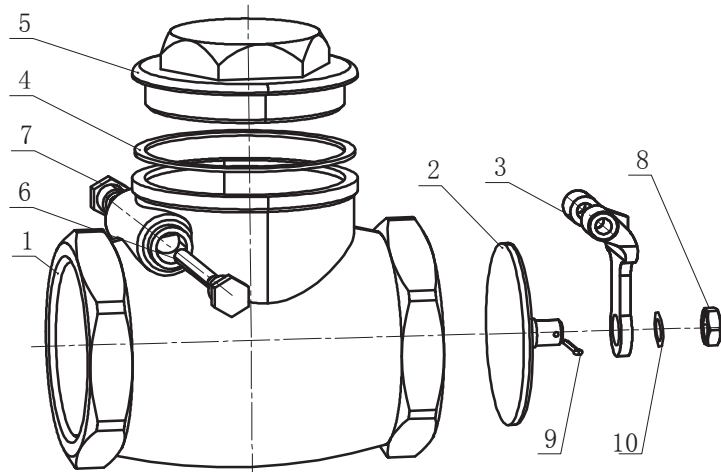
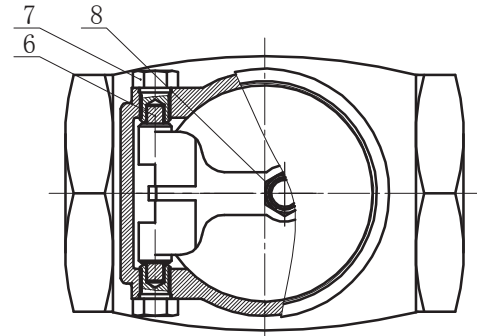
Material Specifications

No.	Part	Material
1	Body	Bronze
2	Disc	1/4"-1 1/2" Brass / 2" Bronze
3	Lever	Stainless Steel
4	Sealing Gasket	PTFE
5	Cap	1/4"-1 "Brass / 1 1/4" -2" Bronze
6	Pin	Stainless Steel
7	Bolt	Brass
8	Rand	Nickel Plated Steel



2 1/2"-3"

Material Specifications		
No.	Part	Material
1	Body	Bronze
2	Disc	Bronze
3	Lever	Bronze
4	Sealing Gasket	PTFE
5	Cap	Bronze
6	Pin	Stainless Steel
7	Bolt	Brass
8	Nut	Stainless Steel
9	Cotter	Stainless Steel
10	Wash	Stainless Steel



Description	Dimensions are in inches					
	Part No.	Size	A	B	Ø	Weight (lbs)
Bronze Swing Check Valve, Threaded Ends	10F288	1/4	2.126	1.358	0.433	0.520
	10F289	3/8	2.126	1.358	0.433	0.478
	10F290	1/2	2.283	1.358	0.504	0.548
	10F291	3/4	2.520	1.634	0.748	0.846
	10F292	1	3.150	1.929	1	1.306
	10F293	1 1/4	3.386	2.059	1.260	1.806
	10F294	1 1/2	3.819	2.291	1.496	2.652
	10F295	2	4.520	2.689	1.969	4.315
	10F296	2 1/2	5.689	3.425	2.520	7.621
	10F297	3	6.457	3.937	2.913	11.361

Working Pressures		
Working Pressure Non-Shock (psi)		Test Pressure (psi)
Cold Water, Oil, Gas		Shell (Air) Seat (Air)
200 WOG		80 80